

# KENDRIYA VIDYALAYA GAURIBIDANUR

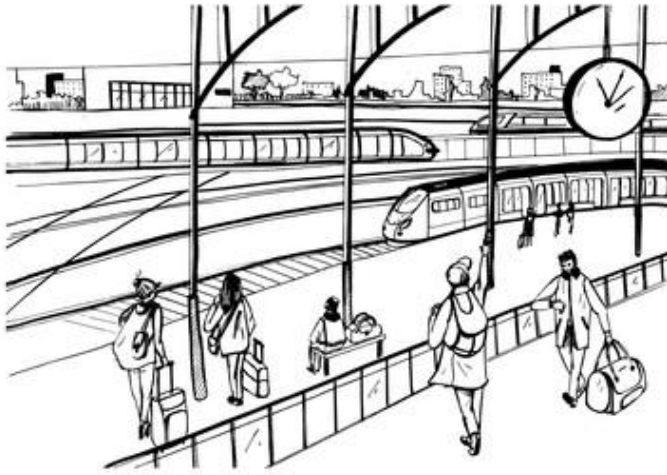
## Class -4

### SUMMER VACATION HOMEWORK

#### HINDI

इस चित्र के बारे में 5 वाक्य लिखो:

रेलवे स्टेशन	यात्री	सामान	रेलागाडी
पटरी	सूचना	पेल्टफर्म	समय



shutterstock.com • 1318125407

2) अपने मित्र को पत्र लिखो जिसमें आप बाज़ार में क्या क्या देखा और किन चीज़ों को कैसे खरीदा।

3) नियम न.1 का इस्तेमाल करते हुए वचन बदलो

(आ की मात्रा ए के मात्रा में बदल जाना)

कपडा- ----- लड़का - ----- चूहा - -----

नियम न. -2

(इ मात्रा ई मात्रा में बदल जाना और ---- जोड़ना)

बिल्ली- ----- रोटी - -----

चूड़ी - ----- साड़ी - -----

हमारे देश का राष्ट्रीय पक्षी मोर का फैलश कार्ड बनाना और 5 वाक्य लिखना।

10 पन्ने हिंदी सुलेख लिखना।

## **ENGLISH**

- 1. Complete 10 pages of cursive handwriting book .**
- 2. If you can have one superpower, what would it be and why?**
- 3. Write 25 WORDS with using CH , SH , TH, PH .**  
( Example – CH : chop , SH – sheet , TH : think, PH : phone )
- 4. Write 20 WORDS using OA, EA ,EE, AU, OO .**  
( Example – OA : goat , EA : neat ,EE: sheep , AU : fault , OO: boot )
- 5. Write a short story with a picture . Find noun , pronoun and adjectives from the story .**
- 6. Make two charts (By cut a single chart into 2 parts) :-**
  - 1. Word of the day**
  - 2. Thought of the day**

## **TWAU ( THE WORLD AROUND US )**

- 1. Make a model of best out of waste.**
- 2. Select any one traditional occupation. Paste the picture and write the information about it.**

**3. Collect the fallen leaves of at least 10 different plants. Use your imagination and create any creature of your choice (rat, turtle, fish, butterfly and spider).**

**4. Tulsi leaves are used to treat colds, coughs and bronchitis.**

**Find out about at least 5 more medicinal plants and write their medicinal use. You can paste the pictures of these plants.**

## **MATHS**

**1) Write 1-20 tables. (1 time)**

**2) Prepare a model of any monument/building using 3-D shapes like cylinder, cubes, cuboids, arches, etc. (eg. Tajmahal, Qutub Minar, Burg Khalifa, Eiffel Tower, etc.)**

**3) Prepare 3D model of triangular prism, square prism, triangular pyramid and square pyramid using straws.**

**4)Write the differences between pyramid and prism. (inA4 sheet)**

### **ART EDUCATION**

**1)Draw and colour any two traditional designs or folk art with line work .. ex: Mandala, Warli etc.**

**2)Draw a pot and decorate with different type of lines and colours .**

**3)Make any one face Mask of Any animal or bird as your choice.**

**4)Make any one cardboard craftwork.**

**5)Make a paper collage of any bird or animal of your choice.**

- **All the work should be done on separate A4 size sheets and compile in a one plastic folder.**

### **COMPUTER**

**I. Choose the correct option from the following questions:**

**1.Who is known as the Father of the Computer?**

- a) Steve Jobs
- b) Charles Babbage
- c) Bill Gates
- d) Alan Turing

**2. What was the first mechanical computer called?**

- a) ENIAC

- b) Abacus
- c) Analytical Engine
- d) Calculator

**3. Which of these is the earliest calculating device?**

- a) Calculator
- b) Computer
- c) Abacus
- d) Typewriter

**4. Who invented the first programmable computer?**

- a) Steve Jobs
- b) Alan Turing
- c) Konrad Zuse
- d) Tim Berners-Lee

**5. Which company created the first personal computer?**

- a) Microsoft
- b) IBM
- c) Apple
- d) Google

**6. Which one of these is NOT a type of computer?**

- a) Laptop
- b) Tablet
- c) Phone
- d) Fridge

**7.What did people use before computers to do calculations?**

- a) Television
- b) Typewriter
- c) Abacus
- d) Radio

**8. Who started Microsoft?**

- a) Steve Jobs
- b) Charles Babbage
- c) Bill Gates
- d) Mark Zuckerberg

**9.Which of the following is a type of computer that fits in your hand?**

- a) Laptop
- b) Tablet
- c) Server
- d) Mainframe

**10.What kind of computer do we usually see at home or school on a desk?**

- a) Laptop
- b) Server
- c) Desktop
- d) Supercomputer

**11.Which type of computer is often used for gaming and office work?**

- a) Supercomputer
- b) Laptop

- c) Mainframe
- d) Calculator

**12. Which of the following is NOT a type of computer?**

- a) Tablet
- b) Smartphone
- c) Microwave
- d) Desktop



## **II Fill in the blanks**

1. The first calculating device was the \_\_\_\_\_.
2. \_\_\_\_\_ is known as the Father of the Computer.
3. The \_\_\_\_\_ was the first electronic general-purpose computer.
4. \_\_\_\_\_ was invented by Blaise Pascal.
5. The \_\_\_\_\_ was designed by Charles Babbage.
6. The first generation computers used \_\_\_\_\_
7. The second generation computers used \_\_\_\_\_.
8. The third generation computers used \_\_\_\_\_
9. The fourth generation computers used \_\_\_\_\_
10. The fifth generation computers are based on \_\_\_\_\_

## **III Match the following**

A (Computer Type)	B (Description)
1. Desktop Computer	a) The most powerful computer
2. Laptop	b) A computer that fits in your pocket
3. Supercomputer	c) A portable computer with a battery
4. Smartphone	d) Used on a desk at home or school
5. Mainframe	e) Used by many users in big companies

#### IV Identify the following components/devices

Sl.No	Component/Device	Name
1		
2		
3		
4		
5		
6		



