

PM SHRI KENDRIYA VIDYALAYA BOUDH**SUMMER VACATION HOME WORK, 2026-27****CLASS- X****SCIENCE****SUB TEACHER- S. SETH**

Instructions: Do in the HOMEWORK NOTE.**CHAPTER- CHEMICAL EQUATION & REACTION****SECTION A — Multiple Choice Questions (MCQ) [1 Mark Each]**

Q1. Which of the following is NOT an observation that indicates a chemical reaction has taken place?

- (a) Change in colour (b) Change in shape
(c) Evolution of a gas (d) Change in temperature

Q2. A chemical equation is balanced in accordance with which law?

- (a) Law of constant proportions (b) Law of multiple proportions
(c) Law of conservation of mass (d) Law of definite proportions

Q3. Which of the following is a combination reaction?

- (a) $\text{CaCO}_3 \rightarrow \text{CaO} + \text{CO}_2$ (b) $2\text{H}_2\text{O} \rightarrow 2\text{H}_2 + \text{O}_2$
(c) $\text{CaO} + \text{H}_2\text{O} \rightarrow \text{Ca}(\text{OH})_2$ (d) $\text{Fe} + \text{CuSO}_4 \rightarrow \text{FeSO}_4 + \text{Cu}$

Q4. In the reaction $2\text{Pb}(\text{NO}_3)_2 \rightarrow 2\text{PbO} + 4\text{NO}_2 + \text{O}_2$, which type of reaction is this?

- (a) Combination (b) Displacement (c) Double displacement (d) Decomposition

Q5. $\text{Fe}_2\text{O}_3 + 2\text{Al} \rightarrow \text{Al}_2\text{O}_3 + 2\text{Fe}$. This reaction is an example of:

- (a) Combination reaction (b) Displacement reaction
(c) Double displacement reaction (d) Decomposition reaction

Q6. Reactions in which heat is released along with the formation of products are called:

- (a) Endothermic reactions (b) Exothermic reactions
(c) Decomposition reactions (d) Displacement reactions

Q7. Which of the following represents an endothermic reaction?

- (a) Burning of natural gas (b) Respiration (c) Electrolysis of water (d) Combustion of coal

- Q8. In a redox reaction, the substance that gains oxygen is:
(a) Reduced (b) Oxidised (c) Displaced (d) Precipitated
- Q9. When lead nitrate solution is added to potassium iodide solution, the colour of the precipitate formed is:
(a) White (b) Blue (c) Yellow (d) Green
- Q10. Chips manufacturers flush bags of chips with nitrogen gas in order to:
(a) Keep chips crisp (b) Prevent oxidation (rancidity)
(c) Increase shelf life by dehydration (d) Reduce the weight of the bag

SECTION B — Short Answer Questions [2 Marks Each]

- Q1. Why should a magnesium ribbon be cleaned with sandpaper before burning in air?
- Q2. What is a skeletal chemical equation? Why is it necessary to balance a chemical equation?
- Q3. Distinguish between exothermic and endothermic reactions. Give one example of each.
- Q4. What is a precipitation reaction? Write a balanced chemical equation for any one example.
- Q5. A substance 'X' is used for whitewashing.
(i) Name substance 'X' and write its formula.
(ii) Write the balanced equation for its reaction with water.

SECTION C — Short Answer Questions [3 Marks Each]

- Q1. Balance the following chemical equations:
(a) $\text{Fe} + \text{H}_2\text{O} \rightarrow \text{Fe}_3\text{O}_4 + \text{H}_2$
(b) $\text{HNO}_3 + \text{Ca}(\text{OH})_2 \rightarrow \text{Ca}(\text{NO}_3)_2 + \text{H}_2\text{O}$
(c) $\text{NaOH} + \text{H}_2\text{SO}_4 \rightarrow \text{Na}_2\text{SO}_4 + \text{H}_2\text{O}$
- Q2. Explain oxidation and reduction with reference to gain or loss of oxygen and hydrogen. Give one example of a redox reaction and identify the substance oxidised and the substance reduced.
- Q3. Describe three types of decomposition reactions with one balanced equation each (thermal, electrolytic, and photolytic decomposition).
- Q4. What is the difference between displacement and double displacement reactions? Write one balanced equation for each type.

Q5. On adding a drop of barium chloride solution to an aqueous solution of sodium sulphide, a white ppt is obtained.

- (i) Write balanced chemical equations of the reaction involved?
- (ii) What other name can be provided for this precipitation reaction?
- (iii) On combined dilute hydrochloric acid HCl to the reaction mixture, white ppt disappears. Why?

SECTION D — Long Answer Questions [5 Marks Each]

Q1. A metal X forms a salt XSO_4 . The salt XSO_4 forms a clear solution in water which reacts with sodium hydroxide solution to form a blue precipitate Y. Metal X is used in making electric wires and alloys like brass.

- (a) What do you think metal X could be?
- (b) Write the name, formula and colour of salt XSO_4 .
- (c) What is the blue precipitate Y?
- (d) Write a chemical equation of the reaction which takes place when salt XSO_4 reacts with sodium hydroxide solution.

Q2. (a) Explain the following types of chemical reactions with one balanced equation and one real life example each:

- (i) Combination reaction (ii) Decomposition reaction (iii) Displacement reaction (b)

In Activity 1.9 (iron nails dipped in copper sulphate solution), explain:

- (i) Why does the blue colour of copper sulphate solution fade?
- (ii) Why does the iron nail become brownish
- (iii) Write the balanced chemical equation for this reaction and name its type.

CASE BASED STUDY QUESTIONS

Q1. A chemical reaction is a representation of chemical change in terms of symbols and formulae of reactants and products. There are various types of chemical reactions like combination, decomposition, displacement, double displacement, oxidation and reduction reactions. Reactions in which heat is released along with the formation of products are called exothermic chemical reactions. All combustion reactions are exothermic reactions.

- (i) The chemical reaction in which a single substance breaks down into two or more simpler substances upon heating is known as.

(ii) The massive force that pushes the rocket forward through space is generated due to the

- (a) combination reaction (b) decomposition reaction
 (c) displacement reaction (d) double displacement reaction

(iii) A white salt on heating decomposes to give brown fumes and yellow residue is left behind. The yellow residue left is of

(iv) Which of the following reactions represents a combination reaction?

- (a) $\text{CaO (s)} + \text{H}_2\text{O (l)} \rightarrow \text{Ca(OH)}_2 \text{ (aq)}$
 (b) $\text{CaCO}_3 \text{ (s)} \rightarrow \text{CaO (s)} + \text{CO}_2 \text{ (g)}$
 (c) $\text{Zn(s)} + \text{CuSO}_4 \text{ (aq)} \rightarrow \text{ZnSO}_4 \text{ (aq)} + \text{Cu(s)}$
 (d) $2\text{FeSO}_4 \text{ (s)} \rightarrow \text{Fe}_2\text{O}_3 \text{ (s)} + \text{SO}_2 \text{ (g)} + \text{SO}_3 \text{ (g)}$

(v) Complete the following statements by choosing correct type of reaction for X and Y.

Statement 1: The heating of lead nitrate is an example of 'X' reaction.

Statement 2: The burning of magnesium is an example of 'Y' reaction.

- (a) X- Combination, Y- Decomposition
 (b) X- Decomposition, Y-Combination
 (c) X- Combination, Y-Displacement
 (d) X- Displacement, Y-Decomposition

CHAPTER- LIFE PROCESSES

SECTION A — Multiple Choice Questions (MCQ) [1 Mark Each]

Q1. Which of the following is the correct equation for photosynthesis?

- (a) $6\text{CO}_2 + 6\text{H}_2\text{O} \rightarrow \text{C}_6\text{H}_{12}\text{O}_6 + 6\text{O}_2$
 (b) $6\text{CO}_2 + 12\text{H}_2\text{O} \rightarrow \text{C}_6\text{H}_{12}\text{O}_6 + 6\text{O}_2 + 6\text{H}_2\text{O}$
 (c) $\text{C}_6\text{H}_{12}\text{O}_6 + \text{O}_2 \rightarrow \text{CO}_2 + \text{H}_2\text{O} + \text{Energy}$
 (d) $6\text{CO}_2 + 6\text{H}_2\text{O} + \text{Energy} \rightarrow \text{C}_6\text{H}_{12}\text{O}_6$

Q2. The kidneys in human beings are a part of the system for:

- (a) Nutrition (b) Respiration (c) Excretion (d) Transportation

Q3. The xylem in plants is responsible for:

- (a) Transport of food (b) Transport of amino acids
(c) Transport of water and minerals (d) Transport of oxygen

Q4. Breakdown of pyruvate to give CO₂, water and energy takes place in:

- (a) Cytoplasm (b) Chloroplast (c) Nucleus (d) Mitochondria

Q5. The autotrophic mode of nutrition requires:

- (a) CO₂ and water only (b) Chlorophyll only (c) Sunlight only (d) All of the above

Q6. Which enzyme in saliva breaks down starch?

- (a) Pepsin (b) Lipase (c) Salivary amylase (d) Trypsin

Q7. The respiratory pigment in human beings is:

- (a) Chlorophyll (b) Bile (c) Plasma (d) Haemoglobin

Q8. The first step of respiration (glycolysis) takes place in the:

- (a) Mitochondria (b) Nucleus (c) Cytoplasm (d) Chloroplast

Q9. The opening and closing of stomatal pores is controlled by:

- (a) Epidermal cells (b) Mesophyll cells (c) Root hair cells (d) Guard cells

Q10. Which type of blood vessel carries blood away from the heart?

- (a) Vein (b) Artery (c) Capillary (d) Lymph vessel

Q11. The basic filtration unit of the kidney is called:

- (a) Alveolus (b) Bowman's capsule (c) Glomerulus (d) Nephron

Q12. In anaerobic respiration in yeast, glucose is converted into:

- (a) Lactic acid + Energy (b) CO₂ + Water + Energy
(c) Ethanol + CO₂ + Energy (d) Pyruvate + Energy

Q13. The food-conducting tissue in plants is:

- (a) Xylem (b) Epidermis (c) Cortex (d) Phloem

Q14. The inner lining of the small intestine has finger-like projections called:

- (a) Cilia (b) Nephrons (c) Villi (d) Alveoli

Q15. The normal blood pressure reading (systolic/diastolic) in a healthy adult is:

- (a) 80/120 mm Hg (b) 120/80 mm Hg (c) 100/60 mm Hg (d) 140/90 mm Hg

Q16. Which organism uses the anaerobic mode of respiration?

- (a) Tiger (b) Human beings (c) Fish (d) Yeast

Q17. Bile juice, needed for fat digestion, is secreted by the:

- (a) Pancreas (b) Stomach (c) Liver (d) Small intestine

Q18. Loss of water in the form of vapour from aerial parts of a plant is called:

- (a) Translocation (b) Osmosis (c) Transpiration (d) Diffusion

Q19. Fishes have how many chambers in their heart?

- (a) Four (b) Three (c) One (d) Two

Q20. The energy currency of the cell is:

- (a) ADP (b) DNA (c) ATP (d) Glucose

SECTION B — Short Answer Questions [2 Marks Each]

Q1. What is the role of saliva in the digestion of food?

Q2. Why is diffusion insufficient to meet the oxygen requirements of multicellular organisms like humans?

Q3. What is the function of digestive enzymes? Give one example.

Q4. What is transpiration? State its two important functions.

Q5. What criteria do we use to decide whether something is alive?

Q6. What is the role of hydrochloric acid (HCl) in the stomach?

Q7. What is lymph? State one of its functions.

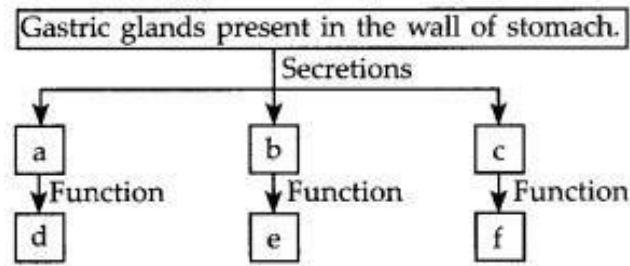
Q8. Distinguish between arteries and veins.

Q9. Name two methods used by plants to get rid of excretory products.

Q10. How does Amoeba obtain its nutrition?

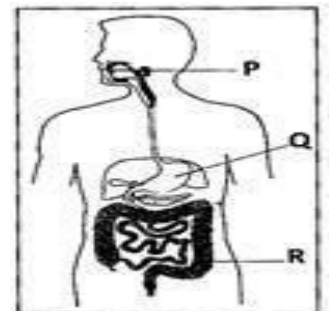
SECTION C — Short Answer Questions [3 Marks Each]

- Q1 What are the differences between aerobic and anaerobic respiration? Name some organisms that use the anaerobic mode of respiration.
- Q2 How are the alveoli designed to maximise the exchange of gases in the lungs?
- Q3 Complete the following flow chart as per the given instructions.



- Q4 What are the components of the transport system in human beings? State the function of each component.
- Q5 What are the differences between autotrophic and heterotrophic nutrition? Give two examples of each.
- Q6 How is water transported from roots to leaves in plants? Name the forces involved.
- Q7 Describe the structure of a nephron and explain how urine is formed.
- Q8 Why is it necessary to separate oxygenated and deoxygenated blood in mammals and birds? How is this achieved in the human heart?
- Q9 What are the necessary conditions for autotrophic nutrition and what are its by-products?
- Q10 Observe the figure and answer:

- i) Identify P, Q and R in the given figure? ii) Name the types of food digested there?
 digested there? iii) Name the active and inactive enzymes present there.



SECTION D — Long Answer Questions [5 Marks Each]

- Q1 Describe the process of digestion of food in the human alimentary canal, mentioning the role of each organ and the enzymes involved at each stage.

Q2 Describe double circulation in human beings. Why is it necessary? Also explain how blood pressure is maintained in the body.

Q3 Explain the different pathways by which glucose is broken down in organisms to provide energy. Draw a labelled flow diagram showing all pathways.

Q4 Compare the structure and functioning of alveoli in the lungs and nephrons in the kidneys with respect to their structure, function and design significance.

Q5 What is photosynthesis? Explain the events that occur during photosynthesis and describe how plants obtain each of the raw materials required for the process.

CASE BASED STUDY QUESTIONS

15) A student was performing an activity to prove the requirements for photosynthesis. During this activity, he kept two identical healthy potted plants A and B in dark for 72 hours. After 72 hours, he covered plant A and B by bell shaped jars separately. While covering the plants with separate bell jars, he kept KOH in the watch glass by the side of the plant in setup A and not in setup B. Both these setups were made air tight and were kept in light for 6 hours. Then, Iodine Test was performed with one leaf from each of the two plants A and B.

i) This experimental set up is used to prove essentiality of which of the following requirements of photosynthesis?

(a) Chlorophyll (b) Oxygen (c) Carbon dioxide (d) Sunlight

ii) The function of KOH is to absorb

(a) Oxygen. (b) Carbon dioxide. (c) Moisture. (d) Sunlight

iii) Which of the following statements shows the correct results of Iodine Test performed on the leaf from plant A and B respectively?

(a) Blue - black colour would be obtained on the leaf of plant A

(b) Blue - black colour would be obtained on the leaf of plant B

(c) Red colour would be obtained on the leaf of plant A (d)

Red colour would be obtained on the leaf of plant B

=====

PM SHRI KENDRIYA VIDYALAYA BOUDH
COMPETANCY BASED QUESTION FOR CLASS X MATH
SUMMER VACATION HOLIDAY HOMEWORK

Chapter -1 REAL NUMBERS

Question 1 On Diwali, Megha decorated her balcony with colored bulbs. These bulbs are arranged in the pattern red, yellow and blue. The red bulb blinks after every 5 seconds, the yellow bulbs blink after every 8 seconds and the blue bulbs blink after every 10 seconds.

- (i) After how many seconds will all the bulbs blink together?
- (ii) How many times will they blink together in 1 hour?

Question 2 2 Bells toll together at 9.00 am. They toll after 8 and 12 minutes respectively. At what time will they toll together first time after 9:00 am?

Question 3 A grill has to be fixed to a window of length 60cm and breadth 36cm. What should be the maximum width between the grill bars so that spacing between the bars are equal?

Question 4 Mrs. Latha teaches three dance classes. The first class has 24 students. The second class has 30 students. The third class has 18 students. Mrs. Latha wants to divide each class into groups so that every group in every class has the same number of students and there are no students left over.

- (i) What is the maximum number of students that she can put into each group ?
- (ii) How many groups will second class have?

Question 5 There are 104 students in Class X and 96 students in Class IX in a school. In the periodic test examination, students are to be evenly seated in parallel rows such that no two adjacent rows are of the same class.

- (i) Find the maximum number of parallel rows of each class for the seating arrangement.
- (ii) Find the number of students of Class IX and also of Class X in a row.

Question 6 Megha has 143 stamps; she gives away 11 stamps and divides the remaining equally into groups. Abdul has 220 stamps; he gives away 11 stamps and divides the remaining equally into groups. They end up with the same number of groups.

- (i) What is the number of groups?
 (ii) What is the number of stamps in Megha and Abdul's groups?

Chapter -2 Polynomials

Question 1 Sketch the graph of a polynomial function that satisfies all of the following conditions:

1. Has four real roots (x-intercepts) , two negative roots and one positive
2. Also Includes one root at the origin (x=0)

Question 2 The population of a certain species of fish in a lake can be modeled by a cubic polynomial: $P(t) = -2t^3 + 15t^2 + 30t + 100$. What is the population at year 5 ?

Question 3 Anju is designing a rectangular garden with a path around it. The area of the garden is given by the quadratic polynomial $A(x) = x^2 + 10x + 24$ where x is the width of the path.

- (i) What is the area of the garden when the path is 3 meters wide?
- (ii) If the total area is 195 square meters, what are the possible widths of the path?

Question 4: *Projectile Motion Scenario:*

A soccer ball is kicked upward with an initial velocity of 20 m/s from a 25-meter hill. The height of the ball at any time t seconds is given by the equation:

$$h(t) = -5t^2 + 20t + 25$$

where h(t) is the height in meters and t is the time in seconds.

- (i) Find the height of the ball after 3 seconds.
- (ii) Determine the time when the ball hits the ground.
- (iii) Calculate the maximum height reached by the ball and the time it takes to reach it.

Question 5: *Height of Liquid Nitrogen in a Factory Tank Scenario:*

In a factory, the height of liquid nitrogen in a sealed tank (measured in meters) is being monitored during a controlled chemical reaction. The height follows a quadratic pattern over time. The height H(t), in meters, after t minutes is given by the equation: $H(t) = t^2 - 6t + 9$

where: H(t) is the height of liquid nitrogen from the start of observation, and t is the time in minutes

- (i) What is the height after 2 minutes?
- (ii) When will the height be at its minimum?
- (iii) What is the minimum height recorded in the tank?

PAIR OF LINEAR EQUATION IN TWO VARIABLES

- 1) The sum of the digits of a two digit number is 9. The number obtained by reversing the order of digits of the given number exceeds the given number by 27. Find the given number.
- 2) . Solve the following system of equations graphically for x and y: $3x + 2y = 12$; $5x - 2y = 4$. Find the co-ordinates of the points where the lines meet the y-axis.
- 3) Find the value(s) of k so that the pair of equations $x + 2y = 5$ and $3x + ky + 15 = 0$ has a unique solution.
- 4) Find the values of a and b for which the following pair of linear equations has infinitely many solutions: $2x + 3y = 7$; $(a + b)x + (2a - b)y = 21$
- 5) Solve for x and y: $2x + 3y = 7$; $4x + 3y = 11$. Using substitution method.
- 6) The pair of linear equations $2x + 3y = 5$ and $4x + 6y = 10$ is (a) inconsistent (b) consistent (c) dependent consistent (d) none of these
7. The pair of equations $y = 0$ and $y = -7$ has
(a) one solution (b) two solutions (c) infinitely many solutions (d) no solution
8. The pair of equations $x = 4$ and $y = 3$ graphically represents lines which are
(a) parallel (b) intersecting at (3, 4) (c) coincident (d) intersecting at (4, 3)
9. A pair of linear equations which has a unique solution $x = 2, y = -3$ is
(a) $x + y = -1$; $2x - 3y = -5$ (b) $2x + 5y = -11$; $4x + 10y = -22$
(c) $2x - y = 1$; $3x + 2y = 0$ (d) $x - 4y - 14 = 0$; $5x - y - 13 = 0$
10. If $x = a, y = b$ is the solution of the pair of equations $x - y = 2$ and $x + y = 4$, then the respective values of a and b are (a) 3, 5 (b) 5, 3 (c) 3, 1 (d) -1, -3

PRACTICE SET 1**CLASS - X****FULL MARKS - 40****SECTION – A Questions 1 to 10 carry 1 marks each**

- Two lines are given to be parallel. The equation of one of the lines is $3x - 2y = 5$. The equation of the second line can be
(a) $9x + 8y = 7$ (b) $-12x - 8y = 7$ (c) $-12x + 8y = 7$ (d) $12x + 8y = 7$
 - What is the value of k such that the following pair of equations have infinitely many solutions?
 $x - 2y = 3$ and $-3x + ky = -9$.
(a) -6 (b) -3 (c) 3 (d) 6
 - The pair of linear equations $(3/2)x + (5/3)y = 7$ and $9x + 10y = 14$ is
(a) consistent (b) inconsistent
(c) consistent with one solution (d) consistent with many solutions
 - If the system of equations $3x + y = 1$ and $(2k - 1)x + (k - 1)y = 2k + 1$ is inconsistent, then $k =$
(a) -1 (b) 0 (c) 1 (d) 2
 - The values of x and y satisfying the two equations $32x + 33y = 34$, $33x + 32y = 31$ respectively
Are (a) $-1, 2$ (b) $-1, 4$ (c) $1, -2$ (d) $-1, -4$
 - What is the value of q if $p/2 + 3q = 6$ and $2p - 2q = 10$?
(a) 1 (b) 4 (c) 6 (d) 16
 - If the lines given by $3x + 2ky = 2$ and $2x + 5y + 1 = 0$ are parallel, then the value of k is
(a) $-5/4$ (b) $2/5$ (c) $15/4$ (d) $3/2$
 - The pair of equations $ax + 2y = 9$ and $3x + by = 18$ represent parallel lines, where a, b are integers, if :
(a) $a = b$ (b) $3a = 2b$ (c) $2a = 3b$ (d) $ab = 6$
- In the following questions 9 and 10, a statement of assertion (A) is followed by a statement of reason (R). Mark the correct choice as:
- Both assertion (A) and reason (R) are true and reason (R) is the correct explanation of assertion (A).
 - Both assertion (A) and reason (R) are true but reason (R) is not the correct explanation of assertion (A).
 - Assertion (A) is true but reason (R) is false.
 - Assertion (A) is false but reason (R) is true.
- Assertion (A): If the pair of linear equations $3x + y = 3$ and $6x + ky = 8$ does not have a

solution, then the value of $k = 2$.

Reason (R): If the pair of linear equations $x + y - 4 = 0$ and $2x + ky = 3$ does not have a solution, then the value of $k = 2$.

10. Assertion (A): If the equation $3x - y + 8 = 0$ and $6x - ky = -16$ represent coincident lines, then the value of $k = 2$.

Reason (R): If the lines given by $3x + 2ky = 2$ and $2x + 5y + 1 = 0$ are parallel, then the value of k is 15.

SECTION – B Questions 11 to 14 carry 2 marks each.

11. For what value of k , will the following pair of equations have infinitely many solutions:

$$2x + 3y = 7 \text{ and } (k + 2)x - 3(1 - k)y = 5k + 1$$

12. If $49x + 51y = 499$, $51x + 49y = 501$, then find the value of x and y .

13. If $x = a$ and $y = b$ is the solution of the pair of equations $x - y = 2$ and $x + y = 4$, find the values of a and b .

14. The age of the father is twice the sum of the ages of his two children. After 20 years, his age will be equal to the sum of the ages of the children. Find the age of the father.

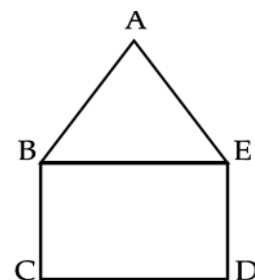
SECTION – C Questions 15 to 17 carry 3 marks each.

15. In the figure, ABCDE is a pentagon with $BE \parallel CD$ and $BC \parallel DE$. BC is perpendicular to CD.

$AE = AB = 5$ cm, $BE = 7$ cm, $BC = x - y$ and $CD = x + y$. If the perimeter of ABCDE is 27 cm.

find the value of x and y , given $x, y \neq 0$.

16. A fraction becomes $\frac{1}{3}$ when 2 is subtracted from the numerator and it becomes $\frac{1}{2}$ when 1 is subtracted from the denominator fraction.



numerator
Find the

17. If $2x + y = 23$ and $4x - y = 19$, find the value of $(5y - 2x)$

and $(\frac{y}{x} - 2)$

SECTION –D Question 18 carry 5 marks

18. Determine graphically the co-ordinates of the vertices of triangle, the equations of whose sides are given by $2y - x = 8$, $5y - x = 14$ and $y - 2x = 1$.

CASE BASED QUESTIONS

SECTION E – Questions 19 to 20 carry 4 marks each

19. A book store shopkeeper gives books on rent for reading. He has variety of books in his store related to fiction, stories and quizzes etc. He takes a fixed charge for the first two days and an

additional charge for subsequent days. Amruta paid ₹ 22 for a book and kept for 6 days; while Radhika paid ₹ 16 for keeping the book for 4 days.



Assume that the fixed charge be ₹ x and additional charge (per day) be ₹ y .

- (a) Represent the situation of amount paid by Radhika and Amruta algebraically.
- (b) What are the fixed charges for a book and the additional charges for each subsequent day for a book?

(c) What is the total amount paid by both, if both of them have kept the book for 2 more days?

20. Two friends purchased the same company car and same green colour. They are travelling in separate car which starts at place A and other car at place B. Place A and B are 100 km apart on a highway. One car starts from A and another from B at the same time. Situation 1: If the cars travel in the same direction at different speeds, they meet in 5 hours. Situation 2: If they travel towards each other, they meet in 1 hour.



- (a) Assuming that the speed of first car and second car be x km/h and y km/h respectively, find the pair of linear equations representing the situations.
- (b) What is the speed of car starts at A and speed of car starts at B?

=====

PM SHRI KENDRIYA VIDYALAYA BOUDH
HOLIDAY HOMEWORK FOR SUMMER VACATION.
SST CLASS-9 (Session: 2026-27)

SECTION A: Multiple choice questions:

Q1. A district reports rising income levels, but malnutrition and illiteracy remain high. What does this indicate?

- (a) Complete development. (b) Income-based development only
 (c) Balanced development. (d) No development

Q2. Two workers earn the same salary. One has access to healthcare and education, the other does not. Who is better off?

- (a) Both equally. (b) First worker. (c) Second worker. (d) Cannot be determined

Q3. A company increases profit by cutting forests and polluting rivers. What type of development is shown?

- (a) Sustainable. (b) Short-term unsustainable. (c) Balanced. (d) Social

Q4. In a survey, farmers demand higher prices, while consumers demand lower prices. This shows:

- (a) Similar goals. (b) No development Conflicting. (c) developmental goals. (d)

Equal distribution

Q5. A country focuses only on increasing GDP but ignores public health. What is likely outcome?

- (a) High human development. (b) Poor quality of life.
 (c) Equal growth. (d) Sustainable development

Q6. A village installs solar panels instead of diesel generators. This reflects:

- (a) Economic growth. (b) Industrialization. (c) Sustainable development. (d)

Inequality

Q7. Groundwater is used faster than it is replenished. What will be the long-term impact?

- (a) Increased supply. (b) Resource depletion. (c) Sustainable growth. (d) Equal

use

Q8. A rich country has high income inequality. What does this suggest?

- (a) Equal development (b) Income is fairly distributed
(c) Development is uneven (d) No development

Q9. A government invests in education and healthcare despite moderate income levels. This reflects:

- (a) Low development (b) Focus on human development
(c) Only economic growth. (d) No progress

Q10. A country improves literacy but ignores employment generation. What problem may arise?

- (a) High income. (b) Unemployment. (c) Sustainability. (d) Equality

Q11. A country allows different communities to participate in governance. What is the outcome?

- (a) Conflict increases. (b) Democracy weakens. (c) Stability improves. (d) Power centralizes

Q12. A government concentrates all power in one leader. What is the likely result?

- (a) Equality (b) Stability. (c) Power sharing. (d) Conflict and dissatisfaction

Q13. This method of nation-building relies mainly on:

- (a) Cultural movements (b) Political strategy and power
(c) Religious reform (d) Economic cooperation

Q14. A country ignores minority interests in policymaking. What may happen?

- (a) National unity. (b) Social harmony. (c) Conflict. (d) Growth

Q15. State governments and central government share authority. This represents:

- (a) Horizontal division. (b) Political division. (c) Social division. (d) Vertical

Q16. Legislature makes laws, judiciary interprets them. This ensures:

- (a) Separation of powers (b) Centralization. (c) Dictatorship. (d) Inequality

Q17. Power shared among religious and linguistic groups leads to:

- (a) Exclusion. (b) Inclusion. (c) Monopoly. (d) Conflict

Q18. In a diverse society, power sharing prevents:

- (a) Participation. (b) Unity. (c) Social conflicts. (d) Representation

Q19. A majority group imposes its will on minorities. This reflects:

- (a) Democracy. (b) Federalism. (c) Majoritarianism. (d) Power sharing

Q20. Local governments are given decision-making power. This leads to:

- (a) Centralization. (b) Better participation. (c) Monopoly. (d) Conflict

Q21. People from different regions unite due to shared culture and history. This indicates:

- (a) Colonialism. (b) Imperialism. (c) Nationalism. (d) Conservatism

Q22. A ruler uses wars and diplomacy to unify territories. This method reflects:

- (a) Romanticism. (b) Militarism. (c) Liberalism. (d) Federalism

Q23. Artists promote national identity through paintings and songs. This shows role of:

- (a) Economy. (b) Politics. (c) Culture. (d) Trade

Q24. Citizens demand equal rights and constitution. This reflects:

- (a) Monarchy. (b) Imperialism. (c) Conservatism. (d) Liberal nationalism

Q25. Removal of trade barriers between states leads to:

- (a) Unity. (b) Division. (c) Conflict. (d) Isolation

Q26. Policymakers should focus on:

- (a) Tax reduction only. (b) Increasing exports only
(c) Military expansion (d) Human development factors

There are two statements- ASSERTION AND REASON. Read carefully and answer the following questions. (Q.27-Q.30).

- Options:** (a) Both A and R are true, and R is the correct explanation of A
(b) Both A and R are true, but R is not the correct explanation of A
(c) A is true, but R is false

(d) A is false, but R is true

Q27. Assertion (A): Per capita income alone cannot measure development.

Reason (R): It does not show income distribution among people.

Q28. Assertion (A): Power sharing strengthens democracy.

Reason (R): It increases the possibility of conflicts.

Q29. Assertion (A): Nationalism in Europe was strengthened by cultural factors.

Reason (R): Folk traditions and language created a sense of unity.

Q30. Assertion (A): Sustainable development is essential for long-term growth.

Reason (R): Natural resources are unlimited.

SECTION B: 2 MARKS QUESTIONS

(Application-Based)

31. A country has repeated conflicts between communities.

What could be the reason? Suggest one solution.

32. A region demands independence based on shared culture. What ideas are reflected?

33. A country grows economically but pollution increases.

What type of development is this? Why.

34. Different organs of government share power equally. Identify the form of power sharing.

Why is it necessary in a democratic country?

35. Income rises but health services are poor. Is it true development? Why?

36. Explain two differences between HDI and World Bank report.

37. Explain the main two objectives of the Treaty of Vienna.

38. Who was Giuseppe Mazzini. Write any two contributions of Giuseppe Mazzini.

39. Why were the big powers interested on Balkan regions.

40. Explain how did Greece become an independent nation?

SECTION C: 3 MARKS (Analytical/HOTS)

41. Explain how power sharing reduces conflict in society.
42. Why can nationalism both unite and divide people? Explain any three reasons.
43. A country focuses only on GDP growth. What problems may arise?
44. Differentiate between horizontal and vertical power sharing with examples.
45. What is meant by per capita income? Why is it used?
46. Describe any three steps taken by Otto von Bismarck to unify Germany.
47. What is meant by the Zollverein? Explain its significance (any three points).
48. A group of students is debating whether a shared language is enough to create a sense of nationhood.

Give three reasons to explain why shared language alone may not be sufficient for nationalism.

49. Explain any three factors that led to the rise of nationalism in Europe.
50. The revolutions of 1848 failed in many parts of Europe but still had lasting impacts. Explain three outcomes of these revolutions related to nationalism.

SECTION D: 5 MARKS QUESTIONS: (Case-Based/HOTS)

51. A country has multiple ethnic groups. One group dominates politics, causing unrest. What is the issue? How can it be resolved? What values are needed?
52. Explain how nationalism contributed to the formation of modern Europe.
53. A country achieves high income but faces pollution and inequality. What type of development is this? Suggest two improvements.
54. Why is sustainable development important for future generations?
55. Compare power sharing of Belgium and Sri Lanka.
56. Describe the role of culture in the growth of nationalism in Europe.
57. Why is average income not a sufficient indicator of development? Explain.
58. Describe the main features of the Treaty of Vienna (1815).
59. How did economic developments contribute to the growth of nationalism in Europe? Explain with examples.
60. "Economic growth alone does not ensure development." Justify the statement.

...THE END...

PM SHRI KENDRIYA VIDYALAYA BOUDH
HOME WORK OF SUMMER VACATION

विषय-हिंदी

कक्षा-10

कुल प्रश्न-50

महत्वपूर्ण बहुविकल्पीय 30 प्रश्न (MCQs)

1. गोपियों ने उद्धव को 'बड़भागी' क्यों कहा है?

- (क) क्योंकि वे बहुत विद्वान थे (ख) क्योंकि वे कृष्ण के सखा थे
(ग) क्योंकि वे कृष्ण के प्रेम-बंधन से मुक्त रहे (व्यंग्य में) (घ) क्योंकि वे बहुत धनवान थे

2. 'अपसर रहत सनेह तगा तैं' में 'तगा' का क्या अर्थ है?

- (क) धागा (ख) त्याग (ग) तगादा (घ) तेल

3. गोपियों ने अपनी तुलना किससे की है?

- (क) उद्धव से
(ख) हारिल पक्षी से
(ग) भँवरे से
(घ) गुड़ से लिपटी चींटियों से

4. उद्धव द्वारा दिए गए योग-संदेश को गोपियाँ किसके समान बताती हैं?

- (क) मीठे फल के समान
(ख) कड़वी ककड़ी के समान
(ग) नीम के समान
(घ) शहद के समान

5. गोपियों के अनुसार 'राजधर्म' क्या है?

- (क) प्रजा को सताना
(ख) प्रजा का पालन करना और उसे दुखी न होने देना
(ग) युद्ध जीतना
(घ) महल में रहना

5. 'मन की मन ही माँझ रही' का क्या अर्थ है?

(क) मन की बात मन में ही रह जाना

(ख) मन प्रसन्न होना

(ग) मन चंचल होना

(घ) इनमें से कोई नहीं

6. सूरदास के पद किस भाषा में लिखे गए हैं?

(क) अवधी

(ख) ब्रजभाषा

(ग) खड़ी बोली

(घ) मैथिली

7. परशुराम के क्रोध करने पर लक्ष्मण ने धनुष के टूट जाने के लिए कौन-सा तर्क दिया?

(क) धनुष बहुत पुराना और कमजोर था

(ख) राम ने इसे केवल छुआ था और यह टूट गया

(ग) बचपन में हमने ऐसी कई धनुहियाँ तोड़ी थीं

(घ) उपरोक्त सभी

8. 'भृगुकुलकेतु' शब्द किसके लिए प्रयुक्त हुआ है?

(क) श्री राम के लिए

(ख) लक्ष्मण के लिए

(ग) परशुराम के लिए

(घ) विश्वामित्र के लिए

9. परशुराम ने अपने आप को क्या कहकर अपनी वीरता का परिचय दिया?

(क) बाल ब्रह्मचारी और अति कोही

(ख) क्षत्रिय कुल का द्रोही

(ग) सहस्त्रबाहु का संहार करने वाला

(घ) उपरोक्त सभी

10. 'कौंसिक' शब्द किसके लिए प्रयोग किया गया है?

(क) परशुराम के लिए

(ख) विश्वामित्र के लिए

(ग) राजा जनक के लिए

(घ) लक्ष्मण के लिए

11. लक्ष्मण ने परशुराम के क्रोध को शांत करने के लिए राम के वचनों को किसके समान बताया?

(क) अग्नि के समान

(ख) जल के समान (शीतल)

(ग) विष के समान

(घ) अमृत के समान

12. परशुराम के अनुसार शिव का धनुष तोड़ने वाला उनका क्या है?

(क) सेवक

(ख) मित्र

(ग) शत्रु (सहस्रबाहु के समान)

(घ) शिष्य

13. तुलसीदास जी द्वारा रचित यह अंश 'रामचरितमानस' के किस कांड से लिया गया है?

(क) अयोध्या कांड

(ख) बाल कांड

(ग) अरण्य कांड

(घ) सुंदर कांड

14. लक्ष्मण ने वीर योद्धा की क्या विशेषताएँ बताई हैं?

(क) वीर योद्धा युद्ध भूमि में अपनी वीरता दिखाते हैं, डींगें नहीं मारते

(ख) वीर योद्धा शांत, विनम्र और क्षमाशील होते हैं

(ग) वे ब्राह्मण और गाय पर हाथ नहीं उठाते

(घ) उपरोक्त सभी

15. कस्बे के मुख्य बाज़ार के मुख्य चौराहे पर नेताजी की प्रतिमा किसने लगवाई थी?

(क) ज़िलाधिकारी ने

(ख) नगरपालिका के किसी उत्साही बोर्ड या प्रशासनिक अधिकारी ने

(ग) स्थानीय जनता ने

(घ) नेताजी के परिवार वालों ने

16. मूर्तिकार 'मोतीलाल' ने नेताजी की मूर्ति बनाने का काम कितनी जल्दी पूरा करने का विश्वास दिलाया था?

- (क) एक साल में
- (ख) महीने भर में
- (ग) छह महीने में
- (घ) पंद्रह दिन में

17. नेताजी की मूर्ति में क्या कमी रह गई थी?

- (क) मूर्ति की ऊँचाई कम थी
- (ख) मूर्ति का रंग अच्छा नहीं था
- (ग) नेताजी की आँखों पर चश्मा नहीं था
- (घ) टोपी की नोक टूटी हुई थी

18. हालदार साहब को पहली बार मूर्ति को देखकर क्या लगा?

- (क) मूर्तिकार आलसी था
- (ख) 'आईडिया' काफी अच्छा और सराहनीय है
- (ग) नगरपालिका के पास बजट नहीं था
- (घ) चश्मा बहुत छोटा था

19. 'कैप्टन' कौन था?

- (क) एक सैनिक
- (ख) हालदार साहब का ड्राइवर
- (ग) एक बूढ़ा, मरियल और लंगड़ा चश्मा बेचने वाला
- (घ) पान वाला

उत्तर: (ग)

20. पान वाले ने कैप्टन का उपहास (मज़ाक) उड़ाते हुए उसे क्या कहा था?

- (क) पागल
- (ख) "वह लंगड़ा क्या जाएगा फ़ौज में! पागल है पागल!"
- (ग) सच्चा देशभक्त
- (घ) बहुत होशियार आदमी

21. कैप्टन की मृत्यु के बाद नेताजी की मूर्ति पर कैसा चश्मा लगा था?

- (क) लोहे का चश्मा
- (ख) प्लास्टिक का चश्मा

(ग) सरकंडे का बना छोटा सा चश्मा

(घ) चश्मा था ही नहीं

22. बालगोबिन भगत की उम्र कितनी रही होगी?

(क) 50 वर्ष से ऊपर

(ख) 60 वर्ष से ऊपर

(ग) 70 वर्ष से ऊपर

(घ) 80 वर्ष से ऊपर

23. बालगोबिन भगत किसे अपना 'साहब' मानते थे?

(क) तुलसीदास को

(ख) सूरदास को

(ग) कबीरदास को

(घ) चैतन्य महाप्रभु को

24. भगत जी के संगीत को लेखक ने क्या कहा है?

(क) उपदेश

(ख) जादू

(ग) शोर

(घ) लोरी

25. बेटे की मृत्यु पर बालगोबिन भगत क्या कर रहे थे?

(क) रो रहे थे

(ख) विलाप कर रहे थे

(ग) गीत गा रहे थे और उत्सव मनाने को कह रहे थे

(घ) मौन धारण कर लिया था

26. बालगोबिन भगत ने अपने बेटे की चिता को अग्नि किससे दिलवाई?

(क) खुद से

(ख) अपनी पतोहू (बहू) से

(ग) गाँव के मुखिया से

(घ) अपने साले से

27. पतोहू को उसके भाई के साथ भेजते समय भगत जी ने क्या आदेश दिया?

(क) इसकी दूसरी शादी कर देना

(ख) इसे घर में ही रखना

(ग) इसे तीर्थ यात्रा पर ले जाना

(घ) इसे खूब पढ़ाना

28. आषाढ़ की रिमझिम में समूचा गाँव कहाँ उमड़ पड़ता है?

(क) मंदिरों में

(ख) खेतों में

(ग) घरों में

(घ) चौपालों पर

29. बालगोबिन भगत की प्रभातियाँ किस महीने से शुरू होती थीं?

(क) चैत से

(ख) सावन से

(ग) कार्तिक से

(घ) फागुन से

30. अंत में हालदार साहब की आँखें क्यों भर आई थीं?

(क) पान वाले की बातों को सुनकर

(ख) कैप्टन की गरीबी देखकर

(ग) बच्चों के हाथों में देश का भविष्य और देशभक्ति की भावना देखकर

(घ) नेताजी की अधूरी मूर्ति देखकर

महत्वपूर्ण लघु उत्तरीय 8 प्रश्न

1. गोपियों ने उद्धव के भाग्य की सराहना किस प्रकार की है?

2. गोपियों ने अपने प्रेम को 'गुड़ और चींटी' के उदाहरण से कैसे स्पष्ट किया है?

3. परशुराम के क्रोध करने पर राम ने क्या कहकर उन्हें शांत करने का प्रयास किया?

4. लक्ष्मण ने परशुराम के क्रोध पर व्यंग्य करते हुए क्या तर्क दिए?

5. 'कैप्टन' कौन था और वह मूर्ति का चश्मा बार-बार क्यों बदल देता था?

6. अंत में हालदार साहब भावुक क्यों हो गए?

7. बालगोबिन भगत की संगीत साधना का चरम उत्कर्ष कब देखा गया?

सामाजिक-सांस्कृतिक वातावरण आषाढ़ में कैसा हो जाता है?

8. गाँव का

महत्वपूर्ण दीर्घ उत्तरीय 8 प्रश्न

1. गोपियों ने उद्धव के 'योग-संदेश' को कड़वी ककड़ी के समान बताकर उसकी उपेक्षा क्यों की? तर्क सहित स्पष्ट कीजिए।
2. सूरदास के इन पदों के आधार पर 'भ्रमरगीत' की मुख्य विशेषताएँ स्पष्ट कीजिए।
3. परशुराम के क्रोध करने पर राम और लक्ष्मण की प्रतिक्रिया में क्या अंतर था? सोदाहरण स्पष्ट कीजिए।
4. परशुराम के व्यक्तित्व की मुख्य विशेषताओं का उल्लेख कीजिए।
5. "जब तक हालदार साहब ने कैप्टन को साक्षात् नहीं देखा था, तब तक उनके मानस पटल पर उसका कौन-सा चित्र रहा होगा?"
6. "पान वाले का एक रेखाचित्र प्रस्तुत कीजिए और उसकी मानसिकता पर प्रकाश डालिए।"
7. "बालगोबिन भगत ने समाज में व्याप्त किन रुढ़ियों पर प्रहार किया है? पाठ के आधार पर उदाहरण सहित स्पष्ट कीजिए।"
8. बालगोबिन भगत के व्यक्तित्व का रेखाचित्र खींचिए।

विश्लेषणात्मक 4 प्रश्न (Analytical Questions)

- प्रश्न:1. "प्रायः प्रेम में व्यक्ति अपनी सुध-बुध खो देता है, परंतु गोपियों के प्रेम में एक प्रकार की तार्किक दृढ़ता और बौद्धिक चातुर्य दिखाई देता है।" सूरदास के पदों के आधार पर इस कथन की पुष्टि कीजिए।
2. "परशुराम के व्यक्तित्व में 'अहंकार' और 'वीरता' का द्वंद्व दिखाई देता है। क्या आप इस कथन से सहमत हैं? स्पष्ट कीजिए।"
 3. "देशभक्ति केवल सीमा पर खड़े होने या वर्दी पहनने का नाम नहीं है।" पाठ के आधार पर स्पष्ट कीजिए कि आम नागरिक देश के प्रति अपना योगदान कैसे दे सकते हैं?
 4. "क्या वेशभूषा और बाहरी दिखावा ही किसी व्यक्ति को 'साधु' बनाता है? बालगोबिन भगत के चरित्र के आलोक में अपने विचार स्पष्ट कीजिए।"

=====

PM SHRI KV BOUDH
SUMMER HOLIDAY HOMEWORK
CLASS- X SUBJECT-ENGLISH
2026-27

(A) Choose the correct answer and write.

1. The train _____ before I reached the station.

- a) left b) had left c) has left d) leaves

2. You _____ follow the school rules strictly.

- a) can b) must c) may d) might

3. She said, "I am watching a movie."

- a) She said that she is watching a movie.
b) She said that she was watching a movie.
c) She said that I was watching a movie.
d) She says she was watching a movie.

4. Neither of the boys _____ present.

- a) are b) were c) was d) have

5. I don't have _____ money left in my wallet.

- a) few b) many c) any d) some

6. The company is producing new cars.

- a) New cars were produced by the company.
b) New cars are produced by the company.
c) New cars are being produced by the company.
d) New cars produce by the company.

7. He is married _____ an engineer.

- a) with b) of c) to d) by

8. Tenses: It _____ raining since morning.

- a) has been b) is c) was d) has

9. Reported Speech: He told me, "I can help you."

- a) He told me that he can help me. b) He told me that he could help me.
c) He tells me that he could help me. d) He told me I can help you.

10. _____ you please pass the salt?

- a) Must b) Should c) Would d) Might

Q11. Neither you nor your sister should _____ to them.

- A. talk B. talks C. talked D. talking

Q12. Twenty years _____ the minimum age to fill this form.

- A. are B. is C. has D. have

Q7. A bouquet of flowers _____ required for the event.

- A. are B. have C. has D. is

Q8. A pair of socks _____ been missing from my wardrobe.

- A. have B. has C. were D. is

Q9. Much _____ been said in the news reports.

- A. were B. have C. has D. was

Q10. The information provided to you _____ wrong.

- A. were B. was C. are D. have been

Q13. Each and every member _____ to vote.

- A. has B. have C. having D. are

Q14. A large number of soldiers _____ died for the country.

- A. has B. is C. are D. have

Q15. Half of the class _____ empty.

- A. were B. was C. has D. have

Q17. The quality of food here _____ gone down.

- A. have B. has C. is D. are

Q18. My mother, along with others, _____ worried.

- A. were B. are C. have D. was

Q19. She _____ not take a lot of stress.

- A. need B. needs C. needing D. has need

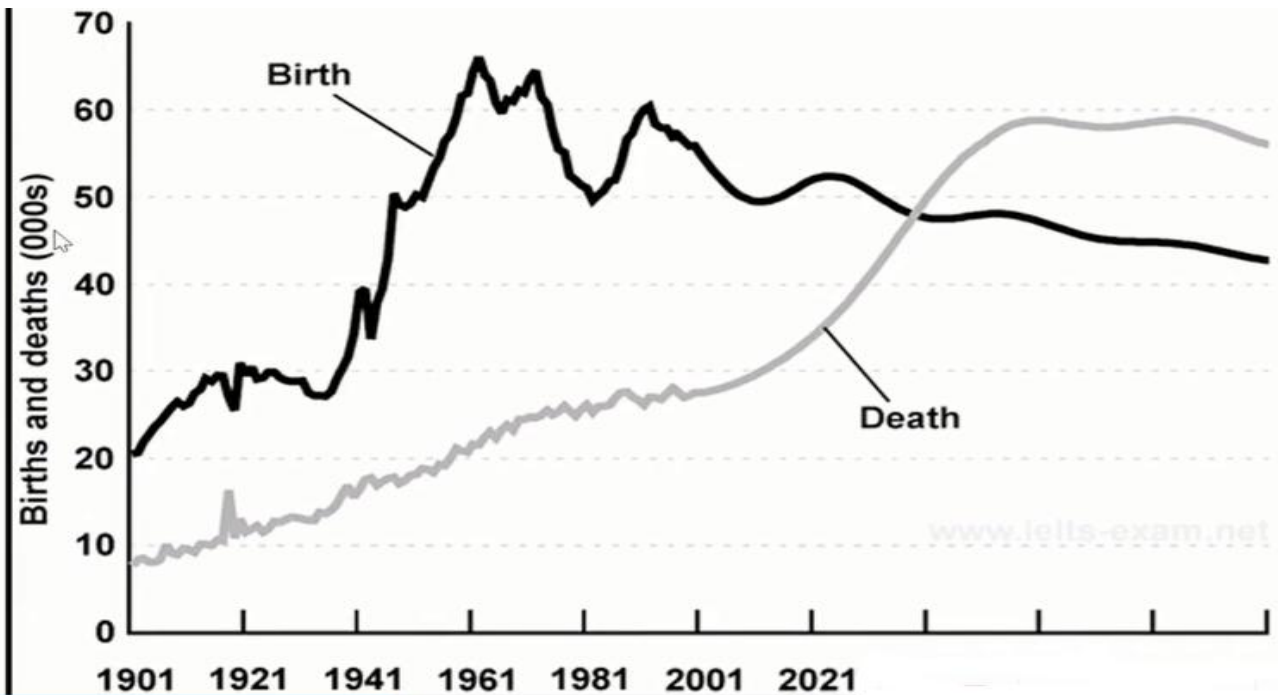
Q20. The book 'Management Principles' _____ quite insightful.

- A. are B. is C. have D. has

21. Where was Lencho's house located?

- a) At the bottom of a hill b) Top of a low hill c) In a city d) In a forest

Q.1 Q. The graph below gives information about changes in the birth and death rates in New Zealand between 1901 and 2021. Summarise the information by selecting and reporting the main features and make comparison where relevant.



2. You are Kavita Khanna, a resident of 50-C PushpVihar, New Delhi. Write a letter to the editor of 'India Today' about the article 'Ban Poly Bags' published in the latest edition.

3. You are Radha, C-15, Mayur Vihar, Delhi. Write a letter in 100-120 words to the editor of a newspaper on the consequences of climatic changes due to various man-made reasons

4. Request for better arrangement of drinking water and clean toilets.

5. Write a letter placing an order for School Library Books. (You are Aman/Amita, Librarian , Saraswati Vidya Mandir, Sambalpur)

PM SHRI KENDRIYA VIDYALAYA BOUDH
HOME WORK OF SUMMER VACATION ग्रीष्मावकाशीय गृहकार्यम्
विषय:- संस्कृतम्

कक्षा- दशमी

- 1) पञ्च-अपठित-अनुच्छेदानां प्रश्नोत्तरलेखनम् ।(सरस्वतीपुस्तकस्य अभ्यासतः)
- 2) पञ्च- चित्रवर्णनम् कुरुत ।(सरस्वतीपुस्तकस्य अभ्यासतः)
- 3) पञ्च- संवादलेखनम् ।(सरस्वतीपुस्तकस्य अभ्यासतः)
- 4) पञ्च- पत्रलेखनम् । (अनौपचारिकम्) ।(सरस्वतीपुस्तकस्य अभ्यासतः)
- 5) वाङ्मयं तपः इति पाठस्थ अन्वयं, भावार्थं, सन्धिपदानि, प्रत्ययपदानि पश्चाः च लिखत।
- 6) प्रतिदिनं संस्कृतपाठ्यपुस्तकस्य एकं पृष्ठम् (01 page) अवश्यं पठन्तु ।
- 7) संस्कृतेन समयं लिखत। 12:45, 10:15, 8:30, 02:30, 03:45, 06:15, 01:30, 11:45, 04:00, 07:15

(क)

- (i) पुरुषोत्तम-एक्सप्रेस इति रेलयानं _____ (9:30) वादने पुरीतः प्रस्थानं करोति।
- (ii) चेतक-एक्सप्रेस इति रेलयानं _____ (3:45) वादने दिल्लीम् आगच्छति।
- (iii) हावड़ा-एक्सप्रेस _____ (11:45) वादने हावड़ास्थानकं प्राप्नोति।
- (iv) रेलयानमेकं _____ (8:15) उत्तराञ्चलं प्रति गच्छति।

(ख)

- (i) राहुलः प्रातःभ्रमणाय _____ (6:15) वादने उद्यानं गच्छति।
- (ii) मल्लिका _____ (7:30) वादने प्रातराशं करोति।
- (iii) अनन्या _____ (2:45) वादने क्रीडति।
- (iv) सर्वे _____ (10:30) वादने शयनं कुर्वन्ति।

9) परियोजना-कार्यम् (PROJECT WORK)

ART INTEGRATED PROJECT

नाम- दूरदर्शने संस्कृतगीत-श्लोकानां कार्यक्रमाः

गतिविधि – दूरदर्शने गीतं श्लोकं वा दृष्ट्वा तस्य गीत/श्लोकेन सह प्रदर्शनस्य विषये

दशवाक्यानि लिखत। (त्रीणि गीतं/श्लोकं)

पृष्ठासंख्या- 6-10 IN SCRAP BOOK

Instructions:

- i) All questions are compulsory.
- ii) Answers should be written in the HW Sanskrit Note Book.
- iii) Neat works are always appreciated.

***** शुभं भूयात् All the Best*****