

Building Type : Hospital
Climate Zone : Composite
Area : 13,700m²
WWR : 40%
Conditioned Area: 12,500m²
Occupancy Type : 24 hours
ECBC Compliance: Prescriptive method
(ECBC 2007)

Lighting Power Density

LPD : 10 W/m² as per Building Area method

Fixtures : LED Bulbs

Occupancy Sensors: in corridors, toilets, offices, treatment rooms and conference rooms

HVAC Specifications

BEE 5 star rated split AC

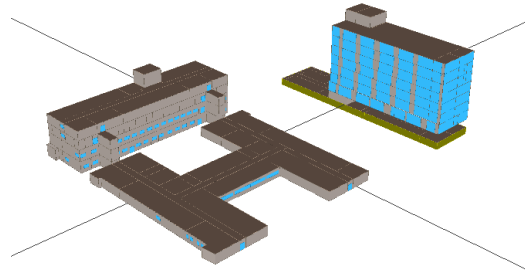
Piping and ductwork

System Description: 20 mm thick Nitrile Rubber pipe, R value of insulation: 0.38, Thickness of insulation 13 mm.

Air leakage

Envelope is sealed, caulked, gasket or weather-stripped.

Sarvodaya Super Specialty Hospital, Faridabad



The hospital building comprises of two block. The C block is four storied and D block is seven storied. The longer axis of the C block is North-South and the longer axis of the D block is East-West.

Building Envelope

Opaque wall : 20 mm Plaster + 230 mm Red brick wall + 20 mm Plaster

U-value, W/m²K: 1.98 W/m²K

Assembly thickness : 270 mm:

Roof Assembly: 50 mm cement screed+50 mm PUFF insulation + 100mm RCC slab + 50 mm Cement screed

U-value: 0.392 W/m²K

Assembly thickness : 250 mm

Glazing type 1 DGU(Double Glazed Unit)

U-value, W/m²K: 1.8, SHGC: 0.20, VLT: 24%

Exterior Lighting Details

Fixtures with minimum efficacy of 80 lumens/watt.

ECBC requirement of 20% hot water through solar water heaters