



# WORKS MIS JAL SHAKTI VIBHAG

NEW PROJECT

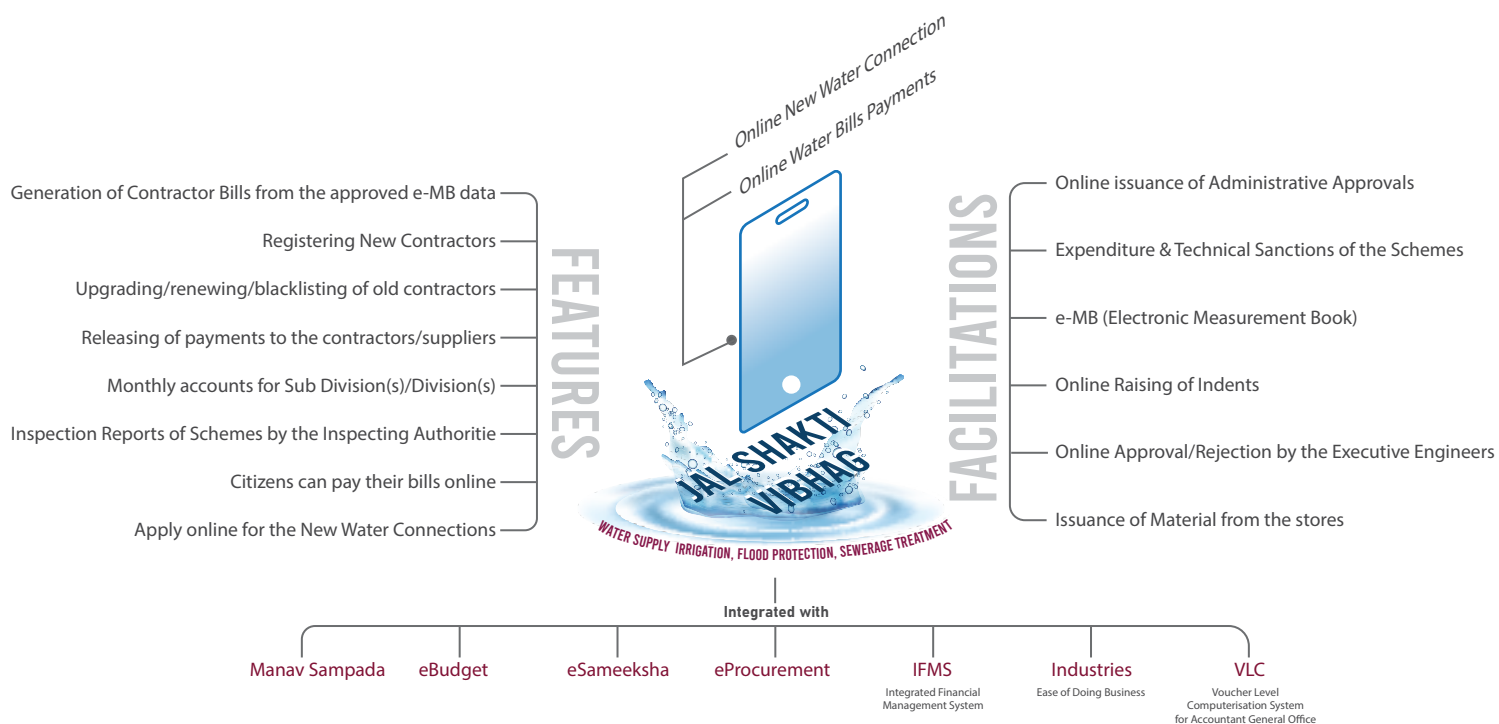


<https://iph.hp.nic.in>

## Works MIS - Jal Shakti Vibhag, Himachal Pradesh

Works MIS is a complete ERP solution developed by NIC Himachal Pradesh for Jal Shakti Vibhag of the State Government. It does not only automate the entire functioning of the Department, but also equip the decision makers with sufficient online information to offer better services to citizens through proper and timely execution of Water Supply, Irrigation, Flood Protection, Sewerage Treatment and various other schemes.

This is a work flow based system and is capable of generating all accounting and inventory reports in the real time. This application is integrated with various other applications for data exchange, thereby ensuring accuracy and reducing the duplication of efforts.



This application facilitates for online issuance of Administrative Approvals and Expenditure & Technical Sanctions of the Schemes. The application also has provision for generation of e-MB (Electronic Measurement Book), online Raising of Indents, online Approvals/Rejections by the Executive Engineers and Issuance of Material from the stores. It also has in-built features for uploading of Inspection Reports, Contractor's Management, generation of Contractor Bills and monthly accounts for Sub Division(s)/Division(s).

The application also facilitates the field offices to generate Water Bills. Citizens can pay their bills online and can apply online for the New Water Connections. The application is well supplemented with the Mobile Apps to facilitate the citizens and in reducing the footfall in the field offices.

## GUEST SPEAK

### Er. Anju Sharma

#### Engineer-in-Chief, Jal Shakti Vibhag, Himachal Pradesh

The drinking water supply is a very important issue in present era, in the light of increasing health awareness among the people and their expectations from the government to provide safe drinking water. Though, there are lots of improvements in various areas, availability of safe drinking water, both for human being and the cattle, has become a major problem due to scarcity of water sources and increased levels of the pollution.



As nearly 90% of State population lives in the rural areas, Jal Shakti Vibhag plays a vital role in rural water supply and sanitation. The Department carries out the construction and maintenance works under core sectors viz. Drinking Water Supply Schemes, Installation of Hand Pumps, Irrigation Schemes, Flood Protection Schemes and Sewerage Systems.

I congratulate NIC Himachal Pradesh for developing such a comprehensive end-to-end solution for management of various activities in an efficient, transparent and fair manner and to facilitate the general public at large.

## Tech Tips

### Archival Grade DVDs for Data Backup

Archival DVDs are the best option for long-term storage as they can last up to 60 years, if stored in a secure environment. Compared to HDDs and SSDs that typically die after 5-6 years, archival DVDs provide a reliable and maintenance-free storage solution.



Archival DVDs are not rewritable. These DVDs don't require any specialised hardware, software or accessories and any regular old DVD Drive can read or write these DVDs. Generally, these DVDs cost around 15-20 times more than the regular DVDs, but these are the great option for long-term storage.

For enhanced security, 3-2-1 Rule of Data Redundancy can be followed to protect the valuable data. In this case, 3 copies of archive are made on 2 different types of storage media of which 1 copy is stored off-location for Disaster Recovery. Using a combination of Archival DVDs, Hard Drives and Cloud Storage ensures higher data safety.

## In Focus

- Weekly technical sessions were organized under the chairmanship of the DDG-cum-SIO HP. All the officers participated enthusiastically in these technical sessions and gave presentations on latest topics of their interest. After the presentations, online quiz competitions were also organized on related topics through 'Hindi Bodh' mobile app developed by NIC Himachal Pradesh.

■ Election Quiz Mobile App was launched by the Chief Electoral Officer Himachal Pradesh, Shri Manish Garg on 10th May 2024 at Dharamshala, District Kangra. This app is designed and developed by NIC HP State Centre in collaboration with NIC District Centre Kangra. It is available on Android and iOS platforms for training and online quiz for election officials (Presiding Officers, Micro Observers and Counting Staff)



■ ICT support was provided to the Election Department for conducting recently held Lok Sabha General and Vidhan Sabha Bye-Elections 2024 in a free, fair, transparent and time bound manner. As Nodal Officers, NIC Himachal Pradesh State Centre and all the District Offices provided ICT support in all election related activities.

## Destination Triloknath Temple

Built in Shikhar style at a height of about 2760 meters above sea level, Triloknath (also known as Trilokinath) is an ancient temple. It lies in the Udaipur Sub Division of District Lahaul & Spiti of Himachal Pradesh.

The temple has a long history, dating back to the 10th century, when it was constructed by Davanjarah Rana, the forefather of the current 'Rana Thakur Rulers' of the village, who revered Rana Triloknath. The temple also owes its existence to Chamba Mahayogi Siddh Charpati Dar, a devotee of the Bodhisattva Arya Avalokiteshvara. Inside the temple, there is a six-headed marble statue of the Avalokiteshvara, which has many legends associated with it. Some legends say that King Trilokinath of Kullu attempted to take the statue away, but failed because it was too heavy.



Some say that the statue of Nandi in the Nandikeshwara Temple is a tribute to Lord Shiva and his faithful bull. They claim that the statue was carved from a single piece of granite by a skilled sculptor named Daksha.

Another tale speaks of the Saptarishis or the Seven Sages of Hindu mythology, who once visited the village. One day, Basava (a local boy) who was a devout follower of Lord Shiva, caught a glimpse of the sages and followed them to the temple. There, he saw the Lord Shiva himself and was blessed by him with a divine form. The next morning, the villagers were astonished to see that Basava had turned into a marble deity. Then they decided to build a temple there and worshipped him.

In Lahaul Valley, people of Hindu and Buddhist religions equally show reverence towards the Temples and Gompas, which spread the fragrance of secularism as well as emotional unity.

### ACCESS



**By Air** The nearest airport to the Triloknath Temple is Kullu-Manali Airport located approximately 164 km away at Bhuntar in district Kullu. From there, one can reach the Triloknath Temple by road, either by hiring a taxi or using public transport.



**By Train** The nearest broad-gauge railway stations are Kiratpur and Chandigarh located at 258 km and 346 km away respectively. The narrow-gauge railway station is 222 km away, located at Joginder Nagar. Taxis and buses are available to the Triloknath Temple from all these places.

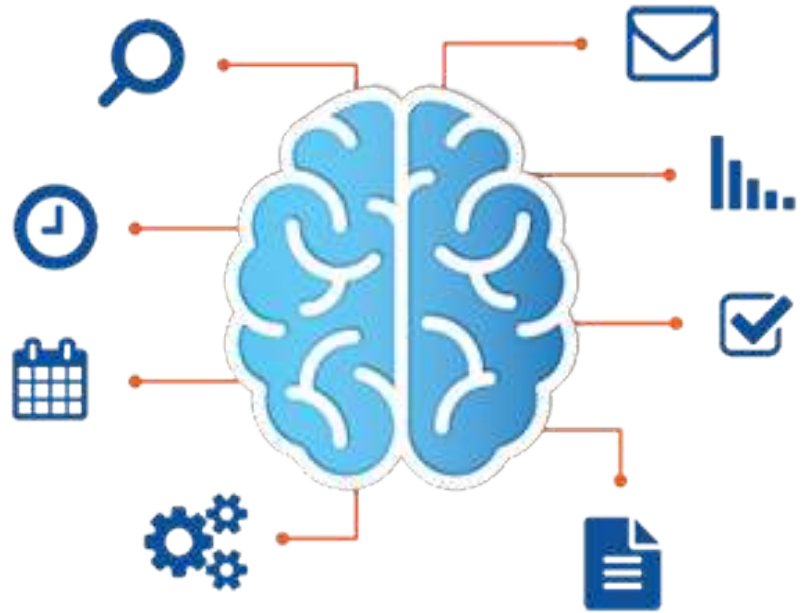


**By Road** Triloknath Temple is about 114 km away from Manali on NH3 and is well connected by roads from all the major cities.

## Tech Updates

# Intelligent Apps

Intelligent Apps allow individuals with little or no coding experience, often called as Citizen Developers and the professional developers alike to quickly build software applications. With Intelligent Apps, organizations can leverage Business Intelligence (BI) and Data Investments to drive data-informed action within people's everyday workflows.



### Why are Intelligent Apps important?

Intelligent Apps make the process of Business App creation, deployment and maintenance quicker and easier. They allow organizations to go beyond charts and graphs with customized apps that deliver actionable business insights. Most importantly, they make it possible for individuals to use and create apps without knowing how to code.

### How do Intelligent Apps work?

Intelligent Apps present users with a visual environment for developing applications. Instead of lines of code, users see components that can be dragged and dropped into place, all operating in a user-friendly interface that helps them visualize the final product as they build. Intelligent Apps use drag and drop modelers, pre-built connectors and other smart services to power the process.

### How Intelligent Apps are developed?

Developing Intelligent Apps require leveraging a wide range of technological tools across different domains. These apps can be developed using any of the development tools that generally support the Machine Learning, Deep Learning, Natural Language Processing, Computer Vision and Intelligent APIs.

### Characteristic of Intelligent Apps

The Intelligent Apps are highly contextual and appropriate. The apps make smarter use of the features of a device to proactively analyse, predict and deliver relevant recommendations and suggestions.

The Intelligent Apps are data-driven. Intelligent Apps are capable of syncing up user data from various sources like IoT Sensors and their User Interactions and converting huge amounts of data from these sources into useful and relevant insights.

The Intelligent Apps are action-oriented. The Intelligent Apps don't just predict user behaviour, they also give actionable and personalized suggestions.

The Intelligent Apps are continuously adapting. As the apps are constantly leveraging the capabilities of AI and its components, these are equipped to meet the changing demands of the users.

### Conclusion

With Intelligent Apps, anyone and everyone in an organization will be able to create rich, data-driven experiences and make better business decisions. Intelligent Apps won't replace professional developers, instead they will drive developers towards higher productivity as they can deliver apps more quickly and easily.

## Family Connect

Ms. Ankita Mishra (Scientist - B), Ms. Monika (Scientist - B) and Sh. Ramnarayan Yadav (Scientist - B) got transferred to NIC Head Quarters after rendering valuable services in NIC Himachal Pradesh for about 2-3 years. NIC Himachal Pradesh wishes a bright future to the officers.



*“ Real difficulties can be overcome; it is only the imaginary ones that are unconquerable ”*

**Theodore N. Vail**

**Advisor:** Sh. Ajay Singh Chahal

### Editorial Board

**Chief Editor :** Sh. Vinod Kumar Garg

**Editors :** Sh. Bhupinder Pathak,  
Sh. Akhilesh Bharti,  
Sh. Brijender Kumar Dogra

**Design and Creative Arts :** Sh. Sarvjeet Kumar

### Contributors

Sh. Sanjay Kumar  
Sh. Jagdeep  
Sh. Ashwani Kumar

### National Informatics Centre

HP State Centre, 6th Floor, Armsdale Building, HP Secretariat  
Shimla HP – 171002.

+91-177-2624045    sio-hp[at]nic[dot]in

<https://nichimachal.nic.in/>

