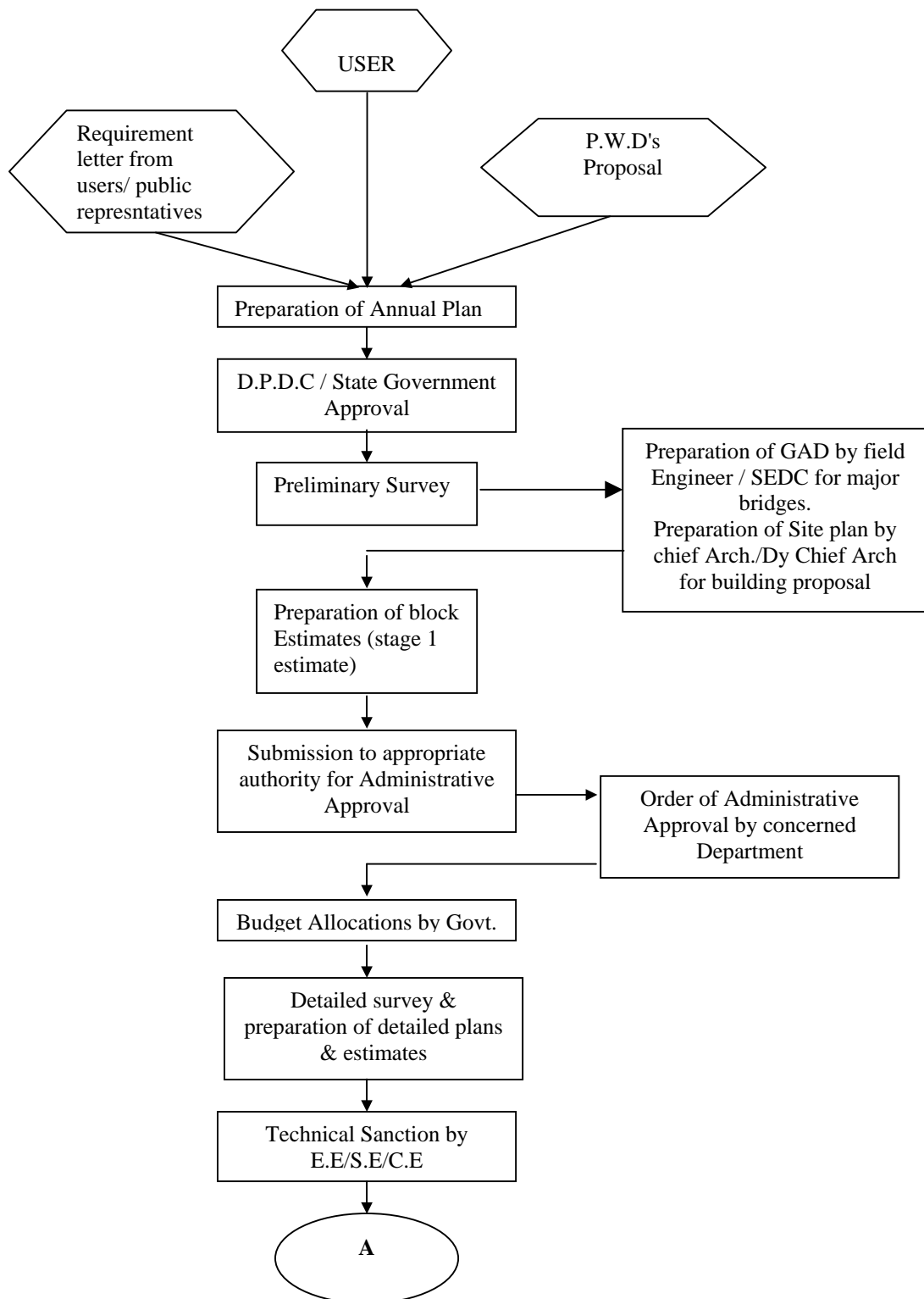
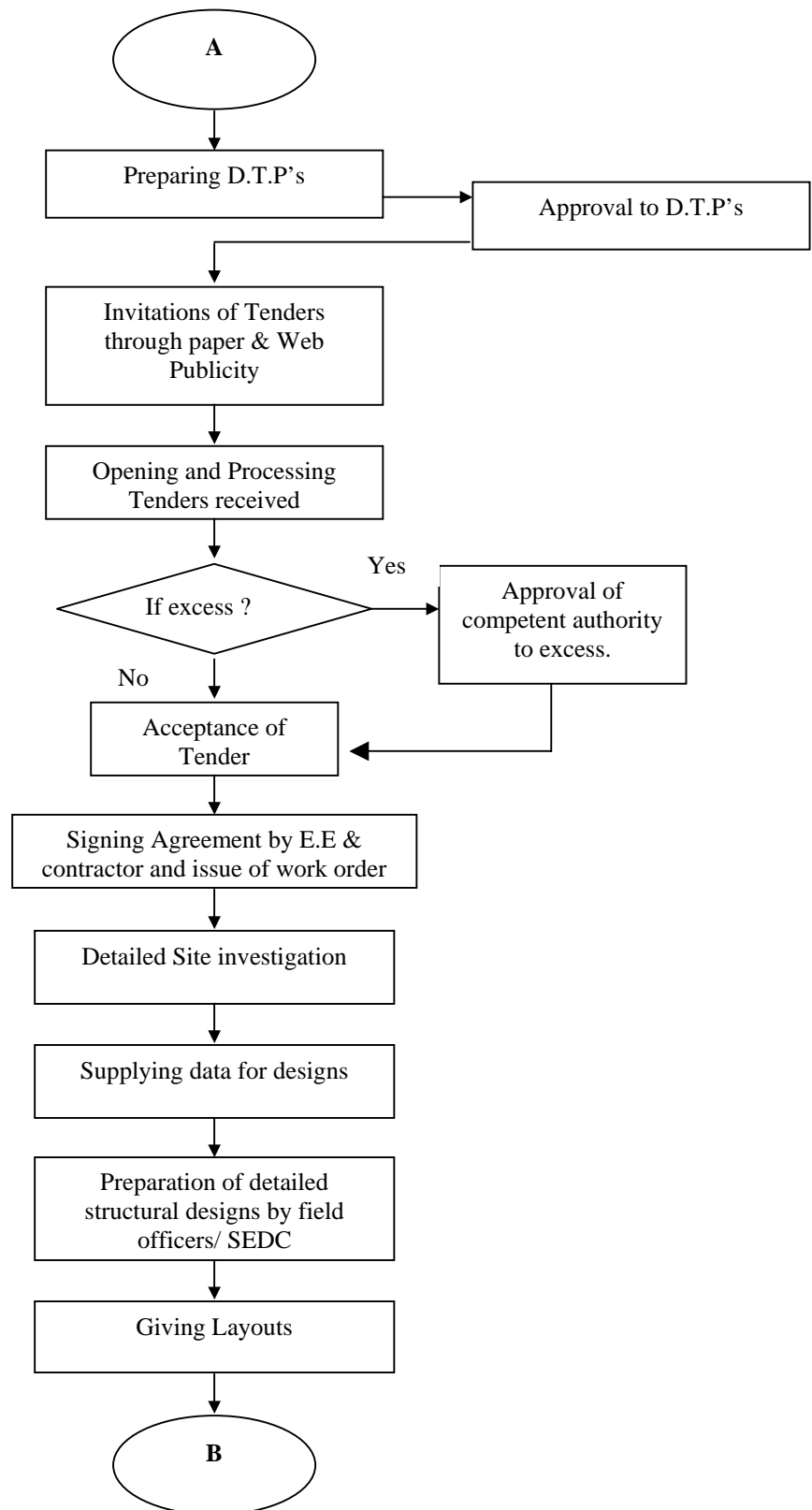
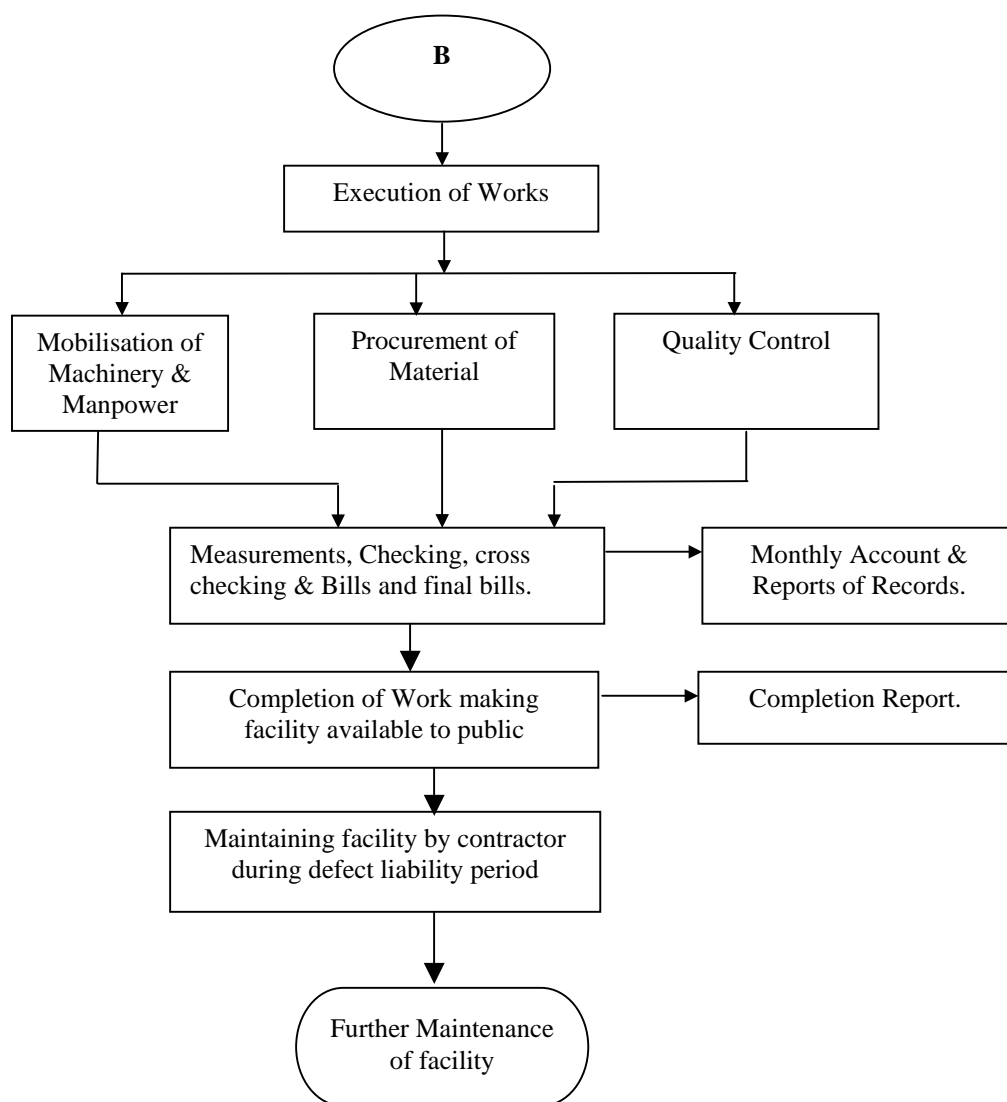


Annexure -I

Flow Chart for civil works

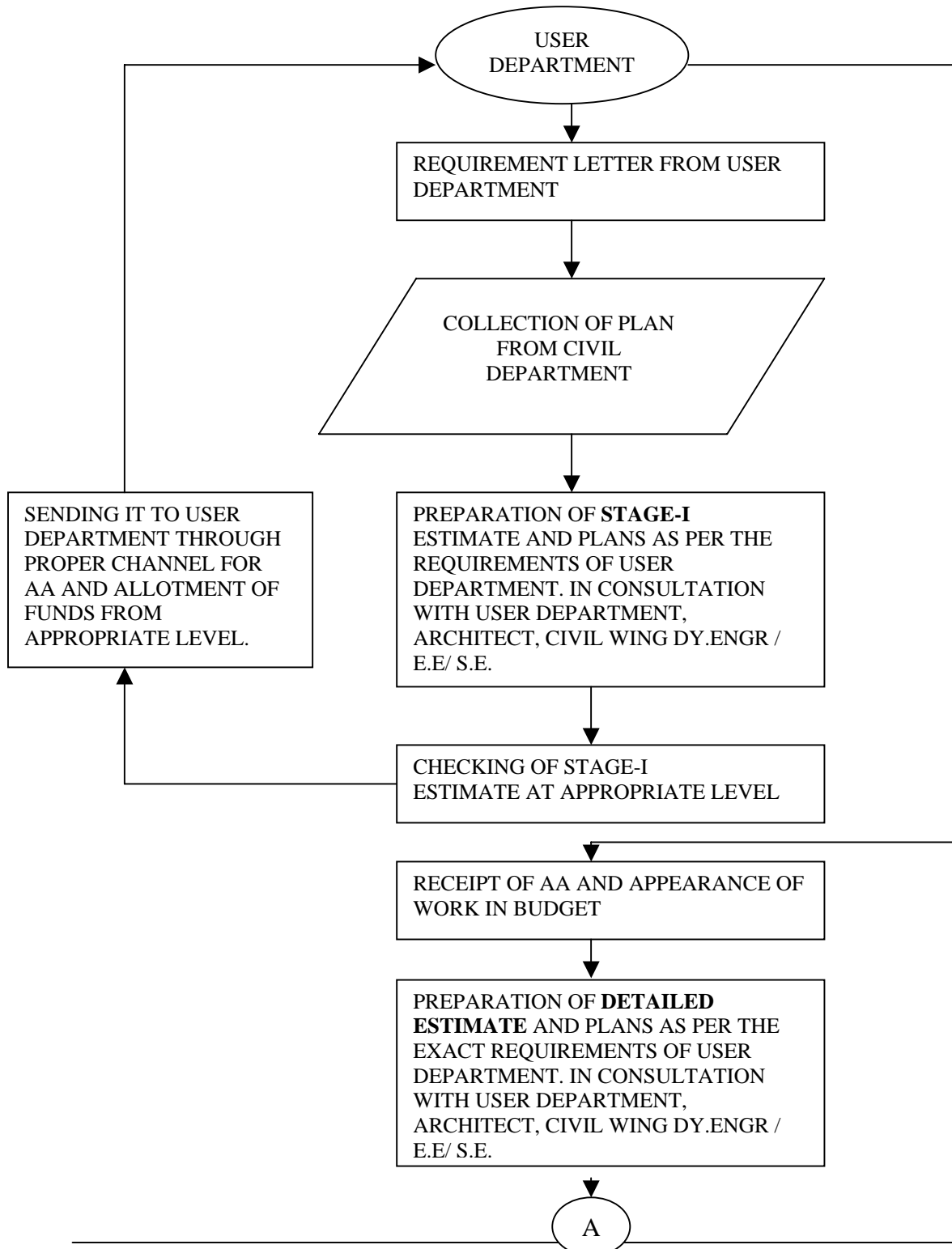


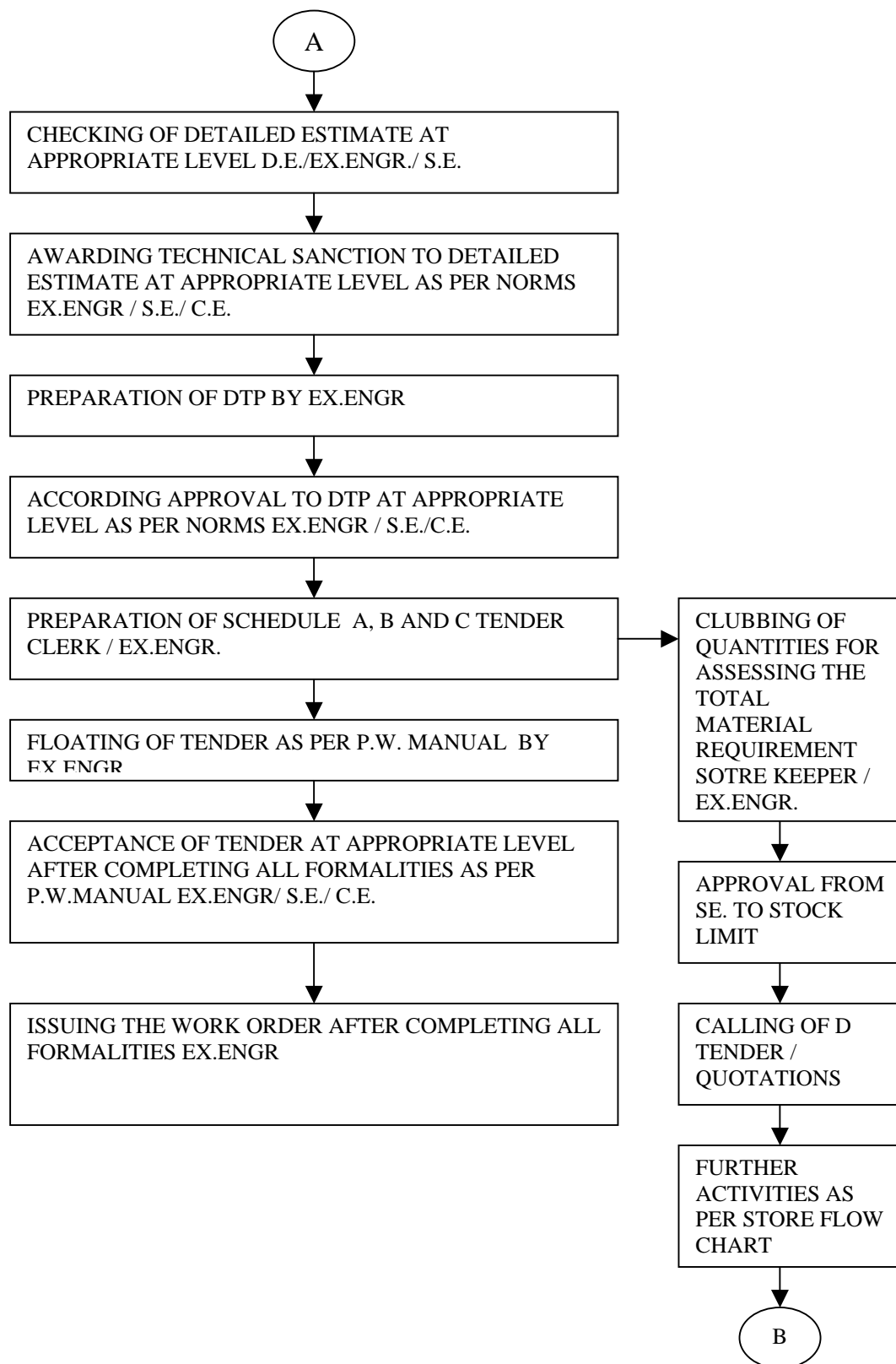


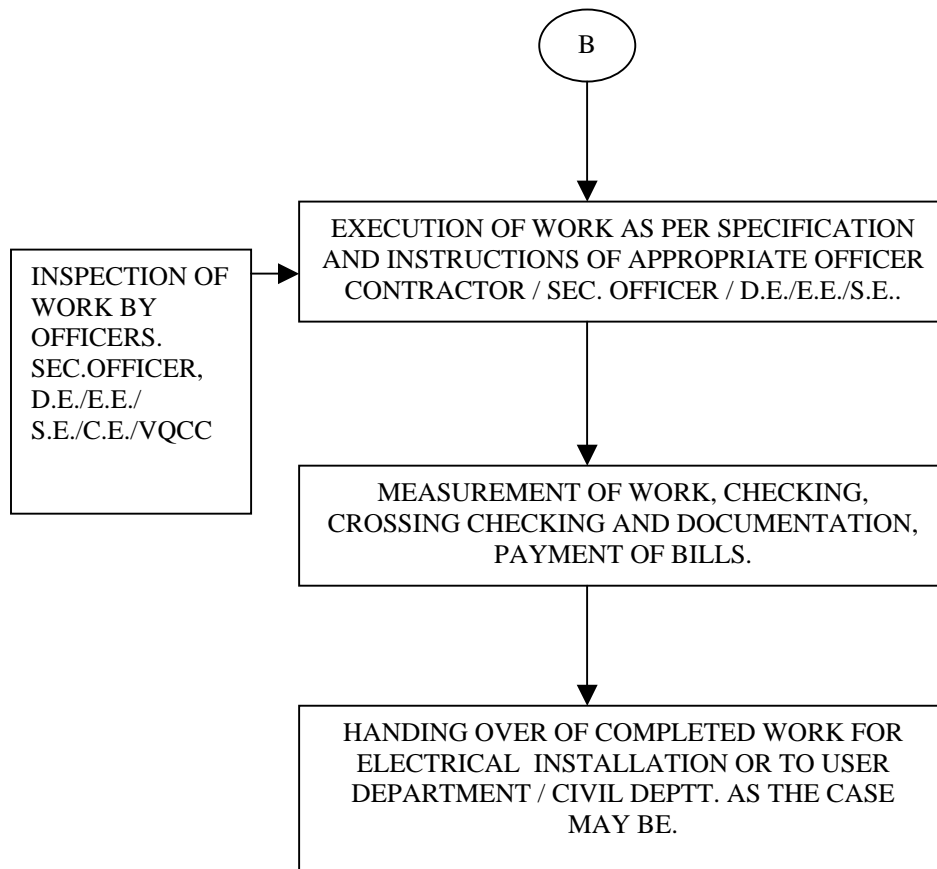


ANNEXURE - II

Flow Chart for works pertaining to other departments







RIGHT TO INFORMATION ACT

MANUAL NO.3

PROCEDURES FOLLOWED

IN DECISION MAKING PROCESS

INCLUDING CHANNELS OF SUPERVISION



MARCH 2008

INDEX

<i>No.</i>	<i>Subject</i>	<i>Page No</i>
<i>1</i>	<i>Activities of P.W.D. Construction of roads, bridges & buildings</i>	<i>1-8</i>
<i>2</i>	<i>Activities of P.W.D. Maintenance of roads, bridges & buildings</i>	<i>9-12</i>
<i>3</i>	<i>Accounts & Store</i>	<i>13-14</i>
<i>4</i>	<i>Manufacturing</i>	<i>15</i>
<i>5</i>	<i>Budget</i>	<i>16</i>
<i>6</i>	<i>Control on Expenditure</i>	<i>17</i>
<i>7</i>	<i>Reporting</i>	<i>18</i>
<i>8</i>	<i>Audit</i>	<i>19</i>
<i>9</i>	<i>Electrical Wing</i>	<i>20</i>
<i>10</i>	<i>Mechanical Wing</i>	<i>21</i>
<i>11</i>	<i>Parks & Garden</i>	<i>22-23</i>
<i>12</i>	<i>Designs Wing</i>	<i>24-25</i>
<i>13</i>	<i>Architectural Wing</i>	<i>26</i>
<i>14</i>	<i>Other Functions of P.W.D.</i>	<i>27-32</i>
<i>15</i>	<i>Annexures I & II</i>	<i>33</i>