

ILLUSTRATIONS



Shaheed Smarak at Sainik Rest House, Jhajjar



Memorial of Brave Soldiers at Dighal



Old Piau at Dighal



Group of Tombs, Jhajjar



Bua Wala Talab near Group of Tombs, Jhajjar



Baag Wali Kothi of Nawab, Dujana



**Palace of Abd-ur-Rehman Khan; the last Nawab of Dujana, at
Chhuchhakwas**



**As per the stone inscription in its stairs, this large pucca tank was got built in 1855 by
the Nawab Abd-ur-Rehman Khan behind the Chhuchhakwas Palace**



A.V.Upper Middle School, Dujana founded in 1929



A wall in the school narrating briefly the history of the then Dujana State



Remnants of the Dargoo Wallah Well, Dujana



Lal Masjid, Dujana



Mata Gate, Jhajjar



Shri Baba Prasad Giri Temple, Jhajjar

Artefacts excavated from Mohanbari archaeological site



**An idol of Lord Vishnu and Brahma
as adored in village temple**

A large earthen granary



Display at Museum of the Gurukul, Jhajjar



Bhimeshwari Devi Temple, Beri



People taking bath and performing rituals at the temple pond in Beri



Devi Temple, Patoda



Jatela Dham, Majra-Dubaldhan



Equines at display in animal fair at Beri, Jhajjar



Sellers displaying skills of their horses at animal fair, Beri



Members of Durga Shakti Rapid Action Force interacting with female commuters at a Bus Stand in Jhajjar district



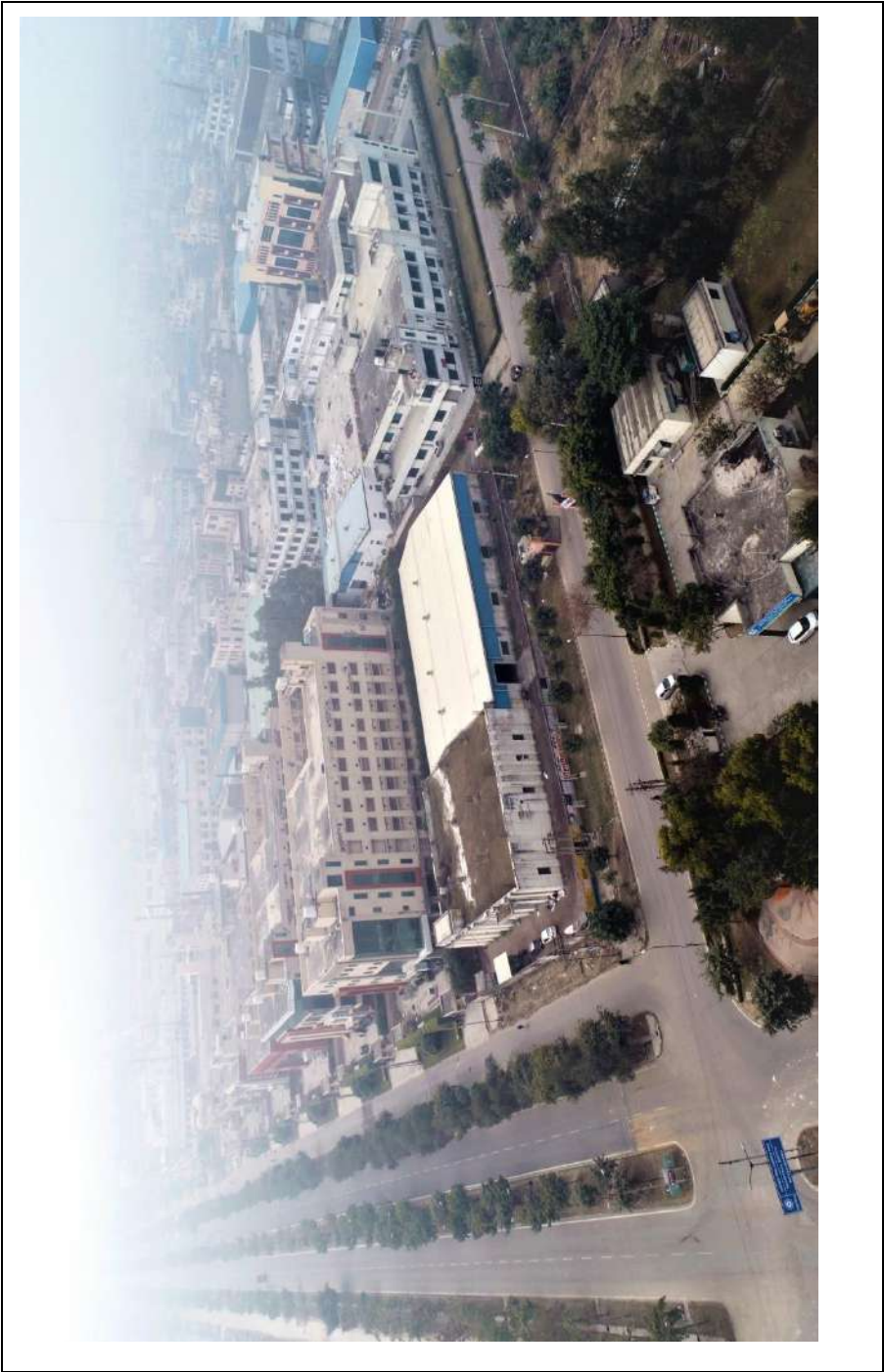
People performing yogic exercises on occasion of International Yoga Day (June 21, 2019) at Bahadurgarh



Spectators enjoying traditional folk dance in a road-show at Bahadurgarh



Spectators watching a cultural event in a school at Khatiwas



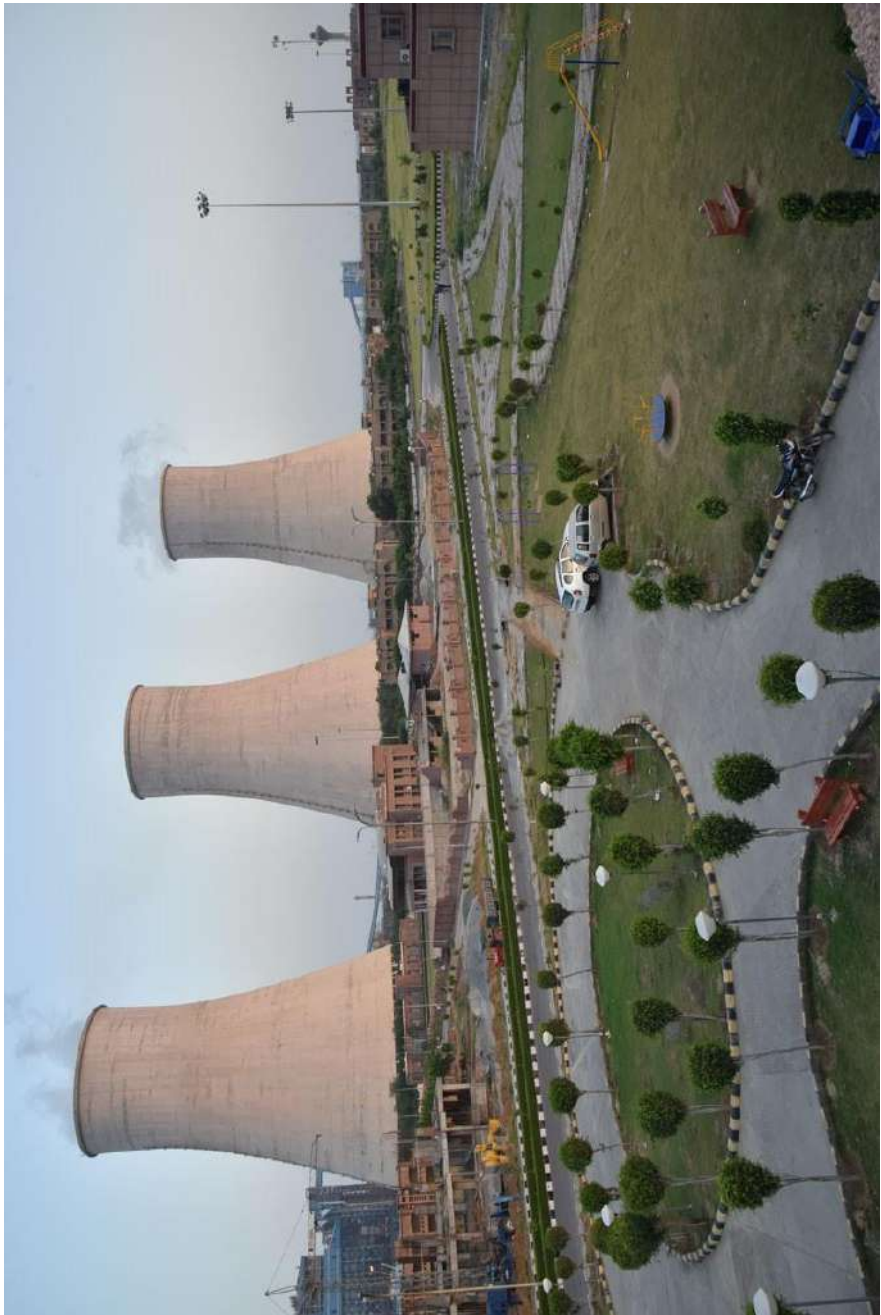
A bird's-eye view of the Industrial Estate, Bahadurgarh



Some prominent Industrial Establishments at Bahadurgarh, Jhajjar :
A - Footwear Park, B - Relaxo Footwear, C - Neolite Industries, D - Surya Industries



Bahadurgarh Terminal of Hindustan Petroleum Corporation Limited near village Asaudah



Indira Gandhi Super Thermal Power Station, Jharli



JF2 - The biggest Lifting Pump House of the State at Salhawas, Jhajjar



Working model installed to explain the cumulative lift of 464.04 feet under lift irrigation project and showing the related canal network of Jhajjar Water Services Circle at JF2, Salhawas



Government Industrial Training Institute, Khuddan



Government Industrial Training Institute, Gudha



Government Post Graduate Nehru College, Jhajjar



The Gurukul, Jhajjar



Civil Hospital, Jhajjar



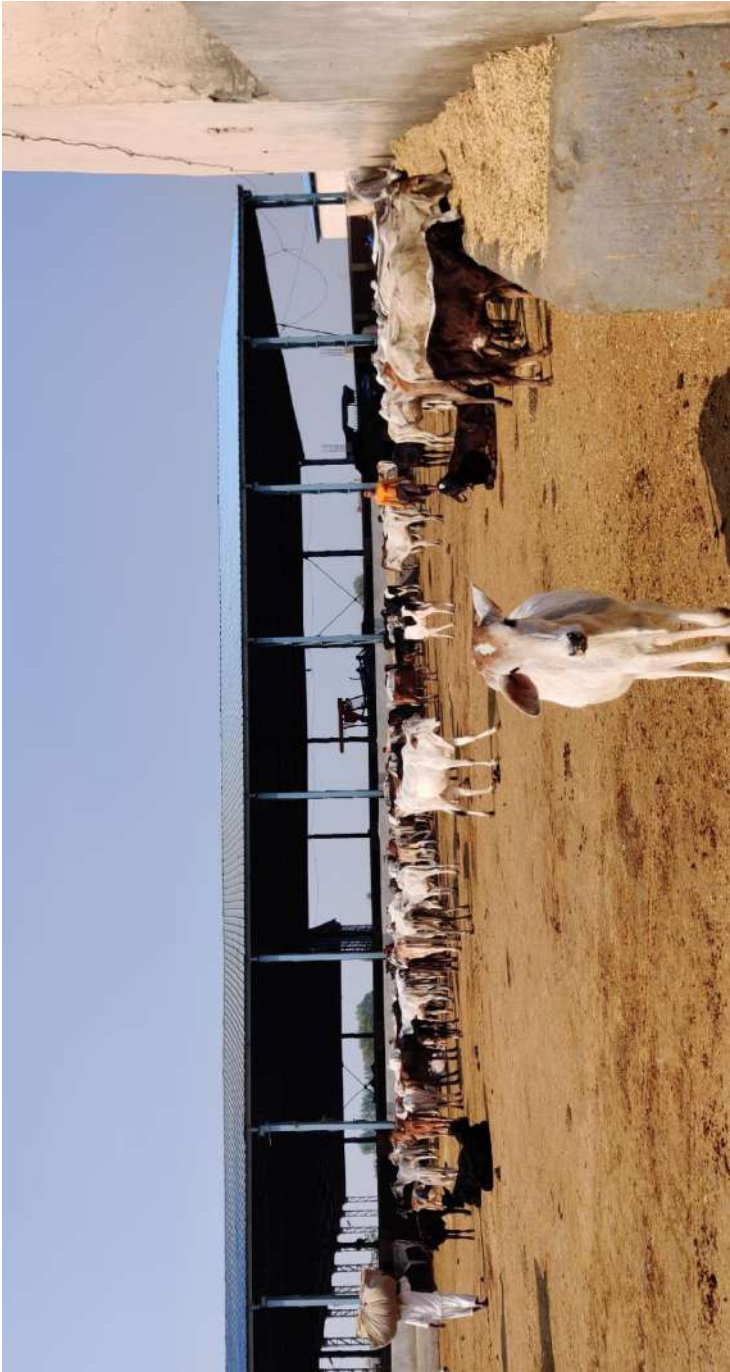
AYUSH Dispensary at Devi Temple, Patoda



All India Institute of Medical Sciences near village Badsa, Jhajjar



Fields showing mustard in blossom and young wheat crops in Jhajjar district



Shri Krishan Gaushala at Dighal, Jhajjar



Workers arranging fodder at the Aryavrat Goshala, Mandothi.



Metrorail passing the Gauriyya Tourist Complex near Brig. Hoshiar Singh Metro Station, Bahadurgarh



A Goods Train passing the Railway Station at Jhajjar



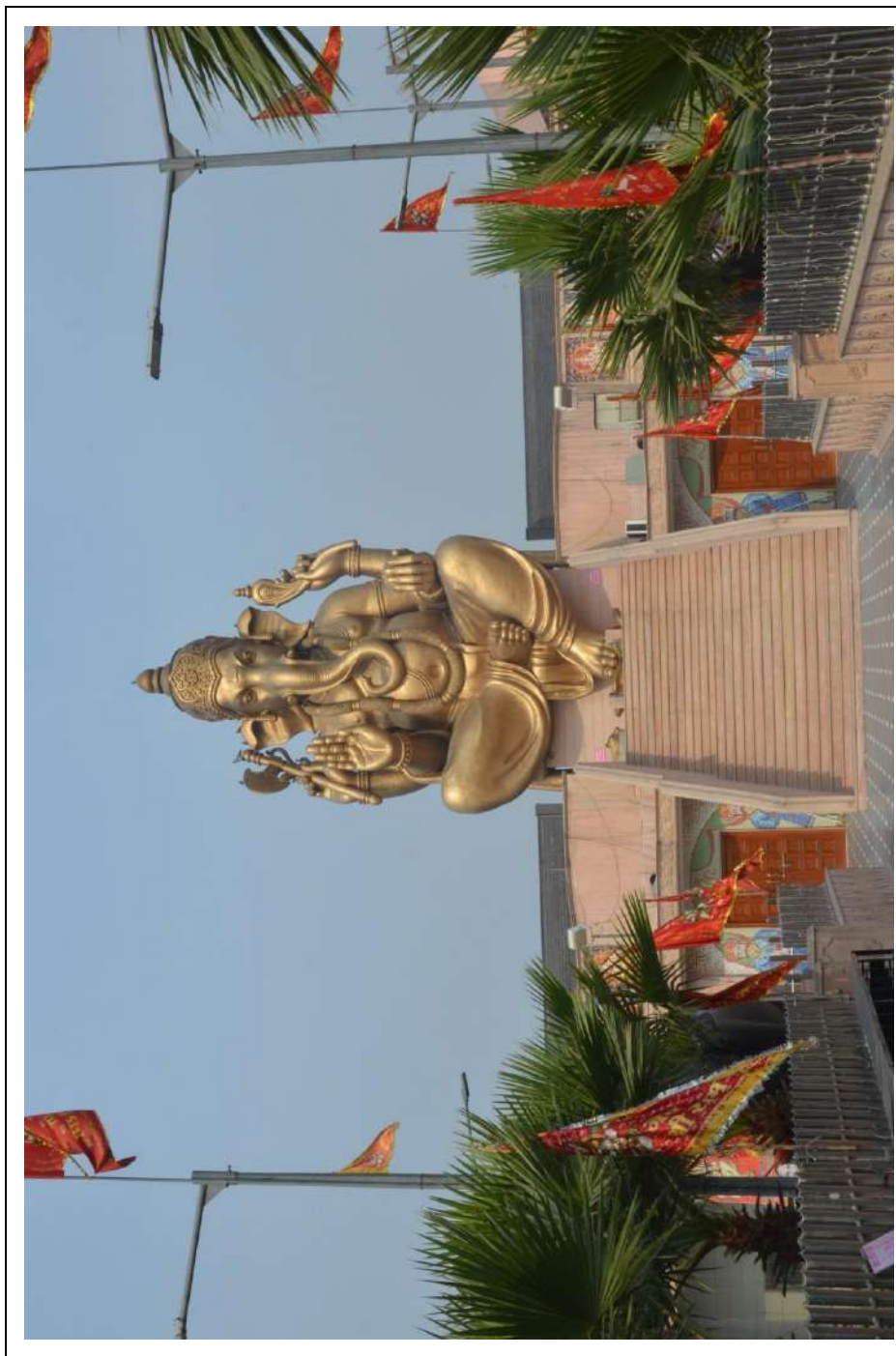
Section of Kundali Manesar Expressway traversing the district near Badli



Kundali Manesar Expressway entry exit floral near Bahadurgarh Terminal of HPCL



An inner view of Gauriyya Tourist Complex, Bahadurgarh



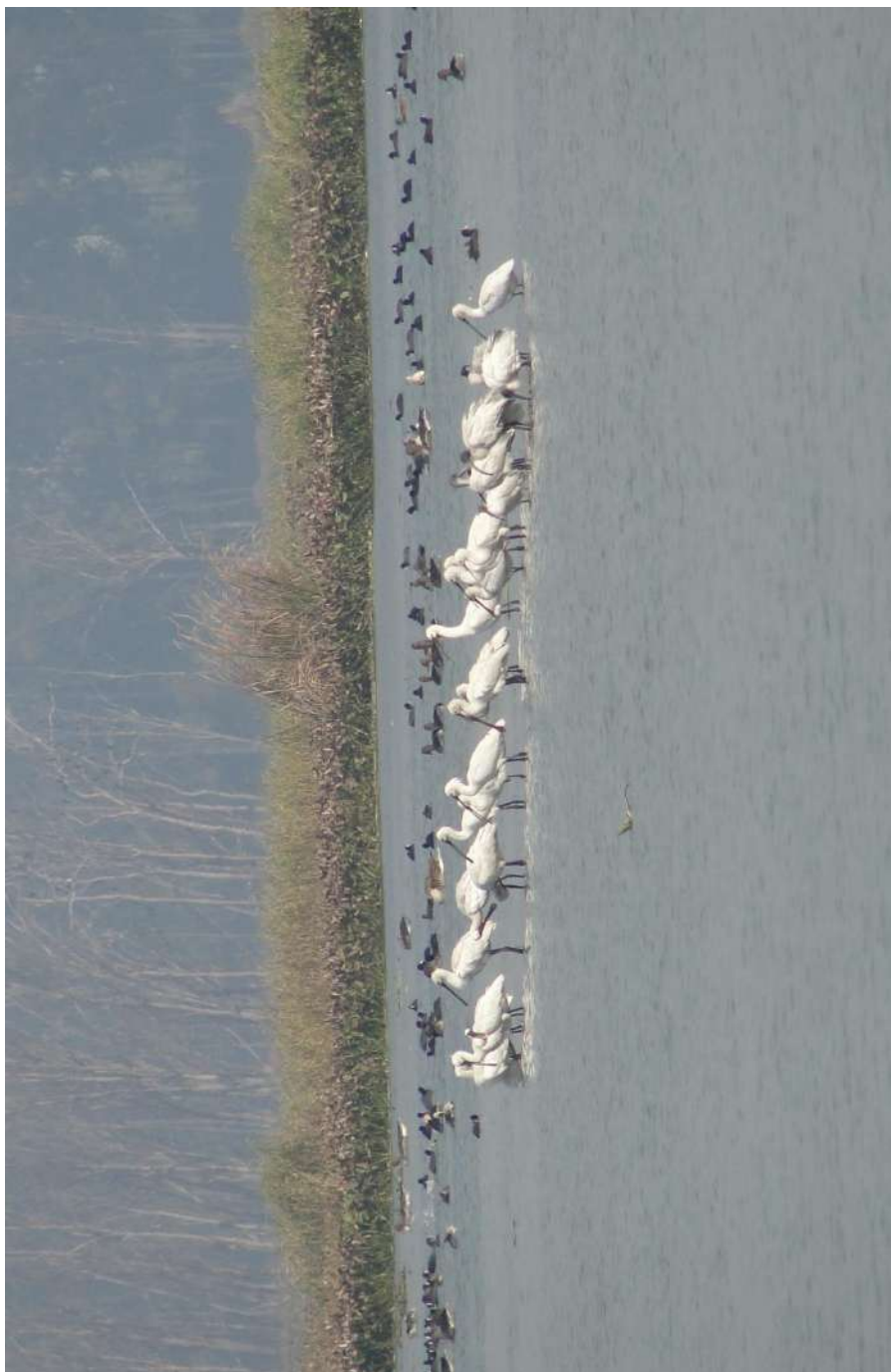
Ganesh Dham, Bahadurgarh



A Sapera (snake-charmer) family in Khetawas, Jhajjar



Group of birdwatchers gazing at birds in the Bhindawas Wildlife Sanctuary



Migratory and local water birds at the Bhindawas Wildlife Sanctuary



Mini Secretariat, Jhajjar



Judicial Complex, Jhajjar



General Bus Stand, Jhajjar