



A Mauryan stupa at Chaneti



A stone slab bearing an inscription (in Brahmi) 7th, 8th century  
A. D., Kapal Mochan



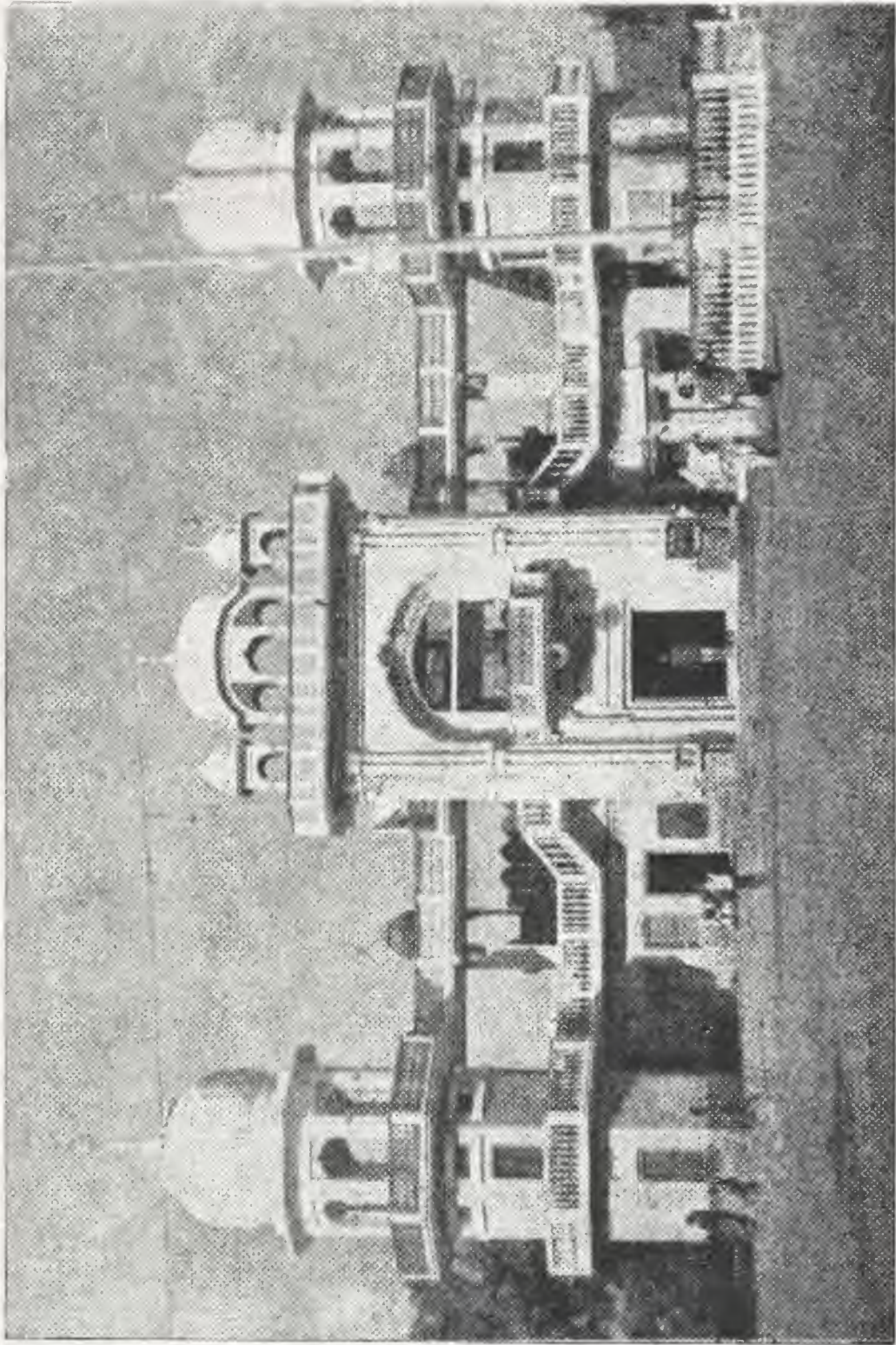
Gaja-Lakshmi, Kapal Mochan



Stone sculpture, Bhima Devi temple, Pinjore



Wall painting      nsa Devi temple



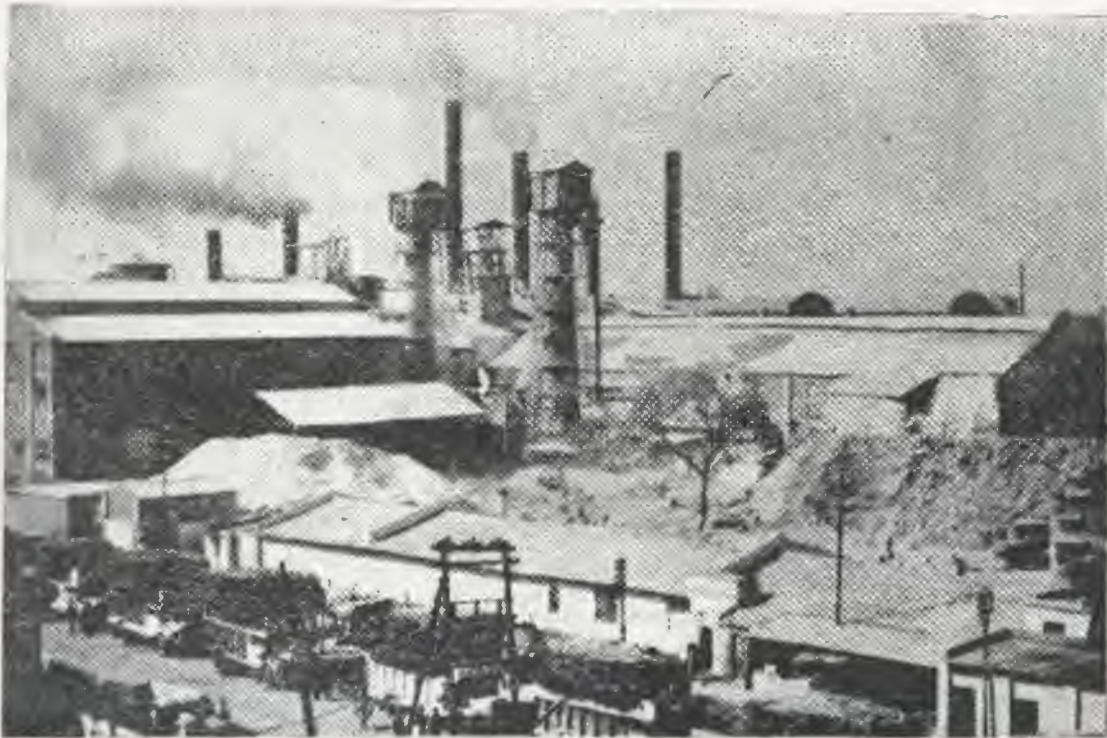
Manji Sahib Gurdwara, Ambala City



Garrison Church—ruined in Indo-Pak War 1965, Ambala Cantonment

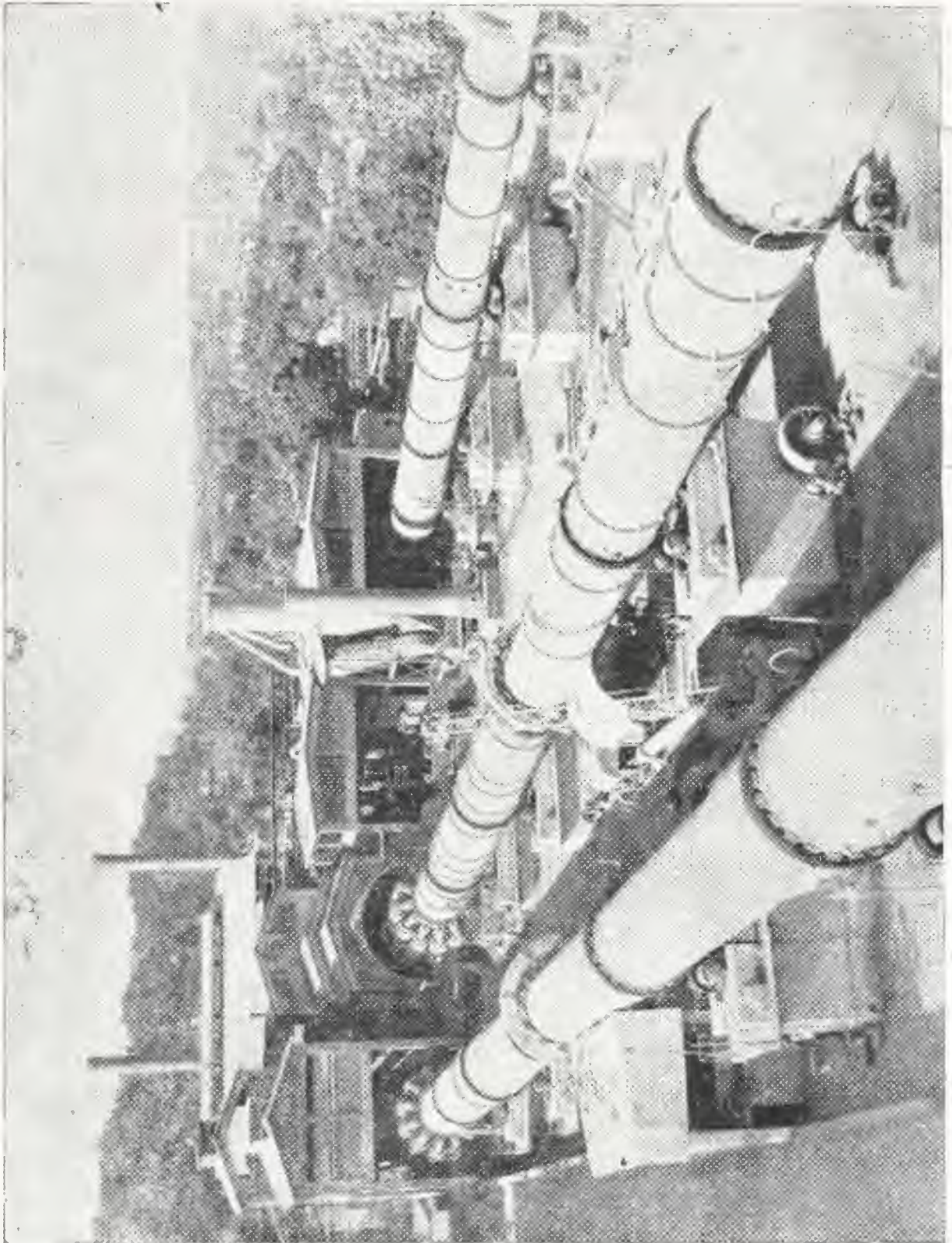


Utensil-making at Jagadhri



Sarswati Sugar Mills, Yamunanagar





**Bhupindra Cement Works, Surajpur**



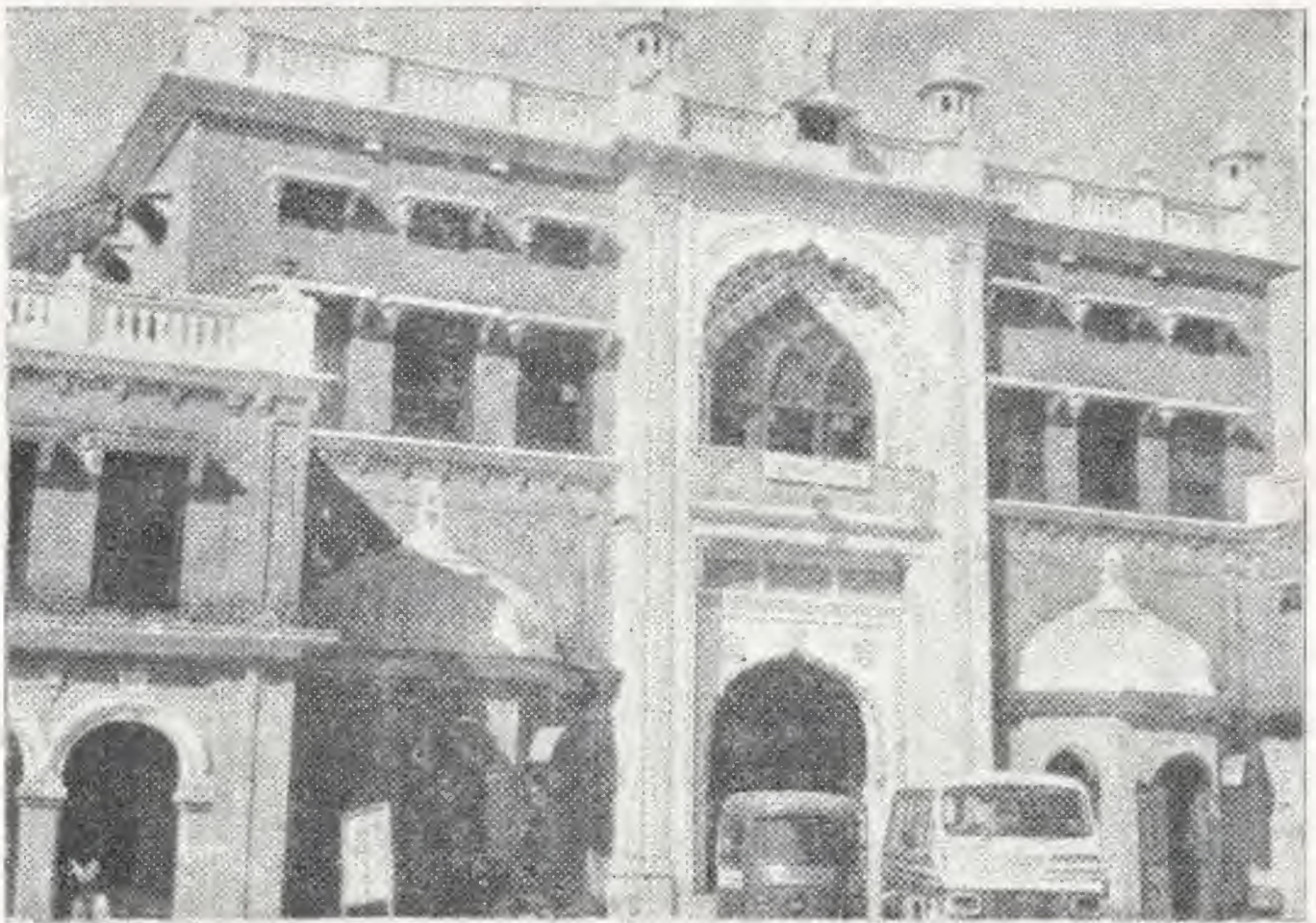
Bus Stand, Ambala Cantonment



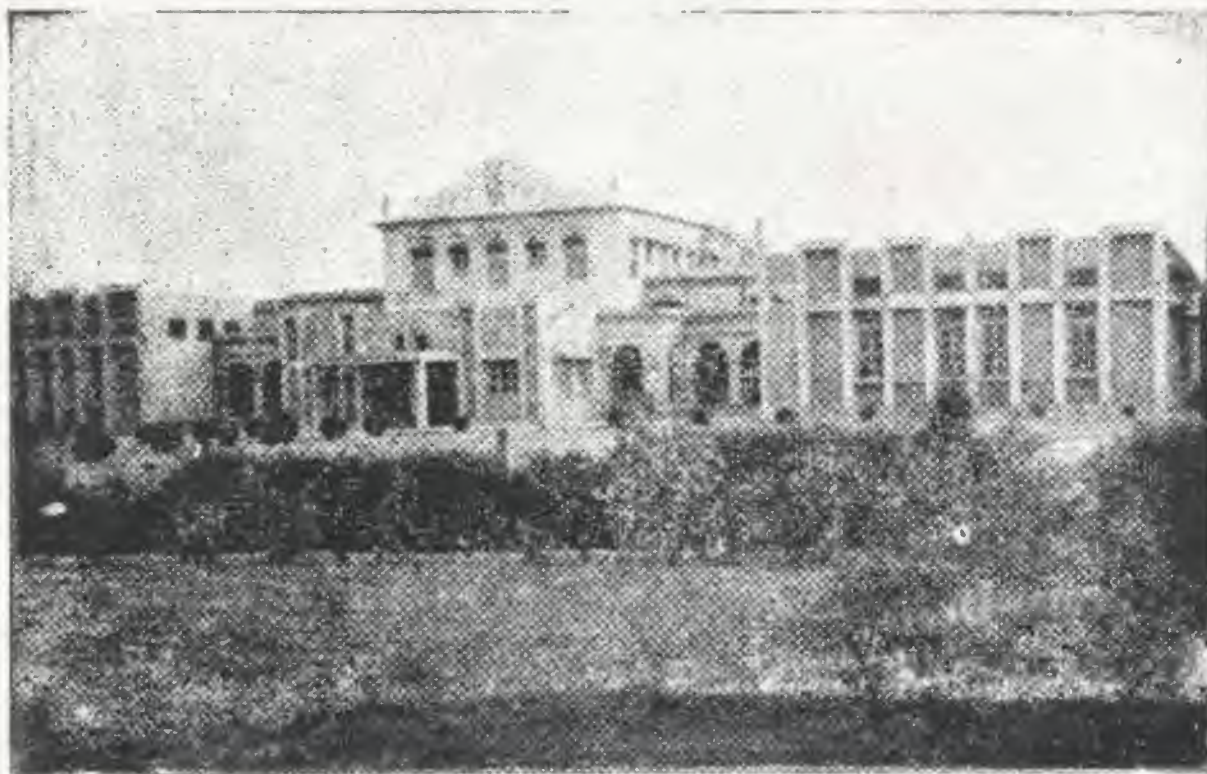
Youth Hostel, Panchkula



P. W. D. Rest House, Morni Hills



**Jainendra Gurukul (High School), Panchkula**



S. A. Jain College, Ambala City



**Saket-hospital-cum-home for orthopaedically handicapped children,  
Chandi Mandir**

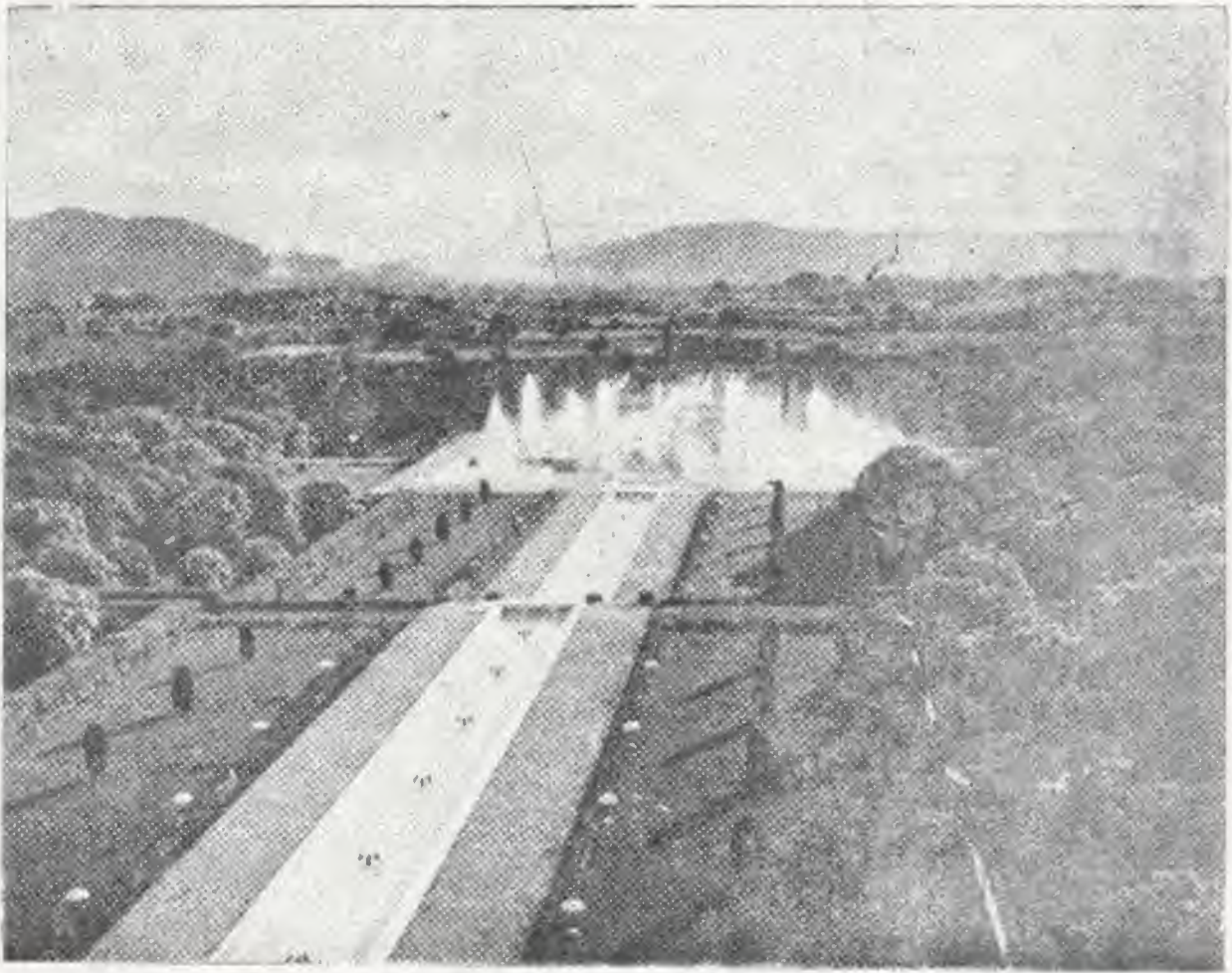


**Mahavira Municipal Park, Ambala City**



Yadvindra Garden, Pinjore





**A Panormic view of Jal Mahal, Yadindra Garden, Pinjore**