

S.No.	Functionality	Current Status	Future plan	Timeline
1.	Total number and Percentage of SROs covered	Total No: 77, Percentage: 100		
2.	From which year is digitized legacy data available & the backlog, if any	Backlog entry from around 2005-2017 for various SROs. Legacy data which are scanned and indexed are searchable.	To complete the scanning remaining legacy deeds, process for digitization has been chalked out.	Feb-2025
3.	Availability of search facility of document based on Name, Property details like survey number, deed number, etc.	Available		
4.	Search facility of legacy data available to SRO and/or citizens	Available to SRO		
5.	Percentage of Aadhar seeding in the RoR & Cadastral map by LR Dept and its availability to SRO			

S.No.	Functionality	Current Status
1.	Online facility for booking appointment slot for registration	Available
2.	Pre-registration search facility about the RoR, Cadastral map etc for citizens	Under Process
3.	KYC systems in operation: a. Aadhar linkage b. Aadhar authentication c. Any other document/lcards allowed	eKYC using Aadhaar/ PAN
4.	Requirements & functions of Notary public, witnesses and Gazetted officer in registration process	2 witness required
5.	Dynamic deed templates availability	Not available
6.	Whether anywhere registration is allowed in the state	Under jurisdiction of Sub-Registrar offices

S.No.	Functionality	Current Status
1.	Circle Rates/ Ready Reckoner Rates/ Guideline values / Collector Rates for lands: Availability online	Available online
2.	E-Calculator (Online Stamp duty calculator) availability to compute fees	Available
3.	Online payment facility for application fee - Stamp duty, registration fees, etc.	Available
4.	Whether citizens are capable to purchase stamps online?	Can be purchased in SHCIL website upto Rs.500/-.
5.	Integrated e-stamping facility availability in the software itself	Integrated

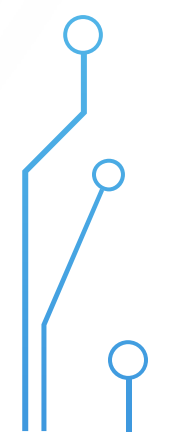
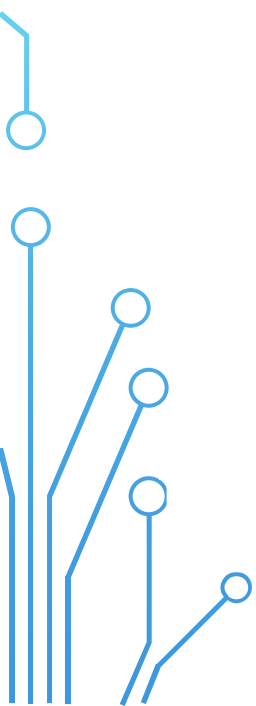
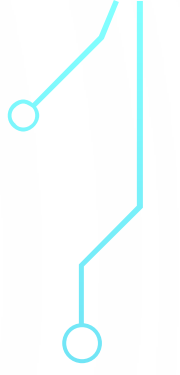
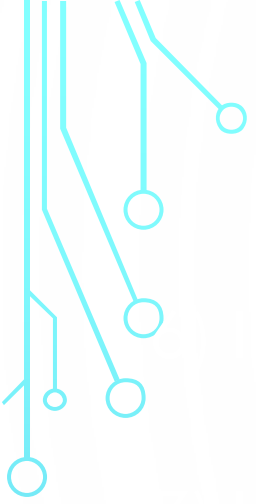
S.No.	Functionality	Current Status
1.	Percentage of SROs integrated with Revenue Offices and Land Record database and its embedded nature	The location details are fetched from Land Record database
2.	Whether SRO and/or citizen can check litigations online for a property scheduled for registration	Not available
3.	Does every registration of land, plot, apartment trigger a corresponding digital mutation in the RoR	Only registration of land under Sale article triggers digital mutation
4.	Is party/ owner names and area details checked from Land Records (RoR) before registration	Yes

INTEGRATION WITH OTHER SYSTEMS

S.No.	Functionality	Current Status
5.	Is past registration data available for checking & validation by SRO	Yes
6.	Whether separate DLC rate are available for flats/ apartments	Available
7.	Whether system are integrated for registration of agreements vis a vis final deed / sale registration.	Not available
8.	Whether sale of Govt Land is blocked/ red-flagged	Yes
9.	System integration with Authority/TCP approval and with the ULBs	Yes, with APDCL and RERA

S.No.	Functionality	Current Status
1.	Whether (AI Nibhrit) solution is available for masking personal information of PAN, Aadhaar number and fingerprint impressions on registered pdf deeds	Under process
2.	Whether circle / guideline locations map georeferenced are available on GIS platforms?	Not available
3.	Whether BI based dashboards available for decision support?	Not available
4.	Whether circle rate/ guideline rates can be checked by selecting area of interest from the map or mobile app ?	Not available
5.	Whether Block chain technology is being utilized.	Done in PoC





The image features decorative blue circuit-like lines in the corners, consisting of straight lines and small circles. A vertical blue line is positioned on the right side of the page.

dlrs-igr@assam.gov.in

0361-2452854