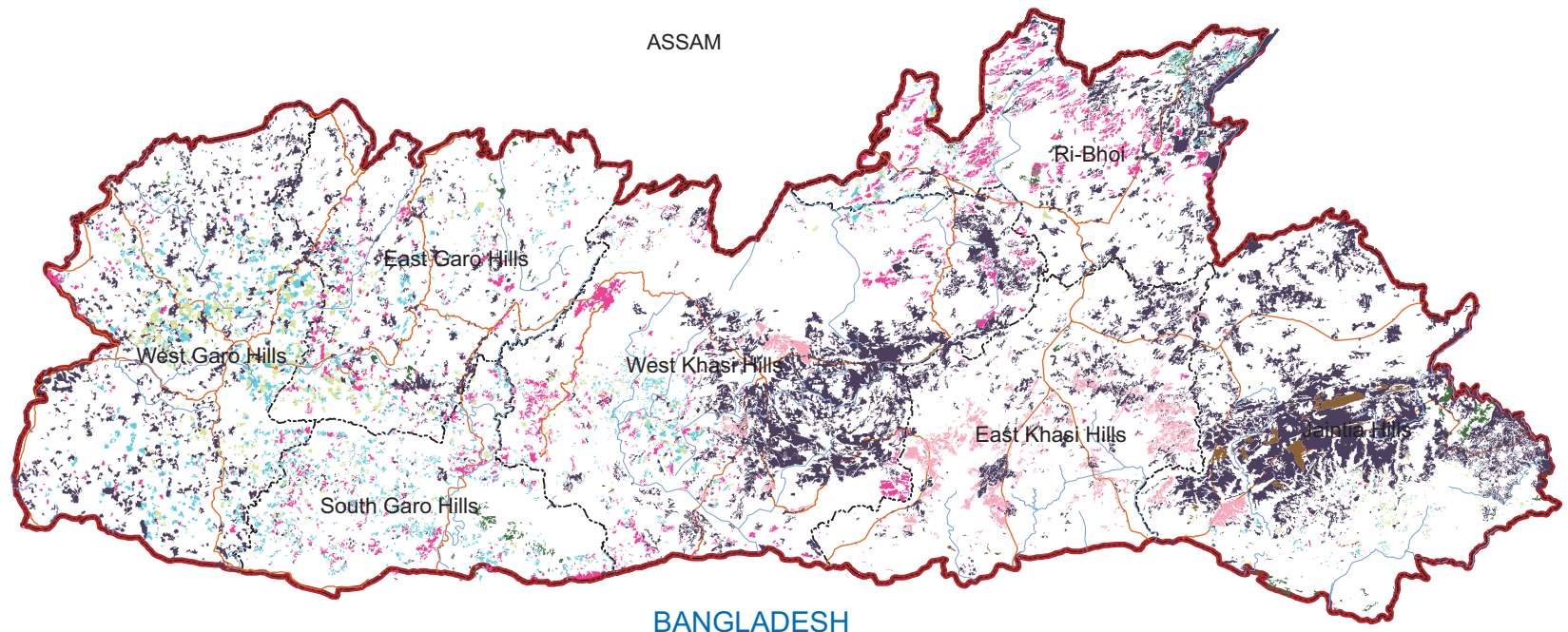
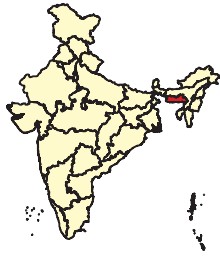


Salient Features

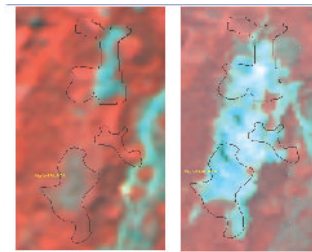
- A net increase of Wastelands by 59.33 sq. km. is observed during this period.
- Maximum decrease is observed in **land with dense scrub** by 58.52 sq. km.; followed by **land with open scrub** by 35.93 sq. km.;
- Maximum increase is observed in **shifting cultivation-abandoned Jhum** by 147.27 sq. km.
- **Mining wastelands** area witnessed increase of 53.86 sq. km.
- 41.88 sq. km. of wastelands area converted into forest which has come from **land with open and dense scrub** category.; whereas 21.94 sq. km. is brought under built up during this period,.
- In Rhibhoi district, wastelands area decreased by 0.95 sq. km.; **land with open scrub** has decreased by 31.61 sq. km.; **shifting cultivation-current Jhum** decreased by 26.71 sq. km.
- East Khasi Hills district witnessed decrease in area under wastelands from 387.16 sq. km. to 386.34 sq. km. **Barren rocky** area decreased by 2.26 sq. km.
- West Khasi Hills district witnessed increase in wastelands area by 18.50 sq. km. this is mainly due to **land with open scrub** which has increased by 82.10 sq. km.
- In West Garo Hills district, wastelands area increased by 16.86 sq. km. and **shifting cultivation – abandoned Jhum** increased by 44.56 sq. km.

MEGHALAYA Spatial Distribution of Wastelands 2015-16

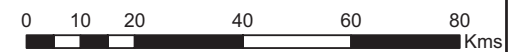
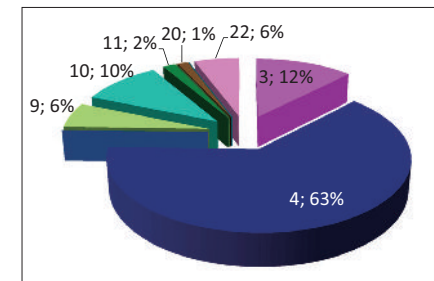


Legend

- Gullied and/ or ravinous land (Medium)
- Gullied and/ or ravinous land (Deep)
- Land with Dense Scrub
- Land with Open Scrub
- Waterlogged and Marshy land (Permanent)
- Waterlogged and Marshy land (Seasonal)
- Land Affected by salinity / alkalinity (Moderate)
- Land Affected by salinity / alkalinity (Strong)
- Shifting Cultivation - Current Jhum
- Shifting Cultivation - Abandoned Jhum
- Under-utilised/degraded forest (Scrub domin)
- Under-utilised/degraded forest (Agriculture)
- Degraded pastures/grazing land
- Degraded land under plantation crop
- Sands - Riverine
- Sands - Coastal
- Sands - Desertic
- Sands - Semi Stab:- Stab > 40m
- Sands - Semi Stab:- Stab 15-40m
- Mining Wastelands
- Industrial Wastelands
- Barren Rocky Area
- Snow Covered/ Glacial Area
- Non Wasteland Area
- Water ways
- District Boundary
- Railways
- Major Roads



Lat: 25°12'38.163"N Long: 92°21'8.602"E
Dist: Jaintia, Meghalaya
08-09: Dense Scrub; 15-16: Industry



Partner Inst.
North East Space Application Centre
Dept. of Space, Govt. of India
Umiam
Meghalaya-793103

Executed By
Land Use & Cover Monitoring Divn.
LRUMG, Remote Sensing Application
National Remote Sensing Centre
ISRO, Dept. of Space, GOI
Balanagar, Hyderabad - 500037

Sponsored by
Dept. of Land Resources
Min. of Rural Development
G - Wing, Nirman Bhawan
GOI, New Delhi - 110 011

Total Geog. Area (TGA): 22429.00 sq. km.
Total wasteland area : 4135.77 sq. km.
Wasteland Percentage: 18.44

Source: Wasteland Maps: 2008-09 on 1:50,000 scale,
Three seasons IRS P6 LISS-III data of Kharif (Oct/Nov-2015),
Rabi (Jan/Feb-2016) and Zaid (April/May-2016) & Ground truth

MEGHALAYA
Wastelands Area Change Matrix : 2008-09 and 2015-16

Area in Sq.km

WL Categories	WL during 2008-09 remaining as WL in 2015-16										WL 2008-09 becoming non_WL in 2015-16					2008-09		
	3	4	6	9	10	11	15	20	22	24	25	26	27	28	29	Category Total	Grand Total	
3	418.91	123.39		8.32						0.62		3.46	0.33	0.13	13.34	568.50	4076.43	
4	91.08	2458.08		3.80			50.38	1.44	18.28	2.62	6.44	1.51	0.41	14.09	2648.12			
6			0.01												0.01			
9		1.43		98.80	178.68									2.82	281.73			
10		0.36		24.15	241.94			0.26			0.54			8.16	275.42			
11				0.07		64.61			0.19					3.46	68.32			
12															0.00			
15							0.15								0.15			
20							0.63								0.63			
22								230.64	2.86	0.04					233.55			
999		28.93		102.74	2.06		3.48	1.44										
Category Total (2015-16)	509.98	2612.19	0.01	237.87	422.68	64.61	0.15	54.49	233.78	21.94	2.67	10.44	1.84	0.54	41.88			
Grand Total (2015-16)	4135.77																	

WL Category	Reduction from 0809 to 1516		Increase from 0809 to 1516	
	Area	No of polygons	Area	No of polygons
3	17.88	67		
4	43.35	118	28.93	83
6				
9	2.82	21	102.74	662
10	8.70	51	2.06	5
11	3.65	17		
12				
15				
20			3.48	18
22	2.90	11	1.44	14
Total	79.31	285	138.65	782

Wastelands becoming Non-wastelands (-) **79.31**
 Non-wastelands becoming Wastelands (+) **138.65**
 NET Change (2015 - 16)- (2008 - 09) (+) **59.33**

Green denotes Change from wasteland to non-wasteland
Red denotes change from non-wasteland to wastelands
Blue denotes no change in the wasteland category
 2008 - 09 Wastelands statistics are revised version.
 Area under category total is rounded to nearest decimal.

Wasteland Classes				Non-Wasteland Classes																												
1. Gullied and/ or ravinous land (Medium)	2. Gullied and/ or ravinous land (Deep)	3. Land with Dense Scrub	4. Land with Open Scrub	5. Waterlogged and Marshy land (Permanent)	6. Waterlogged and Marshy land (Seasonal)	7. Land affected by salinity/alkalinity (Medium)	8. Land affected by salinity/alkalinity (Strong)	9. Shifting Cultivation - Current Jhum	10. Shifting Cultivation - Abandoned Jhum	11. Under-utilised/degraded forest (Scrub domin)	12. Under-utilised/degraded forest (Agriculture)	13. Degraded pastures/ grazing land	14. Degraded land under plantation crop	15. Sands-Riverine	16. Sands-Coastal	17. Sands-Desertic	18. Sands-Semi Stab.-Stab>40m	19. Sands-Semi Stab.-Stab 15-40m	20. Mining Wastelands	21. Industrial wastelands	22. Barren Rocky/Stony waste	23. Snow covered /Glacial area	999. Non-Wasteland Area	24. Built-up	25. Industrial Area	26. Cropland	27. Fallow Land	28. Plantation	29. Forest-Dense/Open	30. Forest Plantation	31. Grasslands	32. Waterbodies

Meghalaya

Wastelands Area Changes – 2008-09 and 2015-16

District	WL_Class	1	2	3	4	5	6	7	8	9	10	11
East Garo Hills	2008-09	--	--	65.89	159.02	--	0.01	--	--	24.38	39.76	7.67
	2015-16	--	--	63.22	151.10	--	0.01	--	--	34.56	51.24	7.67
	Change	--	--	-2.67	-7.91	--	0.00	--	--	10.18	11.48	0.00
East Khasi Hills	2008-09	--	--	6.94	213.18	--	--	--	--	--	--	2.10
	2015-16	--	--	7.76	213.16	--	--	--	--	0.12	--	2.08
	Change	--	--	0.83	-0.02	--	--	--	--	0.12	--	-0.02
Jaintia Hills	2008-09	--	--	0.18	917.65	--	--	--	--	13.71	0.09	29.41
	2015-16	--	--	3.71	866.61	--	--	--	--	13.95	9.82	27.20
	Change	--	--	3.52	-51.04	--	--	--	--	0.25	9.72	-2.21
Ri-Bhoi	2008-09	--	--	146.23	291.23	--	--	--	--	50.93	9.29	12.16
	2015-16	--	--	166.18	259.62	--	--	--	--	24.21	46.84	12.03
	Change	--	--	19.94	-31.61	--	--	--	--	-26.71	37.56	-0.12
South Garo Hills	2008-09	--	--	69.94	24.53	--	--	--	--	36.88	71.79	15.00
	2015-16	--	--	68.88	23.18	--	--	--	--	18.23	94.52	13.67
	Change	--	--	-1.06	-1.35	--	--	--	--	-18.65	22.74	-1.33
West Garo Hills	2008-09	--	--	25.25	393.34	--	--	--	--	127.88	124.04	1.96
	2015-16	--	--	39.19	367.25	--	--	--	--	112.07	168.61	1.96
	Change	--	--	13.94	-26.09	--	--	--	--	-15.81	44.56	0.00
West Khasi Hills	2008-09	--	--	254.07	649.18	--	--	--	--	27.97	30.44	0.02
	2015-16	--	--	161.04	731.27	--	--	--	--	34.73	51.65	--
	Change	--	--	-93.03	82.10	--	--	--	--	6.76	21.21	-0.02
Grand Total	2008-09	--	--	568.50	2648.12	--	0.01	--	--	281.73	275.42	68.32
	2015-16	--	--	509.98	2612.19	--	0.01	--	--	237.87	422.68	64.61
	Change	--	--	-58.52	-35.93	--	0.00	--	--	-43.86	147.27	-3.71

Note: "--" Denotes this Class is not existing in the District / State

2008-09 Wastelands statistics are revised version.

- | | |
|--|--|
| 1. Gullied and/ or ravinous land (Medium) | 7. Land affected by salinity/alkalinity (Medium) |
| 2. Gullied and/ or ravinous land (Deep) | 8. Land affected by salinity/alkalinity (Strong) |
| 3. Land with Dense Scrub | 9. Shifting Cultivation - Current Jhum |
| 4. Land with Open Scrub | 10. Shifting Cultivation - Abandoned Jhum |
| 5. Waterlogged and Marshy land (Permanent) | 11. Under-utilised/degraded forest (Scrub domin) |
| 6. Waterlogged and Marshy land (Seasonal) | 12. Under-utilised/degraded forest (Agriculture) |

Area in sq.km

12	13	14	15	16	17	18	19	20	21	22	23	Total	TGA
--	--	--	--	--	--	--	--	--	--	--	--	296.71	2603
--	--	--	--	--	--	--	--	--	--	--	--	307.79	
--	--	--	--	--	--	--	--	--	--	--	--	11.08	
--	--	--	0.15	--	--	--	--	0.63	--	164.15	--	387.16	2748
--	--	--	0.15	--	--	--	--	1.17	--	161.89	--	386.34	
--	--	--	0.00	--	--	--	--	0.54	--	-2.26	--	-0.82	
--	--	--	--	--	--	--	--	--	--	26.65	--	987.69	3819
--	--	--	--	--	--	--	--	52.73	--	27.99	--	1002.01	
--	--	--	--	--	--	--	--	52.73	--	1.34	--	14.31	
0.00	--	--	--	--	--	--	--	--	--	--	--	509.83	2448
0.00	--	--	--	--	--	--	--	--	--	--	--	508.88	
0.00	--	--	--	--	--	--	--	--	--	--	--	-0.95	
--	--	--	--	--	--	--	--	--	--	0.32	--	218.46	1850
--	--	--	--	--	--	--	--	--	--	0.32	--	218.81	
--	--	--	--	--	--	--	--	--	--	0.00	--	0.35	
--	--	--	--	--	--	--	--	--	--	--	--	672.48	3714
--	--	--	--	--	--	--	--	--	--	0.26	--	689.34	
--	--	--	--	--	--	--	--	--	--	0.26	--	16.86	
--	--	--	--	--	--	--	--	--	--	42.43	--	1004.10	5247
--	--	--	--	--	--	--	--	0.59	--	43.33	--	1022.60	
--	--	--	--	--	--	--	--	0.59	--	0.90	--	18.50	
0.00	--	--	0.15	--	--	--	--	0.63	--	233.55	--	4076.43	22429
0.00	--	--	0.15	--	--	--	--	54.49	--	233.78	--	4135.77	
0.00	--	--	0.00	--	--	--	--	53.86	--	0.24	--	59.33	

TGA - Total Geographical Area

13. Degraded pastures/ grazing land	19. Sands-Semi Stab.-Stab 15-40m
14. Degraded land under plantation crop	20. Mining Wastelands
15. Sands-Riverine	21. Industrial wastelands
16. Sands-Coastal	22. Barren Rocky/Stony waste
17. Sands-Desertic	23. Snow covered /Glacial area
18. Sands-Semi Stab.-Stab>40m	

