

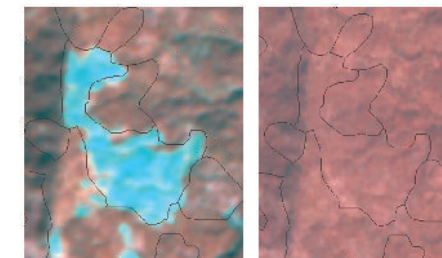
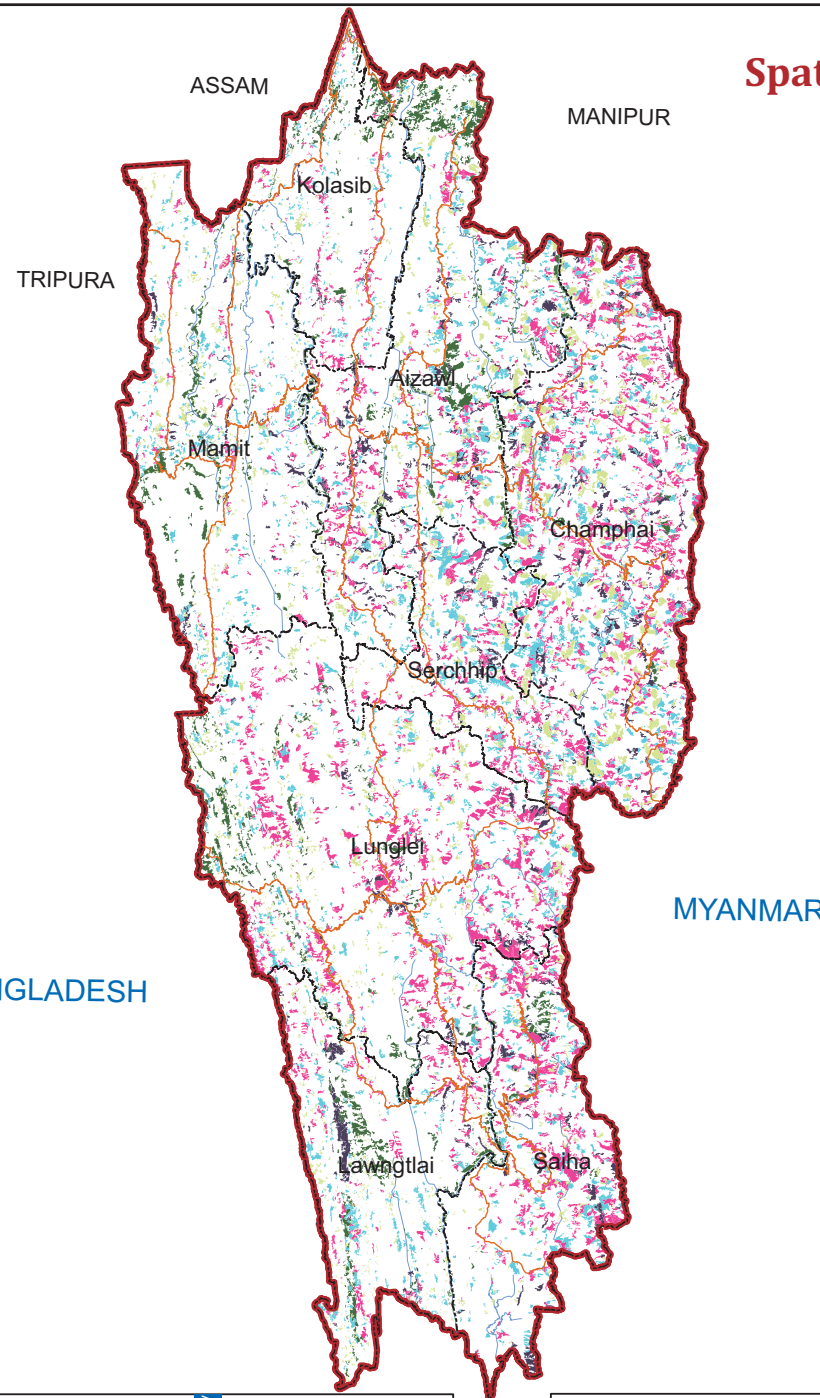
Salient Features

- Decrease of wastelands area by 576.90 sq. km. is observed in the state.
- Reduction of 638.78 sq. km. area under **land with dense scrub**; increase in area under **shifting cultivation-current Jhum** by 89.47 sq. km.
- An area of 1730.11 sq. km. converted into dense forest from **land with dense scrub** and **Shifting Cultivation- abandoned**.
- Maximum decrease of wastelands area is in Mamit district (175.20 sq. km.) and which is mainly contributed by **land with dense scrub** (198.15 sq. km.).
- Saiha district witnessed a reduction under wastelands area by 152.09 sq. km. mainly due to reduction in **land with dense scrub** by 146.36 sq. km.
- Wastelands area is increased by 29.16 sq. km. in Champhai district. **Land with dense scrub** contributed maximum increase of 50.65 sq. km.

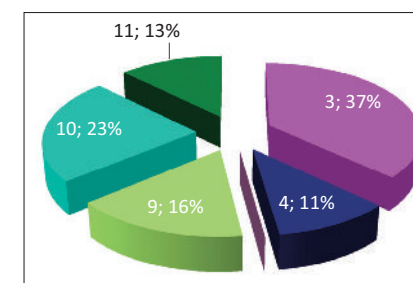


MIZORAM

Spatial Distribution of Wastelands 2015-16



Lat : 23°53'15.77"N Long : 93°22'48.09"E
 District: Champhai
 08-09: Shifting Cultivation;
 15-16: Forest



Legend

- Gullied and/ or ravinous land (Medium)
- Gullied and/ or ravinous land (Deep)
- Land with Dense Scrub
- Land with Open Scrub
- Waterlogged and Marshy land (Permanent)
- Waterlogged and Marshy land (Seasonal)
- Land Affected by salinity / alkalinity (Moderate)
- Land Affected by salinity / alkalinity (Strong)
- Shifting Cultivation - Current Jhum
- Shifting Cultivation - Abandoned Jhum
- Under-utilised/degraded forest (Scrub domin)
- Under-utilised/degraded forest (Agriculture)
- Degraded pastures/grazing land
- Degraded land under plantation crop
- Sands - Riverine
- Sands - Coastal
- Sands - Desertic
- Sands - Semi Stab:- Stab > 40m
- Sands - Semi Stab:- Stab 15-40m
- Mining Wastelands
- Industrial Wastelands
- Barren Rocky Area
- Snow Covered/ Glacial Area
- Non Wasteland Area
- Water ways
- District Boundary
- Railways
- Major Roads

Partner Inst.
 Mizoram Remote Sensing Application Centre (MIRSAC), Science & Technology, Planning Department, Aizawl - 796 012

Executed By
 Land Use & Cover Monitoring Divn. LRUMG, Remote Sensing Application National Remote Sensing Centre ISRO, Dept. of Space, GOI Balanagar, Hyderabad - 500037

Sponsored by
 Dept. of Land Resources Min. of Rural Development G - Wing, Nirman Bhawan GOI, New Delhi - 110 011

Total Geog. Area (TGA): 21081.00 sq. km.
 Total wasteland area : 4300.66 sq. km.
 Wasteland Percentage: 20.40

Source: Wasteland Maps: 2008-09 on 1:50,000 scale, Three seasons IRS P6 LISS-III data of Kharif (Oct/Nov-2015), Rabi (Jan/Feb-2016) and Zaid (April/May-2016) & Ground truth

MIZORAM
Wastelands Area Change Matrix : 2008-09 and 2015-16

Area in Sq.km

WL Categories	WL during 2008-09 remaining as WL in 2015-16					WL 2008-09 becoming non WL in 2015-16	2008-09	
	3	4	9	10	11	29	Category Total	Grand Total
1	1233.26	18.37	91.98	135.46		746.54	2225.61	4877.55
2	47.38	301.85	14.98	10.82		85.76	460.80	
3	54.67	14.80	52.66	185.52		294.43	602.08	
4	166.68	39.98	76.01	152.79		598.83	1034.28	
6			12.41	0.92	536.90	4.55	554.78	
999	84.84	91.88	443.51	525.89	7.10			
Category Total (2015-16)	1586.84	466.88	691.55	1011.39	544.00	1730.11		
Grand Total (2015-16)	4300.66							

WL Category	Reduction from 0809 to 1516		Increase from 0809 to 1516	
	Area	No of polygons	Area	No of polygons
3	746.54	1208	84.84	174
4	85.76	197	91.88	204
9	294.43	1237	443.51	2521
10	598.83	2038	525.89	1440
11	4.55	10	7.10	17
Total	1730.11	4690	1153.22	4356

Wastelands becoming Non-wastelands (-) 1730.11
 Non-wastelands becoming Wastelands (+) 1153.22
 NET Change (2015 - 16) - (2008 - 09) (-) 576.90

Green denotes Change from wasteland to non-wasteland
Red denotes change from non-wasteland to wastelands
Blue denotes no change in the wasteland category
 2008 - 09 Wastelands statistics are revised version.
 Area under category total is rounded to nearest decimal.

Wasteland Classes		Non-Wasteland Classes	
1. Gullied and/ or ravinous land (Medium)	9. Shifting Cultivation - Current Jhum	17. Sands-Desertic	24. Built-up
2. Gullied and/ or ravinous land (Deep)	10. Shifting Cultivation - Abandoned Jhum	18. Sands-Semi Stab.-Stab>40m	25. Industrial Area
3. Land with Dense Scrub	11. Under-utilised/degraded forest (Scrub domin)	19. Sands-Semi Stab.-Stab 15-40m	26. Cropland
4. Land with Open Scrub	12. Under-utilised/degraded forest (Agriculture)	20. Mining Wastelands	27. Fallow Land
5. Waterlogged and Marshy land (Permanent)	13. Degraded pastures/ grazing land	21. Industrial wastelands	28. Plantation
6. Waterlogged and Marshy land (Seasonal)	14. Degraded land under plantation crop	22. Barren Rocky/Stony waste	29. Forest-Dense/Open
7. Land affected by salinity/alkalinity (Medium)	15. Sands-Riverine	23. Snow covered /Glacial area	30. Forest Plantation
8. Land affected by salinity/alkalinity (Strong)	16. Sands-Coastal	999. Non-Wasteland Area	31. Grasslands
			32. Waterbodies

Mizoram

Wastelands Area Changes – 2008-09 and 2015-16

District	WL_Class	1	2	3	4	5	6	7	8	9	10	11
Aizawl	2008-09	--	--	279.18	88.34	--	--	--	--	106.33	245.05	169.28
	2015-16	--	--	208.76	98.68	--	--	--	--	124.58	188.01	160.71
	Change	--	--	-70.41	10.33	--	--	--	--	18.25	-57.04	-8.57
Champhai	2008-09	--	--	345.12	130.73	--	--	--	--	193.41	280.06	25.42
	2015-16	--	--	395.76	118.68	--	--	--	--	215.37	248.26	25.82
	Change	--	--	50.65	-12.05	--	--	--	--	21.96	-31.80	0.40
Kolasib	2008-09	--	--	80.34	2.51	--	--	--	--	2.57	42.61	62.85
	2015-16	--	--	37.21	15.06	--	--	--	--	17.88	31.70	61.64
	Change	--	--	-43.13	12.55	--	--	--	--	15.30	-10.91	-1.21
Lawngtlai	2008-09	--	--	199.13	21.92	--	--	--	--	52.70	71.41	82.69
	2015-16	--	--	92.30	51.16	--	--	--	--	46.18	82.32	80.77
	Change	--	--	-106.83	29.24	--	--	--	--	-6.52	10.92	-1.92
Lunglei	2008-09	--	--	497.19	41.69	--	--	--	--	84.09	80.80	110.53
	2015-16	--	--	407.92	46.98	--	--	--	--	111.00	151.34	112.77
	Change	--	--	-89.26	5.28	--	--	--	--	26.91	70.54	2.24
Mamit	2008-09	--	--	253.30	52.15	--	--	--	--	58.67	83.59	75.54
	2015-16	--	--	55.15	35.17	--	--	--	--	75.36	107.20	75.17
	Change	--	--	-198.15	-16.98	--	--	--	--	16.69	23.61	-0.36
Saiha	2008-09	--	--	379.08	68.60	--	--	--	--	29.84	96.15	24.38
	2015-16	--	--	232.73	54.77	--	--	--	--	34.93	100.31	23.22
	Change	--	--	-146.36	-13.83	--	--	--	--	5.10	4.15	-1.16
Serchhip	2008-09	--	--	192.28	54.84	--	--	--	--	74.47	134.62	4.11
	2015-16	--	--	156.99	46.38	--	--	--	--	66.26	102.25	3.90
	Change	--	--	-35.28	-8.46	--	--	--	--	-8.21	-32.36	-0.20
Grand Total	2008-09	--	--	2225.61	460.80	--	--	--	--	602.08	1034.28	554.78
	2015-16	--	--	1586.84	466.88	--	--	--	--	691.55	1011.39	544.00
	Change	--	--	-638.78	6.08	--	--	--	--	89.47	-22.90	-10.78

Note: "--" Denotes this Class is not existing in the District / State

2008-09 Wastelands statistics are revised version.

- | | |
|--|--|
| 1. Gullied and/ or ravinous land (Medium) | 7. Land affected by salinity/alkalinity (Medium) |
| 2. Gullied and/ or ravinous land (Deep) | 8. Land affected by salinity/alkalinity (Strong) |
| 3. Land with Dense Scrub | 9. Shifting Cultivation - Current Jhum |
| 4. Land with Open Scrub | 10. Shifting Cultivation - Abandoned Jhum |
| 5. Waterlogged and Marshy land (Permanent) | 11. Under-utilised/degraded forest (Scrub domin) |
| 6. Waterlogged and Marshy land (Seasonal) | 12. Under-utilised/degraded forest (Agriculture) |

Area in sq.km

12	13	14	15	16	17	18	19	20	21	22	23	Total	TGA
--	--	--	--	--	--	--	--	--	--	--	--	888.18	3576
--	--	--	--	--	--	--	--	--	--	--	--	780.74	
--	--	--	--	--	--	--	--	--	--	--	--	-107.44	
--	--	--	--	--	--	--	--	--	--	--	--	974.74	3185
--	--	--	--	--	--	--	--	--	--	--	--	1003.90	
--	--	--	--	--	--	--	--	--	--	--	--	29.16	
--	--	--	--	--	--	--	--	--	--	--	--	190.88	1382
--	--	--	--	--	--	--	--	--	--	--	--	163.49	
--	--	--	--	--	--	--	--	--	--	--	--	-27.40	
--	--	--	--	--	--	--	--	--	--	--	--	427.84	1991
--	--	--	--	--	--	--	--	--	--	--	--	352.73	
--	--	--	--	--	--	--	--	--	--	--	--	-75.11	
--	--	--	--	--	--	--	--	--	--	--	--	814.30	4536
--	--	--	--	--	--	--	--	--	--	--	--	830.00	
--	--	--	--	--	--	--	--	--	--	--	--	15.70	
--	--	--	--	--	--	--	--	--	--	--	--	523.25	3025
--	--	--	--	--	--	--	--	--	--	--	--	348.05	
--	--	--	--	--	--	--	--	--	--	--	--	-175.20	
--	--	--	--	--	--	--	--	--	--	--	--	598.05	1965
--	--	--	--	--	--	--	--	--	--	--	--	445.96	
--	--	--	--	--	--	--	--	--	--	--	--	-152.09	
--	--	--	--	--	--	--	--	--	--	--	--	460.31	1421
--	--	--	--	--	--	--	--	--	--	--	--	375.79	
--	--	--	--	--	--	--	--	--	--	--	--	-84.52	
--	--	--	--	--	--	--	--	--	--	--	--	4877.55	21081
--	--	--	--	--	--	--	--	--	--	--	--	4300.66	
--	--	--	--	--	--	--	--	--	--	--	--	-576.90	

TGA - Total Geographical Area

13. Degraded pastures/ grazing land	19. Sands-Semi Stab.-Stab 15-40m
14. Degraded land under plantation crop	20. Mining Wastelands
15. Sands-Riverine	21. Industrial wastelands
16. Sands-Coastal	22. Barren Rocky/Stony waste
17. Sands-Desertic	23. Snow covered /Glacial area
18. Sands-Semi Stab.-Stab>40m	

