

### Salient Features

- Increase of wastelands area by 377.79 sq. km.
- An area of 98.75 sq.km. wastelands is converted to crop/fallow land and maximum contribution from **land with dense and open scrub.**
- A net decrease in wastelands area by 32.28 sq. km. & 15.06 sq. km. in Nizamabad & Nalgonda districts respectively.
- A net increase is observed in Wastelands area by 255.85 sq. Km in Khammam district followed by 129.10 sq. km. in Warangal district .

# TELANGANA Spatial Distribution of Wastelands 2015-16



MAHARASHTRA

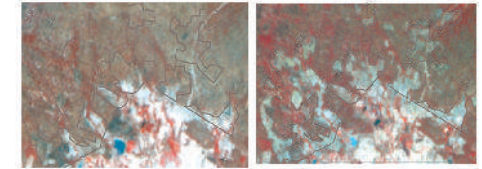
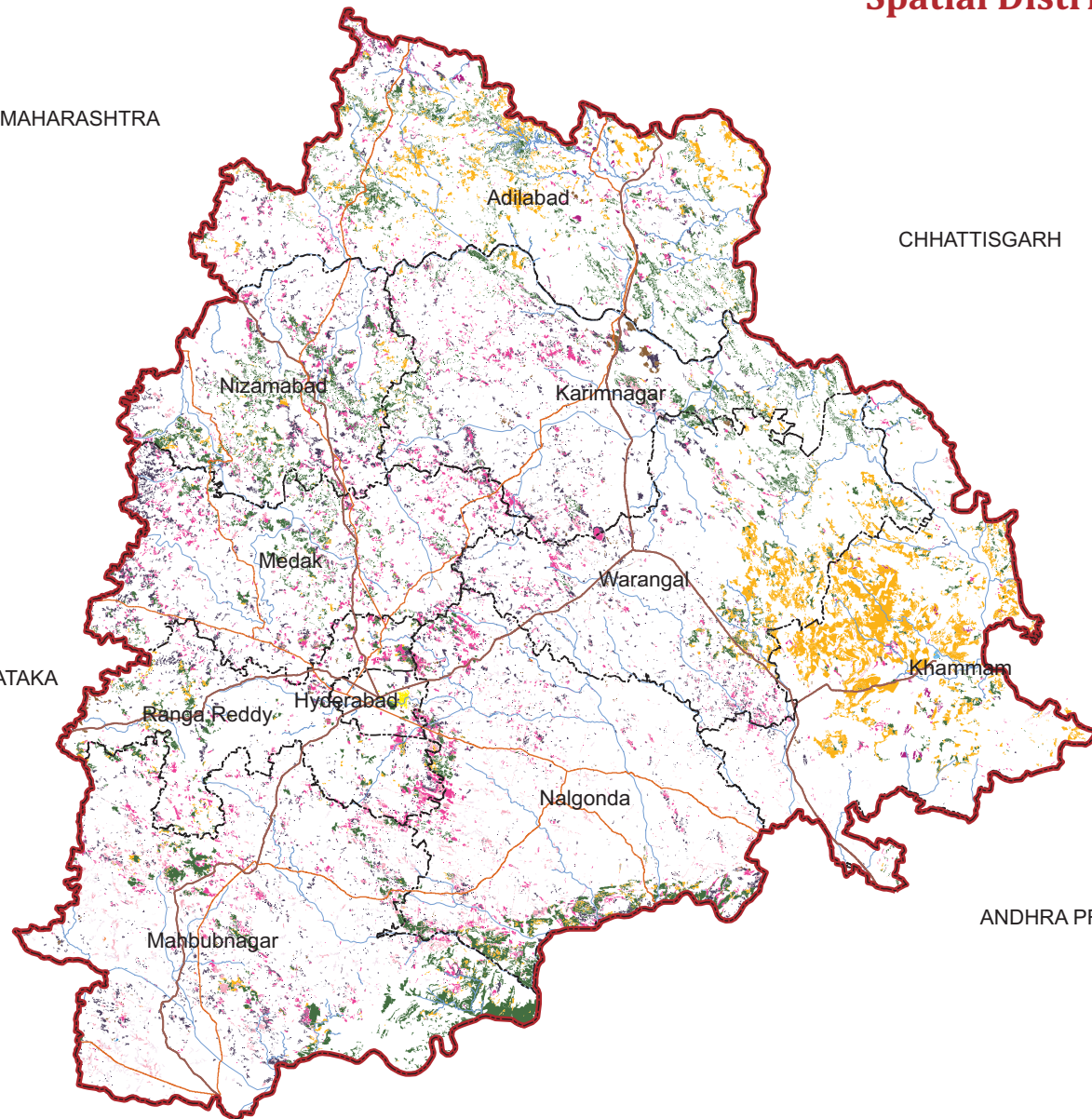
CHHATTISGARH

KARNATAKA

ANDHRA PRADESH

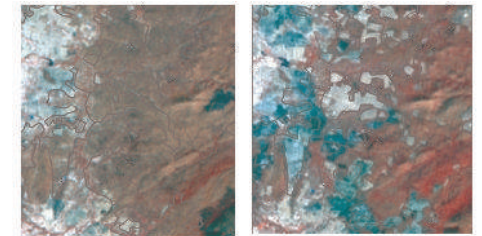
**Legend**

- Gullied and/ or ravinous land (Medium)
- Gullied and/ or ravinous land (Deep)
- Land with Dense Scrub
- Land with Open Scrub
- Waterlogged and Marshy land (Permanent)
- Waterlogged and Marshy land (Seasonal)
- Land Affected by salinity / alkalinity (Moderate)
- Land Affected by salinity / alkalinity (Strong)
- Shifting Cultivation - Current Jhum
- Shifting Cultivation - Abandoned Jhum
- Under-utilised/degraded forest (Scrub domin)
- Under-utilised/degraded forest (Agriculture)
- Degraded pastures/grazing land
- Degraded land under plantation crop
- Sands - Riverine
- Sands - Coastal
- Sands - Desertic
- Sands - Semi Stab:- Stab > 40m
- Sands - Semi Stab:- Stab 15-40m
- Mining Wastelands
- Industrial Wastelands
- Barren Rocky Area
- Snow Covered/ Glacial Area
- Non Wasteland Area
- Water ways
- International Boundary
- State Boundary
- District Boundary
- Railways
- Major Roads



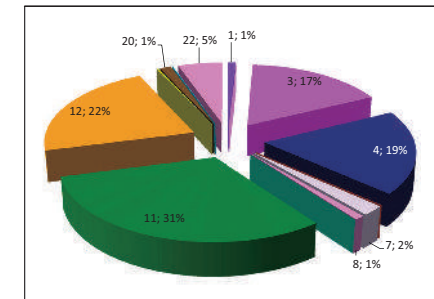
Lat :18°4'11.838"N Long : 80°34'47.97"E  
District : Khammam

08-09 : Non-WL ; 15-16 : Degraded forest(Agriculture)



Lat :17°57'45.933"N Long 80°13'37.734"E  
District : Warangal

08-09 : Non-WL; 15-16 : Degraded forest(Agriculture)



**Partner Inst.**  
Telangana Remote Sensing Applns. Centre  
(Planning Dept., Govt. of Telanagana)  
Directorate of Economics & Statistics Campus  
Khairatabad, Hyderabad-500 004

**Executed By**  
Land Use & Cover Monitoring Divn.  
LRUMG,Remote Sensing Application  
National Remote Sensing Centre  
ISRO, Dept. of Space, GOI  
Balanagar, Hyderabad - 500037

**Sponsored by**  
Dept. of Land Resources  
Min. of Rural Development  
G - Wing, Nirman Bhawan  
GOI, New Delhi - 110 011

Total Geog. Area (TGA): 112079.00 sq. km.  
Total wasteland area : 14241.21 sq. km.  
Wasteland Percentage: 12.71

Source: Wasteland Maps: 2008-09 on 1:50,000 scale,  
Three seasons IRS P6 LISS-III data of Kharif(Oct/Nov-2015),  
Rabi (Jan/Feb-2016) and Zaid (April/May-2016) & Ground truth

## TELANGANA

### Wastelands Area Change Matrix : 2008-09 and 2015-16

Area in sq.km

WL Categories	WL during 2008-09 remaining as WL in 2015-16														WL 2008-09 becoming non-WL in 2015-16						2008-09							
	1	2	3	4	5	6	7	8	11	12	13	14	15	19	20	21	22	24	25	26	27	28	30	32	Category Total	Grand Total		
1	127.61			0.19																	0.03			0.26	128.10	13863.42		
2		0.04																									0.04	
3			2380.41	28.91		0.07	0.24		0.54	0.27					4.62	0.23		7.08	0.59	20.23	18.24	0.34		0.11	2461.88			
4			13.58	2628.57			1.61								4.21	0.09		4.85	1.45	22.15	34.62	0.28		1.22	2712.63			
5					0.38																						0.38	
6						1.13																					1.13	
7				1.27	0.76	0.79	296.82	0.91										0.63		1.53	1.21						303.92	
8				0.16		0.15	0.17	126.55												0.56	0.06						127.63	
11									4422.43	0.18						0.33	0.29		0.70				0.34	0.11	4424.39		13863.42	
12										2742.65																		2742.65
13				0.03							27.47							2.43		0.12								30.07
14												2.35																2.35
15													3.14															3.14
19														0.35														0.35
20															146.59													146.59
21				0.17												7.98												8.14
22																1.69									768.34			770.03
999	0.40		5.64	23.49	0.02		5.45	3.25	29.71	390.58	0.09		0.35		36.67	1.29												
Category Total (2015-16)	128.01	0.04	2399.63	2682.79	1.16	2.14	304.29	130.70	4452.67	3133.68	27.56	2.35	3.49	0.35	194.12	9.88	768.34	14.99	2.74	44.59	54.16	0.62	0.34	1.70				
Grand Total (2015-16)	14241.21																											

WL Category	Reduction from 0809 to 1516		Increase from 0809 to 1516	
	Area	No of polygons	Area	No of polygons
1	0.30	2	0.40	1
2				
3	46.60	403	5.64	39
4	64.56	587	23.49	128
5			0.02	1
6				
7	3.37	32	5.45	20
8	0.61	6	3.25	10
11	1.15	4	29.71	63
12			390.58	818
13	2.56	10	0.09	2
14				
15			0.35	1
19				
20			36.67	148
21			1.29	5
22				
Total	119.15	1044	496.94	1236

Wastelands becoming Non-wastelands (-) 119.15  
 Non-wastelands becoming Wastelands (+) 496.94  
 NET Change (2015 - 16) - (2008 - 09) (+) 377.79

Green denotes Change from wasteland to non-wasteland  
Red denotes change from non-wasteland to wastelands  
Blue denotes no change in the wasteland category  
 2008 - 09 Wastelands statistics are revised version.  
 Area under category total is rounded to nearest decimal.

Wasteland Classes		Non-Wasteland Classes	
1. Gullied and/ or ravinous land (Medium)	9. Shifting Cultivation - Current Jhum	17. Sands-Desertic	24. Built-up
2. Gullied and/ or ravinous land (Deep)	10. Shifting Cultivation - Abandoned Jhum	18. Sands-Semi Stab.-Stab>40m	25. Industrial Area
3. Land with Dense Scrub	11. Under-utilised/degraded forest (Scrub domin)	19. Sands-Semi Stab.-Stab 15-40m	26. Cropland
4. Land with Open Scrub	12. Under-utilised/degraded forest (Agriculture)	20. Mining Wastelands	27. Fallow Land
5. Waterlogged and Marshy land (Permanent)	13. Degraded pastures/ grazing land	21. Industrial wastelands	28. Plantation
6. Waterlogged and Marshy land (Seasonal)	14. Degraded land under plantation crop	22. Barren Rocky/Stony waste	29. Forest-Dense/Open
7. Land affected by salinity/alkalinity (Medium)	15. Sands-Riverine	23. Snow covered /Glacial area	30. Forest Plantation
8. Land affected by salinity/alkalinity (Strong)	16. Sands-Coastal	999. Non-Wasteland Area	31. Grasslands
			32. Waterbodies

# Telangana

Wastelands Area Changes – 2008-09 and 2015-16

District	WL_Class	1	2	3	4	5	6	7	8	9	10	11
Adilabad	2008-09	68.23	--	212.84	188.71	--	--	9.51	2.77	--	--	882.59
	2015-16	67.74	--	203.26	187.51	--	--	12.00	2.77	--	--	883.35
	Change	-0.48	--	-9.59	-1.20	--	--	2.49	0.00	--	--	0.76
Hyderabad	2008-09	--	--	3.34	1.38	--	--	--	--	--	--	--
	2015-16	--	--	3.34	1.38	--	--	--	--	--	--	--
	Change	--	--	0.00	0.00	--	--	--	--	--	--	--
Karimnagar	2008-09	3.37	--	282.82	417.56	--	--	0.03	--	--	--	377.73
	2015-16	3.37	--	280.56	412.52	--	--	0.03	--	--	--	377.68
	Change	0.00	--	-2.27	-5.04	--	--	0.00	--	--	--	-0.05
Khammam	2008-09	39.82	--	81.15	30.06	--	--	5.94	0.48	--	--	208.57
	2015-16	40.22	--	77.05	31.55	--	--	5.89	0.48	--	--	227.24
	Change	0.40	--	-4.09	1.49	--	--	-0.05	0.00	--	--	18.67
Mahbubnagar	2008-09	1.62	--	343.52	414.26	0.38	0.37	197.83	70.20	--	--	891.53
	2015-16	1.62	--	342.58	419.49	1.16	1.38	196.94	73.07	--	--	892.79
	Change	0.00	--	-0.94	5.23	0.78	1.01	-0.89	2.87	--	--	1.26
Medak	2008-09	2.07	--	416.37	483.97	--	--	--	--	--	--	314.78
	2015-16	2.07	--	412.74	481.88	--	--	--	--	--	--	314.72
	Change	0.00	--	-3.63	-2.09	--	--	--	--	--	--	-0.06
Nalgonda	2008-09	1.19	0.04	402.52	299.53	--	0.76	67.53	53.02	--	--	572.24
	2015-16	1.19	0.04	387.81	298.80	--	0.76	67.52	53.22	--	--	571.61
	Change	0.00	0.00	-14.70	-0.73	--	0.00	-0.01	0.20	--	--	-0.64
Nizamabad	2008-09	9.83	--	244.96	355.47	--	--	0.68	--	--	--	521.94
	2015-16	9.83	--	234.19	333.68	--	--	0.68	--	--	--	521.94
	Change	0.00	--	-10.78	-21.78	--	--	0.00	--	--	--	0.00
Rangareddi	2008-09	0.28	--	304.96	199.97	--	--	2.84	0.25	--	--	267.32
	2015-16	0.28	--	292.89	209.72	--	--	2.84	0.25	--	--	274.70
	Change	0.00	--	-12.07	9.75	--	--	0.00	0.00	--	--	7.38
Warangal	2008-09	1.68	--	169.39	321.72	--	--	19.56	0.92	--	--	387.69
	2015-16	1.68	--	165.20	306.25	--	--	18.39	0.92	--	--	388.65
	Change	0.00	--	-4.19	-15.46	--	--	-1.18	0.00	--	--	0.96
Grand Total	2008-09	128.10	0.04	2461.88	2712.63	0.38	1.13	303.92	127.63	--	--	4424.39
	2015-16	128.01	0.04	2399.63	2682.79	1.16	2.14	304.29	130.70	--	--	4452.67
	Change	-0.09	0.00	-62.25	-29.84	0.78	1.01	0.37	3.07	--	--	28.29

Note: "--" Denotes this Class is not existing in the District / State

2008-09 Wastelands statistics are revised version.

- |  |  |
|--|--|
| 1. Gullied and/ or ravinous land (Medium)  | 7. Land affected by salinity/alkalinity (Medium) |
| 2. Gullied and/ or ravinous land (Deep)    | 8. Land affected by salinity/alkalinity (Strong) |
| 3. Land with Dense Scrub                   | 9. Shifting Cultivation - Current Jhum           |
| 4. Land with Open Scrub                    | 10. Shifting Cultivation - Abandoned Jhum        |
| 5. Waterlogged and Marshy land (Permanent) | 11. Under-utilised/degraded forest (Scrub domin) |
| 6. Waterlogged and Marshy land (Seasonal)  | 12. Under-utilised/degraded forest (Agriculture) |

Area in sq.km

12	13	14	15	16	17	18	19	20	21	22	23	Total	TGA
597.31	0.05	--	0.17	--	--	--	0.35	4.07	0.17	24.51	--	1991.28	16128
605.70	0.05	--	0.53	--	--	--	0.35	13.01	--	24.51	--	2000.79	
8.39	0.00	--	0.35	--	--	--	0.00	8.94	-0.17	0.00	--	9.51	
--	0.50	--	--	--	--	--	--	--	--	--	--	5.23	217
--	0.48	--	--	--	--	--	--	--	--	--	--	5.20	
--	-0.03	--	--	--	--	--	--	--	--	--	--	-0.03	
51.12	--	--	0.10	--	--	--	--	49.78	0.16	73.40	--	1256.09	11823
51.12	--	--	0.10	--	--	--	--	62.67	0.16	73.08	--	1261.29	
0.00	--	--	0.00	--	--	--	--	12.88	0.00	-0.33	--	5.20	
1374.72	--	--	--	--	--	--	--	9.22	5.12	35.00	--	1790.07	13245
1611.67	--	--	--	--	--	--	--	11.19	5.64	35.00	--	2045.93	
236.95	--	--	0.00	--	--	--	--	1.97	0.51	0.00	--	255.85	
80.02	--	--	0.18	--	--	--	--	8.24	--	227.63	--	2235.78	18432
80.02	--	--	0.18	--	--	--	--	12.57	0.06	227.54	--	2249.41	
0.00	--	--	0.00	--	--	--	--	4.33	0.06	-0.10	--	13.63	
20.43	--	2.03	--	--	--	--	--	11.42	0.28	47.15	--	1298.50	9699
20.43	--	2.03	--	--	--	--	--	17.33	0.28	46.54	--	1298.02	
0.00	--	0.00	--	--	--	--	--	5.91	0.00	-0.61	--	-0.48	
78.84	--	--	0.12	--	--	--	--	25.70	0.71	185.24	--	1687.44	14240
78.86	--	--	0.12	--	--	--	--	26.33	1.17	184.96	--	1672.38	
0.02	--	--	0.00	--	--	--	--	0.63	0.45	-0.28	--	-15.06	
68.40	--	--	0.46	--	--	--	--	0.80	--	43.08	--	1245.62	7956
68.58	--	--	0.46	--	--	--	--	0.95	--	43.03	--	1213.34	
0.19	--	--	0.00	--	--	--	--	0.15	--	-0.06	--	-32.28	
78.99	29.51	0.00	--	--	--	--	--	28.12	1.70	54.94	--	968.87	7493
79.41	27.04	0.00	--	--	--	--	--	37.54	1.87	54.69	--	981.23	
0.42	-2.48	0.00	--	--	--	--	--	9.42	0.17	-0.24	--	12.36	
392.82	--	0.32	2.11	--	--	--	--	9.24	--	79.07	--	1384.52	12846
537.88	--	0.32	2.11	--	--	--	--	12.52	0.71	79.00	--	1513.62	
145.06	--	0.00	0.00	--	--	--	--	3.28	0.71	-0.07	--	129.10	
2742.65	30.07	2.35	3.14	--	--	--	0.35	146.59	8.14	770.03	--	13863.42	112079
3133.68	27.56	2.35	3.49	--	--	--	0.35	194.12	9.88	768.34	--	14241.21	
391.03	-2.50	0.00	0.35	--	--	--	0.00	47.53	1.74	-1.69	--	377.79	

TGA - Total Geographical Area

13. Degraded pastures/ grazing land	19. Sands-Semi Stab.-Stab 15-40m
14. Degraded land under plantation crop	20. Mining Wastelands
15. Sands-Riverine	21. Industrial wastelands
16. Sands-Coastal	22. Barren Rocky/Stony waste
17. Sands-Desertic	23. Snow covered /Glacial area
18. Sands-Semi Stab.-Stab>40m	

