

Table 62: District - wise distribution of Wastelands

UTTAR PRADESH

Cat-egory	Agra	Aligarh	Allaha-bad	Ambed-karnagar	Auraiya	Azam-garh	Badaun	Bagpat	Ballia	Balram-pur	Banda	Bara-banki	Bareilly	Basti	Bhairch	Bijnor	Buland-shair	Chandauli	Chitrak-oot	Deoria	Etah	Etawah	Faiza-bad	Farrukha-bad	Fatehpur
1	102.91	0.00	33.25	4.10	13.44	33.76	0.71	0.00	0.00	0.00	102.86	18.60	0.00	3.02	0.00	0.00	7.59	0.00	8.63	0.00	0.00	15.40	7.05	0.00	80.99
2	56.08	0.00	0.00	0.00	42.93	0.00	0.00	0.00	0.00	0.00	0.00	0.00	0.00	0.00	0.00	0.00	0.00	0.00	0.00	0.00	0.00	20.63	0.00	0.00	0.00
3	12.85	3.81	51.03	1.81	0.00	7.96	96.75	1.23	78.32	15.84	2.91	49.85	4.16	8.50	57.46	1.26	10.15	27.15	40.50	15.54	0.73	0.00	18.42	1.28	4.19
4	37.33	0.67	69.11	9.97	0.00	41.83	40.61	0.00	0.00	64.24	5.65	48.86	26.30	12.02	72.03	1.45	2.23	18.48	112.27	3.72	3.80	0.21	16.75	19.57	1.90
5	0.00	17.77	23.07	1.99	0.00	47.80	6.03	0.00	4.95	11.28	0.00	11.28	1.18	6.25	3.36	0.00	5.38	5.55	0.00	3.40	2.13	0.00	0.51	0.66	4.39
6	0.03	5.91	19.76	13.36	7.26	17.23	3.87	0.00	1.98	20.37	0.00	13.84	0.66	36.09	2.27	0.78	3.93	1.74	0.00	2.12	9.71	1.38	9.47	32.44	11.11
7	6.53	45.64	17.49	11.56	82.52	70.96	8.36	0.00	3.80	0.00	0.00	27.99	2.99	0.64	0.00	0.00	15.19	0.95	0.00	0.00	108.35	49.44	12.97	51.58	112.76
8	2.04	7.21	15.68	5.17	14.17	35.66	14.94	0.00	3.76	0.00	0.00	14.85	2.13	0.44	0.00	0.00	7.65	2.43	0.00	0.00	17.01	4.23	7.04	0.20	14.33
9	0.00	0.00	0.00	0.00	0.00	0.00	0.00	0.00	0.00	0.00	0.00	0.00	0.00	0.00	0.00	0.00	0.00	0.00	0.00	0.00	0.00	0.00	0.00	0.00	0.00
10	0.00	0.00	0.00	0.00	0.00	0.00	0.00	0.00	0.00	0.00	0.00	0.00	0.00	0.00	0.00	0.00	0.00	0.00	0.00	0.00	0.00	0.00	0.00	0.00	0.00
11	191.69	0.03	21.24	0.00	66.43	0.00	24.11	0.57	0.00	46.63	1.65	3.28	0.00	0.00	82.34	0.75	6.45	14.59	34.37	0.00	0.00	196.83	0.00	0.00	0.00
12	0.00	0.00	0.00	0.00	0.18	0.00	0.27	0.03	0.00	1.04	0.00	0.00	0.00	0.00	14.51	0.00	0.46	0.00	0.00	0.00	0.00	0.00	0.00	0.00	0.00
13	0.40	0.00	0.00	0.00	0.00	0.00	0.00	0.00	0.00	0.00	0.59	0.00	0.00	0.00	13.79	0.00	0.00	0.00	0.00	0.00	0.00	0.00	0.00	0.00	0.00
14	0.00	0.00	0.00	0.00	0.00	0.00	0.00	0.00	0.00	3.48	0.00	0.00	0.00	0.00	0.00	0.00	0.00	0.00	0.00	0.00	0.00	0.00	0.00	0.00	0.00
15	0.00	0.00	1.56	0.22	0.00	3.61	0.00	0.00	19.29	0.00	0.00	0.36	13.08	1.55	0.00	0.00	0.00	0.12	0.00	0.07	0.00	0.65	0.06	0.82	0.00
16	0.00	0.00	0.00	0.00	0.00	0.00	0.00	0.00	0.00	0.00	0.00	0.00	0.00	0.00	0.00	0.00	0.00	0.00	0.00	0.00	0.00	0.00	0.00	0.00	0.00
17	0.00	0.00	0.00	0.00	0.00	0.00	0.00	0.00	0.00	0.00	0.00	0.00	0.00	0.00	0.00	0.00	0.00	0.00	0.00	0.00	0.00	0.00	0.00	0.00	0.00
18	0.00	0.00	0.00	0.00	0.00	0.00	0.00	0.00	0.00	0.00	0.00	0.00	0.00	0.00	0.00	0.00	0.00	0.00	0.00	0.00	0.00	0.00	0.00	0.00	0.00
19	0.00	0.00	0.00	0.00	0.00	0.00	0.00	0.00	0.00	0.00	0.00	0.00	0.00	0.00	0.00	0.00	0.00	0.00	0.00	0.00	0.00	0.00	0.00	0.00	0.00
20	0.00	0.00	0.00	0.00	0.00	0.00	0.00	0.00	0.00	0.00	0.00	0.00	0.00	0.00	0.00	0.00	0.00	0.00	0.00	0.00	0.00	0.00	0.00	0.00	0.00
21	0.00	0.00	3.78	0.00	0.00	0.00	0.00	0.00	0.00	0.00	0.00	0.00	0.00	0.00	0.00	0.00	0.00	0.00	0.00	0.00	0.00	0.00	0.00	0.00	0.00
22	13.46	0.00	146.33	0.00	0.00	0.00	0.00	0.00	0.00	0.00	3.42	0.00	0.00	0.00	0.00	0.00	0.00	3.98	17.94	0.00	0.00	0.00	0.00	0.00	0.00
23	0.00	0.00	0.00	0.00	0.00	0.00	0.00	0.00	0.00	0.00	0.00	0.00	0.00	0.00	0.00	0.00	0.00	0.00	0.00	0.00	0.00	0.00	0.00	0.00	0.00
Total	423.32	81.04	402.30	48.18	226.93	258.81	195.65	1.83	112.10	162.88	117.08	188.91	50.50	68.51	245.76	4.24	59.03	74.99	213.71	24.85	141.73	288.77	72.27	106.55	229.67
TGA	4027	2881	5482	2350	2015	4054	5168	1321	2981	3349	4460	4402	4120	2688	4420	4561	4352	2541	3164	2538	4446	2311	2341	2181	4152
% to TGA	10.51	2.81	7.34	2.05	11.26	6.38	3.79	0.14	3.76	4.86	2.63	4.29	1.23	2.55	5.56	0.09	1.36	2.95	6.75	0.98	3.19	12.50	3.09	4.89	5.53

- | | | | | |
|--|--|--|----------------------------------|--------------------------------|
| 1. Gullied and/ or ravinous land (Medium) | 6. Waterlogged and Marshy land (Seasonal) | 11. Under-utilised/degraded forest (Scrub domin) | 16. Sands-Coastal | 21. Industrial wastelands |
| 2. Gullied and/ or ravinous land (Deep) | 7. Land affected by salinity/alkalinity (Medium) | 12. Under-utilised/degraded forest (Agriculture) | 17. Sands-Desertic | 22. Barren Rocky/Stony waste |
| 3. Land with Dense Scrub | 8. Land affected by salinity/alkalinity (Strong) | 13. Degraded pastures/ grazing land | 18. Sands-Semi Stab.-Stab>40m | 23. Snow covered /Glacial area |
| 4. Land with Open Scrub | 9. Shifting Cultivation - Current Jhum | 14. Degraded land under plantation crop | 19. Sands-Semi Stab.-Stab 15-40m | Total - Total Wasteland Area |
| 5. Waterlogged and Marshy land (Permanent) | 10. Shifting Cultivation - Abandoned Jhum | 15. Sands-Riverine | 20. Mining Wastelands | TGA - Total Geographical Area |

UTTAR PRADESH Contd....

Category	Firozabad	Ghaziaabad	Ghazipur	Gonda	Gorakhpur	Gutambud-danagar	Hamirpur	Hardoi	Jalaun	Jaunpur	Jhansi	Jyotiba-raophu-lenagar	Kannauj	Kanpur R	Kanpur U	Kanshiram-nagar	Kosambi	Kushnagar	Lakhimpur Kheri	Lalitpur	Lucknow	Mahamayana-gar	Maharaj-ganj	Mahoba
1	31.47	2.14	3.28	0.00	0.00	0.54	90.30	3.12	166.78	33.04	112.96	0.00	0.00	82.13	23.92	0.00	2.57	0.36	0.00	0.00	0.07	2.08	0.00	5.81
2	68.34	0.00	0.00	0.00	0.00	0.00	14.44	0.00	34.10	0.00	8.08	0.00	0.00	20.03	0.00	0.00	0.00	0.00	0.00	0.00	0.00	0.00	0.00	0.00
3	0.10	8.47	0.65	30.89	13.68	5.75	2.82	1.73	1.90	1.65	50.60	9.04	0.45	0.00	4.69	25.58	0.00	8.57	86.54	116.21	1.38	0.32	0.00	2.47
4	0.00	0.23	11.66	91.07	0.01	4.48	2.75	43.67	1.79	17.06	235.18	6.20	15.12	5.63	26.63	9.60	2.40	0.64	31.73	152.99	8.05	0.13	1.60	36.11
5	0.00	12.61	8.35	4.47	9.33	1.67	0.00	4.53	0.00	10.98	0.00	0.00	0.49	0.66	0.27	28.34	1.34	2.32	32.77	0.00	0.60	9.57	0.71	0.00
6	0.83	3.51	4.23	9.82	30.56	0.47	0.00	27.44	0.00	44.52	0.00	11.17	5.17	9.94	10.64	4.14	3.76	16.83	14.08	0.00	15.54	9.09	5.23	0.00
7	67.83	0.50	40.85	0.00	2.01	2.78	1.25	131.33	0.00	76.42	0.00	6.15	123.45	133.39	91.12	19.56	8.08	0.31	10.97	0.00	89.20	41.82	0.14	0.00
8	12.18	0.00	2.52	0.00	0.98	1.75	0.00	27.99	0.00	48.31	0.00	0.00	10.84	11.47	6.23	0.32	32.75	0.00	1.73	0.00	35.48	25.21	0.00	0.00
9	0.00	0.00	0.00	0.00	0.00	0.00	0.00	0.00	0.00	0.00	0.00	0.00	0.00	0.00	0.00	0.00	0.00	0.00	0.00	0.00	0.00	0.00	0.00	0.00
10	0.00	0.00	0.00	0.00	0.00	0.00	0.00	0.00	0.00	0.00	0.00	0.00	0.00	0.00	0.00	0.00	0.00	0.00	0.00	0.00	0.00	0.00	0.00	0.00
11	50.93	1.76	0.00	21.96	0.00	0.86	97.04	0.12	141.17	0.00	63.04	18.61	0.00	41.68	9.81	0.00	0.00	0.00	136.30	76.90	0.00	0.82	26.06	10.23
12	0.00	0.00	0.00	2.68	0.00	0.00	0.15	0.00	1.81	0.00	1.81	0.00	0.00	0.00	0.00	0.00	0.00	0.49	12.63	0.00	0.00	0.00	12.41	0.00
13	0.00	0.00	0.00	0.00	0.00	0.00	0.00	0.00	0.00	0.00	0.00	0.00	0.00	0.00	0.00	0.00	0.00	0.00	0.00	0.00	0.00	0.00	0.00	0.00
14	0.00	0.00	0.00	0.00	0.00	0.00	0.00	0.00	0.00	0.00	0.00	0.00	0.00	0.00	0.00	0.00	0.00	0.00	0.00	0.00	0.00	0.00	0.00	0.00
15	0.00	0.00	5.17	1.33	26.24	3.27	0.00	0.34	0.00	0.00	0.00	0.00	0.00	0.00	0.00	0.00	0.00	0.00	6.99	0.00	0.00	0.00	0.00	0.00
16	0.00	0.00	0.00	0.00	0.00	0.00	0.00	0.00	0.00	0.00	0.00	0.00	0.00	0.00	0.00	0.00	0.00	0.00	0.00	0.00	0.00	0.00	0.00	0.00
17	0.00	0.00	0.00	0.00	0.00	0.00	0.00	0.00	0.00	0.00	0.00	0.00	0.00	0.00	0.00	0.00	0.00	0.00	0.00	0.00	0.00	0.00	0.00	0.00
18	0.00	0.00	0.00	0.00	0.00	0.00	0.00	0.00	0.00	0.00	0.00	0.00	0.00	0.00	0.00	0.00	0.00	0.00	0.00	0.00	0.00	0.00	0.00	0.00
19	0.00	0.00	0.00	0.00	0.00	0.00	0.00	0.00	0.00	0.00	0.00	0.00	0.00	0.00	0.00	0.00	0.00	0.00	0.00	0.00	0.00	0.00	0.00	0.00
20	0.00	0.00	0.00	0.00	0.00	0.00	0.00	0.00	0.00	0.00	6.01	0.00	0.00	0.00	0.00	0.00	0.00	0.00	0.00	1.04	0.00	0.00	0.00	2.20
21	0.00	0.00	0.00	0.00	0.00	0.00	0.00	0.00	0.00	0.00	0.00	0.00	0.00	0.00	0.00	0.00	0.00	0.00	0.00	1.24	0.00	0.00	0.00	0.00
22	0.00	0.00	0.00	0.00	0.00	0.00	0.00	0.00	0.00	0.00	61.53	0.00	0.00	0.00	0.00	0.00	0.00	0.00	0.00	62.33	0.00	0.00	0.00	16.79
23	0.00	0.00	0.00	0.00	0.00	0.00	0.00	0.00	0.00	0.00	0.00	0.00	0.00	0.00	0.00	0.00	0.00	0.00	0.00	0.00	0.00	0.00	0.00	0.00
Total	231.68	29.22	76.71	162.22	82.81	21.57	208.75	240.27	347.55	231.98	539.21	51.17	155.52	304.93	173.31	87.54	50.90	29.52	333.74	410.71	150.32	89.04	46.15	73.61
TGA	2361	1148	3377	4003	3321	1442	4282	5986	4565	4038	5024	2249	2093	3021	3155	1958	1780	2906	7680	5039	2528	1840	2948	2884
% to TGA	9.81	2.55	2.27	4.05	2.49	1.50	4.88	4.01	7.61	5.74	10.73	2.28	7.43	10.09	5.49	4.47	2.86	1.02	4.35	8.15	5.95	4.84	1.57	2.55

- | | | | | |
|--|--|--|----------------------------------|--------------------------------|
| 1. Gullied and/ or ravinous land (Medium) | 6. Waterlogged and Marshy land (Seasonal) | 11. Under-utilised/degraded forest (Scrub domin) | 16. Sands-Coastal | 21. Industrial wastelands |
| 2. Gullied and/ or ravinous land (Deep) | 7. Land affected by salinity/alkalinity (Medium) | 12. Under-utilised/degraded forest (Agriculture) | 17. Sands-Desertic | 22. Barren Rocky/Stony waste |
| 3. Land with Dense Scrub | 8. Land affected by salinity/alkalinity (Strong) | 13. Degraded pastures/ grazing land | 18. Sands-Semi Stab.-Stab>40m | 23. Snow covered /Glacial area |
| 4. Land with Open Scrub | 9. Shifting Cultivation - Current Jhum | 14. Degraded land under plantation crop | 19. Sands-Semi Stab.-Stab 15-40m | Total - Total Wasteland Area |
| 5. Waterlogged and Marshy land (Permanent) | 10. Shifting Cultivation - Abandoned Jhum | 15. Sands-Riverine | 20. Mining Wastelands | TGA - Total Geographical Area |

UTTAR PRADESH Contd....

Category	Mainpuri	Mathura	MauNath Bhanjan	Meerut	Mirzapur	Morada-bad	Muzaffar-nagar	Pilibhit	Pratap-garh	Raebareli	Rampur	Saharan-pur	St_Kabir-nagar	Santravi-dasnagar	Shahjah-anpur	Shravasti	Siddarth-nagar	Sitapur	Sonbadra	Sultanpur	Unno	Varanasi	Total
1	0.00	20.88	2.03	0.00	5.96	0.00	0.00	0.00	60.12	22.92	0.00	0.00	0.50	10.88	0.00	0.00	0.00	1.61	0.00	88.98	0.00	9.72	1216.48
2	0.00	0.00	0.00	0.00	0.00	0.00	0.00	0.00	0.00	0.00	0.00	0.00	0.00	0.00	0.00	0.00	0.00	0.00	0.00	0.00	0.00	0.00	264.63
3	0.94	27.20	9.04	4.47	26.48	1.91	16.98	76.89	0.00	9.97	2.99	1.42	0.00	0.00	19.53	16.64	0.06	12.16	29.43	0.58	17.87	0.44	1160.19
4	2.47	12.52	2.51	0.00	157.36	1.71	0.78	30.70	0.00	18.65	4.32	0.52	3.90	0.00	35.00	26.40	7.74	42.85	155.26	6.37	10.80	1.53	1835.12
5	0.00	15.95	10.89	0.00	0.00	0.00	0.00	2.25	7.72	8.08	0.00	0.00	0.00	4.14	9.23	1.45	0.84	18.24	0.00	7.58	0.00	4.18	376.54
6	12.08	2.29	4.02	29.44	0.00	0.00	0.00	3.19	33.06	33.05	1.84	0.00	7.62	2.30	4.44	1.72	29.34	13.27	0.00	81.20	17.17	2.81	721.12
7	140.50	4.64	12.95	0.00	1.12	0.00	0.00	0.02	94.07	115.23	0.38	0.00	0.00	13.95	19.24	0.00	0.00	35.34	0.00	107.06	162.48	9.42	2193.28
8	12.01	0.31	15.47	0.00	0.00	0.00	0.00	0.00	65.89	103.75	0.00	0.00	0.00	12.53	1.46	0.00	0.00	4.35	0.00	49.65	59.20	7.14	718.46
9	0.00	0.00	0.00	0.00	0.00	0.00	0.00	0.00	0.00	0.00	0.00	0.00	0.00	0.00	0.00	0.00	0.00	0.00	0.00	0.00	0.00	0.00	0.00
10	0.00	0.00	0.00	0.00	0.00	0.00	0.00	0.00	0.00	0.00	0.00	0.00	0.00	0.00	0.00	0.00	0.00	0.00	0.00	0.00	0.00	0.00	0.00
11	0.00	1.54	0.00	1.09	117.02	0.00	11.75	57.29	0.00	0.00	5.74	1.13	0.00	0.00	4.97	7.88	0.29	23.07	236.40	0.89	0.00	0.00	1857.31
12	0.00	0.00	0.00	0.00	0.00	0.00	0.00	10.36	0.00	0.00	0.00	0.00	0.00	0.00	0.54	0.00	0.00	3.12	2.12	0.00	0.00	0.00	64.61
13	0.00	0.00	0.00	0.00	0.00	0.00	0.00	0.00	0.00	0.00	0.00	0.00	0.00	0.00	0.00	6.69	0.00	0.00	0.00	0.00	0.00	0.00	21.47
14	0.00	0.00	0.00	0.00	0.00	0.00	0.00	0.00	0.00	0.00	0.00	0.00	0.00	0.00	0.00	0.00	0.00	0.00	0.00	0.00	0.00	0.00	3.48
15	0.00	0.00	0.00	0.00	0.00	0.28	0.00	8.69	0.00	0.00	8.15	0.00	0.00	0.00	6.00	0.00	0.43	0.00	0.00	0.09	0.00	1.55	109.92
16	0.00	0.00	0.00	0.00	0.00	0.00	0.00	0.00	0.00	0.00	0.00	0.00	0.00	0.00	0.00	0.00	0.00	0.00	0.00	0.00	0.00	0.00	0.00
17	0.00	0.00	0.00	0.00	0.00	0.00	0.00	0.00	0.00	0.00	0.00	0.00	0.00	0.00	0.00	0.00	0.00	0.00	0.00	0.00	0.00	0.00	0.00
18	0.00	0.00	0.00	0.00	0.00	0.00	0.00	0.00	0.00	0.00	0.00	0.00	0.00	0.00	0.00	0.00	0.00	0.00	0.00	0.00	0.00	0.00	0.00
19	0.00	0.00	0.00	0.00	0.00	0.00	0.00	0.00	0.00	0.00	0.00	0.00	0.00	0.00	0.00	0.00	0.00	0.00	0.00	0.00	0.00	0.00	0.00
20	0.00	0.00	0.00	0.00	0.36	0.00	0.00	0.00	0.00	0.00	0.00	0.00	0.00	0.29	0.00	0.00	0.00	0.00	0.00	6.26	0.00	0.00	16.16
21	0.00	0.00	0.00	0.00	0.04	2.01	0.00	0.00	0.00	0.00	0.00	0.00	0.00	1.02	0.00	0.00	0.00	0.00	9.98	0.00	0.00	0.00	18.07
22	0.00	0.23	0.00	0.00	85.74	0.00	0.00	0.00	0.00	0.00	0.00	0.00	0.00	0.00	0.00	0.00	0.00	0.00	0.00	0.00	0.00	0.00	411.75
23	0.00	0.00	0.00	0.00	0.00	0.00	0.00	0.00	0.00	0.00	0.00	0.00	0.00	0.00	0.00	0.00	0.00	0.00	0.00	0.00	0.00	0.00	0.00
Total	168.00	85.56	56.91	35.00	394.08	5.91	29.51	189.39	260.86	311.65	23.42	3.07	12.02	45.11	100.41	60.78	38.70	154.01	439.45	342.40	267.52	36.79	10988.59
TGA	2760	3340	1713	2590	4521	3718	4008	3499	3717	4609	2367	3689	1646	1015	4575	2458	2895	5743	6788	4436	4558	1535	240928
% to TGA	6.09	2.56	3.32	1.35	8.72	0.16	0.74	5.41	7.02	6.76	0.99	0.08	0.73	4.44	2.19	2.47	1.34	2.68	6.47	7.72	5.87	2.40	4.56

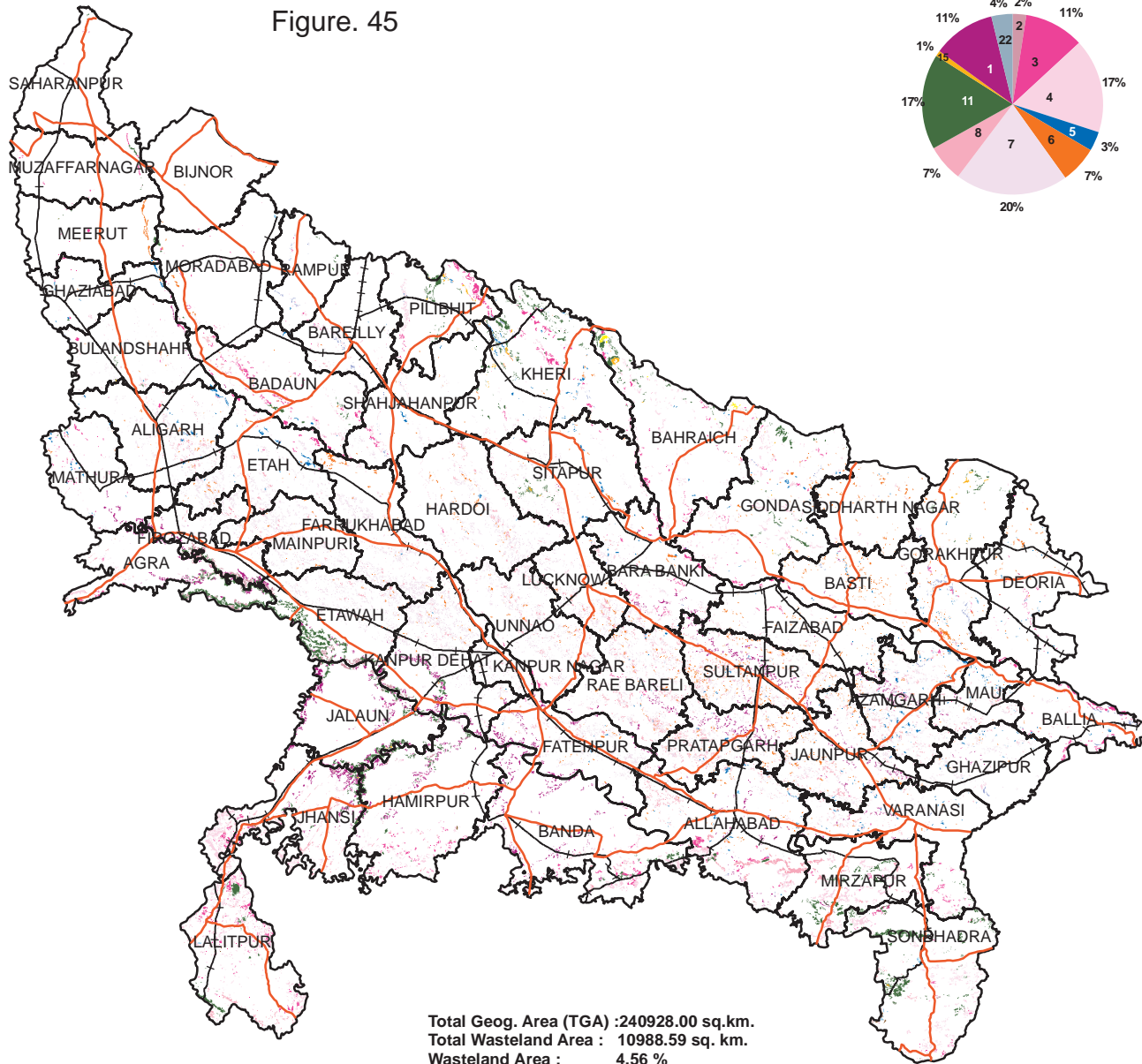
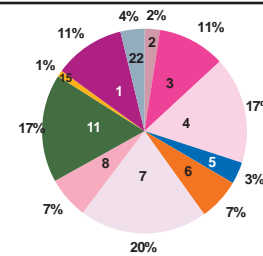
- | | | | | |
|--|--|--|----------------------------------|--------------------------------|
| 1. Gullied and/ or ravinous land (Medium) | 6. Waterlogged and Marshy land (Seasonal) | 11. Under-utilised/degraded forest (Scrub domin) | 16. Sands-Coastal | 21. Industrial wastelands |
| 2. Gullied and/ or ravinous land (Deep) | 7. Land affected by salinity/alkalinity (Medium) | 12. Under-utilised/degraded forest (Agriculture) | 17. Sands-Desertic | 22. Barren Rocky/Stony waste |
| 3. Land with Dense Scrub | 8. Land affected by salinity/alkalinity (Strong) | 13. Degraded pastures/ grazing land | 18. Sands-Semi Stab.-Stab>40m | 23. Snow covered /Glacial area |
| 4. Land with Open Scrub | 9. Shifting Cultivation - Current Jhum | 14. Degraded land under plantation crop | 19. Sands-Semi Stab.-Stab 15-40m | Total - Total Wasteland Area |
| 5. Waterlogged and Marshy land (Permanent) | 10. Shifting Cultivation - Abandoned Jhum | 15. Sands-Riverine | 20. Mining Wastelands | TGA - Total Geographical Area |

Figure. 45

WASTELAND MAP

2005-06

UTTAR PRADESH



Total Geog. Area (TGA) : 240928.00 sq.km.
Total Wasteland Area : 10988.59 sq. km.
Wasteland Area : 4.56 %

LEGEND

- Gullied/ Ravine land-Medium ravine (1)
- Gullied/Ravine land-Deep/ very deep ravine (2)
- Scrubland - Land with dense scrub (3)
- Scrubland - Land with open scrub (4)
- Waterlogged and marshy land - Permanent (5)
- Waterlogged and marshy land - Seasonal (6)
- Land Affected by Salinity/ Alkalinity - Moderate (7)
- Land Affected by Salinity/ Alkalinity - Strong (8)
- Shifting cultivation - Current jhum (9)
- Shifting cultivation - Abandoned jhum (10)
- Under-utilised Deg Notif Forest - Scrub Dom (11)
- Under- utilised Deg Notif Forest - Agriculture (12)
- Degraded Pastures/ grazing land (13)
- Degraded Land under Plantation Crop (14)
- Sands - Desert sand (15)
- Sands - Coastal sand (16)
- Sands - Riverine (17)
- Sands - Semi-stab to stab (>40m) dune (18)
- Sands-Semi-stab to stab mod high(15-40m) dune (19)
- Mining Wastelands (20)
- Industrial Wastelands (21)
- Barren rocky area (22)
- Snow cover and/ or glacial area (23)
- Non Wasteland Area
- Major Road
- Railway Line



Based on 3 season data of IRS P6
 LISS III (2005-06) & Limited ground checks

Partner Institution:

Remote Sensing Application Centre
 Uttar Pradesh
 Jankipuram
 Kursi Road
 Lucknow- 226021

Coordinated by:

Land Use Division, LRG, RS & GIS - AA
 National Remote Sensing Centre
 ISRO, Dept. of Space, Govt of India,
 Balanagar,
 Hyderabad - 500625

Table 63: Uttar Pradesh - Category-wise distribution and changes in wastelands

Area in sq.km.

SI	Wasteland Categories	2005-06	%	2003	%	Change	% diff
1	Gullied and/or ravinous land-Medium	1216.48	0.50	3014.18	1.25	-1797.70	-0.75
2	Gullied and/or ravinous land-Deep	264.63	0.11	238.60	0.10	26.03	0.01
3	Land with Dense Scrub	1160.19	0.48	3001.78	1.25	-1841.59	-0.76
4	Land with Open Scrub	1835.12	0.76	617.16	0.26	1217.96	0.51
5	Waterlogged and Marshy land-Permanent	376.54	0.16	884.28	0.37	-507.74	-0.21
6	Waterlogged and Marshy land-Seasonal	721.12	0.30	964.29	0.40	-243.17	-0.10
7	Land affected by salinity/alkalinity-Moderate	2193.28	0.91	3284.48	1.36	-1091.20	-0.45
8	Land affected by salinity/alkalinity-Strong	718.46	0.30	1558.01	0.65	-839.55	-0.35
9	Shifting cultivation area-Abandoned Jhum	0.00	0.00	20.35	0.01	-20.35	-0.01
10	Under utilised/degraded notified forest land-Scrub dominated	1857.31	0.77	1807.61	0.75	49.70	0.02
11	Under utilised/degraded notified forest land-Agriculture	64.61	0.03	358.76	0.15	-294.15	-0.12
12	Degraded pastures/grazing land	21.47	0.01	79.84	0.03	-58.37	-0.02
13	Degraded land under plantation Crops	3.48	0.00	13.31	0.01	-9.83	0.00
14	Sands-Riverine	109.92	0.05	630.82	0.26	-520.90	-0.22
15	Sands-Coastal	0.00	0.00	78.52	0.03	-78.52	-0.03
16	Mining wastelands	16.16	0.01	9.12	0.00	7.04	0.00
17	Industrial wastelands	18.07	0.01	31.94	0.01	-13.87	-0.01
18	Barren rocky area	411.75	0.17	391.11	0.16	20.64	0.01
	Total	10988.59	4.56	16984.16	7.05	-5995.57	-2.49
	TGA	240928.00					