

# DELHI

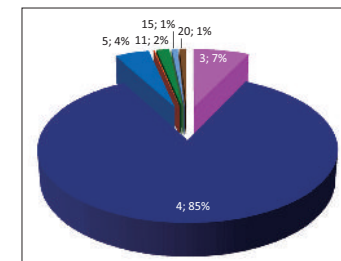
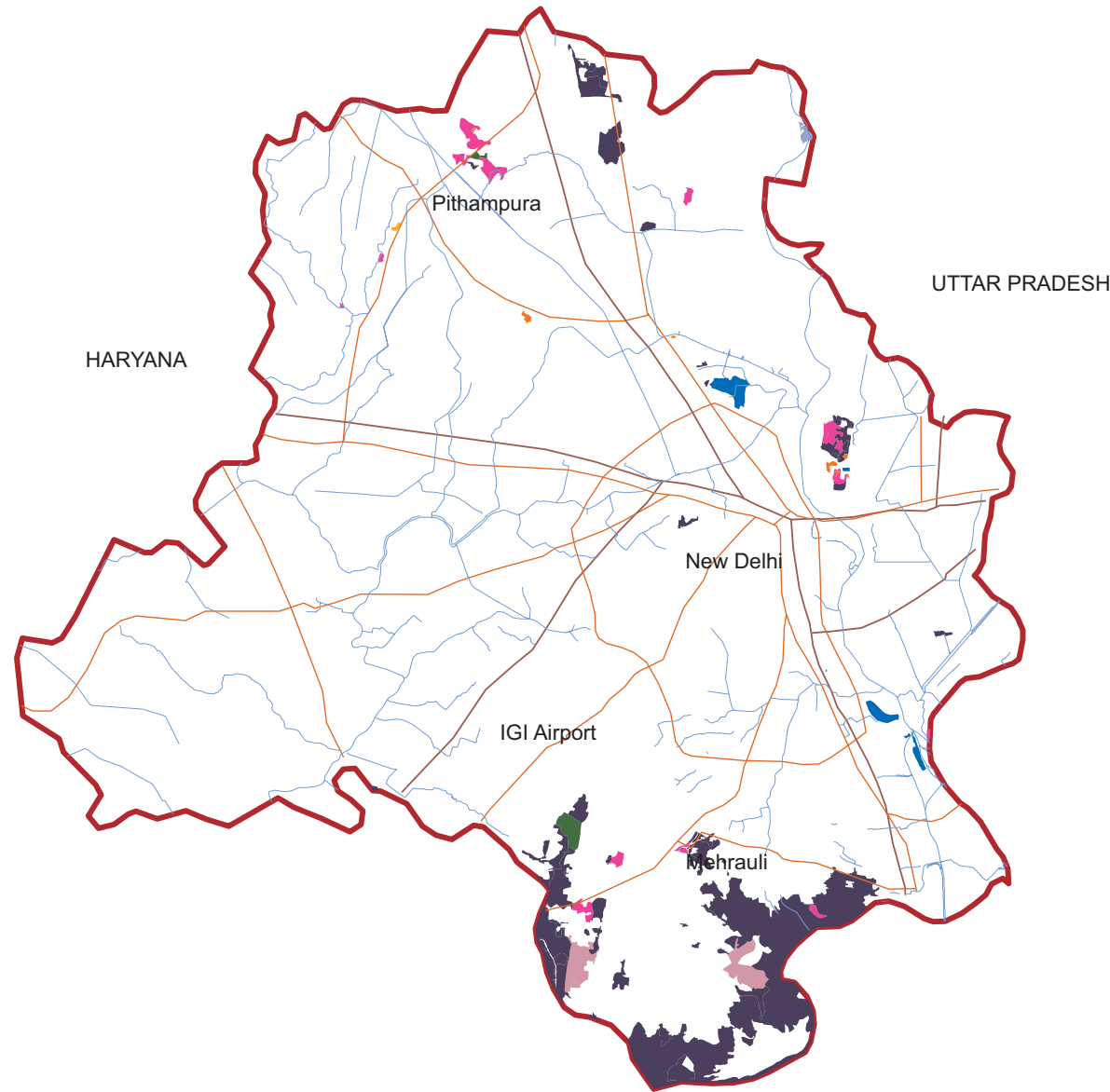
## Spatial Distribution of Wastelands

### 2015-16



#### Legend

- Gullied and/ or ravinous land (Medium)
- Gullied and/ or ravinous land (Deep)
- Land with Dense Scrub
- Land with Open Scrub
- Waterlogged and Marshy land (Permanent)
- Waterlogged and Marshy land (Seasonal)
- Land Affected by salinity / alkalinity (Moderate)
- Land Affected by salinity / alkalinity (Strong)
- Shifting Cultivation - Current Jhum
- Shifting Cultivation - Abandoned Jhum
- Under-utilised/degraded forest (Scrub domin)
- Under-utilised/degraded forest (Agriculture)
- Degraded pastures/grazing land
- Degraded land under plantation crop
- Sands - Riverine
- Sands - Coastal
- Sands - Desertic
- Sands - Semi Stab:- Stab > 40m
- Sands - Semi Stab:- Stab 15-40m
- Mining Wastelands
- Industrial Wastelands
- Barren Rocky Area
- Snow Covered/ Glacial Area
- Non Wasteland Area
- Water ways
- International Boundary
- State Boundary
- District Boundary
- Railways
- Major Roads



**Executed By** Land Use & Cover Monitoring Divn.  
LRUMG, Remote Sensing Application  
National Remote Sensing Centre  
ISRO, Dept. of Space, GOI  
Balanagar, Hyderabad - 500037

**Sponsored by** Dept. of Land Resources  
Min. of Rural Development  
G - Wing, Nirman Bhawan  
GOI, New Delhi - 110 011

Total Geog. Area (TGA): 1483.00 sq. km.  
Total wasteland area : 81.27 sq. km.  
Wasteland Percentage: 5.48

Source: Wasteland Maps: 2008-09 on 1:50,000 scale,  
Three seasons IRS P6 LISS-III data of Kharif (Oct/Nov-2015),  
Rabi (Jan/Feb-2016) and Zaid (April/May-2016) & Ground truth

### DELHI

#### Wastelands Area Change Matrix : 2008-09 and 2015-16

Area in sq.km

WL Categories	WL during 2008-09 remaining as WL in 2015-16							2008-09	
	3	4	5	9	10	11	12	Category Total	Grand Total
3	5.76							5.76	80.5
4		68.63						68.63	
5			3.42					3.42	
6		0.34	0.18	0.13				0.65	
11					1.33			1.33	
20							0.71	0.71	
999		0.14		0.01		0.62			
Category Total (2015-16)	5.76	69.11	3.60	0.14	1.33	0.62	0.71		
Grand Total (2015-16)	81.27								

WL Category	Reduction from 0809 to 1516		Increase from 0809 to 1516	
	Area	No of polygons	Area	No of polygons
3				
4			0.14	2
5				
6			0.01	1
11				
15			0.62	5
Total			0.77	8

Wastelands becoming Non-wastelands (-)

Non-wastelands becoming Wastelands (+)

NET Change (2015 - 16) - (2008 - 09) (-)

0.77

0.77

Green

Red

Blue

denotes Change from wasteland to non-wasteland

denotes change from non-wasteland to wastelands

denotes no change in the wasteland category

2008 - 09 Wastelands statistics are revised version.

Area under category total is rounded to nearest decimal.

#### Wasteland Classes

- Gullied and/ or ravinous land (Medium)
- Gullied and/ or ravinous land (Deep)
- Land with Dense Scrub
- Land with Open Scrub
- Waterlogged and Marshy land (Permanent)
- Waterlogged and Marshy land (Seasonal)
- Land affected by salinity/alkalinity (Medium)
- Land affected by salinity/alkalinity (Strong)

#### Wasteland Classes

- Shifting Cultivation - Current Jhum
- Shifting Cultivation - Abandoned Jhum
- Under-utilised/degraded forest (Scrub domin)
- Under-utilised/degraded forest (Agriculture)
- Degraded pastures/ grazing land
- Degraded land under plantation crop
- Sands-Riverine
- Sands-Coastal

#### Wasteland Classes

- Sands-Desertic
- Sands-Semi Stab.-Stab>40m
- Sands-Semi Stab.-Stab 15-40m
- Mining Wastelands
- Industrial wastelands
- Barren Rocky/Stony waste
- Snow covered /Glacial area
- Non-Wasteland Area

#### Non-Wasteland Classes

- Built-up
- Industrial Area
- Cropland
- Fallow Land
- Plantation
- Forest-Dense/Open
- Forest Plantation
- Grasslands
- Waterbodies

## Delhi

Wastelands Area Changes – 2008-09 and 2015-16

Area in sq.km

District	WL_Class	1	2	3	4	5	6	7	8	9	10	11
Delhi	2008-09	--	--	5.76	68.63	3.42	0.65	--	--	--	--	1.33
	2015-16	--	--	5.76	69.11	3.60	0.14	--	--	--	--	1.33
	Change	--	--	--	0.48	0.18	-0.51	--	--	--	--	--

Note: "--" Denotes this Class is not existing in the District / State

2008-09 Wastelands statistics are revised version.

## Delhi contd...

Wastelands Area Changes – 2008-09 and 2015-16

Area in sq.km

12	13	14	15	16	17	18	19	20	21	22	23	Total	TGA
--	--	--		--	--	--	--	0.71	--	--	--	80.50	1483
--	--	--	0.62	--	--	--	--	0.71	--	--	--	81.27	
--	--	--	0.62	--	--	--	--	--	--	--	--	0.77	

TGA - Total Geographical Area

1. Gullied and/ or ravinous land (Medium)	9. Shifting Cultivation - Current Jhum	17. Sands-Desertic
2. Gullied and/ or ravinous land (Deep)	10. Shifting Cultivation - Abandoned Jhum	18. Sands-Semi Stab.-Stab>40m
3. Land with Dense Scrub	11. Under-utilised/degraded forest (Scrub domin)	19. Sands-Semi Stab.-Stab 15-40m
4. Land with Open Scrub	12. Under-utilised/degraded forest (Agriculture)	20. Mining Wastelands
5. Waterlogged and Marshy land (Permanent)	13. Degraded pastures/ grazing land	21. Industrial wastelands
6. Waterlogged and Marshy land (Seasonal)	14. Degraded land under plantation crop	22. Barren Rocky/Stony waste
7. Land affected by salinity/alkalinity (Medium)	15. Sands-Riverine	23. Snow covered /Glacial area
8. Land affected by salinity/alkalinity (Strong)	16. Sands-Coastal	