

Salient Features

- Decrease in wastelands area by 804.18 sq. km.
- Decrease in **land with dense scrub** (299.50 sq. km.), **land with open scrub** (243.98 sq. km.) and **degraded forest** (127.51 sq. km.)
- 484.56 sq. km. of wasteland area converted into cropland, predominantly from **land with dense scrub** (139.99 sq. km.) and **land with open scrub** (243.51 sq. km)
- Nellore district witnessed decline in wastelands area by 282.86 sq. km. largely from **land with open & dense scrub** (196.71 sq. km.).
- Prakasam district witnessed decrease in wastelands area by 92.63 sq. km. primarily from **land with open & dense scrub**.

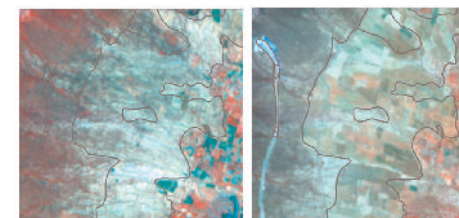
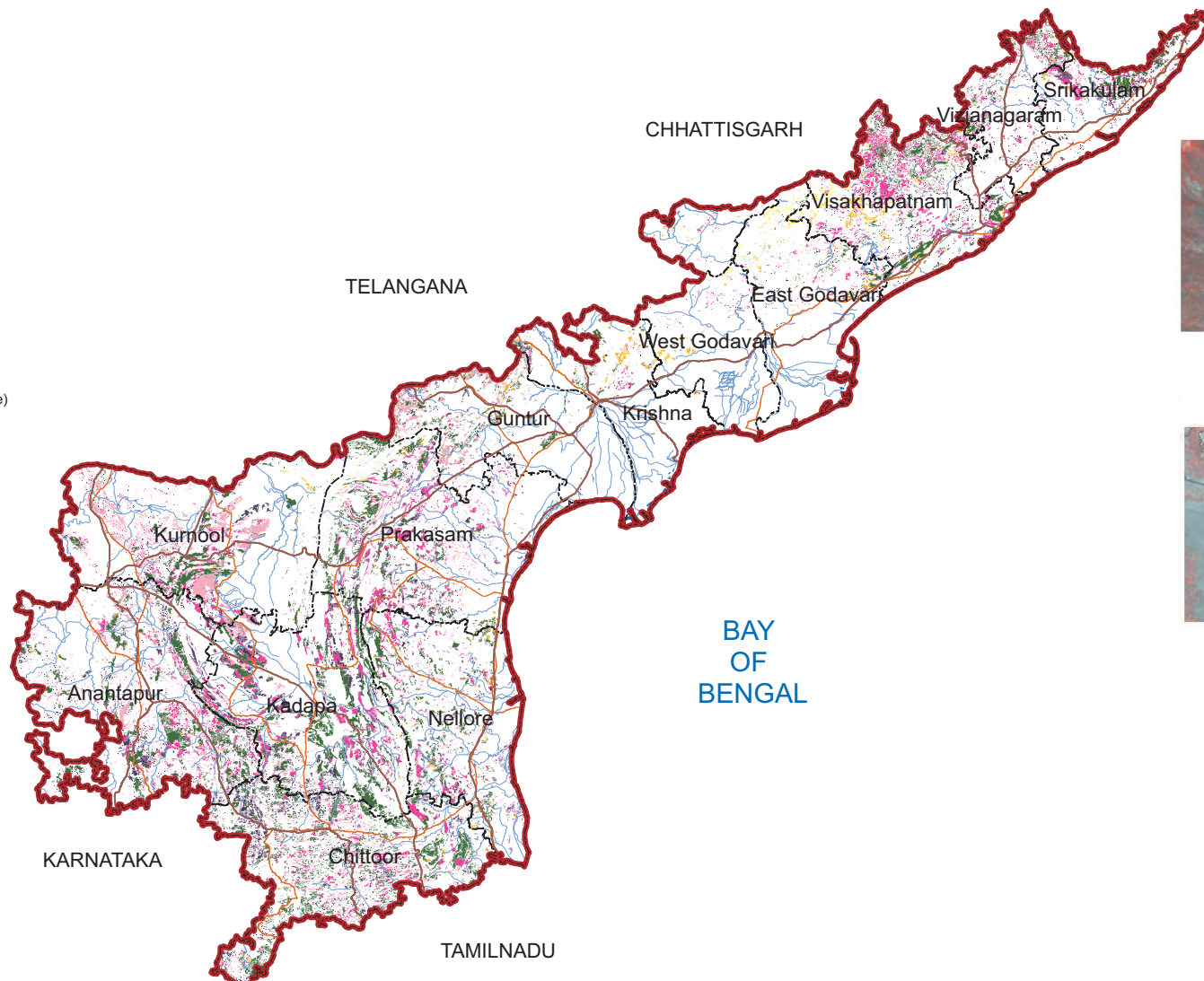
ANDHRA PRADESH

Spatial Distribution of Wastelands 2015-16

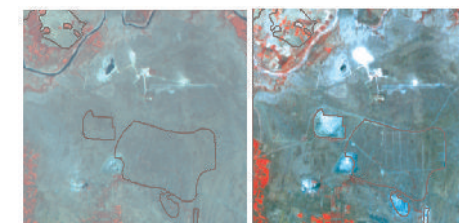


Legend

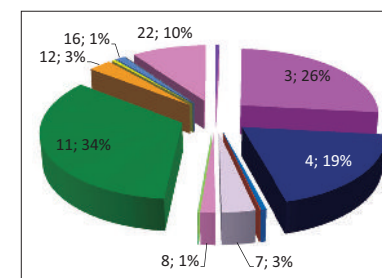
- Gullied and/ or ravinous land (Medium)
- Gullied and/ or ravinous land (Deep)
- Land with Dense Scrub
- Land with Open Scrub
- Waterlogged and Marshy land (Permanent)
- Waterlogged and Marshy land (Seasonal)
- Land Affected by salinity / alkalinity (Moderate)
- Land Affected by salinity / alkalinity (Strong)
- Shifting Cultivation - Current Jhum
- Shifting Cultivation - Abandoned Jhum
- Under-utilised/degraded forest (Scrub domin)
- Under-utilised/degraded forest (Agriculture)
- Degraded pastures/grazing land
- Degraded land under plantation crop
- Sands - Riverine
- Sands - Coastal
- Sands - Desertic
- Sands - Semi Stab:- Stab > 40m
- Sands - Semi Stab:- Stab 15-40m
- Mining Wastelands
- Industrial Wastelands
- Barren Rocky Area
- Snow Covered/ Glacial Area
- Non Wasteland Area
- Water ways
- District Boundary
- Railways
- Major Roads



Lat : 15°29'53.12"N Long : 79°14'37.368"E
District:Prakasham
08-09 : Open Scrub; 15-16 : Cropland



Lat : 16°51'44.989"N Long : 80°3'33.224"E
District:Krishna
08-09 : Degraded forest scrub; 15-16 : Built up



Partner Inst.
Andhra Pradesh State
Remote Sensing Centre
MG Road, Labbipet
Vijayawada - 520010

Executed By
Land Use & Cover Monitoring Divn.
LRUMG, Remote Sensing Application
National Remote Sensing Centre
ISRO, Dept. of Space, GOI
Balanagar, Hyderabad - 500037

Sponsored by
Dept. of Land Resources
Min. of Rural Development
G - Wing, Nirman Bhawan
GOI, New Delhi - 110 011

Total Geog. Area (TGA): 162989.00 sq. km.
Total wasteland area : 23981.74 sq. km.
Wasteland Percentage: 14.71

Source: Wasteland Maps: 2008-09 on 1:50,000 scale,
Three seasons IRS P6 LISS-III data of Kharif(Oct/Nov-2015),
Rabi (Jan/Feb-2016) and Zaid (April/May-2016) & Ground truth

ANDHRA PRADESH

Wastelands Area Change Matrix : 2008-09 and 2015-16

Area in sq.km

WL Categories	WL during 2008-09 remaining as WL in 2015-16																				WL 2008-09 becoming non WL in 2015-16						2008-09			
	1	2	3	4	5	6	7	8	9	10	11	12	13	14	15	16	17	20	21	22	24	25	26	27	28	29	32	Category Total	Grand Total	
1	115.08			18.25																	3.68		18.19	3.07	9.99		0.79	169.03	24785.92	
2		1.83		0.77																		0.29						2.89		
3			6286.90	32.69																	21.79	1.28	139.99	66.17	37.00		4.70	6590.52		
4				4502.10																	29.41	1.65	243.51	41.14	23.30		3.05	4844.16		
5					118.92																	0.49	0.59	0.06		26.92		146.97		
6						16.91																						16.91		
7			3.41	28.93			794.61	0.14											0.15		0.93		47.24	7.55	1.40		0.62	884.99		
8			0.27	13.95			5.58	349.62													0.49		6.02	0.22	0.11		0.60	376.86		
9									14.18	1.03																		15.21		
10										1.26																		1.26		
11											8174.40	121.07										4.34					2.10	8301.92		
12												610.69										0.26						610.95		
13													96.74															96.74		
14				1.43										12.98								1.84		2.22	0.73	7.39		26.58		
15				0.93											15.65								6.19					22.77		
16			0.45	0.69	0.67											255.08					0.05	0.19	20.22		12.93	1.58		291.87		
17																	1.95					0.11	1.42	0.32			3.80			
20				0.33														1.62				0.18						2.13		
21																							0.22					3.27		
22																						2368.95	8.15					2377.10		
999	0.64			0.10			0.08								6.75		0.92													
Category Total (2015-16)	115.72	1.83	6291.02	4600.17	119.59	16.91	800.27	349.76	14.18	2.29	8174.40	731.76	96.74	12.98	15.65	261.83	1.95	2.54	3.20	2368.95	71.34	3.62	484.56	120.36	92.44	28.50	11.86			
Grand Total (2015-16)	23981.74																													

WL Category	Reduction from 0809 to 1516		Increase from 0809 to 1516	
	Area	No of polygons	Area	No of polygons
1	35.71	219	0.64	1
2	0.29	1		
3	270.93	1530		
4	342.05	1755	0.10	1
5	28.05	62		
6				
7	57.74	636	0.08	1
8	7.44	62		
9				
10				
11	6.44	32		
12	0.26	1		
13				
14	12.17	69		
15	6.19	62		
16	34.97	172	6.75	99
17	1.85	10		
20	0.18	6	0.92	9
21	0.22	2		
22	8.15	136		
Total	812.67	4755	8.49	111

Wastelands becoming Non-wastelands (-) **812.67** **Green** denotes Change from wasteland to non-wasteland
 Non-wastelands becoming Wastelands (+) **8.49** **Red** denotes change from non-wasteland to wastelands
 NET Change (2015 - 16) - (2008 - 09) (-) **804.18** **Blue** denotes no change in the wasteland category
 2008 - 09 Wastelands statistics are revised version.
 Area under category total is rounded to nearest decimal.

Wasteland Classes	Non-Wasteland Classes
1. Gullied and/ or ravinous land (Medium)	17. Sands-Desertic
2. Gullied and/ or ravinous land (Deep)	18. Sands-Semi Stab.-Stab>40m
3. Land with Dense Scrub	19. Sands-Semi Stab.-Stab 15-40m
4. Land with Open Scrub	20. Mining Wastelands
5. Waterlogged and Marshy land (Permanent)	21. Industrial wastelands
6. Waterlogged and Marshy land (Seasonal)	22. Barren Rocky/Stony waste
7. Land affected by salinity/alkalinity (Medium)	23. Snow covered /Glacial area
8. Land affected by salinity/alkalinity (Strong)	24. Built-up
9. Shifting Cultivation - Current Jhum	25. Industrial Area
10. Shifting Cultivation - Abandoned Jhum	26. Cropland
11. Under-utilised/degraded forest (Scrub domin)	27. Fallow Land
12. Under-utilised/degraded forest (Agriculture)	28. Plantation
13. Degraded pastures/ grazing land	29. Forest-Dense/Open
14. Degraded land under plantation crop	30. Forest Plantation
15. Sands-Riverine	31. Grasslands
16. Sands-Coastal	32. Waterbodies
	999. Non-Wasteland Area

Andhra Pradesh

Wastelands Area Changes – 2008-09 and 2015-16

District	WL_Class	1	2	3	4	5	6	7	8	9	10	11
Anantapur	2008-09	0.56	--	737.75	737.34	--	--	224.15	79.96	--	--	1228.08
	2015-16	0.56	--	727.50	723.63	--	--	217.99	78.92	--	--	1222.34
	Change	0.00	--	-10.25	-13.71	--	--	-6.16	-1.04	--	--	-5.74
Chittoor	2008-09	10.91	--	836.31	758.75	--	--	64.85	12.16	--	--	1346.62
	2015-16	5.09	--	798.60	733.99	--	--	48.08	9.60	--	--	1332.71
	Change	-5.82	--	-37.71	-24.76	--	--	-16.77	-2.56	--	--	-13.91
East Godavari	2008-09	13.11	--	136.39	29.41	30.36	--	--	--	14.94	1.12	155.98
	2015-16	0.72	--	110.58	21.88	12.96	--	--	--	13.91	2.15	144.20
	Change	-12.39	--	-25.82	-7.53	-17.39	--	--	--	-1.03	1.03	-11.78
Guntur	2008-09	--	--	102.71	195.37	9.10	--	4.88	18.03	--	--	337.24
	2015-16	--	--	92.53	184.78	9.10	--	7.44	15.09	--	--	334.84
	Change	--	--	-10.18	-10.59	0.00	--	2.55	-2.94	--	--	-2.39
Krishna	2008-09	--	--	77.39	41.39	94.62	5.57	0.95	--	--	--	146.81
	2015-16	--	--	60.45	45.00	85.29	5.57	0.95	--	--	--	136.17
	Change	--	--	-16.93	3.61	-9.33	0.00	0.00	--	--	--	-10.64
Kurnool	2008-09	11.15	--	525.33	287.94	--	--	211.80	93.53	--	--	669.68
	2015-16	11.17	--	505.57	279.01	--	--	198.70	92.02	--	--	667.86
	Change	0.02	--	-19.77	-8.93	--	--	-13.09	-1.51	--	--	-1.82
Nellore	2008-09	17.42	--	527.64	396.60	0.49	3.43	225.75	55.79	--	--	759.51
	2015-16	13.18	--	440.53	286.99	--	3.43	187.31	42.25	--	--	702.16
	Change	-4.24	--	-87.10	-109.61	-0.49	0.00	-38.45	-13.54	--	--	-57.35
Prakasam	2008-09	23.99	--	912.53	586.74	4.85	--	134.58	112.38	--	--	920.69
	2015-16	23.42	--	876.57	554.81	4.85	--	122.40	107.04	--	--	902.93
	Change	-0.57	--	-35.96	-31.93	0.00	--	-12.18	-5.34	--	--	-17.76
Srikakulam	2008-09	9.33	--	272.11	171.83	6.45	7.69	--	--	0.04	--	297.44
	2015-16	5.56	--	269.97	172.23	6.45	7.69	--	--	0.04	--	295.41
	Change	-3.77	--	-2.14	0.40	0.00	0.00	--	--	0.00	--	-2.03
Visakhapatnam	2008-09	54.54	2.89	1051.96	344.22	0.42	0.21	--	--	0.08	0.14	652.64
	2015-16	32.96	1.83	1034.54	358.14	0.42	0.21	--	--	0.08	0.14	652.64
	Change	-21.57	-1.06	-17.42	13.92	0.00	0.00	--	--	0.00	0.00	0.00
Vizianagaram	2008-09	21.64	--	299.14	81.58	--	--	--	--	0.02	--	303.99
	2015-16	18.83	--	295.55	79.38	--	--	--	--	0.02	--	302.00
	Change	-2.81	--	-3.59	-2.21	--	--	--	--	0.00	--	-2.00
West Godavari	2008-09	3.58	--	37.10	5.89	0.68	--	--	--	0.13	--	2.69
	2015-16	1.45	--	28.18	6.37	0.51	--	--	--	0.13	--	2.69
	Change	-2.13	--	-8.92	0.48	-0.17	--	--	--	0.00	--	0.00
Kadapa	2008-09	2.81	--	1074.16	1207.08	--	--	18.01	5.00	--	--	1480.55
	2015-16	2.79	--	1050.45	1153.96	--	--	17.40	4.84	--	--	1478.46
	Change	-0.02	--	-23.70	-53.12	--	--	-0.62	-0.16	--	--	-2.09
Grand Total	2008-09	169.03	2.89	6590.52	4844.16	146.97	16.91	884.99	376.86	15.21	1.26	8301.92
	2015-16	115.72	1.83	6291.02	4600.17	119.59	16.91	800.27	349.76	14.18	2.29	8174.40
	Change	-53.31	-1.06	-299.50	-243.98	-27.38	0.00	-84.72	-27.09	-1.03	1.03	-127.51

Note: "--" Denotes this Class is not existing in the District / State

2008-09 Wastelands statistics are revised version.

- | | |
|--|--|
| 1. Gullied and/ or ravine land (Medium) | 7. Land affected by salinity/alkalinity (Medium) |
| 2. Gullied and/ or ravine land (Deep) | 8. Land affected by salinity/alkalinity (Strong) |
| 3. Land with Dense Scrub | 9. Shifting Cultivation - Current Jhum |
| 4. Land with Open Scrub | 10. Shifting Cultivation - Abandoned Jhum |
| 5. Waterlogged and Marshy land (Permanent) | 11. Under-utilised/degraded forest (Scrub domin) |
| 6. Waterlogged and Marshy land (Seasonal) | 12. Under-utilised/degraded forest (Agriculture) |

Area in sq.km

12	13	14	15	16	17	18	19	20	21	22	23	Total	TGA	
6.43	--	--	5.34	--	--	0.27	--	464.84	--	3484.73	19130	3484.73	19130	
11.99	--	--	4.76	--	--	0.27	0.15	460.34	--	3448.46		3448.46		
5.56	--	--	-0.58	--	--	0.00	0.15	-4.49	--	-36.27		-36.27		
22.18	--	--	--	--	--	0.91	--	255.93	--	3308.63	15152	3308.63	15151	
36.05	--	--	--	--	--	1.82	--	254.84	--	3220.79		3220.79		
13.86	--	--	--	--	--	0.92	--	-1.09	--	-87.84		-87.84		
46.31	37.84	12.40	--	30.63	--	0.11	--	4.71	--	513.33	12826	513.33	12805	
58.10	37.84	3.82	--	27.27	--	--	--	4.71	--	438.14	12805	438.14		
11.78	0.00	-8.58	--	-3.36	--	-0.11	--	0.00	--	-75.19	0	-75.19		
58.83	--	--	--	9.94	--	--	1.56	487.79	--	1225.46	11391	1225.46	11391	
61.22	--	--	--	9.86	--	--	1.56	487.79	--	1204.22	11391	1204.22		
2.39	--	--	--	-0.08	--	--	0.00	0.00	--	-21.24	0	-21.24		
86.67	--	6.39	0.23	20.89	--	--	--	1.05	--	481.97	8727	481.97	8727	
93.20	--	4.17	0.23	20.76	--	--	--	0.92	--	452.73	8727	452.73		
6.52	--	-2.22	0.00	-0.12	--	--	--	-0.12	--	-29.24	0	-29.24		
31.88	--	--	--	--	--	--	--	729.72	--	2561.03	17658	2561.03	17658	
33.70	--	--	--	--	--	--	--	729.10	--	2517.13		2517.13		
1.82	--	--	--	--	--	--	--	-0.62	--	-43.90		-43.90		
22.41	--	--	15.85	151.48	0.11	0.13	--	7.60	--	2184.20	13076	2184.20	13076	
79.77	--	--	9.30	128.95	--	--	--	7.47	--	1901.34	13076	1901.34		
57.35	--	--	-6.54	-22.53	-0.11	-0.13	--	-0.12	--	-282.86	0	-282.86		
37.82	--	1.55	0.06	32.15	3.69	--	--	117.56	--	2888.60	17626	2888.60	17626	
53.48	--	0.42	0.06	30.48	1.95	--	--	117.56	--	2795.98	17626	2795.98		
15.66	--	-1.13	0.00	-1.67	-1.74	--	--	0.00	--	-92.63	0	-92.63		
30.46	--	5.82	--	22.98	--	--	--	6.32	--	830.47	5837	830.47	5837	
32.50	--	4.15	--	20.72	--	--	--	6.13	--	820.84	5837	820.84		
2.03	--	-1.68	--	-2.25	--	--	--	-0.19	--	-9.63	0	-9.63		
195.19	52.54	0.42	--	18.48	--	--	1.15	9.34	--	2384.23	11161	2384.23	11161	
195.19	52.54	0.42	--	18.48	--	--	1.15	9.07	--	2357.83	11161	2357.83		
0.00	0.00	0.00	--	0.00	--	--	0.00	-0.27	--	-26.40	0	-26.40		
20.08	--	--	--	2.21	--	--	0.55	17.80	--	747.02	6539	747.02	6539	
22.07	--	--	--	2.21	--	--	0.34	16.85	--	737.25	6539	737.25		
2.00	--	--	--	0.00	--	--	-0.22	-0.95	--	-9.78	0	-9.78		
44.72	6.35	--	0.07	3.12	--	0.44	--	0.28	--	105.04	8507	105.04	8507	
44.46	6.35	--	0.07	3.09	--	0.17	--	0.28	--	93.74	8507	93.74		
-0.26	0.00	--	0.00	-0.02	--	-0.27	--	0.00	--	-11.30	0	-11.30		
7.94	--	--	1.22	--	--	0.27	--	274.16	--	4071.22	15359	4071.22	15359	
10.03	--	--	1.22	--	--	0.27	--	273.87	--	3993.30	15359	3993.30		
2.09	--	--	0.00	--	--	0.00	--	-0.29	--	-77.91	0	-77.91		
610.95	96.74	26.58	22.77	291.87	3.80	2.13	3.27	2377.10	--	24785.92	162989	24785.92	162989	
731.76	96.74	12.98	15.65	261.83	1.95	2.54	3.20	2368.95	--	23981.74		23981.74		
120.81	0.00	-13.60	-7.12	-30.04	-1.85	0.41	-0.07	-8.15	--	-804.18		-804.18		

TGA - Total Geographical Area

13. Degraded pastures/ grazing land	19. Sands-Semi Stab.-Stab 15-40m
14. Degraded land under plantation crop	20. Mining Wastelands
15. Sands-Riverine	21. Industrial wastelands
16. Sands-Coastal	22. Barren Rocky/Stony waste
17. Sands-Desertic	23. Snow covered /Glacial area
18. Sands-Semi Stab.-Stab>40m	