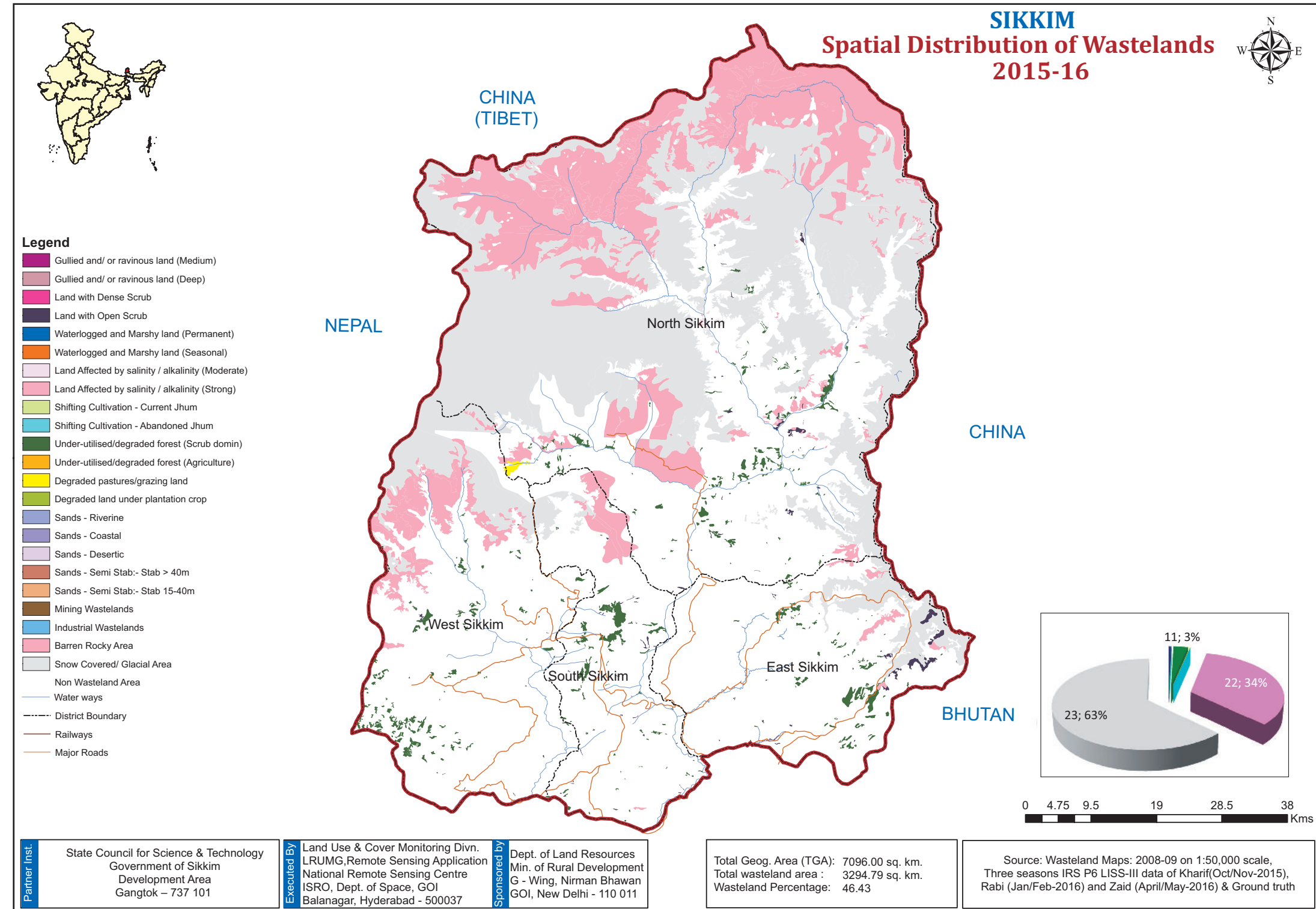


Salient Features

- Increase of wastelands area by **69.70 sq. km.**
- **Maximum** decrease in snow covered area by 274.21 sq. km.;
- Increase in barren rocky area by 313.17 sq. km.
- 4.40 sq. km. of area converted into forest dense/open during this period.
- North Sikkim district has an increase in wastelands area by 36.64 sq. km. and barren rocky area increased by 418.37 sq. km.
- East Sikkim district has an increased wasteland area by 16.08 sq. km. and snow cover by 101.01 sq. km.
- All four districts have increased area under wastelands from 2008-09 to 2015-16



SIKKIM

Wastelands Area Change Matrix : 2008-09 and 2015-16

Area in Sq.km

WL Categories	WL during 2008-09 remaining as WL in 2015-16					WL 2008-09 becoming non WL in 2015-16	2008-09	
	4	11	13	22	23	29	Category Total	Grand Total
4	16.24				2.42		18.67	3225.09
11		57.01			1.68	0.29	58.98	
13			3.10				3.10	
22				669.21	134.53		803.74	
23				445.63	1890.85	4.11	2340.59	
999	0.05	35.09		2.07	36.89			
Category Total (2015-16)	16.30	92.09	3.10	1116.92	2066.38	4.40		
Grand Total (2015-16)	3294.79							

WL Category	Reduction from 0809 to 1516		Increase from 0809 to 1516	
	Area	No of polygons	Area	No of polygons
4			0.05	2
11	0.29	3	35.09	164
13				
22			2.07	1
23	4.11	2	36.89	19
Total	4.41	5	74.10	212

Wastelands becoming Non-wastelands (-) 4.41
 Non-wastelands becoming Wastelands (+) 74.10
 NET Change (2015 - 16) - (2008 - 09) (+) 69.70

Green denotes Change from wasteland to non-wasteland
Red denotes change from non-wasteland to wastelands
Blue denotes no change in the wasteland category
 2008 - 09 Wastelands statistics are revised version.
 Area under category total is rounded to nearest decimal.

Wasteland Classes				Non-Wasteland Classes			
1. Gullied and/ or ravinous land (Medium)	9. Shifting Cultivation - Current Jhum	17. Sands-Desertic	24. Built-up	2. Gullied and/ or ravinous land (Deep)	10. Shifting Cultivation - Abandoned Jhum	18. Sands-Semi Stab.-Stab>40m	25. Industrial Area
3. Land with Dense Scrub	11. Under-utilised/degraded forest (Scrub domin)	19. Sands-Semi Stab.-Stab 15-40m	26. Cropland	4. Land with Open Scrub	12. Under-utilised/degraded forest (Agriculture)	20. Mining Wastelands	27. Fallow Land
5. Waterlogged and Marshy land (Permanent)	13. Degraded pastures/ grazing land	21. Industrial wastelands	28. Plantation	6. Waterlogged and Marshy land (Seasonal)	14. Degraded land under plantation crop	22. Barren Rocky/Stony waste	29. Forest-Dense/Open
7. Land affected by salinity/alkalinity (Medium)	15. Sands-Riverine	23. Snow covered /Glacial area	30. Forest Plantation	8. Land affected by salinity/alkalinity (Strong)	16. Sands-Coastal	999. Non-Wasteland Area	31. Grasslands
			32. Waterbodies				

Sikkim

Wastelands Area Changes – 2008-09 and 2015-16

District	WL_Class	1	2	3	4	5	6	7	8	9	10	11	12	13
East Sikkim	2008-09	--	--	--	9.11	--	--	--	--	--	--	4.19	--	--
	2015-16	--	--	--	9.14	--	--	--	--	--	--	18.10	--	--
	Change	--	--	--	0.03	--	--	--	--	--	--	13.91	--	--
North Sikkim	2008-09	--	--	--	7.35	--	--	--	--	--	--	24.63	--	3.10
	2015-16	--	--	--	4.95	--	--	--	--	--	--	28.93	--	3.10
	Change	--	--	--	-2.40	--	--	--	--	--	--	4.30	--	0.00
South Sikkim	2008-09	--	--	--	1.72	--	--	--	--	--	--	15.84	--	--
	2015-16	--	--	--	1.72	--	--	--	--	--	--	21.58	--	--
	Change	--	--	--	0.00	--	--	--	--	--	--	5.74	--	--
West Sikkim	2008-09	--	--	--	0.49	--	--	--	--	--	--	14.32	--	--
	2015-16	--	--	--	0.49	--	--	--	--	--	--	23.49	--	--
	Change	--	--	--	0.00	--	--	--	--	--	--	9.17	--	--
Grand Total	2008-09	--	--	--	18.67	--	--	--	--	--	--	58.98	--	--
	2015-16	--	--	--	16.30	--	--	--	--	--	--	92.09	--	--
	Change	--	--	--	-2.37	--	--	--	--	--	--	33.11	--	--

Sikkim contd...

Wastelands Area Changes – 2008-09 and 2015-16

Area in sq.km

District	WL_Class	14	15	16	17	18	19	20	21	22	23	Total	TGA
East Sikkim	2008-09	--	--	--	--	--	--	--	--	109.43	2.19	124.92	954
	2015-16	--	--	--	--	--	--	--	--	10.56	103.20	141.00	
	Change	--	--	--	--	--	--	--	--	--	-98.87	101.01	
North Sikkim	2008-09	--	--	--	--	--	--	--	--	546.70	2202.32	2784.10	4226
	2015-16	--	--	--	--	--	--	--	--	965.07	1818.69	2820.74	
	Change	--	--	--	--	--	--	--	--	--	418.37	-383.63	
South Sikkim	2008-09	--	--	--	--	--	--	--	--	14.21	29.31	61.07	750
	2015-16	--	--	--	--	--	--	--	--	14.21	29.31	66.81	
	Change	--	--	--	--	--	--	--	--	--	0.00	0.00	
West Sikkim	2008-09	--	--	--	--	--	--	--	--	133.41	106.78	255.00	1166
	2015-16	--	--	--	--	--	--	--	--	127.08	115.18	266.24	
	Change	--	--	--	--	--	--	--	--	--	-6.33	8.40	
Grand Total	2008-09	--	--	--	--	--	--	--	--	803.74	2340.59	3225.09	7096
	2015-16	--	--	--	--	--	--	--	--	1116.92	2066.38	3294.79	
	Change	--	--	--	--	--	--	--	--	--	313.17	-274.21	

Note: "--" Denotes this Class is not existing in the District / State
TGA - Total Geographical Area

2008-09 Wastelands statistics are revised version.

1. Gullied and/ or ravinous land (Medium)	9. Shifting Cultivation - Current Jhum	17. Sands-Desertic
2. Gullied and/ or ravinous land (Deep)	10. Shifting Cultivation - Abandoned Jhum	18. Sands-Semi Stab.-Stab>40m
3. Land with Dense Scrub	11. Under-utilised/degraded forest (Scrub domin)	19. Sands-Semi Stab.-Stab 15-40m
4. Land with Open Scrub	12. Under-utilised/degraded forest (Agriculture)	20. Mining Wastelands
5. Waterlogged and Marshy land (Permanent)	13. Degraded pastures/ grazing land	21. Industrial wastelands
6. Waterlogged and Marshy land (Seasonal)	14. Degraded land under plantation crop	22. Barren Rocky/Stony waste
7. Land affected by salinity/alkalinity (Medium)	15. Sands-Riverine	23. Snow covered /Glacial area
8. Land affected by salinity/alkalinity (Strong)	16. Sands-Coastal	