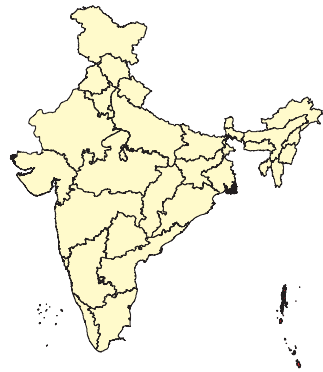
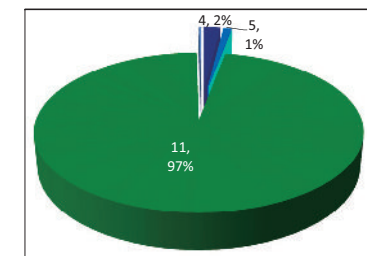
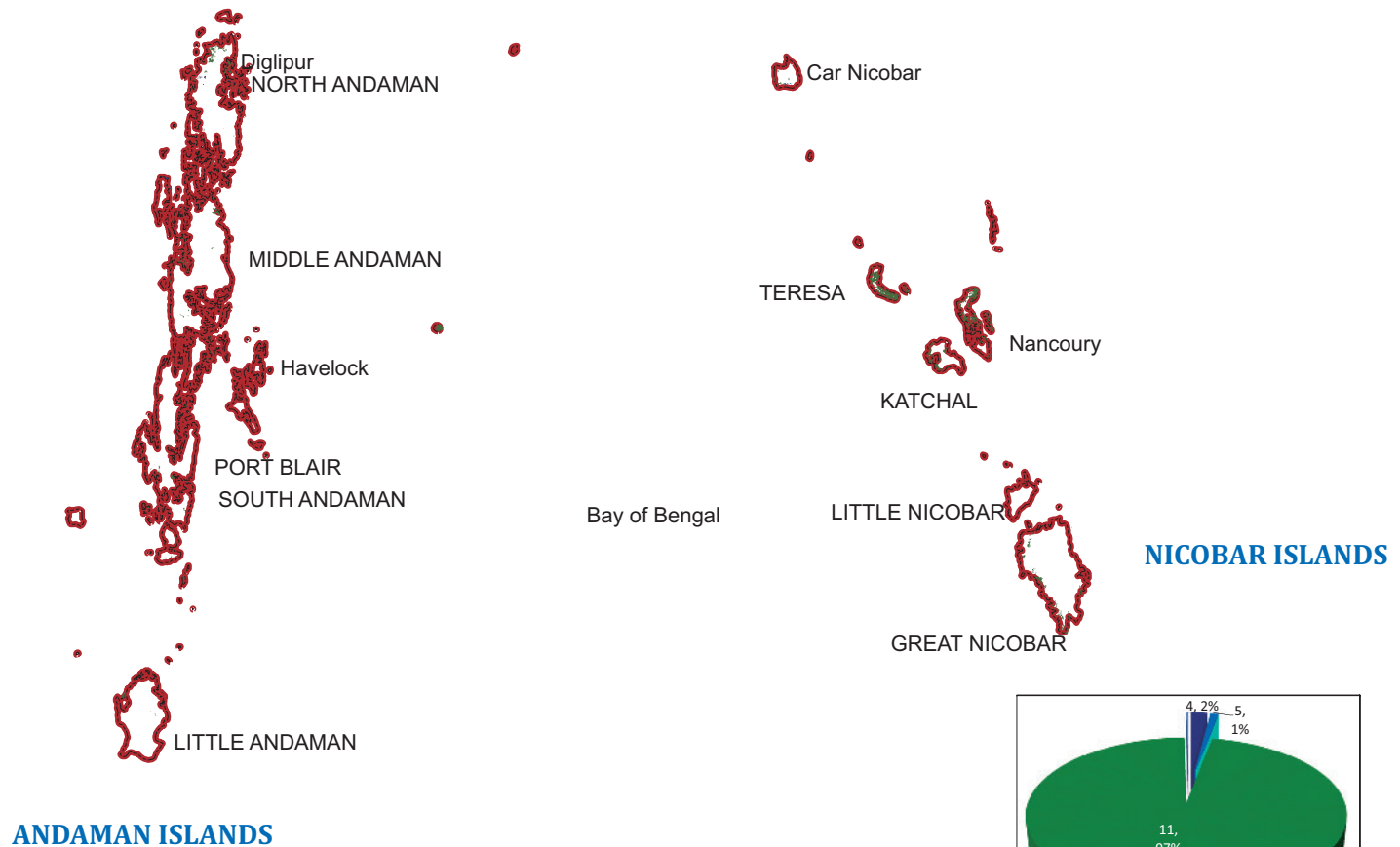


ANDAMAN & NICOBAR ISLANDS Spatial Distribution of Watelands 2015-16



Legend

- Gullied and/ or ravinous land (Medium)
- Gullied and/ or ravinous land (Deep)
- Land with Dense Scrub
- Land with Open Scrub
- Waterlogged and Marshy land (Permanent)
- Waterlogged and Marshy land (Seasonal)
- Land Affected by salinity / alkalinity (Moderate)
- Land Affected by salinity / alkalinity (Strong)
- Shifting Cultivation - Current Jhum
- Shifting Cultivation - Abandoned Jhum
- Under-utilised/degraded forest (Scrub domin)
- Under-utilised/degraded forest (Agriculture)
- Degraded pastures/grazing land
- Degraded land under plantation crop
- Sands - Riverine
- Sands - Coastal
- Sands - Desertic
- Sands - Semi Stab:- Stab > 40m
- Sands - Semi Stab:- Stab 15-40m
- Mining Wastelands
- Industrial Wastelands
- Barren Rocky Area
- Snow Covered/ Glacial Area
- Non Wasteland Area
- Water ways
- District Boundary
- Railways
- Major Roads



Executed By Land Use & Cover Monitoring Division
LRUM Group, RSA Area
National Remote Sensing Centre
ISRO, Dept. of Space, GOI
Balanagar, Hyderabad - 500037

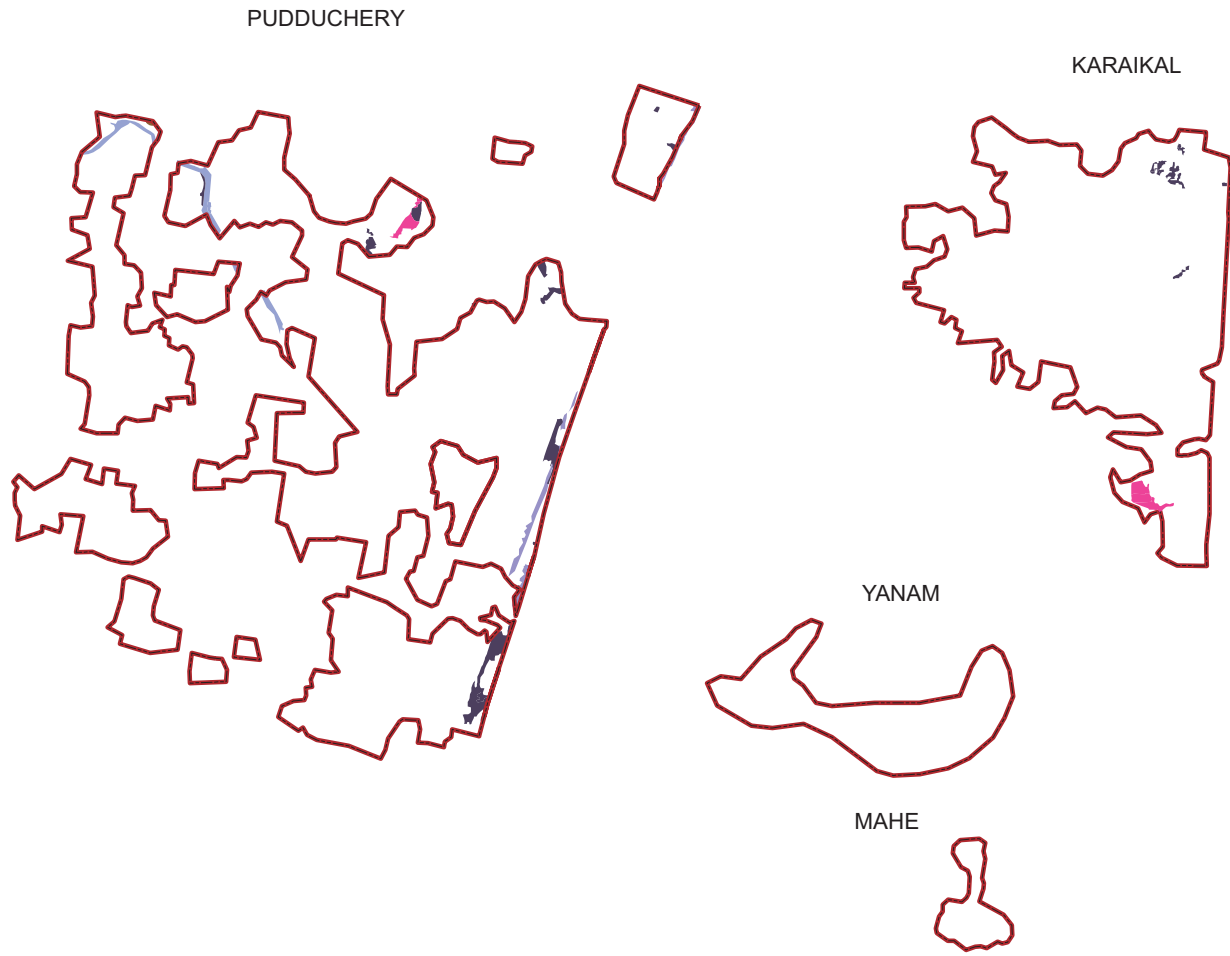
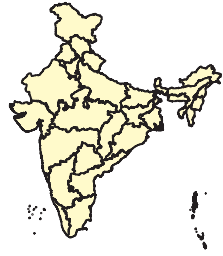
Sponsored by Dept. of Land Resources
Min. of Rural Development
G - Wing, Nirman Bhawan
GOI, New Delhi - 110 011

Total Geog. Area (TGA): 8249.00 sq. km.
Total wasteland area : 244.82 sq. km.
Wasteland Percentage: 2.96

Source: Wasteland Maps: 2008-09 on 1:50,000 scale,
Three season IRS P6 LISS-III data of Kharif (Oct/Nov-2015),
Rabi (Jan/Feb-2016) and Zaid (April/May-2016) & Ground Truth

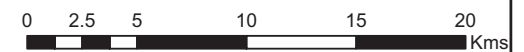
PUDUCHERRY

Spatial Distribution of Watelands 2015-16



Legend

- Gullied and/ or ravinous land (Medium)
- Gullied and/ or ravinous land (Deep)
- Land with Dense Scrub
- Land with Open Scrub
- Waterlogged and Marshy land (Permanent)
- Waterlogged and Marshy land (Seasonal)
- Land Affected by salinity / alkalinity (Moderate)
- Land Affected by salinity / alkalinity (Strong)
- Shifting Cultivation - Current Jhum
- Shifting Cultivation - Abandoned Jhum
- Under-utilised/degraded forest (Scrub domin)
- Under-utilised/degraded forest (Agriculture)
- Degraded pastures/grazing land
- Degraded land under plantation crop
- Sands - Riverine
- Sands - Coastal
- Sands - Desertic
- Sands - Semi Stab:- Stab > 40m
- Sands - Semi Stab:- Stab 15-40m
- Mining Wastelands
- Industrial Wastelands
- Barren Rocky Area
- Snow Covered/ Glacial Area
- Non Wasteland Area
- Water ways
- District Boundary
- Railways
- Major Roads



<p>Executed By Land Use & Cover Monitoring Divn. LRUMG, Remote Sensing Application National Remote Sensing Centre ISRO, Dept. of Space, GOI Balanagar, Hyderabad - 500037</p>	<p>Sponsored by Dept. of Land Resources Min. of Rural Development G - Wing, Nirman Bhawan GOI, New Delhi - 110 011</p>
--	---

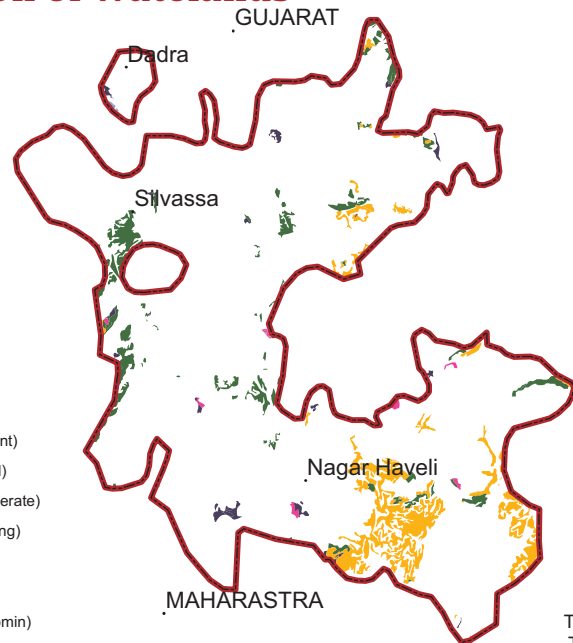
Total Geog. Area (TGA): 1483.00 sq. km.
 Total wasteland area : 81.27 sq. km.
 Wasteland Percentage: 5.48

Source: Wasteland Maps: 2008-09 on 1:50,000 scale,
 Three seasons IRS P6 LISS-III data of Kharif(Oct/Nov-2015),
 Rabi (Jan/Feb-2016) and Zaid (April/May-2016) & Ground truth

DADRA & NAGAR HAVELI

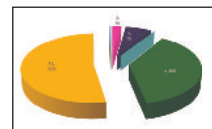
Spatial Distribution of Watelands

2015-16



Legend

- Gullied and/ or ravinous land (Medium)
- Gullied and/ or ravinous land (Deep)
- Land with Dense Scrub
- Land with Open Scrub
- Waterlogged and Marshy land (Permanent)
- Waterlogged and Marshy land (Seasonal)
- Land Affected by salinity / alkalinity (Moderate)
- Land Affected by salinity / alkalinity (Strong)
- Shifting Cultivation - Current Jhum
- Shifting Cultivation - Abandoned Jhum
- Under-utilised/degraded forest (Scrub domin)
- Under-utilised/degraded forest (Agriculture)
- Degraded pastures/grazing land
- Degraded land under plantation crop
- Sands - Riverine
- Sands - Coastal
- Sands - Desertic
- Sands - Semi Stab:- Stab > 40m
- Sands - Semi Stab:- Stab 15-40m
- Mining Wastelands
- Industrial Wastelands
- Barren Rocky Area
- Snow Covered/ Glacial Area
- Non Wasteland Area
- Water ways
- International Boundary
- State Boundary
- District Boundary
- Railways
- Major Roads

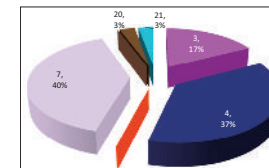


Total Geog. Area (TGA): 491 sq.km
 Total wasteland area: 52.33 sq.km
 Wasteland percentage: 10.65

DAMAN & DIU

Spatial Distribution of Watelands

2015-16



Total Geog. Area (TGA): 112 sq.km
 Total wasteland area: 7.785 sq.km
 Wasteland percentage: 6.95

LAKSHADWEEP

Spatial Distribution of Watelands

2015-16



Total Geog. Area (TGA): 32 sq.km
 Total wasteland area: 0.6 sq.km
 Wasteland percentage: 1.87



Executed By Land Use & Cover Monitoring Divn.
 LRUMG, Remote Sensing Application
 National Remote Sensing Centre
 ISRO, Dept. of Space, GOI
 Balanagar, Hyderabad - 500037

Sponsored by Dept. of Land Resources
 Min. of Rural Development
 G - Wing, Nirman Bhawan
 GOI, New Delhi - 110 011

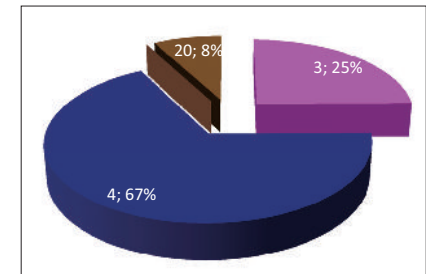
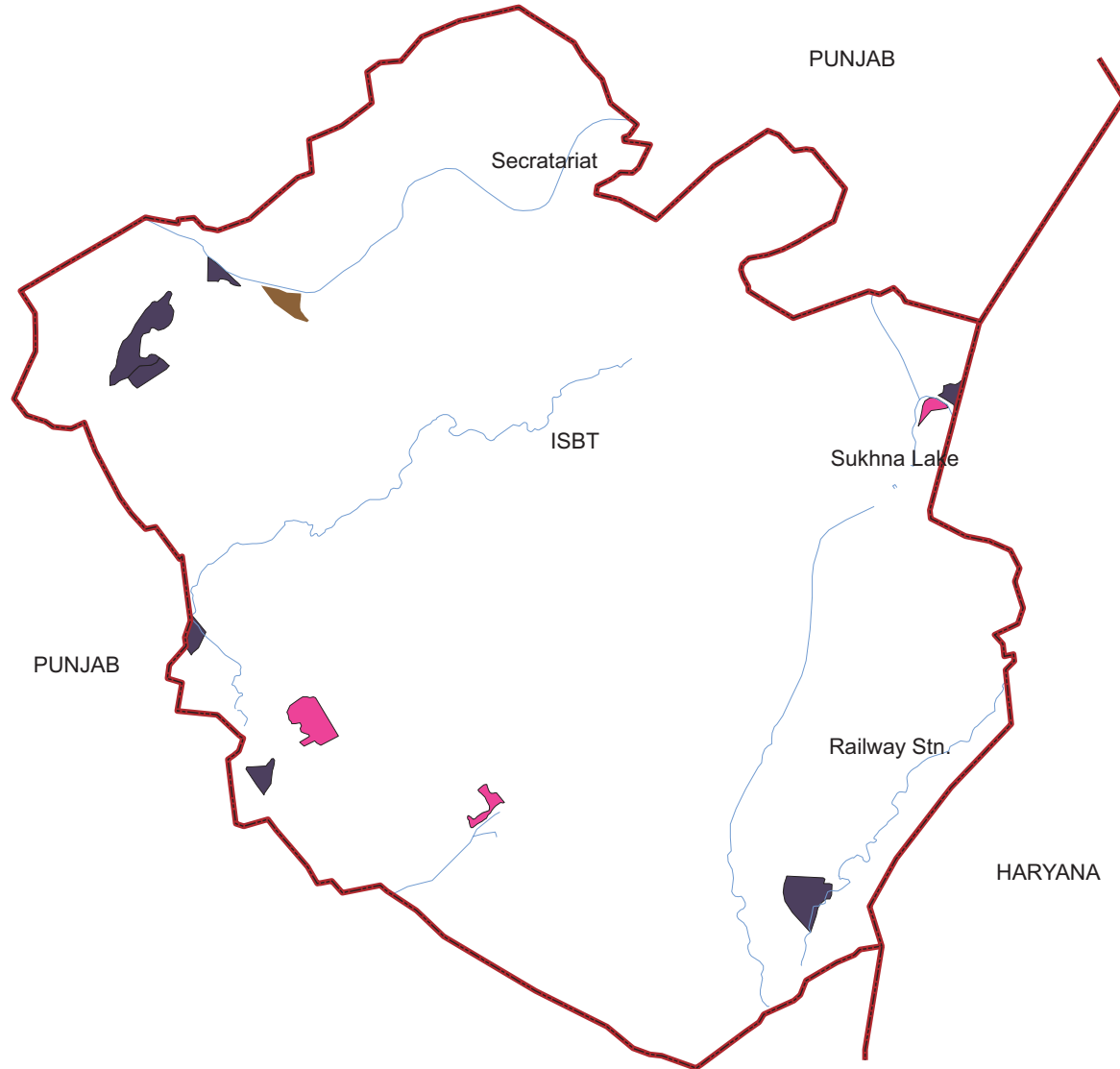
Source: Wasteland Maps: 2008-09 on 1:50,000 scale,
 Three seasons IRS P6 LISS-III data of Kharif(Oct/Nov-2015),
 Rabi (Jan/Feb-2016) and Zaid (April/May-2016) & Ground truth

CHANDIGARH Spatial Distribution of Watelands 2015-16



Legend

- Gullied and/ or ravinous land (Medium)
- Gullied and/ or ravinous land (Deep)
- Land with Dense Scrub
- Land with Open Scrub
- Waterlogged and Marshy land (Permanent)
- Waterlogged and Marshy land (Seasonal)
- Land Affected by salinity / alkalinity (Moderate)
- Land Affected by salinity / alkalinity (Strong)
- Shifting Cultivation - Current Jhum
- Shifting Cultivation - Abandoned Jhum
- Under-utilised/degraded forest (Scrub domin)
- Under-utilised/degraded forest (Agriculture)
- Degraded pastures/grazing land
- Degraded land under plantation crop
- Sands - Riverine
- Sands - Coastal
- Sands - Desertic
- Sands - Semi Stab:- Stab > 40m
- Sands - Semi Stab:- Stab 15-40m
- Mining Wastelands
- Industrial Wastelands
- Barren Rocky Area
- Snow Covered/ Glacial Area
- Non Wasteland Area
- Water ways
- District Boundary
- Railways
- Major Roads



Executed By Land Use & Cover Monitoring Divn.
LRUMG, Remote Sensing Application
National Remote Sensing Centre
ISRO, Dept. of Space, GOI
Balanagar, Hyderabad - 500037

Sponsored by Dept. of Land Resources
Min. of Rural Development
G - Wing, Nirman Bhawan
GOI, New Delhi - 110 011

Total Geog. Area (TGA): 114.00 sq. km.
Total wasteland area : 1.55 sq. km.
Wasteland Percentage: 1.37

Source: Wasteland Maps: 2008-09 on 1:50,000 scale,
Three seasons IRS P6 LISS-III data of Kharif (Oct/Nov-2015),
Rabi (Jan/Feb-2016) and Zaid (April/May-2016) & Ground truth

UNION TERRITORIES

Wastelands Area Change Matrix : 2008-09 and 2015-16

Area in sq.km

WL Categories	WL during 2008-09 remaining as WL in 2015-16										WL 2008-09 becoming non_WL in 2015-16						2008-09	
	3	4	5	7	11	12	15	16	20	21	24	25	26	28	29	30	Category Total	Grand Total
3	5.02	1.75									0.09						6.86	309.95
4		10.33						0.12			1.20	0.14					11.79	
5			2.31														2.31	
7				3.09							0.37						3.46	
11					246.97	0.07								2.16	9.49	0.03	258.72	
12						20.76											20.76	
15							2.49										2.49	
16		0.65						2.35									3.00	
20									0.30	0.06							0.36	
21										0.21							0.21	
999	0.27	3.78		0.04	5.01			0.65									12711.69	
Category Total (2015-16)	5.29	16.51	2.31	3.13	251.98	20.83	2.49	3.00	0.42	0.27	1.66	0.14		2.16	9.49	0.03		
Grand Total (2015-16)	306.23																	

WL Category	Reduction from 0809 to 1516		Increase from 0809 to 1516	
	Area	No of polygons	Area	No of polygons
3	0.09	2	0.27	2
4	1.34	10	3.78	13
5				
7	0.37	2	0.04	1
11	11.68	13	5.01	21
12				
15				
16			0.65	1
20				
21				
Total	13.49	27	9.76	38

Wastelands becoming Non-wastelands (-) **13.49**
 Non-wastelands becoming Wastelands (+) **9.76**
 NET Change (2015 - 16)- (2008 - 09) (-) **3.72**

13.49
9.76
3.72

Green denotes Change from wasteland to non-wasteland
Red denotes change from non-wasteland to wastelands
Blue denotes no change in the wasteland category
 2008 - 09 Wastelands statistics are revised version.
 Area under category total is rounded to nearest decimal.

Wasteland Classes	9. Shifting Cultivation - Current Jhum	17. Sands-Desertic	Non-Wasteland Classes
1. Gullied and/ or ravinous land (Medium)	10. Shifting Cultivation - Abandoned Jhum	18. Sands-Semi Stab.-Stab>40m	24. Built-up
2. Gullied and/ or ravinous land (Deep)	11. Under-utilised/degraded forest (Scrub domin)	19. Sands-Semi Stab.-Stab 15-40m	25. Industrial Area
3. Land with Dense Scrub	12. Under-utilised/degraded forest (Agriculture)	20. Mining Wastelands	26. Cropland
4. Land with Open Scrub	13. Degraded pastures/ grazing land	21. Industrial wastelands	27. Fallow Land
5. Waterlogged and Marshy land (Permanent)	14. Degraded land under plantation crop	22. Barren Rocky/Stony waste	28. Plantation
6. Waterlogged and Marshy land (Seasonal)	15. Sands-Riverine	23. Snow covered /Glacial area	29. Forest-Dense/Open
7. Land affected by salinity/alkalinity (Medium)	16. Sands-Coastal	999. Non-Wasteland Area	30. Forest Plantation
8. Land affected by salinity/alkalinity (Strong)			31. Grasslands
			32. Waterbodies

Union Territories

Wastelands Area Changes – 2008-09 and 2015-16

	District	WL_Class	1	2	3	4	5	6	7	8	9	10	11	
Andaman & Nicobar Islands		2008-09	--	--	--	0.99	2.31	--	--	--	--	--	243.54	
		2015-16	--	--	--	4.93	2.31	--	--	--	--	--	236.88	
		Change	--	--	--	3.94	0.00	--	--	--	--	--	-6.67	
Chandigarh		2008-09	--	--	0.13	0.96	--	--	--	--	--	--	--	
		2015-16	--	--	0.39	1.05	--	--	--	--	--	--	--	
		Change	--	--	0.26	0.08	--	--	--	--	--	--	--	
Dadra & Nagar Haveli		2008-09	--	--	1.44	2.47	--	--	--	--	--	--	15.17	
		2015-16	--	--	0.93	2.67	--	--	--	--	--	--	15.10	
		Change	--	--	-0.51	0.20	--	--	--	--	--	--	-0.07	
Daman & Diu	Daman	2008-09	--	--	2.33	1.94	--	--	--	--	--	--	--	
		2015-16	--	--	1.30	2.85	--	--	--	--	--	--	--	
		Change	--	--	-1.03	0.91	--	--	--	--	--	--	--	
	Diu	2008-09	--	--	0.05	--	--	--	3.46	--	--	--	--	
		2015-16	--	--	0.05	--	--	--	3.13	--	--	--	--	
		Change	--	--	0.00	0.00	--	--	-0.33	--	--	--	--	
Lakshadweep		2008-09	--	--	--	--	--	--	--	--	--	--	--	
		2015-16	--	--	--	--	--	--	--	--	--	--	--	
		Change	--	--	--	--	--	--	--	--	--	--	--	
Puduchery	Karaikal	2008-09	--	--	1.88	1.43	--	--	--	--	--	--	--	
		2015-16	--	--	1.88	0.80	--	--	--	--	--	--	--	
		Change	--	--	0.00	-0.63	--	--	--	--	--	--	--	
	Mahe	2008-09	--	--	--	--	--	--	--	--	--	--	--	--
		2015-16	--	--	--	--	--	--	--	--	--	--	--	--
		Change	--	--	--	--	--	--	--	--	--	--	--	--
	Puduchery	2008-09	--	--	1.03	4.00	--	--	--	--	--	--	--	--
		2015-16	--	--	0.74	4.22	--	--	--	--	--	--	--	--
		Change	--	--	-0.29	0.21	--	--	--	--	--	--	--	--
	Yanam	2008-09	--	--	--	--	--	--	--	--	--	--	--	--
		2015-16	--	--	--	--	--	--	--	--	--	--	--	--
		Change	--	--	--	--	--	--	--	--	--	--	--	--
Grand Total		2008-09	--	--	6.86	11.79	2.31	--	3.46	--	--	--	258.72	
		2015-16	--	--	5.29	16.51	2.31	--	3.13	--	--	--	251.98	
		Change	--	--	-1.58	4.72	0.00	--	-0.33	--	--	--	-6.74	

Note: "--" Denotes this Class is not existing in the District / State

2008-09 Wastelands statistics are revised version.

- | | |
|--|--|
| 1. Gullied and/ or ravinous land (Medium) | 7. Land affected by salinity/alkalinity (Medium) |
| 2. Gullied and/ or ravinous land (Deep) | 8. Land affected by salinity/alkalinity (Strong) |
| 3. Land with Dense Scrub | 9. Shifting Cultivation - Current Jhum |
| 4. Land with Open Scrub | 10. Shifting Cultivation - Abandoned Jhum |
| 5. Waterlogged and Marshy land (Permanent) | 11. Under-utilised/degraded forest (Scrub domin) |
| 6. Waterlogged and Marshy land (Seasonal) | 12. Under-utilised/degraded forest (Agriculture) |

Area in sq.km

12	13	14	15	16	17	18	19	20	21	22	23	Total	TGA
--	--	--	--	0.71	--	--	--	--	--	--	--	247.55	8249
--	--	--	--	0.71	--	--	--	--	--	--	--	244.83	
--	--	--	--	0.01	--	--	--	--	--	--	--	-2.72	
--	--	--	--	--	--	--	--	--	--	--	--	1.09	114
--	--	--	--	--	--	--	--	0.12	--	--	--	1.56	
--	--	--	--	--	--	--	--	0.12	--	--	--	0.46	
20.76	--	--	0.11	--	--	--	--	0.02	0.05	--	--	40.03	491
20.83	--	--	0.11	--	--	--	--	0.02	0.05	--	--	39.71	
0.07	--	--	0.00	--	--	--	--	0.00	0.00	--	--	-0.32	
--	--	--	--	--	--	--	--	0.28	0.16	--	--	4.71	72
--	--	--	--	--	--	--	--	0.22	0.22	--	--	4.60	
--	--	--	--	--	--	--	--	-0.06	0.06	--	--	-0.11	
--	--	--	--	--	--	--	--	--	--	--	--	3.51	40
--	--	--	--	--	--	--	--	--	--	--	--	3.18	
--	--	--	--	--	--	--	--	--	--	--	--	-0.33	
--	--	--	--	0.05	--	--	--	--	--	--	--	0.05	32
--	--	--	--	0.05	--	--	--	--	--	--	--	0.05	
--	--	--	--	0.00	--	--	--	--	--	--	--	0.00	
--	--	--	--	--	--	--	--	--	--	--	--	3.30	160
--	--	--	--	--	--	--	--	--	--	--	--	2.68	
--	--	--	--	--	--	--	--	--	--	--	--	-0.63	
--	--	--	--	--	--	--	--	--	--	--	--	--	9
--	--	--	--	--	--	--	--	--	--	--	--	--	
--	--	--	--	--	--	--	--	--	--	--	--	--	
--	--	--	2.38	2.24	--	--	--	0.05	--	--	--	9.69	293
--	--	--	2.38	2.24	--	--	--	0.05	--	--	--	9.62	
--	--	--	0.00	0.00	--	--	--	0.00	--	--	--	-0.08	
--	--	--	--	--	--	--	--	--	--	--	--	--	30
--	--	--	--	--	--	--	--	--	--	--	--	--	
--	--	--	--	--	--	--	--	--	--	--	--	--	
20.76	--	--	2.49	3.00	--	--	--	0.36	0.21	--	--	309.95	9490
20.83	--	--	2.49	3.00	--	--	--	0.42	0.27	--	--	306.23	
0.07	--	--	0.00	0.01	--	--	--	0.06	0.06	--	--	-3.72	

TGA - Total Geographical Area

13. Degraded pastures/ grazing land	19. Sands-Semi Stab.-Stab 15-40m
14. Degraded land under plantation crop	20. Mining Wastelands
15. Sands-Riverine	21. Industrial wastelands
16. Sands-Coastal	22. Barren Rocky/Stony waste
17. Sands-Desertic	23. Snow covered /Glacial area
18. Sands-Semi Stab.-Stab>40m	

