

For Official Use

# WASTELAND MAP 2003 Bihar



## LEGEND

- |  |                                      |  |                                       |
|--|--------------------------------------|--|---------------------------------------|
|  | Gullied and / or ravinous (1)        |  | Degraded pasture and grazing land (9) |
|  | Land with scrub (2)                  |  | Degraded plantation crops(10)         |
|  | Land without scrub (3)               |  | Sand - Inland / coastal (11)          |
|  | Waterlogged and marshy (4)           |  | Mining / Industrial waste (12)        |
|  | Saline / Alkaline (5)                |  | Barren rocky / Stony waste (13)       |
|  | Shifting cultivation - Abandoned (6) |  | Steep sloping (14)                    |
|  | Shifting cultivation - Current (7)   |  | Snow covered and / Glacial (15)       |
|  | Degraded forest (8)                  |  |                                       |

## OTHERS

- |  |                                       |  |              |  |                         |
|--|---------------------------------------|--|--------------|--|-------------------------|
|  | Water bodies (river, tank, reservoir) |  | Settlement   |  | Sand (tank / river bed) |
|  | Intern. Boundary                      |  | Major Roads  |  |                         |
|  | State Boundary                        |  | Railway Line |  |                         |
|  | Dist. Boundary                        |  | River        |  |                         |
|  | Taluk Boundary                        |  |              |  |                         |

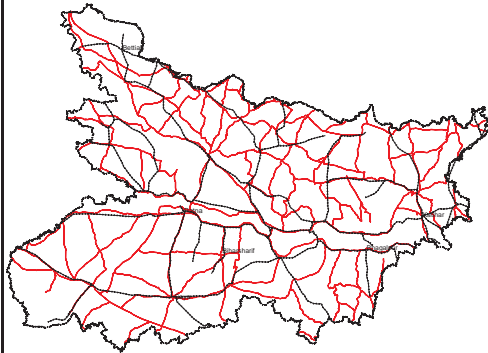
Source: Wasteland Maps - 2003 on 1:50,000 scale (Based on IRS Satellite LISS - III Imagery, Wasteland Maps (1986 - 2000), limited field check, Revenue Records / Maps.

Prepared by:  
**Bihar Remote Sensing Application Centre**  
Planetary Complex, Near Kotwali,  
Patna, 800 001, Bihar

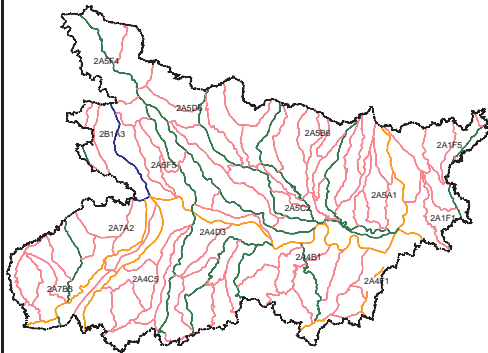
Co-ordinated by:  
Land Use Division, RS & GIS AA  
National Remote Sensing Agency  
Dept. of Space, Govt. of India,  
Balanagar, Hyderabad - 500 037

Sponsored by:  
Dept. of Land Resources  
Min. of Rural Development  
G - Wing, Nirman Bhawan,  
Govt. of India, New Delhi - 110011

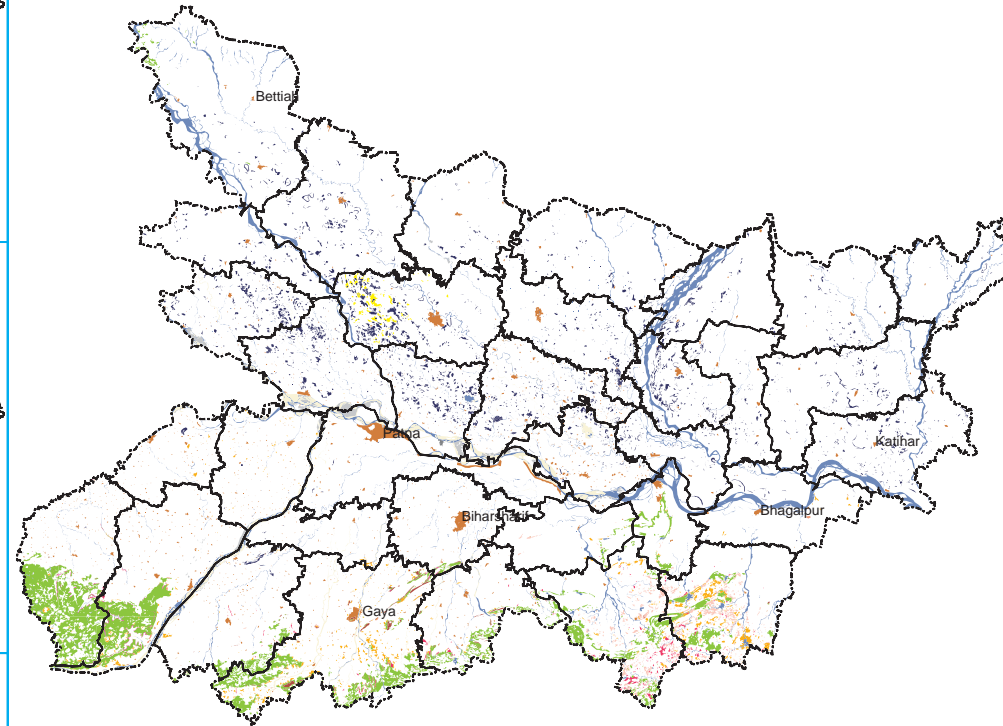
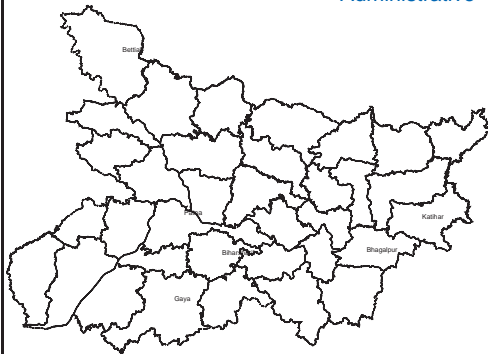
Base



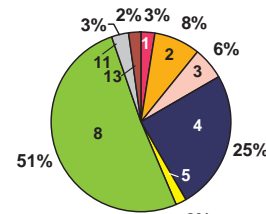
Watershed



Administrative



## AREA STATISTICS



Note: Refer legend for category

Total Geog. Area (TGA) :94171.00 sq. km.  
Total Wasteland Area : 5443.68 sq. km.  
Wasteland Area : 5.78 percent

BIHAR

Category	Area in Sq km																	
	Araria	Aurangabad	Banka	Begusarai	Bhahua (Kaimur)	Bhagalpur	Bhojpur	Buxar	Champaran (E)	Champaran (W)	Darbhanga	Gaya	Gopalganj	Hajipur (Vaishali)	Jamui	Jehanabad	Katihar	Khagaria
1	0.00	5.10	23.56	0.00	8.99	0.00	0.00	0.00	0.00	0.00	0.00	19.82	0.00	0.00	56.52	0.00	0.00	0.00
2	0.00	0.00	0.00	0.00	0.00	0.00	0.00	0.00	0.00	0.00	0.00	0.00	0.00	0.00	0.00	0.00	0.00	0.00
3	0.00	0.00	0.00	0.00	0.00	0.00	0.00	0.00	0.00	0.00	0.00	0.00	0.00	0.00	0.00	0.00	0.00	0.00
4	0.00	11.01	146.98	0.00	18.12	7.18	18.98	8.12	0.00	0.00	0.00	140.74	0.00	0.00	36.84	7.40	0.00	0.00
5	0.00	1.94	160.42	0.00	2.25	0.00	3.57	0.66	0.00	0.00	0.00	2.75	0.00	0.00	141.97	0.00	0.00	0.00
6	7.83	3.36	0.17	18.15	0.00	7.48	5.24	1.71	40.43	14.04	28.30	0.52	12.16	99.02	0.00	0.00	32.72	25.31
7	19.57	9.90	0.00	21.00	2.40	0.00	4.38	5.87	45.03	18.50	20.90	0.63	28.63	35.29	0.00	1.34	41.51	11.16
8	0.00	0.00	0.00	0.00	0.00	0.00	0.00	0.00	0.00	0.00	0.00	0.00	0.00	0.00	0.00	0.00	0.00	0.00
9	0.00	0.00	0.00	0.00	0.00	0.00	0.00	0.00	0.00	0.00	0.00	0.00	0.00	0.00	0.00	0.00	0.00	0.00
10	0.00	0.00	0.00	0.00	0.00	0.00	0.00	0.00	0.00	0.00	0.00	0.00	0.00	0.00	0.00	0.00	0.00	0.00
11	0.00	0.00	0.00	0.00	0.00	0.00	0.00	0.00	0.00	0.00	0.00	0.00	0.00	0.00	0.00	0.00	0.00	0.00
12	0.00	0.00	0.00	0.00	0.00	0.00	0.00	0.00	0.00	0.00	0.00	0.00	0.00	0.00	0.00	0.00	0.00	0.00
13	0.00	118.46	198.19	0.00	867.99	0.00	0.00	0.00	0.00	31.98	0.00	522.87	0.00	0.00	253.33	0.00	0.00	0.00
14	0.00	11.65	0.00	0.00	9.91	0.00	0.00	0.00	0.00	0.00	0.00	14.14	0.00	0.00	6.91	0.00	0.00	0.00
15	0.00	0.00	0.00	0.00	0.00	0.00	0.00	0.00	0.00	0.00	0.00	0.00	0.00	0.00	0.00	0.00	0.00	0.00
16	0.00	0.00	0.00	0.00	0.00	0.00	0.00	0.00	0.00	0.00	0.00	0.00	0.00	4.87	0.00	0.00	0.00	0.00
17	1.96	0.00	0.00	0.00	0.00	0.00	0.00	0.00	0.00	0.00	1.23	0.00	0.00	0.00	0.00	0.00	0.00	0.00
18	0.00	2.25	0.00	0.35	0.00	0.00	3.31	0.71	0.00	0.00	0.00	0.92	0.00	0.00	0.00	0.32	0.00	0.00
19	0.00	0.00	0.00	0.00	0.00	0.00	0.00	0.00	0.00	0.00	0.00	0.00	0.00	0.00	0.00	0.00	0.00	0.00
20	0.00	0.00	0.00	0.00	0.00	0.00	0.00	0.00	0.00	0.00	0.00	0.00	0.00	0.00	0.00	0.00	0.00	0.00
21	0.00	0.00	0.00	0.00	0.00	0.00	0.00	0.00	0.00	0.00	0.00	0.00	0.00	0.00	0.00	0.00	0.00	0.00
22	0.00	0.00	0.00	0.00	0.00	0.00	0.00	0.00	0.00	0.00	0.00	0.00	0.00	0.00	0.00	0.00	0.00	0.00
23	0.00	0.00	0.00	0.00	0.00	0.00	0.00	0.00	0.00	0.00	0.00	0.00	0.00	0.00	0.00	0.00	0.00	0.00
24	0.00	0.16	0.00	0.00	0.00	2.02	0.00	0.00	0.00	0.00	0.00	0.00	0.00	0.00	0.00	0.00	0.00	0.00
25	0.00	0.00	0.00	0.00	0.00	0.00	0.00	0.00	0.00	0.00	0.00	0.00	0.00	0.00	0.00	0.00	0.00	0.00
26	0.00	3.31	1.31	0.00	4.33	0.00	0.00	0.00	0.00	0.00	0.00	57.06	0.00	0.00	2.22	0.22	0.00	0.00
27	0.00	0.00	0.00	0.00	11.03	0.00	0.00	0.00	0.00	0.00	0.00	3.24	0.00	0.00	0.00	0.00	0.00	0.00
28	0.00	0.00	0.00	0.00	0.00	0.00	0.00	0.00	0.00	0.00	0.00	0.00	0.00	0.00	0.00	0.00	0.00	0.00
<b>TOTAL</b>	<b>29.36</b>	<b>167.14</b>	<b>530.63</b>	<b>39.50</b>	<b>925.02</b>	<b>16.68</b>	<b>35.48</b>	<b>17.07</b>	<b>85.46</b>	<b>64.52</b>	<b>50.43</b>	<b>762.69</b>	<b>40.79</b>	<b>139.18</b>	<b>497.79</b>	<b>9.28</b>	<b>74.23</b>	<b>36.47</b>
<b>TGA</b>	<b>2792</b>	<b>3305</b>	<b>3018</b>	<b>1889.00</b>	<b>3369</b>	<b>2561</b>	<b>2474</b>	<b>1624</b>	<b>3968</b>	<b>5228</b>	<b>2279</b>	<b>4976</b>	<b>2033</b>	<b>2036</b>	<b>3143</b>	<b>1569</b>	<b>3057</b>	<b>1482</b>
<b>% to TGA</b>	<b>1.05</b>	<b>5.06</b>	<b>17.58</b>	<b>2.09</b>	<b>27.46</b>	<b>0.65</b>	<b>1.43</b>	<b>1.05</b>	<b>2.15</b>	<b>1.23</b>	<b>2.21</b>	<b>15.33</b>	<b>2.01</b>	<b>6.84</b>	<b>15.84</b>	<b>0.59</b>	<b>2.43</b>	<b>2.46</b>

- |   |   |   |   |  |  |
|---|---|---|---|--|--|
| 01. Gullied and /or ravinous land (Shallow) | 06. Waterlogged and Marshy land (Permanent)         | 11. Shifting cultivation area (Abandoned Jhum)          | 16. Degraded land under plantation crop | 21. Sands-(Semi Stab.-Stab Moder. High 15-40m) | 26. Barren Rocky/Stone Waste/Sheet Rock Area |
| 02. Gullied and /or ravinous land (Medium)  | 07. Waterlogged and Marshy land (Seasonal)          | 12. Shifting cultivation area (Current Jhum)            | 17. Sands-(Flood Plain)                 | 22. Sands-(Semi Stab. to Stab. low<15m)        | 27. Steep Sloping Area                       |
| 03. Gullied and /or ravinous land (Deep)    | 08. Land affected by salinity/alkalinity (Strong)   | 13. Under utilised/degraded notified forest land        | 18. Sands-(Levees)                      | 23. Sands-(Closely Spaced Inter-Dune Area)     | 28. Snow covered and/or Glacial Area         |
| 04. Land with scrub                         | 09. Land affected by salinity/alkalinity (Moderate) | 14. Under utilised/degraded notified forest land(Agri.) | 19. Sands-(Coastal Sand)                | 24. Mining Wastelands                          | Total Wasteland Area                         |
| 05. Land without scrub                      | 10. Land affected by salinity/alkalinity (Slight)   | 15. Degraded pastures/grazing land                      | 20. Sands-(Semi Stab.-Stab>40m)         | 25. Industrial Wastelands                      | TGA: Total Geographical Area                 |

BIHAR Contd.....

Category	Kishanganj	Lakhisarai	Madhepura	Madhubani	Munger*	Muzaffarpur	Nalanda	Nawada	Patna	Purnia	Rohtas	Saharsa	Samastipur	Saran	Sitamarhi	Siwan	Supaul <sup>16</sup>	Total
1	0.00	0.68	0.00	0.00	0.00	0.00	0.00	14.27	0.00	0.00	6.59	0.00	0.00	0.00	0.00	0.00	0.00	136.53
2	0.00	0.00	0.00	0.00	0.00	0.00	0.00	0.00	0.00	0.00	0.00	0.00	0.00	0.00	0.00	0.00	0.00	0.00
3	0.00	0.00	0.00	0.00	0.00	0.00	0.00	0.00	0.00	0.00	0.00	0.00	0.00	0.00	0.00	0.00	0.00	0.00
4	0.00	4.82	0.00	0.00	7.73	0.00	0.19	10.76	2.55	0.00	37.21	0.00	0.00	0.12	0.00	0.00	0.00	462.75
5	0.00	6.76	0.00	0.00	4.90	0.00	0.00	0.00	0.00	0.00	0.00	0.00	0.00	0.00	0.00	0.00	0.00	330.22
6	6.42	0.00	20.39	10.35	0.00	90.66	0.00	0.06	0.93	5.89	0.00	48.25	60.50	36.24	8.52	46.04	16.64	653.33
7	5.41	0.00	9.39	25.16	0.00	114.47	0.00	0.25	4.88	52.16	0.22	44.95	48.45	67.95	9.33	70.71	36.44	762.88
8	0.00	0.00	0.00	0.00	0.00	0.00	0.00	0.00	0.00	0.00	0.00	0.00	0.00	0.00	0.00	0.00	0.00	0.00
9	0.00	0.00	0.00	0.00	0.00	0.00	0.00	0.00	0.00	0.00	0.00	0.00	0.00	0.00	0.00	0.00	0.00	0.00
10	0.00	0.00	0.00	0.00	0.00	76.20	0.00	0.00	0.00	0.00	0.00	0.00	0.00	0.00	0.00	0.00	0.00	86.20
11	0.00	0.00	0.00	0.00	0.00	0.00	0.00	0.00	0.00	0.00	0.00	0.00	0.00	0.00	0.00	0.00	0.00	0.00
12	0.00	0.00	0.00	0.00	0.00	0.00	0.00	0.00	0.00	0.00	0.00	0.00	0.00	0.00	0.00	0.00	0.00	0.00
13	0.00	21.23	0.00	0.00	87.25	0.00	23.79	150.80	0.00	0.00	531.80	0.00	0.00	0.00	0.00	0.00	0.00	2820.69
14	0.00	0.00	0.00	0.00	0.00	0.00	1.88	1.51	0.00	0.00	5.10	0.00	0.00	0.00	0.00	0.00	0.00	65.10
15	0.00	0.00	0.00	0.00	0.00	0.00	0.00	0.00	0.00	0.00	0.00	0.00	2.62	0.00	0.00	0.00	0.00	17.62
16	0.00	0.00	0.00	0.00	0.00	0.00	0.00	0.00	0.00	0.00	0.00	0.00	0.00	0.00	0.00	0.00	0.00	20.87
17	0.00	0.00	0.00	1.91	0.00	0.00	0.00	0.00	0.00	0.00	0.00	0.00	0.00	0.00	10.43	0.00	0.00	32.53
18	0.00	0.00	0.00	0.00	0.00	0.00	0.88	0.13	0.00	0.00	5.39	0.00	1.04	0.00	0.00	0.00	0.00	33.30
19	0.00	0.00	0.00	0.00	0.00	0.00	0.00	0.00	0.00	0.00	0.00	0.00	0.00	0.00	0.00	0.00	0.00	0.00
20	0.00	0.00	0.00	0.00	0.00	0.00	0.00	0.00	0.00	0.00	0.00	0.00	0.00	0.00	0.00	0.00	0.00	0.00
21	0.00	0.00	0.00	0.00	0.00	0.00	0.00	0.00	0.00	0.00	0.00	0.00	0.00	0.00	0.00	0.00	0.00	0.00
22	0.00	0.00	0.00	0.00	0.00	0.00	0.00	0.00	0.00	0.00	0.00	0.00	0.00	0.00	0.00	0.00	0.00	0.00
23	0.00	0.00	0.00	0.00	0.00	0.00	0.00	0.00	0.00	0.00	0.00	0.00	0.00	0.00	0.00	0.00	0.00	0.00
24	0.00	0.00	0.00	0.00	0.61	0.00	0.00	0.83	0.00	0.00	7.22	0.00	0.00	0.00	0.00	0.00	0.00	34.84
25	0.00	0.00	0.00	0.00	0.18	0.00	0.00	0.00	0.00	0.00	0.00	0.00	0.00	0.00	0.00	0.00	0.00	25.18
26	0.00	0.00	0.00	0.00	0.00	0.00	3.52	31.51	0.00	0.00	0.49	0.00	0.00	0.00	0.00	0.00	0.00	129.97
27	0.00	0.00	0.00	0.00	0.00	0.00	1.68	0.06	0.00	0.00	16.66	0.00	0.00	0.00	0.00	0.00	0.00	59.67
28	0.00	0.00	0.00	0.00	0.00	0.00	0.00	0.00	0.00	0.00	0.00	0.00	0.00	0.00	0.00	0.00	0.00	0.00
<b>TOTAL</b>	<b>11.83</b>	<b>33.49</b>	<b>29.78</b>	<b>37.42</b>	<b>100.67</b>	<b>281.33</b>	<b>31.94</b>	<b>210.18</b>	<b>8.36</b>	<b>58.05</b>	<b>610.68</b>	<b>93.20</b>	<b>112.61</b>	<b>104.31</b>	<b>28.28</b>	<b>116.75</b>	<b>53.08</b>	<b>5443.68</b>
<b>TGA</b>	<b>1936</b>	<b>1882</b>	<b>1792</b>	<b>3501</b>	<b>1397</b>	<b>3172</b>	<b>2367</b>	<b>2494</b>	<b>3202</b>	<b>3200</b>	<b>3844</b>	<b>1194</b>	<b>2904</b>	<b>2641</b>	<b>2643</b>	<b>2219</b>	<b>2980</b>	<b>94171</b>
<b>% to TGA</b>	<b>0.61</b>	<b>1.78</b>	<b>1.66</b>	<b>1.07</b>	<b>7.21</b>	<b>8.87</b>	<b>1.35</b>	<b>8.43</b>	<b>0.26</b>	<b>1.81</b>	<b>15.89</b>	<b>7.81</b>	<b>3.88</b>	<b>3.95</b>	<b>1.07</b>	<b>5.26</b>	<b>1.78</b>	<b>5.78</b>

\* Includes Sheikhpura district

01. Gullied and/or ravinous land (Shallow)	06. Waterlogged and Marshy land (Permanent)	11. Shifting cultivation area (Abandoned Jhum)	16. Degraded land under plantation crop	21. Sands-(Semi Stab.-Stab Moder. High 15-40m)	26. Barren Rocky/Stone Waste/Sheet Rock Area
02. Gullied and/or ravinous land (Medium)	07. Waterlogged and Marshy land (Seasonal)	12. Shifting cultivation area (Current Jhum)	17. Sands-(Flood Plain)	22. Sands-(Semi Stab. to Stab. low<15m)	27. Steep Sloping Area
03. Gullied and/or ravinous land (Deep)	08. Land affected by salinity/alkalinity (Strong)	13. Under utilised/degraded notified forest land	18. Sands-(Levees)	23. Sands-(Closely Spaced Inter-Dune Area)	28. Snow covered and/or Glacial Area
04. Land with scrub	09. Land affected by salinity/alkalinity (Moderate)	14. Under utilised/degraded notified forest land (Agri.)	19. Sands-(Coastal Sand)	24. Mining Wastelands	Total Wasteland Area
05. Land without scrub	10. Land affected by salinity/alkalinity (Slight)	15. Degraded pastures/grazing land	20. Sands-(Semi Stab.-Stab>40m)	25. Industrial Wastelands	TGA: Total Geographical Area