

For Official Use

WASTELAND MAP 2003 Gujarat



LEGEND

	Gullied and / or ravinous (1)		Degraded pasture and grazing land (9)
	Land with scrub (2)		Degraded plantation crops(10)
	Land without scrub (3)		Sand - Inland / coastal (11)
	Waterlogged and marshy (4)		Mining / Industrial waste (12)
	Saline / Alkaline (5)		Barren rocky / Stony waste (13)
	Shifting cultivation - Abandoned (6)		Steep sloping (14)
	Shifting cultivation - Current (7)		Snow covered and / Glacial (15)
	Degraded forest (8)		

OTHERS

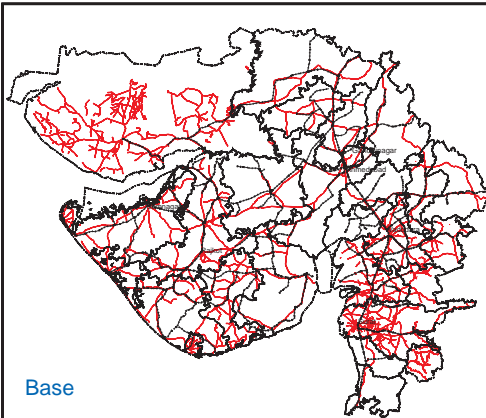
	Water bodies (river, tank, reservoir)		Settlement		Sand (tank / river bed)
	Intern. Boundary		Major Roads		
	State Boundary		Railway Line		
	Dist. Boundary		River		
	Taluk Boundary				

Source: Wasteland Maps - 2003 on 1:50,000 scale (Based on IRS Satellite LISS - III Imagery, Wasteland Maps (1986 - 2000), limited field check, Revenue Records / Maps.

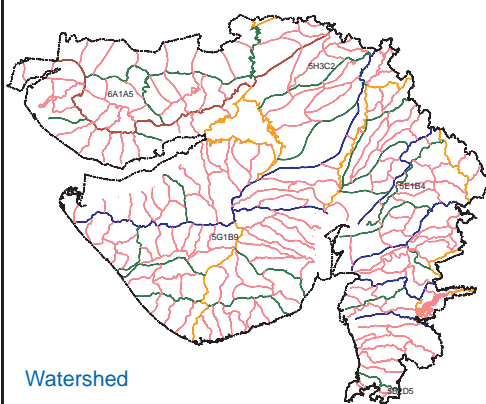
Prepared by:
Bhaskaracharya Inst. for Space App. and Geoinf.
Near Ch-0 Circle, Indulal Yagnik Marg
Gandhinagar, Gujarat

Co-ordinated by:
Land Use Division, RS & GIS AA
National Remote Sensing Agency
Dept. of Space, Govt. of India,
Balanagar, Hyderabad - 500 037

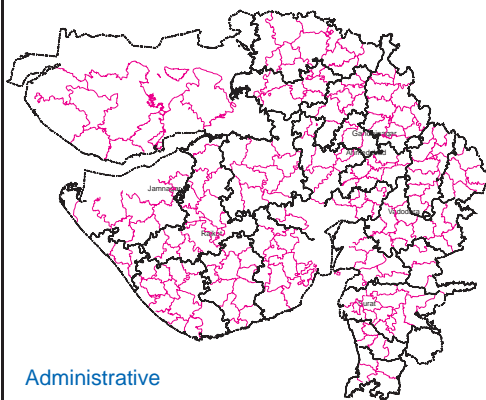
Sponsored by:
Dept. of Land Resources
Min. of Rural Development
G - Wing, Nirman Bhawan,
Govt. of India, New Delhi - 110011



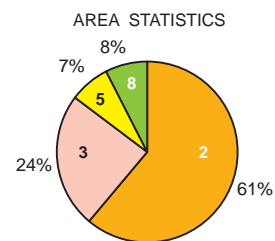
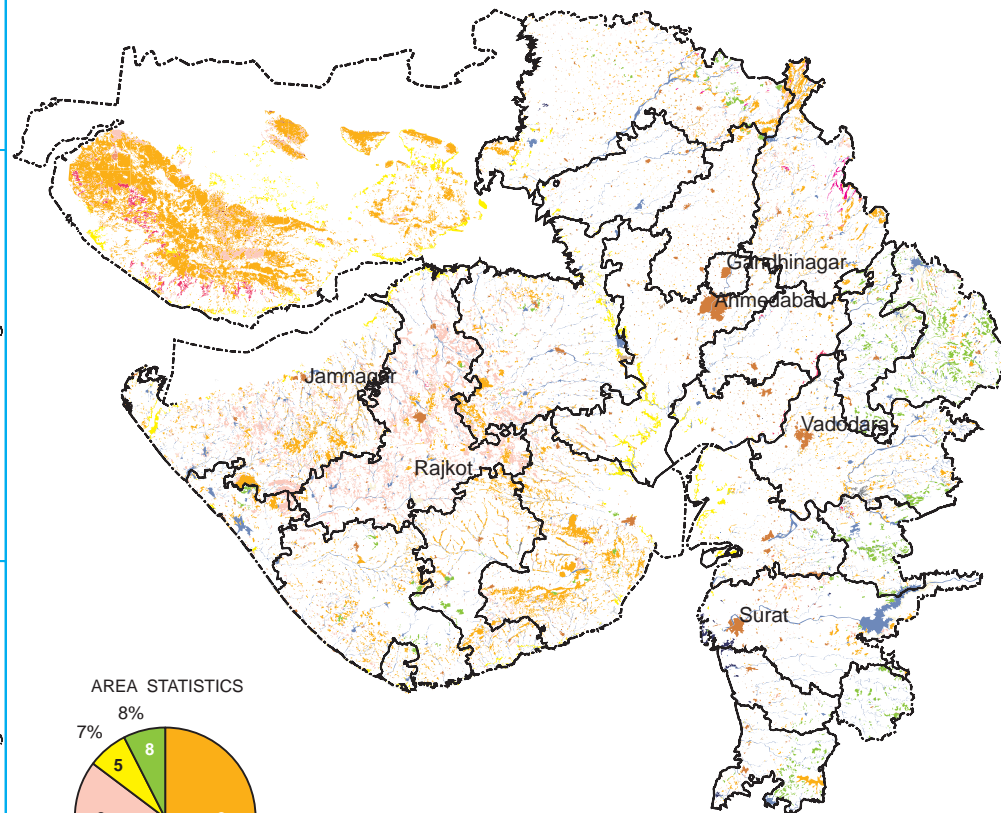
Base



Watershed



Administrative



Note: Refer legend for category

Total Geog. Area (TGA) :1,96,024 Sq km
Total Wasteland Area : 20,377.74 Sq km
Wasteland Area : 10.40 percent

GUJARAT

Area in Sq km

Category	Ahmedabad	Amreli	Anand	Banas-kantha	Bharuch	Bhavnagar	Dohad	Gandhinagar	Jamnagar	Junagadh	Kheda	Kachchh	Mahesana	Narmada	Navsari	Panchmahals	Patan	Porbandar	Rajkot	Sabar-kantha	Surat	Surendranagar	The Dangs	Vadodara	Valsad	Total
1	0.00	2.30	12.78	1.23	1.71	0.26	0.00	0.00	0.00	0.00	0.00	130.00	0.00	2.25	0.00	0.00	0.00	0.00	0.00	0.00	0.00	0.00	0.00	0.00	0.00	150.52
2	0.00	0.00	0.00	0.00	0.00	0.00	0.00	0.49	0.17	0.00	26.05	202.00	0.15	2.84	0.00	0.00	0.00	0.00	4.99	1.89	0.00	0.35	0.00	1.80	0.00	240.72
3	0.00	0.00	0.00	0.00	0.00	0.00	0.00	0.00	0.00	0.00	0.00	0.00	0.00	0.00	0.00	0.00	0.00	0.00	0.00	0.00	0.00	0.00	0.00	0.00	0.00	0.00
4	113.46	572.00	32.68	443.39	62.47	922.85	109.67	37.80	820.78	423.50	78.59	5500.00	85.06	88.71	17.73	92.87	136.96	117.47	280.56	604.60	114.78	466.55	0.00	292.43	92.32	12520.27
5	38.17	143.44	7.72	155.27	9.64	174.18	32.39	3.38	772.98	107.67	11.00	814.00	41.00	2.44	4.30	50.49	35.11	100.09	1745.39	172.80	62.28	448.90	0.00	19.69	15.10	4967.40
6	0.00	0.00	0.00	0.00	0.00	0.00	0.00	0.00	0.00	0.00	0.00	0.00	0.00	0.00	0.00	0.00	0.00	0.00	0.00	0.00	0.00	0.00	0.00	0.00	0.00	0.00
7	0.00	0.00	0.00	4.73	0.00	0.17	0.00	0.00	0.09	0.00	0.00	0.00	0.00	0.00	25.07	3.81	0.36	1.44	3.37	0.00	60.55	0.40	0.00	0.00	0.00	108.79
8	0.00	0.00	0.00	0.00	0.00	0.00	0.00	0.00	0.00	0.00	0.00	0.00	0.00	0.00	0.00	0.00	0.00	0.00	0.00	0.00	0.00	0.00	0.00	0.00	0.00	0.00
9	195.59	32.76	32.90	11.00	116.78	61.52	0.00	0.00	97.54	36.11	0.00	578.00	0.00	0.00	0.17	0.00	43.05	12.66	67.86	0.00	4.91	119.62	0.00	0.13	1.04	1448.20
10	0.00	0.00	0.00	0.00	0.00	0.00	0.00	0.00	0.00	0.00	0.00	0.00	0.00	0.00	0.00	0.00	0.00	0.00	0.00	0.00	0.00	0.00	0.00	0.00	0.00	0.00
11	0.00	0.00	0.00	0.00	0.00	0.00	0.00	0.00	0.00	0.00	0.00	0.00	0.00	0.00	0.00	0.00	0.00	0.00	0.00	0.00	0.00	0.00	0.00	0.00	0.00	0.00
12	0.00	0.00	0.00	0.00	0.00	0.00	0.00	0.00	0.00	0.00	0.00	0.00	0.00	0.00	0.00	0.00	0.00	0.00	0.00	0.00	0.00	0.00	0.00	0.00	0.00	0.00
13	0.00	55.32	0.00	102.17	13.19	27.28	374.09	0.00	0.00	69.72	21.39	0.00	17.12	41.24	18.43	256.72	0.00	27.64	4.98	4.07	46.29	20.56	105.11	49.88	109.96	1365.19
14	0.00	4.46	0.00	0.00	0.00	0.00	0.00	0.00	0.00	0.85	0.00	0.00	0.00	141.32	0.00	0.00	0.00	0.00	0.00	0.00	0.29	0.00	0.00	46.10	0.00	193.02
15	16.77	0.00	0.00	2.47	0.00	2.70	0.00	0.00	1.56	0.00	0.00	0.00	0.19	0.03	3.18	0.48	0.85	0.05	9.36	0.00	1.23	29.31	0.00	0.00	3.65	71.84
16	0.00	6.94	0.05	0.00	0.00	0.00	0.00	0.00	0.00	0.00	0.00	0.00	0.00	51.71	0.00	0.00	0.00	0.00	0.00	0.00	0.00	0.00	0.00	9.90	0.00	68.60
17	0.00	0.00	0.00	0.00	0.00	0.00	0.00	0.00	0.00	0.00	0.00	0.00	0.00	0.00	0.00	0.00	0.00	0.00	0.00	0.00	0.00	0.00	0.00	0.00	0.00	0.00
18	0.00	0.00	0.00	0.00	0.00	0.00	0.00	0.00	0.00	0.00	0.00	0.00	0.00	0.00	0.00	0.00	0.00	0.00	0.00	0.00	0.00	0.00	0.00	0.00	0.00	0.00
19	0.00	4.22	0.00	0.74	6.41	10.44	0.00	0.00	15.55	19.91	0.00	0.00	0.00	0.00	1.60	0.00	0.00	19.10	0.00	0.00	0.00	0.00	0.00	0.00	0.13	78.10
20	0.00	0.00	0.00	0.00	0.00	0.00	0.00	0.00	0.00	0.00	0.00	0.00	0.00	0.00	0.00	0.00	0.00	0.00	0.00	0.00	0.00	0.00	0.00	0.00	0.00	0.00
21	0.00	0.00	0.00	0.00	0.00	0.00	0.00	0.00	0.00	0.00	0.00	0.00	0.00	0.00	0.00	0.00	0.00	0.00	0.00	0.00	0.00	0.00	0.00	0.00	0.00	0.00
22	0.00	0.00	0.00	0.00	0.00	0.00	0.00	0.00	0.00	0.00	0.00	0.00	0.00	0.00	0.00	0.00	0.00	0.00	0.00	0.00	0.00	0.00	0.00	0.00	0.00	0.00
23	0.00	0.00	0.00	0.00	0.00	0.00	0.00	0.00	0.00	0.00	0.00	0.00	0.00	0.00	0.00	0.00	0.00	0.00	0.00	0.00	0.00	0.00	0.00	0.00	0.00	0.00
24	0.00	0.07	0.00	0.00	2.92	0.10	0.00	0.00	2.52	0.00	0.00	28.00	0.00	0.08	3.52	0.28	0.00	0.00	0.82	0.00	12.99	3.24	0.00	0.37	0.55	55.47
25	0.00	0.00	0.00	0.00	0.00	0.00	0.00	0.00	0.00	0.00	0.00	0.00	0.00	0.00	0.00	0.00	0.00	0.00	0.00	0.00	0.00	0.00	0.00	0.00	0.00	0.00
26	0.00	0.00	0.00	0.11	0.00	3.36	4.21	0.00	1.03	0.00	0.00	33.00	0.00	0.97	0.00	5.69	0.00	0.00	0.00	0.09	7.01	0.00	0.00	0.65	56.12	
27	0.00	0.33	0.00	9.06	0.14	0.65	0.00	0.00	0.00	0.00	0.00	0.00	0.15	0.62	0.13	0.00	0.00	0.00	1.20	96.15	0.00	0.00	3.48	0.00	0.00	111.91
28	0.00	0.00	0.00	0.00	0.00	0.00	0.00	0.00	0.00	0.00	0.00	0.00	0.00	0.00	0.00	0.00	0.00	0.00	0.00	0.00	0.00	0.00	0.00	0.00	0.00	0.00
TOTAL	363.98	821.84	86.11	730.18	213.26	1203.52	520.35	41.67	1712.23	657.77	137.02	7285.00	143.67	332.21	74.14	410.34	216.32	278.44	2118.52	879.60	310.34	1088.94	108.59	420.30	223.40	20377.74
TGA	8707	6760	3044	12703	6244	11155	3609	649	14125	8306	4150	45652	3343	2794	2211	5257	5684	2301	11203	7390	7657	10489	1764	7794	3033	196024
% to TGA	4.18	12.16	2.83	5.75	3.42	10.79	14.42	6.42	12.12	7.92	3.30	15.96	4.30	11.89	3.35	7.81	3.81	12.10	18.91	11.90	4.05	10.38	6.16	5.39	7.36	10.40

01. Gullied and /or ravinous land (Shallow)	06. Waterlogged and Marshy land (Permanent)	11. Shifting cultivation area (Abandoned Jhum)	16. Degraded land under plantation crop	21. Sands-(Semi Stab.-Stab Moder. High 15-40m)	26. Barren Rocky/Stone Waste/Sheet Rock Area
02. Gullied and /or ravinous land (Medium)	07. Waterlogged and Marshy land (Seasonal)	12. Shifting cultivation area (Current Jhum)	17. Sands-(Flood Plain)	22. Sands-(Semi Stab. to Stab. low<15m)	27. Steep Sloping Area
03. Gullied and /or ravinous land (Deep)	08. Land affected by salinity/alkalinity (Strong)	13. Under utilised/degraded notified forest land	18. Sands-(Levees)	23. Sands-(Closely Spaced Inter-Dune Area)	28. Snow covered and/or Glacial Area
04. Land with scrub	09. Land affected by salinity/alkalinity (Moderate)	14. Under utilised/degraded notified forest land(Agri.)	19. Sands-(Coastal Sand)	24. Mining Wastelands	Total Wasteland Area
05. Land without scrub	10. Land affected by salinity/alkalinity (Slight)	15. Degraded pastures/grazing land	20. Sands-(Semi Stab.-Stab>40m)	25. Industrial Wastelands	TGA: Total Geographical Area