

# 29<sup>th</sup>

# ANNUAL REPORT 2012-2013



## National Institute for the Mentally Handicapped

(Department of Disability Affairs, Ministry of Social Justice & Empowerment, Government of India)  
(An ISO 9001:2008 Institution)

Manovikasnagar, Secunderabad -500 009,  
Andhra Pradesh, INDIA.

Phone : 040-27751741- 745 Fax: 040-27750198

E-mail : [nimh.director@gmail.com](mailto:nimh.director@gmail.com)

Website : [www.nimhindia.org](http://www.nimhindia.org); [www.nimhindia.gov.in](http://www.nimhindia.gov.in)





Cover Page and Above : Children from the Special Education Centre of NIMH, HQ engaged in training activities

# 29<sup>th</sup> Annual Report 2012-2013



**National Institute for the Mentally Handicapped**

*Department of Disability Affairs, Ministry of Social Justice & Empowerment,  
Government of India*

(An ISO 9001:2008 Institution)

Manovikas Nagar, Secunderabad -500 009, Andhra Pradesh, INDIA.

Phone : 040-27751741- 745 Fax: 040-27750198

E-mail : [nimh.director@gmail.com](mailto:nimh.director@gmail.com)

Website : [www.nimhindia.org](http://www.nimhindia.org); [www.nimhindia.gov.in](http://www.nimhindia.gov.in)





# CONTENTS

DESCRIPTION	PAGE No.
CHAPTER	
1. <b>INTRODUCTION</b> .....	5
1.1 About the Institute	
1.2 Mental Retardation and its prevalence	
2. <b>OBJECTIVES</b> .....	7
2.1 NIMH Objectives	
2.2 Organizational setup	
2.3 Functioning of Regional Centres	
3. <b>HUMAN RESOURCE DEVELOPMENT</b> .....	10
3.1 Long-term Courses	
3.2 Description of the Academic Programmes	
3.2.1 M.Phil. in Rehabilitation Psychology	
3.2.2 M.Sc. Disability Studies (Early Intervention)	
3.2.3 Master in Disability Rehabilitation Administration	
3.2.4 M.Ed. Special Education (Mental Retardation)	
3.2.5 Postgraduate Diploma in Early Intervention	
3.2.6 B.Ed. in Special Education (Mental Retardation)	
3.2.7 Diploma in Early Childhood Special Education (Mental Retardation)	
3.2.8 D.Ed. Special Education (Mental Retardation)	
3.2.9 Diploma in Vocational Rehabilitation (Mental Retardation)	
3.2.10 Diploma in Community Based Rehabilitation	
3.3 Certificate Courses	
3.4 Short-term Training Programmes	
4. <b>RESEARCH AND DEVELOPMENT</b> .....	15
4.1 Research projects (2012-13)	
4.2 Research Publications	
4.3 Seminars/ Conferences/ Workshops	
5. <b>NIMH PUBLICATIONS</b> .....	21
5.1 Publications	
5.2 Distribution of Publications	
5.3 Digitalization of NIMH publications	
6. <b>SERVICES</b> .....	22
6.1 Services	
6.2 General Services	
6.3 Special services	
6.4 Family Cottage Services	
6.5 Special Education Centre	
6.6 Parent Training Programmes	
6.7 Respite Care Services	
6.8 Feedback from the Clients on NIMH General Services	
7. <b>NIMH MODEL SPECIAL EDUCATION CENTRE, NEW DELHI</b> .....	38
7.1 7.1 School Activities	
7.2 Educational tours & picnics	
7.3 Other events	

DESCRIPTION	PAGE No.
8. <b>CONSULTANCY AND TECHNICAL SUPPORT</b> .....	41
8.1 Technical Appraisal of NGO Applications for Grant-in-aid from Government of India, MSJ&E	
8.2 Rehabilitation Council of India (RCI)	
8.3 Special Employment Cell	
9. <b>DOCUMENTATION AND DISSEMINATION</b> .....	42
9.1 Posters and Flip charts	
9.2 Website Digitalization	
10. <b>EXTENSION AND OUTREACH PROGRAMMES</b> .....	43
10.1 Assistance to Disabled Persons for purchase/ fitting of Aids/ Appliances (ADIP) Scheme	
10.2 Programmes in the North-East Region	
10.3 Community Based Programmes (CBP)	
10.4 Orientation Programmes	
10.5 Exhibitions	
11. <b>OTHER ACTIVITIES AND PROGRAMMES</b> .....	49
11.1 National/Regional/State Level Programmes	
11.2 Celebrations of International Day of Persons with Disabilities	
11.3 Annual Day Celebrations of NIMH	
11.4 Block Placement of Students (Internship)	
11.5 Participation in the Republic Day Parade	
11.6. VIP Visits	
12. <b>ADMINISTRATION</b> .....	55
12.1 Staff Strength	
12.2 Appointments/ Retirements	
12.3 Activities and achievements of vigilance unit	
12.4 Hindi implementation	
12.5 Construction of buildings (Estate)	
12.6 Council Meetings	
12.7 Right to Information Act 2005	
13. <b>INSTITUTE COMMITTEES</b> .....	59
14. <b>ACCOUNTS AND FINANCE</b> .....	60
<b>APPENDICES</b>	
1. NIMH organogram chart .....	72
2. Short Term Training Programmes .....	73
3. Details of ADIP Scheme Inspections .....	78
4. Programmes in North East .....	83
5. List of Members of General Council .....	89
6. List of Members of Executive Council .....	91
7. List of Members of Academic Committee .....	92
<b>Photographs</b> .....	93

# INTRODUCTION

## 1.1 About the Institute

The National Institute for the Mentally Handicapped is a registered society established in the year 1984 as an autonomous body under the Ministry of Social Justice and Empowerment, Government of India. The institute is an apex body having tripartite functions of training, research and services in the field of mental retardation in the country. For 29 years, the Institute has been making significant advances in building capacities to empower persons with mental retardation.

Based on the latest developments and recent trends in the field, the Institute strives to organize new programmes and make innovations through research and development. National and International collaborations entered into by the Institute in its various activities reflect the global characteristics of the organization. The activities of NIMH are planned in accordance with the mandates of United Nation's Convention on the Rights of Persons with Disabilities (UNCRPD), the Legislative Acts and the National Policy promulgated for the Persons with Disabilities.

NIMH strives to be an Institute of excellence focusing on high standards in every aspect of its functioning to bring equality and dignity in the lives of persons with mental retardation which is endorsed by ISO 9001-2008 certification.

NIMH has made noticeable progress in Human Resource Development, Research and Development and Direct Therapeutic Services in its efforts to improve the quality of life of persons with mental retardation

## 1.2 Mental Retardation and its prevalence

Mental retardation ranks among the world's most complex and challenging problems. It is a multi-dimensional phenomenon involving bio-psycho-social factors.

It is a condition of arrested or incomplete development of the mind, which is especially characterized by impairment of skills manifested during the developmental period, skills which contribute to the overall level of intelligence, i.e., cognitive, language, motor and social abilities.

According to National Sample Survey Organization's (NSSO) 58<sup>th</sup> Round report published in 2003, in every one lakh persons in our total population, 94 persons are having mental retardation. This translates to around 11.3 Lakhs of affected persons are present in the country today. The information on prevalence of disability/M.R. by gender and total persons is presented in **Table 1**. The number of persons with disability and mental retardation as estimated by NSSO in its 58<sup>th</sup> round is presented in **Table 1.1**.



**Table 1 : Number of persons with mental retardation per one lakh persons for each gender – All India**

Prevalence / Persons	Any Disability*			Mental Retardation		
	Male	Female	Total	Male	Female	Total
100000	2000	1493	1755	115	72	94

\*at least one of mental, visual, hearing, speech and loco-motor disability

**Table 1.1: Estimated Number of disabled persons**

Type of disability	Male	Female	Total
Any Disability	1,08,91,300	75,99,700	1,84,91,000
Mental retardation	6,25,800	3,68,900	9,94,600
Population*	54,69,16,600	38,50,51,500	105,72,48,100

\* Estimated by using survey proportions on the projected population

State/UT wise and Sector wise prevalence rate per one lakh persons as per NSSO 58th round is presented in **Table 2**. It is observed that the UT of Lakshadweep and the states of Goa and Kerala have high prevalence of mental retardation, whereas Arunachal Pradesh, Tripura and Sikkim recorded a low prevalence in the country.

**Table 2 : Number of persons with mental retardation per one lakh persons in each State/ UT**

State	Prevalence	State	Prevalence
Goa	240	Madhya Pradesh	72
Kerala	194	Bihar	70
Mizoram	127	Chandigarh	64
Himachal Pradesh	118	Meghalaya	63
Punjab	116	Jharkhand	63
West Bengal	114	Nagaland	54
Tamil Nadu	113	Manipur	47
Jammu & Kashmir	104	Assam	45
Uttaranchal	104	Delhi	44
Odisha	104	Sikkim	39
Maharashtra	99	Tripura	24
Karnataka	98	Arunachal Pradesh	11
Pondicherry	95	<b>Union Territories (UT)</b>	
<b>All India</b>	<b>94</b>		
Gujarat	93	<b>UTPrevalence</b>	
Haryana	92	Lakshadweep	249
Uttar Pradesh	92	<i>All India</i>	94
Andhra Pradesh	90	Andaman & Nicobar	78
Chhattisgarh	84	D & N Haveli	67
Rajasthan	82	Daman & Diu	58



# OBJECTIVES

NIMH, at its inception itself projected multifarious activities to enhance the quality of life of persons with mental retardation. Accordingly, the aims and objectives of the society have been spelt out as follows:

1. To conduct, sponsor, coordinate or subsidize research in to all aspects of the education and rehabilitation of persons with mental retardation.
2. To undertake, sponsor, coordinate or subsidize research into bio-medical engineering leading to the effective evaluation of aids/ suitable surgical or medical procedure or the development of new aids.
3. To undertake or sponsor the training of trainees and teachers, employment of officers, psychologists, vocational counsellors and such other personnel as may be deemed necessary by the Institute for promoting the education, training or rehabilitation of persons with mental retardation.
4. To distribute or promote or subsidize the manufacture of proto-types and distribution of any or all aids designed to promote any aspects of the education, rehabilitation or therapy of persons with mental retardation.

From the above aims and objectives, the following functional objectives are evolved:

## 2.1 NIMH Objectives

- To create manpower and develop human resources for delivery of services to persons with mental handicap.
- To identify, conduct and coordinate research in the area of mental retardation in the country.
- To develop appropriate models of care and habilitation for the mentally retarded persons suitable to Indian culture.
- To provide consultancy services to voluntary organizations in the area of mental retardation.
- To serve as a documentation and information centre in the area of mental retardation.
- To develop community-based rehabilitation services in the rural and low income, needy population.
- To undertake extension and outreach programmes in the field of mental retardation.

## 2.2 Organizational setup

National Institute for the Mentally Handicapped (NIMH) has its headquarters at Secunderabad, Andhra Pradesh. The Institute has six departments, namely Adult Independent Living, Community Rehabilitation and Project Management, Library and Information Services, Medical Sciences, Rehabilitation



Psychology and Special Education. There are three Regional Centres each located at New Delhi, Kolkata and Navi Mumbai. NIMH has a Model Special Education Centre in New Delhi.

The core activities of the Institute are supported by the administrative section. The organizational chart depicting the overall functioning of NIMH is shown in **Appendix 1 (Page 72)**.

## 2.3 Functioning of Regional Centres

### 2.3.1 Regional Centre, New Delhi (RC, New Delhi)

NIMH Regional Centre, New Delhi was established in February, 1986 at Kasturba Niketan, Lajpat Nagar -II, New Delhi – 110024, to provide the best educational climate where each and every professional can develop their maximum potential in the field of mental retardation. The centre runs two long-term courses approved by RCI namely:

- A one-year B.Ed. Special Education (Mental Retardation)
- A two-year Diploma in Education (Special Education)

It also conducts short-term programmes for professionals working in the field of mental retardation every year. In addition to this, the centre provides services to the clients having delayed development/ mental retardation. The centre conducts awareness camps and screening camps as part of its extension and outreach activity. The centre also provides technical support to local NGOs working in the field of mental retardation. The centre had set up “ANKUR”, an Early Intervention Centre in 1990 for providing services to children below 5 yrs of age. RC, New Delhi also extends its support to students from different professional colleges for their internship.

### 2.3.2 Regional Centre, Kolkata (RC, Kolkata)

NIMH Regional Centre, Kolkata was established in March, 1986 in the campus of National Institute for the Orthopedically Handicapped, Bonhooghly, B.T.Road, Kolkata- 700 090. The centre runs 3 long-term courses approved by RCI namely:

- A one-year Degree in B.Ed. Special Education (MR)
- A two-year Diploma in Education (Special Education)
- A one-year Diploma in Vocational Rehabilitation (MR)

The centre conducts short term training programmes for professionals and parents every year. There is a special clinic for early identification and intervention for overall development of the child at risk of mental retardation. Services in the areas of special education, vocational training and early intervention are provided in the centre. Placement of students is allowed for undergraduate and postgraduate students from the areas related to the field of mental retardation. The centre conducts awareness camps and screening camps as a part of its extension and outreach activity. The centre also provides technical support to NGOs working in the field of mental retardation.



### 2.3.3 Regional Centre, Navi Mumbai (RC, Navi Mumbai)

This Regional Centre of the NIMH was started in the campus of Ali Yavar Jung National Institute for the Hearing Handicapped, Mumbai, in the year 1987. This centre was initiated to cater to the needs of the Western Region covering the states of Rajasthan, Gujarat, Maharashtra, Madhya Pradesh, Goa, Lakshadweep and Daman & Diu. With a view ensuring expansion of activities, the Centre was shifted to Navi Mumbai in the year 2004. At present, the Centre works from two rental premises viz., Belapur and Kharghar. The Administrative office, Library and Long-term and short-term training programmes are conducted at the Belapur premises and General and special services are provided at the Kharghar premises. The centre conducts three long-term courses namely:

- B.Ed. Special Education (MR)
- Diploma in Early Childhood Special Education
- Diploma in Vocational Rehabilitation

The centre offers services in the area of Special Education, Psychology & Behaviour Management, Speech & Language and Occupational Therapy to the persons with mental retardation. Short-term programmes, Parent Training Programmes, Awareness programmes and Camps are being conducted through this centre. The RC, Navi Mumbai is now looking forward to construct its own premises with State-of-art facilities for Human Resource Development and for providing services for persons with mental retardation.

### 2.3.4 NIMH Model Special Education Centre, New Delhi (NIMH MSEC, New Delhi)

NIMH Model Special Education Centre (MSEC) was established in 1964 by Govt. of India at Kasturba Niketan, Lajpat Nagar-II, New Delhi - 110024. The centre was initiated with an intention to provide specialized and comprehensive services to the persons with mental retardation. The centre has been functioning under NIMH since 1986. The school is equipped with qualified professionals providing quality services to the persons with mental retardation. The centre extends its support in providing education and training to empower persons with mental retardation. It has a strength of 77 (53 nonresidential and 24 residential). The service activities include psychological assessment, parent counseling, home-based training, short-term training programmes for professionals and parent and sibling training programmes and placement of outside students for training. The centre also conducts regular curricular and co-curricular activities for the children enrolled at the centre.

# HUMAN RESOURCE DEVELOPMENT

Human Resource Development aims to achieve the most important objective of competency development and capacity building at all levels. As one of its prime objectives, NIMH is engaged in a continuous process of competency development in people and creation of trained manpower through its HRD programmes to enhance the growth of individuals with disabilities. The policies and programmes of the institute are designed to support and sustain opportunities for continuing acquisition of knowledge, skills, attitudes and competencies which are beneficial to the individual and the society.

In human resource development, the major activities are to conduct long-term and short-term courses, training, workshops and continuing education programmes for professional enculturation. NIMH organizes national level programmes for professionals, parents and persons with mental retardation on important relevant themes to build awareness and penetrative thinking in the field of intellectual disability.

An important priority area of HRD is manpower development and training facilities for teacher training programmes in rehabilitation of persons with mental retardation. It is estimated that a classroom teacher (special educator) can handle not more than 10 children with mild mental retardation. More than 70% of the children with mental retardation fall under this category. This would require nearly 80,000 classroom teachers. Since management of mental retardation needs a multi-disciplinary team, there is requirement of other professionals. The number of trained teachers available in our country is less than 7000, and similar is the status of other rehabilitation professionals. To reduce this wide gap, human resource development in this sector is of paramount importance.

## 3.1 Long-term Courses

In order to promote human resource development, NIMH conducted 10 long-term training programmes (4 Diploma courses, 1 Graduate course and 5 Master's courses which include 1 M.Phil Programme) approved by Rehabilitation Council of India in the Institute's headquarters and regional centres. These courses are identified and developed as per the need felt in this area.

Year	Courses	Intake Capacity	Enrollment
2011-12	10	394	316 (80.2%)
2012-13	10	415	325 (78.3%)

A total of 325 candidates against the strength of 415 were enrolled for the year 2012-13 in different courses and the details of enrollment (course-wise) is presented in **Table 3**.

**Table 3 : Enrollment of Students in Long-term Courses during 2012-13**

Sl. No.	Course	Centers	Duration (years)	University Affiliation	2012-13	
					Intake capacity	Enrolment
1.	M.Phil in Rehabilitation Psychology	NIMH HQ	2	OU	15	13 (86.7%)
2.	Master in Disability Rehabilitation Administration	NIMH HQ	2	JNTU	15	5 (33.3%)
3.	M.Ed Special Education (Mental Retardation)	NIMH HQ	1	OU	31	30 (96.8%)
4.	M.Sc Disability Studies (Early Intervention)	NIMH HQ	2	OU	15	8 (53.3%)
5.	Postgraduate Diploma in Early Intervention	NIMH HQ	1	OU	15	2 (13.3%)
6.	B.Ed in Special Education (Mental Retardation)	NIMH HQ, Navi Mumbai, Kolkata, Delhi	1	OU	25	22 (88.0%)
				MBU	25	23 (92.0%)
				WBSU	25	25 (100.0%)
				GGIPU	25	25 (100.0%)
7.	Diploma in Early Childhood Special Education (Mental Retardation)	NIMH HQ, Navi Mumbai	1		25	23 (92.0%)
				IGNOU	31	19 (61.3%)
8.	D.Ed. Special Education (Mental Retardation)	Delhi, Kolkata	2	IGNOU	25	25 (100.0%)
					31	31 (100.0%)
9.	Diploma in Vocational Rehabilitation (Mental Retardation)	NIMH HQ, Navi Mumbai, Kolkata	1	IGNOU	25	19 (76.0%)
					31	14 (45.2%)
					31	31 (100.0%)
10.	Diploma in Community-Based Rehabilitation	NIMH HQ,	1	IGNOU	25	10 (40.0%)
<b>Total</b>		<b>17*</b>			<b>415</b>	<b>325 (78.3%)</b>

OU : Osmania University, Hyderabad  
GGIPU : Guru Gobind Singh Indraprastha University, Delhi  
IGNOU : Indira Gandhi National Open University  
JNTU : Jawaharlal Nehru Technological University, Hyderabad  
WBSU : West Bengal State University  
MBU : Navi Mumbai University; KU: Kolkata University

\* All together, NIMH conducts 17 Long-term Courses.



## 3.2. Description of the Academic Programmes

### 3.2.1 M.Phil. in Rehabilitation Psychology

This is a two-year academic course affiliated to Osmania University, Hyderabad. This course is designed to create rehabilitation psychologists of highest cadre who will be capable of training master trainers and conduct research in psychological aspects to provide comprehensive services to persons with mental retardation and other disabilities. The course has inputs in neurobiology, psychology, special education, speech-language pathology, physiotherapy, occupational therapy and community-based rehabilitation.

### 3.2.2 M.Sc. Disability Studies (Early Intervention)

This two-year course affiliated to Osmania University, Hyderabad, was introduced during 2009 -10. The main objective of the course is to prepare a cadre of training professionals capable of transferring the required skills and technology to implement programmes in early identification and early intervention for at-risk and disabled infants and toddlers.

### 3.2.3 Master in Disability Rehabilitation Administration

This two-year course has been under MoU with Jawaharlal Nehru Technological University, Hyderabad since the academic year 2004-05. This four-semester mode of training program is designed to prepare qualified and competent disability rehabilitation administrators for successfully managing the disability rehabilitation and research organizations in the country.

### 3.2.4 M.Ed. Special Education (Mental Retardation)

M.Ed. Special Education (Mental Retardation) course of one year duration, affiliated to Osmania University, Hyderabad, aims at developing professionals at faculty level in special education.

### 3.2.5 Postgraduate Diploma in Early Intervention

Children with developmental delays will show significant improvement if they are detected early and professional services rendered at an early age. These services are trans-disciplinary in nature and holistic in approach covering child development, physiotherapy, occupational therapy, speech therapy and family intervention. This course is affiliated to Osmania University, Hyderabad.



Long Term Programme - classes in progress



### 3.2.6 B.Ed. in Special Education (Mental Retardation)

Keeping in view the need for special teachers at various levels, NIMH conducts one-year B.Ed. in Special Education (Mental Retardation) at its headquarters affiliated to Osmania University, Regional Centre, Kolkata affiliated to West Bengal State University, Regional Centre, Navi Mumbai affiliated to Mumbai University and Regional Centre, New Delhi affiliated to Guru Gobind Singh Indraprastha University, Delhi.

### 3.2.7 Diploma in Early Childhood Special Education (Mental Retardation)

Early Childhood Special Education (ECSE) focuses on children below 6 years of age and has various modes and approaches in imparting training, based on the ability of the target group. This demands training of human resource to reach out to the families by being a home visitor or itinerant teacher, to manage children with disabilities in regular or special pre-schools. Diploma in Early Childhood Special Education course is offered at NIMH, Secunderabad, Regional Centre, Navi Mumbai.

### 3.2.8 D.Ed. Special Education (Mental Retardation)

This two-year diploma course aims at preparing special teachers, who are competent in screening, assessment, education and training of children with mental retardation and associated disabilities. The conduct of examination, nominated by RCI, has been handed over to NIMH, Secunderabad.

### 3.2.9 Diploma in Vocational Rehabilitation (Mental Retardation)

This one-year course prepares vocational instructors in the field of mental retardation, and is offered at NIMH, Secunderabad and at Regional Centres in Kolkata and Navi Mumbai.

### 3.2.10 Diploma in Community Based Rehabilitation

This one-year course focuses on development of Community-Based Rehabilitation (CBR) management programmes, human resource development, training, education, rehabilitation, employment and social development of persons with disabilities. It aims at developing trans-disciplinary models and strategies for social rehabilitation to meet the needs of diverse groups of people with disabilities.

## 3.3 Certificate Courses

Feedback from the field indicated that there is a need for intensive training on assessment, therapeutics and job placement to special educators and allied professionals working for rehabilitation of persons with mental retardation. To achieve this objective, NIMH conducts certificate courses of one month duration in 2012-13. Three such programmes were conducted benefiting 27 professionals. The details are presented in **Table 4**.

**Table 4 : Certificate courses conducted during 2012-13**

Sl. No.	Training programme	Conducted by	Days	Duration	Professionals
1	Certificate Course on Therapeutics	NIMH RC, Navi Mumbai	1 month	3 <sup>rd</sup> to 28 <sup>th</sup> Dec. 2012	14
2	Inclusive Education	NIMH RC, Kolkata	15 days	6 <sup>th</sup> to 28 <sup>th</sup> December 2012	08
3	Certificate course for professionals on early Intervention	NIMH, Secunderabad	1 month	02.07. 2012 to 27.07.2012	5
				Total	<b>27</b>

### 3.4 Short-term Training Programmes

The short-term training programmes (STP) are essentially designed as in-service training for professionals and personnel working in the field of rehabilitation for persons with mental retardation. During the year 2012-13, the Institute conducted 45 short-term training programmes covering 1293 professionals. The programme vs professionals ratio is as follows:

Year	Programmes	Target	Professionals	Ratio
2011-12	48	--	839	1:17
2012-13	45	950	1293	1:29

Short term programmes, usually conducted for one week or more for professionals registered with RCI, are equivalent to Continuing Rehabilitation Education (CRE) programme of Rehabilitation Council of India. The details of short-term courses are given in **Appendix - 2 (Page No. 73)**.



Participants of CBR program at CR&amp;PM



Exposure on physiotherapy service to the STP participants

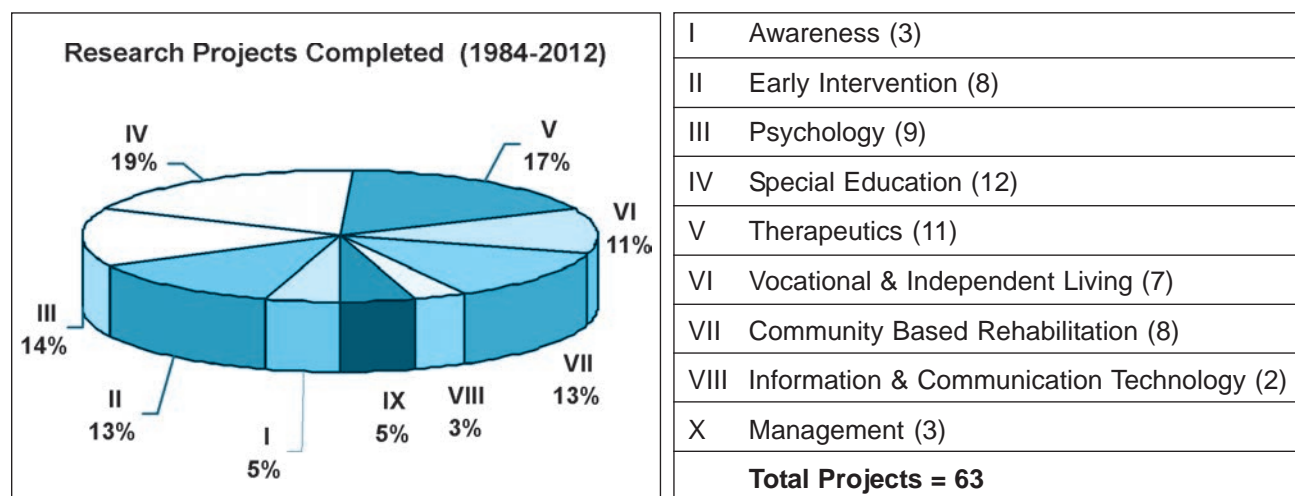


# RESEARCH AND DEVELOPMENT

Research and Development is one of the important objectives of NIMH. An analysis of the R & D Projects completed at NIMH during the last 29 years reveals that major focus of the R & D has been in the area of Applied Research. Considering the research requirement in the field, proposals are presented and approved by designated committees such as the Academic Council and Ethics Committee of the Institute before initiating the project. The proposals are initially discussed at Departmental level and at regular Faculty Meet level before submitting them to the Academic Council. Further, all the R&D projects are submitted for the approval of the Ethics Committee of NIMH. So far, 63 research projects have been completed in collaboration with various national and international agencies such as US-India Rupee Fund, UNICEF, UNDP, ICSSR and S&T Mission Mode, in addition to the Projects funded by the Institute. The outcome of the completed Research Projects are as follows:

Sl.No.	Outcome	Number
1.	Books published	48
2.	Pamphlets/Booklets	24
3.	Posters	16
4.	Software CDs	12
5.	Screening Tools	11
6.	Radio Spots	11
7.	Service Models	5
8.	Video Films	3

## Categorization of Completed Research Projects





The Academic Committee Meeting was held on 1<sup>st</sup> February 2013.

## 4.1 Research projects (2012-13)

During the year 2012-13, ten (10) projects are ongoing, of which two projects are in collaboration with other agencies and two are in non-project mode..

### 4.1.1 Description of the ongoing Research Projects of 2012-13:

#### 4.1.1.1 Institute funded Projects (6):

**1. Effectiveness of sensory integration therapy on sensory processing & adaptive behaviour of children diagnosed as Autism with or without Mental retardation (A comparative study):**

The primary objective of the study is to develop an assessment tool to evaluate the sensory processing dysfunctions in children with autism spectrum disorders and to investigate the correlation between sensory processing dysfunctions and occupational performance of the sample.

It also aims to develop a sensory integration therapy module for children with autism spectrum disorders. A manual on sensory integration therapy for parents and professionals is also intended to come out of this study.

**2. Cluster-based placement service:**

Cluster-based placement service enables persons with mental retardation and their parents/families be in touch with the community resources, which are identified and generated for their rehabilitation.

Very often, services tend to be concentrated in well-to-do urban localities. To overcome this lopsided approach, a community orientation is necessary, so that services are available to large section of society in their own vicinity. With this background the cluster-based placement service program is proposed,

**3. Development of toolkits for assessing work competencies among post-secondary and prevocational students**

The purpose of the study is to develop a comprehensive toolkit for assessing work competencies of children with mental retardation in a systematic manner. Attempts are made to ease the process of assessment and make it more appropriate. The developed toolkit will come in handy for the teachers working in the field. It serves as a good reference for the trainees in preparing their assessment kits and gives direction for the TLM preparation. The objectives of the study are: a) to develop a work competency checklist for secondary and prevocational students with Mental Retardation and b) to develop a toolkit for assessing work competencies of secondary and prevocational students with Mental retardation. The Outcome of the study will be: 1) Checklist for work competency assessment and 2) A comprehensive toolkit.



#### **4. Development of an Indian Test of Intelligence**

There is a plethora of tests and tools available for assessment of intelligence suitable for Indian conditions. Most of these tests are complex, time-consuming and need highly trained specialists. There is a dearth of such specialists in large numbers in our country; hence many persons with mental retardation have not been able to access government concessions and social benefits. The aim of this study, therefore, is to develop an Indian Test of Intelligence. The test so developed will be useful for assessment of intellectual level of persons with mental retardation so that they can avail government concessions and social benefits. The test can also be used for planning intervention programs based on strengths and weaknesses found in an individual.

#### **5. Development of a CBR model for persons with disabilities**

Community-Based Rehabilitation focuses on enhancing the quality of life of persons with disabilities and their families by meeting their basic needs and ensuring their inclusion and equal participation in the community. CBR activities were initiated in the 80's and evolved since then to become a multi-sectoral strategy empowering persons with disabilities and their families. However, it was noticed that there was a lack of accurate database at the Gram Panchayat level. The purpose of this study is to identify the persons with disability, severity of disability, economic status of the family and services available at the Gram Panchayat level. This would be used for developing a uniform model for CBR activities across the regional and cultural diversities in the country.

#### **6. A Study on Dental Problems in Persons with Mental retardation**

Dental care is consistently reported as one of the top medical needs of persons with mental retardation. Children and adults with mental retardation have poor oral health when compared to the general population. They require assistance or support from caregivers to maintain their oral health. This study will find out the dental problems seen in persons with mental retardation attending NIMH. This will enable us to document the frequency of different dental problems seen in our clientele and plan to provide better dental services for them.

##### **4.1.1.2 Projects in Collaboration with Other Agencies (2):**

#### **7. Adaptable e-Learning Accessibility model for the disabled**

E-learning has been perceived as one of the most comfortable mode of learning for the children with mental retardation. But the issues of outline, content and accessibility have not been addressed effectively and it remained an elusive asset for the children with mental retardation. Accessibility, specifically in the domain of e-learning has its own demands which have to be specifically addressed through proper implementation strategies and Accessibility Models. This study is committed to provide e-learning, environment and a model that is accessible to the individuals with mental retardation concentrating on the cognitive and learning deficiencies of individuals with mild mental retardation and Autism Spectrum Disorders. The project aims at working closely with educators and the organizations working for persons with mental retardation to produce effective e-learning environment for them.

NIMH is collaborating with Centre for Development of Advanced Computing (C-DAC), an R&D organization of the Department of Electronics and Information Technology (DeitY), Ministry of Communications & Information Technology (MCIT), Govt. of India.



## **8. Molecular Genetic Study of Beta Amyloid Precursor Protein (APP) in different Neurological Disorders including Autism**

This is an ICMR approved and funded project testing hypothesis that in the four neurological conditions namely: Alzheimer's disease, Downs Syndrome, Fragile X Syndrome and Autism Spectrum Disorders, the basic defect may lie in the manner the Amyloid Precursor Protein (APP) gene is inherited and metabolized. The work would examine the mutations in hotspots of APP gene in individuals having these conditions. The DNA repair capacity will be examined for each of these four conditions. As the incidence of autism has been reported to be on the increase and its cause is unclear till date, this study will highlight the role of APP and DNA repair in the pathogenesis of Autism. The individuals with Downs syndrome, Fragile X syndrome and Autism attending NIMH have been recruited into this study.

NIMH is collaborating with Vasavi Medical and Research Centre, Hyderabad.

### **4.1.1.3 Projects continued in non-project mode - (2) (without financial implications):**

#### **9. Facilitation of differentiation ability in persons with mental retardation – A cognitive approach:**

The study aims to measure the construct and types of response inhibition and behavioural inappropriateness or inadequacies in persons with mental retardation and find the efficacy of a cognitive training program in addressing this problem (this has been delisted from the project mode)..

#### **10. Effects of collaborative virtual environment (CVE) on electrophysiology of Theory of Mind (ToM) in children with Autism and Mental Retardation**

The theory of mind impairment describes a difficulty someone would have with perspective taking. This is also sometimes referred to as mind-blindedness. This means that individuals with theory of mind impairment would have a hard time seeing things from any other perspective than their own.

This study aims to investigate theory of mind for the Autistic group with or without mental retardation and children with mental retardation to note variance in belief vs. reality (this has been delisted from the project mode).



## 4.2 Research Publications

The research papers published by NIMH faculty during the year 2012-13 are presented in **Table 5**.

**Table 5 : List of Papers published by NIMH Faculty**

Sl. No.	Authors	Title	Year	Journal
1	Madhu P., Mamidala, Anupama Polinedi, Praveen K.PTV, Rajesh N., <b>Om Sai R., Vallamkonda</b> , V. Rajesh Duane, Niche Signal, Vida Rajesh	“Maternal hormonal interventions as a risk factor for Autism Spectrum Disorder: an epidemiological assessment from India”	2013	Journal of Biosciences
2	Madhu Poornima Mamidala, Anupama Polinedi, Praveen Kumar PTV, N. Rajesh, <b>Om Sai Ramesh Vallamkonda</b> et al.	Prenatal, perinatal and neonatal risk factors of Autism Spectrum Disorder: A comprehensive epidemiological assessment from India	2013	Research in Developmental Disabilities 34 (2013) 3004-3013. (International)
3	<b>Dr.G.Srikrishna</b> et.al.	District Institute for Education & Training: Teachers’ Educators readiness of inclusive education in Sikkim	2013	Journal of Disability Management and Special Education Vol.3 No.1 January 2013-pages 49-55.
4	Najar, S.A., Saini, N., Bhat, M.A. & <b>Mohapatra, B</b>	Effectiveness of positive behavioural support in managing the self injurious Management Studies, behaviour in children with mental retardation.	2012	International Journal of Education & 2(4), 404-408
5	<b>Dr.G.Srikrishna</b> et.al.	Individuals with Average Intelligence & Mental Retardation: Effects of Intelligence on Behaviour & Social Maturity	2012	Lambert-Germany Publication
6	R.M. Yogeswara, <b>Sivakumar</b> et al.	Virtual Technologies in Intervention Programs for Autism Children	2013	International Journal on Emerging Technologies 4(1) : 39-43(2013)



### 4.3 Seminars/ Conferences/ Workshops

During the year the NIMH faculty attended/coordinated various scientific conferences/ Seminars/ Workshops. The details are given in **Table 6**.

**Table 6 : Scientific Conferences / Seminars / Workshops attended / coordinated by NIMH Faculty**

Name of the faculty	Date	Area	Place	Remarks
Dr. Om Sai Ramesh	27 April 2012	Workshop on ICF Application for persons with MR	NIMH, Secunderabad	Coordinated
Mrs. Janhavi A. Warra	27 April 2012	ICF Workshop	NIMH, Secunderabad	Attended
Mrs. Janhavi A. Warra	17 <sup>th</sup> January 2013	INCHEON Strategy	NIMH, Secunderabad	Attended
Mrs. Janhavi A. Warra	7-8 February 2013	“Development of content for Secondary education for students with intellectual disability” (IEDSS)	NIMH, Secunderabad	Attended
Dr. Nibedita Patnaik	7-8 February 2013	“Development of content for Secondary education for students with intellectual disability” (IEDSS)	NIMH, Secunderabad	Coordinated
Mrs. V.R.P. Sheilaja	7-8 February 2013	“Development of content for Secondary education for students with intellectual disability” (IEDSS)	NIMH, Secunderabad	Attended
Mr. B. Ashok	21 February 2013	Follow-up workshop on INCHEON Strategy	NIMH, Secunderabad	Coordinated

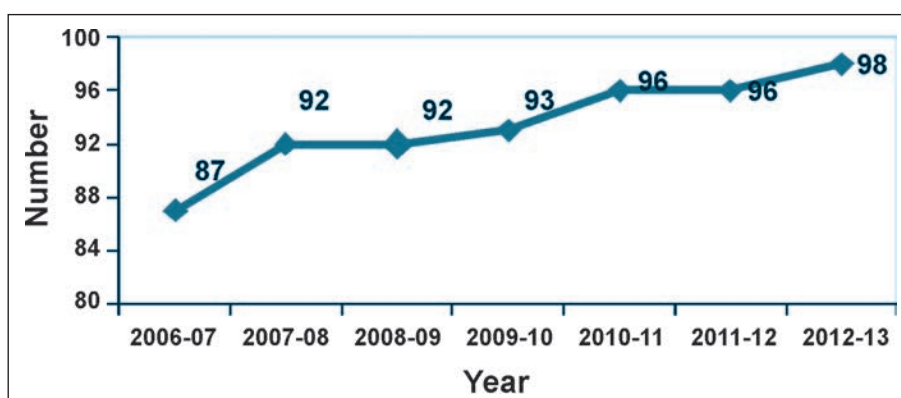
# NIMH PUBLICATIONS

## 5.1 Publications

NIMH, from its inception itself, upheld the practice of publishing its findings from clinical studies and R&D activities in the form of printed books, video films and CDs. In addition to this, information collected from authentic sources have been printed as pamphlets and leaflets.

- The total number of original publications was **98** as on 31st March 2013. The trend of increase in the number of NIMH publications is illustrated in **Graph 1**.

**Graph 1 : Growth of NIMH Publications**



## 5.2 Distribution of Publications

Every year NIMH gets requests from various sources for the books and other materials which are published by the Institute. These materials are distributed by levying a nominal charge on printing and handling.

The distribution of NIMH publications during the year 2012-13 is given in **Table 7**.

**Table 7: Distribution of NIMH Publications**

Title	2011-12	2012-13
Publications (98 titles)	7089	20747
Video films (VHS/ CD format)	152	228
Software programs	28	435

## 5.3 Digitalization of NIMH publications

The printed books of NIMH have been uploaded in the website of NIMH so that they can be accessed by the users.



# SERVICES

## 6.1 Services

Persons with mental retardation generally need a plethora of services to make them functionally as independent as possible and improve their quality of life. NIMH provides a spectrum of service delivery systems for the rehabilitation of persons with mental retardation. It is common practice to use an eclectic approach incorporating a combination of service models best suited to individual needs.

NIMH has evolved its extension of services based on life cycle approach encompassing infants, children, youth and adults as indicated below:

- Early identification, early intervention and prevention of disabilities
- Minimization of adverse effect of developmental delays and acceleration of rate of development of children
- Preschool education
- Special education programmes
- Vocational training and job placement
- Independent living skills

The services are also focused on severely and profoundly affected persons with mental retardation in the unit termed as 'Manoranjanam' and a Multi-Sensory Unit which offers intense sensory stimulations for children with multiple disabilities.

## 6.2 General Services

The Institute provides assessment and evaluation services through case history taking, physical and medical examinations, intellectual and developmental assessment, special educational assessment, therapeutic needs assessment, vocational assessment and basic biochemical screening and examination. After a comprehensive assessment, management plan and intervention packages are developed. Parental counseling is done in order to provide emotional support by explaining the nature of child's condition and his/ her level of functioning. A home- based training programme and demonstration for the same are given to parents for management and rehabilitation. During 2012-13, a total of **8704** clients were seen at NIMH, Secunderabad and at its Regional Centres located in New Delhi, Kolkata and Navi Mumbai. The details of services provided to new clients during the year 2012-13 are shown in **Table 8 and Graph 2**. Highlights of general services during 2012-13 are shown in **Graph 3**. The total number of new clients registered for the year 2012-13 is more than (16%) that for the year 2011-12 and more than 12% on the target.





Registration of New Clients		
Year	Target	Achieved
2011-12	-	7486
2012-13	7738	8704

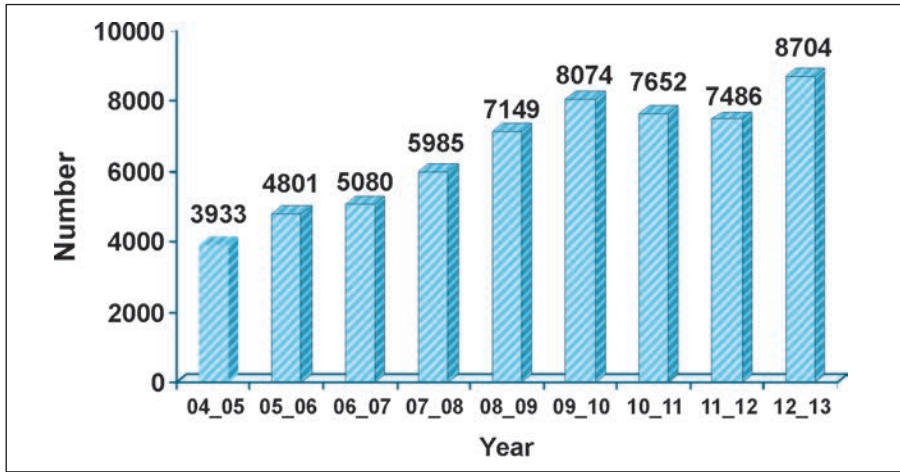
**Table 8 : Services provided to new clients during the year 2012-13**

Activities	N=7,486		N= 8,704	
	2011-12	%	2012-13	%
General Ser4vices	7486	100.00	8704	100.00
Medical/Psychiatry	5779	77.18	5943	68.28
EIS/Pediatrics	1252	16.72	1503	17.27
Physiotherapy	1850	24.71	1943	22.32
Biochemistry	2145	28.65	2092	24.03
Speech Therapy	993	13.26	3307	37.99
EEG(Electroencephalogram)	406	5.42	278	3.19
Multiple disability	592	7.91	941	10.81
Nutrition	194	2.59	218	2.50
Hydrotherapy	17	0.23	18	0.21
Special Education	5974	79.78	6341	72.85
PMR	3	0.04	0	0.00
Autism/LD	241	3.22	408	4.69
Multi sensory	225	3.00	433	4.97
Computer Assisted Instruction	453	6.05	109	1.25
Group activity	147	1.96	221	2.54
Mobile/ HBT	332	4.43	131	1.51
Psychological Assessment	7477	99.85	7951	91.35
Behavior Modification	3697	49.37	5031	57.80
Parent counseling	7770	103.70	9889	113.61
Vocational Assmt,Guidance & Counseling	596	7.96	616	7.08
Vocational Guidance & Information	115	1.54	159	1.83
Workstation (VT)	1002	13.38	110	1.26
Occupational Therapy	2252	30.07	2511	28.85
Resource room(VA)/(Slow learners)	101	1.35	126	1.45
Family Cottages	203	2.71	133	1.53
*Others	1736	23.18	1284	14.75

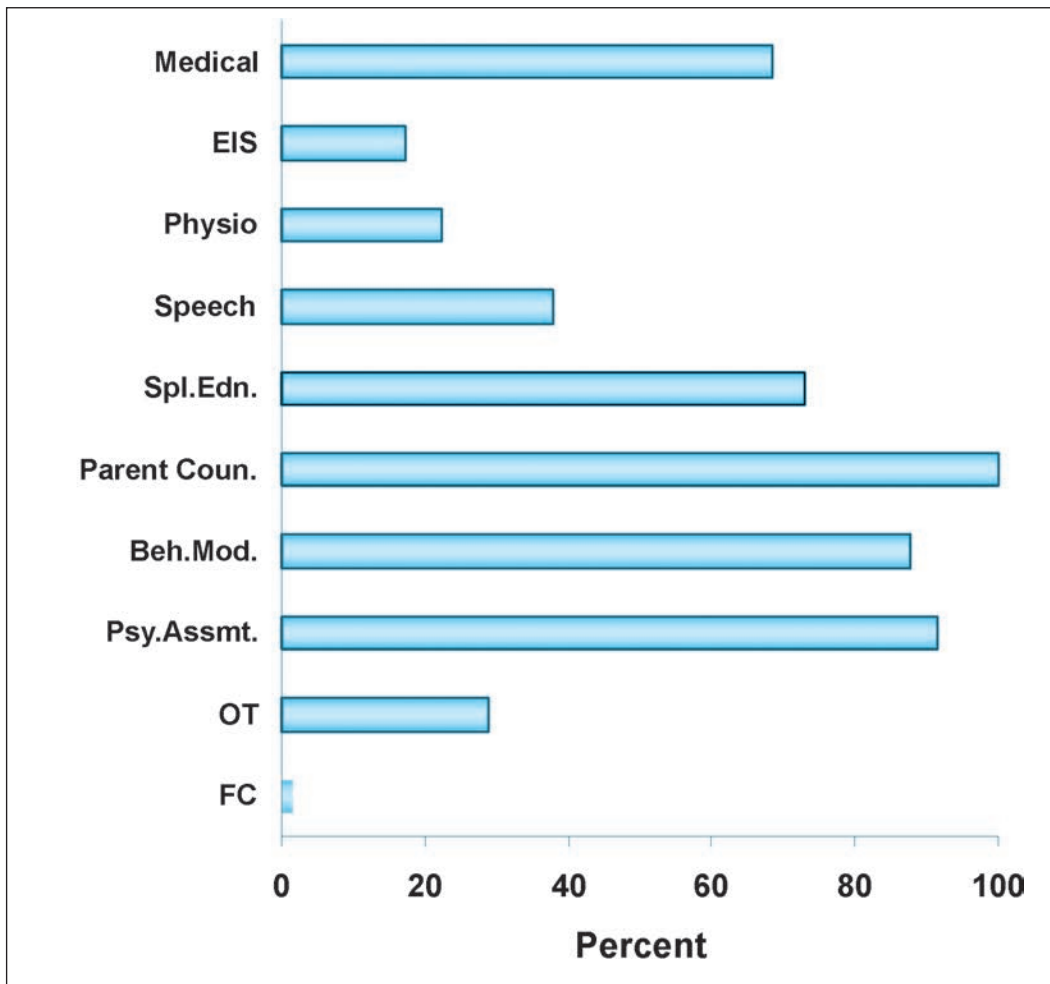
\* Respite care, NIOS, Neurology Endocrinology, Attention Deficit Hyperactive Disorder(ADHD), Dental, Low vision, Orthopedics



**Graph 2 : Distribution of New Cases**



**Graph 3 : Highlights of General Services during 2012-13 (N=8704)**



**Legend:**

EIS: Early Intervention Services; VA: Vocational Assessment  
 OT: Occupational Therapy; FC: Family Cottages



### 6.3 Special services

Special services are aimed at augmenting home-based training by developing management plans for implementation at home. For persons coming from outstation, family cottage facility is made available. Wherever necessary, appropriate referrals are provided to the clients to seek services from the local institutions, while the periodic consultation at NIMH continues. The back-up support to special services is provided through direct training, supply of folders, posters and books published by the Institute for information and guidance of parents and family members at a nominal cost. During the year, **1,32,475** special services were provided compared to 1,24,792 special services provided in the year 2011-12 (more than 6%) as shown in the **Table 9**.

Follow-up clients seen		
Year	Target	Achieved
2011-12	-	1,24,792
2012-13	1,23,330	1,32,475

**Table 9 : Follow up clients seen in special services during the year 2012-13**

Service Activity	2011-12		2012-13	
	number	%	number	%
Medical/Psychiatry	16644	13.34	15773	11.91
EIS/Pediatrics	19778	15.85	17029	12.85
Physiotherapy	6672	5.35	5536	4.18
Speech Therapy	2869	2.30	4348	3.28
Multiple disability	5369	4.30	6125	4.62
Hydrotherapy	106	0.08	62	0.05
Special Education	15386	12.33	15814	11.94
PMR	224	0.18	2	0.00
Autism/LD	2889	2.32	3138	2.37
Multi sensory	1934	1.55	3393	2.56
Computer Assisted Instruction	4439	3.56	3259	2.46
Group activity	5639	4.52	9078	6.85
Mobile/ HBT	1259	1.01	1154	0.87
Psychological Assessment	4327	3.47	5237	3.95
Behavior Modification	4287	3.44	5526	4.17
Parent counseling	7197	5.77	7944	6.00
Voc Assmt, & Guidance & Counseling	867	0.69	65	0.05
Voc. Guidance & Information	153	0.12	0	0.00
Workstation (VT)	15646	12.54	17222	13.00
Occupational Therapy	5751	4.61	6790	5.13
Resource room(VA)/(Slow learners)	663	0.53	2028	1.53
Family Cottages	502	0.40	446	0.34
*Others	2191	1.76	2506	1.89
<b>Total</b>	<b>1,24,792</b>	<b>100.0</b>	<b>1,32,475</b>	<b>100.00</b>

\* Respite care, NIOS, Neurology Endocrinology, Attention Deficit Hyperactive Disorder (ADHD), Dental, Low vision, Orthopedics



### 6.3.1 Medical Services

Clients registered at NIMH are taken up for detailed case history and clinical examination for the purpose of general health assessment and diagnosis. Medical management is individualized and need-based and include imparting information and treatment for comorbid conditions like epilepsy, hyperkinetic behaviour, nutritional deficiencies, infections, hormonal deficiencies and mental illnesses. Drugs are provided for epilepsy, hyperkinesia and mental illnesses free of cost to clients belonging to families of low income. Consultancies such as Neurology, Orthopedic, endocrinology and Pediatric services are outsourced. Appropriate referrals are also made wherever necessary.

### 6.3.2 Physiotherapy Services

This unit caters to persons with mental retardation with associated motor problems such as cerebral palsy, abnormal motor patterns, movement disorders, loco-motor abnormalities and congenital abnormalities. After detailed assessment, intervention programmes are planned to meet individualized needs. Therapeutic interventions are of eclectic nature that include exercises, hydrotherapy, correction of postures and movement disorders, gait training, motor training and enhancement for overall development are extended.

### 6.3.3 Early Intervention Services

Early Intervention Services cater to children of 0-3 years who are at risk or have developmental delays. These services focus on prevention, remediation and treatment to foster all-round development. The services offered are child-centered and family-oriented and provided by a multi-disciplinary team of experts. The child receives individualized intervention consisting of physiotherapy, occupational therapy, speech and language therapy, child development, medical, psycho-social and family interventions. Early intervention services also offer parent training programmes, group therapy, play therapy, guidance and counseling. Appropriate referrals are also made.

### 6.3.4 Biochemistry Services

At NIMH, medical services are supported by the facility of a Biochemistry Laboratory to carry out biochemical investigations (Metabolic screening) to identify biochemical or metabolic disorders related to mental retardation such as aminoacidopathies, glycogen storage disorders and mucopolysaccharidoses and routine biochemical tests to check general health that can support diagnosis, treatment, counselling and monitoring.

### 6.3.5 Speech Pathology and Audiology Services

Delayed development of speech and language is one of the major features of mental retardation. Many children also have hearing defects of various natures. Those clients requiring services are taken up for detailed assessment. A speech and language intervention package is developed to meet the individual needs. Parents are guided to carry out the intervention at home under the advice of the professionals.



### 6.3.6 Electroencephalogram

The Electroencephalogram (EEG) is a basic procedure used for understanding the physiology of the brain. It is helpful in identifying the pathological changes seen in the structure and function of different areas of the brain. The main objective of the procedure is to diagnose the types of seizures and various epileptic syndromes. EEG is an essential procedure of a comprehensive diagnostic workup of the persons with mental retardation having neurological deficits. EEG is also used to assess or monitor the effectiveness of the treatment. It helps in deciding the type and duration of the medication to be used for epilepsy. The prevalence of epilepsy among the persons with mental retardation is high (30%) in comparison with that of the normal population (1%).

### 6.3.7 Electromyography

The Electro-myelography (EMG) records the electrical changes in the nerve potentials. It gives information about the functioning of sensory and motor nerve status of persons with mental retardation. It helps to find out if the reflex mechanism is intact or interrupted and to identify the functioning of the nerves, spinal cord and brain. Based on the result of the EMG, the therapy programme is designed on which the nerve sensation, functioning of muscles and joint movement is identified.

Accordingly, therapy can be given by exciting of sensation activity of nerves. Repetition of sensory mechanism will help to regain sensation if there is a loss and reduced sensation. If there is damage at the motor nerve spinal levels, muscle contraction can be enhanced by repeating the reflex mechanism. Repeated muscle contraction helps to develop muscle power, which in turn will assist in developing joint stability.

### 6.3.8 Services for Persons with Multiple Disabilities

Children with mental retardation having additional problems such as hearing impairment, visual impairment and physical impairment are provided special attention through this service. A team of multidisciplinary professionals provide comprehensive services. Special clinic for orthopaedic services is available once a week.

### 6.3.9 Nutrition

All cases registered at NIMH are assessed for nutritional status using anthropometric measurements (height and weight). Those cases identified as 'undernourished' are provided nutritional advice.

### 6.3.10 Hydrotherapy Services

Hydrotherapy is a mode of treatment for persons with mental retardation, particularly those suffering from joint pains, swelling, stiffness, muscle weakness, and spasticity. The Institute provides hydrotherapy services to the persons with mental retardation having various physical problems.



Services in Hydrotherapy unit



### **6.3.11 Special Education Services**

Children with mental retardation are assessed for current level of functioning in various skill areas such as self-help skills, gross and fine motor skills, functional reading and writing skills, time, money and related cognitive skills. Parents are involved throughout the process of special education services such as assessment, planning of an Individualized Educational Program (IEP) and in the implementation of IEP. Various teaching, learning materials and adaptive materials appropriate to Indian context are utilized during the training. Computer-assisted training modules are also utilized for children with special needs to enhance their learning.

### **6.3.12 “MANORANJANAM” - Resource room for Persons with Profound Mental Retardation**

Though the service programmes for persons with mental retardation have increased over the years, very few organizations offer services to persons with profound mental retardation. Persons with profound mental retardation require more specialized services and personnel to train them because majority of them suffer from associated physical disability and some even suffer from epilepsy. However, research studies on education of children with profound mental retardation indicate that a systematic training can make them capable of learning basic skills. This reduces their dependency on others to some extent. In view of this, the Institute has started a unit called “Manoranjanam” to train children with profound mental retardation. This is an outcome of one of the institute’s research project.

### **6.3.13 Autism and Mental Retardation**

It is estimated that 75% of persons with autism have low levels of intelligence. As the children with mental retardation and autism are found in schools for children with mental retardation, it is essential that appropriate educational services are provided to them. Staff trained in managing children with autism is engaged to provide individualized as well as small group instruction to children with mental retardation and autism. In addition, the staff provide consultancy support to the teachers in the regular schools and special schools.

### **6.3.14 Mental Retardation and Sensory Impairments**

Children with mental retardation having sensory impairment in vision and/or hearing require special education in addition to group training. When both the senses of vision and hearing are impaired in them, the training methods and materials require adaptations. Keeping this in view, exclusive services for such children have been initiated. These children get individualized attention from the trained teachers in addition to their classroom experience. Environmental modifications are made to meet their unique needs. Considering the need of services for children with mental retardation having sensory impairments, a manual for deaf blindness was developed by NIMH in collaboration with Voice and Vision Taskforce, which can be used as a guide for teachers/ service providers.



### 6.3.15 Computer-Assisted Instruction

Computer-assisted instruction aims at enhancing the academic learning skills of children with mental retardation as well as to teach the children the techniques of computer operation so as to enable them to use developed software for self learning.



Self learning by SEC students through Computer Assisted Instruction during JS visit

The Department of Special Education has so far developed six software packages suitable for persons with mental retardation. Regular services are being offered to students of special education centre and adults with mental retardation from department of adult independent living in order to orient them to use computers for learning. Multisensory input received through computer assisted instruction help in sustaining attention and motivation of the children and as a result expedite their learning. In view of neuro-motor problem associated with mental retardation, computer software packages have been developed with adaptations and hardware peripherals to help children with mental retardation.

### 6.3.16 Group Activity

Group activity services are provided to children with mental retardation referred from general services till they get regular admission in Special Education Centre. These services are provided in the afternoon for three different age groups.

### 6.3.17 Psychological Assessment

All clients registered at NIMH are taken up for psychological assessment, which include developmental assessment, intellectual assessment, and assessment of adaptive behaviour. Batteries of tests are administered to ascertain the level of retardation. Based on the assessment, individualized intervention programmes are formulated. Psychological assessment reports are provided for educational and training purposes and to obtain the disability certificate to avail benefits and concessions given to persons with mental retardation by the Government from time to time.



### 6.3.18 Behaviour Modification Services

Persons with mental retardation having problem behaviors like head banging, self-biting, self-injurious behaviour, excessive crying etc., are offered services of behavior modification. After a detailed assessment, information on frequency, severity of behaviour problems, functional analysis is done to find out the factors leading to such behaviors. Subsequent to this, appropriate behavioural management programmes are developed and parents are given instructions on suitable interventions in the event of occurrence of the problem. Follow-up is done at regular intervals to ensure the progress.

In order to augment the behaviour modification programme, the institute has acquired a poly physiograph (generally termed as 'lie detector') through which bio-feedback (knowledge result) techniques can be successfully used for assessment of various central and auditory nervous functions (neuro-biofeedback) and offer therapy for controlling them.

### 6.3.19 Parent Counseling Services

Parent counseling is offered by providing emotional support and empathetic understanding to deal with their distress and guilt feelings arising due to presence of the child having mental retardation. Apart from tackling misconceptions of parents, guidance is also given to understand the nature of mental retardation and the needs of the children at different stages of life so as to promote harmonious development of the child in the family setting.

### 6.3.20 Vocational Training

Socio-economic rehabilitation of persons with mental retardation is promoted through services of vocational training and job placement. Adults with mental retardation are given training in generic skills, specific skills followed by on-the-job training. On-the-job training varies from one client to another depending upon the job opportunities available to the client in the locality / community where she/he lives. Follow-up support is provided to the client till she/he is able to carry on the job independently at the job site.

### 6.3.21 Workstations for Vocational Training of Persons with Mental Retardation

There are about 1,000 organizations imparting special education to persons with mental retardation in the country. These organizations provide educational services to persons with mental retardation in the age range of 5-18 years. Post-school programmes aimed at vocational training are comparatively less in number. As such, no prescribed norms are available for a systematic and regularized pattern of vocational training programmes. To streamline the process of vocational training, NIMH has initiated workstations to have a phase wise training programme for persons with mental retardation. After the assessment of the clients, a management plan is made to stimulate the cognitive, motor, communication and social functioning and then place them in different workstations. At the workstations, initially, the person with mental retardation is given exposure to varied settings to develop work skills and work behaviour (Generic skill training). After the successful completion of training for a period of six months in generic skill training, Specific Skill Training and Independent Skill Training are provided. The trainees are then placed in open/supportive/self-supportive/sheltered employment after conducting a 'job analysis' which matches the skills acquired by the client with that of the skills required/ identified for





the job. While on training, efforts are made to identify jobs and intimate the parents or to pursue for further follow-up.

Vocational training services were provided in terms of vocational assessment, guidance and counseling and workstations. A total of **177** adults with mental retardation received various services in the Department of Adult Independent Living and the distribution of these cases according to Gender is presented in **Table 10**.

**Table 10 : Vocational Training Services provided in DAIL by Gender**

Gender	Vocational Assessment, Guidance & Counseling	Vocational Training (Workstations)
No. of Male cases	89	48
No. of Female cases	22	18
<b>Total</b>	<b>111</b>	<b>66</b>

As a part of the third phase of vocational training (Independent Skill Training) trainee clients are placed at various departments of NIMH on rotation for support services, augmenting the departmental requirements. The trainee clients are also engaged in supporting the vegetable cutting requirements in the students' mess hitherto done by contract staff. This has helped to divert the man power of contract staff to other essential work whereas the trainee clients get systematic exposure in a specific work.

In order to accommodate all the clients registered in the department, the generic skill phase has been divided as generic skill I, II & III.

The by-products of the workstation training such as screen printing, photocopying, stationery products (writing pads, file pads etc.) and offset printing are used by the institute for its internal use.



Person with Mental Retardation - operating offset printing machine



The other by-products such as greeting cards, glass paintings, soft toys, craft work etc. are being purchased by visitors and staff members and also used by the Institute for its requirements such as mementos to visiting guests, wall decorations etc. A portion of the income generated through these transactions is returned to the trainee clients as reinforcements to their efforts.

### **6.3.22 Programme for Transaction Training**

The Department of Adult Independent Living has initiated an innovative training programme termed as 'transaction training'. As part of this programme, a portable counter (demo-tent) has been placed outside the campus of NIMH facing the main road and adult persons with mental retardation with the support of trained vocational instructors carry out various activities of promoting the by-products of the vocational training such as soft toys, chocolates, art and craft items, greeting cards etc. Through this activity, they are being exposed on the basic requirements for marketing, socialization, cash transactions, social skills, communication skills etc.

### **6.3.23 Occupational Therapy**

The Occupational Therapy unit caters to the needs of persons with mental retardation, associated conditions and other pervasive developmental disorders. This service mainly addresses issues such as developing performance components, improving specific sensory, motor, cognitive perceptual skills and promoting independent living. Clients requiring services are taken up for a detailed evaluation and a specific intervention programme is developed according to the individual needs. Those in need of assistive and adaptive devices are guided to appropriate centres. Necessary guidance and support is provided for the caretakers to continue the intervention at home.

### **6.3.24 Genetic Clinic**

Parents seeking expert advice regarding the probability of occurrence of genetic or birth defects in the future offspring are offered services of genetic counselling. For biochemical, chromosomal and cytogenetic investigations, the clients are referred to collaborating institutions such as Institute of Genetics and Centre for Cellular and Molecular Biology located in Hyderabad. A team of medical and genetic experts offer counselling services.

### **6.3.25 Resource Room for Open Basic Education coaching for NIOS Examination**

The National Institute of Open Schooling (NIOS) has started "Open Basic Education Programme through Distance Education Mode" and has accredited centres throughout the country. Many children with mild mental retardation and borderline intelligence do not have access to education facility as they do not fit into the special school system and face difficulty to cope with regular educational demands. These children benefit from "Open Basic Education" programme under NIOS because of the simplified, phased-out system of learning. This also bridges the gap between special school and regular school systems. With this in view, the Institute started services to train children with borderline intelligence and mild mental retardation to appear for the Open Basic Education programme under NIOS.

NIMH provided special coaching classes for primary level students with learning problems and mental retardation. During 2012-13, a total of 31 children benefited through this programme.



## 6.4 Family Cottage Services

The facility of family cottage is available for the families coming from far-off places to avail themselves of services at NIMH. There are 12 units of family cottages available at NIMH, Secunderabad. Each unit can accommodate a family of at least 6 members. Every unit has an attached kitchenette and a washroom. While the occupants of family cottage can opt the NIMH canteen facilities being run by parents of a person with mental retardation, facilities such as utensil and cooking gas are also provided in each unit of the family cottage for self cooking if required by the occupant. The clients occupying the family cottage can stay for a period of two weeks and receive professional services and training such as skill training, individual family counseling, and management of problem behaviors, speech-language therapy, medical advice, physiotherapy, recreational activities and other help. During their stay at these cottages, parents have the opportunity to concentrate on the needs of the child while being away from their daily routine chores.



Family Cottage inner view

The number of occupants of the family cottage during the year 2012-13 was 421. The average duration of the stay was 5 days per family. The details of services provided in family cottages are provided in **Tables 11**.

**Table 11 : Occupancy of family cottage by age and gender of the clients**

Age in years	Total Clients	%	Male	%	Female	%
0-3	62	14.7	33	11.1	29	23.6
4-6	88	20.9	61	20.5	27	22.0
7-9	97	23.0	73	24.5	24	19.5
10-14	113	26.8	90	30.2	23	18.7
15-18	36	8.6	28	9.4	8	6.5
>18	25	5.9	13	4.4	12	9.8
<b>Total</b>	<b>421</b>	<b>100.0</b>	<b>298</b>	<b>100.0</b>	<b>123</b>	<b>100.0</b>



## 6.5 Special Education Centre

Special Education Centre (SEC) serves as a laboratory for the training programmes of human resource development of the Institute.

The centre has an enrollment of **119** children in the age range of 3 years to 18 years including children with varying degrees of mental retardation ranging from mild to profound levels. There are ten classroom facilities ranging from early childhood special education to pre-vocational training. In addition to this, four exclusive service units for education of children with additional disabilities such as autism and multi-sensory impairment, profound mental retardation and open basic education programmes have been established to see that children with all levels and combinations of mental retardation are admitted to the school and the students undergoing various long-term academic programmes will have an opportunity to deal with various problems of mental retardation.

In addition to regular classes, group activity services are provided for the new clients referred by the general services. Such clients cannot get admission for regular services in SEC. These students will attend the services on appointment given by the classroom teacher as per the child's need and parent's convenience. The service activities provided in SEC are given in Table 12.



Classroom teaching in SEC

**Table 12: Service activities at Special Education Centre, NIMH, Secunderabad**

S. No	Services	New		Total	Follow-up		Total	Grand Total
		M	F		M	F		
1	Group activity	23	23	46	3615	1720	5335	5381
2	Mobile Service	22	56	78	471	482	953	1031
3	Autism Unit	6	--	6	298	28	326	332
4	Multi Sensory Unit	3	1	4	282	110	392	396
6	Computer Assisted Instruction	--	--	--	--	--	1742	1742



## Other Activities of SEC

- Thirty students from SEC participated in interschool sports and cultural events organized by Andhra Mahila Sabha Durgabai Deshmukh Vocational Training & Rehabilitation Centre for the Handicapped, Vidyanagar, Hyderabad on 23rd January, 2013 and won 14 prizes.
- Nine SEC students participated in Art Activities and Cultural Programme at Fifth International Innerscape at Lucknow during 21-23, December 2012.
- SEC students participated in Sports conducted by JCI, at L.B Stadium, Hyderabad on 8<sup>th</sup> October, 2012 Special Olympic Bharath and won prizes in Tennis and Bocce Game.



Prizes won by SEC students in the Inter-school sports competition



Plantation during Independence Day

- Fifty students participated in a Carnival, conducted by Special Olympic Bharat, AP, at Agrasen Bhawan, Paradise, Secunderabad.
- On the occasion of the NIMH Annual day, Inclusive sports were conducted on 22<sup>nd</sup> February, 2013, by teaming regular school students with those of SEC.
- Students of SEC participated in the annual sports and received prizes.
- SEC students performed March-past, drill, fancy dress and cultural programmes during the Independence Day and Republic day celebrations.
- SEC celebrates various religious festivals to inculcate diversified cultural and religious values among the students every year.

## 6.6 Parent Training Programmes

The objective of this program is to involve parents in care, management and training of their children with mental retardation. The program also encourages mutual support among parents and exchange of ideas and information. During this year, 44 parent training programmes were conducted benefiting **1150** parents. This also includes parents trained during the master trainers' programme conducted by the Institute.



## 6.7 Respite Care Services

Respite care is a short-term care that helps families having children with mental retardation to take a break from the daily routine and stress. Respite Care also provides an opportunity for persons with mental retardation to stay away from the family for a short period which may enhance the skills of independent living. NIMH started the respite care services from October 2010 with the following objectives:

- To provide an opportunity to parents/family members to get respite time in order to fulfill other responsibilities.
- To create an opportunity for parents to get relief from the stress of routine care of persons with mental retardation.
- To provide a short stay from home for persons with mental retardation.
- To serve as a demonstration centre for practical exposure for the students undergoing various academic training programmes at NIMH.

Separate facilities are provided for male and female individuals with mental retardation with zero rejection as the norm to be admitted in the respite care centre. Each facility is supported by a trained special educator during day-time and services of ayahs are provided round-the-clock. Certain added facilities for leisure, food and medicines are taken care of. The parents/family members of persons with mental retardation are utilizing these services for their children for a short stay lasting up to 5 days, which is extended in exceptional cases. Some 223 beneficiaries have utilized the services of Respite Care Centre during the year. The details are given in **Table 13**.

**Table 13: Registration of New Clients at Respite Care Services (N=223)**

Month	Beneficiaries	Month	Beneficiaries
April	17	October	15
May	17	November	18
June	16	December	13
July	18	January	26
August	21	February	22
September	18	March	22

## 6.8 Feedback from the Clients on NIMH General Services

As part of the efforts to refine the quality of the services offered, NIMH obtains feedback from its clients. An analysis of the feedback received from clients/Parents during the year revealed that 64% of the clients are satisfied with the services offered at NIMH and the details are given in **Table 14**. The satisfactory level of services provided by the professionals (Sl.No 1-19) is 74%, whereas the satisfactory level of services provided to the clients by students attending various long-term training programmes under the supervision of faculty and guest faculty is found to be 49% (Sl. No.20-a-f). Apart from the feedback format given below, suggestion boxes and complaint registers are also maintained at the service providing areas. Suitable actions are taken to provide required comforts to the clients in relation to NIMH services.

**Table 14 : Feedback of the Client/Parents on General Services at NIMH (N=714)**

Sl. No.	Item	Satisfaction (%)
1	Explaining the details of the conditions of the individual by the professionals	84.77
2	Dates given for appointments	87.42
3	Explaining the rationale for the management plan	82.78
4	Guidance & training in working on management plan at home (HBT)	86.75
5	Improvement in the individual after the intervention	82.12
6	Attitude of the professional staff and assisting staff towards their work	71.52
7	Giving information on services available at NIMH	82.12
8	The extent of cooperation extended by them in helping the client and care givers	73.51
9	Time spent by the service providers/ Professional staff with the client	76.16
10	Time spent in waiting to see the professional / service providers	91.39
11	Competence / expertise of the service providers / professional staff	79.47
12	Reasons given for doing assessments and explanations given about the results	68.21
13	Provision of counselling services	69.54
14	Information being given about concessions and benefits	63.58
15	Availability of amenities such as water rest rooms, wheel chairs, Canteen services etc	61.59
16	Availability of reading material and literature about various disabilities	47.68
17	Punctuality / Availability of service providers in keeping appointments	71.52
18	Referrals made by the professional staff when required	63.58
19	Contribution of staff towards creating friendly environment in the Services	69.54
20	<b>About Services provided:</b>	
a	Medical	70.86
b	Behaviour modification	48.34
c	Parental Counselling	49.67
d	Special education	41.06
e	Physiotherapy	39.74
f	Speech & language Therapy	42.38
	<b>Overall</b>	<b>64.00</b>

# NIMH MODEL SPECIAL EDUCATION CENTRE, NEW DELHI

NIMH Model Special Education Centre (NIMH-MSEC) established in 1964 by the Ministry of Social Justice and Empowerment was brought under the administrative control of NIMH, Secunderabad in 1986. The school functions with the objective of helping persons with mental retardation to develop their potentials to the fullest extent. The number of children on roll was 77, of which 15 were residential and 62 were non-residential learners. (Table 15).

**Table 15 : Enrolment by Gender**

Gender	Non-residential	Residential	Total
Boys	43 (81%)	10 (19%)	53
Girls	19 (79%)	5 (21%)	24
<b>Total</b>	<b>62 (81%)</b>	<b>15 (19%)</b>	<b>77</b>

## 7.1 School Activities

### Community awareness and social skills

Children were taken to various community setup to give them an exposure. All major festivals were celebrated in the school to instill respect for one's history and culture. Celebration of National Festivals also formed an integral part of the school's curriculum.

- NIMH MSEC celebrated National Festivals such as the Independence Day and the Republic day.
- Religious festivals such as Raksha Bandhan, Diwali, Christmas were celebrated by the students and staff of NIMH MSEC.

## 7.2 Educational tours & picnics

- Children visited the Zoological Park in Delhi on 02.02.2013. The outing was conducted in collaboration with the National Museum of Natural History on the occasion of their Annual Event for Children with special needs. An on-the-spot painting event was also organized in which all the children participated.
- Students of Secondary, Pre-vocational and Vocational groups were taken out for an Educational Tour to the Delhi Metro. In this the children were oriented to safety rules and other nuances of traveling in the metro.
- A group of children of the center witnessed a cultural program and a Puppet Show on 27<sup>th</sup> September 2012 organized by Impressario India, an NGO dedicated to showcasing India's rich cultural heritage.





- All the students of the residential wing, and a few day students along with their guardians attended a DJ session titled Dance Magic organized by the Society for Child Development at the Dilli Haat on 7<sup>th</sup> November, 2012.

### 7.3 Other events

#### Sports:

- **Interclass Sports Events** were organized for the children of the Pre-primary and primary groups in July and for those of the Secondary and Pre vocational groups in August.

#### Inter school Competitions:

- In October students of the center participated in the Inter School Sports Meet organized by Child Guidance center of the Jamia Milia Islamia. Students won prizes.
- Students of NIMH-MSEC participated in the **Delhi State level Athletic & Bocce games** organized by the Special Olympics Bharat (Delhi) during 19-21 Dec 2012 at the Tyajagaraj Stadium, New Delhi and won prizes.

#### Art, Craft, Dance, Drama, and Music:

- Thirteen paintings by the students were sent to **Samadhan, an NGO**, for a **National Exhibition of Paintings** by the intellectually disabled persons. Out of these entries 7 were selected and put up for display at the Exhibition during 7-8 April 2012. at India International Center, Annexe, New Delhi.
- Thirteen paintings by children of NIMH-MSEC were sent in April 2012 for **Very Special Arts of India's** 18<sup>th</sup> Annual Art competition (MR Category). One student of the centre Miss Rina won the consolation prize of Rs. 1000 for her entry. All the participants were given participatory certificates.
- In August, two students participated and won merit prizes in the Annual Sangeet Baithak organized by the Very Special Arts of India.
- A team of ten students of NIMH-MSEC participated in an inter-school Multi Disability Integrated Festival titled **Ability Utsav** organized by the YMCA, Nizamuddin during 11-12 Oct 2012 and won prizes.
- Students of the Center took part in the **19<sup>th</sup> MTNL Perfect Health Mela** on 9<sup>th</sup> Nov 2012 at the Constitution Club, Rafi Marg. Apart from generating awareness on healthy living habits, a cultural competition was also held. Students put up an impressive performance and won prizes in different activities.
- Thirteen students of the Center took part in a Drawing & Painting Event organized by the Rehabilitation Department of the **Safdarjung Hospital** on 3<sup>rd</sup> Dec 2012 to mark the occasion of the International Day for the Disabled.
- All children of NIMH-MSEC participated in the **Art & Craft Workshop** organized by the **National Museum of Natural History** on 6<sup>th</sup> Feb 2013.



- In March 2013 paintings by the students of MSEC were sent to the Annual Painting Competition organized by the Very Special Arts of India.

#### **Activities of Pre-vocational and Vocational units:**

The following activities in vocational wing continued this year

1. Wood work section
2. Diya and candle making project:
3. Stationery making
4. Screen printing unit
5. Mat Weaving Unit
6. Phenyl making Activity
7. Flower cutting & Drying Project: In this project, waste flowers from local temples, Banquet halls & homes were collected directly by the students, cut, dried and sent back to the coordinating agency where they are processed into herbal colors for use at HOLI. The cut & dried flowers were then exchanged for readymade herbal holi colors by the coordinating agency

Residential facility: Residential students are given training in activities of daily living areas such as self-help skill, social skill and domestic skill. Therapeutic services are provided to the needy residents at Ankur (RC).

The students are regularly assisted by the House mother in home work given at School. Efforts are made to link their daily activities in the hostel with academic skills such as counting, sorting, classification etc. Peer tutoring is also used.

- NIMH Annual Day was celebrated by NIMH MSEC by organizing various activities including cultural programmes from 16<sup>th</sup> to 23<sup>rd</sup> February 2013.
- To mark the International Day for the Disabled, an Exhibition-cum-Information counter was put up at the Central Market, Lajpat Nagar on 01.12.2012 and a rally was organized by involving students of NIMH-MSEC, staff and students of NIMH-RC.
- World Autism Awareness Day was commemorated on 2<sup>nd</sup> April 2012. The school building was illuminated with blue lights on that day.
- NIMH-MSEC participated in Shilpotsav, along with RC-NIMH, on behalf of NIMH, from 1<sup>st</sup> to 11<sup>th</sup> Nov 2012 at Dilli Haat, New Delhi. Shilpotsav is an annual exhibition organized by the Ministry of Social Justice and Empowerment.

---

# CONSULTANCY AND TECHNICAL SUPPORT

## **8.1 Technical Appraisal of NGO Applications for Grant-in-aid from Government of India, MSJ&E**

Under this scheme, to promote voluntary action for the persons with disabilities, Ministry of Social Justice & Empowerment gives grants-in-aid to the non-governmental organizations in the country. At the request of the Ministry of Social Justice & Empowerment, the Institute undertook technical evaluation of three programmes implemented by NGOs. NIMH conducted technical evaluation of NGOs and submitted the reports.

## **8.2 Rehabilitation Council of India (RCI)**

During the year, the staff of the Institute participated in the meetings of Rehabilitation Council of India in developing and evaluating curricula for various courses. Faculty level staff members also conduct inspections on behalf of RCI, of various teacher training institutes in the country. NIMH conducted four such inspections during the year.

## **8.3 Special Employment Cell**

During 2012-13, three persons with disabilities were registered with the Special Employment Cell set up at NIMH. With this, the number of persons with disabilities under special employment cell for sponsoring their names as per the eligibility criteria against the requisitions received from various organizations is 95, since 1995.

# DOCUMENTATION AND DISSEMINATION

Documentation and Dissemination is one of the important objectives of NIMH. The Institute has a well-equipped library with adequate collection of books and journals in the area of mental retardation and allied fields. The Institute supplies photocopies of journal articles, distributes NIMH publications, video cassettes and floppies, provides routine library services, prepares reading lists and newspaper clippings and information services through the internet.

NIMH has a bimonthly publication “Mentard Bulletin” which contains abstracts on the articles on disability is utilized by around 300 institutes in the country. Full text of the copies of the articles is also supplied on request.

The NIMH Library has more than 14,000 books (purchased, gratis, and gifted) as on 31-03-2013.



Library reference by students

## 9.1 Posters and Flip charts

The Institute continues to undertake public awareness programmes such as printing of posters, publishing information materials and flip charts for the grassroot level workers to identify disabilities.

## 9.2 Website Digitalization

The complete website has been modified to a new look with flash images and it has been made disabled-friendly. The Institute has developed the website in Hindi as well. The Security audit for the website has been carried out and the process of seeking Standardization, Testing and Quality Certification (STQC) is in progress. The Institute has completed anomalies which are generated by STQC. NIMH is waiting for STQC Certification. The website of the Institute (website [www.nimhindia.gov.in](http://www.nimhindia.gov.in)) is hosted at NIC Hyderabad. One more website, [www.nimhindia.org](http://www.nimhindia.org), is also accessible.

# EXTENSION AND OUTREACH PROGRAMMES

## 10.1 Assistance to Disabled Persons for purchase/ fitting of Aids/ Appliances (ADIP) Scheme

The primary objective of this programme is to organize composite rehabilitation camps for distribution of Aids and Appliances to persons with disabilities in the country.

The procedure involves conducting the assessment first, followed by distribution of the aids and appliances to the persons with disabilities identified during the assessment camp.

The support of the Office of the District Magistrate/Collector is always ensured in conducting the camps. For conducting the camp, appropriate technical staff is outsourced from District Hospital, NGOs and other organizations by paying suitable honorarium. The procedure involves the following steps:

### Publicity

Before conducting the camps wide publicity is given through printed handouts and are distributed in the regional language.

### Professionals involved:

Generally, the professionals involved for conducting the camp are Psychologist, Special Educators (MR/HH/VH), Audiologist, Ophthalmologist, Orthopaedic Surgeon, Physiotherapist, P&O Engineer / Technician and Psychiatrist.

### Data maintenance

Following data are maintained with respect to ADIP activities:

- Case registration form of each client covered in the camp
- Assessment forms
- Preparing the details of aids and appliances, category-wise
- Details of the distribution of aids and appliances
- Computerised documentation of the 19 column register

### Financial Support

Financial support is extended by NIMH, Secunderabad for creation on awareness of the ADIP camp, conduct of identification and assessment camp, procurement of aids and appliances and their distribution. During assessment and distribution camps, the beneficiaries and escorts are provided food and water.



## Networking

Networking with local NGOs and establishing linkages with medical colleges/district hospitals / rural hospitals /PHCs/ DDRCs / any other professionally competent agency for fitment/post-fitment care of the beneficiaries as well as aids/appliances is ensured.

## Follow up:

Follow up services are organized in coordination with the existing NGOs to help the beneficiaries assisted under the scheme with regard to the use of aids and appliances supplied to them and other related services required for the Rehabilitation of Persons with Disabilities.

### 10.1.1 Distribution of Aids and Appliances - ADIP Scheme

A total of **1060** Aids and Appliances (982 through camps and 78 through centre based) were distributed to the persons with disabilities during the year 2012-13 under the ADIP scheme. The details of the distribution of aids and appliances are given in **Table 16 & 17**.

Year	ADIP-Beneficiaries	ADIP- Expenditure
2010-11	403	Rs. 3,17,685
2011-12	430	Rs. 26,87,000
2012-13	1060	Rs. 67,69,242

Out of Rs.67.69 lakhs spent on ADIP, Rs.64.23 lakhs was spent on ADIP materials and Rs.3.46 lakhs for camp expenditure. The above expenditure is not exactly related to the number of beneficiaries of the particular year as there were payments related to previous year's procurement of aids/appliances.



Received TLM under Centre Based ADIP Scheme



**Table 16 : State wise details of camps and number of aids and appliances distributed during 2012-13**

State	District	No. of Camps *Date & Place*	No. of Beneficiaries	Appliances Distributed									
				Tri-cycle	Wheel Chair	Crutches/rotators/braces etc.	Hearing Aid / SB Charger	Callipers	Braille writing equipments etc. Canes	Walker /Walking Stick	MR related assistive devices	Artificial limbs	Any Other
Karnataka	1. Chamrajnagar	3	250	136	71	1 crutches	40	-	-	2 sticks	-	-	
	2. Shimoga	1	54								54	-	
	3. Bangaluru Rural	1	28								28		
	4. Dakshin Kannada (Mangalore)	1	155								155		
	5. Tumkur	2	103	33	12	8 crutches	31 HA			3 cane	16 sticks		
	6. Mandya	2	149	34	36	30 crutches	24 HA			7 canes	18 sticks		
	7. Haveri	1	35	25	3	6 crutches					1 stick		
	8. Chitradurga	1	37	37									
	9. Koppal	1	20	19	1								
	10. Gulbarga	1	37	16	11	2 crutches	8 HA						
	11. Kottayam	3	55									55	
	Pondicherry	12. Karaikal	1	59	9	8	3 crutches	34 HA			5 sticks		
	<b>Total</b>	<b>18</b>	<b>982</b>	<b>309</b>	<b>142</b>	<b>50</b>	<b>137</b>	<b>-</b>	<b>10</b>	<b>42</b>	<b>292</b>		
<b>Place</b>	<b>Date</b>	<b>Place</b>	<b>Date</b>	<b>Place</b>	<b>Date</b>	<b>Place</b>	<b>Date</b>	<b>Place</b>	<b>Date</b>	<b>Place</b>	<b>Date</b>	<b>Place</b>	<b>Date</b>
1. Chamrajnagar	21.06.2012	3. Bangaluru Rural (Davanhalli)	23.08.2012	9. Koppal	09.11.2012	10. Gulbarga	01.04.2012 to 30.08.2013	11. Kottayam (Ettumanoor) (Uzavoor)	01.10.2012 to 02.10.2012	12. Karaikal	03.10.2012 to 10.10.2012		
	22.06.2012	4. Dakshin Kannada (Mangalore)	03.09.2012										
	24.08.2012	5. Tumkur (Tiptur)	04.10.2012 & 05.10.2012										
	18.02.2013	6. Mandya	11.02.2013 & 12.02.2013										
	19.02.2013		25.08.2012										
	20.02.2013		15.02.2013 & 16.02.2013										
	31.07.2012	7. Haveri (savannur)	13.02.2013 & 14.02.2013										
2. Shimoga (Souraba)		8. Chitradurga	31.10.2012 & 01.11.2012										

**Table 17 : Distribution of Centre Based beneficiaries during the year 2012-13**

Centre	No. of Beneficiaries	Appliances Distributed									
		Tri-cycle	Wheel Chair	Crutches/rotators/braces etc.	Hearing Aid / SB Charger	Calipers	Braille writing equipments etc. Canes	Walker /Walking Stick	MR related assistive devices	Artificial limbs	Any Other
1. NIMH HQ	33	-	15	1 rollator	-	-	-	1 walker	16	-	
2. NIMH HQ SEC	36								36		
3. NIMH MSEC New Delhi	9								9		
<b>Total</b>	<b>78</b>	<b>-</b>	<b>15</b>	<b>1</b>	<b>-</b>	<b>-</b>	<b>-</b>	<b>1</b>	<b>61</b>		

### 10.1.2 Inspection of organizations implementing ADIP Scheme

As per the Office Order No.4-2(39)/09-DD-I dated 29-09-2009, from the Ministry of Social Justice & Empowerment, NIMH conducted inspection of NGOs implementing ADIP Scheme in the States of Andhra Pradesh and Karnataka. Accordingly, during the year 2012-13, NIMH conducted 47 inspections in these states. The details on ADIP Scheme Inspections are given in **Appendix 3 (Page 78)**.

### 10.2 Programmes in the North-East Region

NIMH has initiated programmes for creating awareness about mental retardation and facilitating support to strengthen quality services through NGOs in the North-East Region since 2002. During the current year of 2012-13, NIMH in collaboration with State Departments from North Eastern States has taken up activities to render quality services to empower persons with mental retardation in these States.

A total of 7107 Clients/Parents/Professionals/Grass-root workers benefited through 65 training programmes during the year, as compared to the 5500 beneficiaries through 39 programmes for the year 2011-12. The details of the activities conducted in NE region are given in **Table 18 and Appendix 4 (Page 83)**.



Orientation to grass root level workers in North Eastern Region



Awareness Programme at Sikkim



**Table 18 : Activities in the North-East region**

SI. No.	State/ Centre	No. of Programmes	No. Beneficiaries
1	Arunachal Pradesh	12	1292
2	Mizoram	6	445
3	Manipur	9	1454
4	Sikkim	21	2293
5	Tripura	17	1623
	<b>Total</b>	<b>65</b>	<b>7107</b>

### 10.3 Community Based Programmes (CBP)

During the year 2012-13, a total of 3143 people were benefited through 46 programmes compared to 1422 beneficiaries through 20 programmes during the year 2011-12 showing a 121% increase in the total number of beneficiaries. The Programmes/Activities conducted by NIMH during the year 2012-13 under CBP are presented in **Table 19**.

**Table 19 : Community-Based Programmes during 2012-13**

SI. No.	Details of the program	Place	Date	No. of beneficiaries
1	Autism Awareness Walk on Occasion of World Autism Day	Necklace Road	2 <sup>nd</sup> April 2012	600
2	Orientation Program on Autism	NIMH Auditorium	2 <sup>nd</sup> April 2012	80
3	Awareness Program on Disability for Industrial Workers	Pragathi Enterprise Office, Jeditmetla Hyderabad	30 <sup>th</sup> May 2012	37
4	Awareness Program on Disability	Anajyaiah Nagar, Secunderabad	31 <sup>st</sup> May 2012	13
5	Awareness Program on Disability	Jyothi Convent, Secunderabad	15 <sup>th</sup> -16 <sup>th</sup> June 2012	22
6	Identification and Screening of Children with Disability	Mothers School Bowenpally, Secunderabad	15 <sup>th</sup> June 2012	4
7	Awareness Program on Disability	Kokapet	22 <sup>nd</sup> June 2012	150
8	Awareness Program on Disability	Shamshabad	23 <sup>rd</sup> June 2012	150
9	Door to Door Survey	Slums near Paradise Circle	12 <sup>th</sup> July 2012	28
10	Survey of Persons with Disabilities	Ashok Nagar, Notified Slums of Kapra area, Hyderabad	10 <sup>th</sup> September 2012	21



11	Awareness Program on Disability	Ashok Nagar, Notified Slums of Kapra area, Hyderabad	10 <sup>th</sup> September 2012	16
12	Survey of Persons with Disabilities	Nandan Muri Tarak Nagar, Secunderabad	6 <sup>th</sup> December 2012	10
13	Awareness Program on Disability	Sai Grammer School Secunderabad	7 <sup>th</sup> December 2012	13
14	Survey for Identification of Persons with disabilities	Anajaih Nagar Secunderabad	25 <sup>th</sup> February 2013	50
15	Survey for Identification of Persons with disabilities	Malkajgiri, Secunderabad	26 <sup>th</sup> February 2013	20
16	Awareness Program on Disability Schemes and Benefits	DCR&PM	8 <sup>th</sup> March 2013	08
17	Awareness and Orientation Program on Mental Retardation	Bharat Nirman Camp, Zaheerabad, Andhra Pradesh	13-15 <sup>th</sup> March 2013	320
18-36	NIMH RC, Navi Mumbai	19 programmes		233
37-38	NIMH RC, Kolkata	2 programmes		420
39-46	NIMH RC, New Delhi	8 programmes		948
<b>Total</b>				<b>3143</b>

## 10.4 Orientation Programmes

NIMH and its Regional Centres provide orientation to the visiting professionals every year. A total of **2752** visitors from 106 institutions benefited through this programme during 2012-13 as against 2369 visitors from 102 institutions during the year 2011-12 showing a 12% increase in the number of visitors.

## 10.5 Exhibitions

As a part of Awareness Programmes on Disability, NIMH conducted **2** exhibitions by putting up stalls and conducting rallies benefiting **4,000** persons during the year and the details are presented in **Table 20**.

**Table 20 : Participation in Exhibitions during the year**

Title	Target group	Conducted by	Place	Date	Beneficiaries
1. General Public	Bharath Nirman Public Information campaign	Press Information Bureau.	Govt. Degree College, Zaheerabad. AP	13.03.2013 to 15.03.2013	1500
2. General Public	Bharath Nirman Public Information campaign	Press Information Bureau.	Manthini, Karimnagar District	26.09.2013 to 28.09.2013	2500

# OTHER ACTIVITIES AND PROGRAMMES

## 11.1 National/Regional/State Level Programmes

### 11.1.1 National Parents Meet

NIMH facilitated the parents of children with mental retardation to come to a common platform to discuss issues relating to the problems of their children as well as their own concerns. This eventually led to the formation of registered Parents' Association. In order to provide a transparent and appropriate forum, NIMH organized the first Parents' National Level Conference in the year 1990. The main aim of this conference was to provide a better linkage among the parents association to empower the parents and their children with mental retardation and to discuss different issues related to persons with mental retardation. So far NIMH has organized 20 National Parents' Meets in collaboration with PARIVAAR, the National Federation of Parents' Association at various parts of the country. This National Parents' Meet is unique in its conduct since parents themselves and professionals present scientific papers which are discussed in detail. Road map for further development is generally drawn during the meet.



20th National Parent Meet, 2012- Participants

The 20<sup>th</sup> National Parents Meet was held on 1-2 December 2012 in collaboration with The Parents' Association of Mentally Handicapped, Sahyadri, Thane and organized by Parivaar – National confederation of Parents' Organizations. The programme was inaugurated by Shri Ganesh Naik, Minister of Labour, Excise and Environment, State of Maharashtra. Shri Sandip Naik, Member of Parliament promised to raise in the Parliament the question related to reservation quota available for persons with mental retardation.

A total of 350 participants representing various parents associations from all over the country compared to 300 parents participation during the year 2011-12. The programme was conducted as per the schedule. While discussing the local issues emphasis was given on conducting more training programmes on self advocacy for the persons with mental retardation.



### 11.1.2 Regional Parents Meet 2012-13

In addition to the National Parents' Meet, NIMH also organizes Regional Parents' meet with the objective to provide focused attention to the concerns of parents at regional levels. These regional parents' meets are also organized in liaison with the National Federation of Parents Associations and in collaboration with one of the registered parents association from the selected region. It is also expected that these regional parents' meets facilitate the expansion of the network of parents association to form more self help groups and to address the regional issues related to persons with mental retardation.

In the year 2012-13, Ten Regional Parents Meets were held at the following regions with the main theme of **“Support for Transition from School to Employment”** benefiting 1129 participants.

**Table 21 : List of Regional Parents Meet**

SI.No.	Regional Parents Meet	Dates
1	First Regional Parents Meet, Jammu	21-22 April, 2012
2	Second Regional Parents Meet, at Kanpur	25-26 August, 2012
3	Third Regional Parents Meet, at Surat, Gujarat	8-9 September, 2012
4	Fourth Regional Parents Meet, at Kohima, Nagaland	21-22 September, 2012
5	Fifth Regional Parents Meet, at Ujjain	27-28 October 2012
6	Sixth Regional Parents Meet, at Amritsar	3-4 November 2012
7	Seventh Regional Parents Meet at Puri, Odissa	19-20 January 2013
8	Eighth Regional Parents Meet, at Muzaffarpur, Bihar	16-17 February, 2013
9	Ninth Regional Parents Meet, at Chandigarh	2 - 3 March, 2013
10	Tenth Regional Parents Meet, at Jaipur	23 – 24 March, 2013

### 11.1.3 National Conference on “Early Intervention of Developmental Disabilities

Prevention, Early Identification and Early Intervention of Disabilities has been given utmost importance in all the major National and International mandates for Persons with Disabilities. Taking this into cognizance, National Institute for the Mentally Handicapped (NIMH) organized a two-day National Conference on “Early Intervention of Developmental Disabilities” on 7 and 8 March 2013 at NIMH Secunderabad.



Inaugural function of National Conference on “Early Intervention of Developmental Disabilities”



The major theme of the Conference has been “Early Identification and Early Intervention of Children with developmental disabilities/developmental delay/ at-risk babies” with sub themes as Neuromotor disorder, Autism, Visual Impairment, Hearing Impairment and Cognitive Impairment.

The conference was inaugurated by Prof. D Ranganath, Medical Superintendent, Niloufer Hospital for Child Health, Hyderabad. Other dignitaries present during the inaugural session were T.C. Sivakumar Director, NIMH and Dr Amar Jyoti Persha, Former HOD, Department of Medical Sciences, NIMH.



National Conference on “Early Intervention of Developmental Disabilities” ... in progress

A total of 242 delegates from different parts of the country attended the conference. Ten (10) eminent subject-experts from different disciplines were invited to share their experiences during the plenary sessions.

Around 20 scientific papers and five (5) posters were presented during the conference. The papers presented by the invited speakers, authors of scientific oral papers and posters have been compiled, published as a Souvenir and it was released during the conference.

### **Workshop on ICF Application for Persons with Mental Retardation on 27 April 2012**

A one day workshop on ICF Application for persons with mental retardation was organized on 27 April 2012 by inviting Prof. K. Sekar, HOD, Department of Psychiatric Social Work, NIMHANS Bengaluru. Around 80 participants including students and staff of NIMH attended the programme.

### **Workshop on Incheon Strategy for Southern Regional States**

National Institute for the Mentally Handicapped organized a follow-up workshop on Incheon Strategies on 21 February 2013. Twenty-five participants from the four southern States namely Andhra Pradesh, Kerala, Tamil Nadu and Karnataka attended the workshop. NIMH Faculties, students and other stakeholders also attended the workshop. The Workshop was inaugurated by Ms.Minni Mathew, Chief Secretary, Govt of AP.



#### 11.1.4 National Special Employees' Meet

National Institute for the Mentally Handicapped has been organizing Special Employees' National Meet since 1995. Special Employees' Meet is a unique programme in which persons with mental retardation who are on remunerative jobs are offered an opportunity to congregate at one platform to showcase the vocational skills, communication abilities, socialization, marketing skills etc. This national level meet has been drawing attention of the target population as there is overwhelming responses during the last 18 years.



Skill demonstration by PWD during Special Employees' Meet

The XVIII Special Employees' National Meet was organised by National Institute for the Mentally Handicapped on 2nd & 3rd November, 2012 with the following objectives:

To create awareness on the capabilities of persons with mental retardation with an emphasis on their learning and working capacity

- To promote employment opportunities for persons with mental retardation
- To develop the skills for self-advocacy among persons with mental retardation
- To improve skills of the special employees by conducting group activities, self-advocacy and cultural programmes at the International level.

On 2<sup>nd</sup> November 2012, the event was inaugurated by Smt Jayshree Ravindran, Founder & Chairman, Ability Foundation as Chief Guest. Mr Krishnaswamy, Advisor, Ability Foundation was invited as the Guest of honour.

As part of the programme, an Ability Mela was organised where all the special employees showcased their vocational skills. A skills competition was also organized. During the second day of the programme, a self-advocacy session was organised where the special employees were given an opportunity to voice their views and opinions.

Mrs Suchitra Wanchu, President, BHEL Women Welfare Association has been invited as Chief Guest for the valedictory function on 3 November 2012.



## 11.2 Celebrations of International Day of Persons with Disabilities

NIMH Celebrated the International Day of Persons with Disabilities on 03-12-2012 by declaring an “Open Day” for the general public. Visitors were given awareness information on causative factors, prevention, early identification and prospects on disability in general and mental retardation in particular. Followed by this, the visitors had direct observation of the various service activities of NIMH.

On this occasion a rally was organized and 250 people (staff & students of NIMH, students from NIMH special school and DAIL and their parents, teachers and other students from Pallavi School, Secunderabad) participated in this event. Shri Krishnudu, Telugu film actor was invited as the Chief Guest and he participated in the rally. Teaching-learning material was also distributed to children attending special education centre. The programme concluded with a cultural programme performed by students and trainees of NIMH special school and DAIL.



Felicitation to children with MR on International Day for disabled, 3rd Dec, 2012

## 11.3 Annual Day Celebrations of NIMH

NIMH and its regional centres celebrated its 29<sup>th</sup> Annual Day.

Annual Day celebration was held on 12 March 2013. Three students of the academic year 2011-12 were felicitated with Citations and Merit Certificates for their outstanding achievement in their respective long-term programmes (Table 22) On this occasion. Shri R. Srihari, famous Telugu Actor was invited as the Chief Guest for the cultural programme.

During this occasion the children with mental retardation from the special education centre at NIMH, Secunderabad and their parents, the students who are pursuing various long-term training programmes and the staff members presented cultural activities.

**Table 22 : List of students of long-term academic programmes felicitated with Citations and Merit Certificates**

Sl. No.	Name of the student	Name of the Citation & Merit Certificate
1.	Ms. Preeti	Aswani Sapra Citation
2.	Ms. Sunitha Devi	Rooplal Indravathi Citation and Merit Certificate
3.	Mr. T. Raju	Narayanas Opportunity Scholarship Citation
4.	Ms. Shikha Dwivedi	Thula Anantha Sarawathi Gold Medal, Citation and Merit Certificate



### **11.4 Block Placement of Students (Internship)**

NIMH and its Regional Centres offer Internship placement facilities for students from other educational organizations, who are pursuing professional level undergraduate and Master level programmes. During the year 2012-13, a total of 650 students from 82 institutes were placed in different departments of NIMH against 482 students from 76 institutes placed in the year 2011-12.

### **11.5 Participation in the Republic Day Parade**

The children with mental retardation from Special Education Centre and the trainees attending vocational training of NIMH headquarters participated in the 64th Republic Day Parade hosted by the Government of Andhra Pradesh on 26 January 2013.

### **11.6 VIP Visits**

Ms. Minni Mathew, Chief Secretary, Govt of AP. Visited NIMH Headquarters on 21 February 2013 to inaugurate the follow-up workshop on Incheon Strategies. During her visit, she praised the services rendered by NIMH for the welfare of the persons with mental retardation.



# ADMINISTRATION

## 12.1 Staff Strength

The revised post-based rosters as per Government of India, Ministry of Personnel & Training, Dept. of Personnel, Public Grievances and Pension contained in O.M.No.36012/2/96-Estt.(Res.), dated 02.07.1997 were adopted and followed. As on 31 March 2013, the total number of posts is given in **Tables 23 & 24.**

**Table 23 : NIMH, Secunderabad & Regional Centres**

Sl. No.	Group	Sanctioned Strength	Total filled
1.	A	26	17
2.	B	19	13
3.	C	48	41
4.	D	14	10
<b>Total</b>		<b>107</b>	<b>81</b>

- Twenty-six faculty posts have been newly created and final approval of the Ministry is awaited in this regard.

**Table 24 : NIMH MSEC, New Delhi**

Sl.No.	Group	Sanctioned Strength	Total filled
1.	A	01	01
2.	B	15	13
3.	C	08	04
4.	D	09	05
<b>Total</b>		<b>33</b>	<b>23</b>

## 12.2 Appointments/ Retirements

- Appointments:**
1. Ms.N.G.Pamyaphy was appointed to the post of Lecturer in Rehabilitation Psychology at NIMH, Secunderabad w.e.f.12.07.2012.
  2. Smt.Archana Prabhakar, Home Visitor/Teacher, NIMH MSEC, New Delhi was promoted to the post of Senior Social Worker at NIMH RC, New Delhi w.e.f.27.08.2012



- Retirements:**
1. Dr.R.K.Hora, Asst.Professor in Paediatrics retired from service on attaining the age of superannuation on 31.08.2012.
  2. Smt.Pranita P.Madkaikar, Lecturer in Special Education took voluntary retirement from service w.e.f.01.05.2012.
  3. Smt.G.Radha, Special Education Teacher retired from service on attaining the age of superannuation on 31.08.2012 .
  4. Smt.C.Sharada Devi, Sweeper retired from service on attaining the age of superannuation on 30.06.2012.

### 12.3 Activities and achievements of vigilance unit

The quarterly, half yearly and annual returns of vigilance cases were sent to various vigilance authorities as per Government of India instructions.

The Vigilance Awareness Week during the year 2012-13 was organized from 29.10.2012 to 05.11.2012. Messages/posters on Anti-Corruption were put at prominent places and a pledge was taken on 29.10.2012. Various competitions viz., slogan writing, essay-writing, posters with messages in English, Hindi, Elocution and skits were held.

### 12.4 Hindi implementation

The Institute is committed to implement the Official Language Act, Policy and rules of Government of India at its headquarters as well as its regional centres located in New Delhi, Navi Mumbai and Kolkata. The Institute made all sincere efforts to propagate Hindi as Official Language and to achieve the targets set by the Department of Official Language, Ministry of Home Affairs, Govt. of India, New Delhi by organising relevant programmes throughout the year.

#### Compliance of the rules:

The Annual Programme 2012-13 was discussed in the meeting of OLIC of the Institute and was circulated among all the departments. Every effort was made to achieve the targets set in the Annual Programme. The letters received in Hindi were replied in Hindi only and all the documents that come under Section 3(3) of the OL Act, viz., general orders, memoranda, etc., were issued bilingually. The letters that were sent to the places located in region A, B and to the central government offices in region C were sent in two languages to the extent possible.

#### Hindi Workshops:

Periodical workshops were organised on 15.6.2012, 30.11.2012, 21.12.2012 and 18.04.2013 in order to acquaint the staff with the Official Languages Act, 1963, Official Language Rules, 1976 etc. A total number of 39 staff members benefitted through these workshops.



### **Official Language Implementation Committee**

The Institute has a Rajbhasha Karyanvayan Samithi headed by the Director of the Institute and the members include Deputy Director (Admn.) who is nominated as Hindi Implementation Officer, representatives from all the departments and sections besides the Hindi staff. The committee meets quarterly to discuss issues relating to implementation of Official Language and various steps to propagate Hindi as Official Language. Four meetings of the OLIC were organised on 17.8.2012, 17.10.2012, 16.01.2013 and 25.04.2013.

### **Training**

As per the orders of Govt. of India, the staff members are sent for training in Hindi language, typing and stenography to the Central Hindi Teaching Scheme. During the year under report four staff members were nominated for training in Hindi language and they passed the examination and received cash award for obtaining distinction. They were also sanctioned 'personal pay' as per the rules.

### **Hindi Fortnight celebrations**

With a view to propagating and encouraging the staff members to work in Hindi, the Hindi Fortnight was celebrated in the Institute from 14 to 28 September 2012. During the celebrations the staff were acquainted with various rules of the official language. In order to motivate the staff to work in Hindi and understand the simplicity of the language, following competitions were organised for the staff and students of the Institute:

a) Hindi Dohen, b) Dictation, c) Reading, d) Aapbithi Ghatna ya Sapna, e) Paribhashik shabdavali Aur Vakya, f) Hindi typing, g) Quiz programme, h) Noting and drafting.

The winners of the competitions were given prizes during the closing ceremony of fortnight celebrations. The total amount spent for the programmes was Rs.36,742/-.

### **Periodical returns**

The Institute submitted timely quarterly and annual returns on the usage of Hindi in the prescribed form to the Ministry.

Apart from the above, message boards were displayed in Hindi at various places in the Institute's campus while "Learn a Hindi Word every day" is being continued in all the departments.

## **12.5 Construction of buildings (Estate)**

### ***Construction work at RCs:***

#### **Works at RC, NIMH, Navi-Mumbai**

NIMH has proposed to construct a new building for NIMH RC in Navi Mumbai with a built of area of 4438.70 Sqm (Ground + 6 floors). The estimated cost of the proposed building Rs.18.42 crores. The proposal is being submitted to the Ministry for approval to get the work done through CPWD.



## 12.6 Council Meetings

The details of the council meetings of the Institute held during 2012-13 are presented in **Table 25**. The names of the nominated members under each Council are presented at **Appendices 9, 10 & 11**.

**Table 25 : Details of the Council Meetings during the year**

Sl. No.	Meeting	Number	Date	Place
1	General Council	33 <sup>rd</sup>	30.01.2013	MSJ&E, New Delhi
2	Executive Council	96 <sup>th</sup>	23.04.2012	MSJ&E, New Delhi
3	Executive Council	97 <sup>th</sup>	19.06.2012	IPH, New Delhi
4	Executive Council	98 <sup>th</sup>	19.10.2012	MSJ&E, New Delhi
5	Executive Council	99 <sup>th</sup>	13.06.2013	MSJ&E, New Delhi
6	Academic Committee	—	01.02.2013	NIMH, Secunderabad

## 12.7 Right to Information Act 2005

NIMH has been implementing the Right to Information Act 2005 since the year 2005. Under Section 4(1)(b) of the Right to Information Act., 2005, the website of the institute has uploaded the relevant information about the institute in the separate provision given for RTI Act. The institute has the Public Information Officer (PIO) at a group A level officer, an Assistant Public Information Officer at group B level and an Appellate Authority at group A level. Apart from these officials, the Regional Centres of NIMH at New Delhi, Kolkata and Navi Mumbai have the Officer Incharge as Assistant Public Information Officer. The NIMH MSEC has the Principal as the Assistant Public Information Officer. During the year 2012-13, the institute received 57 applications under RTI and 43 were disposed off.

---

# INSTITUTE COMMITTEES

The Bye-Laws of NIMH provides the following committees to transact its activities:

- ❖ General Council (Appendix-5, Page No. 89)
- ❖ Executive Council (Appendix-6, Page No. 91)
- ❖ Academic Committee (Appendix-7, Page No. 92)
- ❖ Ethics Committee
- ❖ Internal Committees
  - Purchase Committee
  - Administrative Coordination Committee
  - Cadre Review Committee
  - Catering Committee
  - Committee for Granting Study Leave
  - Course Coordinators Committee
  - Estate Committee
  - Faculty Coordination Committee
  - General Services Committee
  - Hygiene Committee
  - Internal Complaints Committee
  - IT Committee
  - Management Review Committee
  - Staff Quarters Committee
  - Students Committee
  - Tender Opening Committee
  - Anti Ragging Committee

# ACCOUNTS AND FINANCE

The financial position of the Institute for the year 2012-13 as compared to 2010-11 and 2011-12, is as given below.

**Table 26 : Financial Position of the Institute**

Description	Description	2010-11 (Rs. in lakhs)	2011-12 (Rs. in lakhs)	2012-13 (Rs. in lakhs)
1. Opening Balances	(a) Plan fund	308.23	551.57	374.85
	(b) NE Activities	102.48	155.19	79.95
	(c) ADIP Activities	176.22	180.67	164.12
	(d) Pension Account	195.42	228.67	213.62
	(e) Others	177.47	183.01	285.09
	<b>Total (a+b+c+d+e)</b>	<b>959.82</b>	<b>1,299.11</b>	<b>1,117.63</b>
2. Grants from Ministry	(a) Plan	1,067.38	657.80	270.00
	(b) Non-Plan	430.00	431.31	433.50
	(c) NE Activities	100.00	96.00	121.00
	(d) ADIP	—	—	—
	<b>Total (a+b+c+d)</b>	<b>1,597.38</b>	<b>1,185.11</b>	<b>824.50</b>
3. Receipts from other sources- Other loans & advances		41.18	56.51	245.56
4. Interest earned		30.41	58.82	65.85
5. Internal Receipts		79.29	89.72	102.36
	<b>Grand Total (1+2+3+4+5)</b>	<b>2,723.41</b>	<b>2,702.61</b>	<b>2,355.90</b>
6. Expenditure	(a) Plan	824.04	834.52	732.74
	(b) NE Activities	47.29	171.24	30.93
	(c) Non-Plan	450.55	390.79	438.45
	(d) ADIP Activities	3.18	26.87	67.69
	(e) Pension Payments	69.59	110.30	149.09
	(f) Others	29.71	51.26	211.35
	<b>Total (a+b+c+d+e+f)</b>	<b>1424.36</b>	<b>1,584.98</b>	<b>1,630.25</b>
7. Balance available	(a) Plan fund	551.57	374.85	—
	(b) NE Activities	155.19	79.95	82.13
	(c) ADIP Activities	180.67	164.12	104.23
	(d) Pension Account	228.67	213.62	272.06
	(e) Others	183.01	285.09	267.23
	<b>Total (a+b+c+d+e)</b>	<b>1,299.11</b>	<b>1,117.63</b>	<b>725.65</b>



During the year 2012-13, the Institute received an amount of Rs.2,355.90 lakhs as receipts including the opening balance, which were credited to the Institute's Savings Bank accounts in Public Sector Banks.

Out of the amount of Rs.2,355.90 lakhs, a sum of Rs.1,630.25 lakhs was spent during the year 2012-13 on planned programmes as per the objectives of plan, non-plan and other activities, leaving a balance of Rs.725.65 lakhs.

The Balance sheet as on 31.03.2013, Income and Expenditure Account for the year 2012-13, Schedules 1-25 as per the format and the Receipts and Payments Account for the year 2012-13 of the Institute along with the audit certificate are attached to this annual report.

### **AUDIT CERTIFICATE**

Audit Report on the Accounts of National Institute for the Mentally Handicapped, Secunderabad for the year 2012-13 is attached.



**प्रधान निदेशक लेखापरीक्षा (केन्द्रीय) का कार्यालय**  
आन्ध्र प्रदेश, हैदराबाद - 500 004.

**OFFICE OF THE**  
**PRINCIPAL DIRECTOR OF AUDIT (CENTRAL)**  
ANDHRA PRADESH,  
HYDERABAD - 500 004.  
**E-Block, 1<sup>st</sup> Floor**  
(Phone No: 040-23232069)

No.PDA(C)/CAB/Unit-IV/NIMH/SAR.2012-13/D215/2013-14/272 | Date: 01.10.2013

सेवा में  
सचिव महोदय,  
विकलांगता मामलों के विभाग,  
सामाजिक न्याय और अधिकारिता मंत्रालय,  
डॉक्टर राजेंद्र प्रसाद रोड, शास्त्री भवन,  
नई दिल्ली - 110 001

महोदया,  
विषय: राष्ट्रीय मानसिक विकलांग संस्थान (NIMH), सिकंदराबाद के वर्ष  
2012-13 के Accounts पर पृथक लेखापरीक्षा प्रतिवेदन

\*\*\*\*\*

Separate Audit Report on the Accounts of National Institute for the Mentally Handicapped (NIMH), Secunderabad for the year 2012-13, Annexure thereof and one copy of the Annual Accounts of the Institute for the year 2012-13 are forwarded herewith for placing before the Parliament.

The dates of presentation of Separate Audit Report in both the Houses of Parliament may please be intimated.

Receipt of this letter along with the enclosures may kindly be acknowledged.

भवदीय,

Sd/-

(SADU ISRAEL)

संल:यथोपरि

प्रधान निदेशक लेखापरीक्षा (केन्द्रीय)

Endt. No.PDA(C)/CAB/Unit-IV/NIMH/SAR.2012-13/D215/2013-14/ 272 | Date: 01-10-2013

Copy to the Director, National Institute for the Mentally Handicapped, Manovikasnagar, Secunderabad-500 009 along with one copy of Annual Accounts for the year 2012-13 (English version), with a request to furnish Hindi version of the approved Annual Accounts 2012-13 (2 sets) to this Office.

रोली शुकला माल्गे

संल:यथोपरि

(ROLI SHUKLA MALGE)

निदेशक/ प्रत्यक्ष कर & केन्द्रीय स्वायत्त निकायों  
DIRECTOR/DT & CAB





**Separate Audit Report of the Comptroller & Auditor General of India on the Accounts of the National Institute for the Mentally Handicapped (NIMH), Secunderabad for the year ended 31 March 2013**

We have audited the attached Balance Sheet of the National Institute for the Mentally Handicapped (NIMH), Secunderabad as at 31 March 2013, Income & Expenditure Account and Receipts & Payment Account for the year ended on that date under Section 20(1) of the *Comptroller & Auditor General's (Duties, Powers & Conditions of Service) Act, 1971*. The audit of the Accounts of the Institute has been entrusted to the Comptroller and Auditor General of India for the period up to 2013-14. These financial statements include the accounts of four sub-units of NIMH, i.e. three Regional Centers at New Delhi, Kolkata, Mumbai and a Model Special Education Centre at New Delhi. These financial statements are the responsibility of the Institute's Management. Our responsibility is to express an opinion on these financial statements based on our audit.

2. This Separate Audit Report contains the comments of the Comptroller & Auditor General of India (CAG) on the accounting treatment only with regard to classification, conformity with the best accounting practices, accounting standards and disclosure norms, etc. Audit observations on financial transactions with regard to compliance with the Law, Rules & Regulations (Propriety and Regularity) and efficiency-cum-performance aspects, etc., if any, are reported through Inspection Reports/CAG's Audit Reports separately.

3. We have conducted our audit in accordance with auditing standards generally accepted in India. These standards require that we plan and perform the audit to obtain reasonable assurance about whether the financial statements are free from material misstatements. An audit includes examining, on a test basis, evidences supporting the amounts and disclosures in the financial statements. An audit also includes assessing the accounting principles used and significant estimates made by management, as well as evaluating the overall presentation of financial statements. We believe that our audit provides a reasonable basis for our opinion.



4. Based on our audit, we report that:
- i We have obtained all the information and explanations which to the best of our knowledge and belief were necessary for the purpose of our audit;
  - ii The Balance Sheet, Income & Expenditure Account and Receipts & Payment Account dealt with by this report have been drawn up in the format approved by the Ministry of Finance.
  - iii In our opinion, proper books of accounts and other relevant records have been maintained by the Institute as required under Finance Bye-law 6 of NIMH, in so far as it appears from our examination of such books.
- iv. We further report that:

## A .BALANCE SHEET

### A. 1. Liabilities

#### A.1.1 Current Liabilities and Provisions: ₹ 11.37 crore (Schedule -7)

A1.1.1.This includes excess provision of ₹ 1,64,606/- made towards Retirement Gratuity in respect of two employees<sup>1</sup> due to incorrect adoption of completed half yearly periods, which resulted in understatement of Corpus/Capital Fund and overstatement of Current Liabilities as well as expenditure by ₹ 1.64 lakh.

---

<sup>1</sup> Sri D.Laxmaiah, ₹ 18,860/- and Smt K. Amaravathamma: ₹ 1,45,746/-,  
Total : ₹ 1,64,606/-



## A.2. Assets

### A2.1 Fixed Assets: ₹ 18.57 crore (Schedule-8)

**A2.1.1** Against final expenditure of ₹ 2,30,82,410/-<sup>2</sup> to the end of 31<sup>st</sup> March of the year in respect of completed deposit work of 'Construction of Millennium Block' reported by CPWD, Hyderabad, the Institute capitalized an amount of ₹ 2,03,32,437/-<sup>3</sup> during the year. The difference of ₹ 27,49,973/- had resulted in understatement of Fixed Assets and overstatement of advances under Current Assets by ₹ 27.5 lakh.

## B. Income and Expenditure Account

### B.1 Income: ₹ 6.34 crore

**B.1.1** This does not include penal interest of ₹ 11,55,395/-<sup>4</sup> on excess payment made to a firm (2008-09) and adjusted along with principal amount from the supplies made by the firm during the year, which was incorrectly accounted for as prior period income. This was not in consonance with Accounting Standard-5 and had resulted in understatement of Income for the year and overstatement of prior period income and consequently overstatement of Deficit by ₹ 11.55 lakh for the year.

**B.1.2** This does not include Sundry Creditors amount of ₹ 3,08,500/-<sup>5</sup>, treated as unclaimed and written back during the year, which was incorrectly accounted for as prior period income. This was not in consonance with Accounting Standard-5 and had resulted in understatement of Income for the year and overstatement of prior period income and consequently overstatement of Deficit by ₹ 3.08 lakh for the year.

<sup>2</sup> Civil: ₹ 2,16,67,691/- and Electrical: ₹ 14,14,719/- (both expenditure to the end of March 2013)

<sup>3</sup> Civil: ₹ 1,89,17,718/- (expenditure to the end of September 2012) and Electrical: ₹ 14,14,719/- (expenditure to the end of March 2013)

<sup>4</sup> Penal interest levied on the principal amount of ₹ 39,76,272/- for the period from 2008-09 to 2011-12: ₹ 9,91,183/- and for 2012-13: ₹ 1,64,212/-

<sup>5</sup> (i) Earnest Money Deposit lying unclaimed for more than three years of ₹ 88,000/- and (ii) Excess amount of ₹ 2,20,500/- pertaining to Aliyavar Jung National Institute of Hearing Handicapped (AYJNIHH), lying with NIMH and remaining unclaimed.



## B.2 Expenditure: ₹ 18.15 crore

**B.2.1** Short provision of depreciation of ₹ 1,38,930/-, due to misclassification of Plant Machinery & Equipment, Electrical Installation and Water Supply items (15% depreciation) valuing ₹ 27,78,603/-<sup>6</sup> under Buildings (10% depreciation) had resulted in understatement of Expenditure and overstatement of Fixed Assets by ₹ 1.39 lakh.

## C. Effect of Audit Comments on Accounts

The net impact of Audit comments given in preceding paragraphs is overstatement of Liabilities by ₹ 14.63 lakh, Assets by ₹ 1.39 lakh and Deficit by ₹ 13.24 lakh.

**D. Grants- in- aid:** Out of total Grants-in-aid of ₹ 8.43 crore received during the year {Plan: ₹ 2.7 crore (₹ 1.44 crore received in March 2013), Plan –North East: ₹ 1.21 crore (received in March 2013), Non-plan: ₹ 4.52 crore (₹ 0.45 crore received in March 2013) }, together with internal receipts of ₹ 0.43 crore<sup>7</sup> and unspent balance of ₹ 6.32 crore pertaining to previous year, totalling ₹ 15.18 crore, the Institute had utilized a sum of ₹ 12.58 crore<sup>8</sup>, leaving a balance of ₹ 2.6 crore unutilised as on 31<sup>st</sup> March 2013.

## E. Management Letter

Deficiencies which have not been included in the Separate Audit Report have been brought to the notice of the Director, National Institute for the Mentally Handicapped (NIMH), Secunderabad through a Management letter issued separately for remedial/corrective action.

<sup>6</sup> (i) Diesel Generator Set: ₹ 19,68,841/- (ii) Flood Lighting: ₹ 1,12,902/- (iii) Under Ground Electrical Cable: ₹ 59,924/- and (iv) Borewells with Pumpsets: ₹ 6,36,936/-

<sup>7</sup> Recovery of loans and advances from Staff: ₹ 10,58,030/-, Interest earned on loans: ₹ 5,59,757/- and Interest earned on Plan & Non-Plan funds: ₹ 26,82,614/-, Total : ₹ 43,00,401/-

<sup>8</sup> Plan: Revenue: ₹ 6,81,94,630/- and Capital: ₹ 81,54,250/-, Total : ₹ 7,63,48,880/- and Non-Plan: ₹ 4,95,00,401/-, Total: ₹ 12,58,49,281/-



v. Subject to our observations in the preceding paragraphs, we report that the Balance Sheet, Income & Expenditure Account and Receipts & Payment Account dealt with by this Report are in agreement with the books of accounts.

vi. In our opinion and to the best of our information and according to the explanations given to us, the said financial statements read together with the Accounting Policies and Notes on Accounts, and subject to the significant matters stated above and other matters mentioned in Annexure to this Audit Report, give a true and fair view in conformity with accounting principles generally accepted in India:

a. In so far as it relates to the Balance Sheet, of the state of affairs of National Institute for the Mentally Handicapped (NIMH), Secunderabad as at 31 March 2013; and

b. In so far as it relates to Income & Expenditure Account of the *Deficit* for the year ended on that date.

**(SADU ISRAEL)**

**Principal Director of Audit (Central)**



## ANNEXURE TO SEPARATE AUDIT REPORT

1. **Adequacy of Internal Audit System:** The Internal audit was entrusted to a Chartered Accountants firm, which completed the audit for the year. The system of internal audit was adequate.
2. **Adequacy of Internal Control System:** Internal controls were adequate.
3. **System of Physical verification of fixed assets:** Physical verification of fixed assets for the year 2012-13 was under progress. Physical verification reports of fixed assets for the year 2011-12 in respect of (i) Department of Rehabilitation Psychology (ii) Department of Special Education and (iii) Library Books were awaited from the nominated Committees.
4. **System of Physical verification of Inventory:** Physical verification of Inventory for the year 2012-13 was under progress. Physical verification of Inventory, though stated to have been completed for the year 2011-12, the related reports were still awaited from the nominated Committee.
5. **Regularity in payment of statutory dues:** Statutory dues were paid regularly.

**(ROLI SHUKLA MALGE)**

निदेशक/ प्रत्यक्ष कर & केन्द्रीय स्वायत्त निकायों  
DIRECTOR/DT & CAB

**FORM OF FINANCIAL STATEMENTS (NON-PROFIT ORGANISATIONS)**

Name of Entity: National Institute for the Mentally Handicapped, Secunderabad

**BALANCE SHEET AS AT 31st MARCH, 2013**

(Amount in Rs.)

	Schedule	Current Year	Previous Year
<b>CORPUS/CAPITAL FUND AND LIABILITIES</b>			
CORPUS/CAPITAL FUND	1	187,849,942	235,433,473
RESERVES AND SURPLUS	2	0	56,579,104
EARMARKED/ENDOWMENT FUNDS	3	40,649,588	87,947,713
SECURED LOANS AND BORROWINGS	4	0	0
UNSECURED LOANS AND BORROWINGS	5	0	0
DEFERRED CREDIT LIABILITIES	6	0	0
CURRENT LIABILITIES AND PROVISIONS	7	113,765,325	109,837,557
<b>TOTAL</b>		<b>342,264,855</b>	<b>489,797,847</b>
<b>ASSETS</b>			
FIXED ASSETS	8	185,729,818	285,304,470
ADD: PRIOR PERIOD ADJUSTMENTS IN ASSETS			
INVESTMENTS-FROM EARMARKED/ENDOWMENT FUNDS	9	398,204	366,119
INVESTMENTS-OTHERS	10	20,002,000	17,626,764
CURRENT ASSETS, LOANS, ADVANCES ETC.	11	134,028,764	184,703,862
MISCELLANEOUS EXPENDITURE (to the extent not written off or adjusted)			
GPF DEFICIT		2,106,069	1,796,632
<b>TOTAL</b>		<b>342,264,855</b>	<b>489,797,847</b>
SIGNIFICANT ACCOUNTING POLICIES	24		
CONTINGENT LIABILITIES AND NOTES ON ACCOUNTS	25		



ACCOUNTS OFFICER



DEPUTY DIRECTOR (ADMN)



DIRECTOR



## FORM OF FINANCIAL STATEMENTS (NON-PROFIT ORGANISATIONS)

Name of Entity: National Institute for the Mentally Handicapped, Secunderabad

### Income and Expenditure Account for the period ended 31st March, 2013

(Amount in Rs.)

	Schedule	Current Year	Previous Year
<b>INCOME</b>			
Income from Sales/Services	12	938,367	730,708
Grants/Subsidies	13	45,200,000	43,131,000
Fees/Subscriptions	14	7,240,950	6,665,800
Income from Investments (Income on Invest. From earmarked/ endow. Funds transferred to Funds)	15	0	0
Income from Royalty, Publication etc.	16	1,444,988	564,380
Interest Earned	17	4,732,053	5,359,771
Other Income	18	737,996	1,022,807
Increase/(decrease) in stock of Finished goods and works-in-progress	19	3,133,445	2,231,871
Prior period adjustments		0	0
<b>TOTAL (A)</b>		<b>63,427,799</b>	<b>59,706,337</b>
<b>EXPENDITURE</b>			
Expenditure on Program & Services	20	93,197	240,453
Establishment Expenses	20A	52,022,227	47,665,987
Other Program Expenditure	20B	0	0
Other Administrative Expenses etc.	21	5,939,222	6,037,614
Expenditure on Grants, Subsidies etc.	22	0	0
Interest	23	0	0
Depreciation (Net Total at the year-end - corresponding to Schedule 8)		123,452,510	11,042,750
Adjustment of previous year		0	0
<b>TOTAL (B)</b>		<b>181,507,156</b>	<b>64,986,804</b>
Balance being excess of Income over Expenditure (A-B)			
Transfer to Special Reserve (Specify each)			
Transfer to/from General Reserve			
<b>BALANCE BEING SURPLUS/(DEFICIT)</b>		<b>-118,079,357</b>	<b>-5,280,467</b>
<b>CARRIED TO CORPUS/CAPITAL FUND</b>			
SIGNIFICANT ACCOUNTING POLICIES	24		
CONTINGENT LIABILITIES AND NOTES ON ACCOUNTS	25		

*Goby*  
ACCOUNTS OFFICER

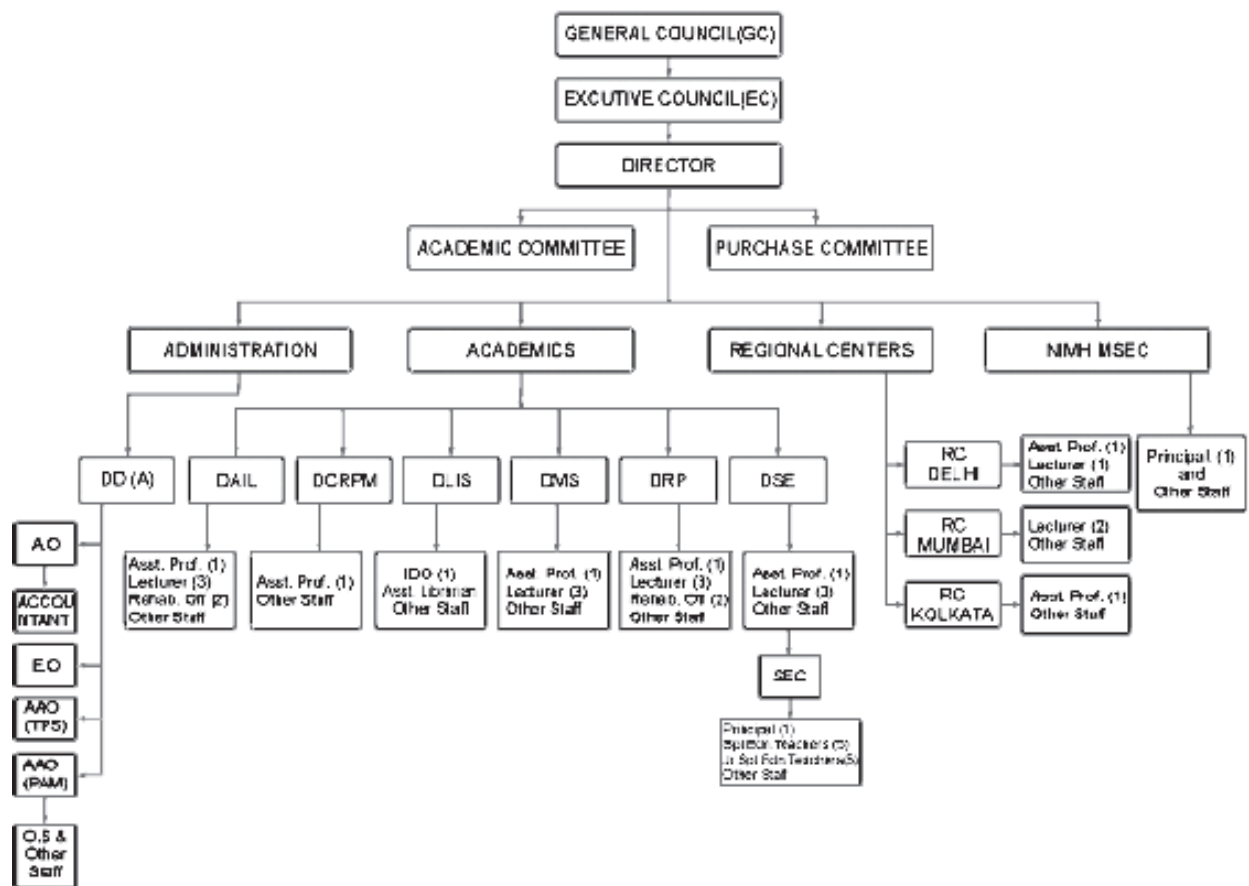
*W*  
DEPUTY DIRECTOR (ADMIN)

*[Signature]*  
DIRECTOR





# NIMH - ORGONOGRAM



LEGEND	
DAIL	- Department of Adult Independent Living
DCRPM	- Department of Community Rehabilitation and Project Management
DLIS	- Department of Library Information Services
DMS	- Department of Medical Sciences
DRP	- Department Rehabilitation Psychology
DSE	- Department of Special Education
RC	- Regional Centre
NMH MSEC	- NIMH Model Special Education Centre
SEC	- Special Education Centre

## Short Term Training Programmes

Sl. No.	Training Programme	Conducted by	Days	Duration	No. of Beneficiaries
1	CRE Programme on Music, Dance & Drama	NIMH RC, Navi Mumbai	5	4-8 June, 2012	50
2	Five Days Short Term Program for teachers and professionals of Asha Awwa School, Jhansi (UP)	NIMH RC, New Delhi	5	18-22 June, 2012	21
3	Short Term Training Program on Community Based Rehabilitation	NIMH Secunderabad	5	9 -13 July, 2012	09
4	Training Programme on Behavior Modification for Persons with MR	NIMH RC, Navi Mumbai	5	6-10 August, 2012	30
5	Developmental Disabilities: Identification and its Management.	NIMH RC, New Delhi	5	6-8 August, 2012	4
6	Training Programme on Behaviour Modification for Psychologists & Special Educators	NIMH RC, Kolkata	5	6-10 August, 2012	39
7	Preschool Education: Different Aspect and Recent Trends	NIMH RC, Kolkata	5	20-24 August, 2012	39
8	Training Programme on "Inclusive Education"	NIMH RC, Navi Mumbai	5	27-31 August, 2012	30
9	Counselling in Rehabilitation	NIMH, Secunderabad	5	27- 31 August, 2012	5
10	Work Behavior in Adults with Mental Retardation	NIMH MSEC, New Delhi	5	27-31 August, 2012	22
11	Management of Children with Cerebral Palsy	NIMH RC, New Delhi	5	3-7 September, 2012	13



Sl. No.	Training Programme	Conducted by	Days	Duration	No. of Beneficiaries
12	Training programme on "Enhancing cognitive and perceptual skill for children with developmental delay Inclusive Education	NIMH RC, Navi Mumbai	5	24-28 September, 2012	30
13	Behavior Modification for Adults in Vocational setting	MSEC, New Delhi	5	24-28 September, 2012	06
14	Training Programme on "Vocational Rehabilitation"	NIMH RC, Navi Mumbai	5	8-12 October, 2012	28
15	STP on 'Communication Aspects of Autism'	NIMH, Secunderabad	5	8-12 October, 2012	15
16	Programme On Stress Management For Professionals In Rehabilitation	NIMH, Secunderabad	5	15-19 October, 2012.	13
17	Orientation Towards working with families having Children with Mental Retardation	NIMH RC, New Delhi	5	15-19 October, 2012	23
18	Development of individualized workstations and job simplifications	NIMH RC, Navi Mumbai	5	22-26 October, 2012	24
19	Training Programme on Counselling in Rehabilitation for North East Region Participants	NIMH, Secunderabad	5	29 October to 2 November 2012	15
20	Training Programme on "Community based Rehabilitation for persons with Mental Retardation	NIMH RC, Navi Mumbai	5	5-9 November, 2012	28
21	Short term training programme on therapeutics for professionals	NIMH, Secunderabad	5	5-9 November, 2012	6
22	Workshop on Learning Disability	NIMH RC, New Delhi	5	5-9 November 2012	40



Sl. No.	Training Programme	Conducted by	Days	Duration	No. of Beneficiaries
23	Training Programme on "Functional Academic Skills	NIMH RC, Navi Mumbai	5	19-23 November, 2011	30
24	Vocational Rehabilitation A Venues & Estabilition Vocational Training Centres.	NIMH, Secunderabad	5	19-23 November, 2012	07
25	Vocational rehabilitation: Concept and Execution	NIMH RC, Kolkata	5	19-23 November, 2012	40
26	Workshop on Early Identification and Intervention of Children with Developmental Delay/ at risk	NIMH RC, New Delhi	5	3-7 December 2012	23
27	Training programme on screening & identification of Disabilities (including Visual & Hearing), Early Childhood Special education, Early Intervention & Parental counseling	NIMH, Secunderabad	19	3-21 December, 2012	18
28	Inclusive Education and Curricular Adaptation for the Children with MR"	NIMH MSEC, New Delhi	5	10-14 December, 2012	22
29	Training Programme on "Workshop on Sensory integration for developmental disabilities"	NIMH RC, Navi Mumabi	5	10-14 December, 2012	30
30	Community Based Rehabilitation	NIMH RC, Kolkata	5	10-14 December, 2012	40
31	Training Programme on "Assessment in Special Education"	NIMH RC, Navi Mumbai	5	17-21 December, 2012	22



Sl. No.	Training Programme	Conducted by	Days	Duration	No. of Beneficiaries
32	Computer Software Training for Special Educators	NIMH, Secunderabad	5	17-21 December, 2012	8
33	Training Programme on "Psychological Assessment"	NIMH RC, Navi Mumbai	5	7-11 January, 2013	24
34	Training Programme on "Readiness Skills"	NIMH RC, Navi Mumbai	5	21-25 January, 2013	30 30
35	Training Programme on Behaviour Modification	NIMH, Secunderabad	5	21-25 January, 2013	16
36	Five Days STP on Psychological Evaluation of children with Intellectual Disability, Autism Spectrum Disorder, and Learning Disability	NIMH RC, New Delhi	5	21-25 January 2013	32
37	Parent Professional Networking	NIMH MSEC, New Delhi	5	21-25 January 2013	13
38	Five Days STP on Development and use of Teaching Learning Material	NIMH RC, New Delhi	5	7-11 January 2013	35
39	Work behavior of Adult persons with MR.	NIMH, Secunderabad	5	28 January, to 1 February, 2013	20
40	Learning Disability: Inclusive Technology"	NIMH RC, Kolkata	5	28 January to 2 February 2013	40
41	Training Programme on "Learning Disability "	NIMH RC, Navi Mumbai	5	4-8 February, 2013	26
42	Training Programme on "Capacity Building in NGO's"	NIMH RC, Navi Mumbai	5	18-22 February, 2013	30



Sl. No.	Training Programme	Conducted by	Days	Duration	No. of Beneficiaries
43	Vocational training and Employment of Adult persons with Mental Retardation.	NIMH, Secunderabad	4	25 February to 3 March 2013	11
44	National Conference on "Early Intervention of Developmental Disabilities"	NIMH, Secunderabad	2	7-8 March, 2013	280
45	Vocational Training for Persons with Mentally Handicapped	NIMH, Secunderabad	6	11-15 March 2013	06
	<b>Total</b>				<b>1293</b>

### Details of ADIP Scheme Inspections

S. No.	Name of the Organisation	Date of Inspection
	<b>ANDHRA PRADESH</b>	
1	Aathmeeya Manasika Vikasa Kendram (Special School & VTC for MR) 12-13-830/15, Gokul Nagar, Tarnaka, Hyderabad – 500 017	28.07.2012
2	ANURAAG (Early Intervention, Day Care Centre for MR Children) Flat No.202, 2 <sup>nd</sup> Floor, Ushodaya enclave, 27&28, Ushodaya Colony, Gudimalkapur, Hyderabad – 500 028.	31.07.2012
3	Anuraag Human Services (Resi. & Day Care Training Centre for Mentally Challenged) 9-4-136/B, Tombs Road, Tollichowki, Hyderabad–500 008	31.07.2012
4	Swayamkrushi 17, Sri Malani Housing Cooperative Society India Airlines Colony, Trimulgherry, Secunderabad – 500 015	19.07.2012
5	Hellen Kellers School for the Deaf & Institute of Research & Rehabilitation for the Disabled Children. Bank Colony, Ramkrishtapuram, Secunderabad – 500 056, Andhra Pradesh	26.07.2012
6	PAWMENCAP (Parents Association for the Welfare of the Mentally Handicapped Persons) (MANOCHETNA) # 10-3-16/B/2, MCH Colony, Humayun Nagar, Mehdipatnam, Hyderabad – 500 028	27.08.2012
7	PAMENCAP (Parents Association for the Mentally Handicapped Persons) (MANOKRUSHI) Plot No.77, Old Vasavinagar, Karkhana, Sec'bad – 500 015.	23.08.2012
8	Arun Special Centre (Day Care, Resi. VTC for MR Special School) Block No.:8-15-5(2), Shastripuram, Near MIR-Alam-Filters, RR Dist, Hyderabad – 500 077	01.09.2012





S. No.	Name of the Organisation	Date of Inspection
9	Mother Theresa School for the Blind, Shivaji Nagar, Ext. 2 <sup>nd</sup> lane, Gandhi Nagar, Mangamoor Rd, Ongle - 2	12.09.2012
10	Voluntary Organisation for the Impaired Children Education (VOICE) 4-404/7 FCI Colony, Sarpavaram Road, East Godavari Dist. Kakinada – 533 005	29.09.2012
11	Annamma School for Deaf D.No. 7-42, Ibrahimpatnam VTPS Road, Near SBI Campus, Ibrahimpatna, Vijayawada AP	19.09.2012 20.09.2012
12	Immaculate Heart of Mary Society Residential School for Deaf Modonna Special Institute for the Deaf Carmel Nagar, Gunadala, Vijayawada – 520004 AP	20.09.2012
13	Ravicherla Integrated Development and Education Society, Banginapally Thota, Nuzivid	21.09.2012
14	Sweekar Rehabilitation Institute for the Handicapped, Upkaar Complex, Upkaar Junction, Secunderabad – 500 003. AP.	26.12.2012
15	District Disability Rehabilitation Centre H.No.5-6-300, Near RTC Bus Stand, Bottuguda, Nalgonda - 508 001, Andhra Pradesh	06.12.2012
16	Development & Welfare Association of the Blind, Hostel & Special School for VH, Surdas Bhavan, Nalgonda, Andhra Pradesh	06.12.2012
17	Surya Kiran Parents Association for the Welfare of MH, Nalgonda Door No. 11-3-16, Macherala – 522 426, Guntur District. Andhra Pradesh	06.12.2012 & 07.12.2012
18	Aasha Jyothi Welfare Association for Disabled Residential & Special School for the MR & Multiple Handicapped H.No.3-156/2/A, Tondan Sadan, Ravindra Nagar, Nandipahad Village, Chillapur Road, Miryalaguda– 508207, Nalgonda District, Andhra Pradesh	07.12.2012
19	VELUGU Residential School for Mentally Retarded 1-1044, Bangalore Rural. Madanapally, Chittoor District – 517325 Andhra Pradesh	16.02.2013



S. No.	Name of the Organisation	Date of Inspection
20	People's Action for Social Services (PASS) Special School for Mentally Retarded Children 7-125A/ Srinagar Colony, M.R. Palley, Tirupati Andhra Pradesh	16.02.2013
21	Andhra Pradesh State Forum for Economically Weaker Section Residential Special School for MR H.No. 6-9-7, Namdevwada, Nizamabad – 503 002, Andhra Pradesh.	19.03.2013
22	Voluntary Organization of Rural Development Society Navjeevan Residential Special School for Deaf H.No. 4-174S, Ayyalurimetta, Ponnapuram(P), Nandyal, Kurnool – 518 502. AP.	22.03.2013
23	Dakshinya Bhava Samithi 3-12-2, 3 <sup>rd</sup> line, Old Pattabhipuram, Guntur – 522 006, Andhra Pradesh	25.03.2013
24	Lebenshilfe for the Mentally Handicapped Regd. Off: 26, Lawsons bay colony, Vishakhapatnam – 17. AP	27.03.2013
25	Chaitanya Disabled Welfare Society Resi & Day Care Trg. Centre for MR & CP Rammandiram Road, Vittalnagar, Chirala, Prakasam Dist., Andhra Pradesh	25.03.2013
26	Vutukuri Venkata Subbamma Welfare Society Voc. Trg. & Rehab. Centre, TCMA Building, Kotla Bazar, Chirala, Prakasam District – 523 155, Andhra Pradesh	25.03.2013
27	Chaitanya Mahila Mandali, Special School for Deaf D.No. 1-63/9, Ramnagar, MRO Office, Singara Konda Road, Addanki, Prakasam Dist.–523 201, Andhra Pradesh	26.03.2013
28	Lakshmi Mahila Mandali, VTC & Rehabilitation of PH Nuthalapadu Post, Parchoor Mandal, Prakasam Dist.– 523 169, Andhra Pradesh	25.03.2013
29	District Disability Rehabilitation Centre (DDRC) Indian Red Cross Society Building, Santapeta, Near Collectorate Office, Ongole, Prakasam District – 523 001 Andhra Pradesh	26.03.2013
30	Rashtriya Seva Samithi Day Care Centre for Mentally Challenged Children Seva Nilayam Annamayya Marg, Tirupati – 517 501, Andhra Pradesh	25.03.2013



S. No.	Name of the Organisation	Date of Inspection
31	Rashtriya Seva Samithi Special School for Disabled at Sahayagram, Renigunta Mandal Chittoor District, Andhra Pradesh	25.03.2013
32	Rashtriya Seva Samithi Residential School for MR Children Sahayagram, Karakambadi Post, Renigunta Mandal, Chittoor District	26.03.2013
33	Rashtriya Seva Samithi Day Care Centre for MR at Proddatur Kadapa District Venkateshwar Petta, Super Bazar Road, Poddatur, Kadapa District, Andhra Pradesh	27.03.2013
34	Rashtriya Seva Samithi Special School for MR Children Kavur nagar, Anantapur, Andhra Pradesh	28.03.2013
35	Rural India Medical & Relief Society, Day Care Residential Institute for the MR. Door No. 23-36, Ayaakannu Street, New Pet, Palamaner, Chittoor District, Andhra Pradesh	26.03.2013
36	AL-Shifa Minority Institution for Mentally Retarded & Old Age Residential School for MR 6-104, 5 <sup>th</sup> cross, Ravindra Nagar, Kadapa, Andhra Pradesh	27.03.2013
	<b>KARNATAKA</b>	
37	Divya Jyothi Education Society , (Resi. School for MR) Shiggon Tq, Haveri, Industrial Area, Opp Hire Goudar Motors, Near Tuppada Building, PB Road , Haveri, Karnataka	27.07.2012
38	Honnamma Education Society, (Residential School for Deaf Children) Near Toll Naka, Saraswatpur, Dharwad– 580 002 Karnataka	20.07.2012
39	Angavikara Ashakiran Trust, (Resi.School & VTC for MR) Shamanur Road, Near Laxmi Flour Mill, Davangere – 577 004, Karnataka	01.08.2012
40	Adarsh Industrial Society Post box no. 481, Sangankal, Bellary 583103 – Karnataka	10.08.2012



S. No.	Name of the Organisation	Date of Inspection
41	District Disability Rehabilitation Centre, VIMS Campus, Old blood bank building, Bellary – 583 104 AP	07.08.2012 09.08.2012
42	Spastics Society of Karnataka, Bangalore 31, 5 <sup>th</sup> Cross, 5 <sup>th</sup> Main, Indiranagar, 1 <sup>st</sup> Stage, Bangalore - 560038	09.10.2012 10.10.2012 11.10.2012
43	Akhila Karnataka Virashiva Mahasabha, Basavabarathi Physically Handicapped, Residential School, 1 <sup>st</sup> Cross, KR Extension, Madhugiri, Tumkur District., Karnataka	01.11.2012
44	Association for Rehabilitation of the Disabled (ARD) Residential School for Mentally Handicapped Childrens Dasanal Villege, Gangavathi, Koppal District - 583227 Karnataka	08.11.2012 & 09.11.2012
45	Sai Ranga Vidhya Samasthe ® Resi School for the Deaf No.764/A, B Layout, Bannimantap, Mysore - 570015, Karnataka	21.03.2013 & 22.03.2013
46	Rangarao Memorial School for the Disabled (Residential School for Visually Impaired Girls) # 1/C, K.R.S. Road, Metagali, Mysore – 570 016, Karnataka	20.03.2013 & 21.03.2013
47	Daughter of our lady of Mercy Deaf and Dumb School Special School for Deaf Old HD Kote Road, Srirampur, NH Palaya P.O. Mysore – 570023, Karnataka	23.03.2013 & 24.03.2013

## Programmes in North East

Sl. No	Name of the State	Name of the programme	Dates of programme	No. of beneficiaries
1	NIMH HQs	Training Programme on Counselling in Rehabilitation for North East Regional Participants – by Dr.G.Srikrishna, Lecturer in Rehab Psychology	29.10.2012 to 02.11.2012	20
2	AGARTALA, TRIPURA	Orientation programme for Media Personnel at DDRC	26.11.12	59
		Orientation programme for Govt officials at DDRC	26.11.12	18
		Orientation programme for CDPOs & Supervisors at DDRC	27.11.12	55
		Orientation programme for Supervisors & Anganwadi workers at DDRC	27.11.12	36
		Orientation programme for medical professional, Govt of Tripura at DDRC	28.11.12	25
		Orientation programme for para medical staff at DDRC	28.11.12	60
		Sensitization programme for diploma and degree students at Tripura Institute of Technology	28.11.12	80
		Orientation programme for SSA teachers at DDRC	29.11.12	55
		Orientation programme for teachers from colleges and university at DDRC	29.11.12	51
		Sensitization programme for 7 <sup>th</sup> standard students – 4 sections at Kendriya Vidyalaya	29.11.12	200
		Orientation programme for regular and SSA teachers at DDRC	30.11.12	67



Sl. No	Name of the State	Name of the programme	Dates of programme	No. of beneficiaries
		Orientation programme for para medical, teachers at DDRC	30.11.12	72
		Sensitization programme for 8 <sup>th</sup> and 9 <sup>th</sup> std students - 5 sections	30.11.12	250
		Sensitization programme for staff and students at Beer Bikram college	30.11.12	120
		Sensitization programme for staff and students of Womens College	30.11.12	150
		Sensitization programme for higher secondary students at Hindi Mahavidyalaya	30.11.12	150
		Orientation programme for faculty, nursing staff, medical students at Tripura Medical College	30.11.12	175
3.	SIKKIM			
	Mangan, Sikkim	Training Programme on disability awareness for school and college students in North Sikkim	3-5 Dec. 2012	5 programmes 250 student beneficiaries
	Namchi, Sikkim	Training Programme on disability awareness for school and college students in South Sikkim	6-8 Dec. 2012	5 programmes 172 student beneficiaries
	Gyalsing, Sikkim	Training Programme on disability awareness for school and college students in South Sikkim	10-12 Dec. 2012	3 programmes 1127 student beneficiaries



Sl. No	Name of the State	Name of the programme	Dates of programme	No. of beneficiaries
	Mangan, North Sikkim District	Causes & prevention of disabilities, Creation of awareness & Prevention, early detection and Early intervention, schemes and benefits, rehabilitation Management services available in India for SW & SE dept staff, employees, ICDS NGOs & Reporters	3.12.2012	119
	Mangan, North Sikkim District	Causes & prevention of disabilities, Creation of awareness & Prevention, early detection and Early intervention, schemes and benefits, rehabilitation Management services available in India for Chairpersons, Goan Pradhans, ICDS	4.12.2012	50
	Mangan, North Sikkim District	Causes & prevention of disabilities, Creation of awareness & Prevention, early detection and Early intervention, schemes and benefits, rehabilitation Management services available in India for Teachers, Govt officials working for disability rehabilitation	5.12.2012	89
	Namchi, South Sikkim District	Causes & prevention of disabilities, Creation of awareness & Prevention, early detection and Early intervention, schemes and benefits, rehabilitation Management services available in India for SW & SE dept staff, employees, ICDS NGOs & Reporters	6.12.2012	99
	Namchi, South Sikkim District	Causes & prevention of disabilities, Creation of awareness & Prevention, early detection and Early intervention, schemes and benefits, rehabilitation Management services available in India for Chairpersons, Goan Pradhans, ICDS	7.12.2012	104



Sl. No	Name of the State	Name of the programme	Dates of programme	No. of beneficiaries
	Namchi, South Sikkim District	Causes & prevention of disabilities, Creation of awareness & Prevention, early detection and Early intervention, schemes and benefits, rehabilitation Management services available in India for Teachers, Govt officials working for disability rehabilitation	8.12.2012	95
	Gesing, West Sikkim District	Causes & prevention of disabilities, Creation of awareness & Prevention, early detection and Early intervention, schemes and benefits, rehabilitation Management services available in India for SW & SE dept staff, employees, ICDS NGOs & Reporters	10.12.2012	80
	Gezing, West Sikkim District	Causes & prevention of disabilities, Creation of awareness & Prevention, early detection and Early intervention, schemes and benefits, rehabilitation Management services available in India for Chairpersons, Goan Pradhans, ICDS	11.12.2012	108
4	Arunachal Pradesh			
	Bomdila, Arunachal Pradesh	Orientation programe for CDPOs and Supervisors at Officers Club, Bomdila	21.1.2013	32
	Bomdila, Arunachal Pradesh	Sensitization programme for students and teachers at Shanti Deva Vidyalaya	21.1.2013	320
	Bomdila, Arunachal Pradesh	Orientation programe for parents and resource teachers at Officers Club, Bomdila	22.1.2013	27
	Bomdila, Arunachal Pradesh	Sensitization programme for students at Govt Higher Secondary school, Bomdila	22.1.2013	100





Sl. No	Name of the State	Name of the programme	Dates of programme	No. of beneficiaries
	Bomdila, Arunachal Pradesh	Orientation programme for teachers at Govt Higher Secondary school, Bomdila	22.1.2013	18
	Bomdila, Arunachal Pradesh	Sensitization programme for students and teachers at Govt Higher Secondary school, Bomdila	22.1.2013	450
	Bomdila, Arunachal Pradesh	Sensitization programme for 12 <sup>th</sup> class students at Officers Club, Bomdila	23.1.2013	54
	Bomdila, Arunachal Pradesh	Sensitization programme for students and teachers at Pine Dale Public School, Kakaling	23.1.2013	140
	Bomdila, Arunachal Pradesh	Orientation programme for anganwadi workers at Officers Club	24.1.2013	45
	Bomdila, Arunachal Pradesh	Sensitization programme for students and teachers at Sonam Academy, Bomdila	24.1.2013	65
	Bomdila, Arunachal Pradesh	Orientation programme for Doctors and Staff nurses at District Hospital, Bomdila	24.1.2013	16
	Bomdila, Arunachal Pradesh	Orientation program for SSA teachers at Officers Club	25.1.2013	25
5	MANIPUR			
	Imphal, Manipur	Awareness programme on MR for media personnel/State govt officials	26.2.2013	70
	Ukhrul, Manipur	Orientation programme on MR for anganwadi workers and other grass root level workers	27.2.2013	207



Sl. No	Name of the State	Name of the programme	Dates of programme	No. of beneficiaries
	Ukhrul, Manipur	Training programme on mental retardation for SSA Teachers, special teachers and regular school teachers	27.2.2013	60
	Ukhrul, Manipur	Awareness programme on mental retardation for high school students	27.2.2013	411
	Ukhrul, Manipur	Training programme on MR for SSA/ Spl.Teachers/Regular school teachers	28.2. 2013	38
	Ukhrul, Manipur	Awareness programme on MR for high school students	28.2.2013	438
	Thoubal, Manipur	Training programme on MR for SSA/ Spl.Teachers/Regular school teachers	1-2 March, 2013	80
	Thoubal, Manipur	Awareness programme on MR for high school students	1.3.2013	70
	Thoubal, Manipur	Parent training programme for parent/ guardias of children with MR	2.3.2013	80
6	MIZORAM			
	Champai, Mizoram	Orientation programme on disability for health officer and health worker of department of health, Govt of Mizoram	25.2.2013	52
	Champai, Mizoram	Orientation programme on disability for parents of children with intellectual disability	26.2.2013	74
	Champai, Mizoram	Orientation programme on disability for officers from education deparment and teachers of SSA	27.2.2013	84
	Champai, Mizoram	Awareness Programme for college students	27.2.2013	165
	Champai, Mizoram	Orientation programme on disability for ICDS officers and staff of social welfare department	28.2.2013	59
	Champai, Mizoram	Awareness programme for students and teachers of resource room	28.2.2013	11

### List of Members of General Council

1. Smt.Stuti Kacker, I.A.S., ..... President  
Secretary to Govt of India and  
President, General Council-NIMH,  
Ministry of Social Justice & Empowerment,  
Shastri Bhavan, New Delhi 110 001.
2. Shri Pankaj Joshi, I.A.S., ..... Member  
Joint Secretary  
Dept of Disability Affairs,  
Government of India ,  
Ministry of Social Justice & Empowerment,  
Shastry Bhavan, New Delhi- 110 001.
3. Shri Rakesh Jain, IA&AS. .... Member  
Joint Secretary & Financial Adviser,  
Ministry of Power,  
Government of India,  
Shram Shakti Bhavan, New Delhi 110 001.
4. Deputy Director General ..... Member  
(Planning Monitoring & Statistics)  
Dept. of Education  
Ministry of Human Resource Development  
Room No.203, C-Wing,  
Shastri Bhavan, New Delhi – 110 001.
5. Joint Secretary (Admn.), ..... Member  
Dept. of Health,  
Ministry of Health & Family Welfare  
Govt. of India. Nirman Bhavan, A-Wing  
4<sup>th</sup> Floor, New Delhi – 110 001.
6. Principal Secretary to Govt. of A.P. .... Member  
Dept. of Medical & Health,  
A.P. Secretariat, 'L' Block, III floor,  
Room No.305, Hyderabad – 500 022.



- |     |   |                        |
|-----|---|------------------------|
| 7.  | Principal Secretary to Govt of A.P.<br>Dept. of Women Development & Child Welfare,<br>A.P. Secretariat, L-Block, Floor -2, Room No-210,<br>Hyderabad – 500 022.   | ..... Member           |
| 8.  | Director General of Employment & Training,<br>Ministry of Labour, Govt. of India,<br>Room No. 111, First Floor,<br>Shram Shakti Bhavan, New Delhi – 110 001.  | ..... Member           |
| 9.  | Shri Anil Kumar Mehra<br>C-5, Motia Khan Double Storey<br>Pahar Ganj, New Delhi.  | ..... Member           |
| 10. | Shri Gaurav Arora<br>X-52, West Patel Nagar<br>New Delhi – 110 008.   | ..... Member           |
| 11. | Mrs. Indumathi Rao<br>Regional Coordinator<br>CBR, Network (South Asia)<br>134, 1 <sup>st</sup> Block, 6 <sup>th</sup> Mainb,<br>3 <sup>rd</sup> Phase, III Stage, BSK, Bangalore – 560 085.  | ..... Member           |
| 12. | Dr. N.C.Pati, General Secretary<br>(Prof. of Psychology, Utkal University, Orissa)<br>Jewels International<br>(Chetana Institute for the Mentally Handicapped)<br>A/3, Institutional Area,<br>Near Hotel Swosti Plaza, PO:RRL Campus<br>Bhubaneswar – 751 013 | ..... Member           |
| 13. | Shri Rajeev Ranjan Kushwaha,<br>C/o. Mr. P.K.Kushwaha,<br>Flat No.101, Wing-1,<br>Rajat Heights, Near Hotel Heavens<br>Manakapur, Shindwara Road,<br>Nagpur, Maharashtra.   | ..... Member           |
| 14. | Shri T.C. Siva Kumar<br>Director<br>National Institute for the Mentally Handicapped,<br>Manovikas Nagar, Secunderabad – 500 009   | ..... Member Secretary |

### List of Members of Executive Council

1. Shri Pankaj Joshi, I.A.S. ... Chairperson  
Chairperson Executive Council, NIMH and  
Joint Secretary  
Department of Disability Affairs  
Ministry of Social Justice & Empowerment,  
Government of India, Shastri Bhavan, New Delhi-110 001
  
2. Shri Ajay Narayan Jha, I.A.S. ... Member  
Joint Secretary & Financial Adviser,  
Government of India,  
Ministry of Social Justice & Empowerment,  
Shastry Bhawan, New Delhi 110 001.
  
3. Shri T.C.Sivakumar ... Member Secretary  
Director,  
National Institute for the Mentally Handicapped  
Secunderabad-500 009

### List of Members of Academic Committee

1. Dr.B.Rajashekar, M.Sc, Ph.D.  
Dean & Professor in Dept of Speech and Hearing  
Manipal College of Allied Health Sciences, Manipal University, Manipal.
2. Dr.Uma, H., M.Phil, Ph.D  
Professor of Clinical Psychology  
Dept of Clinical Psychology  
NIMHANS, Bangalore.
3. Prof. Anilkumar T.V.  
MBBS, DPM, DNB, M.Phil. PDF.  
Associate Professor  
Dept of Psychiatry, Trivandrum Medical College  
Thiruvananthapuram, Kerala.
4. Dr.Radhakrishna, MBBS, D.C.H.,  
Asst. Director  
National Institute of Nutrition, Hyderabad.
5. Dr.A.Jyothi, M.Sc.,Ph.D.  
Director  
Institute of Genetics and Hospital for Genetic Disorders  
Begumpet, Hyderabad.
6. Prof.S.P.K.Jana, M.Phil. Ph.D.  
Associate Professor in Psychology  
University of Delhi, New Delhi.
7. Dr.Neeraj Jain  
M.Sc., Ph.D.  
Prof. & Scientist VI  
National Brain Research Centre  
Haryana.
8. Shri T.C.Sivakumar  
Director,  
National Institute for the Mentally Handicapped,  
Secunderabad-500 009.



## ACTIVITIES AT NIMH HQs



*Rally during International Day for the Disabled*



*Cultural programmes during Special Employees' Meet*



*Celebration of Religious Festival  
by Special Education Centre students*



*Celebration of Religious Festival  
by Special Education Centre students*



*NIMH official discussing with District officials of Buldhan District*



*Economic rehabilitation of PwD in the community*



*Dr. B.R. Ambedkar birthday celebration at NIMH*



*Visit of Joint Secretary, MSJ&E,GOI to Special Education Centre, NIMH*





*Celebrating the success during Republic Day Parade by SEC and DAIL students*



*Visit by Dr. Lea*



*Presentation of Tableau by NIMH during Independence Day Celebration of Govt. of A.P.*



*Celebrating World Autism Day*



## ACTIVITIES AT REGIONAL CENTRE, NEW DELHI



Inauguration of 1st bath of B.ED. SE (MR) at NIMH RC New Delhi - Chaired by Dr. J.P. Singh, former Member Secretary, RCI



STP on Development and use of TLM



NIMH-MSEC: Rally of Staff & Students to Sensitize Public



STP on Learning Disability



Parent Training Programme



## ACTIVITIES AT REGIONAL CENTRE, NAVI MUMBAI



*Annual Day Celebrations*



*Participants of Certificate course*



*Music, Dance & Drama workshop for Long term course*



*Christmas celebrations*



*Participants of Regional Parents Meet*



*Assessment camp*



## ACTIVITIES AT REGIONAL CENTRE, KOLKATA



Participants of Short Term Programme



Classes in progress



Awareness programme at Bankura, WB



Orientation programme during distribution of EIS kit



Distribution of NIMH publications during Indian Science Congress Pride - Expo-2013



Orientation on Inclusive Education



## ACTIVITIES AT NIMH MODEL SPECIAL EDUCATION CENTRE



*NIMH MSEC students learning to use the escalator at the Metro Station*



*NIMH MSEC : Exhibition in Central Market, Lajpat Nagar on the occasion of International Day for Disabled*



*NIMH MSEC: Training Programme on "Work Behaviour in Adults with Mental Retardation"*



*NIMH MSEC art & Craft activity*



*Solo performance by Sahil during Annual Day Celebrations*



Back Cover Page : The administrative and Faculty Block of NIMH, HQ  
Above : Early Intervention under progress

మానసిక వికలాంగుల్లో ఆత్మస్థైర్యాన్ని పెంచాలి: ప్రతాప్

శ్రీమద్వైది డిసెంబరు 3 ప్రధానాధ్యక్షుడు మానసిక వికలాంగుల్లో ఆత్మస్థైర్యాన్ని పెంచాలి అంటూ ప్రతాప్ పిలువగా...



మనోహర్ కుమార్ కుమార్ మానసిక వికలాంగులను ప్రోత్సహించే ప్రయత్నం చేస్తున్నారని ప్రతాప్ అన్నారు.

కలకత్తాలోని మానసిక వికలాంగులకు చేయూతనిస్తాం



11వ పుస్తక పాఠశాల ఆధ్వర్యంలో పాఠశాల ప్రారంభం

వికలాంగులకు చేయూతనిస్తాం



వికలాంగులకు చేయూతనిస్తాం

వికలాంగులకు చేయూతనిస్తాం

మానసిక వికలాంగులను ప్రోత్సహించాలి

మానసిక వికలాంగులను ప్రోత్సహించాలి



మానసిక వికలాంగులను ప్రోత్సహించాలి

మానసిక వికలాంగులను ప్రోత్సహించాలి



## राष्ट्रीय मानसिक विकलांग संस्थान

(निःशक्तजन कार्य विभाग, सामाजिक न्याय और अधिकारिता मंत्रालय, भारत सरकार)

(आई.एस.ओ. 9001:2008 संस्थान)

मनोविकास नगर, सिकन्दराबाद - 500 009, आंध्र प्रदेश, भारत

फोन : 040-27751741-745 फैक्स : 040-27750198

ई-मेल : [nimh.director@gmail.com](mailto:nimh.director@gmail.com)

वेबसाइट : [www.nimhindia.org](http://www.nimhindia.org); [www.nimhindia.gov.in](http://www.nimhindia.gov.in)

### **National Institute for the Mentally Handicapped**

(Department of Disability Affairs,  
Ministry of Social Justice & Empowerment, Government of India)  
(An ISO 9001:2008 Institution)

Manovikasnagar, Secunderabad -500 009,  
Andhra Pradesh, INDIA.

Phone : 040-27751741- 745 Fax: 040-27750198

E-mail : [nimh.director@gmail.com](mailto:nimh.director@gmail.com)

Website : [www.nimhindia.org](http://www.nimhindia.org); [www.nimhindia.gov.in](http://www.nimhindia.gov.in)