

GROSS FIXED CAPITAL FORMATION IN THE PUBLIC SECTOR OF UTTARAKHAND

[Year: 2009-10 and 2010-11]



Government Of Uttarakhand

*Directorate of Economics & Statistics
Department of Planning
Government of Uttarakhand
100/6, Neshvilla Road, Dehradun
Uttarakhand - 248001*

डॉ० इन्दिरा हृदयेश

मंत्री

वित्त, वाणिज्य कर, औद्योगिक विकास,
नियोजन, उच्च शिक्षा,
विधायी एवं संसदीय कार्य



उत्तराखण्ड सरकार

विधान भवन,

देहरादून-248001

दूरभाष : (0135) 2665088 (कार्यालय)
(0135) 2665988 (फैक्स)
(0135) 2748200 (आवास)



MESSAGE

I am pleased to note that DES Uttarakhand is able to publish Gross Fixed Capital Formation in the Public sector of Uttarakhand [Year: 2009-10 and 2010-11] under the guidance of Central Statistical Office (CSO), Government of India.

GFCF estimates provide an important indicator in measuring the growth of productive potential of State's Economy. It is an important prerequisite for formulation of future development programmes.

I would like to congratulate the team of DES officials for putting up their strenuous efforts to bring out this publication for the first time in the State.

I hope that data incorporated in this publication would help policy makers and development administrators to consider suitable policy changes.


(Indira Hridayesh)

निवास : 17-ए. न्यू कैंप रोड, देहरादून - 248 001

Acknowledgement

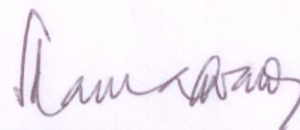
I am happy to take note that limited number of officials in the State Income Unit of the Directorate of Economics & Statistics (DES) have prepared another valuable publication titled ' Gross Fixed Capital Formation in the Public Sector of Uttarakhand [Year : 2009-10 and 2010-11]'. It is obviously another noteworthy contribution from them that will help planners, policy makers and economic analysts in studying and analyzing the Capital Formation in the Public Sector of the State of Uttarakhand.

I would like to place on record my appreciation for the GSDP cell of DES who has meticulously contributed in preparing this document. Their efforts are duly acknowledged.

Enlightened readers are requested to kindly communicate their comments and suggestions, which will help DES to cater to the specific needs of planning and research.

Date : 25/02/15

Place: Dehradun



(S Ramaswamy)

Principal Secretary (Planning)
Government of Uttarakhand

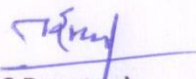
Foreword

It gives me immense pleasure in taking note that a small team of DES officials have initiated estimating Gross Fixed Capital Formation (GFCF) in the Public Sector of the state. Their efforts in this direction are duly acknowledged and appreciated as they have added another valuable publication titled 'Gross Fixed Capital Formation in the Public Sector of Uttarakhand [Year: 2009-10 and 2010-11]'.

The DES-Uttarakhand has used mainly the methodology provided by the CSO and guidelines sketched by research teams of the Department of Economic and Statistical Analysis (DESA) – Haryana and the Economic and Statistical Organisation (ESO) – Punjab. DES-Uttarakhand is indeed indebted to DESA-Haryana and ESO-Punjab for their kind help, support and guidance in the form of capacity building of our team-members.

I would like to make sincere appeal to our honourable readers to kindly provide their valuable comments and suggestions, and also to point out errors and omissions, if any.

Date : 2-2-2015
Place: Dehradun


(Y S Pangtey)
Director, DES
Government of Uttarakhand

Research & Report Preparing Team:

Shri Pankaj Naithani, Joint Director

Shri Tilok singh Anna, Economics & Statistics Officer

Shri Rajesh Kumar, Additional Statistical Officer

Shri Shashi Kant Giri, Additional Statistical Officer

Shri Bharat Singh Rawat, Additional Statistical Officer

Dr Bharti Jaiswal, Assistant Statistical Officer

Web Information Manager: Shri Pankaj Naithani, Joint Director

Asstt. Web Information Manager: Shri GS Pandey, Programmer

Contents

Title	Page No.
1. Introduction	01-02
2. About GFCF and Its Classification	03-07
3. Methodology and Data Sources	08-11
4. Analysis of GFCF in Public Sector	12-14
<i>Statistical Tables</i>	15-37
<i>Annexure</i>	38

1 Introduction

- 1.1 The Gross Fixed Capital Formation (GFCF) estimates of a region (e.g., nation state and others) provide an assessment of addition to capital base of its economy, and express change in the mode and capacity of production. These estimates, along with other development statistics, are required for making policy decisions related to resource mobilisation, allocation and assessing the plausible impact on the economy.
- 1.2 At national level, The Central Statistical Office (CSO) prepares estimates of GFCF and publishes them annually in the National Accounts Statistics (NAS). However, the Government of India, way back in 1972, set up a Committee on Regional Accounts, which produced its final report in 1976 and detailed the concept, scope and coverage of GFCF in the context of its estimation at the state level. It also gave a broad outline of the methodology of estimating the GFCF following the expenditure approach.
- 1.3 The sub-groups on State Gross Domestic Product and Expenditure Accounts (1984), set up by the CSO, in its report *inter-alia* provided methodological notes on “Scope, Coverage and Method of Estimation of Fixed Capital Formation at State Level”. The report approved by the Advisory Committee was forwarded to the Directorates of Economics & Statistics (DESs) of states in July 1986. However, all this has happened before the inception of Uttarakhand as a separate state.
- 1.4 In the light of various recommendations and guidance received from the CSO through Regional Workshops on State Income Aggregates, the DES-Uttarakhand has made an attempt for estimating the GFCF in

the Public Sector. This, therefore, is the first publication on the GFCF that presents estimates pertaining to various institutions in the public sector. GFCF estimates are prepared for the year 2009-10 and 2010-11 by the *Type of Assets* and the *Industry of Use*. The scope of the report is limited to this extent.

- 1.5 While working out the estimates presented in this document, DES has tried to follow and stick to the latest methodological approaches suggested by the CSO. However, there are few deviations as well for DES has also learnt from practices and experiences of various states, especially Haryana and Punjab.

2 About GFCF and Its Classification

2.1 **Definition:** The United Nations Statistics Division (UNSD) has defined the Domestic Capital Formation as “that part of country’s current output and imports which are not consumed or exported during the accounting period but are set aside as addition to its stock of capital goods” i.e. all goods produced for use in future productive process, such as:

2.1.1 Building and other construction works,

2.1.2 Plant, machinery and other equipments,

2.1.3 stock of raw materials, semi-finished and finished goods

2.2 However, at state level Gross Capital Formation (GCF) is difficult to calculate due to issues related to figures of 'change in stock'. Thus, at state level GFCF can be attempted. The GFCF consists of the outlays of the industries and the producers of government services and private non-profit services to house-holds in addition to their fixed assets, reduced by their net sales - sales less purchases - of similar second hand and scrapped goods. The outlays on durable goods like: land mineral deposits, timber tracts and similar others are not included for the purposes of estimation of GFCF. Also excluded are construction work and durable goods, which are meant primarily for military purposes.

2.3 As per UN System of National Accounting (SNA):

GFCF = Total Value of a producer’s acquisition of fixed assets - disposals of fixed assets + certain addition to the value of non-produced assets

2.4 Classification by Types of Assets: The estimates of the GFCF are classified as per following types of assets: -

2.4.1 Buildings: Buildings include residential and non-residential structures. Non-residential buildings include those structures that are entirely or primarily used for industrial and commercial purpose e.g., industrial buildings, office buildings, farm buildings, hotels and similar others. All expenditures on new constructions and major alternations to residential and non-residential buildings - including all costs of permanent fixtures - are treated as capital expenditure.

2.4.2 Roads & Bridges: Expenditure on new construction and major alterations of roads & bridges and drain under a road are included under this head.

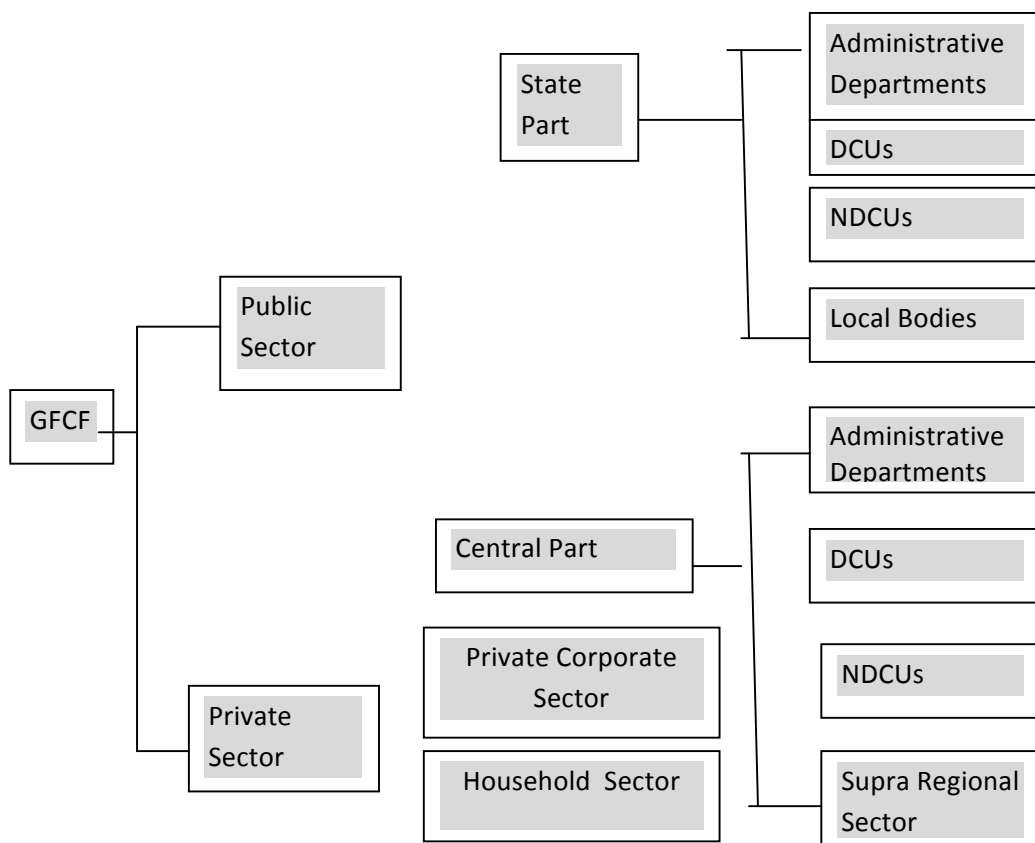
2.4.3 Other Construction: It includes construction and maintenance expenditure on sewers, parking facilities, pipelines, electricity transmission lines, telephone and telegraph lines, dams, spillways, drainage works, irrigation works, afforestation, land reclamation, plantation that take more than half a year to become productive, and similar others.

2.4.4 Machinery & Equipment: This item covers all expenditures incurred on acquisition of new power generating machinery, agriculture machinery, tools and implements used in departmental and non-departmental enterprises. Expenditures on an office machinery & equipment and instruments are also covered under this item. Expenditures incurred on major alterations and improvements in above category of machinery and equipment are also included.

2.4.5 *Transport Equipment*: It includes expenditure on transport equipments, motorcar, trucks, commercial vehicles and similar others and outlays on major alteration and improvements in existing transport equipments.

2.5 **Classification by Type of Institutions**: Under this type of classification of GFCF, public and private sectors are considered separately. Public sector is further classified as State and Central Government. It is shown in Figure-A below:-

Figure-A: GFCF Classification by Types of Institutions



- 2.5.1 Administrative Departments: Administrative departments of the state and central governments comprise of government departments and their offices, whose function is to organise services for the community but not normally to sell those common services, which otherwise cannot be provided economically.
- 2.5.2 Departmental Commercial Undertakings (DCUs): The DCUs are incorporated enterprises owned, controlled and run directly by the public authorities. These enterprises normally do not hold or manage financial assets and liabilities apart from their working balances and business accounts payables & receivables. These enterprises charge for the goods and services they provide on commercial basis. The well-known enterprise covered under this category is Railways.
- 2.5.3 Non-Departmental Commercial Undertakings (NDCUs): The NDCUs are those which produce goods and services for sales and similar purposes. They are government companies in which the state/central government holds not less than 51% of the paid-up share capital, and are statutory corporations set up under special enactments of parliament or legislatures.
- 2.5.4 Local Bodies: Local Bodies consist of *Gram Panchyats, Nagar Panchyats, Nagar Palika Parishads, Nagar Nigams and Cantonment Boards.*
- 2.5.5 Supra Regional Sector: There are number of sectors e.g. railways, communication and banking & insurance those constitute supra-regional sectors as data pertaining to them is not available at the state level. The CSO, thus, collects their data at the centre and after bifurcating it based on suitable indicators prepares state-wise figures of various income aggregates.

2.6 Industry of Use: Various types of 'Industry of Use' considered for preparation of the estimates of GFCF in this publication are shown in Figure-B below:

Figure-B: *Industry of Use*

<p>Agriculture and Allied Activities</p> <ul style="list-style-type: none"> • Agriculture • Animal Husbandry • Forestry & Logging • Fishing 	<p>Mining & Quarrying</p>	<p>Manufacturing</p> <ul style="list-style-type: none"> • Registered • Unregistered
<p>Electricity, Gas & Water Supply</p>	<p>Construction</p>	<p>Trade, Hotels & Restaurants</p> <ul style="list-style-type: none"> • Trade • Hotels & Restaurants
<p>Transport, Storage & Communication</p> <ul style="list-style-type: none"> • Railways • Transport by other means • Storage • Communication 	<p>Banking, Insurance & Business Services</p> <ul style="list-style-type: none"> • Banking & Insurance • Business Services 	<p>Community, Social & Financial Services</p> <ul style="list-style-type: none"> • Public Administration • Other Services

3 Methodology And Data Source

3.1 As discussed in Chapter-2, GFCF in Public Sector is calculated in two parts - State Part and Central Part (Ref. Fig-1). Brief details of methodology adopted and data sources for preparing estimates of GFCF for each type of institutions is as follows:

3.1.1 **State Government:** While classifying GFCF estimates into type of asset and type of industry, the DES-Uttarakhand has used methodology provided by the CSO and guidelines sketched by research teams of the Department of Economic and Statistical Analysis (DESA) - Haryana and the Economic and Statistical Organisation (ESO) - Punjab. However, broader methodology adopted and sources of data for preparing type of institution-wise GFCF are as follows:

- (a) Administrative Departments: The data relating to capital expenditure in respect of administrative departments have been culled-out from budget documents of the state. They have been classified into type of asset and industry of use. The data generated by the CSO while performing budget analysis (asset-wise and industry of use-wise) of the state for the purpose of state income estimation have been taken as final and adjusted accordingly.
- (b) DCUs: Data culled-out from budget documents of the state have been classified into type of asset and industry of use. The data generated by the CSO while performing budget analysis (asset-wise and industry of use-wise) of the state for the purpose of state income estimation have been taken as final and adjusted accordingly.
- (c) NDCUs: There are 9 NDCUs in the state. Their Balance Sheets have been analysed for preparing asset-wise and industry of use-wise estimates of GFCF.

(d) Local Bodies: Data related to local bodies is readily available as DES-Uttarakhand is collecting their income-expenditure statements annually. These statements are analysed for preparing asset-wise and industry of use-wise estimates of GFCF.

3.1.2 **Central Government**: Consolidated figures of GFCF in various institutions provided by the CSO have been bifurcated for type of asset and industry of use utilising appropriate ratios for each of the institution. However, DES-Uttarakhand prepared a detailed list of central organisations (institutions) working in the state and analysed their nature and activities in order to categorise them for producing assets in specific industry of use. The type of institution-wise methodology adopted is as follows:

- (a) Administrative Departments: A consolidated figure of total GFCF in central Administrative Departments in the state provided by the CSO has been bifurcated into industry of use applying state-level ratios as obtained from the corresponding estimates of GFCF in state Administrative Departments. However, bifurcation into types of asset has been done applying national-level ratios as obtained from NAS- 2012.
- (b) DCUs: A consolidated figure of total GFCF in central DCUs in the state provided by the CSO has been bifurcated into industry of use applying state-level ratios as obtained from the corresponding estimates of GFCF in state DCUs. However, bifurcation into types of asset has been done applying national-level ratios as obtained from NAS-2012.
- (c) NDCUs: A consolidated figure of total GFCF in central NDCUs in Uttarakhand has been provided by the CSO. It has been bifurcated into industry of use and types of asset by applying national ratios as obtained from NAS-2012.

(d) *Supra Regional Sector*: A consolidated estimates of GFCF in Supra Regional Sectors i.e. railways, communication, and banking & insurance have been provided by the CSO. Asset-wise estimates of GFCF in these industries have been bifurcated on the basis of national-level ratios as obtained from NAS-2012.

3.2 Various data sources and methodology used for preparing the estimates of GFCF in Public Sector is summarised in Table-A below:

Table-A: *Sources and Method of Estimating GFCF in the Public Sector*

Institution (1)	Source of Data (2)	Methodology (3)
<u>Administrative Departments and DCUs</u>	DES-Uttarakhand for State Part and CSO for Central Part	Analysis of Budget documents of respective governments is done to prepare asset-wise and industry of use-wise estimates of the GFCF. However, asset-wise and industry of use-wise classifications for central DCUs have been done based on ratios for state DCUs and national DCUs respectively.
• State Government	Economic-cum-Purpose Classification of state government Budget	
• Central Government	CSO	
<u>Local Bodies</u>	Income-Expenditure Statements of Local Bodies collected by the DES-Uttarakhand annually	The GFCF estimates are arrived analysing the Income-Expenditure Accounts of the Local Bodies. The analysis has been focused for asset-wise and industry of use-wise classification of estimates.
• Gram Panchyats		
• Nagar Panchyats		
• Nagar Palika Parishads		
• Nagar Nigams		
• Cantonment Boards		
<u>NDCUs</u>	Balance Sheets of respective NDCUs	Analysis of Balance Sheets and Financial Statement of various state NDCUs is done for preparing asset-wise and industry of use-wise estimates of GFCF. However, asset-wise and industry of use-wise classifications for central NDCUs have been done based on national level ratios.
• State	Balance Sheets of NDCUs	
• Centre	CSO	
<u>Supra Regional Sectors</u>	CSO	Asset-wise estimates of GFCF of these industries are obtained applying national-level ratios.

3.3 Limitations: There are, of course, certain data gaps that have forced the DES to limit estimation of GFCF pertaining to public sector only. Scarcity of data related to private sector is very huge that is yet to be filled through benchmark surveys. The task is mammoth and DES would be able to proceed in this direction after attaining more knowledge on the subject. Further, even estimates of GFCF pertaining to the public sector prepared using data from above said sources and methods also indicate clearly that asset-wise and industry of use-wise estimates for central part of various institutions are calculated applying most suitable ratios. It would have been more appropriate had CSO provided institutional GFCF for types of asset and industry of use.

4 Analysis of GFCF in Public Sector

4.1 The GFCF in Public Sector can be analysed sighting it specifically from three angles – (i) Institution-wise (ii) Asset-wise and (iii) Industry of Use-wise. Further, as this report gives GFCF estimates for 2009-10 and 2010-11, a comparative analysis of yearly figures of GFCF vis-a-vis Gross State Domestic Product (GSDP) is equally possible.

4.2 **Institution-wise Analysis of GFCF:** Overall contribution of state part and central part in the GFCF for both the years i.e. 2009-10 and 2010-11 is in the range of 40-42% and 58-60% respectively. However, within state part, maximum contribution has come from ‘Administrative Departments’, which is nearly 50-55%. In case of central part, maximum contribution has come from ‘Supra Regional Sector’, which is around 76-77%. It is noteworthy that at consolidated-level nearly 45% contribution in institutional GFCF has come from ‘Supra Regional Sector’. The details are shown in Table-B.

Table-B: *Institution-wise Estimates of the GFCF*

Sl. No.	Institution	GFCF (in lakh INR)	
(1)	(2)	(3)	(4)
1	<i>State Government</i>	281450	352520
	• Administrative Departments	138209	195411
	• DCUs	32207	41663
	• NDCUs	60324	62066
	• Local Bodies	50710	53380
2	<i>Central Government</i>	413566	489022
	• Administrative Department	72303	91697
	• DCUs	2899	3600
	• NDCUs	24191	16717
	• Supra Regional Sector	314173	377008
All Institutions (Total GFCF)		695016	841542

4.3 Asset-wise Analysis of GFCF: Highest GFCF has been observed for 'Machinery & Equipment' for both the years i.e. 2009-10 and 2010-11. In percentage contribution terms, it has contributed about 33%. It is followed by 'Other Construction' with around 29% contribution; 'Road & Bridges' with 23% 'Buildings' with 12% 'Transport Equipment' with 3%. There is not much difference in asset-wise percentage contribution reported between the years i.e. it is observed almost similar. The details are shown in Table-C.

Table-C : *Asset-wise Estimates of the GFCF*

Sl.No.	Type of Asset	GFCF (in Lakh INR)	
		2009-10	2010-11
(1)	(2)	(3)	(4)
1	Buildings(Bo)	80363	108193
2	Road & Bridges (Ro)	161462	193872
3	Other Construction (Co)	206609	238096
4	Machinery & Equipment (Mo)	225078	275508
5	Transport Equipment (Tro)	21504	25873
All Assets (Total GFCF)		695016	841542

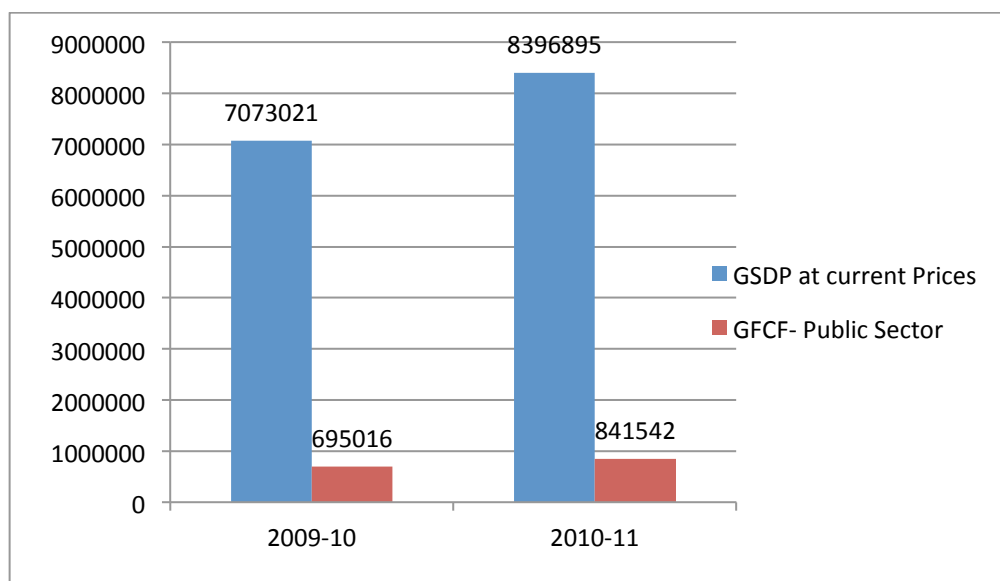
4.4 Industry of Use-wise Analysis of GFCF: Highest GFCF has been observed for the 'Electricity , Gas & Water Supply' for both the years i.e. 2009-10 and 2010-11. In percentage contribution terms, it has contributed about 29%. It is followed by 'community, social & personal services' with 21% in the year 2009-10 and by 'Construction' with 27% in the year 2010-11. The diminishing percentage share of 'Manufacturing', from nearly 11% in 2009-10 to merely 1% in 2010-11, is quite noticeable. Barring the sectors already mentioned, percentage contribution of remaining industries has fluctuated between 1-2% during these two years. The details are shown in table –D.

Table-D: *Industry of Use-wise Estimates of the GFCF*

Sl. No.	Industry of Use	GFCF (in lakh INR)	
		2009-10	2010-11
(1)	(2)	(3)	(4)
1	Agriculture (Including Animal husbandry, Forestry & Logging and Fishing)	57423	61077
2	Mining & Quarrying	46661	72196
3	Manufacturing	73940	7965
4	Electricity, Gas & water supply	200069	250556
5	Construction	74278	222868
6	Trade, Hotels & Restaurants	5081	12239
7	Transport, Storage & Communication	78132	80357
8	Banking, Insurance & Business Services	13161	24723
9	Community, Social & Personal Services	146271	109561
All Industries of Use (Total GFCF)		695016	841542

4.5 GFCF vis-a-vis GSDP: Figures of the GFCF in Public Sector and the GSDP (Current Prices) are compared, and it is found that in both the years GFCF is merely 10% of the GSDP. Between 2009-10 and 2010-11, the growth ratio of GFCF to the GSDP is calculated as 1:9. Important figures are shown in Figure-C.

Figure – C: *GSDP(Current Prices) and GFCF in Public Sector in Lakh INR*



STATISTICAL TABLES

Table-1: GFCF (State Part) in Public Sector by Type of Asset & Industry of Use [Institution: Administrative Departments]

Year - 2009-10

(Figures are in Lakh INR)

SI No.	Industry of Use	Type of Asset					GFCF
		Building	Road & Bridges	Other Construction	Machinery & Equipment	Transport Equipment	
1	2	3	4	5	6	7	8
1	Agriculture & Allied activities(1.1 to 1.4)	9983	737	757	334	183	11994
1.1	Agriculture	1207	0	426	148	142	1923
1.2	Animal Husbandry	8060	0	0	186	41	8287
1.3	Forestry & Logging	716	737	331	0	0	1784
1.4	Fishing	0	0	0	0	0	0
2	Mining & Quarrying	0	0	0	4	10	14
Primary Sector (1+2)		9983	737	757	338	193	12008
3	Manufacturing(3.1 & 3.2)	155	0	6	1313	604	2078
3.1	Registered	155	0	6	1313	604	2078
3.2	Unregistered	0	0	0	0	0	0
4	Electricity, Gas & Water Supply	6727	0	2	1248	10	7987
5	Construction	4457	0	751	461	15	5684
Secondary Sector(3+4+5)		11339	0	759	3022	629	15749
6	Trade Hotel & Restaurants(6.1 & 6.2)	1028	798	718	2	0	2546
6.1	Trade	1028	0	0	2	0	1030
6.2	Hotel & Restaurants	0	798	718	0	0	1516
7	Transport, Storage & Communication(7.1 to 7.4)	2666	3766	3863	16	0	10311
7.1	Railway	0	0	0	0	0	0
7.2	Transport by Other Means	2666	3766	3863	16	0	10311
7.3	Storage	0	0	0	0	0	0
7.4	Communication	0	0	0	0	0	0
8	Banking , Insurance & Business Services(8.1 & 8.2)	27	0	0	10	55	92
8.1	Banking & Insurance	27	0	0	10	55	92
8.2	Business services	0	0	0	0	0	0
9	Community , Social & Personal services(9.1 & 9.2)	6048	85496	5494	465	0	97503
9.1	Public Administration	4365	79113	4980	399	0	88857
9.2	Other Services	1683	6383	514	66	0	8646
Tertiary Sector(6+7+8+9)		9769	90060	10075	493	55	110452
Gross Fixed Capital Formation(GFCF)		31091	90797	11591	3853	877	138209

Table-2: GFCF (State Part) in Public Sector by Type of Asset & Industry of Use [Institution: DCUs]

Year - 2009-10

(Figures are in Lakh INR)

SI No.	Industry of Use	Type of Asset					GFCF
		Building	Road & Bridges	Other Construction	Machinery & Equipment	Transport Equipment	
1	2	3	4	5	6	7	8
1	Agriculture & Allied activities(1.1 to 1.4)	1371	0	30141	330	135	31977
1.1	Agriculture	1169	0	26378	16	18	27581
1.2	Animal Husbandry	0	0	0	0	0	0
1.3	Forestry & Logging	202	0	3763	314	117	4396
1.4	Fishing	0	0	0	0	0	0
2	Mining & Quarrying	0	0	0	0	0	0
Primary Sector (1+2)		1371	0	30141	330	135	31977
3	Manufacturing(3.1 & 3.2)	2	0	0	22	0	24
3.1	Registered	2	0	0	22	0	24
3.2	Unregistered	0	0	0	0	0	0
4	Electricity, Gas & Water Supply	0	0	0	0	0	0
5	Construction	0	0	0	0	0	0
Secondary Sector(3+4+5)		2	0	0	22	0	24
6	Trade Hotel & Restaurants(6.1 & 6.2)	0	0	0	0	0	0
6.1	Trade	0	0	0	0	0	0
6.2	Hotel & Restaurants	0	0	0	0	0	0
7	Transport, Storage & Communication(7.1 to 7.4)	0	206	0	0	0	206
7.1	Railway	0	0	0	0	0	0
7.2	Transport by Other Means	0	206	0	0	0	206
7.3	Storage	0	0	0	0	0	0
7.4	Communication	0	0	0	0	0	0
8	Banking , Insurance & Business Services(8.1 & 8.2)	0	0	0	0	0	0
8.1	Banking & Insurance	0	0	0	0	0	0
8.2	Business services	0	0	0	0	0	0
9	Community , Social & Personal services(9.1 & 9.2)	0	0	0	0	0	0
9.1	Public Administration	0	0	0	0	0	0
9.2	Other Services	0	0	0	0	0	0
Tertiary Sector(6+7+8+9)		0	206	0	0	0	206
Gross Fixed Capital Formation(GFCF)		1373	206	30141	352	135	32207

Table-3: GFCF (State Part) in Public Sector by Type of Asset & Industry of Use [Institution: NDCUs]

Year - 2009-10

(Figures are in Lakh INR)

SI No.	Industry of Use	Type of Asset					GFCF
		Building	Road & Bridges	Other Construction	Machinery & Equipment	Transport Equipment	
1	2	3	4	5	6	7	8
1	Agriculture & Allied activities(1.1 to 1.4)	63	0	38	2497	13	2611
1.1	Agriculture	22	0	0	2442	13	2478
1.2	Animal Husbandry	0	0	0	0	0	0
1.3	Forestry & Logging	41	0	38	54	0	134
1.4	Fishing	0	0	0	0	0	0
2	Mining & Quarrying	0	0	0	0	0	0
Primary Sector (1+2)		63	0	38	2497	13	2611
3	Manufacturing(3.1 & 3.2)	0	0	0	0	0	0
3.1	Registered	0	0	0	0	0	0
3.2	Unregistered	0	0	0	0	0	0
4	Electricity, Gas & Water Supply	626	0	16162	31726	96	48610
5	Construction	0	0	0	0	0	0
Secondary Sector(3+4+5)		626	0	16162	31726	96	48610
6	Trade Hotel & Restaurants(6.1 & 6.2)	0	0	0	52	42	94
6.1	Trade	0	0	0	52	42	94
6.2	Hotel & Restaurants	0	0	0	0	0	0
7	Transport, Storage & Communication(7.1 to 7.4)	0	0	0	95	-700	-605
7.1	Railway	0	0	0	0	0	0
7.2	Transport by Other Means	0	0	0	94	-700	-607
7.3	Storage	0	0	0	0	0	0
7.4	Communication	0	0	0	1	0	1
8	Banking , Insurance & Business Services(8.1 & 8.2)	0	0	0	0	0	0
8.1	Banking & Insurance	0	0	0	0	0	0
8.2	Business services	0	0	0	0	0	0
9	Community , Social & Personal services(9.1 & 9.2)	0	0	0	0	0	0
9.1	Public Administration	0	0	0	0	0	0
9.2	Other Services	0	0	0	0	0	0
Tertiary Sector(6+7+8+9)		0	0	0	147	-659	-512
Gross Fixed Capital Formation(GFCF)		689	0	16201	34369	-549	50710

Table-4: GFCF (State Part) in Public Sector by Type of Asset & Industry of Use [Institution: Local Bodies]

Year - 2009-10

(Figures are in Lakh INR)

SI No.	Industry of Use	Type of Asset					GFCF
		Building	Road & Bridges	Other Construction	Machinery & Equipment	Transport Equipment	
1	2	3	4	5	6	7	8
1	Agriculture & Allied activities(1.1 to 1.4)	0	0	40	0	0	40
1.1	Agriculture	0	0	40	0	0	40
1.2	Animal Husbandry	0	0	0	0	0	0
1.3	Forestry & Logging	0	0	0	0	0	0
1.4	Fishing	0	0	0	0	0	0
2	Mining & Quarrying	0	0	0	0	0	0
Primary Sector (1+2)		0	0	40	0	0	40
3	Manufacturing(3.1 & 3.2)	0	0	0	0	0	0
3.1	Registered	0	0	0	0	0	0
3.2	Unregistered	0	0	0	0	0	0
4	Electricity, Gas & Water Supply	0	0	3785	0	0	3785
5	Construction	0	45067	0	0	0	45067
Secondary Sector(3+4+5)		0	45067	3785	0	0	48852
6	Trade Hotel & Restaurants(6.1 & 6.2)	0	0	0	0	0	0
6.1	Trade	0	0	0	0	0	0
6.2	Hotel & Restaurants	0	0	0	0	0	0
7	Transport, Storage & Communication(7.1 to 7.4)	0	0	0	0	0	0
7.1	Railway	0	0	0	0	0	0
7.2	Transport by Other Means	0	0	0	0	0	0
7.3	Storage	0	0	0	0	0	0
7.4	Communication	0	0	0	0	0	0
8	Banking , Insurance & Business Services(8.1 & 8.2)	0	0	0	0	0	0
8.1	Banking & Insurance	0	0	0	0	0	0
8.2	Business services	0	0	0	0	0	0
9	Community , Social & Personal services(9.1 & 9.2)	6122	0	4756	360	194	11432
9.1	Public Administration	0	0	0	0	0	0
9.2	Other Services	6122	0	4756	360	194	11432
Tertiary Sector(6+7+8+9)		6122	0	4756	360	194	11432
Gross Fixed Capital Formation(GFCF)		6122	45067	8581	360	194	60324

Table-5: GFCF (State Part) in Public Sector by Type of Asset & Industry of Use [Institution:All Insitutions]

Year - 2009-10

(Figures are in Lakh INR)

SI No.	Industry of Use	Type of Asset					GFCF
		Building	Road & Bridges	Other Construction	Machinery & Equipment	Transport Equipment	
1	2	3	4	5	6	7	8
1	Agriculture & Allied activities(1.1 to 1.4)	11417	737	30976	3161	331	46622
1.1	Agriculture	2398	0	26844	2606	173	32022
1.2	Animal Husbandry	8060	0	0	186	41	8287
1.3	Forestry & Logging	959	737	4132	368	117	6314
1.4	Fishing	0	0	0	0	0	0
2	Mining & Quarrying	0	0	0	4	10	14
Primary Sector (1+2)		11417	737	30976	3165	341	46636
3	Manufacturing(3.1 & 3.2)	157	0	6	1335	604	2102
3.1	Registered	157	0	6	1335	604	2102
3.2	Unregistered	0	0	0	0	0	0
4	Electricity, Gas & Water Supply	7353	0	19949	32974	106	60382
5	Construction	4457	45067	751	461	15	50751
Secondary Sector(3+4+5)		11967	45067	20706	34770	725	113235
6	Trade Hotel & Restaurants(6.1 & 6.2)	1028	798	718	54	42	2640
6.1	Trade	1028	0	0	54	42	1124
6.2	Hotel & Restaurants	0	798	718	0	0	1516
7	Transport, Storage & Communication(7.1 to 7.4)	2666	3972	3863	111	-700	9912
7.1	Railway	0	0	0	0	0	0
7.2	Transport by Other Means	2666	3972	3863	110	-700	9910
7.3	Storage	0	0	0	0	0	0
7.4	Communication	0	0	0	1	0	1
8	Banking , Insurance & Business Services(8.1 & 8.2)	27	0	0	10	55	92
8.1	Banking & Insurance	27	0	0	10	55	92
8.2	Business services	0	0	0		0	0
9	Community , Social & Personal services(9.1 & 9.2)	12170	85496	10250	825	194	108935
9.1	Public Administration	4365	79113	4980	399	0	88857
9.2	Other Services	7805	6383	5270	426	194	20078
Tertiary Sector(6+7+8+9)		15891	90266	14831	1000	-410	121578
Gross Fixed Capital Formation(GFCF)		39275	136070	66514	38934	657	281450

Table-6: GFCF (Central Part) in Public Sector by Type of Asset & Industry of Use [Institution: Administrative Departments]

Year -2009-10

(Figures are in Lakh INR)

Sl No.	Industry of Use	Type of Asset					GFCF
		Building	Road & Bridges	Other Construction	Machinery & Equipment	Transport Equipment	
1	2	3	4	5	6	7	8
1	Agriculture & Allied activities(1.1 to 1.4)	5465	197	1427	558	563	8210
1.1	Agriculture	661	0	803	248	438	2150
1.2	Animal Husbandry	4412	0	0	310	125	4847
1.3	Forestry & Logging	392	197	624	0	0	1213
1.4	Fishing	0	0	0	0	0	0
2	Mining & Quarrying	0	0	0	7	30	37
Primary Sector (1+2)		5465	197	1427	565	593	8247
3	Manufacturing(3.1 & 3.2)	85	0	10	2192	1857	4144
3.1	Registered	85	0	10	2192	1857	4144
3.2	Unregistered	0	0	0	0	0	0
4	Electricity, Gas & Water Supply	3682	0	3	2083	30	5798
5	Construction	2439	0	1415	769	45	4668
Secondary Sector(3+4+5)		6206	0	1428	5044	1932	14610
6	Trade Hotel & Restaurants(6.1 & 6.2)	563	214	1354	3	0	2134
6.1	Trade	0	0	0	3	0	3
6.2	Hotel & Restaurants	563	214	1354	0	0	2131
7	Transport, Storage & Communication(7.1 to 7.4)	1459	1008	7282	26	0	9775
7.1	Railway	0	0	0	0	0	0
7.2	Transport by Other Means	1459	1008	7282	26	0	9775
7.3	Storage	0	0	0	0	0	0
7.4	Communication	0	0	0	0	0	0
8	Banking , Insurance & Business Services(8.1 & 8.2)	15	0	0	16	170	201
8.1	Banking & Insurance	15	0	0	16	170	201
8.2	Business services	0	0	0	0	0	0
9	Community , Social & Personal services(9.1 & 9.2)	3310	22893	10355	778	0	37336
9.1	Public Administration	2389	21184	9386	667	0	33626
9.2	Other Services	921	1709	969	111	0	3710
Tertiary Sector(6+7+8+9)		5347	24115	18991	823	170	49446
Gross Fixed Capital Formation(GFCF)		17018	24312	21846	6432	2695	72303

Table-7: GFCF (Central Part) in Public Sector by Type of Asset & Industry of Use [Institution: DCUs]

Year -2009-10

(Figures are in Lakh INR)

SI No.	Industry of Use	Type of Asset					GFCF
		Building	Road & Bridges	Other Construction	Machinery & Equipment	Transport Equipment	
1	2	3	4	5	6	7	8
1	Agriculture & Allied activities(1.1 to 1.4)	185	0	1842	273	291	2591
1.1	Agriculture	158	0	1612	13	39	1822
1.2	Animal Husbandry	0	0	0	0	0	0
1.3	Forestry & Logging	27	0	230	260	252	769
1.4	Fishing	0	0	0	0	0	0
2	Mining & Quarrying	0	0	0	0	0	0
Primary Sector (1+2)		185	0	1842	273	291	2591
3	Manufacturing(3.1 & 3.2)	0	0	0	18	0	18
3.1	Registered	0	0	0	18	0	18
3.2	Unregistered	0	0	0	0	0	0
4	Electricity, Gas & Water Supply	0	0	0	0	0	0
5	Construction	0	0	0	0	0	0
Secondary Sector(3+4+5)		0	0	0	18	0	18
6	Trade Hotel & Restaurants(6.1 & 6.2)	0	0	0	0	0	0
6.1	Trade	0	0	0	0	0	0
6.2	Hotel & Restaurants	0	0	0	0	0	0
7	Transport, Storage & Communication(7.1 to 7.4)	0	290	0	0	0	290
7.1	Railway	0	0	0	0	0	0
7.2	Transport by Other Means	0	290	0	0	0	290
7.3	Storage	0	0	0	0	0	0
7.4	Communication	0	0	0	0	0	0
8	Banking , Insurance & Business Services(8.1 & 8.2)	0	0	0	0	0	0
8.1	Banking & Insurance	0	0	0	0	0	0
8.2	Business services	0	0	0	0	0	0
9	Community , Social & Personal services(9.1 & 9.2)	0	0	0	0	0	0
9.1	Public Administration	0	0	0	0	0	0
9.2	Other Services	0	0	0	0	0	0
Tertiary Sector(6+7+8+9)		0	290	0	0	0	290
Gross Fixed Capital Formation(GFCF)		185	290	1842	291	291	2899

Table-8: GFCF (Central Part) in Public Sector by Type of Asset & Industry of Use [Institution: NDCUs]

Year -2009-10

(Figures are in Lakh INR)

SI No.	Industry of Use	Type of Asset					GFCF
		Building	Road & Bridges	Other Construction	Machinery & Equipment	Transport Equipment	
1	2	3	4	5	6	7	8
1	Agriculture & Allied activities(1.1 to 1.4)	0	0	0	0	0	0
1.1	Agriculture	0	0	0	0	0	0
1.2	Animal Husbandry	0	0	0	0	0	0
1.3	Forestry & Logging	0	0	0	0	0	0
1.4	Fishing	0	0	0	0	0	0
2	Mining & Quarrying	3005	0	15667	25486	2452	46610
Primary Sector (1+2)		3005	0	15667	25486	2452	46610
3	Manufacturing(3.1 & 3.2)	4364	0	22747	37004	3561	67676
3.1	Registered	4364	0	22747	37004	3561	67676
3.2	Unregistered	0	0	0	0	0	0
4	Electricity, Gas & Water Supply	8633	0	45003	73209	7044	133889
5	Construction	1216	0	6339	10312	992	18859
Secondary Sector(3+4+5)		14213	0	74089	120525	11597	220424
6	Trade Hotel & Restaurants(6.1 & 6.2)	20	0	103	168	16	307
6.1	Trade	20	0	103	168	16	307
6.2	Hotel & Restaurants	0	0	0	0	0	0
7	Transport, Storage & Communication(7.1 to 7.4)	2433	0	12681	20630	1985	37729
7.1	Railway	0	0	0	0	0	0
7.2	Transport by Other Means	1287	0	6708	10913	1050	19958
7.3	Storage	9	0	45	74	7	135
7.4	Communication	1137	0	5928	9643	928	17636
8	Banking , Insurance & Business Services(8.1 & 8.2)	587	0	3060	4977	479	9103
8.1	Banking & Insurance	587	0	3060	4977	479	9103
8.2	Business services	0	0	0	0	0	0
9	Community , Social & Personal services(9.1 & 9.2)	0	0	0	0	0	0
9.1	Public Administration	0	0	0	0	0	0
9.2	Other Services	0	0	0	0	0	0
Tertiary Sector(6+7+8+9)		3040	0	15844	25775	2480	47139
Gross Fixed Capital Formation(GFCF)		20258	0	105600	171786	16529	314173

Table-9: GFCF (Central Part) in Public Sector by Type of Asset & Industry of Use [Institution: Supra Regional Sector]

Year -2009-10

(Figures are in Lakh INR)

SI No.	Industry of Use	Type of Asset					GFCF
		Building	Road & Bridges	Other Construction	Machinery & Equipment	Transport Equipment	
1	2	3	4	5	6	7	8
1	Agriculture & Allied activities(1.1 to 1.4)	0	0	0	0	0	0
1.1	Agriculture	0	0	0	0	0	0
1.2	Animal Husbandry	0	0	0	0	0	0
1.3	Forestry & Logging	0	0	0	0	0	0
1.4	Fishing	0	0	0	0	0	0
2	Mining & Quarrying	0	0	0	0	0	0
Primary Sector (1+2)		0	0	0	0	0	0
3	Manufacturing(3.1 & 3.2)	0	0	0	0	0	0
3.1	Registered	0	0	0	0	0	0
3.2	Unregistered	0	0	0	0	0	0
4	Electricity, Gas & Water Supply	0	0	0	0	0	0
5	Construction	0	0	0	0	0	0
Secondary Sector(3+4+5)		0	0	0	0	0	0
6	Trade Hotel & Restaurants(6.1 & 6.2)	0	0	0	0	0	0
6.1	Trade	0	0	0	0	0	0
6.2	Hotel & Restaurants	0	0	0	0	0	0
7	Transport, Storage & Communication(7.1 to 7.4)	3044	780	9069	6416	1117	20426
7.1	Railway	683	780	2036	1440	252	5191
7.2	Transport by Other Means	0	0	0	0	0	0
7.3	Storage	0	0	0	0	0	0
7.4	Communication	2361	0	7033	4976	865	15235
8	Banking , Insurance & Business Services(8.1 & 8.2)	583	0	1738	1229	215	3765
8.1	Banking & Insurance	583	0	1738	1229	215	3765
8.2	Business services	0	0	0	0	0	0
9	Community , Social & Personal services(9.1 & 9.2)	0	0	0	0	0	0
9.1	Public Administration	0	0	0	0	0	0
9.2	Other Services	0	0	0	0	0	0
Tertiary Sector(6+7+8+9)		3627	780	10807	7645	1332	24191
Gross Fixed Capital Formation(GFCF)		3627	780	10807	7645	1332	24191

Table-10: GFCF (Central Part) in Public Sector by Type of Asset & Industry of Use [Institution: All Institutions]

Year -2009-10

(Figures are in Lakh INR)

SI No.	Industry of Use	Type of Assets					GFCF
		Building	Road & Bridges	Other Construction	Machinery & Equipment	Transport Equipment	
1	2	3	4	5	6	7	8
1	Agriculture & Allied activities(1.1 to 1.4)	5650	197	3269	831	854	10801
1.1	Agriculture	819	0	2415	261	477	3972
1.2	Animal Husbandry	4412	0	0	310	125	4847
1.3	Forestry & Logging	419	197	854	260	252	1982
1.4	Fishing	0	0	0	0	0	0
2	Mining & Quarrying	3005	0	15667	25493	2482	46647
Primary Sector (1+2)		8655	197	18936	26324	3336	57448
3	Manufacturing(3.1 & 3.2)	4449	0	22757	39214	5418	71838
3.1	Registered	4449	0	22757	39214	5418	71838
3.2	Unregistered	0	0	0	0	0	0
4	Electricity, Gas & Water Supply	12315	0	45006	75292	7074	139687
5	Construction	3655	0	7754	11081	1037	23527
Secondary Sector(3+4+5)		20419	0	75517	125587	13529	235052
6	Trade Hotel & Restaurants(6.1 & 6.2)	583	214	1457	171	16	2441
6.1	Trade	20	0	103	171	16	310
6.2	Hotel & Restaurants	563	214	1354	0	0	2131
7	Transport, Storage & Communication(7.1 to 7.4)	6936	2078	29032	27072	3102	68220
7.1	Railway	683	780	2036	1440	252	5191
7.2	Transport by Other Means	2746	1298	13990	10939	1050	30023
7.3	Storage	9	0	45	74	7	135
7.4	Communication	3498	0	12961	14619	1793	32871
8	Banking , Insurance & Business Services(8.1 & 8.2)	1185	0	4798	6222	864	13069
8.1	Banking & Insurance	1185	0	4798	6222	864	13069
8.2	Business services	0	0	0	0	0	0
9	Community , Social & Personal services(9.1 & 9.2)	3310	22893	10355	778	0	37336
9.1	Public Administration	2389	21184	9386	667	0	33626
9.2	Other Services	921	1709	969	111	0	3710
Tertiary Sector(6+7+8+9)		12014	25185	45642	34243	3982	121066
Gross Fixed Capital Formation(GFCF)		41088	25382	140095	186154	20847	413566

Table-11: GFCF (State + Central Part) in Public Sector by Type of Asset & Industry of Use [Institution: All Institutions]

Year -2009-10

(figures are in Lakh INR)

SI No.	Industry of Use	Type of Asset					
		Public					
		Building	Road & Bridges	Other Construction	Machinery & Equipment	Transport Equipment	GFCF
1	2	3	4	5	6	7	8
1	Agriculture & Allied activities(1.1 to 1.4)	17067	934	34245	3992	1185	57423
1.1	Agriculture	3217	0	29259	2867	650	35994
1.2	Animal Husbandry	12472	0	0	496	166	13134
1.3	Forestry & Logging	1378	934	4986	628	369	8296
1.4	Fishing	0	0	0	0	0	0
2	Mining & Quarrying	3005	0	15667	25497	2492	46661
Primary Sector (1+2)		20072	934	49912	29489	3677	104084
3	Manufacturing(3.1 & 3.2)	4606	0	22763	40549	6022	73940
3.1	Registered	4606	0	22763	40549	6022	73940
3.2	Unregistered	0	0	0	0	0	0
4	Electricity, Gas & Water Supply	19668	0	64955	108266	7180	200069
5	Construction	8112	45067	8505	11542	1052	74278
Secondary Sector(3+4+5)		32386	45067	96223	160357	14254	348287
6	Trade Hotel & Restaurants(6.1 & 6.2)	1611	1012	2175	225	58	5081
6.1	Trade	1048	0	103	225	58	1434
6.2	Hotel & Restaurants	563	1012	2072	0	0	3647
7	Transport, Storage & Communication(7.1 to 7.4)	9602	6050	32895	27183	2402	78132
7.1	Railway	683	780	2036	1440	252	5191
7.2	Transport by Other Means	5412	5270	17853	11049	350	39933
7.3	Storage	9	0	45	74	7	135
7.4	Communication	3498	0	12961	14620	1793	32872
8	Banking , Insurance & Business Services(8.1 & 8.2)	1212	10	4798	6222	919	13161
8.1	Banking & Insurance	1212	10	4798	6222	919	13161
8.2	Business services	0	0	0	0	0	0
9	Community , Social & Personal services(9.1 & 9.2)	15480	108389	20605	1603	194	146271
9.1	Public Administration	6754	100297	14366	1066	0	122483
9.2	Other Services	8726	8092	6239	537	194	23788
Tertiary Sector(6+7+8+9)		27905	115461	60473	35233	3572	242645
Gross Fixed Capital Formation(GFCF)		80363	161462	206609	225078	21504	695016

Table-12: GFCF (State Part) in Public Sector by Type of Asset & Industry of Use [Institution: Administrative Departments]

Year -2010-11

(figures are in Lakh INR)

SI No.	Industry of Use	Type of Asset					GFCF
		Building	Road & Bridges	Other Construction	Machinery & Equipment	Transport Equipment	
1	2	3	4	5	6	7	8
1	Agriculture & Allied activities(1.1 to 1.4)	2631	292	4376	214	43	7556
1.1	Agriculture	154	10	3870	49	43	4126
1.2	Animal Husbandry	1269	0	96	70	0	1435
1.3	Forestry & Logging	1208	282	410	93	0	1993
1.4	Fishing	0	0	0	2	0	2
2	Mining & Quarrying	0	0	0	10	0	10
Primary Sector (1+2)		2631	292	4376	224	43	7566
3	Manufacturing(3.1 & 3.2)	0	0	3	7	7	17
3.1	Registered	0	0	3	7	7	17
3.2	Unregistered	0	0	0	0	0	0
4	Electricity, Gas & Water Supply	0	0	0	0	0	0
5	Construction	1433	94967	8157	663	293	105513
Secondary Sector(3+4+5)		1433	94967	8160	670	300	105530
6	Trade Hotel & Restaurants(6.1 & 6.2)	6625	98	975	13	0	7711
6.1	Trade	0	0	0	13	0	13
6.2	Hotel & Restaurants	6625	98	975	0	0	7698
7	Transport, Storage & Communication(7.1 to 7.4)	729	7092	0	3	0	7824
7.1	Railway	0	0	0	0	0	0
7.2	Transport by Other Means	729	7092	0	0	0	7821
7.3	Storage	0	0	0	3	0	3
7.4	Communication	0	0	0	0	0	0
8	Banking , Insurance & Business Services(8.1 & 8.2)	4000	0	0	0	0	4000
8.1	Banking & Insurance	4000	0	0	0	0	4000
8.2	Business services	0	0	0	0	0	0
9	Community , Social & Personal services(9.1 & 9.2)	39782	9067	6658	6678	595	62780
9.1	Public Administration	27836	9067	6066	3034	581	46584
9.2	Other Services	11946	0	592	3644	14	16196
Tertiary Sector(6+7+8+9)		51136	16257	7633	6694	595	82315
Gross Fixed Capital Formation(GFCF)		55200	111516	20169	7588	938	195411

Table-13: GFCF (State Part) in Public Sector by Type of Asset & Industry of Use [Institution: DCUs]

Year -2010-11

(figures are in Lakh INR)

SI No.	Industry of Use	Type of Asset					GFCF
		Building	Road & Bridges	Other Construction	Machinery & Equipment	Transport Equipment	
1	2	3	4	5	6	7	8
1	Agriculture & Allied activities(1.1 to 1.4)	1460	0	39146	365	152	41123
1.1	Agriculture	1250	0	35125	15	15	36405
1.2	Animal Husbandry	0	0	0	0	0	0
1.3	Forestry & Logging	210	0	4021	350	137	4718
1.4	Fishing	0	0	0	0	0	0
2	Mining & Quarrying	0	0	0	0	0	0
Primary Sector (1+2)		1460	0	39146	365	152	41123
3	Manufacturing(3.1 & 3.2)	2	0	0	26	0	28
3.1	Registered	2	0	0	26	0	28
3.2	Unregistered	0	0	0	0	0	0
4	Electricity, Gas & Water Supply	0	0	0	0	0	0
5	Construction	0	0	0	0	0	0
Secondary Sector(3+4+5)		2	0	0	26	0	28
6	Trade Hotel & Restaurants(6.1 & 6.2)	0	0	0	0	0	0
6.1	Trade	0	0	0	0	0	0
6.2	Hotel & Restaurants	0	0	0	0	0	0
7	Transport, Storage & Communication(7.1 to 7.4)	0	430	80	2	0	512
7.1	Railway	0	0	0	0	0	0
7.2	Transport by Other Means	0	430	80	2	0	512
7.3	Storage	0	0	0	0	0	0
7.4	Communication	0	0	0	0	0	0
8	Banking , Insurance & Business Services(8.1 & 8.2)	0	0	0	0	0	0
8.1	Banking & Insurance	0	0	0	0	0	0
8.2	Business services	0	0	0	0	0	0
9	Community , Social & Personal services(9.1 & 9.2)	0	0	0	0	0	0
9.1	Public Administration	0	0	0	0	0	0
9.2	Other Services	0	0	0	0	0	0
Tertiary Sector(6+7+8+9)		0	430	80	2	0	512
Gross Fixed Capital Formation(GFCF)		1462	430	39226	393	152	41663

Table-14: GFCF (State Part) in Public Sector by Type of Asset & Industry of Use [Institution: NDCUs]

Year -2010-11

(figures are in Lakh INR)

SI No.	Industrty of Use	Type of Asset					GFCF
		Building	Road & Bridges	Other Construction	Machinery & Equipment	Transport Equipment	
1	2	3	4	5	6	7	8
1	Agriculture & Allied activities(1.1 to 1.4)	117	0	0	1481	1	1599
1.1	Agriculture	110	0	0	37	1	148
1.2	Animal Husbandry	0	0	0	0	0	0
1.3	Forestry & Logging	7	0	0	1444	0	1451
1.4	Fishing	0	0	0	0	0	0
2	Mining & Quarrying	0	0	0	0	0	0
Primary Sector (1+2)		117	0	0	1481	1	1599
3	Manufacturing(3.1 & 3.2)	0	0	0	0	0	0
3.1	Registered	0	0	0	0	0	0
3.2	Unregistered	0	0	0	0	0	0
4	Electricity, Gas & Water Supply	1158	0	974	47920	54	50106
5	Construction	0	0	0	0	0	0
Secondary Sector(3+4+5)		1158	0	974	47920	54	50106
6	Trade Hotel & Restaurants(6.1 & 6.2)	0	0	2	1	2	6
6.1	Trade	0	0	2	1	2	6
6.2	Hotel & Restaurants	0	0	0	0	0	0
7	Transport, Storage & Communication(7.1 to 7.4)	0	0	0	79	1590	1669
7.1	Railway	0	0	0	0	0	0
7.2	Transport by Other Means	0	0	0	79	1587	1666
7.3	Storage	0	0	0	0	0	0
7.4	Communication	0	0	0	0	2	3
8	Banking , Insurance & Business Services(8.1 & 8.2)	0	0	0	0	0	0
8.1	Banking & Insurance	0	0	0	0	0	0
8.2	Business services	0	0	0	0	0	0
9	Community , Social & Personal services(9.1 & 9.2)	0	0	0	0	0	0
9.1	Public Administration	0	0	0	0	0	0
9.2	Other Services	0	0	0	0	0	0
Tertiary Sector(6+7+8+9)		0	0	2	80	1592	1675
Gross Fixed Capital Formation(GFCF)		1275	0	976	49481	1647	53379

Table-15: GFCF (State Part) in Public Sector by Type of Asset & Industry of Use [Institution: Local Bodies]

Year -2010-11

(figures are in Lakh INR)

Sl No.	Industry of Use	Type of Asset					GFCF
		Building	Road & Bridges	Other Construction	Machinery & Equipment	Transport Equipment	
1	2	3	4	5	6	7	8
1	Agriculture & Allied activities(1.1 to 1.4)	0	0	224	0	0	224
1.1	Agriculture	0	0	224	0	0	224
1.2	Animal Husbandry	0	0	0	0	0	0
1.3	Forestry & Logging	0	0	0	0	0	0
1.4	Fishing	0	0	0	0	0	0
2	Mining & Quarrying	0	0	0	0	0	0
Primary Sector (1+2)		0	0	224	0	0	224
3	Manufacturing(3.1 & 3.2)	0	0	0	0	0	0
3.1	Registered	0	0	0	0	0	0
3.2	Unregistered	0	0	0	0	0	0
4	Electricity, Gas & Water Supply	0	0	3595	0	0	3595
5	Construction	0	48671	0	0	0	48671
Secondary Sector(3+4+5)		0	48671	3595	0	0	52266
6	Trade Hotel & Restaurants(6.1 & 6.2)	0	0	0	0	0	0
6.1	Trade	0	0	0	0	0	0
6.2	Hotel & Restaurants	0	0	0	0	0	0
7	Transport, Storage & Communication(7.1 to 7.4)	0	0	0	0	0	0
7.1	Railway	0	0	0	0	0	0
7.2	Transport by Other Means	0	0	0	0	0	0
7.3	Storage	0	0	0	0	0	0
7.4	Communication	0	0	0	0	0	0
8	Banking , Insurance & Business Services(8.1 & 8.2)	0	0	0	0	0	0
8.1	Banking & Insurance	0	0	0	0	0	0
8.2	Business services	0	0	0	0	0	0
9	Community , Social & Personal services(9.1 & 9.2)	4209	0	4368	824	175	9576
9.1	Public Administration	0	0	0	0	0	0
9.2	Other Services	4209	0	4368	824	175	9576
Tertiary Sector(6+7+8+9)		4209	0	4368	824	175	9576
Gross Fixed Capital Formation(GFCF)		4209	48671	8187	824	175	62066

Table-16: GFCF (State Part) in Public Sector by Type of Asset & Industry of Use [Institution: All Institutions]

Year -2010-11

(figures are in Lakh INR)

SI No.	Industry of Use	Type of Asset					GFCF
		Building	Road & Bridges	Other Construction	Machinery & Equipment	Transport Equipment	
1	2	3	4	5	6	7	8
1	Agriculture & Allied activities(1.1 to 1.4)	4208	292	43746	2060	196	50502
1.1	Agriculture	1514	10	39219	101	59	40903
1.2	Animal Husbandry	1269	0	96	70	0	1435
1.3	Forestry & Logging	1425	282	4431	1887	137	8162
1.4	Fishing	0	0	0	2	0	2
2	Mining & Quarrying	0	0	0	10	0	10
Primary Sector (1+2)		4208	292	43746	2070	196	50512
3	Manufacturing(3.1 & 3.2)	2	0	3	33	7	45
3.1	Registered	2	0	3	33	7	45
3.2	Unregistered	0	0	0	0	0	0
4	Electricity, Gas & Water Supply	1158	0	4569	47920	54	53701
5	Construction	1433	143638	8157	663	293	154184
Secondary Sector(3+4+5)		2593	143638	12729	48616	354	207930
6	Trade Hotel & Restaurants(6.1 & 6.2)	6625	98	978	14	2	7717
6.1	Trade	0	0	3	14	2	19
6.2	Hotel & Restaurants	6625	98	975	0	0	7698
7	Transport, Storage & Communication(7.1 to 7.4)	729	7522	80	84	1590	10005
7.1	Railway	0	0	0	0	0	0
7.2	Transport by Other Means	729	7522	80	81	1587	9999
7.3	Storage	0	0	0	3	0	3
7.4	Communication	0	0	0	0	2	3
8	Banking , Insurance & Business Services(8.1 & 8.2)	4000	0	0	0	0	4000
8.1	Banking & Insurance	4000	0	0	0	0	4000
8.2	Business services	0	0	0	0	0	0
9	Community , Social & Personal services(9.1 & 9.2)	43991	9067	11026	7502	770	72356
9.1	Public Administration	27836	9067	6066	3034	581	46584
9.2	Other Services	16155	0	4960	4468	189	25772
Tertiary Sector(6+7+8+9)		55345	16687	12084	7600	2362	94078
Gross Fixed Capital Formation(GFCF)		62146	160617	68559	58286	2912	352520

Table-17: GFCF (Central Part) in Public Sector by Type of Asset & Industry of Use [Institution: Administrative Departments]

Year -2010-11

(figures are in Lakh INR)

SI No.	Industry of Use	Type of Assets					GFCF
		Building	Road & Bridges	Other Construction	Machinery & Equipment	Transport Equipment	
1	2	3	4	5	6	7	8
1	Agriculture & Allied activities(1.1 to 1.4)	1104	80	5754	233	144	7315
1.1	Agriculture	64	3	5089	54	144	5354
1.2	Animal Husbandry	533	0	126	76	0	735
1.3	Forestry & Logging	507	77	539	101	0	1224
1.4	Fishing	0	0	0	2	0	2
2	Mining & Quarrying	0	0	0	11	0	11
Primary Sector (1+2)		1104	80	5754	244	144	7326
3	Manufacturing(3.1 & 3.2)	0	0	3	7	25	35
3.1	Registered	0	0	3	7	25	35
3.2	Unregistered	0	0	0	0	0	0
4	Electricity, Gas & Water Supply	0	0	0	0	0	0
5	Construction	601	26060	10727	722	983	39093
Secondary Sector(3+4+5)		601	26060	10730	729	1008	39128
6	Trade Hotel & Restaurants(6.1 & 6.2)	2781	27	1282	14	0	4104
6.1	Trade	0	0	0	14	0	14
6.2	Hotel & Restaurants	2781	27	1282	0	0	4090
7	Transport, Storage & Communication(7.1 to 7.4)	306	1946	0	3	0	2255
7.1	Railway	0	0	0	0	0	0
7.2	Transport by Other Means	306	1946	0	0	0	2252
7.3	Storage	0	0	0	3	0	3
7.4	Communication	0	0	0	0	0	0
8	Banking , Insurance & Business Services(8.1 & 8.2)	1679	0	0	0	0	1679
8.1	Banking & Insurance	1679	0	0	0	0	1679
8.2	Business services	0	0	0	0	0	0
9	Community , Social & Personal services(9.1 & 9.2)	16697	2488	8755	7269	1996	37205
9.1	Public Administration	11683	2488	7977	3302	1949	27399
9.2	Other Services	5014	0	778	3967	47	9806
Tertiary Sector(6+7+8+9)		21463	4461	10037	7286	1996	45243
Gross Fixed Capital Formation(GFCF)		23168	30601	26521	8259	3148	91697

Table-18: GFCF (Central Part) in Public Sector by Type of Asset & Industry of Use [Institution: DCUs]

Year -2010-11

(figures are in Lakh INR)

SI No.	Industry of Use	Type of Assets					
		Public					
		Building	Road & Bridges	Other Construction	Machinery & Equipment	Transport Equipment	GFCF
1	2	3	4	5	6	7	8
1	Agriculture & Allied activities(1.1 to 1.4)	241	0	2323	341	355	3260
1.1	Agriculture	206	0	2084	14	35	2339
1.2	Animal Husbandry	0	0	0	0	0	0
1.3	Forestry & Logging	35	0	239	327	320	921
1.4	Fishing	0	0	0	0	0	0
2	Mining & Quarrying	0	0	0	0	0	0
Primary Sector (1+2)		241	0	2323	341	355	3260
3	Manufacturing(3.1 & 3.2)	0	0	0	24	0	24
3.1	Registered	0	0	0	24	0	24
3.2	Unregistered	0	0	0	0	0	0
4	Electricity, Gas & Water Supply	0	0	0	0	0	0
5	Construction	0	0	0	0	0	0
Secondary Sector(3+4+5)		0	0	0	24	0	24
6	Trade Hotel & Restaurants(6.1 & 6.2)	0	0	0	0	0	0
6.1	Trade	0	0	0	0	0	0
6.2	Hotel & Restaurants	0	0	0	0	0	0
7	Transport, Storage & Communication(7.1 to 7.4)	0	309	5	2	0	316
7.1	Railway	0	0	0	0	0	0
7.2	Transport by Other Means	0	309	5	2	0	316
7.3	Storage	0	0	0	0	0	0
7.4	Communication	0	0	0	0	0	0
8	Banking , Insurance & Business Services(8.1 & 8.2)	0	0	0	0	0	0
8.1	Banking & Insurance	0	0	0	0	0	0
8.2	Business services	0	0	0	0	0	0
9	Community , Social & Personal services(9.1 & 9.2)	0	0	0	0	0	0
9.1	Public Administration	0	0	0	0	0	0
9.2	Other Services	0	0	0	0	0	0
Tertiary Sector(6+7+8+9)		0	309	5	2	0	316
Gross Fixed Capital Formation(GFCF)		241	309	2328	367	355	3600

Table-19: GFCF (Central Part) in Public Sector by Type of Asset & Industry of Use (Institution: NDCUs)

Year -2010-11

(figures are in Lakh INR)

SI No.	Industry of Use	Type of Assets					GFCF
		Building	Road & Bridges	Other Construction	Machinery & Equipment	Transport Equipment	
1	2	3	4	5	6	7	8
1	Agriculture & Allied activities(1.1 to 1.4)	0	0	0	0	0	0
1.1	Agriculture	0	0	0	0	0	0
1.2	Animal Husbandry	0	0	0	0	0	0
1.3	Forestry & Logging	0	0	0	0	0	0
1.4	Fishing	0	0	0	0	0	0
2	Mining & Quarrying	3826	0	25758	39023	3568	72175
Primary Sector (1+2)		3826	0	25758	39023	3568	72175
3	Manufacturing(3.1 & 3.2)	417	0	2805	4250	389	7861
3.1	Registered	417	0	2805	4250	389	7861
3.2	Unregistered	0	0	0	0	0	0
4	Electricity, Gas & Water Supply	10436	0	70253	106434	9732	196855
5	Construction	1569	0	10560	15999	1463	29591
Secondary Sector(3+4+5)		12422	0	83618	126683	11584	234307
6	Trade Hotel & Restaurants(6.1 & 6.2)	22	0	149	226	21	418
6.1	Trade	22	0	149	226	21	418
6.2	Hotel & Restaurants	0	0	0	0	0	0
7	Transport, Storage & Communication(7.1 to 7.4)	2967	0	19966	30249	2766	55948
7.1	Railway	0	0	0	0	0	0
7.2	Transport by Other Means	1326	0	8923	13519	1236	25004
7.3	Storage	839	0	5646	8553	782	15820
7.4	Communication	802	0	5397	8177	748	15124
8	Banking , Insurance & Business Services(8.1 & 8.2)	751	0	5053	7656	700	14160
8.1	Banking & Insurance	751	0	5053	7656	700	14160
8.2	Business services	0	0	0	0	0	0
9	Community , Social & Personal services(9.1 & 9.2)	0	0	0	0	0	0
9.1	Public Administration	0	0	0	0	0	0
9.2	Other Services	0	0	0	0	0	0
Tertiary Sector(6+7+8+9)		3740	0	25168	38131	3487	70526
Gross Fixed Capital Formation(GFCF)		19988	0	134544	203837	18639	377008

Table-20: GFCF (Central Part) in Public Sector by Type of Asset & Industry of Use [Institution: NDCUs]

Year -2010-11

(figures are in Lakh INR)

SI No.	Industry of Use	Type of Asset					GFCF
		Building	Road & Bridges	Other Construction	Machinery & Equipment	Transport Equipment	
1	2	3	4	5	6	7	8
1	Agriculture & Allied activities(1.1 to 1.4)	0	0	0	0	0	0
1.1	Agriculture	0	0	0	0	0	0
1.2	Animal Husbandry	0	0	0	0	0	0
1.3	Forestry & Logging	0	0	0	0	0	0
1.4	Fishing	0	0	0	0	0	0
2	Mining & Quarrying	0	0	0	0	0	0
Primary Sector (1+2)		0	0	0	0	0	0
3	Manufacturing(3.1 & 3.2)	0	0	0	0	0	0
3.1	Registered	0	0	0	0	0	0
3.2	Unregistered	0	0	0	0	0	0
4	Electricity, Gas & Water Supply	0	0	0	0	0	0
5	Construction	0	0	0	0	0	0
Secondary Sector(3+4+5)		0	0	0	0	0	0
6	Trade Hotel & Restaurants(6.1 & 6.2)	0	0	0	0	0	0
6.1	Trade	0	0	0	0	0	0
6.2	Hotel & Restaurants	0	0	0	0	0	0
7	Transport, Storage & Communication(7.1 to 7.4)	1749	2345	4056	3142	541	11833
7.1	Railway	2069	2345	4797	3716	639	13566
7.2	Transport by Other Means	0	0	0	0	0	0
7.3	Storage	0	0	0	0	0	0
7.4	Communication	-320	0	-741	-574	-98	-1733
8	Banking , Insurance & Business Services(8.1 & 8.2)	901	0	2088	1617	278	4884
8.1	Banking & Insurance	901	0	2088	1617	278	4884
8.2	Business services	0	0	0	0	0	0
9	Community , Social & Personal services(9.1 & 9.2)	0	0	0	0	0	0
9.1	Public Administration	0	0	0	0	0	0
9.2	Other Services	0	0	0	0	0	0
Tertiary Sector(6+7+8+9)		2650	2345	6144	4759	819	16717
Gross Fixed Capital Formation(GFCF)		2650	2345	6144	4759	819	16717

Table-21: GFCF (Central Part) in Public Sector by Type of Asset & Industry of Use [Institution: All Institution]

Year -2010-11

(figures are in Lakh INR)

SI No.	Industry of Use	Type of Asset					GFCF
		Building	Road & Bridges	Other Construction	Machinery & Equipment	Transport Equipment	
1	2	3	4	5	6	7	8
1	Agriculture & Allied activities(1.1 to 1.4)	1345	80	8077	574	499	10575
1.1	Agriculture	270	3	7173	68	179	7693
1.2	Animal Husbandry	533	0	126	76	0	735
1.3	Forestry & Logging	542	77	778	428	320	2145
1.4	Fishing	0	0	0	2	0	2
2	Mining & Quarrying	3826	0	25758	39034	3568	72186
Primary Sector (1+2)		5171	80	33835	39608	4067	82761
3	Manufacturing(3.1 & 3.2)	417	0	2808	4281	414	7920
3.1	Registered	417	0	2808	4281	414	7920
3.2	Unregistered	0	0	0	0	0	0
4	Electricity, Gas & Water Supply	10436	0	70253	106434	9732	196855
5	Construction	2170	26060	21287	16721	2446	68684
Secondary Sector(3+4+5)		13023	26060	94348	127436	12592	273459
6	Trade Hotel & Restaurants(6.1 & 6.2)	2803	27	1431	240	21	4522
6.1	Trade	22	0	149	240	21	432
6.2	Hotel & Restaurants	2781	27	1282	0	0	4090
7	Transport, Storage & Communication(7.1 to 7.4)	5022	4600	24027	33396	3307	70352
7.1	Railway	2069	2345	4797	3716	639	13566
7.2	Transport by Other Means	1632	2255	8928	13521	1236	27572
7.3	Storage	839	0	5646	8556	782	15823
7.4	Communication	482	0	4656	7603	650	13391
8	Banking , Insurance & Business Services(8.1 & 8.2)	3331	0	7141	9273	978	20723
8.1	Banking & Insurance	3331	0	7141	9273	978	20723
8.2	Business services	0	0	0	0	0	0
9	Community , Social & Personal services(9.1 & 9.2)	16697	2488	8755	7269	1996	37205
9.1	Public Administration	11683	2488	7977	3302	1949	27399
9.2	Other Services	5014	0	778	3967	47	9806
Tertiary Sector(6+7+8+9)		27853	7115	41354	50178	6302	132802
Gross Fixed Capital Formation(GFCF)		46047	33255	169537	217222	22961	489022

Table-22: GFCF (State + Central Part) in Public Sector by Type of Asset & Industry of Use (Institution:All Institution)

Year -2010-11

(figures are in Lakh INR)

SI No.	Industry of Use	Type of Asset					GFCF
		Building	Road & Bridges	Other Construction	Machinery & Equipment	Transport Equipment	
1	2	3	4	5	6	7	8
1	Agriculture & Allied activities(1.1 to 1.4)	5553	372	51823	2634	695	61077
1.1	Agriculture	1784	13	46392	169	238	48596
1.2	Animal Husbandry	1802	0	222	146	0	2170
1.3	Forestry & Logging	1967	359	5209	2315	457	10307
1.4	Fishing	0	0	0	4	0	4
2	Mining & Quarrying	3826	0	25758	39044	3568	72196
Primary Sector (1+2)		9379	372	77581	41678	4263	133273
3	Manufacturing(3.1 & 3.2)	419	0	2811	4314	421	7965
3.1	Registered	419	0	2811	4314	421	7965
3.2	Unregistered	0	0	0	0	0	0
4	Electricity, Gas & Water Supply	11594	0	74822	154354	9786	250556
5	Construction	3603	169698	29444	17384	2739	222868
Secondary Sector(3+4+5)		15616	169698	107077	176052	12946	481389
6	Trade Hotel & Restaurants(6.1 & 6.2)	9428	125	2409	254	23	12239
6.1	Trade	22	0	152	254	23	451
6.2	Hotel & Restaurants	9406	125	2257	0	0	11788
7	Transport, Storage & Communication(7.1 to 7.4)	5751	12122	24107	33480	4897	80357
7.1	Railway	2069	2345	4797	3716	639	13566
7.2	Transport by Other Means	2361	9777	9008	13602	2823	37571
7.3	Storage	839	0	5646	8559	782	15826
7.4	Communication	482	0	4656	7603	652	13394
8	Banking , Insurance & Business Services(8.1 & 8.2)	7331	0	7141	9273	978	24723
8.1	Banking & Insurance	7331	0	7141	9273	978	24723
8.2	Business services	0	0	0	0	0	0
9	Community , Social & Personal services(9.1 & 9.2)	60688	11555	19781	14771	2766	109561
9.1	Public Administration	39519	11555	14043	6336	2530	73983
9.2	Other Services	21169	0	5738	8435	236	35578
Tertiary Sector(6+7+8+9)		83198	23802	53438	57778	8664	226880
Gross Fixed Capital Formation(GFCF)		108193	193872	238096	275508	25873	841542

ANNEXURE-1

Non-Departmental Commercial Undertakings (NDCUs) of Uttarakhand:

- 1- Uttarakhand Power Corporation Limited
- 2- Power Transmission Corporation of Uttarakhand Limited
- 3- Uttarakhand Transport Corporation
- 4- Garhwal Mandal vikas Nigam Limited
- 5- Kumaon Mandal Vikas Nigam Limited
- 6- UP Hill Electronics Corporation Limited
- 7- Uttarakhand Renewable Energy Development Agency
- 8- Uttarakhand Seeds and Tarai Development Corporation
- 9- Uttarakhand Jal Vidhut Nigam Limited

Departmental Commercial Undertakings (DCUs) of Uttarakhand:

- 1- Irrigation
- 2- Forest
- 3- Civil Aviation
