



Composite Regional Centre (CRC) for Skill Development, Rehabilitation & Empowerment of Persons with Disabilities, Guwahati

GMCH, Campus, Hostel Road, Bhangagarh, Guwahati-781032
Department of Empowerment of Persons with disabilities (Divyangjan) , Ministry of Social
Justice and Empowerment, Government of India. Phone:0361-2347879,
Website:crcguwahati.com, Email: crcguwahati@gmail.com

CRE-REPORT

Topic: "Assessment tool for early identification for children with special needs"

Mode: Online

Venue & Time of the program: Webex meeting Online (10.00AM-1.00PM)

CRE Proposal ID: CRE-25061115052929/2025-RCI

Participants of the Program: All Rehab Professionals

Programme Coordinators:

1. Mr. Kundan Kumar

- RCI CRR: A81468
- Audiologist and speech language pathologist, CDEIC, CRCSRE, Guwahati-32
- Email: aslpkundan@gmail.com

2. Ms. Dipandita Nath

- Audiologist and speech language pathologist, CRCSRE, Guwahati-32

Details of CRE:

Day/Date	Time	Topic	Total footfalls (Registered)	Total Verified Participants
07/08/2025 Thursday	10:00 AM To 01:00 PM	Assessment tool for early identification for children with special needs	250	164

Introduction:

A Continuing Rehabilitation Education (CRE) Program on "Assessment tool for early identification for children with special needs" approved by RCI, New Delhi was successfully conducted on 07/08/2025 from 10:00 am to 1:00 pm (3 hours) through online mode (Webex Meeting Platform). The event was organized to enhance the knowledge and professional skills of rehabilitation professionals.

PROGRAMME COORDINATOR: MR KUNDAN KUMAR (CRR A81468)

Event Highlights:

The CRE Online Programme commenced with an inaugural session and welcome address delivered by **Dr. Prasanna Kumar Lenka, *Director of CRCSRE-Guwahati***. Dr. Lenka graced the occasion virtually, presenting the keynote address and highlighting the main aspects of the session's topic. The event was coordinated by the Programme Coordinator, **Mr Kundan Kumar ASLP, CDEIC, *Speech and Hearing, CRCSRE-Guwahati***, and attended by RCI-registered professionals participating in the CRE programme titled "Assessment Tools for Early Identification of Children with Special Needs."

Two experienced resource persons from the field of Speech and Hearing, **Mr. Debarshi Das (*M.Sc. SLP*)** and **Ms. Kristi Krishna (*M.Sc. SLP*)**, delivered their lectures virtually. They also engaged participants in interactive question-and-answer sessions, contributing valuable insights to the programme.

Key sessions included:

The programme comprised two sessions in total. The first session lasted for two hours. The second session was lasted for one hour duration.

Participants:

Total 164 participants (approved seats 250) participated in this program

Brief report of the program:

A three-hour online CRE webinar was organized at CRC Guwahati, as approved by the RCI. The webinar was attended by a total of 164 participants, all registered rehabilitation professionals with RCI, representing various districts from different states and working with individuals with disabilities. The program was conducted in accordance with RCI guidelines and approval (F. No. CRE-25061115052929/2025-RCI), dated 07/08/2025.

The CRE online programme featured three technical sessions led by distinguished guest and resource experts. Both the first and second sessions were conducted by **Mr. Debarshi Das**, these sessions covered the *sub-topics "Introduction and Foundation," "Domains of Early Intervention," "Advocacy," "Awareness," and "Policy,"* providing participants with foundational insights and critical information on early identification strategies.

The concluding session was presented by **Ms. Kristi Krishna**. Her session focused on *"Assessment & Referral," as well as initiatives undertaken by government and non-governmental organizations (NGOs) in support of children with special needs.*

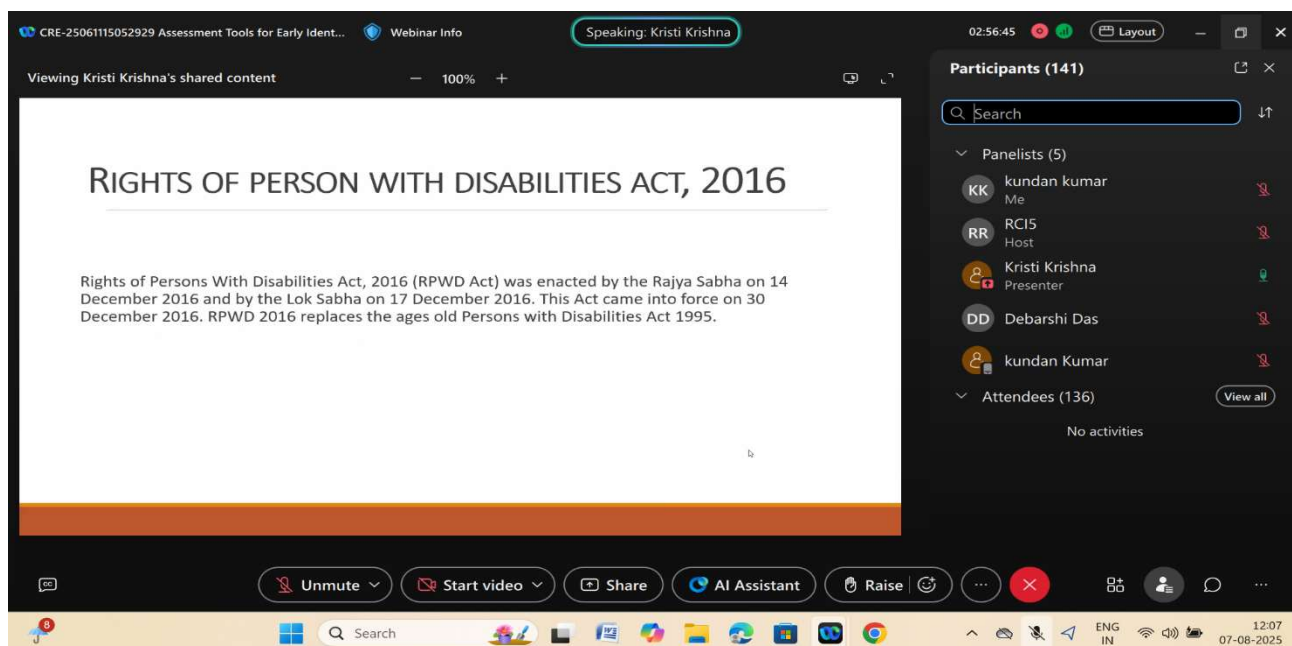
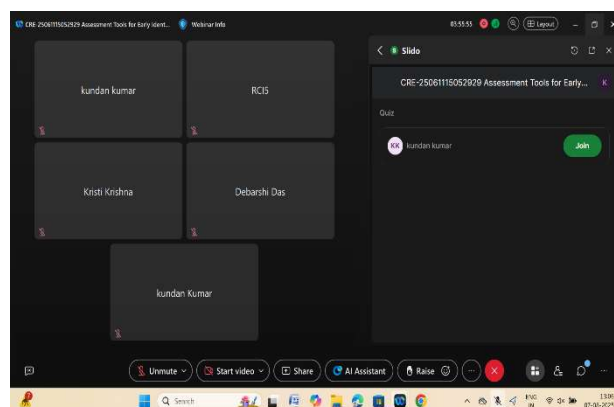
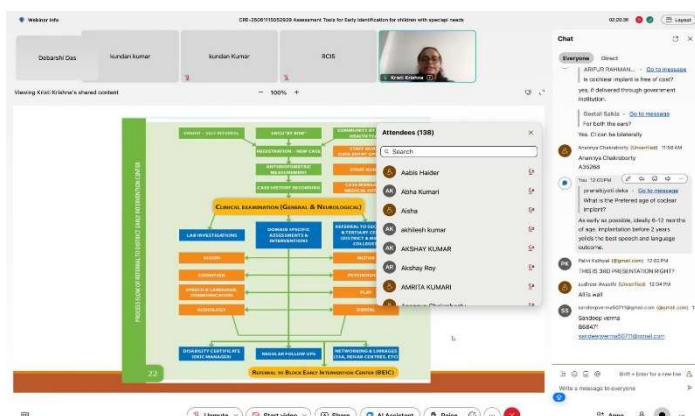
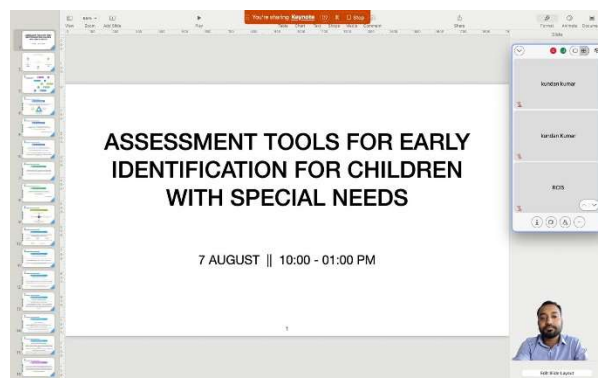
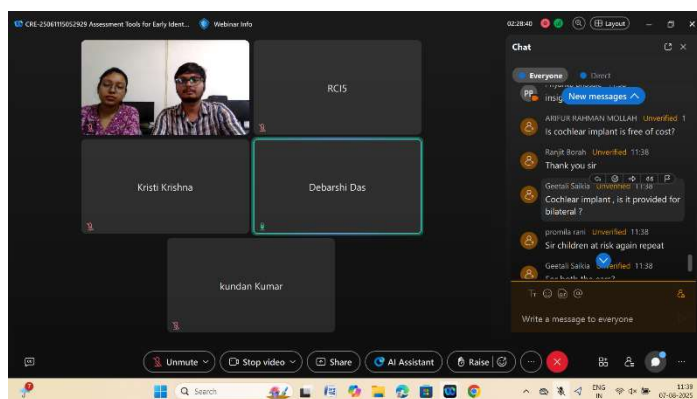
Following the completion of both technical sessions, the programme concluded with a Vote of Thanks delivered by **Mr. Kundan Kumar, ASLP, CDEIC, *Speech and Hearing, CRCSRE-Guwahati***. Participant assessment was conducted in virtual mode by RCI representatives (RCI 5) using the Slido platform, ensuring compliance with RCI protocols.

RCI APPROVED STATE LEVEL ONLINE CRE WEBINAROn

” Assessment tool for early identification for children with special needs”

Programme on 07.08.2025

PHOTO GALLERY



PROGRAMME COORDINATOR: MR KUNDAN KUMAR (CRR A81468)

The screenshot shows a mobile application interface for a Webex meeting. At the top, the status bar displays the time 10:30, battery level at 72%, and various connectivity icons. The app header features the Webex logo, a dropdown arrow, and icons for a user profile and a refresh action. Below the header, a notification bar states 'Viewing Debarshi Das's applications' with a circular profile picture. The main content area displays a presentation slide titled 'INTRODUCTION & FOUNDATIONS' with a sub-header 'Historical Context & Evolution of EI'. The slide text discusses the historical context of intellectual disabilities, mentioning ancient civilizations and the work of Jean-Jacques Rousseau, Jean-Marc Gaspard Itard, and Edouard Seguin. A small video thumbnail of a man is visible in the bottom right corner of the slide. The bottom of the screen shows a navigation bar with icons for back, forward, search, and other presentation controls.

PROGRAMME COORDINATOR: MR KUNDAN KUMAR (CRR A81468)