

**COASTAL ZONE MANAGEMENT AUTHORITY,
DAMAN & DIU**

O/O THE POLLUTION CONTROL COMMITTEE,
DD & DNH,
1ST FLOOR, UDYOG BHAWAN,
BHENSLORE, NANI DAMAN -396210.

Phone : 0260-2262524/2260974/2260804(Fax)/

E-mail : mspcc_dmn@pccdaman.info

No. CCF/DNH/2017/160/2017-18/ 203

Dated :- 10 /05/2018.

PUBLIC NOTICE

Sub : Objections/Suggestions on Draft CZMP Map of Diu- regarding.

Whereas as per the CRZ Notification S.O.19(E) dated 6th January, 2011, the Coastal Zone Management Authority of Daman & Diu have entrusted the work for the preparation of the Coastal Zone Management Plan Maps of Daman & Diu to National Centre for Sustainable Coastal Management (NCSCM), Chennai.


Whereas NCSCM, Chennai have prepared the Draft Coastal Zone Management Plan Maps of Daman & Diu as per the CRZ Notification -2011;

Whereas as per the guidelines of CRZ Notification, 2011, the Draft CZMPs prepared shall be given wide publicity for obtaining suggestions and objections, if any;

The interested persons can submit their responses /Objections/Suggestions to the Member Secretary, DDCZMA, O/o the Member Secretary, Pollution Control Committee, 1st floor Udyog Bhawan, Bhenslore, Nani Daman in writing on or before 15 days from the date of issue of this notice. The Places of availability of Draft CZMP Maps of Diu which is kept open to public are;

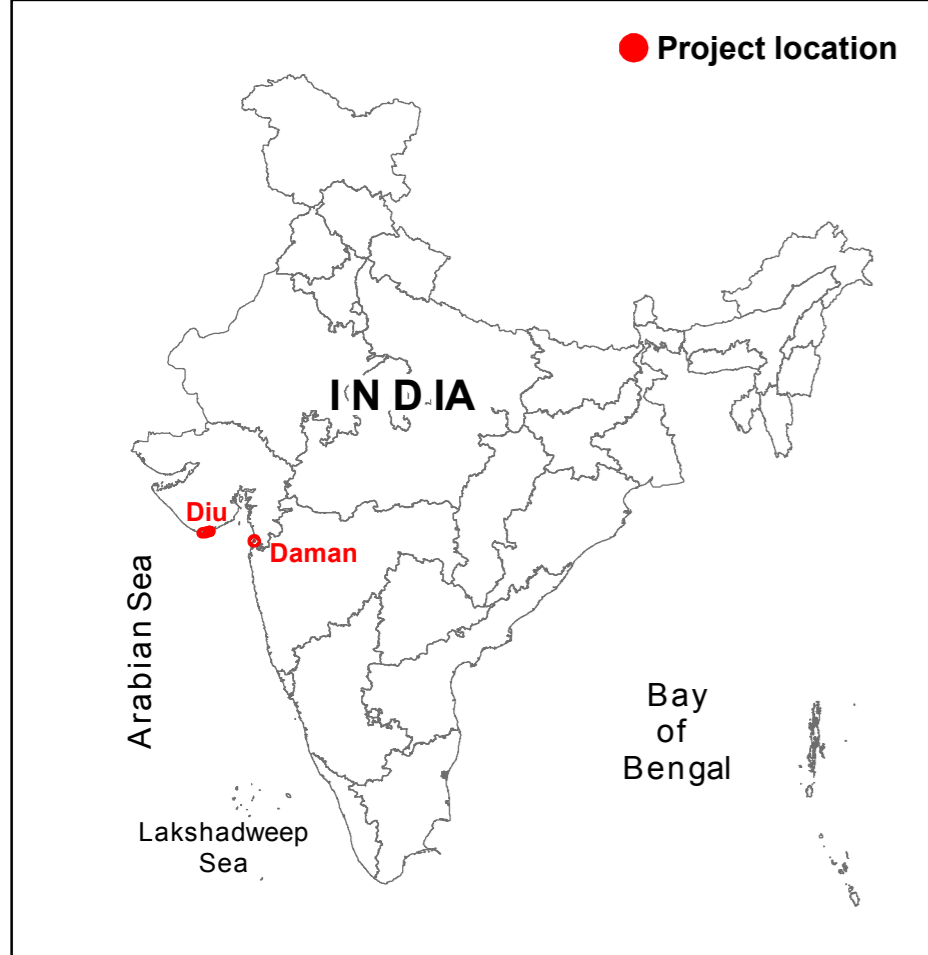
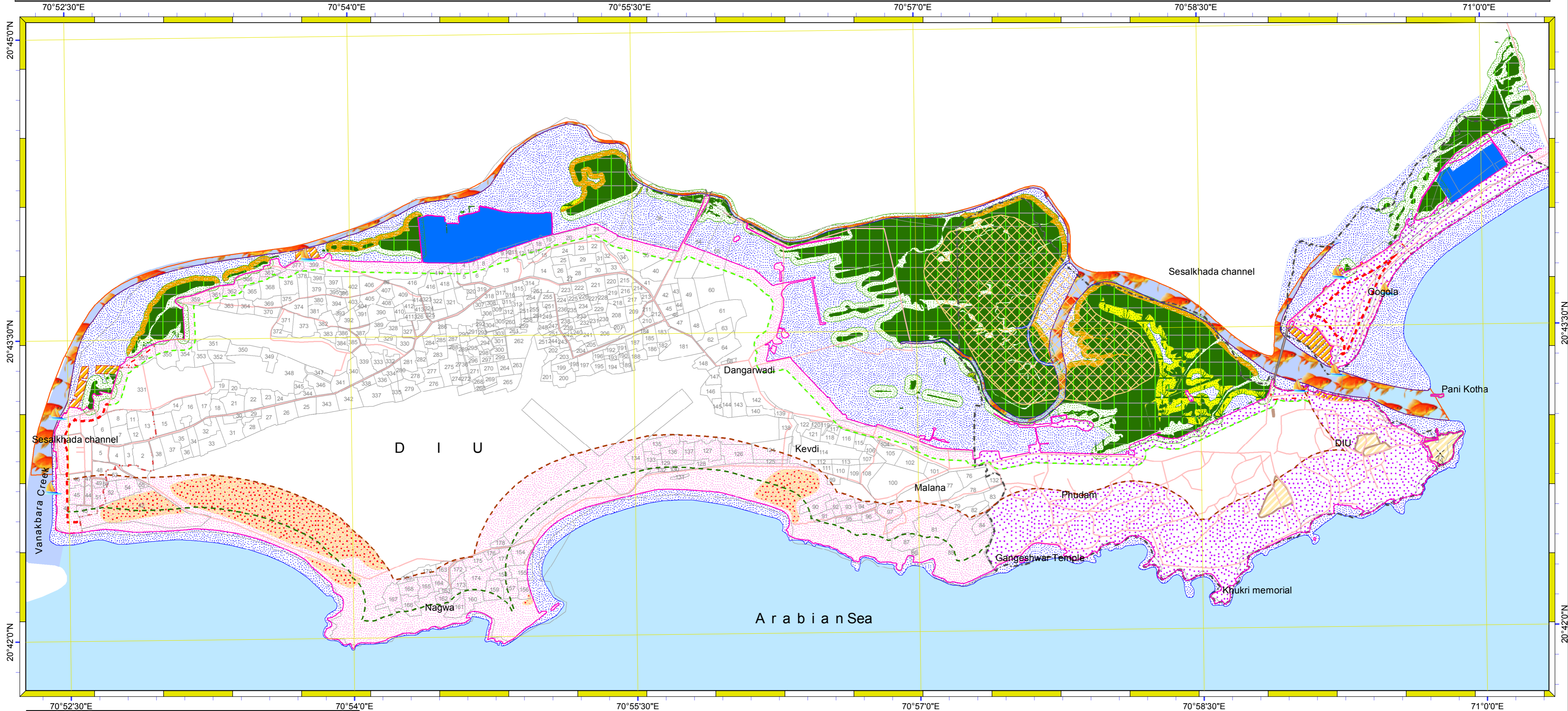
1. The Collector/District Magistrate, Diu.
2. The Chief Executive Officer, District Panchayat, Diu.
3. The Chief Officer, Diu Municipal Council, Diu
4. The Mamlatdar, office of the Mamlatdar, Collectorate, Diu
5. The Block Development Officer, Diu.
6. Sarpanches of All Village Panchayat, Diu.
7. The General Manager, District Industries Centre, Udyog Bhawan, Nani Daman.
8. The Chief Conservator of Forests/Chairman, PCC, DD & DNH, Secretariat, Moti Daman.
9. The Member Secretary, Pollution Control Committee, DD & DNH, Udyog Bhawan, Nani Daman.
10. The Deputy Director of Fisheries, Diu.
11. The Director of Education, Diu.
12. The Port Officer, Diu.
13. Commanding Officer, Coast Guard Air Station, Daman/Diu.

The soft copy of the Draft CZMP map of Daman/Diu are also available on the website of UT Administration of Daman & Diu www.daman.nic.in , www.diu.gov.in and PCC website www.pccdaman.info for wide publicity and objections/suggestions, if any


(Sandeep Kumar Singh)
Member Secretary,
DDCZMA/
Pollution Control Committee,
DD & DNH,
Daman

1. Copy forwarded alongwith the Draft CZMP map of Diu for wide publicity to all concerned.
2. PCC website.
3. The District Informatics Officer, NIC, Daman/Diu with a request to upload the notice with CZMP maps on the official website of Daman & Diu.
4. Office copy
5. Master file.

DRAFT CZMP MAP OF U.T. ADMINISTRATION OF DAMAN & DIU DIU



Legend

Data Provided: DDCZMA CRZ Lines

- Fish Landing Centre
- Municipal Boundary
- Survey Plots
- Fish breeding areas
- Fishing Village Boundary
- 100 m CRZ line for Fishing Villages
- 200 m CRZ line
- 500 m CRZ line
- CRZ line for River or Creek

Data Source: NCSCM

- Lighthouse
- High Tide Line
- Low Tide Line
- Road
- Fishing Jetty

CRZ CATEGORY CRZ - I

- Wild Life Protected Area (Fudam Bird Sanctuary) - CRZ IA
- Mangrove - CRZ IA
- 50 m Mangrove Buffer Zone - CRZ IA
- Archeological and Heritage site - CRZ IA
- Sand Dune - CRZ IA

- Mudflat - CRZ IA
- Salt Marsh - CRZ IA
- Inter Tidal Zone - CRZ IB
- Aquaculture Pond - CRZ IB

CRZ - II

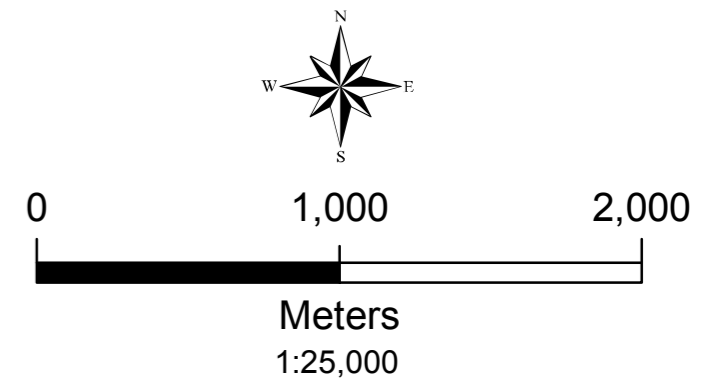
- CRZ landward of HTL CRZ II

CRZ - III

- CRZ landward of HTL CRZ III

CRZ - IV

- Water body - CRZ IVA
- Water body (Creek or River) - CRZ IVB

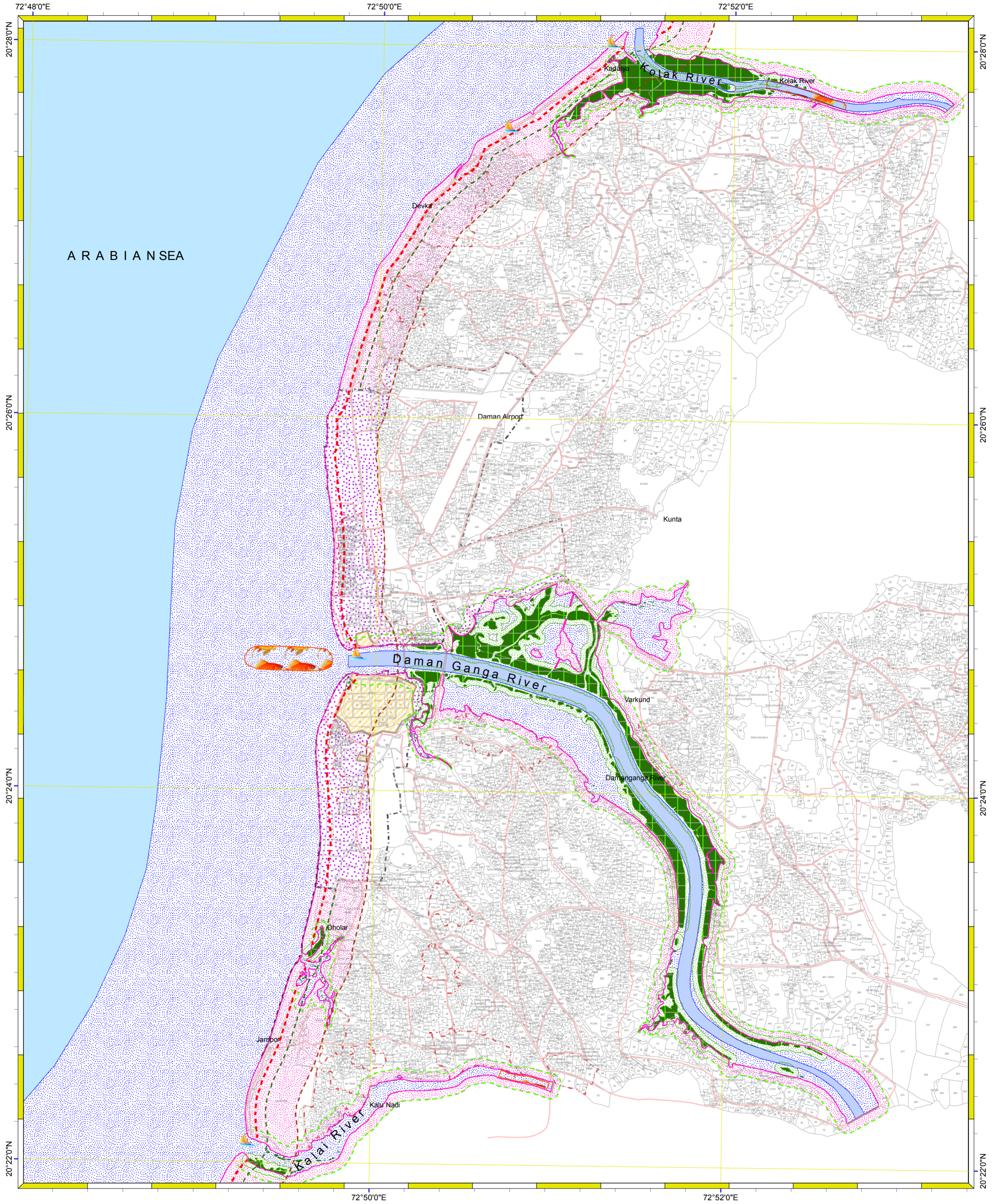


Prepared by
NCSCM
National Centre for Sustainable Coastal Management
(Ministry of Environment, Forest & Climate Change)
Chennai - 25

Prepared for
U.T. ADMINISTRATION OF DAMAN & DIU

DRAFT CZMP MAP OF U.T. ADMINISTRATION OF DAMAN & DIU

DAMAN



Legend

Data Provided: DDCZMA

- Fish Landing Centre
- Survey Plots
- Municipal Boundary
- Fish breeding areas
- Fishing Village Boundary

Data Source: NCSCM

- Lighthouse
- Road
- Seawall
- High Tide Line
- Low Tide Line

CRZ Lines

- 100 m CRZ line for Fishing Village
- 200 m CRZ line
- 500 m CRZ line
- CRZ line for River or Creek

CRZ CATEGORY

CRZ I

- Mangrove - CRZ IA
- 50M Mangrove Buffer - CRZ IA
- Salt Marsh - CRZ IA
- Archeological and Heritzage site - CRZ IA
- Inter Tidal Zone - CRZ IB

CRZ II

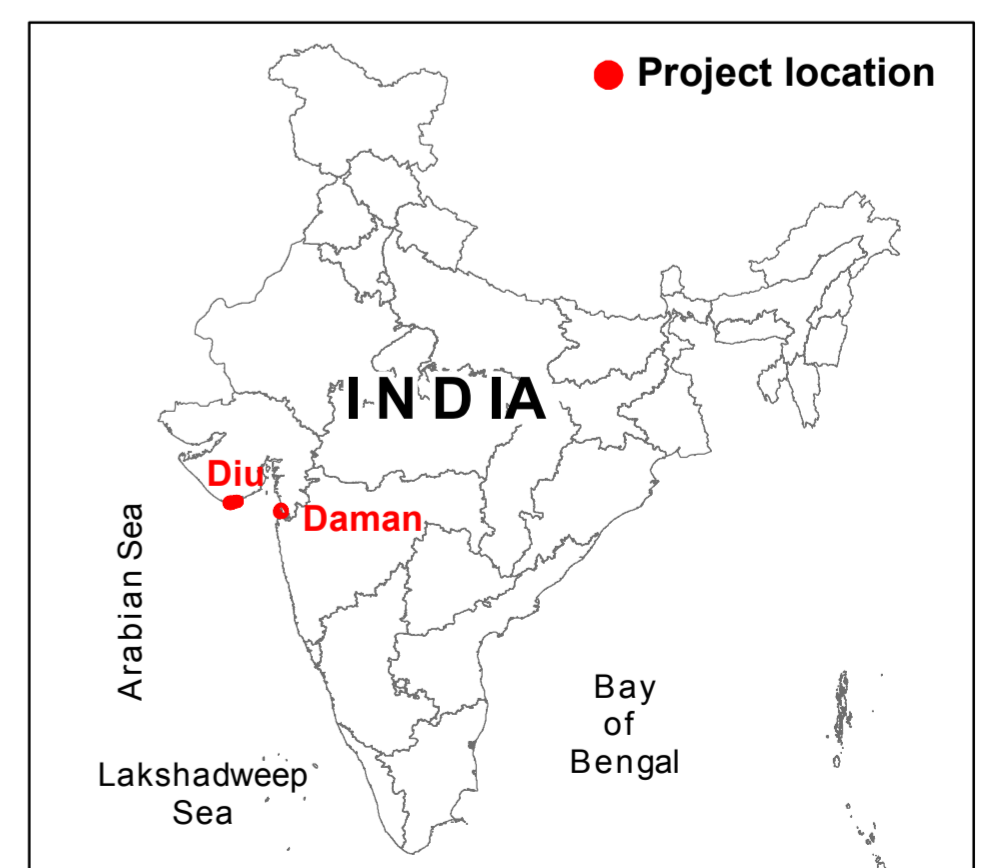
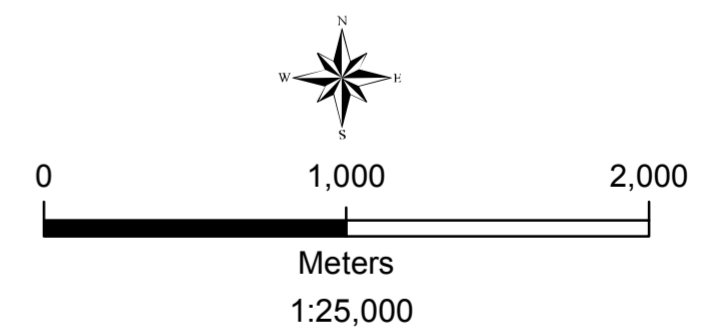
- CRZ landward of HTL CRZ II

CRZ III

- CRZ landward of HTL CRZ III

CRZ IV

- Waterbody - CRZ IVA
- Waterbody (River or Creek) - CRZ IVB



Prepared by

National Centre for Sustainable Coastal Management
 (Ministry of Environment, Forest & Climate Change)
 Chennai - 25

Prepared for
U.T. ADMINISTRATION OF DAMAN & DIU