

# COASTAL ZONE MANAGEMENT AUTHORITY, DAMAN & DIU

O/O THE POLLUTION CONTROL COMMITTEE,  
DD & DNH,  
1<sup>ST</sup> FLOOR, UDYOG BHAWAN,  
BHENSLORE, NANI DAMAN -396210.

Phone : 0260-2262524/2260974/2260804(Fax)/

E-mail : mspcc\_dmn@pccdaman.info

No. CCF/DNH/2017/160/2017-18/ 202

Dated :- 10/05/2018.

## PUBLIC NOTICE

Sub : Objections/Suggestions on Draft CZMP Map of Daman- regarding.

Whereas as per the CRZ Notification S.O.19(E) dated 6<sup>th</sup> January, 2011, the Coastal Zone Management Authority of Daman & Diu have entrusted the work for the preparation of the Coastal Zone Management Plan Maps of Daman & Diu to National Centre for Sustainable Coastal Management (NCSCM), Chennai.

Whereas NCSCM, Chennai have prepared the Draft Coastal Zone Management Plan Maps of Daman & Diu as per the CRZ Notification -2011;

Whereas as per the guidelines of CRZ Notification, 2011, the Draft CZMPs prepared shall be given wide publicity for obtaining suggestions and objections, if any;

The interested persons can submit their responses /Objections/Suggestions to the Member Secretary, DDCZMA, O/o the Member Secretary, Pollution Control Committee, 1<sup>st</sup> floor Udyog Bhawan, Bhenslore, Nani Daman in writing on or before 15 days from the date of issue of this notice. The Places of availability of Draft CZMP Maps of Daman which is kept open to public are;

1. The Collector/District Magistrate, Dholar Collectorate office, Moti Daman.
2. The Chief Executive Officer, District Panchayat, Moti Daman.
3. The Chief Officer, Daman Municipal Council, Moti Daman
4. The Mamlatdar, office of the Mamlatdar, Collectorate, Daman
5. The Block Development Officer, Dholar, Moti Daman.
6. Sarpances of All Village Panchayat, Daman
7. The General Manager, District Industries Centre, Udyog Bhawan, Nani Daman.
8. The Chief Conservator of Forests/Chairman, PCC, DD & DNH, Secretariat, Moti Daman.
9. The Member Secretary, Pollution Control Committee, DD & DNH, Udyog Bhawan, Nani Daman.
10. The Deputy Director of Fisheries, Daman/Diu.
11. The Director of Education, Daman/Diu.
12. The Port Officer, Daman/Diu.
13. Commanding Officer, Coast Guard Air Station, Daman.

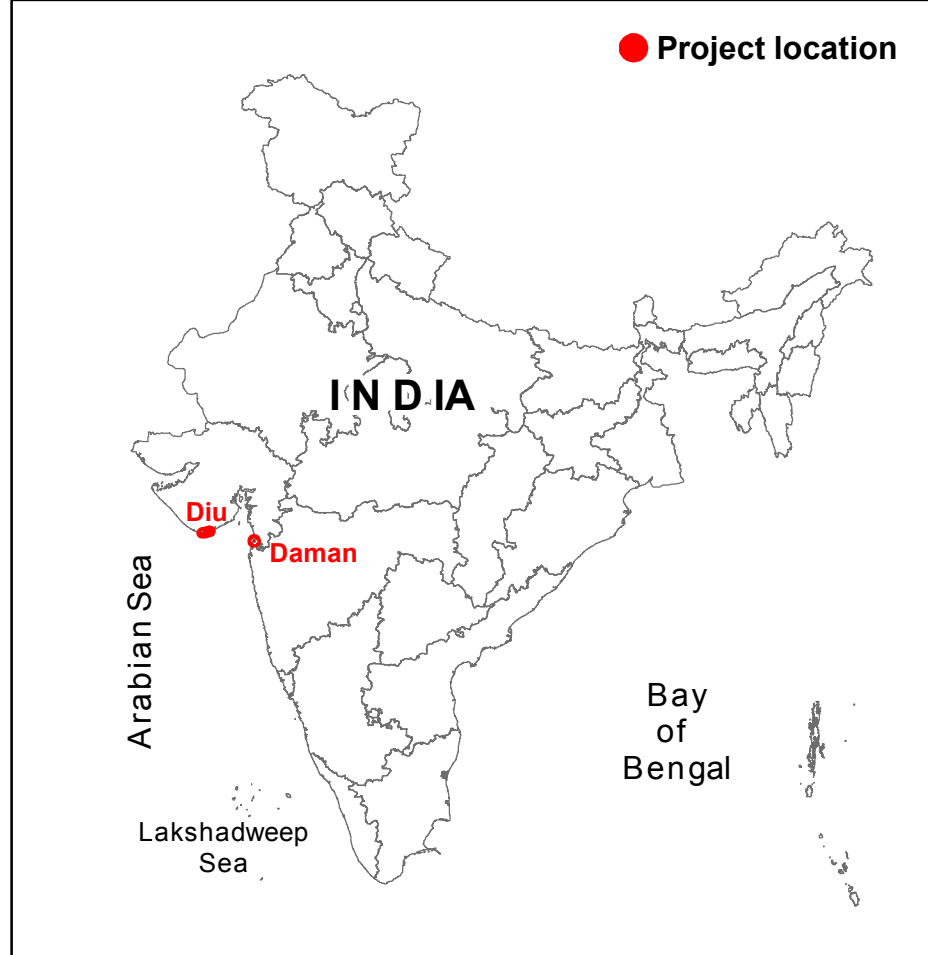
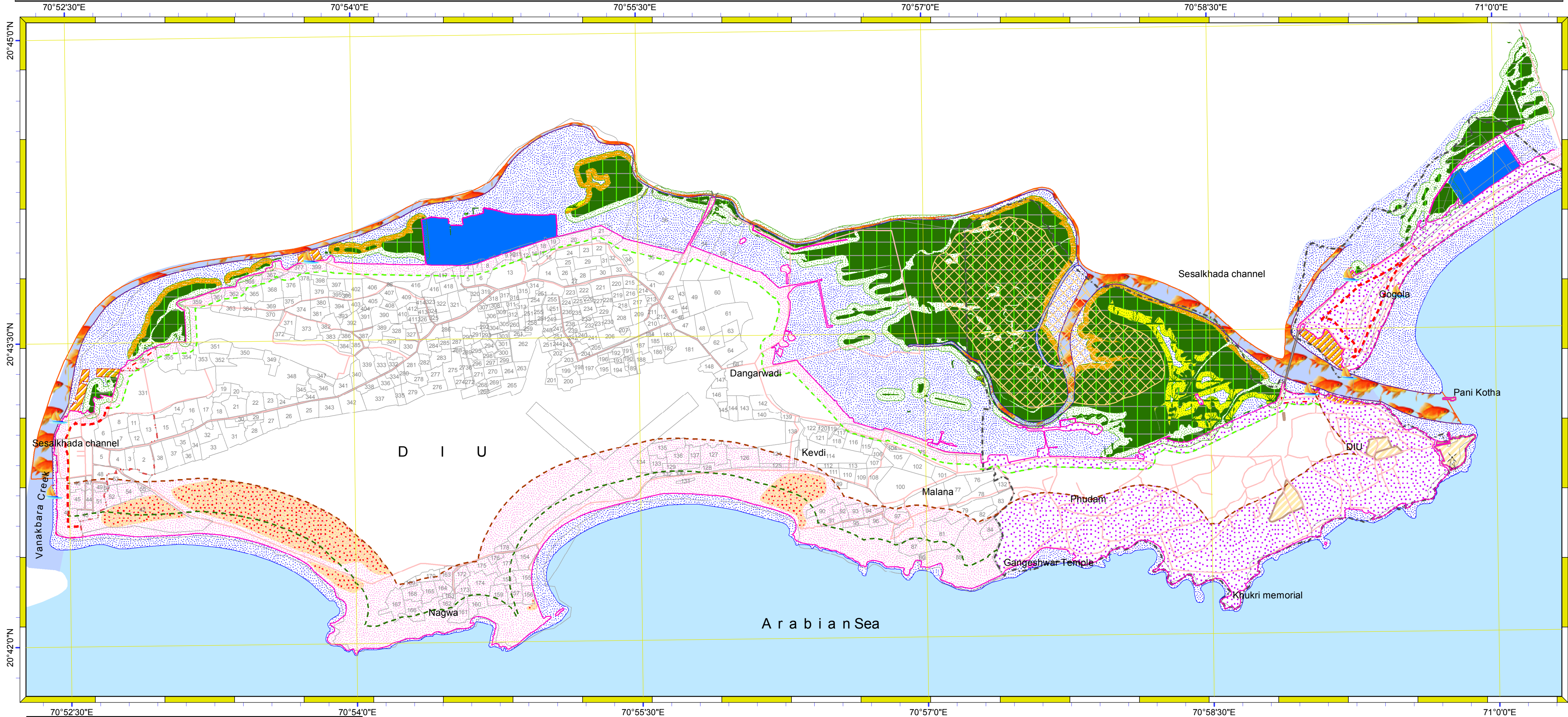
The soft copy of the Draft CZMP map of Daman/Diu are also available on the website of UT Administration of Daman & Diu [www.daman.nic.in](http://www.daman.nic.in) , [www.diu.gov.in](http://www.diu.gov.in) and PCC website [www.pccdaman.info](http://www.pccdaman.info) for wide publicity and objections/suggestions, if any.

  
(Sandeep Kumar Singh)  
Member Secretary,  
DDCZMA/  
Pollution Control Committee,  
DD & DNH,  
Daman

1. Copy forwarded alongwith the Draft CZMP map of Daman for wide publicity to all concerned.
2. PCC website.
3. The District Informatics Officer, NIC, Daman/Diu with a request to upload the notice with CZMP maps on the official website of Daman & Diu.
4. Office copy
5. Master file.



# DRAFT CZMP MAP OF U.T. ADMINISTRATION OF DAMAN & DIU DIU



### Legend

#### Data Provided: DDCZMA CRZ Lines

- Fish Landing Centre
- Municipal Boundary
- Survey Plots
- Fish breeding areas
- Fishing Village Boundary
- 100 m CRZ line for Fishing Villages
- 200 m CRZ line
- 500 m CRZ line
- CRZ line for River or Creek

#### Data Source: NCSCM

- Lighthouse
- High Tide Line
- Low Tide Line
- Road
- Fishing Jetty

#### CRZ CATEGORY CRZ - I

- Wild Life Protected Area (Fudam Bird Sanctuary) - CRZ IA
- Mangrove - CRZ IA
- 50 m Mangrove Buffer Zone - CRZ IA
- Archeological and Heritage site - CRZ IA
- Sand Dune - CRZ IA

- Mudflat - CRZ IA
- Salt Marsh - CRZ IA
- Inter Tidal Zone - CRZ IB
- Aquaculture Pond - CRZ IB

#### CRZ - II

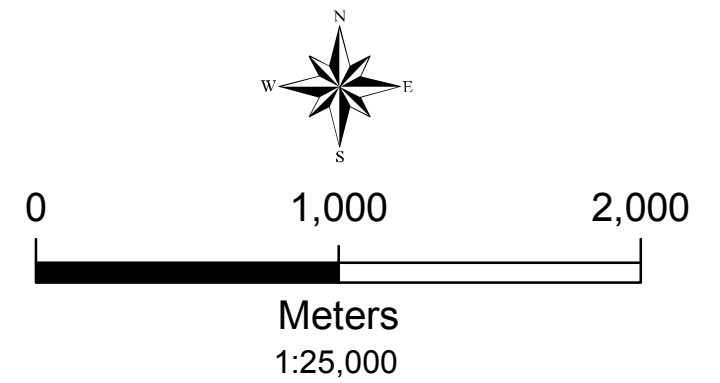
- CRZ landward of HTL CRZ II

#### CRZ - III

- CRZ landward of HTL CRZ III

#### CRZ - IV

- Water body - CRZ IVA
- Water body (Creek or River) - CRZ IVB



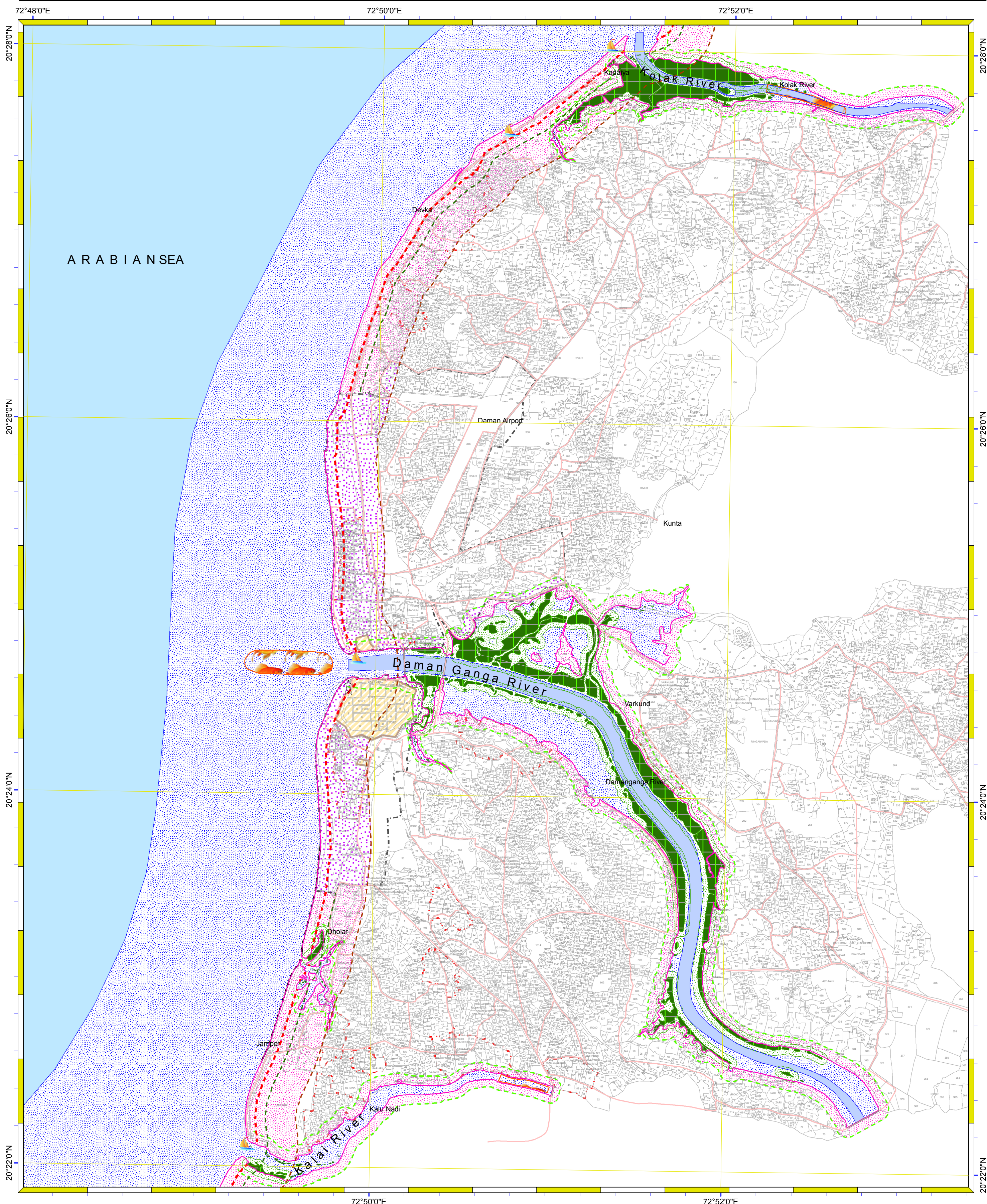
Prepared by  
**NCSCM**  
National Centre for Sustainable Coastal Management  
(Ministry of Environment, Forest & Climate Change)  
Chennai - 25

Prepared for  
**U.T. ADMINISTRATION OF DAMAN & DIU**



# DRAFT CZMP MAP OF U.T. ADMINISTRATION OF DAMAN & DIU

## DAMAN



### Legend

#### Data Provided: DDCZMA

- Fish Landing Centre
- Survey Plots
- Municipal Boundary
- Fish breeding areas
- Fishing Village Boundary

#### Data Source: NCSCM

- Lighthouse
- Road
- Seawall
- High Tide Line
- Low Tide Line

#### CRZ Lines

- 100 m CRZ line for Fishing Village
- 200 m CRZ line
- 500 m CRZ line
- CRZ line for River or Creek

#### CRZ CATEGORY

##### CRZ I

- Mangrove - CRZ IA
- 50M Mangrove Buffer - CRZ IA
- Salt Marsh - CRZ IA
- Archeological and Heritzage site - CRZ IA
- Inter Tidal Zone - CRZ IB

##### CRZ II

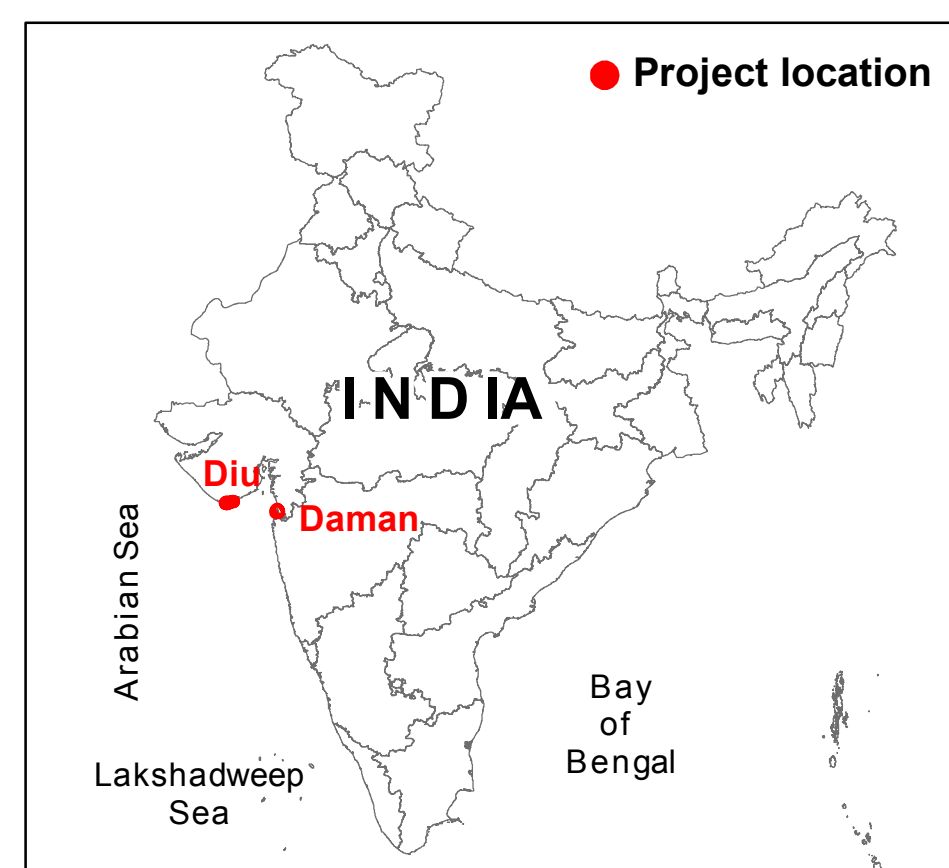
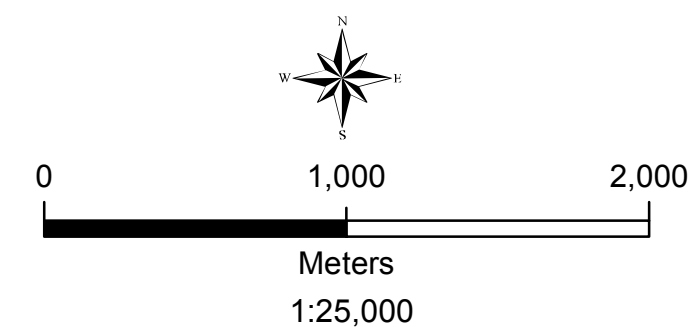
- CRZ landward of HTL CRZ II

##### CRZ III

- CRZ landward of HTL CRZ III

##### CRZ IV

- Waterbody - CRZ IVA
- Waterbody (River or Creek) - CRZ IVB



Prepared by  
  
**National Centre for Sustainable Coastal Management**  
 (Ministry of Environment, Forest & Climate Change)  
 Chennai - 25

Prepared for  
**U.T. ADMINISTRATION OF DAMAN & DIU**