

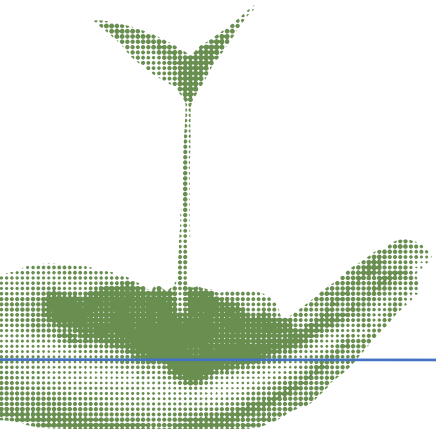


सत्यमेव जयते

नवीन एवं
नवीकरणीय ऊर्जा मंत्रालय
MINISTRY OF
**NEW AND
RENEWABLE ENERGY**

BIOMASS PROGRAMME

Immediate inspection as per revised Guidelines



Overall Status of Projects

Status of Application	No. of Applications
Total Sanctioned	118
Inspection Completed	48
Documents uploaded for Stage-2 on portal after inspection	32
Inspection completed but 2 nd Stage documents yet to be uploaded	16
Request received for closing of application	4
Request received for relocation of Plants relocation	2
Plants to be inspected	64*

* 64 = [Total Sanctioned (118) - Inspection Completed (48) - Request received for closing of application (4)- Request received for relocation of Plants relocation(2)]

State wise list of projects

State	Type of Project			Total	Pending Inspection	Inspection Agency
	Briquette	Pellet	Non-Bagasse (Co-gen)			
Andhra Pradesh	0	0	1	1	0	NA
Gujarat	12	3	0	15	15	GEDA/NIBE
Haryana	5	1	2	8	5	HAREDA/NIBE
Karnataka	1	0	0	1	0	NA
Madhya Pradesh	42	7	0	49	17	MPUVN/NIBE
Maharashtra	12	2	0	14	9	MEDA/NIBE
Punjab	0	2	4	6	2	PEDA/NIBE
Rajasthan	7	4	0	11	7	RRECL/NIBE
TAMIL NADU	2	0	1	3	2	TEDA/NIBE
Telangana	1	0	3	4	2	TGREDCO/NIBE
Uttar Pradesh	3	0	2	5	5	UPNEDA/NIBE
UTTARKHAND	0	0	1	1	0	NA
Total	85	19	14	118	64	

Projects Status

Status of Application	No. of Applications	Remarks
Documents uploaded for Stage-2 on portal	32	-
Inspection completed but 2 nd Stage documents yet to be uploaded	16	Issues: CTO, incomplete documents (Regular follow up by IREDA for early submission of documents by developers)
Plants requested for closing	4 Briquette Plants	<ul style="list-style-type: none"> i. SAPL Biofuel Pvt Ltd (Haryana): 3 TPH ii. Shree Gurukripa Biofuels (M.P.): 4 TPH iii. Kamadgiri Biofuel (M.P.): 9.9 TPH iv. Agroenergy Solutions (M.P.):3 TPH
Request received for relocation of Plants relocation	2 Briquette Projects	<ul style="list-style-type: none"> i. Reliance Industries: Requested for replacing 1 project with another project ii. Apaarshakti Bio Fuel Industries LLP : Change of location without prior information.

Plan of Inspection

- **July 2025:** HL Agro Pvt Ltd (4.8 MW), Non-bagasse Cogeneration Project on 30.07.2025, by UPNEDA/NIBE
- **Aug, 2025:** Rest 63 Projects are planned to be inspected in August, 2025
- **Developers are requested to submit inspection request immediately on email Id – abhishek.gupta27.nibe@nic.in
abhishek.gupta27@gov.in**

Need for revision in Biomass Scheme Guidelines



Objectives of the Programme

- To support setting up biomass Briquette, Pellet and Non-bagasse-based Co-generation projects.
- Utilizing surplus agricultural residue, provide additional income to farmers.
- Reducing crop residue burning in Delhi, Punjab, Haryana and NCR Districts of Rajasthan and UP.



Features of the Programme

- Scheme also complements the SAMARTH Mission of MoP with an aim to use up to 7 % biomass-based pellets in existing coal fired thermal power plants.

Revision of guidelines is proposed to promote the biomass sector, by relaxing some stringent conditions and for ease of doing business.

Clauses of Guidelines dropped /amended

Component	Clauses in Current Guidelines	To be read as
Briquette / Pellet Manufacturing Plants	Techno-economic Feasibility Report	This clause stands omitted
	Latest high-resolution photographs of the site (with time stamp) – At the time of initial application	
	EIA clearance (wherever applicable)	
	Copy of contract agreement for sale of briquettes / pellets for a minimum period of two years .	Copy of Offtake/Sale agreement for sale of briquettes / pellets is to be submitted.
	Details of SCADA/remote monitoring system installed by Plant.	Details of IoT based monitoring solution or undertaking to share the data of biomass briquette/pellet manufactured on quarterly basis.

Clarification on availing Capital Subsidy from other Central Government Ministry/Department

Clauses in Current Guidelines	To be read as
Central financial assistance from any other Ministry or department of the Central Govt. should not be claimed for proposed plant for which application has been submitted to this Ministry.	Applicant seeking capital subsidy from this Ministry for the proposed plant shall not claim capital subsidy from any other Ministry or Department of the Central Government for the same plant.

Resolving prior intimation of Commissioning

Clauses in Current Guidelines	To be read as
<p>After submission of application in the BioURJA portal, if a developer intends to commission the plant before in-principle approval to the proposal is accorded by MNRE, a prior intimation of commissioning of the project to the Implementing Agency is mandatory. However, in-principle approval of the project shall be subject to fulfilment of the eligibility conditions mentioned in this scheme guideline.</p>	<p>After submission of application in the BioURJA portal, if a developer commissions the plant, the developer has to update the status of the plant as commissioned on the BioUrja Portal.</p>

Amendment in Inspection period

Clauses in Current Guidelines	To be read as
<p>Performance Inspection:</p> <p>On successful commissioning of the project, inspection team is required to visit the plant for performance inspection. The performance inspection of the plant shall have to be carried out within 18 months from the date of commissioning, beyond which the “In-Principle” approval shall be cancelled except in those cases where reason(s) of delay in inspection is (are) beyond the control of developer. For such cases, an extension of suitable period over the original performance inspection period can be granted by Secretary, MNRE provided an application is made by the developer, with supporting documents, before the completion of original inspection period of 18 months as given above.</p>	<p>On successful commissioning of the project, inspection team is required to visit the plant for performance inspection. The performance inspection of the plant shall have to be carried out within 18 months from the date of commissioning or within 18 months from the date of issue of “In-Principle” approval, whichever is later. In case of delay in inspection where reason(s) of delay in inspection is (are) beyond the control of developer, for such cases, an extension of suitable period can be granted by Secretary, MNRE.</p>

Amendment in Inspection Methodology

Clauses in Current Guidelines	To be read as
<p>4.4 Performance Inspection:</p> <p>iii. Performance testing of Briquette/Pellet Manufacturing Plants would inter-alia imply the following:-</p> <p>(a) Operation of the plant at an average of 80% of rated capacity measured over a period of three consecutive days (taking average 16 hrs. per day as standard operating hours), and</p> <p>(b) Operation of the plant at an average of 70% of rated capacity measured over a period of three consecutive months (taking average 16 hrs. per day as standard operating hours).</p>	<p>4.4 Performance Inspection:</p> <p>iii & v:</p> <p>The Performance testing of Briquette/Pellet Manufacturing Plants would inter-alia imply the following: -</p> <p>Operation of the plant at an average of 80% of rated capacity measured over continuous period of 10 hrs. for eligibility to receive 100% CFA.</p>

Amendment in Inspection Methodology

Clauses in Current Guidelines	To be read as
<p>The Briquette/pellet manufacturing plant should fulfil the conditions mentioned in clause 4.4 (iii) (a) and clause (b) above to become eligible for full release of CFA. In case of any variation in fulfilment of the conditions of clause (b), following graded structure based on average capacity utilisation factor over a period of three months shall be used, for release of CFA:</p> <p>CUF \geq 70% - 100% 60% \leq CUF < 70% - 80% 50% \leq CUF < 60% - 60% CUF < 50% - 0%</p>	<p>In cases, where developer fails to operate the plant at minimum 80% of the rated capacity during performance inspection of the plant by the inspection agency, the below-mentioned pro-rata-based disbursement will be made based on the percentage output achieved. For example:</p> <p>$\geq 80\%$ CUF - 100% of eligible CFA If 73% CUF - CFA would be made on pro-rata basis i.e., $(100 \times 73) / 80 = 91.25\%$ of eligible CFA However, if the CUF < 50%, the % of CFA shall be 0%.</p>

Clause relating to CPCB

- Central Board of Pollution Control (CPCB), MoEFCC, has a Scheme for Pelletization (both non-torrefied and torrefied) wherein a **higher CFA for manufacturing pellets** for these regions compared to MNRE Biomass Scheme.
- Applicants applying on BioUrja portal for availing CFA for manufacturing Biomass Pellets (both non-torrefied and torrefied) from the NCT of Delhi, States of Punjab and Haryana and NCR Districts of Rajasthan and UP, would be **advised to avail CFA from either of the two Schemes.**
- The developer from these regions will have to submit a **duly notarized undertaking in original** (on a non-judicial stamp paper of Rs. 500/-)

Thanks