

Sanitation Needs for Persons with Multiple Disabilities



Doors:



✓ The toilet door should be either an outward opening door or two-way opening door or a sliding type and should provide a clear opening width of at least 900mm.

✓ Be provided with a horizontal pull-bar, at least 600mm long, on the inside of the door, located so that it is 130mm from the hinged side of the door and at a height of 1000mm.

- ✓ Two Way Opening Door
- ✓ Sliding Door
- ✓ No Threshold
- ✓ Pull Bar

Sanitation Needs for Persons with Multiple Disabilities

Gradient:

- ✓ The Minimum gradient of a ramp should not be steeper than 1:12.
- ✓ Landings at every 5 meters of ramp run Friction of Tiles
- ✓ Friction of Tiles:
 - Dry Area : 0.6 to 0.8
 - Wet Area : 1.5 & Above



National Institute for Empowerment of Persons with Multiple Disabilities (NIEPMD)			
Abstrat Tentative Estimate for Proposed Toilet for Disabled Persons			
Sl.No	Description of work	Amount in INR	
1	Construction of Toilet Building (2.2 M X 1.5M) - 3.30 Sqm	32,000.00	
2	Construction of Soak Pit	3,500.00	
3	Accessible Household Sanitation Facilities for Persons with Disabilities (WC, GRAB BAR, HAND RAILS.)	30,000.00	
4	Painting , Signages ,Etc.,	4,000.00	
Total		69,500.00	
Note			
1	The recommended dimensions of a disabled toilet room are; at least 2200mm deep x 1500 wide.		
2	The Estimate Amount may varies Based on the availability of Local Construction Material .		
3	Technical Specifciantion as followed by the CPWD/TNPWD Manual		

NIEPMD



“SWACHHATA CAMPAIGN 2.0”



National Institute For Empowerment of Persons with Multiple Disabilities (Divyangjan) (NIEPMD)

Dept. of Empowerment of Persons with Disabilities (Divyangjan)
Ministry of Social Justice & Empowerment, Govt. of India

**Receipt of National Award For
Best Accessible Website 2011 and
Outstanding Work in Creation of Barrier Free
Environment For Persons with Disabilities - 2012**

ECR, Muttukadu, Kovalam Post, Chennai 603 112, Tamil Nadu
Fax: 044-27472389 Tel: 044-27472104, 27472113, 27472046

For Services and Registration Enquiry Kindly Email to
niepmdreception@gmail.com

Website: www.niepmdtn.nic.in / E - mail: niepmd@gmail.com

Working Hours : Monday - Friday (9.00am - 5.30pm)
Holiday : Saturday, Sunday

&
All Central Govt, Holidays

Toll Free No: 1800 425 0345
Kiran Mental Health Helpline Toll Free No: 1800 599 0019

Special Campaign 2.0

Sanitation Needs for Persons with Multiple Disabilities



Better Hygiene Leads to

- ✓ Better Health
- ✓ Confidence
- ✓ Overall Growth

Signage



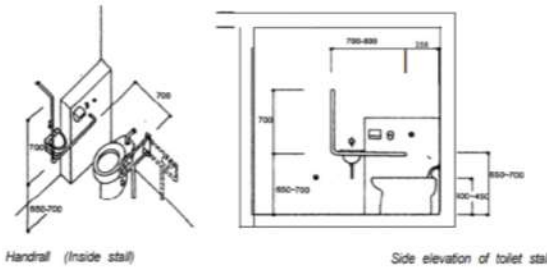
- ✓ Alpha Numerical Tactile Iconic Signage

Mirror

- ✓ Common Accessible Range 900mm - 1900mm

Sanitation Needs for Persons with Multiple Disabilities

Sketch



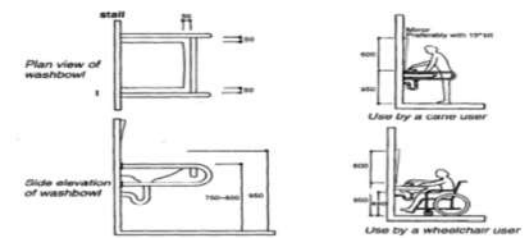
Water Closet



- ✓ It Should have a Clear Dimension of 750mm from the Front Edge of the Water Closet to the Rear Wall to Facilitate Side Transfer.
- ✓ The Top of the Water Closet Seat Should be 450 to 480mm from the Floor.

Sanitation Needs for Persons with Multiple Disabilities

Sketch



Wash Basin



- ✓ A Clear Maneuvering Space of 1800mm x 1800mm in Front of the Water Closet and Wash Basin in the Accessible Toilet Unit.
- ✓ A Mirror Installed in a way to have the Bottom Edge at a Height of not more than 1000mm from the Floor.
- ✓ Wash Basin with "D" Bars.