



GOVERNMENT OF HARYANA

**GROSS FIXED CAPITAL
FORMATION
IN
HARYANA**

2015-16

(BASE YEAR 2004-05)

**Issued by:
DEPARTMENT OF ECONOMIC AND STATISTICAL ANALYSIS
HARYANA
2018**

Publication No. 1193



GOVERNMENT OF HARYANA

GROSS FIXED CAPITAL FORMATION IN HARYANA

**2015-16
(BASE YEAR 2004-05)**

Issued by:
DEPARTMENT OF ECONOMIC AND STATISTICAL ANALYSIS
HARYANA
2018

PREFACE

Capital Formation is of paramount importance in a developing economy. It acts as a determinant of economic growth and serves as a yardstick for measurement of capital stock. The productive capacity of the economy depends to a large extent upon the Capital Formation i.e. more the capital accumulation, the higher would be the productive capacity of the economy.

The national level estimates of Capital Formation do not meet the requirements of the individual States due to regional variations. It has, therefore, necessitated the preparation of estimates of Capital Formation at State level. The State level estimates act as an important indicator in measuring the growth of productive potential of State economy. It is an important prerequisite for formulation of future developmental programmes for the State.

This report presents the estimates of Gross Fixed Capital Formation of Haryana at both current and constant (2004-05) prices for the year 2015-16. For preparation of the estimates of Gross Fixed Capital Formation, the standard methodology suggested by the Central Statistics Office, New Delhi with suitable modifications, wherever necessary, has been followed. It is hoped that the planners, economists, administrators and research scholars would find the information contained in the report quite useful for having an overview of the State's economy and for planning and formulation of developmental programmes and taking policy decisions.

This report has been prepared by Smt. Rani, Research Officer with the help of Sh. Manphool Singh, Sh. Bhupender, Ms. Mini Nanda, Assistant Research Officers and Sh. Mahesh Kumar, Junior Scale Stenographer under the guidance of Sh. Randhir Singh Kamboj, Deputy Director and the overall supervision of Dr. Rajvir Bhardwaj, Additional Director.

I acknowledge my sincere thanks to the officers of Central Statistics Office, New Delhi for their valuable co-operation and guidance in estimating Capital Formation in the State. The assistance extended by other departments/organizations and District Statistical Offices in furnishing the requisite data for preparation of the estimates is also acknowledged.

Panchkula
Dated: 21/08/2018

Dr. R. S. Malhan
Director, Department of Economic &
Statistical Analysis, Haryana.

Executive Summary

The estimates of Capital Formation are of considerable importance in the context of planning and economic development. These estimates throw light on the addition to the capital base of the economy and subsequent change in the modes and capacity of production. The higher the rate of Capital Formation, the higher would be the rate of growth in National/State Product. Capital Formation is defined as that part of country's current output and imports which is not consumed or exported during the accounting period, but is set aside as an addition to its stock of capital goods. Total Capital Formation can be broadly classified into Gross Fixed Capital Formation (GFCF) and change in stock of raw materials, semi-finished and finished goods.

The estimates of Capital Formation can be prepared by following any of the three approaches i) Production or commodity flow approach ii) Savings and flow of funds approach iii) Expenditure approach. At the State level, the estimates of Capital Formation are prepared by following the expenditure approach as the other two approaches are not feasible at present. Similarly, the estimates of change in stock can not be prepared at the State level due to non-availability of data. Therefore, the Department of Economic & Statistical Analysis, Haryana prepares the estimates of State GFCF only.

The estimates of GFCF at the State level are being worked out i) by industry of use i.e. separately for all the thirteen sectors of economy ii) by type of institutions i.e. for public and private sectors iii) by type of assets i.e. separately for buildings, roads and bridges, other constructions, plant and machinery, transport equipments and other equipments (including furniture and fixtures). These estimates are prepared by adopting the standard methodology as suggested by the Central Statistics Office, New Delhi. At present, the estimates of GFCF in the State are being prepared at both current and constant prices in the series with base year 2004-05.

At current prices, the total GFCF of the State has been estimated at ₹ 71116.43 crore during the year 2015-16 as against ₹ 65357.49 crore during the year 2014-15 resulting in an increase of 8.8 percent. Similarly, at constant prices, the total GFCF has been estimated at ₹ 38851.41 crore during the year 2015-16 as against 36158.17 crore during the year 2014-15 resulting in an increase of 7.4 percent.

The composition of GFCF reveals that the primary sector comprising agriculture, forestry, fishing and mining sectors has contributed 12.4 percent in the total GFCF at constant prices in 2015-16. The secondary sector consisting of manufacturing, construction and electricity, gas & water supply sectors has contributed 53.1 percent. The tertiary sector which consists of trade, hotels & restaurant, transport, storage, communication, banking, real estate, ownership of dwelling & business services, public administration and other services has contributed 34.5 percent in total GFCF in 2015-16. It shows that secondary sector has contributed maximum to the State GFCF followed by tertiary and primary sectors.

The estimates of GFCF by type of institutions at constant prices during the year 2015-16 shows that public sector has contributed 33.05 percent and private sector has contributed 66.95 percent in the total GFCF of the State.

A look at GFCF by type of assets at constant prices during the year 2015-16 reveals that construction of buildings has contributed 35.7 percent in total GFCF of the State. Road and bridges, other construction, plant and machinery and transport equipments contributed 3.5, 7.6, 51.0 and 2.2 percent, respectively. It shows that the contribution from plant and machinery in the total GFCF is the highest followed by buildings, other construction, roads and bridges and transport equipments.

CONTENTS

Sr. No.	Chapter/Description	Page No.
1	2	3
PART - I		
1.	Introduction	1-5
2.	Methodology	6-17
3.	Overview of Gross Fixed Capital Formation estimates	18-19
PART - II		
4.	Tables & Charts	21-88
4.1	Estimates of Gross Fixed Capital Formation in Haryana by Industry of Use at Current Prices	21
4.2	Estimates of Gross Fixed Capital Formation in Haryana by Industry of Use at Constant (2004-05) Prices	22
	Chart-Estimates of Gross Fixed Capital Formation in Haryana	23
	Chart-Composition of Gross Fixed Capital Formation in Haryana by Broad Sectors at Current prices	25
	Chart-Composition of Gross Fixed Capital Formation in Haryana by Broad Sectors at Constant (2004-05) prices	27
4.3	Estimates of Gross Fixed Capital Formation in Haryana by type of Institutions at Current Prices	29
	Chart-Contribution of Public and Private Sectors in Gross Fixed Capital Formation at Current Prices	31
4.4	Estimates of Gross Fixed Capital Formation in Haryana by type of Institutions at Constant (2004-05) Prices	33
	Chart- Contribution of Public & Private Sectors in Gross Fixed Capital Formation at Constant (2004-05) Prices	35
4.5	Estimates of Gross Fixed Capital Formation in Haryana by type of Assets at Current Prices	37
	Chart-Composition of Gross Fixed Capital Formation in Haryana by type of Assets at Current Prices	39
4.6	Estimates of Gross Fixed Capital Formation in Haryana by type of Assets at Constant (2004-05) Prices	41
	Chart- Composition of Gross Fixed Capital Formation in Haryana by type of Assets at Constant (2004-05) Prices	43

Sr. No.	Chapter/Description	Page No.
1	2	3
	4.7 Composition of Gross Fixed Capital Formation in Haryana by Industry of Use at Current Prices	45
	4.8 Composition of Gross Fixed Capital Formation in Haryana by Industry of Use at Constant (2004-05) Prices	46
	4.9 Percentage Increase/Decrease over the Previous Year in Gross Fixed Capital Formation in Haryana by Industry of Use at Current Prices	47
	4.10 Percentage Increase/Decrease over the Previous Year in Gross Fixed Capital Formation in Haryana by Industry of Use at Constant (2004-05) Prices	48
	4.11 Estimates of Gross Fixed Capital Formation in Haryana by Industry of Use for 2004-05 at Current Prices	49
	4.12 Estimates of Gross Fixed Capital Formation in Haryana by Industry of Use for 2005-06 at Current Prices	50
	4.13 Estimates of Gross Fixed Capital Formation in Haryana by Industry of Use for 2005-06 at Constant Prices	51
	4.14 Estimates of Gross Fixed Capital Formation in Haryana by Industry of Use for 2006-07 at Current Prices	52
	4.15 Estimates of Gross Fixed Capital Formation in Haryana by Industry of Use for 2006-07 at Constant (2004-05) Prices	53
	4.16 Estimates of Gross Fixed Capital Formation in Haryana by Industry of Use for 2007-08 at Current Prices	54
	4.17 Estimates of Gross Fixed Capital Formation in Haryana by Industry of Use for 2007-08 at Constant (2004-05) Prices	55
	4.18 Estimates of Gross Fixed Capital Formation in Haryana by Industry of Use for 2008-09 at Current Prices	56
	4.19 Estimates of Gross Fixed Capital Formation in Haryana by Industry of Use for 2008-09 at Constant (2004-05) Prices	57
	4.20 Estimates of Gross Fixed Capital Formation in Haryana by Industry of Use for 2009-10 at Current Prices	58
	4.21 Estimates of Gross Fixed Capital Formation in Haryana by Industry of Use for 2009-10 at Constant (2004-05) Prices	59
	4.22 Estimates of Gross Fixed Capital Formation in Haryana by Industry of Use for 2010-11 at Current Prices	60
	4.23 Estimates of Gross Fixed Capital Formation in Haryana by Industry of Use for 2010-11 at Constant (2004-05) Prices	61

Sr. No.	Chapter/Description	Page No.
1	2	3
	4.24 Estimates of Gross Fixed Capital Formation in Haryana by Industry of Use for 2011-12 at Current Prices	62
	4.25 Estimates of Gross Fixed Capital Formation in Haryana by Industry of Use for 2011-12 at Constant (2004-05) Prices	63
	4.26 Estimates of Gross Fixed Capital Formation in Haryana by Industry of Use for 2012-13 at Current Prices	64
	4.27 Estimates of Gross Fixed Capital Formation in Haryana by Industry of Use for 2012-13 at Constant (2004-05) Prices	65
	4.28 Estimates of Gross Fixed Capital Formation in Haryana by Industry of Use for 2013-14 at Current Prices	66
	4.29 Estimates of Gross Fixed Capital Formation in Haryana by Industry of Use for 2013-14 at Constant (2004-05) Prices	67
	4.30 Estimates of Gross Fixed Capital Formation in Haryana by Industry of Use for 2014-15 at Current Prices	68
	4.31 Estimates of Gross Fixed Capital Formation in Haryana by Industry of Use for 2014-15 at Constant (2004-05) Prices	69
	4.32 Estimates of Gross Fixed Capital Formation in Haryana by Industry of Use for 2015-16 (P) at Current Prices	70
	4.33 Estimates of Gross Fixed Capital Formation in Haryana by Industry of Use for 2015-16 (P) at Constant (2004-05) Prices	71
	4.34 Estimates of Gross Fixed Capital Formation in Haryana by All Institutions of Public Sector at Current Prices	72
	4.35 Estimates of Gross Fixed Capital Formation in Haryana by All Institutions of Public Sector at Constant (2004-05) Prices	73
	4.36 Estimates of Gross Fixed Capital Formation in Haryana by All Institutions of Private Sector at Current Prices	74
	4.37 Estimates of Gross Fixed Capital Formation in Haryana by All Institutions of Private Sector at Constant (2004-05) Prices	75
	4.38 Estimates of Gross Fixed Capital Formation in Haryana by All Institutions of Public Administration at Current Prices	76
	4.39 Estimates of Gross Fixed Capital Formation in Haryana by All Institutions of Public Administration at Constant (2004-05) Prices	77
	4.40 Estimates of Gross Fixed Capital Formation in Haryana by All Institutions of Departmental Enterprises at Current Prices	78

Sr. Chapter/Description		Page
1	2	No.
1	2	3
4.41	Estimates of Gross Fixed Capital Formation in Haryana by All Institutions of Departmental Enterprises at Constant (2004-05) Prices	79
4.42	Estimates of Gross Fixed Capital Formation in Haryana by All Institutions of Non-Departmental Enterprises at Current Prices	80
4.43	Estimates of Gross Fixed Capital Formation in Haryana by All Institutions of Non-Departmental Enterprises at Constant (2004-05) Prices	81
4.44	Percentage of Gross Fixed Capital Formation to Gross State Domestic Product of Haryana by Industry of Use at Current Prices at Current Prices.	82
4.45	Percentage of Gross Fixed Capital Formation to Gross State Domestic Product in Haryana at Current Prices	83
4.46	Percentage of Gross Fixed Capital Formation to Gross State Domestic Product in Haryana and All India at Current Prices	84
	Chart-Percentage of Gross Fixed Capital Formation to Gross State Domestic Product in Haryana at Current Prices	86
	Abbreviations used in the Publication	88

INTRODUCTION

Capital is the most important factor of production particularly in a developing economy. The higher the rate of Capital Formation, the higher would be the rate of growth in National Product. Therefore, Capital Formation becomes the major determinant of economic growth.

The estimates of Capital Formation are of considerable importance in the context of planning and economic development. These estimates throw light on the addition to the capital base of the economy and consequent change in the modes and capacity of production. The estimates of Capital Formation are among the important statistics required for determining and judging the policy decisions in resource mobilization and allocation of resources and for assessing the growth potential of the economy. Domestic Capital Formation is defined as that part of country's current output and imports which is not consumed or exported during the accounting period but is set aside as an addition to its stock of capital goods. Net Capital Formation is distinguished from Gross Capital Formation in the sense that it is measured after allowances are made for consumption of fixed capital which includes unforeseen obsolescence and accidental damages to the extent provided by the enterprises. Total Capital Formation can be broadly classified into Gross Fixed Capital Formation and change in stock of raw materials, semi-finished and finished goods.

Gross Fixed Capital Formation (GFCF) consists of additions to the assets of producers of tangible reproducible goods which have an expected life time of use of one year or more. The producers in question may be industries, producers of government services and producers of private non-profit services to households. The capital goods may include (i) durable goods acquired by producers during the accounting period (ii) improvements and alterations made in durable goods for extending their expected life span or their productivity (iii) all types of constructions, alterations and repair of buildings, highways, streets, bridges, culverts, railroad beds, railroads, subways, airports, parking areas, dams, drainages, wells and other irrigation sources, water and power projects, communication systems such as telephone and telegraph lines, land reclamations, bundings and other land improvements and planting and cultivating new orchards. The value of increment in

livestock during the accounting period is also taken into account. The natural endowments representing durable goods like land, mineral deposits, etc. and classified as non-producible tangible assets are not included. However, dealer's margin, service charges and other transfer costs in the transactions of such assets form part of Capital Formation. The construction works and durable goods which are meant primarily for military purposes are excluded. Outlays on new constructed dwellings (either by households or industries) and expenditure on major improvements and alterations of residential buildings form a part of Fixed Capital Formation, while the purchase of durable goods by households is not treated as Capital Formation. The expenditure incurred on invisible assets such as patents, good-will, health, research, education, improvements in technology and productivity of human capital are excluded from the scope of Capital Formation.

Similarly, expenditure incurred on current repairs and maintenance to keep the fixed assets in proper working order is also not classified as Capital Formation. However, capital repairs consisting of significant alterations and additions or replacement of parts of fixed assets having an expected lifetime of use of one year or more and involving substantial outlays are to be taken into account. Such capital outlays on repairs are incurred to enhance the life and productivity of capital assets.

There is no problem of measurement of Capital Formation in case of resident industries located within the State boundaries. However, in case of organized enterprises both in public and private sectors having activities spread over more than one State and also in case of transportable fixed assets operating in several States, there are problems of identification and measurement in the context of State Domestic Capital Formation. Transportable fixed assets owned by State Enterprises pose no problem as these form a part of the Capital Formation of the State to which these assets belong. However, in case of Central Enterprises like Railways, Indian Airlines etc. transportable fixed assets are not taken into account.

The estimates of GFCF of the State are being worked out by (i) industry of use (ii) type of assets and (iii) type of institutions at both current and constant prices as per the methodology suggested by the Central Statistics Office, New Delhi.

GFCF by industry of use:

The economy has been divided into thirteen sectors for estimation of GFCF by industry of use. These thirteen sectors are as under:-

1. Agriculture
2. Forestry
3. Fishing
4. Mining & Quarrying
5. Manufacturing
 - 5.1 Registered
 - 5.2 Unregistered
6. Electricity, Gas and Water Supply
7. Construction
8. Trade, Hotels and Restaurants
9. Transport, Storage and Communication.
 - 9.1 Railways
 - 9.2 Transport by Other Means
 - 9.3 Storage
 - 9.4 Communication
10. Banking and Insurance
11. Real Estate, Ownership of Dwellings and Business Services (only residential building part).
12. Public Administration
13. Other Services

These thirteen sectors have been arranged into 3 broad groups, i.e. primary, secondary and tertiary sectors. The primary sector comprises Agriculture & Allied Activities, Forestry, Fishing and Mining industries. The secondary sector includes Manufacturing, Construction, Electricity, Gas and Water Supply sectors. The tertiary sector consists of Trade, Hotels & Restaurants, Transport, Storage & Communication, Banking & Insurance, Real Estate, Ownership of Dwellings, etc., Public Administration and Other Services sectors.

GFCF by type of institutions

The institution-wise break up has got two main segments i.e. Public sector and Private sector. The public sector has been further segregated into Public Administration, Departmental Enterprises and Non-departmental Enterprises. Public Administration has further three parts i.e. Central Government, State Government and Local Bodies. Departmental Enterprises has been classified into Central and State Government enterprises. Non-departmental Enterprises has also been classified into central and State Government enterprises. Both central and State Government enterprises of non-departmental enterprises have been further categorised into Non-financial and financial enterprises.

GFCF by type of assets

For compiling the GFCF estimates by type of assets, fixed assets have been categorized into six items viz. (i) buildings (ii) roads and bridges (iii) other

construction (iv) plant and machinery (v) transport equipments and (vi) other equipments (including furniture and fixtures). The details are as under:-

1. Buildings:- The Value of work put in place on the construction of buildings meant entirely or primarily for dwellings and expenditure on construction of buildings meant entirely or primarily for industrial or commercial use such as buildings for factories, warehouses, offices, stores, hotels and restaurants, garages, farm houses, education, recreation, construction activity and similar other purposes including outlays on major alterations and additions to these buildings are to be taken as Capital Formation. It also includes outlays on internal paintings of new buildings and installation of new permanent fixtures which are integral and immovable parts of structures such as fixed central heating, air conditioning, lighting, plumbing and water supply facilities and all other fixed equipments customarily installed before the dwellings are occupied. However, repairs and replacements of worn out or damaged fixed equipments and fixtures are excluded. In the cases where the price of land is not available separately from the cost of building, eighty percent of the total expenditure is taken as expenditure on buildings. It also includes the expenditure given under the head "work in progress" but only in those cases where it is specifically mentioned that work in progress relates to building construction.

2. Roads and Bridges: - The expenditure incurred on construction works of roads and bridges has been taken as capital expenditure under this category.

3. Other Construction:- The expenditure on other construction works such as drainage works, sewerage, car parking facilities, water and power projects, dams, railroads, streets, sewers, sub-ways and tunnels, harbours, piers and other harbour facilities, airports, pipe lines, oil wells, canals, water ways, athletic fields, electricity transmission lines, gas main pipes, telephone and telegraph lines etc. is covered under other construction. It also includes outlays on land reclamation and land clearance, irrigation and flood control projects including dams and dikes and clearance and afforestation of timber tracts and forests. The expenditure incurred on planting and cultivating of those crops on orchards, rubber plantations and other new holdings of fruit bearing and sap bearing plants which take more than one year to become productive is also included under it.

4. Plant and Machinery: - It covers the expenditure incurred on acquisition of new power generating machinery, agricultural machinery, implements, industrial

machinery, metal working machinery, cranes, tractors, forklifts equipments, etc. The value of additions less disposal of breeding stock, draught animals, dairy cattle, sheep, lambs etc. have also been covered under plant and machinery.

5. Transport Equipments:- It covers the expenditure incurred on transport equipments both mechanized as well as non-mechanised viz. cycles, cycle rickshaws, auto cars, buses, trucks, taxies, etc.

6. Other Equipments: - The assets which could not be classified under any of the previous categories have been placed under this head. It covers expenditure made on furniture and fixtures viz. tables, chairs, almirahs, racks, wooden partitions etc. The expenditure on office equipments and small tools used by professionals have also been included under this head.

The estimates of GFCF at constant prices have been worked out by applying various price deflators for different items. The estimates of expenditure made on buildings have been deflated with the help of index of cost of construction of building materials viz. bricks, cement, steel, timber and wages paid to construction workers/labourers. The weights assigned to building material and wage rates have been supplied by the CSO. In case of roads and bridges, weighted average index based on the price of bricks, bitumen and unskilled labourers has been used to arrive at estimates at constant prices. The estimates of expenditure made on other construction have been deflated with the weighted average index of bricks, steel, cement and wage rates of skilled and unskilled workers. In the absence of availability of price indices of plant and machinery at State level, the wholesale price index of machinery and machine tools available from the RBI Bulletin has been used to compile the estimate at constant prices. In case of transport equipments, the wholesale price index of transport equipments available from the RBI Bulletin has been used for arriving at estimates at constant prices. In case of other equipments, the wholesale price index of steel furniture has been used for compiling the estimates at constant prices.

METHODOLOGY

Total capital formation can be broadly classified into (i) fixed capital formation and (ii) changes in stocks of raw material, semi-finished and finished goods. Gross Fixed Capital Formation is measured by the total value of the (i) gross fixed capital formation (ii) changes in inventories and (iii) acquisitions less disposals of valuables. The estimates of Capital Formation can be prepared by adopting either of the three approaches (i) production or commodity flow approach (ii) saving and flow of funds approach (iii) expenditure approach.

(i) Production or commodity flow approach: In this approach, the estimates for the entire country/state/regional economy is prepared on the basis of availability of commodities used in capital formation by type of assets i.e. construction, machinery and equipments.

(ii) Savings and flow of funds approach: In this approach, the estimates can be prepared on the basis of finances available for capital formation i.e. saving and flow of funds from other States and rest of the world.

(iii) Expenditure Approach: In this approach, the expenditure incurred on type of assets namely, construction and machinery is estimated by industry of use to arrive at GFCF estimates.

The estimates of capital formation by adopting the flow of funds approach is comparatively easier for the country as a whole than for the individual States. It is difficult to adopt the commodity flow approach or flow of funds approach at the State level because the data on production and imports and exports of capital goods relating to the domestic boundaries of the State and the data on inflow of capital from outside the State and vice versa is not available. The estimates at the State level are, therefore, being prepared by following the expenditure approach. Similarly, the estimates of change in stock can not be prepared at the State level due to non-availability of data and open boundaries of the States. Thus, State's Regional Account Committee (RAC) has also recommended that the States should concentrate their efforts to prepare the estimates of GFCF only. Therefore, the Department of Economic & Statistical Analysis, Haryana also prepares the State estimates of GFCF only. The estimates of GFCF for each sector are prepared separately for public and private sectors and then for buildings, roads and bridges,

other construction, plant and machinery, transport equipments and other equipments separately under public and private parts.

The detailed methodology followed for preparing the GFCF estimates for all thirteen sectors of the State economy is given below:-

1. Agriculture

This sector covers the capital formation from the activities of both crop husbandry and animal husbandry.

(a) Public Sector: Public sector has been divided into three parts viz. Public Administration, Departmental Enterprises and Non-departmental Enterprises for estimation of GFCF.

(i) Public Administration:- It covers Central Govt. Administration, State Govt. Administration and Local Bodies.

Central Government Administration:- The estimates of Capital Formation relating to Central Govt. Administration has been prepared by taking into account the expenditure made by the Central Government offices on fixed assets in the State. These offices include Central Soil Salinity Research Institute, Karnal, Regional Station of Forage Production, Hisar, Sugarcane Breeding Regional Centre, Karnal, Agriculture Implements Training Institute, Hisar, etc.

State Government Administration:- The data relating to Capital Formation in respect of State Govt. Administration has been culled out from the analysis of State Govt. Budget. The revenue heads taken into account are Agriculture, Soil & Water Conservation, Command Area Development Authority, Crop Husbandry, Animal Husbandry and Dairy Development. The capital heads included are Soil Conservation, Command Area Development Authority, Animal Husbandry and Dairy Development.

Local Bodies:- The expenditure made by the Market Committees and Haryana State Agricultural Marketing Board has been taken into account under this part. The data is directly collected from the concerned offices.

(ii) Departmental Enterprises:- The expenditure made by the State Government departmental enterprises has also been culled out from the State Government Budget Documents. The departmental enterprises are owned and controlled by the public authorities. The revenue heads included are minor irrigation and major and medium irrigation. The capital heads covered are major and medium irrigation.

(iii) Non-departmental Enterprises:- The expenditure made by Haryana Land Reclamation and Development Corporation on fixed assets has been placed under the head 'State Govt. Non- departmental Enterprises'. The data has been culled out from the balance sheets of the enterprises.

(b) Private Sector:- The estimates of GFCF for private part of agriculture sector have been prepared on the basis of data given in All India Debt and Investment Survey, 2002-03 report. The report provides the necessary data on GFCF separately for rural and urban households. In order to achieve the more authentic results, an attempt has been made to segregate the items of Capital Formation into as many parts as possible, depending upon the availability of data. For each item, the separate indicator as given below has been used to project the benchmark year estimates to the subsequent years:-

(i) Reclamation of land, bunding and other land improvement:- The index of expenditure incurred by State Government on soil conservation is used to project the benchmark year GFCF estimates of reclamation of land at current prices to the subsequent years.

(ii) Wells:- The data relating to number of wells is collected from the Director, Land Records, Haryana. The index of wells is used to project the benchmark year expenditure to the subsequent years for the compilation of GFCF estimates at constant prices. The GFCF estimates at constant prices are inflated with weighted index of construction of wells to arrive at estimates at current prices.

(iii) Other irrigation resources:- The data relating to construction of new irrigation resources in the base year has been extrapolated on the basis of index of agricultural production of all commodities to compile the GFCF estimates at constant prices. The estimates at constant prices are then inflated with the index of wages paid to workers engaged in other agricultural operations to work out the estimates at current prices.

(iv) Agricultural machinery and transport equipments:- The benchmark year expenditure of agricultural machinery and transport equipments is projected to subsequent years on the basis of Index of Industrial Production. These estimates at constant prices are then inflated with Index of Plant and Machinery to arrive at estimates at current prices.

(v) Farm houses: - In case of farm houses, the bench mark year estimates of GFCF have been extrapolated on the basis of the indicator prepared by taking into account the value of agricultural production and increment in livestock.

(vi) Increment in livestock:- The increment in livestock measured in terms of breeding stock, draught animals, dairy cattle and other animals raised for wool clipping has been estimated on the basis of data available from livestock censuses. All livestock animals excepting (i) bulls and bullocks over three years and not in use for breeding or work (ii) cows over three years and not in use for work or breeding purpose (iii) young male and female stock (iv) goats under one year (v) female goats of one year and above and not in milk and (vi) pigs and poultry are taken to form the part of fixed capital formation. The estimates of increment in livestock are evaluated at the average wholesale prices collected by the DSO offices in the State.

2. Forestry

The estimates of capital expenditure on forest preservation, extension, etc. in the public sector have been worked out from the State Government Budget Document. The expenditure made on forest preservation and extension by panchayat and panchayat samities has also been included under public sector. In case of private sector, the estimates are being prepared on the basis of data regarding revenue received by the farmers from sale of plants available from the Forest Department, Haryana.

3. Fishing

The estimates of public sector are based upon the data provided in State Government Budget Document. In case of private sector, the estimates are based upon the information regarding expenditure incurred by private fish farmers on different items of Capital Formation i.e. construction/renovation of ponds, fishing boats, fishing nets, etc. available from the Fisheries Department, Haryana.

4. Mining and Quarrying

For estimation of public sector GFCF estimates, the expenditure made under the head 'Mines and Minerals' in the State Government Budget has been taken into account. In case of private sector, the GFCF estimates are compiled on the basis of expenditure incurred by private miners on different items of Capital Formation collected through the District Statistical Offices.

5. Manufacturing

5.1 Registered Manufacturing:- Registered Manufacturing sector covers all manufacturing and processing establishments which are registered under Indian Factories Act., 1948. Annual Survey of Industries covers the entire factory sector comprising factories registered under section 2m(i) and 2m(ii) of Indian Factories Act 1948 and functioning within jurisdiction of Haryana State. These sections refer to the units employing 10 or more workers with power and 20 or more workers without power on any day of the preceding twelve months.

(a) Public Sector:-

(i) Public Administration:- No factory is reported to have been covered under Central Govt. Administration, State Government Administration and Local Bodies.

(ii) Departmental Enterprises:- It covers the workshops of Northern Railways, Kalka and Jagadhri and Haryana Coach Builders, Rohtak. Similarly, Government Press, Kurukshetra and Faridabad have also been covered under manufacturing sector.

(iii) Non- departmental Enterprises:-

Central Govt. Non-departmental Enterprises:- It covers Hindustan Machine Tools, Pinjore, National Fertilizers Ltd., Panipat, Maruti Udyog Ltd., Gurugram and Bharat Petroleum, Panipat. The information on capital expenditure is collected directly from their offices.

State Govt. Non-departmental Enterprises:- It covers Haryana Agro Industries Corporation Limited, Panchkula, Haryana State Co-operative Supply and Marketing Federation Limited, Panchkula and two units of Haryana Dairy Development Co-operative Federation Limited. The requisite data is collected directly from these units.

(b) Private Sector

Annual Survey of Industries (ASI) provides the information on GFCF at State level. Under ASI, all units have been divided into two parts i.e. census part and sample part.

Census part:- All units in census part are covered on complete enumeration basis. Adjustment for non-responsive units is also made.

Sample part:- In case of sample part, a part of units is covered and the remaining units are accounted for, by using the multiplier.

5.2 Unregistered Manufacturing:- Unregistered Manufacturing sector covers all manufacturing and processing activities which are not registered under 2m(i) and 2m(ii) of the Indian Factories Act, 1948. It includes Directory Manufacturing Establishments, Own Account Enterprises and Non-directory Manufacturing Establishments. It is covered under private sector.

The benchmark year estimates of GFCF for this sector are based on the results of Enterprise Survey 2005-06. These estimates are moved forward with the help of index of Gross State Domestic Product of unregistered manufacturing sector at current prices.

6. Electricity, Gas and Water Supply

There are different undertakings which are engaged in generation, transmission and distribution of electricity in the State. The expenditure made by the companies namely; Haryana Vidyut Parsaran Nigam Ltd., Haryana Power Generation Corporation Ltd., Uttar Haryana Bijli Vitran Nigam Ltd. and Dakshin Haryana Bijli Vitran Nigam Ltd. on different items of capital formation is available from their annual accounts. The GFCF estimates from other two bodies i.e. Power Generation Corporation and National Thermal Power Corporation are prepared and supplied by the CSO.

In case of Gas sub-sector, the expenditure made by Gas Authority of India Limited (GAIL) on different items of capital formation is supplied by the CSO. In case of Bio-Gas, the expenditure incurred by the Department of Renewable Energy on Institutional Community Bio-Gas Programme has been taken into account. This expenditure has been placed under the head "Other Construction".

In case of Water Supply, the expenditure incurred by the Municipal Committees/Notified Area Committees on water supply schemes in urban areas is taken into account. The relevant figures are available from the budgets of Municipal Committees/ Notified Area Committees. This expenditure is placed under the head "Other Construction" because in case of water supply schemes, most of the expenditure is made on reservoirs and laying of pipelines, etc.

7. Construction

The Gross Fixed Capital Formation in the Construction sector comprises the net addition to the machinery, equipments, tools and implements of construction

enterprises. Any new construction expenditure in the form of office buildings etc. of these enterprises have also been included under construction sector.

(a) Public Sector:- The expenditure made by the State Public Works Department (B&R) on machinery and equipments has been taken under the State Government Administration. The expenditure made by the Public Works Department (B&R) on machinery and equipments has been culled out from the State Government Budget Document. Housing Board Haryana, Haryana Urban Development Authority, Haryana Forest Corporation and Haryana Police Housing Corporation are covered under the head "Local Bodies". The relevant data for the local authorities have been taken from their annual statements or accounts/ balance sheets.

(b) Private Sector: - The bench-mark year estimates of GFCF in respect of unorganized part are based on the 29th Round of National Sample Survey (NSS) data. The 29th Round NSS data mainly pertain to the own account workers along with small employers, the nature of whose activities was more or less similar to those of own account workers engaged in construction activity. The survey covers the unorganized sector of different non-agricultural industries. The unorganized sector for the purpose of the 29th round enquiry was defined as the enterprises under own account workers and those employers who did not usually employ more than five hired workers. The bench mark year estimates for rural areas have been moved forward with the combined index of rural population and rural income with equal weights for rural income and rural population. The bench mark year estimates for urban areas have been projected to subsequent years with the combined index of urban income and urban population with equal weights for urban income and urban population. The index has been worked out on the assumption that with change in income and population, construction activity also undergoes the similar rate of change.

8. Trade, Hotels and Restaurants

The GFCF estimates have been prepared separately for Trade sector and Hotels and Restaurants sector.

Trade

(a) Public Sector: - The public sector covers Central and State Government Non-departmental Enterprises.

Central Government Non-Departmental Enterprises:- The estimates of these enterprises are based on the data provided in the annual accounts reports of Central Government Non-Departmental Enterprises viz. Cotton Corporation of India, Indian Oil Corporation, Steel Authority of India, Hindustan Petroleum, National Handloom Corporation and Food Corporation of India. The information from these Central Government Non-Departmental Enterprises is collected from their regional/head offices.

State Government Non-Departmental Enterprises: - This covers Haryana Seeds Development Corporation and Confed. The information for these offices is culled out from their annual accounts.

(b) Private Sector: - The bench mark year estimates of private part of trade sector have been prepared on the basis of the results culled out from the report "State Level Results on Small Trading Units in India, July 1990 to June 1991." The bench mark year estimates are projected to the subsequent years with the help of the index of total number of shops and commercial establishments in the State to reach at the GFCF estimates at constant prices. These GFCF estimates at constant prices are then inflated with the suitable price indices.

Hotels and Restaurants

(a) Public Sector: - The estimates of public administration sector are being prepared by culling out the data from the State Government, Budget Document. The information on capital expenditure of Central Government Non-departmental Enterprises i.e. Indian Tourism Development Corporation Ltd. and State Government Non-departmental Enterprises i.e. Haryana Tourism Corporation is collected from their annual reports.

(b) Private Sector: - The bench mark year estimates for private sector are being prepared on the basis of the results of Enterprise Survey, 2006-07. The bench mark year estimates are projected to the subsequent years with the help of the index of total number of hotels and restaurants in the State to reach at GFCF estimates at constant prices. These GFCF estimates at constant prices are then inflated with the suitable price deflators to reach at GFCF estimates at current prices.

9. Transport, Storage and Communication

(a) Railways:- The Railway sector is a supra- regional Sector. The GFCF estimates of this sector are prepared and supplied by the CSO.

(b) Transport by Other Means: - In case of public sector, the estimates are being prepared by culling out the requisite data from the State Government Budget Document. For private sector, the bench mark year estimates of GFCF are based on the data provided in the NSSO Report, "Mechanised and Non-Mechanised Passengers and Goods Transport Survey, 1993-94. The bench mark year estimates of private sector are categorised into mechanised and non-mechanised segments. The bench mark year estimates of mechanised part are projected to the subsequent years with the index of number of mechanised vehicles to reach at the estimates at constant prices. These estimates at constant prices are then inflated with the suitable price deflators to work out the estimates at current prices. "The bench mark year estimates of non-mechanised segment are projected to the subsequent years with the index of number of non-mechanised vehicles to compile the estimates at constant prices. These estimates at constant prices are then inflated with the suitable prices deflators to compile the estimates at current prices.

(c) Storage: - This sub-sector covers Central Warehousing Corporation and Haryana Warehousing Corporation in the public sector. The data for these corporations is culled out from their annual accounts reports. The data regarding the expenditure incurred on different items of Capital assets for private sector is being collected from all the cold storages in the State through district agencies.

(d) Communication:- The Communication sub-sector is a supra-regional sector. The estimates of GFCF for this sector are prepared and supplied by the CSO.

10. Banking and Insurance

The Banking and Insurance sector is a supra - regional sector. Hence, the GFCF estimates of this sector are prepared and supplied by the CSO.

11. Real Estate, Ownership of Dwellings and Business Services

The economic activities covered in this sector are Real Estate, Ownership of Dwellings and Business Services.

(a) Public Sector:- The estimates of GFCF in respect of Real Estate and Ownership of Dwellings are prepared by culling out the requisite data from the State Government Budget Document.

(b) Private Sector:- The benchmark year estimates of residential buildings in rural and urban areas have been prepared on the basis of data provided in AIDIS 2002-03 report. The bench mark year estimates for rural and urban areas have been

carried forward separately to the subsequent years with the help of rural and urban indices of the annual additions in the number of residential dwellings to obtain the estimates at constant prices. These GFCF estimates in rural and urban areas at constant prices are then super imposed by the indices of housing and building material and wages of construction labour separately for rural and urban areas to get the estimates at current prices.

12. Public Administration

The administrative departments include all offices of the Central Government, State Government and Local Bodies viz. Municipal Committees, Notified Area Committees, Improvement Trusts, Cantonment Boards, Gram Panchayats and Panchayat Samities engaged in administration and regulation of the public order. The administrative departments include the activities relating to the collection of taxes, defence services and administrative services such as police, jails, administration of justice, audit, cooperation, broadcasting, labour and employment, education, industries, etc.

(a) Central Government:- The estimates of GFCF in respect of Central Government Public Administration are prepared and supplied by the CSO.

(b) State Government:- The main source of information is the publication, "Economic-Cum-Purpose Classification of the Haryana Government Budget" brought out by this department. After allocating the figures of expenditure to different sectors depending upon their industry of use, the residual part has been placed under Public Administration. The publication does not provide the separate figures of expenditure on furniture and fixture, office equipments, other equipments, etc. All such type of expenditure is being shown under 'commodity and services'. In order to estimate the expenditure on the aforesaid equipments, a type study was got conducted and on the basis of the study results, the figures of expenditure made by the State Government on furniture and fixture, office equipment etc. have been estimated and placed under the head 'Other Equipments'.

(c) Local Bodies:- The capital expenditure made by Municipal Committees/Notified Area Committees, Improvement Trusts, Cantonment Boards, Panchayat Samities and Gram Panchayats have been covered under this head. The part of expenditure made by the Local Bodies which have already been included under any other sector according to their industry of use, have been deducted from their total

expenditure and the remaining expenditure has been placed under this head. The expenditure incurred by Municipal Committees/Notified Area Committees on construction of buildings and reservoirs, machinery and equipments relating to water supply schemes has been placed under the sector 'Electricity, Gas and Water Supply' and the remaining expenditure on fixed assets is included under Public Administration sector. Similarly, the expenditure made by Panchayat Samities and Gram Panchayats on tree plantation has been allocated to Forestry Sector and the remaining expenditure on fixed assets has been taken under Public Administration sector.

13. Other Services

This sector covers educational, medical and health, sanitary, cultural and personal services. The estimates of GFCF for this sector are prepared separately for public and private sectors.

(a) Public Sector:- In case of public sector, the estimates are compiled by analyzing the budget documents and annual reports. The GFCF figures of State Government Administration have been taken from State Govt. Budget Documents. Kurukshetra Development Board, Kurukshetra, Mewat Development Board, Zila Sanik Boards and Haryana Khadi & Village Industries Board are covered under Local Bodies and the information on capital expenditure is collected directly from these offices. Central Government Non-departmental Enterprises cover Engineers India Ltd., New Delhi and State Government Non-departmental Enterprises cover Haryana Backward Classes Nigam and Haryana Scheduled Castes Finance and Development Corp. Ltd. The requisite information is collected directly from these offices.

(b) Private Sector:- In case of organized sector, the information on capital expenditure is directly collected from the institutions namely; Schools, Colleges, ITI's, Polytechnics, Universities, DRDA, Cinemas, Christians Hospitals, etc. The GFCF estimates from unorganized private sector has been compiled under three categories i.e. (i) Education, (ii) Health and medical and (iii) Other Community, Social and personal services. In case of education, the expenditure incurred on different assets is collected from the aided private schools selected in the state through the District Statistical Offices. Then, the bench mark year estimates of GFCF of education in unorganized sector available from the report of Enterprise survey,

2006-07 are projected to the subsequent years with the index of expenditure as collected above from the aided schools. The benchmark year of GFCF estimates of health and medical services in unorganized sector available from the report of Enterprise survey, 2006-07 are moved to the subsequent years with the index of workforce of medical and health services. The bench mark year estimates of GFCF of other community, social and personal services in unorganized sector available from the Enterprise survey, 2007 is moved forward to the subsequent years with the index of the number of different types of social welfare societies.

Overview of State GFCF Estimates

The Gross Fixed Capital Formation estimates compiled for the year 2015-16 are provisional. As already discussed in the previous chapters, GFCF estimates at both current and constant prices have been compiled by industry of use, type of assets and type of institutions. The estimates of GFCF for the year 2015-16 has been depicted in Tables 4.1 to 4.46

The analysis of Gross Fixed Capital Formation estimates shows that the GFCF of the State at current prices has increased from ₹. 65357.49 crore in 2014-15 to ₹. 71116.43 crore in 2015-16 registering a growth of 8.8 percent. Similarly, the GFCF at constant prices has increased from ₹. 36158.17 crore in 2014-15 to ₹. 38851.41 crore in 2015-16 recording an increase of 7.4 percent. The composition of GFCF by three broad sectors of the economy i.e., primary, secondary and tertiary sectors reveals that the secondary sector has the maximum contribution to the State GFCF followed by tertiary and primary sectors. The comparison of GFCF composition during the period 2014-15 to 2015-16 at constant prices shows that the contribution of secondary sector has decreased from 55.3 percent in 2014-15 to 53.1 percent in 2015-16. The contribution of primary sector has increased from 12.0 percent in 2014-15 to 12.4 percent in 2015-16. The contribution of tertiary sector has also increased from 32.7 percent in 2014-15 to 34.5 percent in 2015-16.

The estimates of GFCF by type of institutions at constant prices shows that the contribution of private sector in the total GFCF of the State has increased from 64.8 percent in 2014-15 to 66.9 percent in 2015-16. Consequently, the contribution of public sector has decreased from 35.2 percent in 2014-15 to 33.1 percent in 2015-16.

The analysis of GFCF by type of assets at constant prices reveals that the construction of building had the highest (44.4%) contribution in the total GFCF of the State followed by plant & machinery (39.4%), other construction (10.7%), roads & bridges (3.8%) and transport equipments (1.7%) in the year 2014-15. During the reporting period 2015-16, the contribution of plant and machinery was highest (51.0%) followed by construction of building (35.7%), other construction (7.6%), road & bridges (3.5%) and transport equipments (2.2%). It indicates that the contribution

of plant and machinery in the State GFCF has increased whereas that of buildings has decreased during the period 2014-15 to 2015-16.

The comparison of GFCF to the GSDP during the period 2014-15 to 2015-16 indicates that the GFCF as percentage of GSDP at current prices was the highest (17.5%) in 2007-08. During the year 2015-16, this ratio was 21.0% at All India level and at State level, it is 14.6%.

TABLE 4.1
ESTIMATES OF GROSS FIXED CAPITAL FORMATION IN HARYANA
BY INDUSTRY OF USE AT CURRENT PRICES

(₹ in Lakh)													
Sr. No.	Industry	2004-05	2005-06	2006-07	2007-08	2008-09	2009-10	2010-11	2011-12	2012-13	2013-14	2014-15	2015-16(P)
1	Agriculture	113061	130066	166891	246716	291231	364961	442928	614718	835720	1052513	1217716	1440325
2	Forestry	17160	6784	6776	7316	9224	7022	6307	6595	9455	9218	10872	11115
3	Fishing	391	774	522	791	982	966	901	686	402	361	380	525
4	Mining & Quarrying	4785	4944	5112	5433	5453	1879	89	79	198	37	27	20
	Sub-total : Primary	135397	142568	179301	260256	306890	374828	450225	622078	845775	1062129	1228995	1451985
		(9.3)	(8.6)	(8.9)	(9.8)	(9.7)	(10.4)	(10.6)	(13.0)	(15.9)	(18.0)	(18.8)	(20.4)
5	Manufacturing	652850	744955	889880	1137109	1299834	1287616	1557508	1976909	2203632	2324214	2449015	2528647
	5.1 Registered	366394	431572	530951	738649	873301	817828	1031669	1330774	1453205	1532724	1615025	1667539
	5.2 Un-registered	286456	313383	358929	398460	426533	469788	525839	646135	750427	791490	833990	861108
6	Electricity, Gas and Water Supply	116690	158002	245683	306875	450695	468235	702852	517118	379193	317839	379081	398537
7	Construction	35514	37430	40008	68272	70473	100881	94399	107647	146115	192100	218660	181262
	Sub Total : Secondary	805054	940387	1175571	1512256	1821002	1856732	2354759	2601674	2728940	2834153	3046756	3108446
		(55.5)	(56.5)	(58.0)	(57.2)	(57.5)	(51.5)	(55.2)	(54.2)	(51.3)	(47.9)	(46.6)	(43.7)
8	Trade, Hotels & Restaurants	8621	9295	9662	12908	37324	39783	40811	44451	53813	73988	104693	92443
	8.1 Trade	4970	5349	5436	8556	31639	34305	35057	37911	45909	65759	94485	81725
	8.2 Hotels & Restaurants	3651	3946	4226	4352	5685	5478	5754	6540	7904	8229	10208	10718
9	Transport, Storage & Communication	87361	123445	140709	193622	246414	320005	317060	300460	306067	326530	341950	459075
	9.1 Railways	4912	31520	33821	75165	32508	58851	62311	25725	41941	44835	46494	124185
	9.2 Transport by Other means	29988	27794	40904	41835	50422	41788	52696	54825	59543	63432	64400	74908
	9.3 Storage	560	503	935	1254	598	8092	14192	3864	5472	6210	9249	10893
	9.4 Communication	51901	63628	65049	75368	162886	211274	187861	216046	199111	212053	221807	249089
10	Banking & Insurance	18923	16006	17140	24742	15972	29274	35783	30844	46612	55841	65278	71675
11	Real Estate, Ownership of Dwellings and Business services (only Residential Buildings Part)	243516	259089	293313	338659	389567	425164	490510	567462	649382	729212	773250	811696
12	Public Administration	134451	151465	184014	265885	301309	494153	516331	553707	610883	730213	868916	1001871
13	Other Services	18338	20831	26722	38014	46742	62320	56080	74149	74301	101288	105911	114452
	Sub Total : Tertiary	511210	580131	671560	873830	1037328	1370699	1456575	1571073	1741058	2017072	2259998	2551212
		(35.2)	(34.9)	(33.1)	(33.0)	(32.8)	(38.1)	(34.2)	(32.8)	(32.8)	(34.1)	(34.6)	(35.9)
	Total	1451961	1663086	2026432	2646342	3165220	3602259	4261559	4794825	5315773	5913354	6535749	7111643
		(100.0)	(100.0)	(100.0)	(100.0)	(100.0)	(100.0)	(100.0)	(100.0)	(100.0)	(100.0)	(100.0)	(100.0)

Note: Figures in brackets are percentage to total
P: Provisional

TABLE 4.2

**ESTIMATES OF GROSS FIXED CAPITAL FORMATION IN HARYANA
BY INDUSTRY OF USE AT CONSTANT (2004-05) PRICES**

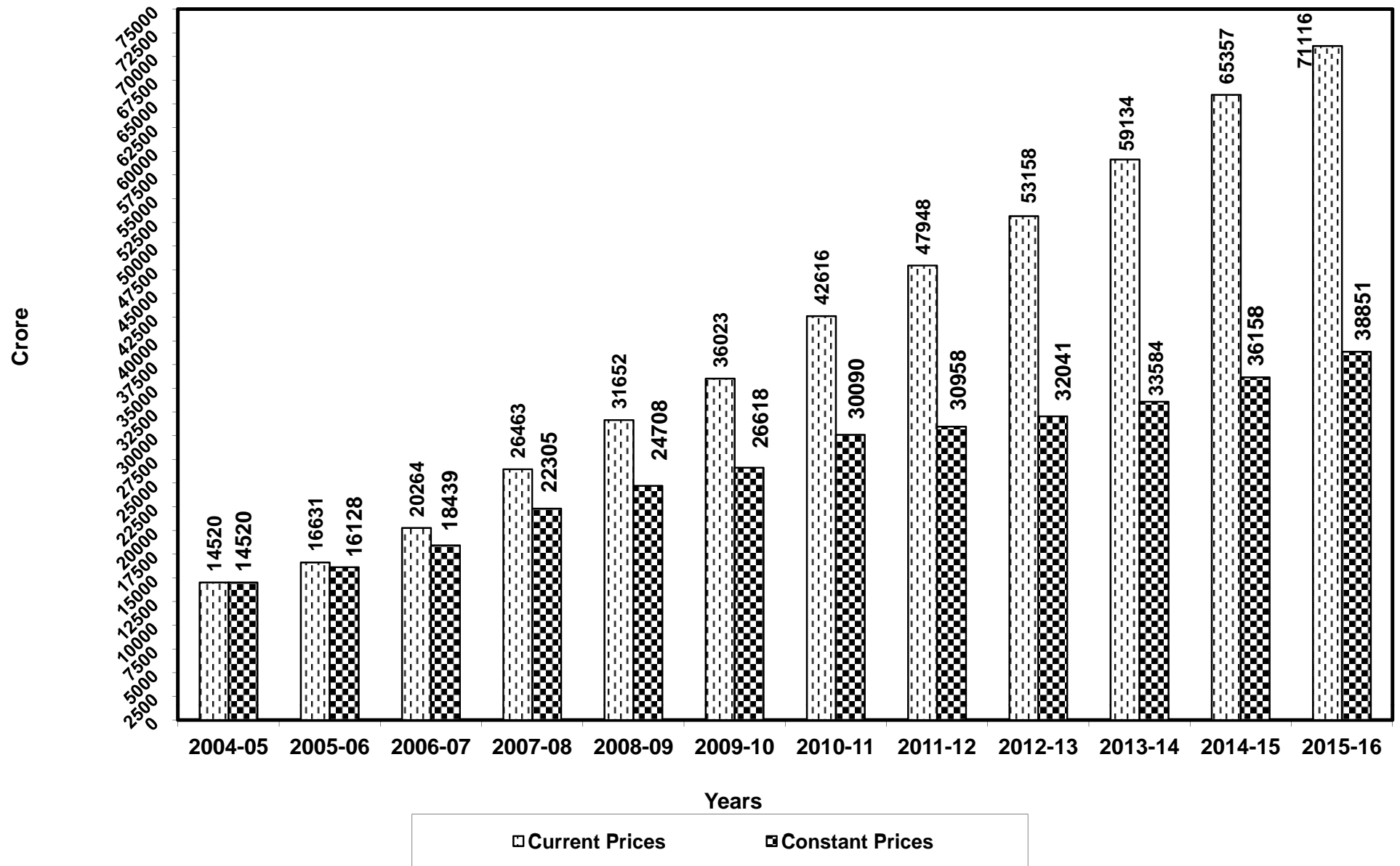
(₹ in Lakh)

Sr. No.	Industry	2004-05	2005-06	2006-07	2007-08	2008-09	2009-10	2010-11	2011-12	2012-13	2013-14	2014-15	2015-16(P)
1	Agriculture	113061	124293	152754	203321	213972	239868	248751	291626	336431	384377	429191	474259
2	Forestry	17160	6594	6212	6005	6814	4910	3940	3719	4936	4599	5206	5386
3	Fishing	391	752	479	651	734	695	568	395	218	189	193	294
4	Mining & Quarrying	4785	4832	4644	4467	4040	1453	65	51	151	24	15	13
	Sub-total : Primary	135397	136471	164089	214444	225560	246926	253324	295791	341736	389189	434605	479952
		(9.3)	(8.4)	(8.9)	(9.6)	(9.1)	(9.3)	(8.4)	(9.6)	(10.7)	(11.6)	(12.0)	(12.4)
5	Manufacturing	652850	722533	806716	970355	1026993	1000668	1191671	1425841	1534610	1571440	1617011	1688160
	5.1 Registered	366394	417477	481854	638981	700419	657441	829615	1021432	1100091	1126493	1159161	1210164
	5.2 Un-registered	286456	305056	324862	331374	326574	343227	362056	404409	434519	444947	457850	477996
6	Electricity, Gas and Water Supply	116690	153153	225064	263867	375053	336477	526416	367715	286651	235918	276590	287954
7	Construction	35514	36601	36701	56042	52102	70581	58520	61654	77369	96167	105233	88069
	Sub-total : Secondary	805054	912287	1068481	1290264	1454148	1407726	1776607	1855210	1898630	1903525	1998834	2064183
		(55.5)	(56.6)	(57.9)	(57.9)	(58.9)	(52.9)	(59.1)	(59.9)	(59.2)	(56.7)	(55.3)	(53.1)
8	Trade, Hotels & Restaurants	8621	9063	8905	11464	28606	29433	28427	28661	33102	53020	73496	62949
	8.1 Trade	4970	5209	5095	7918	24422	25626	24694	24831	28994	48851	68494	57707
	8.2 Hotels & Restaurants	3651	3854	3810	3546	4184	3807	3733	3830	4108	4169	5002	5242
9	Transport, Storage & Communication	87361	119748	129467	167031	201327	253158	238283	216659	210061	215473	219078	288444
	9.1 Railways	4912	30611	30577	63131	25501	44391	44565	17058	26089	26984	27237	72914
	9.2 Transport by Other means	29988	27063	38793	38562	43989	35379	43244	42598	44019	45898	45912	50922
	9.3 Storage	560	490	797	1029	463	5834	9387	2201	2922	3090	4357	5246
	9.4 Communication	51901	61584	59300	64309	131374	167554	141087	154802	137031	139501	141572	159362
10	Banking & Insurance	18923	15549	15594	21448	12693	23869	27037	22415	31946	36781	40375	43624
11	Real Estate, Ownership of Dwellings and Business services (only Residential Buildings Part)	243516	252381	264492	274766	286350	298094	305806	317909	327148	343400	364750	388169
12	Public Administration	134751	147069	168623	219827	227237	357948	343145	315695	320778	362661	430045	498999
13	Other Services	18338	20276	24258	31218	34841	44645	36392	43490	40723	54374	54634	58821
	Sub-total : Tertiary	511510	564086	611339	725754	791054	1007147	979090	944829	963758	1065709	1182378	1341006
		(35.2)	(35.0)	(33.2)	(32.5)	(32.0)	(37.8)	(32.5)	(30.5)	(30.1)	(31.7)	(32.7)	(34.5)
	Total	1451961	1612844	1843909	2230462	2470762	2661799	3009021	3095830	3204124	3358423	3615817	3885141
		(100.0)	(100.0)	(100.0)	(100.0)	(100.0)	(100.0)	(100.0)	(100.0)	(100.0)	(100.0)	(100.0)	(100.0)

Note: Figures in brackets are percentage to total

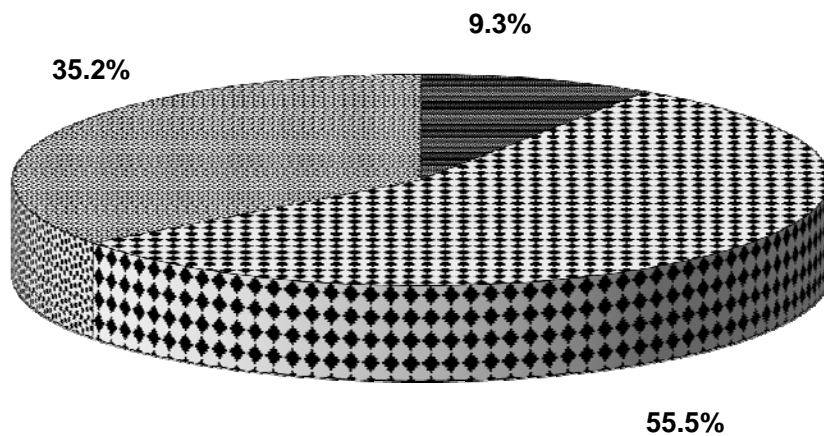
P: Provisional

Estimates of Gross Fixed Capital Formation in Haryana

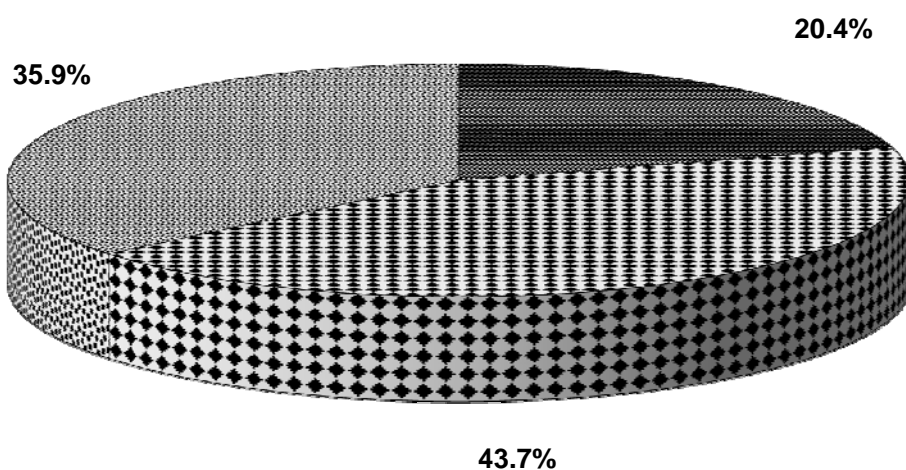


Composition of Gross Fixed Capital Formation in Haryana by Broad Sectors at Current Prices

2004-05



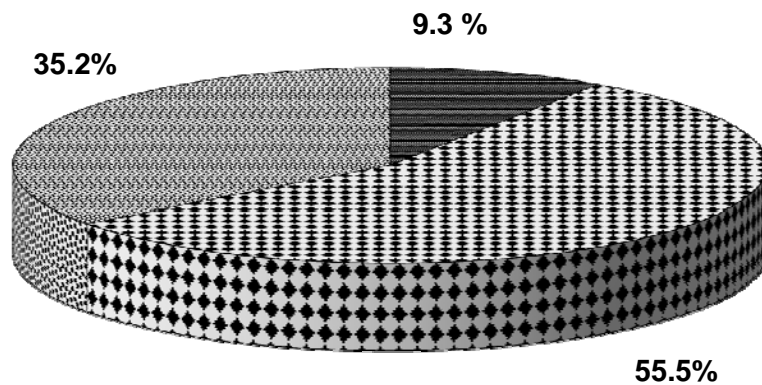
2015-16



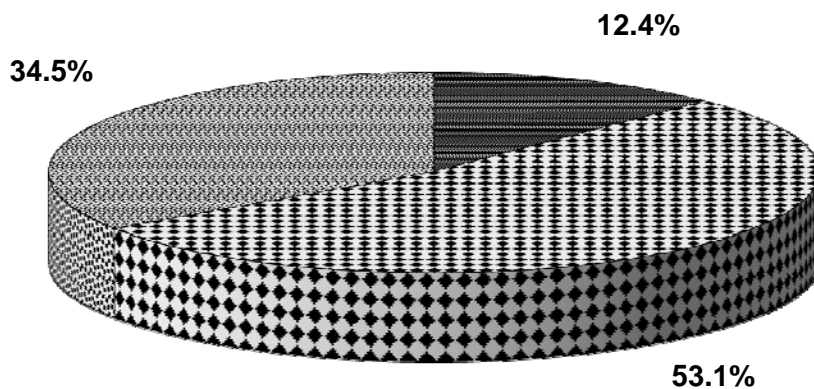
■ Primary ■ Secondary ■ Tertiary

Composition of Gross Fixed Capital Formation in Haryana by Broad Sectors at Constant Prices

2004-05



2015-16



■ Primary ■ Secondary ■ Tertiary

TABLE 4.3
ESTIMATES OF GROSS FIXED CAPITAL FORMATION IN HARYANA
BY TYPE OF INSTITUTIONS AT CURRENT PRICES

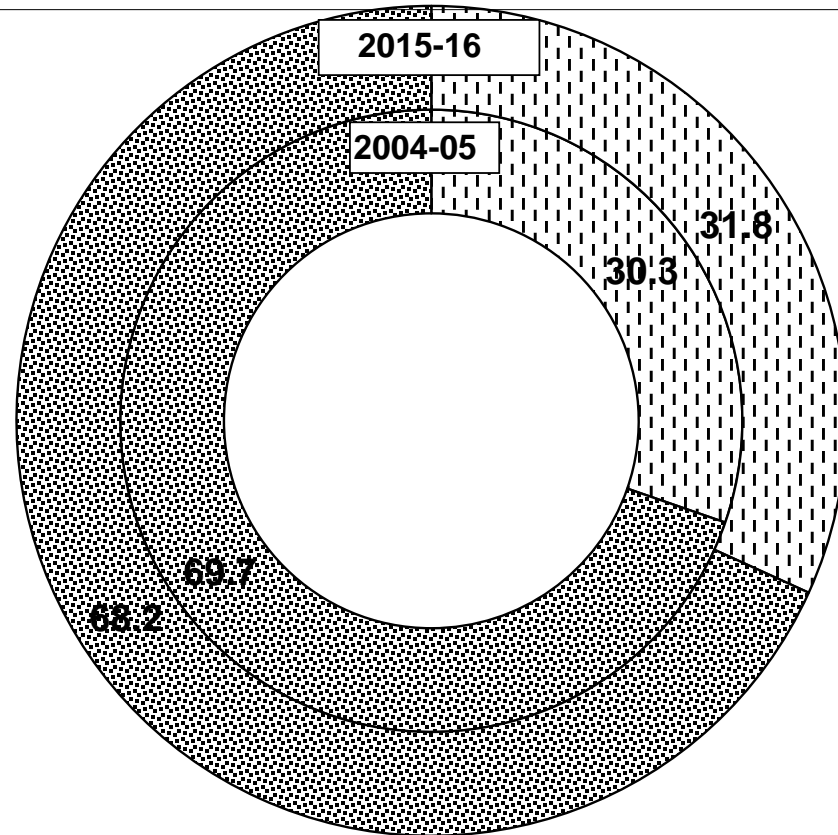
(₹ in Lakh)

Sr. No.	Institutions	2004-05	2005-06	2006-07	2007-08	2008-09	2009-10	2010-11	2011-12	2012-13	2013-14	2014-15	2015-16(P)
I	Public Administration	199671	216899	257550	393011	440973	676064	658367	716025	802600	995776	1145607	1268646
	a) Central Government	36662	29040	32680	75239	54264	191300	207201	209903	217701	227278	234326	257056
	b) State Government	88955	115246	142237	196032	255718	295481	290202	315000	358610	467019	446497	577938
	c) Local Bodies	74054	72613	82633	121740	130991	189283	160964	191122	226289	301479	464784	433652
II	Departmental Enterprises	42076	90307	98857	176724	131987	146356	142641	121920	146883	83018	84564	161588
	a) Central Government	4912	31520	33821	75165	32508	58851	62311	25725	41941	44835	46494	124185
	b) State Government	37164	58787	65036	101559	99479	87505	80330	96195	104942	38183	38070	37403
III	Non Departmental Enterprises	197640	231300	422900	469475	807303	682396	940147	857657	872690	849951	961150	828186
	a) Central Government	79965	68280	170522	149225	317579	175336	189705	371764	587467	627041	654398	517105
	i) Non-financial	68018	59786	163219	138142	307729	153149	169737	350661	559513	593536	628287	488435
	ii) Financial	11947	8494	7303	11083	9850	22187	19968	21103	27954	33505	26111	28670
	b) State Government	117675	163020	252378	320250	489724	507060	750442	485893	285223	222910	306752	311081
	i) Non-financial	117600	162942	252293	319686	489680	507046	750428	485893	285222	222910	306752	311081
	ii) Financial	75	78	85	564	44	14	14	0	1	0	0	0
	A. Total : Public Sector	439387	538506	779307	1039210	1380263	1504816	1741155	1695602	1822173	1928745	2191321	2258420
		(30.26)	(32.38)	(38.46)	(39.27)	(43.61)	(41.77)	(40.86)	(35.36)	(34.28)	(32.62)	(33.53)	(31.76)
	B-Total : Private Sector	1012574	1124580	1247125	1607132	1784957	2097443	2520404	3099223	3493600	3984609	4344428	4853223
		(69.74)	(67.62)	(61.54)	(60.73)	(56.39)	(58.23)	(59.14)	(64.64)	(65.72)	(67.38)	(66.47)	(68.24)
	C- Grand Total (A+B)	1451961	1663086	2026432	2646342	3165220	3602259	4261559	4794825	5315773	5913354	6535749	7111643
		(100.0)	(100.0)	(100.0)	(100.0)	(100.0)	(100.0)	(100.0)	(100.0)	(100.0)	(100.0)	(100.0)	(100.0)

Note: Figures in brackets are percentage to total

P: Provisional

**Contribution of Public and Private Sector in Gross Fixed Capital Formation
At Current Prices**



Public Sector Private Sector

TABLE 4.4

**ESTIMATES OF GROSS FIXED CAPITAL FORMATION IN HARYANA
BY TYPE OF INSTITUTIONS AT CONSTANT (2004-05) PRICES**

(₹ in Lakh)

Sr. No.	Institutions	2004-05	2005-06	2006-07	2007-08	2008-09	2009-10	2010-11	2011-12	2012-13	2013-14	2014-15	2015-16(P)
I	Public Administration	199671	209552	235924	324444	330930	485549	431826	409190	422899	497194	563826	629376
	a) Central Government	36662	28201	29503	61763	40894	144402	145586	119772	114139	113303	113291	126653
	b) State Government	88955	111508	130990	162658	193047	209532	185391	180355	189834	233669	216602	285071
	c) Local Bodies	74054	69843	75431	100023	96989	131615	100849	109063	118926	150222	233933	217652
II	Departmental Enterprises	42076	86755	90406	147670	101606	107284	97366	73489	86921	49470	48823	91765
	a) Central Government	4912	30611	30577	63131	25501	44391	44565	17058	26089	26984	27237	72914
	b) State Government	37164	56144	59829	84539	76105	62893	52801	56431	60832	22486	21586	18851
III	Non Departmental Enterprises	197640	224094	386001	404129	658228	490333	700853	618867	644281	609746	659166	562958
	a) Central Government	79965	66049	154881	129098	254209	126388	143340	278431	444817	460944	456802	363784
	i) Non-financial	68018	57827	148244	119393	246054	107917	127329	262234	424039	436805	438350	343688
	ii) Financial	11947	8222	6637	9705	8155	18471	16011	16197	20778	24139	18452	20096
	b) State Government	117675	158045	231120	275031	404019	363945	557513	340436	199464	148802	202364	199174
	i) Non-financial	117600	157969	231042	274572	403985	363934	557504	340436	199463	148802	202364	199174
	ii) Financial	75	76	78	459	34	11	9	0	1	0	0	0
	A. Total : Public Sector	439387	520401	712331	876243	1090754	1083166	1230045	1101546	1154101	1156410	1271815	1284099
		(30.26)	(32.27)	(38.63)	(39.29)	(44.15)	(40.69)	(40.88)	(35.58)	(36.02)	(34.43)	(35.17)	(33.05)
	B-Total : Private Sector	1012574	1092443	1131578	1354219	1380008	1578633	1778976	1994284	2050023	2202013	2344002	2601042
		(69.74)	(67.73)	(61.37)	(60.71)	(55.85)	(59.31)	(59.12)	(64.42)	(63.98)	(65.57)	(64.83)	(66.95)
	C- Grand Total (A+B)	1451961	1612844	1843909	2230462	2470762	2661799	3009021	3095830	3204124	3358423	3615817	3885141
		(100.0)	(100.0)	(100.0)	(100.0)	(100.0)	(100.0)	(100.0)	(100.0)	(100.0)	(100.0)	(100.0)	(100.0)

Note: Figures in brackets are percentage to total

P: Provisional

**Contribution of Public and Private Sector in Gross Fixed Capital Formation
At Constant (2004-05) Prices**

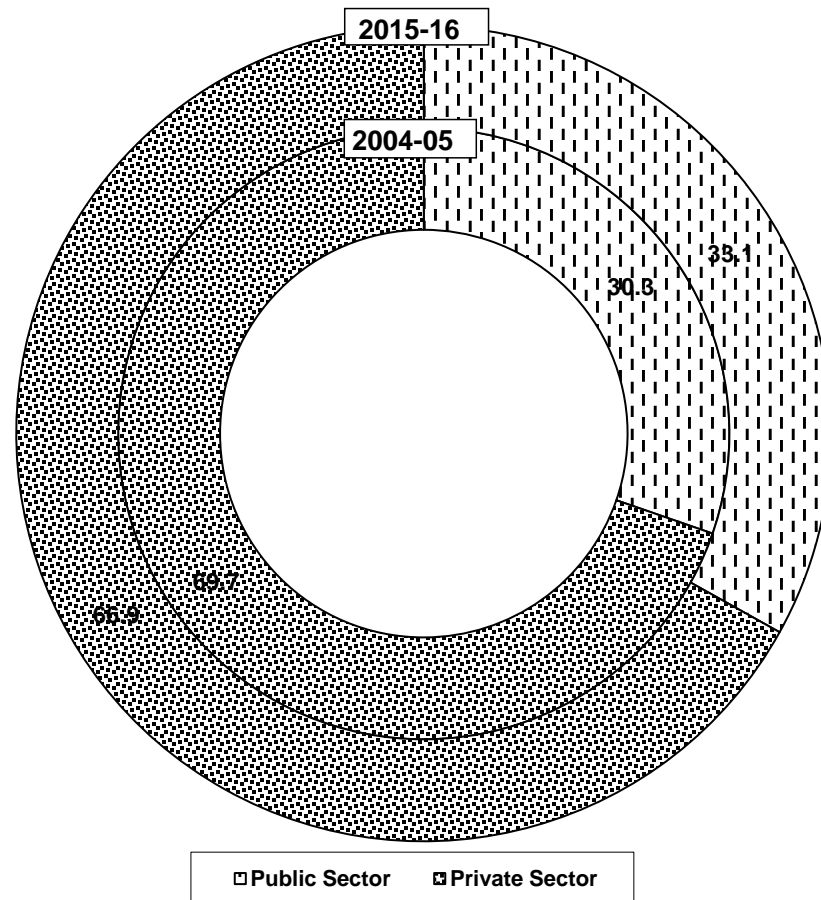


TABLE 4.5

**ESTIMATES OF GROSS FIXED CAPITAL FORMATION IN HARYANA
BY TYPE OF ASSETS AT CURRENT PRICES**

(₹ in Lakh)							
Sr. No.	Year	Buildings	Roads & Roads &	Other Construction	Plants & Machinery *	Transport Equipment	Total Gross Fixed Capital Formation
1	2004-05	578979 (39.9)	52267 (3.6)	225165 (15.5)	538315 (37.1)	57235 (3.9)	1451961 (100.0)
2	2005-06	687729 (41.4)	44995 (2.7)	169318 (10.2)	713646 (42.9)	47398 (2.8)	1663086 (100.0)
3	2006-07	756020 (37.3)	38459 (1.9)	445256 (22.0)	723163 (35.7)	63534 (3.1)	2026432 (100.0)
4	2007-08	928597 (35.1)	49604 (1.9)	448908 (16.9)	1145168 (43.3)	74065 (2.8)	2646342 (100.0)
5	2008-09	1305152 (41.2)	82927 (2.6)	453382 (14.3)	1251959 (39.6)	71800 (2.3)	3165220 (100.0)
6	2009-10	1344024 (37.3)	129733 (3.6)	844540 (23.4)	1209486 (33.6)	74476 (2.1)	3602259 (100.0)
7	2010-11	1423173 (33.4)	148789 (3.5)	592371 (13.9)	2006434 (47.1)	90792 (2.1)	4261559 (100.0)
8	2011-12	1817182 (37.9)	246195 (5.1)	590525 (12.3)	2051925 (42.8)	88998 (1.9)	4794825 (100.0)
9	2012-13	2106853 (39.6)	247547 (4.7)	544326 (10.2)	2312175 (43.5)	104872 (2.0)	5315773 (100.0)
10	2013-14	2567974 (43.4)	292319 (4.9)	553376 (9.4)	2386079 (40.4)	113606 (1.9)	5913354 (100.0)
11	2014-15	2902050 (44.4)	246081 (3.8)	701953 (10.7)	2572243 (39.4)	113422 (1.7)	6535749 (100.0)
12	2015-16(P)	3190425 (44.9)	310578 (4.4)	592978 (8.3)	2890851 (40.6)	126811 (1.8)	7111643 (100.0)

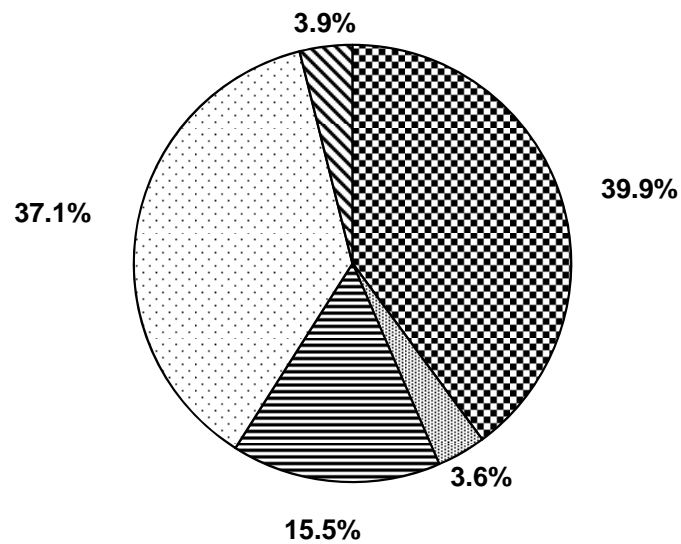
*Items of other equipments are included under " plants & machinery"

Note: Figures in brackets are percentage to total

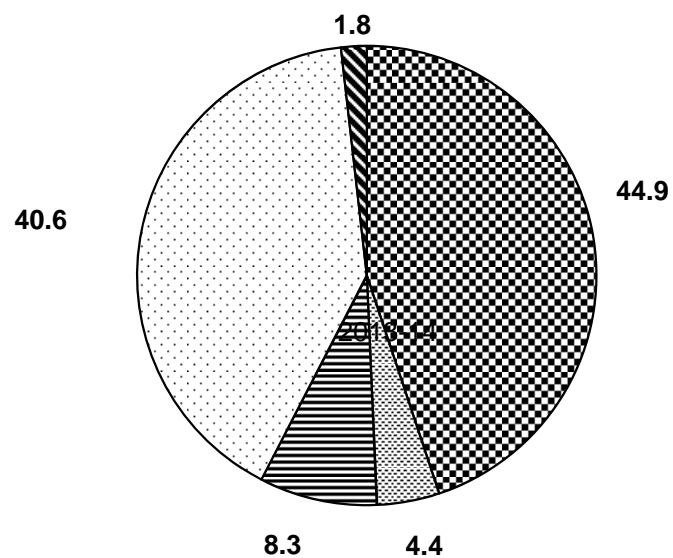
P: Provisional

Composition of Gross Fixed Capital Formation in Haryana by type of Assets at Current Prices

2004-05



2015-16



- ▣ Buildings
- ▣ Roads & Br
- ▣ Other Constructive
- ▣ Plants & Machinery
- ▣ Transport Equipment

TABLE 4.6

**ESTIMATES OF GROSS FIXED CAPITAL FORMATION IN HARYANA
BY TYPE OF ASSETS AT CONSTANT (2004-05) PRICES**

(₹ in Lakh)							
Sr. No.	Year	Buildings	Roads & Bridges	Other Construction	Plants & Machinery *	Transport Equipment	Total Gross Fixed Capital Formation
1	2004-05	578979 (39.9)	52267 (3.6)	225165 (15.5)	538315 (37.1)	57235 (3.9)	1451961 (100.0)
2	2005-06	670504 (41.6)	43306 (2.7)	163975 (10.2)	688889 (42.7)	46170 (2.8)	1612844 (100.0)
3	2006-07	681989 (37.0)	36421 (2.0)	407039 (22.0)	657951 (35.7)	60509 (3.3)	1843909 (100.0)
4	2007-08	754568 (33.8)	42614 (1.9)	366051 (16.4)	998151 (44.8)	69078 (3.1)	2230462 (100.0)
5	2008-09	955626 (38.7)	64035 (2.6)	332512 (13.4)	1055215 (42.7)	63373 (2.6)	2470761 (100.0)
6	2009-10	914079 (34.4)	90469 (3.4)	583735 (21.9)	1009752 (37.9)	63764 (2.4)	2661799 (100.0)
7	2010-11	865367 (28.7)	93226 (3.1)	366338 (12.2)	1608750 (53.5)	75340 (2.5)	3009021 (100.0)
8	2011-12	961937 (31.1)	139250 (4.5)	326981 (10.5)	1596234 (51.6)	71428 (2.3)	3095830 (100.0)
9	2012-13	965128 (30.1)	127470 (4.0)	279143 (8.7)	1751586 (54.7)	80797 (2.5)	3204124 (100.0)
10	2013-14	1180473 (35.2)	138212 (4.1)	274669 (8.2)	1687243 (50.2)	77826 (2.3)	3358423 (100.0)
11	2014-15	1306610 (36.1)	111298 (3.1)	361834 (10.0)	1759825 (48.7)	76250 (2.1)	3615817 (100.0)
							0.0
12	2015-16(P)	1385444 (35.7)	135980 (3.5)	296032 (7.6)	1982553 (51.0)	85132 (2.2)	3885141 (100.0)

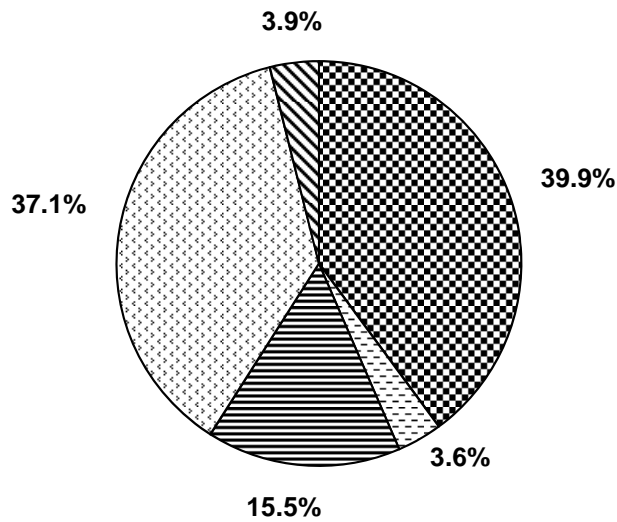
* Items of other equipments are included under " plants & machinery"

Note: Figures in bracket are percentage to total

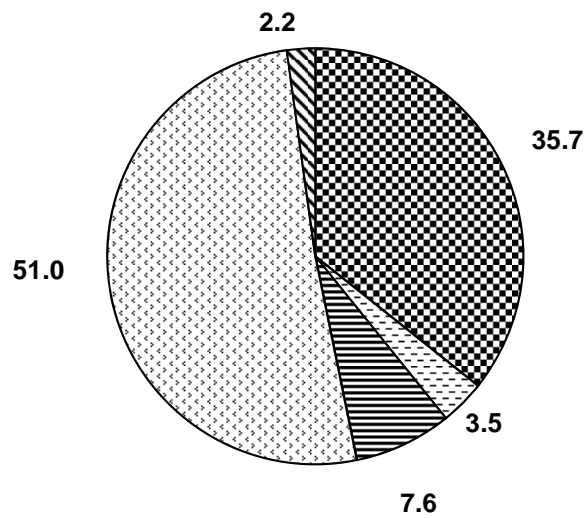
P: Provisional

Composition of Gross Fixed Capital Formation in Haryana by type of Assets at Constant (2004-05) Prices

2004-05



2015-16



- Buildings
- Roads & Bridges
- Other Construction
- Plants & Machinery
- Transport Equipment

TABLE 4.7

**COMPOSITION OF GROSS FIXED CAPITAL FORMATION IN HARYANA
BY INDUSTRY OF USE AT CURRENT PRICES**

Sr. No.	Industry	(Percent)											
		2004-05	2005-06	2006-07	2007-08	2008-09	2009-10	2010-11	2011-12	2012-13	2013-14	2014-15	2015-16(P)
1	Agriculture	7.8	7.8	8.2	9.3	9.2	10.1	10.4	12.8	15.7	17.8	18.6	20.2
2	Forestry	1.2	0.4	0.3	0.3	0.3	0.2	0.2	0.1	0.2	0.2	0.2	0.2
3	Fishing	0.0	0.0	0.0	0.0	0.0	0.0	0.0	0.0	0.0	0.0	0.0	0.0
4	Mining & Quarrying	0.3	0.3	0.3	0.2	0.2	0.1	0.0	0.0	0.0	0.0	0.0	0.0
5	Manufacturing	45.0	44.8	43.9	43.0	41.1	35.8	36.6	41.2	41.5	39.3	37.5	35.6
6	Electricity, Gas and Water Supply	8.0	9.5	12.1	11.6	14.2	13.0	16.5	10.8	7.1	5.4	5.8	5.6
7	Construction	2.4	2.2	2.0	2.6	2.2	2.8	2.2	2.3	2.7	3.2	3.4	2.5
8	Trade, Hotels & Restaurants	0.6	0.6	0.5	0.5	1.2	1.1	1.0	0.9	1.0	1.3	1.6	1.3
9	Transport, Storage & Communication	6.0	7.4	7.0	7.3	7.8	8.9	7.4	6.3	5.8	5.5	5.2	6.5
10	Banking & Insurance	1.3	1.0	0.8	0.9	0.5	0.8	0.8	0.6	0.9	0.9	1.0	1.0
11	Real Estate, Ownership of Dwellings and Business services (only Residential Buildings Part)	16.8	15.6	14.5	12.8	12.3	11.8	11.5	11.8	12.2	12.3	11.8	11.4
12	Public Administration	9.3	9.1	9.1	10.0	9.5	13.7	12.1	11.6	11.5	12.4	13.3	14.1
13	Other Services	1.3	1.3	1.3	1.5	1.5	1.7	1.3	1.6	1.4	1.7	1.6	1.6
Total		100.0	100.0	100.0	100.0	100.0	100.0	100.0	100.0	100.0	100.0	100.0	100.0

P: Provisional

TABLE 4.8

**COMPOSITION OF GROSS FIXED CAPITAL FORMATION IN HARYANA
BY INDUSTRY OF USE AT CONSTANT (2004-05) PRICES**

Sr. No.	Industry	(Percent)											
		2004-05	2005-06	2006-07	2007-08	2008-09	2009-10	2010-11	2011-12	2012-13	2013-14	2014-15	2015-16(P)
1	Agriculture	7.8	7.7	8.3	9.1	8.7	9.0	8.3	9.4	10.5	11.5	11.9	12.2
2	Forestry	1.2	0.4	0.3	0.3	0.3	0.2	0.2	0.1	0.2	0.1	0.1	0.1
3	Fishing	0.0	0.0	0.0	0.0	0.0	0.0	0.0	0.0	0.0	0.0	0.0	0.0
4	Mining & Quarrying	0.3	0.3	0.3	0.2	0.2	0.1	0.0	0.0	0.0	0.0	0.0	0.0
5	Manufacturing	45.0	44.8	43.8	43.5	41.6	37.6	39.6	46.1	47.9	46.8	44.7	43.5
6	Electricity, Gas and Water Supply	8.0	9.5	12.2	11.8	15.2	12.6	17.5	11.9	8.9	7.0	7.7	7.4
7	Construction	2.4	2.3	2.1	2.5	2.1	2.7	1.8	2.0	2.4	2.9	2.9	2.3
8	Trade, Hotels & Restaurants	0.6	0.6	0.5	0.5	1.1	1.1	1.0	0.9	1.0	1.6	2.0	1.6
9	Transport, Storage & Communication	6.0	7.4	7.0	7.5	8.1	9.5	7.9	7.0	6.6	6.4	6.1	7.4
10	Banking & Insurance	1.3	1.0	0.8	1.0	0.5	0.9	0.9	0.7	1.0	1.1	1.1	1.1
11	Real Estate, Ownership of Dwellings and Business services (only Residential Buildings Part)	16.8	15.6	14.3	12.3	11.6	11.2	10.2	10.3	10.2	10.2	10.1	10.0
12	Public Administration	9.3	9.1	9.1	9.9	9.2	13.4	11.4	10.2	10.0	10.8	11.9	12.9
13	Other Services	1.3	1.3	1.3	1.4	1.4	1.7	1.2	1.4	1.3	1.6	1.5	1.5
Total		100.0	100.0	100.0	100.0	100.0	100.0	100.0	100.0	100.0	100.0	100.0	100.0

P: Provisional

TABLE 4.9

**PERCENTAGE INCREASE/DECREASE OVER THE PREVIOUS YEAR IN
GROSS FIXED CAPITAL FORMATION IN HARYANA BY INDUSTRY OF USE
AT CURRENT PRICES**

(Percent)

Sr. No.	Industry	2005-06	2006-07	2007-08	2008-09	2009-10	2010-11	2011-12	2012-13	2013-14	2014-15	2015-16(P)
1	Agriculture	15.0	28.3	47.8	18.0	25.3	21.4	38.8	36.0	25.9	15.7	18.3
2	Forestry	-60.5	-0.1	8.0	26.1	-23.9	-10.2	4.6	43.4	-2.5	17.9	2.2
3	Fishing	98.0	-32.6	51.5	24.1	-1.6	-6.7	-23.9	-41.4	10.2	5.3	38.2
4	Mining & Quarrying	3.3	3.4	6.3	0.4	-65.5	-95.3	-11.2	150.6	-81.4	-27	-25.9
5	Manufacturing	14.1	19.5	27.8	14.3	-0.9	21.0	26.9	11.5	5.5	5.4	3.3
	5.1 Registered	17.8	23.0	39.1	18.2	-6.4	26.1	29.0	9.2	5.5	5.4	3.3
	5.2 Un-registered	9.4	14.5	11.0	7.0	10.1	11.9	22.9	16.1	5.5	5.4	3.3
6	Electricity, Gas and Water Supply	35.4	55.5	24.9	46.9	3.9	50.1	-26.4	-26.7	-16.2	19.3	5.1
7	Construction	5.4	6.9	70.6	3.2	43.1	-6.4	14.0	35.7	31.5	13.8	-17.1
8	Trade, Hotels & Restaurants	7.8	3.9	33.6	189.2	6.6	2.6	8.9	21.0	37.5	41.5	-11.7
	8.1 Trade	7.6	1.6	57.4	269.8	8.4	2.2	8.1	21.1	43.2	43.7	,-13.5
	8.2 Hotels & Restaurants	8.1	7.1	3.0	30.6	-3.6	5.0	13.7	20.8	4.1	24	5.0
9	Transport, Storage & Communication	41.3	14.0	37.6	27.3	29.9	-0.9	-5.2	1.9	6.7	4.7	34.3
	9.1 Railways	541.7	7.3	122.2	-56.8	81.0	5.9	-58.7	63.0	6.9	3.7	167.1
	9.2 Transport by Other means	-7.3	47.2	2.3	20.5	-17.1	26.1	4.0	8.6	6.5	1.5	16.3
	9.3 Storage	-10.2	85.9	34.1	-52.3	1253.2	75.4	-72.8	41.6	13.5	48.9	17.8
	9.4 Communication	22.6	2.2	15.9	116.1	29.7	-11.1	15.0	-7.8	6.5	4.6	12.3
10	Banking & Insurance	-15.4	7.1	44.4	-35.4	83.3	22.2	-13.8	51.1	19.8	16.9	9.8
11	Real Estate, Ownership of Dwellings and Business services (only Residential Buildings Part)	6.4	13.2	15.5	15.0	9.1	15.4	15.7	14.4	12.3	6.0	5.0
12	Public Administration	12.4	21.5	44.5	13.3	64.0	4.5	7.2	10.3	19.5	19.0	15.3
13	Other Services	13.6	28.3	42.3	23.0	33.3	-10.0	32.2	0.2	36.3	4.6	8.1
	Total	14.5	21.8	30.6	19.6	13.8	18.3	12.5	10.9	11.2	10.5	8.8

P: Provisional

TABLE 4.10

**PERCENTAGE INCREASE/DECREASE OVER THE PREVIOUS YEAR IN
GROSS FIXED CAPITAL FORMATION IN HARYANA BY INDUSTRY OF USE
AT CONSTANT (2004-05) PRICES**

Sr. No.	Industry	(Percent)										
		2005-06	2006-07	2007-08	2008-09	2009-10	2010-11	2011-12	2012-13	2013-14	2014-15	2015-16(P)
1	Agriculture	9.9	22.9	33.1	5.2	12.1	3.7	17.2	15.4	14.3	11.7	10.5
2	Forestry	-61.6	-5.8	-3.3	13.5	-27.9	-19.8	-5.6	32.7	-6.8	13.2	3.5
3	Fishing	92.3	-36.3	35.9	12.7	-5.3	-18.3	-30.5	-44.8	-13.3	2.1	52.3
4	Mining & Quarrying	1.0	-3.9	-3.8	-9.6	-64.0	-95.5	-21.5	196.0	-84.1	-37.5	-13.3
5	Manufacturing	10.7	11.7	20.3	5.8	-2.6	19.1	19.7	7.6	2.4	2.9	4.4
	5.1 Registered	13.9	15.4	32.6	9.6	-6.1	26.2	23.1	7.7	2.4	2.9	4.4
	5.2 Un-registered	6.5	6.5	2.0	-1.4	5.1	5.5	11.7	7.4	2.4	2.9	4.4
6	Electricity, Gas and Water Supply	31.2	47.0	17.2	42.1	-10.3	56.4	-30.1	-22.0	-17.7	17.2	4.1
7	Construction	3.1	0.3	52.7	-7.0	35.5	-17.1	5.4	25.5	24.3	9.4	-16.3
8	Trade, Hotels & Restaurants	5.1	-1.7	28.7	149.5	2.9	-3.4	0.8	15.5	60.2	38.6	-14.4
	8.1 Trade	4.8	-2.2	55.4	208.4	4.9	-3.6	0.6	16.8	68.5	40.2	-15.7
	8.2 Hotels & Restaurants	5.6	-1.1	-6.9	18.0	-9.0	-1.9	2.6	7.3	1.5	20.0	4.8
9	Transport, Storage & Communication	37.1	8.1	29.0	20.5	25.7	-5.9	-9.1	-3.0	2.6	1.7	31.7
	9.1 Railways	523.2	-0.1	106.5	-59.6	74.1	0.4	-61.7	52.9	3.4	0.9	167.7
	9.2 Transport by Other means	-9.8	43.3	-0.6	14.1	-19.6	22.2	-1.5	3.3	4.3	0.0	10.9
	9.3 Storage	-12.5	62.7	29.1	-55.0	1160.0	60.9	-76.6	32.8	5.7	41.0	20.4
	9.4 Communication	18.7	-3.7	8.4	104.3	27.5	-15.8	9.7	-11.5	1.8	1.5	12.6
10	Banking & Insurance	-17.8	0.3	37.5	-40.8	88.0	13.3	-17.1	42.5	15.1	9.8	8.0
11	Real Estate, Ownership of Dwellings and Business services (only Residential Buildings Part)	3.6	4.8	3.9	4.2	4.1	2.6	4.0	2.9	5.0	6.2	6.4
12	Public Administration	9.1	14.7	30.4	3.4	57.5	-4.1	-8.0	1.6	13.0	18.6	16.0
13	Other Services	10.6	19.6	28.7	11.6	28.1	-18.5	19.5	-6.4	33.5	0.5	7.7
Total		11.1	14.3	21.0	10.8	7.7	13.0	2.9	3.5	4.8	7.7	7.4

P: Provisional

TABLE 4.11

**ESTIMATES OF GROSS FIXED CAPITAL FORMATION IN HARYANA
BY INDUSTRY OF USE FOR 2004-05 AT CURRENT PRICES**

								₹ in Lakh)
Sr. No.	Industry	Buildings	Roads & Bridges	Other Construction	Plant & Machinery	Transport Equipments	Other Equipments	Total G.F.C.F.
1	Agriculture	5568	8258	64361	32375	96	2403	113061
2	Forestry	94	0	16767	141	53	105	17160
3	Fishing	0	0	342	21	0	28	391
4	Mining & Quarrying	9	0	0	349	92	4335	4785
5	Manufacturing	244740	0	0	382168	13911	12031	652850
	I) Registered	44794	0	0	320866	734	0	366394
	ii) Un-registered	199946	0	0	61302	13177	12031	286456
6	Electricity, Gas and Water Supply	39597	0	39309	23365	100	14319	116690
7	Construction	708	0	34429	226	22	129	35514
8	Trade, Hotels & Restaurants	2688	237	373	136	3208	1979	8621
	I) Trade	348	237	373	59	3135	818	4970
	ii) Hotels & Restaurants	2340	0	0	77	73	1161	3651
9	Transport, Storage & Communication	1445	0	21217	35725	25419	3555	87361
	I) Railways	190	0	4062	660	0	0	4912
	ii) Transport by Other means	1029	0	10	105	25388	3456	29988
	iii) Storage	226	0	27	177	31	99	560
	iv) Communication	0	0	17118	34783	0	0	51901
10	Banking & Insurance	2415	0	109	4146	12253	0	18923
11	Real Estate, Ownership of Dwellings and Business services (only Residential Buildings Part)	243444	0	0	0	0	72	243516
12	Public Administration	30441	43216	46116	3741	1735	9502	134751
13	Other Services	7830	556	2142	3541	346	3923	18338
Total		578979	52267	225165	485934	57235	52381	1451961

TABLE 4.12

**ESTIMATES OF GROSS FIXED CAPITAL FORMATION IN HARYANA
BY INDUSTRY OF USE FOR 2005-06 AT CURRENT PRICES**

₹ in Lakh)

Sr. No.	Industry	Buildings	Roads & Bridges	Other Construction	Plant & Machinery	Transport Equipments	Other Equipments	Total G.F.C.F.
1	Agriculture	38160	5980	57615	25447	282	2582	130066
2	Forestry	38	0	6553	41	9	143	6784
3	Fishing	0	0	706	41	0	27	774
4	Mining & Quarrying	42	151	27	112	21	4591	4944
5	Manufacturing	271921	177	759	418078	15281	38739	744955
	I) Registered	53180	177	759	351014	865	25577	431572
	ii) Un-registered	218741	0	0	67064	14416	13162	313383
6	Electricity, Gas and Water Supply	19254	0	34396	87980	159	16213	158002
7	Construction	2668	15	2125	97	101	32424	37430
8	Trade, Hotels & Restaurants	2878	24	1099	162	3329	1803	9295
	I) Trade	191	24	1099	90	3329	616	5349
	ii) Hotels & Restaurants	2687	0	0	72	0	1187	3946
9	Transport, Storage & Communication	19911	0	24401	52632	26432	69	123445
	I) Railways	17966	0	0	13554	0	0	31520
	ii) Transport by Other means	1140	0	17	252	26385	0	27794
	iii) Storage	234	0	18	158	24	69	503
	iv) Communication	571	0	24366	38668	23	0	63628
10	Banking & Insurance	1487	0	2765	6646	317	4791	16006
11	Real Estate, Ownership of Dwellings and Business services (only Residential Buildings Part)	259082	0	0	5	0	2	259089
12	Public Administration	62762	38637	38510	5714	1210	4632	151465
13	Other Services	9526	11	362	5569	257	5106	20831
Total		687729	44995	169318	602524	47398	111122	1663086

TABLE 4.13

**ESTIMATES OF GROSS FIXED CAPITAL FORMATION IN HARYANA
BY INDUSTRY OF USE FOR 2005-06 AT CONSTANT (2004-05) PRICES**

₹ in Lakh)

Sr. No.	Industry	Buildings	Roads & Bridges	Other Construction	Plant & Machinery	Transport Equipments	Other Equipments	Total G.F.C.F.
1	Agriculture	37164	5756	55420	25552	294	107	124293
2	Forestry	37	0	6368	40	9	140	6594
3	Fishing	0	0	686	40	0	26	752
4	Mining & Quarrying	41	145	26	108	20	4492	4832
5	Manufacturing	265290	170	738	403551	14879	37905	722533
	I) Registered	51884	170	738	338817	842	25026	417477
	ii) Un-registered	213406	0	0	64734	14037	12879	305056
6	Electricity, Gas and Water Supply	18784	0	33427	84923	155	15864	153153
7	Construction	2603	14	2065	94	99	31726	36601
8	Trade, Hotels & Restaurants	2809	23	1068	157	3241	1765	9063
	I) Trade	187	23	1068	87	3241	603	5209
	ii) Hotels & Restaurants	2622	0	0	70	0	1162	3854
9	Transport, Storage & Communication	19426	0	23714	50804	25736	68	119748
	I) Railways	17528	0	0	13083	0	0	30611
	ii) Transport by Other means	1112	0	17	243	25691	0	27063
	iii) Storage	229	0	17	153	23	68	490
	iv) Communication	557	0	23680	37325	22	0	61584
10	Banking & Insurance	1451	0	2687	6415	309	4687	15549
11	Real Estate, Ownership of Dwellings and Business services (only Residential Buildings Part)	252374	0	0	5	0	2	252381
12	Public Administration	61232	37187	37425	5515	1178	4532	147069
13	Other Services	9293	11	351	5375	250	4996	20276
Total		670504	43306	163975	582579	46170	106310	1612844

TABLE 4.14

**ESTIMATES OF GROSS FIXED CAPITAL FORMATION IN HARYANA
BY INDUSTRY OF USE FOR 2006-07 AT CURRENT PRICES**

₹ in Lakh)

Sr. No.	Industry	Buildings	Roads & Bridges	Other Construction	Plant & Machinery	Transport Equipments	Other Equipments	Total G.F.C.F.
1	Agriculture	36090	724	99338	29416	310	1013	166891
2	Forestry	65	0	6294	77	16	324	6776
3	Fishing	0	0	459	20	0	43	522
4	Mining & Quarrying	43	156	28	116	21	4748	5112
5	Manufacturing	312734	177	1296	514442	18628	42603	889880
	I) Registered	62202	177	1296	437631	2117	27528	530951
	ii) Un-registered	250532	0	0	76811	16511	15075	358929
6	Electricity, Gas and Water Supply	5809	0	212488	26629	355	402	245683
7	Construction	7684	5069	24770	132	10	2343	40008
8	Trade, Hotels & Restaurants	4515	175	81	246	3568	1077	9662
	I) Trade	835	175	81	163	3568	614	5436
	ii) Hotels & Restaurants	3680	0	0	83	0	463	4226
9	Transport, Storage & Communication	22402	0	24143	56443	37589	132	140709
	I) Railways	19278	0	0	14543	0	0	33821
	ii) Transport by Other means	2076	0	0	1283	37545	0	40904
	iii) Storage	599	0	20	159	25	132	935
	iv) Communication	449	0	24123	40458	19	0	65049
10	Banking & Insurance	1950	0	3610	5716	346	5518	17140
11	Real Estate, Ownership of Dwellings and Business services (only Residential Buildings Part)	293304	0	0	7	0	2	293313
12	Public Administration	63222	31838	69757	5775	2311	11111	184014
13	Other Services	8202	320	2992	9732	380	5096	26722
Total		756020	38459	445256	648751	63534	74412	2026432

TABLE 4.15

**ESTIMATES OF GROSS FIXED CAPITAL FORMATION IN HARYANA BY
INDUSTRY OF USE FOR 2006-07 AT CONSTANT (2004-05) PRICES**

							₹ in Lakh)	
Sr. No.	Industry	Buildings	Roads & Bridges	Other Construction	Plant & Machinery	Transport Equipments	Other Equipments	Total G.F.C.F.
1	Agriculture	33154	686	89682	28019	295	918	152754
2	Forestry	59	0	5774	70	15	294	6212
3	Fishing	0	0	422	18	0	39	479
4	Mining & Quarrying	39	148	26	106	20	4305	4644
5	Manufacturing	281743	168	1189	467251	17741	38624	806716
	I) Registered	56038	168	1189	397486	2016	24957	481854
	ii) Un-registered	225705	0	0	69765	15725	13667	324862
6	Electricity, Gas and Water Supply	5233	0	194943	24186	338	364	225064
7	Construction	6922	4800	22725	120	10	2124	36701
8	Trade, Hotels & Restaurants	4068	166	74	223	3398	976	8905
	I) Trade	753	166	74	148	3398	556	5095
	ii) Hotels & Restaurants	3315	0	0	75	0	420	3810
9	Transport, Storage & Communication	20184	0	22150	51265	35799	69	129467
	I) Railways	17368	0	0	13209	0	0	30577
	ii) Transport by Other means	1871	0	0	1165	35757	0	38793
	iii) Storage	540	0	19	145	24	69	797
	iv) Communication	405	0	22131	36746	18	0	59300
10	Banking & Insurance	1757	0	3312	5192	330	5003	15594
11	Real Estate, Ownership of Dwellings and Business services (only Residential Buildings Part)	264484	0	0	6	0	2	264492
12	Public Administration	56957	30150	63997	5245	2201	10073	168623
13	Other Services	7389	303	2745	8839	362	4620	24258
Total		681989	36421	407039	590540	60509	67411	1843909

TABLE 4.16

**ESTIMATES OF GROSS FIXED CAPITAL FORMATION IN HARYANA
BY INDUSTRY OF USE FOR 2007-08 AT CURRENT PRICES**

								₹ in Lakh)
Sr. No.	Industry	Buildings	Roads & Bridges	Other Construction	Plant & Machinery	Transport Equipments	Other Equipments	Total G.F.C.F.
1	Agriculture	63277	9553	138061	33203	208	2414	246716
2	Forestry	47	0	6958	79	34	198	7316
3	Fishing	0	0	685	57	0	49	791
4	Mining & Quarrying	55	118	35	145	132	4948	5433
5	Manufacturing	369133	0	131	687096	19797	60952	1137109
	I) Registered	91008	0	131	601825	1468	44217	738649
	ii) Un-registered	278125	0	0	85271	18329	16735	398460
6	Electricity, Gas and Water Supply	7863	0	80232	217885	236	659	306875
7	Construction	1271	0	61153	1230	319	4299	68272
8	Trade, Hotels & Restaurants	4605	151	5	1195	5486	1466	12908
	I) Trade	868	151	5	1071	5486	975	8556
	ii) Hotels & Restaurants	3737	0	0	124	0	491	4352
9	Transport, Storage & Communication	45750	0	30858	78555	38314	145	193622
	I) Railways	42844	0	0	32321	0	0	75165
	ii) Transport by Other means	2008	0	0	1558	38269	0	41835
	iii) Storage	898	0	110	56	45	145	1254
	iv) Communication	0	0	30748	44620	0	0	75368
10	Banking & Insurance	1652	0	26	10972	5243	6849	24742
11	Real Estate, Ownership of Dwellings and Business services (only Residential Buildings Part)	338653	0	0	5	0	1	338659
12	Public Administration	70023	39756	128939	7874	3905	15388	265885
13	Other Services	26268	26	1825	3915	391	5589	38014
Total		928597	49604	448908	1042211	74065	102957	2646342

TABLE 4.17

**ESTIMATES OF GROSS FIXED CAPITAL FORMATION IN HARYANA
BY INDUSTRY OF USE FOR 2007-08 AT CONSTANT (2004-05) PRICES**

₹ in Lakh)

Sr. No.	Industry	Buildings	Roads & Bridges	Other Construction	Plant & Machinery	Transport Equipments	Other Equipments	Total G.F.C.F.
1	Agriculture	51972	8207	111259	29718	193	1972	203321
2	Forestry	38	0	5704	69	32	162	6005
3	Fishing	0	0	561	50	0	40	651
4	Mining & Quarrying	45	101	29	127	123	4042	4467
5	Manufacturing	299865	0	107	602188	18398	49797	970355
	I) Registered	73931	0	107	527454	1364	36125	638981
	ii) Un-registered	225934	0	0	74734	17034	13672	331374
6	Electricity, Gas and Water Supply	6387	0	65764	190959	219	538	263867
7	Construction	1032	0	50125	1077	296	3512	56042
8	Trade, Hotels & Restaurants	3741	130	4	1048	5343	1198	11464
	I) Trade	705	130	4	939	5343	797	7918
	ii) Hotels & Restaurants	3036	0	0	109	0	401	3546
9	Transport, Storage & Communication	37164	0	25293	68847	35608	119	167031
	I) Railways	34804	0	0	28327	0	0	63131
	ii) Transport by Other means	1631	0	0	1365	35566	0	38562
	iii) Storage	729	0	90	49	42	119	1029
	iv) Communication	0	0	25203	39106	0	0	64309
10	Banking & Insurance	1342	0	21	9616	4873	5596	21448
11	Real Estate, Ownership of Dwellings and Business services (only Residential Buildings Part)	274761	0	0	4	0	1	274766
12	Public Administration	56883	34154	105688	6901	3629	12572	219827
13	Other Services	21338	22	1496	3431	364	4567	31218
Total		754568	42614	366051	914035	69078	84116	2230462

TABLE 4.18

**ESTIMATES OF GROSS FIXED CAPITAL FORMATION IN HARYANA
BY INDUSTRY OF USE FOR 2008-09 AT CURRENT PRICES**

₹ in Lakh)

Sr. No.	Industry	Buildings	Roads & Bridges	Other Construction	Plant & Machinery	Transport Equipments	Other Equipments	Total G.F.C.F.
1	Agriculture	107862	8609	132610	38124	231	3795	291231
2	Forestry	2	0	9080	44	18	80	9224
3	Fishing	247	0	559	98	0	78	982
4	Mining & Quarrying	49	139	33	133	250	4849	5453
5	Manufacturing	655424	868	88	594539	21369	27546	1299834
	I) Registered	357704	868	88	503261	1748	9632	873301
	ii) Un-registered	297720	0	0	91278	19621	17914	426533
6	Electricity, Gas and Water Supply	8497	0	68554	373018	236	390	450695
7	Construction	2652	0	66734	788	109	190	70473
8	Trade, Hotels & Restaurants	20468	0	308	5101	4335	7112	37324
	I) Trade	15554	0	308	4996	4313	6468	31639
	ii) Hotels & Restaurants	4914	0	0	105	22	644	5685
9	Transport, Storage & Communication	20839	0	64891	118983	41652	49	246414
	I) Railways	18530	0	0	13978	0	0	32508
	ii) Transport by Other means	2000	0	57	6740	41625	0	50422
	iii) Storage	309	0	49	164	27	49	598
	iv) Communication	0	0	64785	98101	0	0	162886
10	Banking & Insurance	1084	0	201	8224	177	6286	15972
11	Real Estate, Ownership of Dwellings and Business services (only Residential Buildings Part)	389551	0	0	15	0	1	389567
12	Public Administration	69619	73247	102158	21486	3283	31516	301309
13	Other Services	28858	64	8166	4298	140	5216	46742
Total		1305152	82927	453382	1164851	71800	87108	3165220

TABLE 4.19

**ESTIMATES OF GROSS FIXED CAPITAL FORMATION IN HARYANA
BY INDUSTRY OF USE FOR 2008-09 AT CONSTANT (2004-05) PRICES**

₹ in Lakh)

Sr. No.	Industry	Buildings	Roads & Bridges	Other Construction	Plant & Machinery	Transport Equipments	Other Equipments	Total G.F.C.F.
1	Agriculture	76672	6648	95781	31897	204	2770	213972
2	Forestry	1	0	6701	38	16	58	6814
3	Fishing	181	0	413	83	0	57	734
4	Mining & Quarrying	36	107	24	113	221	3539	4040
5	Manufacturing	480869	670	65	506423	18860	20106	1026993
	I) Registered	262439	670	65	428673	1542	7030	700419
	ii) Un-registered	218430	0	0	77750	17318	13076	326574
6	Electricity, Gas and Water Supply	6234	0	50593	317733	208	285	375053
7	Construction	1946	0	49250	671	97	138	52102
8	Trade, Hotels & Restaurants	15016	0	227	4346	3826	5191	28606
	I) Trade	11411	0	227	4256	3807	4721	24422
	ii) Hotels & Restaurants	3605	0	0	90	19	470	4184
9	Transport, Storage & Communication	15289	0	47890	101349	36763	36	201327
	I) Railways	13595	0	0	11906	0	0	25501
	ii) Transport by Other means	1467	0	42	5741	36739	0	43989
	iii) Storage	227	0	36	140	24	36	463
	iv) Communication	0	0	47812	83562	0	0	131374
10	Banking & Insurance	795	0	148	7005	156	4589	12693
11	Real Estate, Ownership of Dwellings and Business services (only Residential Buildings Part)	286336	0	0	13	0	1	286350
12	Public Administration	51078	56562	75393	18302	2898	23004	227237
13	Other Services	21173	49	6027	3661	124	3807	34841
Total		955626	64036	332512	991634	63373	63581	2470762

TABLE 4.20

**ESTIMATES OF GROSS FIXED CAPITAL FORMATION IN HARYANA
BY INDUSTRY OF USE FOR 2009-10 AT CURRENT PRICES**

₹ in Lakh)

Sr. No.	Industry	Buildings	Roads & Bridges	Other Construction	Plant & Machinery	Transport Equipments	Other Equipments	Total G.F.C.F.
1	Agriculture	169072	11216	140295	40433	220	3725	364961
2	Forestry	0	0	6920	27	4	71	7022
3	Fishing	8	0	778	101	0	79	966
4	Mining & Quarrying	0	0	9	11	30	1829	1879
5	Manufacturing	525664	0	0	674921	23150	63881	1287616
	I) Registered	197752	0	0	574386	1540	44150	817828
	ii) Un-registered	327912	0	0	100535	21610	19731	469788
6	Electricity, Gas and Water Supply	8232	0	393968	65046	409	580	468235
7	Construction	286	0	99238	1122	23	212	100881
8	Trade, Hotels & Restaurants	22443	0	479	4568	4566	7727	39783
	I) Trade	17544	0	479	4488	4544	7250	34305
	ii) Hotels & Restaurants	4899	0	0	80	22	477	5478
9	Transport, Storage & Communication	40445	0	77580	161813	38227	1940	320005
	I) Railways	33545	0	0	25306	0	0	58851
	ii) Transport by Other means	2225	0	15	1428	38120	0	41788
	iii) Storage	4675	0	758	612	107	1940	8092
	iv) Communication	0	0	76807	134467	0	0	211274
10	Banking & Insurance	1227	0	233	17955	471	9388	29274
11	Real Estate, Ownership of Dwellings and Business services (only Residential Buildings Part)	425146	0	0	16	0	2	425164
12	Public Administration	115783	116582	114919	43609	6735	96525	494153
13	Other Services	35718	1935	10121	6843	641	7062	62320
Total		1344024	129733	844540	1016465	74476	193021	3602259

TABLE 4.21

**ESTIMATES OF GROSS FIXED CAPITAL FORMATION IN HARYANA
BY INDUSTRY OF USE FOR 2009-10 AT CONSTANT (2004-05) PRICES**

₹ in Lakh)

Sr. No.	Industry	Buildings	Roads & Bridges	Other Construction	Plant & Machinery	Transport Equipments	Other Equipments	Total G.F.C.F.
1	Agriculture	103137	7821	92287	33557	189	2877	239868
2	Forestry	0	0	4829	23	3	55	4910
3	Fishing	5	0	543	86	0	61	695
4	Mining & Quarrying	0	0	6	9	26	1412	1453
5	Manufacturing	359552	0	0	571967	19821	49328	1000668
	I) Registered	135262	0	0	486768	1319	34092	657441
	ii) Un-registered	224290	0	0	85199	18502	15236	343227
6	Electricity, Gas and Water Supply	5630	0	274925	55124	350	448	336477
7	Construction	196	0	69252	951	19	163	70581
8	Trade, Hotels & Restaurants	15351	0	334	3871	3910	5967	29433
	I) Trade	12000	0	334	3803	3891	5598	25626
	ii) Hotels & Restaurants	3351	0	0	68	19	369	3807
9	Transport, Storage & Communication	27665	0	54138	137129	32728	1498	253158
	I) Railways	22945	0	0	21446	0	0	44391
	ii) Transport by Other means	1522	0	10	1210	32637	0	35379
	iii) Storage	3198	0	529	518	91	1498	5834
	iv) Communication	0	0	53599	113955	0	0	167554
10	Banking & Insurance	839	0	163	15215	403	7249	23869
11	Real Estate, Ownership of Dwellings and Business services (only Residential Buildings Part)	298078	0	0	14	0	2	298094
12	Public Administration	79195	81298	80195	36957	5766	74537	357948
13	Other Services	24431	1350	7063	5799	549	5453	44645
Total		914079	90469	583735	860702	63764	149050	2661799

TABLE 4.22

**ESTIMATES OF GROSS FIXED CAPITAL FORMATION IN HARYANA
BY INDUSTRY OF USE FOR 2010-11 AT CURRENT PRICES**

₹ in Lakh)

Sr. No.	Industry	Buildings	Roads & Bridges	Other Construction	Plant & Machinery	Transport Equipments	Other Equipments	Total G.F.C.F.
1	Agriculture	259791	3583	74229	45780	61	59484	442928
2	Forestry	52	0	5998	126	14	117	6307
3	Fishing	39	0	764	18	0	80	901
4	Mining & Quarrying	0	0	0	7	10	72	89
5	Manufacturing	395598	0	41698	1010051	26950	83211	1557508
	I) Registered	28562	0	41698	897522	2761	61126	1031669
	ii) Un-registered	367036	0	0	112529	24189	22085	525839
6	Electricity, Gas and Water Supply	63914	0	194885	442541	1171	341	702852
7	Construction	284	0	93304	473	60	278	94399
8	Trade, Hotels & Restaurants	22375	0	479	4747	4963	8247	40811
	I) Trade	17849	0	479	4449	4927	7353	35057
	ii) Hotels & Restaurants	4526	0	0	298	36	894	5754
9	Transport, Storage & Communication	47270	0	67116	148471	49156	5047	317060
	I) Railways	36140	0	0	26171	0	0	62311
	ii) Transport by Other means	2480	0	178	952	49086	0	52696
	iii) Storage	8650	0	4	421	70	5047	14192
	iv) Communication	0	0	66934	120927	0	0	187861
10	Banking & Insurance	2795	0	474	16902	557	15055	35783
11	Real Estate, Ownership of Dwellings and Business services (only Residential Buildings Part)	490495	0	0	15	0	0	490510
12	Public Administration	107878	140883	105251	43449	7092	111778	516331
13	Other Services	32682	4323	8173	3646	758	6498	56080
Total		1423173	148789	592371	1716226	90792	290208	4261559

TABLE 4.23

**ESTIMATES OF GROSS FIXED CAPITAL FORMATION IN HARYANA
BY INDUSTRY OF USE FOR 2010-11 AT CONSTANT (2004-05) PRICES**

								₹ in Lakh)
Sr. No.	Industry	Buildings	Roads & Bridges	Other Construction	Plant & Machinery	Transport Equipments	Other Equipments	Total G.F.C.F.
1	Agriculture	132956	2245	45905	36939	51	30655	248751
2	Forestry	32	0	3709	104	12	83	3940
3	Fishing	24	0	472	15	0	57	568
4	Mining & Quarrying	0	0	0	6	8	51	65
5	Manufacturing	251651	0	25788	832689	22402	59141	1191671
	I) Registered	18168	0	25788	739920	2295	43444	829615
	ii) Un-registered	233483	0	0	92769	20107	15697	362056
6	Electricity, Gas and Water Supply	39846	0	120523	364832	973	242	526416
7	Construction	181	0	57702	390	50	197	58520
8	Trade, Hotels & Restaurants	14176	0	296	3968	4126	5861	28427
	I) Trade	11354	0	296	3722	4096	5226	24694
	ii) Hotels & Restaurants	2822	0	0	246	30	635	3733
9	Transport, Storage & Communication	29929	0	41506	122400	40861	3587	238283
	I) Railways	22990	0	0	21575	0	0	44565
	ii) Transport by Other means	1546	0	110	785	40803	0	43244
	iii) Storage	5393	0	2	347	58	3587	9387
	iv) Communication	0	0	41394	99693	0	0	141087
10	Banking & Insurance	1778	0	293	13934	332	10700	27037
11	Real Estate, Ownership of Dwellings and Business services (only Residential Buildings Part)	305794	0	0	12	0	0	305806
12	Public Administration	68625	88272	65090	35819	5895	79444	343145
13	Other Services	20375	2709	5054	3006	630	4618	36392
Total		865367	93226	366338	1414114	75340	194636	3009021

TABLE 4.24

**ESTIMATES OF GROSS FIXED CAPITAL FORMATION IN HARYANA
BY INDUSTRY OF USE FOR 2011-12 AT CURRENT PRICES**

₹ in Lakh)

Sr. No.	Industry	Buildings	Roads & Bridges	Other Construction	Plant & Machinery	Transport Equipments	Other Equipments	Total G.F.C.F.
1	Agriculture	409594	4019	88720	51313	86	60986	614718
2	Forestry	0	0	6147	148	31	269	6595
3	Fishing	0	0	568	30	0	88	686
4	Mining & Quarrying	0	0	0	5	0	74	79
5	Manufacturing	618687	0	1249	1288019	29722	39232	1976909
	I) Registered	167685	0	1249	1149746	0	12094	1330774
	ii) Un-registered	451002	0	0	138273	29722	27138	646135
6	Electricity, Gas and Water Supply	35858	0	149305	329460	0	2495	517118
7	Construction	11191	11748	63869	241	19	20579	107647
8	Trade, Hotels & Restaurants	23223	0	798	6004	7255	7171	44451
	I) Trade	17383	0	798	5900	6669	7161	37911
	ii) Hotels & Restaurants	5840	0	0	104	586	10	6540
9	Transport, Storage & Communication	21176	0	73007	154450	47599	4228	300460
	I) Railways	14663	0	0	11062	0	0	25725
	ii) Transport by Other means	3001	0	133	155	47590	3946	54825
	iii) Storage	3512	0	21	40	9	282	3864
	iv) Communication	0	0	72853	143193	0	0	216046
10	Banking & Insurance	1715	0	292	17278	519	11040	30844
11	Real Estate, Ownership of Dwellings and Business services (only Residential Buildings Part)	567449	0	0	12	0	1	567462
12	Public Administration	79162	230428	194662	7984	1923	39548	553707
13	Other Services	49127	0	11908	4283	1844	6987	74149
	Total	1817182	246195	590525	1859227	88998	192698	4794825

TABLE 4.25

**ESTIMATES OF GROSS FIXED CAPITAL FORMATION IN HARYANA
BY INDUSTRY OF USE FOR 2011-12 AT CONSTANT (2004-05) PRICES**

								₹ in Lakh)
Sr. No.	Industry	Buildings	Roads & Bridges	Other Construction	Plant & Machinery	Transport Equipments	Other Equipments	Total G.F.C.F.
1	Agriculture	173373	2273	49124	39587	69	27200	291626
2	Forestry	0	0	3403	118	25	173	3719
3	Fishing	0	0	315	24	0	56	395
4	Mining & Quarrying	0	0	0	4	0	47	51
5	Manufacturing	346603	0	692	1029591	23854	25101	1425841
	I) Registered	93941	0	692	919061	0	7738	1021432
	ii) Un-registered	252662	0	0	110530	23854	17363	404409
6	Electricity, Gas and Water Supply	20089	0	82672	263358	0	1596	367715
7	Construction	6269	6645	35365	193	15	13167	61654
8	Trade, Hotels & Restaurants	13009	0	442	4800	5822	4588	28661
	I) Trade	9738	0	442	4717	5352	4582	24831
	ii) Hotels & Restaurants	3271	0	0	83	470	6	3830
9	Transport, Storage & Communication	11864	0	40426	123462	38202	2705	216659
	I) Railways	8215	0	0	8843	0	0	17058
	ii) Transport by Other means	1681	0	74	124	38194	2525	42598
	iii) Storage	1968	0	12	33	8	180	2201
	iv) Communication	0	0	40340	114462	0	0	154802
10	Banking & Insurance	961	0	162	13811	417	7064	22415
11	Real Estate, Ownership of Dwellings and Business services (only Residential Buildings Part)	317899	0	0	10	0	0	317909
12	Public Administration	44348	130332	107786	6382	1544	25303	315695
13	Other Services	27522	0	6594	3424	1480	4470	43490
Total		961937	139250	326981	1484764	71428	111470	3095830

TABLE 4.26

**ESTIMATES OF GROSS FIXED CAPITAL FORMATION IN HARYANA
BY INDUSTRY OF USE FOR 2012-13 AT CURRENT PRICES**

₹ in Lakh)

Sr. No.	Industry	Buildings	Roads & Bridges	Other Construction	Plant & Machinery	Transport Equipments	Other Equipments	Total G.F.C.F.
1	Agriculture	634458	1054	76757	75646	303	47502	835720
2	Forestry	100	0	8873	213	40	229	9455
3	Fishing	0	0	347	37	0	18	402
4	Mining & Quarrying	0	0	3	160	21	14	198
5	Manufacturing	619716	0	13178	1491822	37336	41580	2203632
	I) Registered	95918	0	13178	1331231	2816	10062	1453205
	ii) Un-registered	523798	0	0	160591	34520	31518	750427
6	Electricity, Gas and Water Supply	14476	0	17315	346728	218	456	379193
7	Construction	4855	21533	93849	707	17	25154	146115
8	Trade, Hotels & Restaurants	24660	0	1315	7681	11201	8956	53813
	I) Trade	17623	0	1315	7455	11201	8315	45909
	ii) Hotels & Restaurants	7037	0	0	226	0	641	7904
9	Transport, Storage & Communication	29876	4	69879	149511	50684	6113	306067
	I) Railways	23906	0	0	18035	0	0	41941
	ii) Transport by Other means	3455	0	296	159	50531	5102	59543
	iii) Storage	2515	4	1762	27	153	1011	5472
	iv) Communication	0	0	67821	131290	0	0	199111
10	Banking & Insurance	3285	0	560	23371	745	18651	46612
11	Real Estate, Ownership of Dwellings and Business services (only Residential Buildings Part)	649369	0	0	11	0	2	649382
12	Public Administration	86971	224865	247199	15293	2899	33656	610883
13	Other Services	39087	91	15051	5334	1408	13330	74301
Total		2106853	247547	544326	2116514	104872	195661	5315773

TABLE 4.27

**ESTIMATES OF GROSS FIXED CAPITAL FORMATION IN HARYANA
BY INDUSTRY OF USE FOR 2012-13 AT CONSTANT (2004-05) PRICES**

₹ in Lakh)

Sr. No.	Industry	Buildings	Roads & Bridges	Other Construction	Plant & Machinery	Transport Equipments	Other Equipments	Total G.F.C.F.
1	Agriculture	223368	543	39362	54631	234	18293	336431
2	Forestry	50	0	4551	166	31	138	4936
3	Fishing	0	0	178	29	0	11	218
4	Mining & Quarrying	0	0	2	124	17	8	151
5	Manufacturing	312199	0	6759	1161855	28764	25033	1534610
	I) Registered	48321	0	6759	1036784	2169	6058	1100091
	ii) Un-registered	263878	0	0	125071	26595	18975	434519
6	Electricity, Gas and Water Supply	7292	0	8879	270037	168	275	286651
7	Construction	2446	11088	48128	550	13	15144	77369
8	Trade, Hotels & Restaurants	12423	0	674	5982	8629	5394	33102
	I) Trade	8878	0	674	5806	8629	5007	28994
	ii) Hotels & Restaurants	3545	0	0	176	0	387	4108
9	Transport, Storage & Communication	15051	2	35836	116443	39048	3681	210061
	I) Railways	12043	0	0	14046	0	0	26089
	ii) Transport by Other means	1741	0	152	124	38930	3072	44019
	iii) Storage	1267	2	904	22	118	609	2922
	iv) Communication	0	0	34780	102251	0	0	137031
10	Banking & Insurance	1655	0	287	18201	574	11229	31946
11	Real Estate, Ownership of Dwellings and Business services (only Residential Buildings Part)	327138	0	0	9	0	1	327148
12	Public Administration	43815	115790	126768	11910	2233	20262	320778
13	Other Services	19691	47	7719	4154	1086	8026	40723
Total		965128	127470	279143	1644091	80797	107495	3204124

TABLE 4.28

**ESTIMATES OF GROSS FIXED CAPITAL FORMATION IN HARYANA
BY INDUSTRY OF USE FOR 2013-14 AT CURRENT PRICES**

₹ in Lakh)

Sr. No.	Industry	Buildings	Roads & Bridges	Other Construction	Plant & Machinery	Transport Equipments	Other Equipments	Total G.F.C.F.
1	Agriculture	885396	2202	29615	71488	286	63526	1052513
2	Forestry	150	0	8695	184	29	160	9218
3	Fishing	0	0	300	41	0	20	361
4	Mining & Quarrying	0	1	10	17	0	9	37
5	Manufacturing	696536	0	10729	1528905	41006	47038	2324214
	I) Registered	144076	0	10729	1359526	4598	13795	1532724
	ii) Un-registered	552460	0	0	169379	36408	33243	791490
6	Electricity, Gas and Water Supply	16052	0	3208	296539	617	1423	317839
7	Construction	9146	19364	134809	326	87	28368	192100
8	Trade, Hotels & Restaurants	7885	0	156	54034	7563	4350	73988
	I) Trade	1091	0	156	53767	7412	3333	65759
	ii) Hotels & Restaurants	6794	0	0	267	151	1017	8229
9	Transport, Storage & Communication	34686	9	82002	150959	58479	395	326530
	I) Railways	25556	0	0	19279	0	0	44835
	ii) Transport by Other means	4245	0	627	110	58450	0	63432
	iii) Storage	4885	9	724	168	29	395	6210
	iv) Communication	0	0	80651	131402	0	0	212053
10	Banking & Insurance	3931	0	670	28010	893	22337	55841
11	Real Estate, Ownership of Dwellings and Business services (only Residential Buildings Part)	729144	0	0	9	0	59	729212
12	Public Administration	121104	268590	278471	23555	3854	34639	730213
13	Other Services	63944	2153	4711	14507	792	15181	101288
Total		2567974	292319	553376	2168574	113606	217505	5913354

P: Provisional

TABLE 4.29

**ESTIMATES OF GROSS FIXED CAPITAL FORMATION IN HARYANA
BY INDUSTRY OF USE FOR 2013-14 AT CONSTANT (2004-05) PRICES**

₹ in Lakh)

Sr. No.	Industry	Buildings	Roads & Bridges	Other Construction	Plant & Machinery	Transport Equipments	Other Equipments	Total G.F.C.F.
1	Agriculture	296668	1041	14559	49251	213	22645	384377
2	Forestry	72	0	4274	140	22	91	4599
3	Fishing	0	0	147	31	0	11	189
4	Mining & Quarrying	0	0	5	13	0	6	24
5	Manufacturing	416463	0	7886	1094418	23847	28826	1571440
	I) Registered	105890	0	7886	999199	3380	10138	1126493
	ii) Un-registered	310573	0	0	95219	20467	18688	444947
6	Electricity, Gas and Water Supply	7746	0	1577	225333	459	803	235918
7	Construction	4414	9156	66277	247	64	16009	96167
8	Trade, Hotels & Restaurants	3805	0	76	41059	5623	2457	53020
	I) Trade	526	0	76	40856	5511	1882	48851
	ii) Hotels & Restaurants	3279		0	203	112	575	4169
9	Transport, Storage & Communication	16740	4	40315	114712	43479	223	215473
	I) Railways	12334	0	0	14650	0	0	26984
	ii) Transport by Other means	2049	0	308	84	43457	0	45898
	iii) Storage	2357	4	356	128	22	223	3090
	iv) Communication	0	0	39651	99850	0	0	139501
10	Banking & Insurance	1897	0	329	21285	664	12606	36781
11	Real Estate, Ownership of Dwellings and Business services (only Residential Buildings Part)	343360	0	0	7	0	33	343400
12	Public Administration	58447	126993	136908	17899	2866	19548	362661
13	Other Services	30861	1018	2316	11023	589	8567	54374
	Total	1180473	138212	274669	1575418	77826	111825	3358423

P: Provisional

TABLE 4.30

**ESTIMATES OF GROSS FIXED CAPITAL FORMATION IN HARYANA
BY INDUSTRY OF USE AT CURRENT PRICES 2014-15**

₹ in Lakh)

Sr. Industry No.	Buildings	Roads & Bridges	Other Construction	Plant & Machinery	Transport Equipments	Other Equipments	Total G.F.C.F.
1 Agriculture	1043993	4060	26098	78220	209	65136	1217716
2 Forestry	150	0	10109	310	45	258	10872
3 Fishing	0	0	302	49	0	29	380
4 Mining & Quarrying	15	0	0	4	0	8	27
5 Manufacturing	771083	0	134047	1443846	38686	61353	2449015
I) Registered	188958	0	134047	1265372	323	26325	1615025
ii) Un-registered	582125	0	0	178474	38363	35028	833990
6 Electricity, Gas and Water Supply	14465	0	3208	360121	341	946	379081
7 Construction	14052	24564	147012	1017	200	31815	218660
8 Trade, Hotels & Restaurants	12374	21	605	79611	8623	3459	104693
I) Trade	3791	21	605	79326	8466	2276	94485
ii) Hotels & Restaurants	8583	0	0	285	157	1183	10208
9 Transport, Storage & Communication	39294	1	85771	157569	59229	86	341950
I) Railways	26502	0	0	19992	0	0	46494
ii) Transport by Other means	4887	0	252	41	59216	4	64400
iii) Storage	7905	1	1158	90	13	82	9249
iv) Communication	0	0	84361	137446	0	0	221807
10 Banking & Insurance	6893	0	1175	23657	914	32639	65278
11 Real Estate, Ownership of Dwellings and Business services (only Residential Buildings Part)	773180	0	0	9	0	61	773250
12 Public Administration	161482	216935	282987	36492	4223	166797	868916
13 Other Services	65069	500	10639	11948	952	16803	105911
Total	2902050	246081	701953	2192853	113422	379390	6535749

P:Provisional

TABLE 4.31

**ESTIMATES OF GROSS FIXED CAPITAL FORMATION IN HARYANA
BY INDUSTRY OF USE AT CONSTANT PRICES 2014-15**

₹ in Lakh)							
S. Industry No.	Buildings	Roads & Bridges	Other Construction	Plant & Machinery	Transport Equipments	Other Equipments	Total G.F.C.F.
1 Agriculture	340068	1837	12207	52000	153	22926	429191
2 Forestry	70	0	4728	230	33	145	5206
3 Fishing	0	0	141	36	0	16	193
4 Mining & Quarrying	7	0	0	3	0	5	15
5 Manufacturing	455201	0	96210	1006183	21293	38124	1617011
I) Registered	135622	0	96210	908203	232	18894	1159161
ii) Un-registered	319579	0	0	97980	21061	19230	457850
6 Electricity, Gas and Water Supply	6759	0	1500	267549	250	532	276590
7 Construction	6566	11110	68761	756	147	17893	105233
8 Trade, Hotels & Restaurants	5782	9	283	59145	6331	1946	73496
I) Trade	1772	9	283	58934	6216	1280	68494
ii) Hotels & Restaurants	4010	0	0	211	115	666	5002
9 Transport, Storage & Communication	18362	0	40117	117064	43487	48	219078
I) Railways	12384	0	0	14853	0	0	27237
ii) Transport by Other means	2284	0	118	30	43478	2	45912
iii) Storage	3694	0	541	67	9	46	4357
iv) Communication	0	0	39458	102114	0	0	141572
10 Banking & Insurance	3221	0	550	17575	672	18357	40375
11 Real Estate, Ownership of Dwellings and Business services (only Residential Buildings Part)	364709	0	0	7	0	34	364750
12 Public Administration	75459	98116	132361	27112	3185	93812	430045
13 Other Services	30406	226	4976	8876	699	9451	54634
Total	1306610	111298	361834	1556536	76250	203289	3615817

P:Provisional

TABLE 4.32

**ESTIMATES OF GROSS FIXED CAPITAL FORMATION IN HARYANA
BY INDUSTRY OF USE AT CURRENT PRICES 2015-16(P)**

₹ in Lakh)							
S. Industry No.	Buildings	Roads & Bridges	Other Construction	Plant & Machinery	Transport Equipments	Other Equipments	Total G.F.C.F.
1 Agriculture	1243031	5097	38520	86981	69	66627	1440325
2 Forestry	149	0	10345	273	41	307	11115
3 Fishing	6	0	321	145	13	40	525
4 Mining & Quarrying	0	0	0	9	0	11	20
5 Manufacturing	749464	0	56696	1564999	41279	116209	2528647
I) Registered	148411	0	56696	1380722	1668	80042	1667539
ii) Un-registered	601053	0	0	184227	39611	36167	861108
6 Electricity, Gas and Water Supply	23366	75	1894	370524	509	2169	398537
7 Construction	13396	19079	113241	1059	298	34189	181262
8 Trade, Hotels & Restaurants	12607	208	485	53523	17256	8364	92443
I) Trade	3526	208	485	53293	17097	7116	81725
ii) Hotels & Restaurants	9081	0	0	230	159	1248	10718
9 Transport, Storage & Communication	86229	737	97557	208046	60137	6369	459075
I) Railways	70785	0	0	53400	0	0	124185
ii) Transport by Other means	8749	0	0	105	59909	6145	74908
iii) Storage	6695	737	2820	189	228	224	10893
iv) Communication	0	0	94737	154352	0	0	249089
10 Banking & Insurance	7569	0	1290	25975	1003	35838	71675
11 Real Estate, Ownership of Dwellings and Business services (only Residential Buildings Part)	811683	0	0	11	0	2	811696
12 Public Administration	165873	283358	268372	69614	5478	209176	1001871
13 Other Services	77052	2024	4257	12958	728	17433	114452
Total	3190425	310578	592978	2394117	126811	496734	7111643

P:Provisional

TABLE 4.33

**ESTIMATES OF GROSS FIXED CAPITAL FORMATION IN HARYANA
BY INDUSTRY OF USE AT CONSTANT PRICES 2015-16 (P)**

							₹ in Lakh)	
Sr. Industry No.	Buildings	Roads & Bridges	Other Construction	Plant & Machinery	Transport Equipments	Other Equipments	Total G.F.C.F.	
1 Agriculture	373919	2232	18308	55835	49	23916	474259	
2 Forestry	70	0	4917	202	30	167	5386	
3 Fishing	3	0	153	107	9	22	294	
4 Mining & Quarrying	0	0	0	7	0	6	13	
5 Manufacturing	441346	0	41145	1105517	23198	76954	1688160	
I) Registered	107705	0	41145	1003226	1210	56878	1210164	
ii) Un-registered	333641	0	0	102291	21988	20076	477996	
6 Electricity, Gas and Water Supply	11011	33	900	274462	369	1179	287954	
7 Construction	6313	8353	53822	784	216	18581	88069	
8 Trade, Hotels & Restaurants	5939	91	231	39647	12495	4546	62949	
I) Trade	1661	91	231	39477	12380	3867	57707	
ii) Hotels & Restaurants	4278	0	0	170	115	679	5242	
9 Transport, Storage & Communication	40637	323	46367	154109	43546	3462	288444	
I) Railways	33358	0	0	39556	0	0	72914	
ii) Transport by Other means	4123	0	0	78	43381	3340	50922	
iii) Storage	3156	323	1340	140	165	122	5246	
iv) Communication	0	0	45027	114335	0	0	159362	
10 Banking & Insurance	3567	0	613	19241	726	19477	43624	
11 Real Estate, Ownership of Dwellings and Business services (only Residential Buildings Part)	388160	0	0	8	0	1	388169	
12 Public Administration	78168	124062	127553	51566	3967	113683	498999	
13 Other Services	36311	886	2023	9599	527	9475	58821	
Total	1385444	135980	296032	1711084	85132	271469	3885141	

P:Provisional

TABLE 4.34

**ESTIMATES OF GROSS FIXED CAPITAL FORMATION IN HARYANA
BY ALL INSTITUTIONS OF PUBLIC SECTOR AT CURRENT PRICES**

		₹ in Lakh)											
Sr. No.	Industry	2004-05	2005-06	2006-07	2007-08	2008-09	2009-10	2010-11	2011-12	2012-13	2013-14	2014-15	2015-16(P)
1	Agriculture	45770	59432	70047	113011	110267	113653	87499	99890	94582	42750	33385	49090
2	Forestry	3748	6783	6776	7315	9190	6983	6187	6595	9249	9034	10738	11073
3	Fishing	29	54	39	73	491	290	229	58	55	61	78	204
4	Mining & Quarrying	83	58	80	79	86	84	89	79	49	25	11	20
5	Manufacturing	34326	36347	142090	123609	283461	120462	149218	258693	389211	366165	361400	200471
	I) Registered	34326	36347	142090	123609	283461	120462	149218	258693	389211	366165	361400	200471
	ii) Un-registered	0	0	0	0	0	0	0	0	0	0	0	0
6	Electricity, Gas and Water Supply	116690	158002	245683	306875	450695	468235	702852	517118	379193	317839	379081	398537
7	Construction	35189	37078	39620	67844	69990	100320	93905	106938	145320	191224	217691	180206
8	Trade, Hotels & Restaurants	2903	3495	3011	3797	28557	31768	31914	32006	35248	59189	87686	73376
	I) Trade	1394	1553	1339	2187	26535	29029	29282	29984	32511	56847	84317	70218
	ii) Hotels & Restaurants	1509	1942	1672	1610	2022	2739	2632	2022	2737	2342	3369	3158
9	Transport, Storage & Communication	45575	63211	60950	106597	78249	99865	101879	53014	72728	100023	106056	186164
	I) Railways	4912	31520	33821	75165	32508	58851	62311	25725	41941	44835	46494	124185
	ii) Transport by Other means	9020	7752	7838	13387	20214	11791	13661	16098	18088	16831	16164	13858
	iii) Storage	199	157	587	1018	287	8010	14095	3801	3990	5489	9018	9512
	iv) Communication	31444	23782	18704	17027	25240	21213	11812	7390	8709	32868	34380	38609
10	Banking & Insurance	12022	8572	7388	11647	9894	22201	19982	21103	27955	33505	26111	28670
11	Real Estate, Ownership of Dwellings and Business services (only Residential Buildings Part)	2714	3513	7891	10665	15302	19946	17522	25801	35452	37963	61264	86222
12	Public Administration	134751	151465	184014	265885	301309	494153	516331	553707	610883	730213	868916	1001871
13	Other Services	5587	10496	11718	21813	22772	26856	13548	20600	22248	40754	38904	42516
Total		439387	538506	779307	1039210	1380263	1504816	1741155	1695602	1822173	1928745	2191321	2258420
P: Provisional													

TABLE 4.35

**ESTIMATES OF GROSS FIXED CAPITAL FORMATION IN HARYANA
BY ALL INSTITUTIONS OF PUBLIC SECTOR AT CONSTANT (2004-05) PRICES**

Sr. No.	Industry	₹ (in Lakh)											
		2004-05	2005-06	2006-07	2007-08	2008-09	2009-10	2010-11	2011-12	2012-13	2013-14	2014-15	2015-16(P)
1	Agriculture	45770	55398	64262	93041	81770	79554	54697	55605	52503	21559	15843	23465
2	Forestry	3748	6593	6212	6004	6789	4883	3866	3719	4830	4509	5143	5366
3	Fishing	29	52	36	63	372	219	147	42	40	42	52	141
4	Mining & Quarrying	83	57	73	65	64	65	65	51	36	18	7	13
5	Manufacturing	34326	35126	129035	107271	227227	83497	113108	198559	294632	267366	247524	139995
	i) Registered	34326	35126	129035	107271	227227	83497	113108	198559	294632	267366	247524	139995
	ii) Un-registered	0	0	0	0	0	0	0	0	0	0	0	0
6	Electricity, Gas and Water Supply	116690	153153	225064	263867	375053	336477	526416	367715	286651	235918	276590	287954
7	Construction	35189	36258	36350	55688	51735	70160	58173	61200	76895	95667	104690	87484
8	Trade, Hotels & Restaurants	2903	3409	2725	3176	21525	23068	21741	19820	20480	43708	62989	51272
	i) Trade	1394	1511	1219	1864	20038	21179	20005	18686	19062	42504	61335	49740
	ii) Hotels & Restaurants	1509	1898	1506	1312	1487	1889	1736	1134	1418	1204	1654	1532
9	Transport, Storage & Communication	45575	61348	55496	90484	62504	75910	72914	35879	46103	60547	61763	106599
	i) Railways	4912	30611	30577	63131	25501	44391	44565	17058	26089	26984	27237	72914
	ii) Transport by Other means	9020	7547	7367	12259	17522	9935	11185	11997	12682	11916	11214	7558
	iii) Storage	199	154	485	830	216	5771	9319	2155	2129	2685	4223	4517
	iv) Communication	31444	23036	17067	14264	19265	15813	7845	4669	5203	18962	19089	21610
10	Banking & Insurance	12022	8298	6715	10164	8189	18482	16020	16197	20779	24139	18452	20096
11	Real Estate, Ownership of Dwellings and Business services (only Residential Buildings Part)	2714	3428	7109	8664	11229	13646	10926	14457	17863	18329	28637	40635
12	Public Administration	134751	147069	168623	219827	227237	357948	343145	315695	320778	362661	430045	498999
13	Other Services	5587	10212	10631	17929	17060	19257	8827	12607	12511	21947	20080	22080
Total		439387	520401	712331	876243	1090754	1083166	1230045	1101546	1154101	1156410	1271815	1284099

P: Provisional

TABLE 4.36

**ESTIMATES OF GROSS FIXED CAPITAL FORMATION IN HARYANA
BY ALL INSTITUTIONS OF PRIVATE SECTOR AT CURRENT PRICES**

(₹ in Lakh)

Sr. No.	Industry	2004-05	2005-06	2006-07	2007-08	2008-09	2009-10	2010-11	2011-12	2012-13	2013-14	2014-15	2015-16(P)
1	Agriculture	67291	70634	96844	133705	180964	251308	355429	514828	741138	1009763	1184331	1391235
2	Forestry	13412	1	0	1	34	39	120	0	206	184	134	42
3	Fishing	362	720	483	718	491	676	672	628	347	300	302	321
4	Mining & Quarrying	4702	4886	5032	5354	5367	1795	0	0	149	12	16	0
5	Manufacturing	618524	708608	747790	1013500	1016373	1167154	1408290	1718216	1814421	1958049	2087615	2328176
	I) Registered	332068	395225	388861	615040	589840	697366	882451	1072081	1063994	1166559	1253625	1467068
	ii) Un-registered	286456	313383	358929	398460	426533	469788	525839	646135	750427	791490	833990	861108
6	Electricity, Gas and Water Supply	0	0	0	0	0	0	0	0	0	0	0	0
7	Construction	325	352	388	428	483	561	494	709	795	876	969	1056
8	Trade, Hotels & Restaurants	5718	5800	6651	9111	8767	8015	8897	12445	18565	14799	17007	19067
	I) Trade	3576	3796	4097	6369	5104	5276	5775	7927	13398	8912	10168	11507
	ii) Hotels & Restaurants	2142	2004	2554	2742	3663	2739	3122	4518	5167	5887	6839	7560
9	Transport, Storage & Communication	41786	60234	79759	87025	168165	220140	215181	247446	233339	226507	235894	272911
	I) Railways	0	0	0	0	0	0	0	0	0	0	0	0
	ii) Transport by Other means	20968	20042	33066	28448	30208	29997	39035	38727	41455	46601	48236	61050
	iii) Storage	361	346	348	236	311	82	97	63	1482	721	231	1381
	iv) Communication	20457	39846	46345	58341	137646	190061	176049	208656	190402	179185	187427	210480
10	Banking & Insurance	6901	7434	9752	13095	6078	7073	15801	9741	18657	22336	39167	43005
11	Real Estate, Ownership of Dwellings and Business services (only Residential Buildings Part)	240802	255576	285422	327994	374265	405218	472988	541661	613930	691249	711986	725474
12	Public Administration	0	0	0	0	0	0	0	0	0	0	0	0
13	Other Services	12751	10335	15004	16201	23970	35464	42532	53549	52053	60534	67007	71936
Total		1012574	1124580	1247125	1607132	1784957	2097443	2520404	3099223	3493600	3984609	4344428	4853223

P: Provisional

TABLE 4.37

**ESTIMATES OF GROSS FIXED CAPITAL FORMATION IN HARYANA
BY ALL INSTITUTIONS OF PRIVATE SECTOR AT CONSTANT (2004-05) PRICES**

(₹ in Lakh)

Sr. No.	Industry	2004-05	2005-06	2006-07	2007-08	2008-09	2009-10	2010-11	2011-12	2012-13	2013-14	2014-15	2015-16(P)
1	Agriculture	67291	68895	88492	110280	132202	160314	194054	236021	283928	362818	413348	450794
2	Forestry	13412	1	0	1	25	27	74	0	106	90	63	20
3	Fishing	362	700	443	588	362	476	421	353	178	147	141	153
4	Mining & Quarrying	4702	4775	4571	4402	3976	1388	0	0	115	6	8	0
5	Manufacturing	618524	687407	677681	863084	799766	917171	1078563	1227282	1239978	1304074	1369487	1548165
	i) Registered	332068	382351	352819	531710	473192	573944	716507	822873	805459	859127	911637	1070169
	ii) Un-registered	286456	305056	324862	331374	326574	343227	362056	404409	434519	444947	457850	477996
6	Electricity, Gas and Water Supply	0	0	0	0	0	0	0	0	0	0	0	0
7	Construction	325	343	351	354	367	421	347	454	474	500	543	585
8	Trade, Hotels & Restaurants	5718	5654	6180	8288	7081	6365	6686	8841	12622	9312	10507	11677
	i) Trade	3576	3698	3876	6054	4384	4447	4689	6145	9932	6347	7159	7967
	ii) Hotels & Restaurants	2142	1956	2304	2234	2697	1918	1997	2696	2690	2965	3348	3710
9	Transport, Storage & Communication	41786	58400	73971	76547	138823	177248	165369	180780	163958	154926	157315	181845
	i) Railways	0	0	0	0	0	0	0	0	0	0	0	0
	ii) Transport by Other means	20968	19516	31426	26303	26467	25444	32059	30601	31337	33982	34698	43364
	iii) Storage	361	336	312	199	247	63	68	46	793	405	134	729
	iv) Communication	20457	38548	42233	50045	112109	151741	133242	150133	131828	120539	122483	137752
10	Banking & Insurance	6901	7251	8879	11284	4504	5387	11017	6218	11167	12642	21923	23528
11	Real Estate, Ownership of Dwellings and Business services (only Residential Buildings Part)	240802	248953	257383	266102	275121	284448	294880	303452	309285	325071	336113	347534
12	Public Administration	0	0	0	0	0	0	0	0	0	0	0	0
13	Other Services	12751	10064	13627	13289	17781	25388	27565	30883	28212	32427	34554	36741
Total		1012574	1092443	1131578	1354219	1380008	1578633	1778976	1994284	2050023	2202013	2344002	2601042

P: Provisional

TABLE 4.38

**ESTIMATES OF GROSS FIXED CAPITAL FORMATION IN HARYANA
BY ALL INSTITUTIONS OF PUBLIC ADMINISTRATION AT CURRENT PRICES**

(₹ in Lakh)

Sr. No.	Industry	2004-05	2005-06	2006-07	2007-08	2008-09	2009-10	2010-11	2011-12	2012-13	2013-14	2014-15	2015-16(P)
1	Agriculture	21453	15146	19434	31320	39167	44022	26662	25995	17783	30237	21956	35933
2	Forestry	38	38	80	80	1207	796	188	185	278	279	344	759
3	Fishing	29	54	39	73	491	290	229	58	55	61	78	204
4	Mining & Quarrying	83	58	80	79	86	84	89	79	49	25	11	20
5	Manufacturing	0	0	0	71	0	0	0	0	0	0	0	0
	I) Registered	0	0	0	71	0	0	0	0	0	0	0	0
	ii) Un-registered	0	0	0	0	0	0	0	0	0	0	0	0
6	Electricity, Gas and Water Supply	1725	2357	3301	3720	4136	4470	4122	5068	606	4352	1327	5027
7	Construction	33451	34954	36568	66258	67392	100124	93780	106872	144802	190922	211883	174962
8	Trade, Hotels & Restaurants	1340	1696	1550	1428	1879	2596	1821	2003	2201	2030	2952	2197
	I) Trade	0	0	0	0	0	0	0	0	0	0	0	0
	ii) Hotels & Restaurants	1340	1696	1550	1428	1879	2596	1821	2003	2201	2030	2952	2197
9	Transport, Storage & Communication	0	0	0	0	0	0	0	0	0	0	0	0
	I) Railways	0	0	0	0	0	0	0	0	0	0	0	0
	ii) Transport by Other means	0	0	0	0	0	0	0	0	0	0	0	0
	iii) Storage	0	0	0	0	0	0	0	0	0	0	0	0
	iv) Communication	0	0	0	0	0	0	0	0	0	0	0	0
10	Banking & Insurance	0	0	0	0	0	0	0	0	0	0	0	0
11	Real Estate, Ownership of Dwellings and Business services (only Residential Buildings Part)	1215	638	769	2296	2900	2757	1693	1478	3716	3657	3121	8016
12	Public Administration	134751	151465	184014	265885	301309	494153	516331	553707	610883	730213	868916	1001871
13	Other Services	5586	10493	11715	21801	22406	26772	13452	20580	22227	34000	35019	39657
	Total	199671	216899	257550	393011	440973	676064	658367	716025	802600	995776	1145607	1268646

P: Provisional

TABLE 4.39

**ESTIMATES OF GROSS FIXED CAPITAL FORMATION IN HARYANA
BY ALL INSTITUTIONS OF PUBLIC ADMINISTRATION
AT CONSTANT (2004-05) PRICES**

(₹ in Lakh)

Sr. No.	Industry	2004-05	2005-06	2006-07	2007-08	2008-09	2009-10	2010-11	2011-12	2012-13	2013-14	2014-15	2015-16(P)
1	Agriculture	21453	13363	17837	26083	29238	30855	16719	14655	9456	15407	10497	17211
2	Forestry	38	37	73	69	892	557	120	109	148	142	165	367
3	Fishing	29	52	36	63	372	219	147	42	40	42	52	141
4	Mining & Quarrying	83	57	73	65	64	65	65	51	36	18	7	13
5	Manufacturing	0	0	0	58	0	0	0	0	0	0	0	0
	i) Registered	0	0	0	58	0	0	0	0	0	0	0	0
	ii) Un-registered	0	0	0	0	0	0	0	0	0	0	0	0
6	Electricity, Gas and Water Supply	1725	2291	2974	3022	3034	3058	2571	2944	440	2129	774	2498
7	Construction	33451	34194	33591	54313	49811	69994	58070	61147	76492	95463	101594	84620
8	Trade, Hotels & Restaurants	1340	1657	1396	1160	1379	1776	1168	1122	1137	1022	1421	1057
	i) Trade	0	0	0	0	0	0	0	0	0	0	0	0
	ii) Hotels & Restaurants	1340	1657	1396	1160	1379	1776	1168	1122	1137	1022	1421	1057
9	Transport, Storage & Communication	0	0	0	0	0	0	0	0	0	0	0	0
	i) Railways	0	0	0	0	0	0	0	0	0	0	0	0
	ii) Transport by Other means	0	0	0	0	0	0	0	0	0	0	0	0
	iii) Storage	0	0	0	0	0	0	0	0	0	0	0	0
	iv) Communication	0	0	0	0	0	0	0	0	0	0	0	0
10	Banking & Insurance	0	0	0	0	0	0	0	0	0	0	0	0
11	Real Estate, Ownership of Dwellings and Business services (only Residential Buildings Part)	1215	623	693	1865	2130	1889	1058	831	1875	1772	1467	3780
12	Public Administration	134751	147069	168623	219827	227237	357948	343145	315695	320778	362661	430045	498999
13	Other Services	5586	10209	10628	17919	16763	19188	8763	12594	12497	18538	17804	20690
	Total	199671	209552	235924	324444	330920	485549	431826	409190	422899	497194	563826	629376

P: Provisional

TABLE 4.40

**ESTIMATES OF GROSS FIXED CAPITAL FORMATION IN HARYANA
BY ALL INSTITUTIONS OF DEPARTMENTAL ENTERPRISES
AT CURRENT PRICES**

(₹ in Lakh)

Sr. No.	Industry	2004-05	2005-06	2006-07	2007-08	2008-09	2009-10	2010-11	2011-12	2012-13	2013-14	2014-15	2015-16(P)
1	Agriculture	24281	44284	50439	80863	70919	69282	60488	73546	76796	12510	11422	13152
2	Forestry	3710	6745	6696	7235	7983	6187	5999	6410	8971	8755	10394	10314
3	Fishing	0	0	0	0	0	0	0	0	0	0	0	0
4	Mining & Quarrying	0	0	0	0	0	0	0	0	0	0	0	0
5	Manufacturing	7	6	10	9	74	53	61	79	33	67	90	79
	i) Registered	7	6	10	9	74	53	61	79	33	67	90	79
	ii) Un-registered	0	0	0	0	0	0	0	0	0	0	0	0
6	Electricity, Gas and Water Supply	0	0	0	0	0	0	0	0	0	0	0	0
7	Construction	146	0	53	65	146	192	121	62	518	20	0	0
8	Trade, Hotels & Restaurants	0	0	0	0	143	0	0	0	536	0	0	0
	i) Trade	0	0	0	0	143	0	0	0	0	0	0	0
	ii) Hotels & Restaurants	0	0	0	0	0	0	0	0	536	0	0	0
9	Transport, Storage & Communication	13932	39272	41659	88552	52722	70642	75972	41823	60029	61666	62658	138043
	i) Railways	4912	31520	33821	75165	32508	58851	62311	25725	41941	44835	46494	124185
	ii) Transport by Other means	9020	7752	7838	13387	20214	11791	13661	16098	18088	16831	16164	13858
	iii) Storage	0	0	0	0	0	0	0	0	0	0	0	0
	iv) Communication	0	0	0	0	0	0	0	0	0	0	0	0
10	Banking & Insurance	0	0	0	0	0	0	0	0	0	0	0	0
11	Real Estate, Ownership of Dwellings and Business services (only Residential Buildings Part)	0	0	0	0	0	0	0	0	0	0	0	0
12	Public Administration	0	0	0	0	0	0	0	0	0	0	0	0
13	Other Services	0	0	0	0	0	0	0	0	0	0	0	0
Total		42076	90307	98857	176724	131987	146356	142641	121920	146883	83018	84564	161588

P: Provisional

TABLE 4.41

**ESTIMATES OF GROSS FIXED CAPITAL FORMATION IN HARYANA
BY ALL INSTITUTIONS OF DEPARTMENTAL ENTERPRISES
AT CONSTANT (2004-05) PRICES**

(₹ in Lakh)

Sr. No.	Industry	2004-05	2005-06	2006-07	2007-08	2008-09	2009-10	2010-11	2011-12	2012-13	2013-14	2014-15	2015-16(P)
1	Agriculture	24281	42035	46266	66281	52400	48428	37727	40723	43045	6150	5343	6251
2	Forestry	3710	6556	6139	5935	5897	4326	3746	3610	4682	4367	4978	4999
3	Fishing	0	0	0	0	0	0	0	0	0	0	0	0
4	Mining & Quarrying	0	0	0	0	0	0	0	0	0	0	0	0
5	Manufacturing	7	6	9	7	54	41	43	51	20	38	51	43
	I) Registered	7	6	9	7	54	41	43	51	20	38	51	43
	ii) Un-registered	0	0	0	0	0	0	0	0	0	0	0	0
6	Electricity, Gas and Water Supply	0	0	0	0	0	0	0	0	403	0	0	0
7	Construction	146	0	48	57	124	163	100	50	0	15	0	0
8	Trade, Hotels & Restaurants	0	0	0	0	108	0	0	0	0	0	0	0
	I) Trade	0	0	0	0	0	0	0	0	0	0	0	0
	ii) Hotels & Restaurants	0	0	0	0	108	0	0	0	0	0	0	0
9	Transport, Storage & Communication	13932	38158	37944	75390	43023	54326	55750	29055	38771	38900	38451	80472
	I) Railways	4912	30611	30577	63131	25501	44391	44565	17058	26089	26984	27237	72914
	ii) Transport by Other means	9020	7547	7367	12259	17522	9935	11185	11997	12682	11916	11214	7558
	iii) Storage	0	0	0	0	0	0	0	0	0	0	0	0
	iv) Communication	0	0	0	0	0	0	0	0	0	0	0	0
10	Banking & Insurance	0	0	0	0	0	0	0	0	0	0	0	0
11	Real Estate, Ownership of Dwellings and Business services (only Residential Buildings Part)	0	0	0	0	0	0	0	0	0	0	0	0
12	Public Administration	0	0	0	0	0	0	0	0	0	0	0	0
13	Other Services	0	0	0	0	0	0	0	0	0	0	0	0
Total		42076	86755	90406	147670	101606	107284	97366	73489	86921	49470	48823	91765

P: Provisional

TABLE 4.42

**ESTIMATES OF GROSS FIXED CAPITAL FORMATION IN HARYANA
BY ALL INSTITUTIONS OF NON - DEPARTMENTAL ENTERPRISES
AT CURRENT PRICES**

(₹ in Lakh)

Sr. No.	Industry	2004-05	2005-06	2006-07	2007-08	2008-09	2009-10	2010-11	2011-12	2012-13	2013-14	2014-15	2015-16(P)
1	Agriculture	36	2	174	828	181	349	349	349	3	3	7	5
2	Forestry	0	0	0	0	0	0	0	0	0	0	0	0
3	Fishing	0	0	0	0	0	0	0	0	0	0	0	0
4	Mining & Quarrying	0	0	0	0	0	0	0	0	0	0	0	0
5	Manufacturing	34319	36341	142080	123529	283387	120409	149157	258614	389178	366098	361310	200392
	5.1 Registered	34319	36341	142080	123529	283387	120409	149157	258614	389178	366098	361310	200392
	5.2 Un-registered	0	0	0	0	0	0	0	0	0	0	0	0
6	Electricity, Gas and Water Supply	114965	155645	242382	303155	446559	463765	698730	512050	378587	313487	377754	393510
7	Construction	1592	2124	2999	1521	2452	4	4	4	0	282	5808	5244
8	Trade, Hotels & Restaurants	1563	1799	1461	2369	26535	29172	30093	30003	32511	57159	84734	71179
	8.1 Trade	1394	1553	1339	2187	26535	29029	29282	29984	32511	56847	84317	70218
	8.2 Hotels & Restaurants	169	246	122	182	0	143	811	19	0	312	417	961
9	Transport, Storage & Communication	31643	23939	19291	18045	25527	29223	25907	11191	12699	38357	43398	48121
	9.1 Railways	0	0	0	0	0	0	0	0	0	0	0	0
	9.2 Transport by Other means	0	0	0	0	0	0	0	0	0	0	0	0
	9.3 Storage	199	157	587	1018	287	8010	14095	3801	3990	5489	9018	9512
	9.4 Communication	31444	23782	18704	17027	25240	21213	11812	7390	8709	32868	34380	38609
10	Banking & Insurance	12022	8572	7388	11647	9894	22201	19982	21103	27955	33505	26111	28670
11	Real Estate, Ownership of Dwellings and Business services (only Residential Buildings Part)	1499	2875	7122	8369	12402	17189	15829	24323	31736	34306	58143	78206
12	Public Administration	0	0	0	0	0	0	0	0	0	0	0	0
13	Other Services	1	3	3	12	366	84	96	20	21	6754	3885	2859
Total		197640	231300	422900	469475	807303	682396	940147	857657	872690	849951	961150	828186

P: Provisional

TABLE 4.43

**ESTIMATES OF GROSS FIXED CAPITAL FORMATION IN HARYANA
BY ALL INSTITUTIONS OF NON - DEPARTMENTAL ENTERPRISES
AT CONSTANT (2004-05) PRICES**

₹ in Lakh)													
Sr. No.	Industry	2004-05	2005-06	2006-07	2007-08	2008-09	2009-10	2010-11	2011-12	2012-13	2013-14	2014-15	2015-16(P)
1	Agriculture	36	0	159	677	132	271	251	227	2	2	3	3
2	Forestry	0	0	0	0	0	0	0	0	0	0	0	0
3	Fishing	0	0	0	0	0	0	0	0	0	0	0	0
4	Mining & Quarrying	0	0	0	0	0	0	0	0	0	0	0	0
5	Manufacturing	34319	35120	129026	107206	227173	83456	113065	198508	294612	267328	247473	139952
	5.1 Registered	34319	35120	129026	107206	227173	83456	113065	198508	294612	267328	247473	139952
	5.2 Un-registered	0	0	0	0	0	0	0	0	0	0	0	0
6	Electricity, Gas and Water Supply	114965	150862	222090	260845	372019	333419	523845	364771	286211	233789	275816	285456
7	Construction	1592	2064	2711	1318	1800	3	3	3	0	189	3096	2864
8	Trade, Hotels & Restaurants	1563	1752	1329	2016	20038	21292	20573	18698	19343	42686	61568	50215
	8.1 Trade	1394	1511	1219	1864	20038	21179	20005	18686	19062	42504	61335	49740
	8.2 Hotels & Restaurants	169	241	110	152	0	113	568	12	281	182	233	475
9	Transport, Storage & Communication	31643	23190	17552	15094	19481	21584	17164	6824	7332	21647	23312	26127
	9.1 Railways	0	0	0	0	0	0	0	0	0	0	0	0
	9.2 Transport by Other means	0	0	0	0	0	0	0	0	0	0	0	0
	9.3 Storage	199	154	485	830	216	5771	9319	2155	2129	2685	4223	4517
	9.4 Communication	31444	23036	17067	14264	19265	15813	7845	4669	5203	18962	19089	21610
10	Banking & Insurance	12022	8298	6715	10164	8189	18482	16020	16197	20779	24139	18452	20096
11	Real Estate, Ownership of Dwellings and Business services (only Residential Buildings Part)	1499	2805	6416	6799	9099	11757	9868	13626	15988	16557	27170	36855
12	Public Administration	0	0	0	0	0	0	0	0	0	0	0	0
13	Other Services	1	3	3	10	297	69	64	13	14	3409	2276	1390
Total		197640	224094	386001	404129	658228	490333	700853	618867	644281	609746	659166	562958

P: Provisional

TABLE 4.44

**PERCENTAGE OF GROSS FIXED CAPITAL FORMATION TO GROSS STATE
DOMESTIC PRODUCT OF HARYANA BY INDUSTRY OF USE
AT CURRENT PRICES**

(Percent)

Sr. No.	Industry	2004-05	2005-06	2006-07	2007-08	2008-09	2009-10	2010-11	2011-12	2012-13	2013-14	2014-15	2015-16(P)
1	Agriculture	5.39	5.98	6.10	7.66	7.26	8.21	8.57	10.41	13.00	14.22	15.88	17.90
2	Forestry	16.51	6.02	4.17	3.45	4.22	2.61	2.07	2.07	2.53	2.53	2.77	2.74
3	Fishing	3.43	5.94	3.21	4.08	3.18	2.71	1.33	0.80	0.40	0.38	0.32	0.60
4	Mining & Quarrying	24.56	13.81	13.65	13.50	13.67	8.83	1.01	0.79	2.44	0.40	0.28	0.03
5	Manufacturing	31.92	32.59	34.42	38.96	38.82	30.12	31.92	37.92	38.51	38.45	37.93	28.41
	5.1 Registered	26.30	27.45	30.01	36.71	36.72	25.52	28.15	34.16	34.22	34.18	33.72	0.00
	5.2 Un-registered	43.90	43.91	43.98	43.97	43.98	43.87	43.32	49.07	50.87	50.74	50.05	0.00
6	Electricity, Gas and Water Supply	72.38	75.77	120.61	138.56	141.69	139.94	173.19	188.04	78.69	47.63	46.93	27.81
7	Construction	3.84	3.61	3.24	4.84	4.27	4.94	4.29	3.95	4.66	5.36	5.33	4.87
8	Trade, Hotels & Restaurants	0.56	0.51	0.43	0.48	1.12	0.95	0.78	0.71	0.76	0.95	1.20	1.73
9	Transport, Storage & Communication	11.27	13.20	12.91	14.59	16.26	16.98	14.79	12.07	10.38	9.53	8.76	16.48
	9.1 Railways	4.13	20.62	18.79	31.30	14.51	22.07	27.6	9.16	12.02	11.10	10.45	26.20
	9.2 Transport by Other means	5.55	4.26	5.26	4.47	4.52	2.96	3.07	2.77	2.56	2.35	2.09	4.30
	9.3 Storage	7.38	6.74	12.05	9.28	4.07	65.71	87.88	19.33	21.45	17.41	20.87	70.11
	9.4 Communication	47.93	51.82	52.60	55.18	101.02	108.25	102.04	102.51	82.00	73.72	65.60	45.05
10	Banking & Insurance	6.24	4.58	4.09	5.00	2.77	4.42	4.00	2.82	3.71	3.97	4.10	3.96
11	Real Estate, Ownership of Dwellings and Business services (only Residential Buildings Part)	28.82	24.47	24.51	23.05	22.46	19.52	20.64	19.83	18.95	16.50	14.36	10.20
12	Public Administration	57.09	56.22	63.65	81.49	66.87	87.85	79.39	80.41	77.24	81.06	85.18	90.88
13	Other Services	3.62	3.59	3.93	4.84	4.51	4.20	3.28	3.79	3.12	3.61	3.18	5.10
Total		15.16	15.27	15.74	17.46	17.34	16.11	16.35	16.05	15.57	15.20	15.01	16.19
P: Provisional													

TABLE 4.45

**PERCENTAGE OF GROSS FIXED CAPITAL FORMATION TO GROSS
STATE DOMESTIC PRODUCT IN HARYANA
AT CURRENT PRICES**

Sr. No.	Year	Gross State Domestic Product			Gross Fixed Capital Formation			Percentage of GFCF to GSDP		
		₹ in Lakh			₹ in Lakh			(Percent)		
		Primary	Secondary	Tertiary	Primary	Secondary	Tertiary	Primary	Secondary	Tertiary
1	2	3	4	5	6	7	8	9	10	11
1	2004-05	2231982	3132347	4215183	135397	805054	511210	6.1	25.7	12.1
2	2005-06	2336981	3531153	5020323	142568	940387	580131	6.1	26.6	11.6
3	2006-07	2951869	4023343	5898022	179301	1175571	671560	6.1	29.2	11.4
4	2007-08	3491352	4550801	7117437	260256	1512256	873830	7.5	33.2	12.3
5	2008-09	4303135	5317134	8631946	306890	1821002	1037328	7.1	34.2	12.0
6	2009-10	4770297	6650067	10939661	374828	1856732	1370699	7.9	27.9	12.5
7	2010-11	5546781	7482603	13032744	450225	2354759	1456575	8.1	31.5	11.2
8	2011-12	6321278	8213042	15334513	622078	2601674	1571073	9.8	31.7	10.2
9	2012-13	6909932	9342174	17883009	845775	2728940	1741058	12.2	29.2	9.7
10	2013-14	7869844	10294088	20727730	1062129	2834153	2017072	13.5	27.5	9.7
11	2014-15	8186929	11363583	23978693	1228995	3046756	2259998	15.0	26.8	9.4
12	2015-16(P)	8602598	14053368	21256624	1451985	3108446	2551212	16.9	22.1	12.0

P: Provisional

TABLE 4.46

PERCENTAGE OF GROSS FIXED CAPITAL FORMATION TO GROSS STATE DOMESTIC PRODUCT IN HARYANA AND ALL INDIA AT CURRENT PRICES

Sr. No.	Year	All India			Haryana		
		Gross Domestic Product at Current Prices (₹ Crore)	Gross Fixed Capital Formation at Current Prices (₹ Crore)	GFCF as Percentage of GDP	GSDP at Current Prices (₹ Crore)	Gross Fixed Capital Formation at Current Prices (₹ Crore)	GFCF as Percentage of GSDP
1	2	3	4	5	6	7	8
1	2004-05	2971464	931028	31.3	95795	14520	15.2
2	2005-06	3390503	1120292	33.0	108885	16631	15.3
3	2006-07	3953276	1343774	34.0	128732	20264	15.7
4	2007-08	4582086	1641673	35.8	151596	26463	17.5
5	2008-09	5303567	1821099	34.3	182522	31652	17.3
6	2009-10	6091485	2041758	33.5	223600	36023	15.5
7	2010-11	7157412	2331382	32.6	260621	42616	16.3
8	2011-12	8391691	2861062	34.1	298688	47948	16.0
9	2012-13	9388876	3071543	32.7	341351	53158	15.6
10	2013-14	10472807	3211114	30.7	388917	59134	15.2
11	2014-15	12433749	3762477	30.3	435310	65357	15.0
12	2015-16(P)	13764037*	2884968*	21.0	485824*	71116	14.6

P: Provisional

***The Figures are based on the estimates compiled in the new series with base year 2011-12.**

ABBREVIATIONS USED IN THE PUBLICATION

GFCF	Gross Fixed Capital Formation
AIDIS	All India Debt and Investment Survey
ASI	Annual Survey of Industries
GOI	Government of India
CSO	Central Statistical Office
GDP	Gross Domestic Product
GSDP	Gross State Domestic Product
HAFED	Haryana State Co-operative Supply & Marketing Federation Ltd.
B&R	Buildings & Roads
NSSO	National Sample Survey Office
RBI	Reserve Bank of India
RAC	Regional Accounts Committee
RBI	Reserve Bank of India
ITI	Industrial Training Institute
DRDA	District Rural Development Authority
CADA	Command Area Development Authority
GAIL	GAS Authority of India Limited
MC	Municipal Committees
NAC	Notified Area Committees
HUDA	Haryana Urban Development Authority
HFC	Haryana Forest Corporation
HPHC	Haryana Police Housing Corporation
CWC	Central Warehousing Corporation
HWC	Haryana Warehousing Corporation

