



GOVERNMENT OF HARYANA

GROSS FIXED CAPITAL FORMATION  
IN  
HARYANA

2004-05-2011-12

(BASE YEAR 2004-05)

**Issued by**

DEPARTMENT OF ECONOMIC AND STATISTICAL  
ANALYSIS, HARYANA

2014

Publication No.1078



**GOVERNMENT OF HARYANA**

**GROSS FIXED CAPITAL FORMATION  
IN  
HARYANA**

**2004-05 to 2011-12**

**(BASE YEAR 2004-05)**

**Issued by**

**DEPARTMENT OF ECONOMIC AND STATISTICAL  
ANALYSIS, HARYANA**

**2014**

## **PREFACE**

In a developing economy like India, Capital Formation is of paramount importance. It acts as a determinant of economic growth and serves as a yardstick for measurement of capital stock. The productive capacity of the economy depends to a large extent upon the Capital Formation i.e. more the capital accumulation, the higher would be the productive capacity of the economy.

The estimates of Capital Formation prepared at the National level do not meet the requirements of the individual States due to regional variations. This has, therefore, necessitated preparation of estimates of Capital Formation at State level. It provides an important indicator in measuring the growth of productive potential of State economy. It is an important prerequisite for formulation of future development programmes.

This report presents the estimates of Gross Fixed Capital Formation in Haryana both at current and constant (Base : 2004-05) prices from the years 2004-05 to 2011-12. For preparation of the estimates of Gross Fixed Capital Formation, the standard methodology suggested by the Central Statistical Organisation (CSO), Govt. of India with suitable modifications, wherever necessary, has been followed. It is hoped that planners, economists, administrators and research scholars would find the information contained in the report quite useful for having an overview of the State's economy and for purposes of planning, formulation of developmental programmes and taking policy decisions.

This report has been prepared by Sh. Pawan Kumar, Research Officer with the help of Smt. Suresh Wati, Assistant Research Officer, Smt. Anita, Statistical Assistant and Smt. Krishna Sharma, Senior Scale Stenographer under the guidance of Sh. Randhir Singh Kamboj, Deputy Director and over all supervisions of Dr. R.S. Malhan, Additional Director.

I acknowledge my sincere thanks to the officers of Central Statistical Organisation, Govt. of India for their valuable co-operation in shaping this report. The assistance extended by other Departments/Organisations and District Statistical Offices in furnishing the basic data required for finalising the estimates is also acknowledged.

Panchkula  
Dated the 1<sup>st</sup> Aug., 2014

R.K. BISHNOI  
Director, Department of Economic & Statistical  
Analysis, Haryana.

## CONTENTS

Sr. No.	Description	Page No.
1	2	3
<b>PART - I</b>		
1	Introduction	1-5
2	Concepts and Definitions	7-8
3	Methodology	9-18
<b>PART - II</b>		
4	Tables & Charts	21-79
	4.1 Estimates of Gross Fixed Capital Formation in Haryana by Industry of Use at Current Prices	21
	4.2 Estimates of Gross Fixed Capital Formation in Haryana by Industry of Use at Constant (2004-05) Prices	22
	Chart-Estimates of Gross Fixed Capital Formation in Haryana	23
	Chart-Composition of Gross Fixed Capital Formation in Haryana by Broad Sectors at Current prices	25
	Chart-Composition of Gross Fixed Capital Formation in Haryana by Broad Sectors at Constant (2004-05) prices	27
	4.3 Estimates of Gross Fixed Capital Formation in Haryana by type of Institutions at Current Prices	29
	Chart-Contribution of Public and Private Sectors in Gross Fixed Capital Formation at Current Prices	31
	4.4 Estimates of Gross Fixed Capital Formation in Haryana by type of Institutions at Constant (2004-05) Prices	33
	Chart- Contribution of Public & Private Sectors in Gross Fixed Capital Formation at Constant (2004-05) Prices	35

Sr. No.	Description	Page No.
1	2	3
	4.5 Estimates of Gross Fixed Capital Formation in Haryana by type of Assets at Current Prices	37
	Chart-Composition of Gross Fixed Capital Formation in Haryana by type of Assets at Current Prices	39
	4.6 Estimates of Gross Fixed Capital Formation in Haryana by type of Assets at Constant (2004-05) Prices	41
	Chart- Composition of Gross Fixed Capital Formation in Haryana by type of Assets at Constant (2004-05) Prices	43
	4.7 Composition of Gross Fixed Capital Formation in Haryana by Industry of Use at Current Prices	45
	4.8 Composition of Gross Fixed Capital Formation in Haryana by Industry of Use at Constant (2004-05) Prices	46
	4.9 Percentage Increase/Decrease over the Previous Year in Gross Fixed Capital Formation in Haryana by Industry of Use at Current Prices	47
	4.10 Percentage Increase/Decrease over the Previous Year in Gross Fixed Capital Formation in Haryana by Industry of Use at Constant (2004-05) Prices	48
	4.11 Estimates of Gross Fixed Capital Formation in Haryana by Industry of Use for 2004-05 at Current Prices	49
	4.12 Estimates of Gross Fixed Capital Formation in Haryana by Industry of Use for 2005-06 at Current Prices	50
	4.13 Estimates of Gross Fixed Capital Formation in Haryana by Industry of Use for 2005-06 at Constant Prices	51
	4.14 Estimates of Gross Fixed Capital Formation in Haryana by Industry of Use for 2006-07 at Current Prices	52
	4.15 Estimates of Gross Fixed Capital Formation in Haryana by Industry of Use for 2006-07 at Constant (2004-05) Prices	53

Sr. No.	Description	Page No.
1	2	3
	4.16 Estimates of Gross Fixed Capital Formation in Haryana by Industry of Use for 2007-08 at Current Prices	54
	4.17 Estimates of Gross Fixed Capital Formation in Haryana by Industry of Use for 2007-08 at Constant (2004-05) Prices	55
	4.18 Estimates of Gross Fixed Capital Formation in Haryana by Industry of Use for 2008-09 at Current Prices	56
	4.19 Estimates of Gross Fixed Capital Formation in Haryana by Industry of Use for 2008-09 at Constant (2004-05) Prices	57
	4.20 Estimates of Gross Fixed Capital Formation in Haryana by Industry of Use for 2009-10 (R) at Current Prices	58
	4.21 Estimates of Gross Fixed Capital Formation in Haryana by Industry of Use for 2009-10 (R) at Constant (2004-05) Prices	59
	4.22 Estimates of Gross Fixed Capital Formation in Haryana by Industry of Use for 2010-11 (R) at Current Prices	60
	4.23 Estimates of Gross Fixed Capital Formation in Haryana by Industry of Use for 2010-11 (R) at Constant (2004-05) Prices	61
	4.24 Estimates of Gross Fixed Capital Formation in Haryana by Industry of Use for 2011-12 (P) at Current Prices	62
	4.25 Estimates of Gross Fixed Capital Formation in Haryana by Industry of Use for 2011-12 (P) at Constant (2004-05) Prices	63
	4.26 Estimates of Gross Fixed Capital Formation in Haryana by All Institutions of Public Sector at Current Prices	64
	4.27 Estimates of Gross Fixed Capital Formation in Haryana by All Institutions of Public Sector at Constant (2004-05) Prices	65
	4.28 Estimates of Gross Fixed Capital Formation in Haryana by All Institutions of Private Sector at Current Prices	66
	4.29 Estimates of Gross Fixed Capital Formation in Haryana by All Institutions of Private Sector at Constant (2004-05) Prices	67
	4.30 Estimates of Gross Fixed Capital Formation in Haryana by All Institutions of Public Administration at Current Prices	68

Sr. No.	Description	Page No.
1	2	3
4.31	Estimates of Gross Fixed Capital Formation in Haryana by All Institutions of Public Administration at Constant (2004-05) Prices	69
4.32	Estimates of Gross Fixed Capital Formation in Haryana by All Institutions of Departmental Enterprises at Current Prices	70
4.33	Estimates of Gross Fixed Capital Formation in Haryana by <b>All Institutions of Departmental Enterprises at Constant (2004-05) Prices</b>	71
4.34	Estimates of Gross Fixed Capital Formation in Haryana by All Institutions of Non-Departmental Enterprises at Current Prices	72
4.35	Estimates of Gross Fixed Capital Formation in Haryana by <b>All Institutions of Non-Departmental Enterprises at Constant (2004-05) Prices</b>	73
4.36	Percentage of Gross Fixed Capital Formation to Gross State Domestic Product of Haryana by Industry of Use-2004-05 to 2011-12 at Current Prices.	74
4.37	Percentage of Gross Fixed Capital Formation to Gross State Domestic Product in Haryana 2004-05 to 2011-12 at Current Prices	75
4.38	Percentage of Gross Fixed Capital Formation to Gross State Domestic Product in Haryana and All India 2004-05 to 2011-12 at Current Prices	76
	Chart-Percentage of Gross Fixed Capital Formation to Gross State Domestic Product in Haryana at Current Prices	77
	Abbreviations used in the Publication	78





## Executive Summary

The estimates of Capital Formation are of considerable importance in the context of planning and economic development as these throw light on the addition to the capital base of the economy and subsequent change in the modes and capacity of production. These estimates are among the important statistics required for the policy decisions in resources mobilization, allocation of resources and for assessing the growth potential of the economy. The higher the rate of Capital Formation, the higher would be the rate of growth in National/State Product. Therefore, Capital Formation is the major determinant of economic growth.

Capital Formation is defined as that part of country's current output and imports which is not consumed or exported during the accounting period, but is set aside as an addition to its stock of capital goods. Net Capital Formation is distinguished from Gross Capital Formation in the sense that it is measured after allowances are made for consumption of fixed capital which includes foreseen obsolescence and accidental damages to the extent provided by the enterprises. Total Capital Formation can be broadly classified into Gross Fixed Capital Formation and change in stock of raw materials, semi-finished and finished goods.

The estimates of Capital Formation can be prepared by following any of the three approaches i) Production or commodity flow approach, ii) Savings and flow of funds approach and iii) Expenditure approach. At the state level the estimates of Capital Formation are prepared by following expenditure approach as the other two approaches are not feasible at present. Similarly, the estimates of change in stock can not be prepared at the State level due to non availability of data. Thus, the State Regional Accounts Committee (RAC) has recommended that the states should concentrate their efforts to prepare estimates of Gross Fixed Capital Formation (GFCF) only.

The estimates of GFCF at the state level are being worked out i) by industry of use- i.e. separately for all the thirteen sectors of economy ii) by type of institutions- i.e. for public and private sector iii) by type of assets- i.e. separately for buildings, roads and bridges, other constructions, plant and machinery, transport equipment and other equipment (including furniture and fixtures).

The estimates of GFCF at the state level are prepared by adopting the standard methodology as suggested by Central Statistical Office (MOSPI), Govt. of India.

with modification from time to time. These estimates of GFCF are prepared at current and constant prices.

At current prices, the total GFCF of the State has been estimated at Rs. 51093.50 crore during the year 2011-12 as against Rs. 42615.59 crore during the year 2010-11 resulting in an increase of 19.9%. Similarly, at constant (2004-05) prices the total GFCF has been estimated of Rs. 32745.99 crore during the year 2011-12 as against Rs. 30090.21 crore during the year 2010-11, resulting an increase of 8.8%.

The composition of GFCF reveals that during 2011-12 at constant (2004-05) prices, in the total GFCF, the primary sector which consists of agriculture, forestry, fishing and mining sectors, has contributed 12.2 %, secondary sector which consists of manufacturing, construction and electricity, gas & water supply sectors, has contributed 54.1 % and tertiary sector which consists of Trade, Hotels & Restaurant, Transport Storage & Communication, Banking &, Public Administration & other Services has contributed 33.7 %. It shows that secondary sector has contributed maximum to the State GFCF followed by tertiary and primary sectors.

The estimates of GFCF by type of institutions show that at constant (2004-05) prices during the year 2011-12, GFCF has contributed 35.9 % in public sector and 64.1 % in private sector in the total GFCF of the State.

A look at GFCF by type of assets reveals that at constant (2004-05) prices during the year 2011-12, construction of buildings has contributed 29.4%, roads and bridges 4.4%, other construction 13.9% plant and machinery including other equipment 50.1% and transport equipments 2.2% in the GFCF. It shows that the contribution from plant and machinery in the total GFCF is the highest following by buildings, other construction, transport equipment and roads and bridges.

Part -I of this report gives Introduction Concepts, Definition and Methodology Part -II gives the estimates of GFCF at the State level by industry of use, by type of institutions and by type of assets at current and constant (2004-05) prices through Tables and Charts.

PART- I

INTRODUCTION, CONCEPTS , DEFINITIONS  
&  
METHODOLOGY

# INTRODUCTION

Capital is the most important factor of production particularly in a developing economy. The higher the rate of Capital Formation, the higher would be the rate of growth in National Product. Therefore, Capital Formation becomes the major determinant of economic growth.

Estimates of Capital Formation are of considerable importance in the context of planning and economic development as these throw light on the addition to the capital base of the economy and consequent change in the modes and capacity of production. Estimates of Capital Formation are among the important statistics required for determining and judging policy decisions in resource mobilisation, allocation of resources and for assessing the growth potential of the economy. Capital Formation is defined as that part of country's current output and imports which is not consumed or exported during the accounting period, but is set aside as an addition to its stock of capital goods. Net Capital Formation is distinguished from Gross Capital Formation in the sense that it is measured after allowances are made for consumption of fixed capital which includes foreseen obsolescence and accidental damages to the extent provided by the enterprises. Total Capital Formation can be broadly classified into Gross Fixed Capital Formation and change in stock of raw materials, semi-finished and finished goods.

Gross Fixed Capital Formation consists of additions to the assets of producers of tangible reproducible goods which have an expected life time of use of one year or more. The producers in question may be industries, producers of government services and producers of private non-profit services to households. The capital goods may include (i) durable goods acquired by producers during the accounting period (ii) improvements and alterations made in durable goods for extending their expected life span or their productivity (iii) all types of constructions, alterations and repair of buildings, highways, streets, bridges, culverts, railroad beds, railroads, subways, airports, parking areas, dams, drainages, wells and other irrigation sources, water and power projects, communication systems such as telephone and telegraph lines, land reclamations, bundings and other land improvements, planting and cultivating new orchards. The value of increment in livestock during the accounting period is also taken into account. Natural endowments representing durable goods like land, mineral deposits, etc. and classified as non-producible tangible assets are not included though dealer's margin,

service charges and other transfer costs in regard to transactions in such assets form part of Capital Formation. Construction works and durable goods which are meant primarily for military purposes are excluded. Outlays on new constructed dwellings (either by households or industries) and expenditure on major improvements and alterations of residential buildings form a part of Fixed Capital Formation, while the purchase of durable goods by households is not treated as Capital Formation. Expenditure on invisible assets such as patents, good-will etc., as also on health, research, education etc., for improvements in technology and productivity of human capital are excluded from the scope of Capital Formation.

Similarly, expenditure on current repairs and maintenance incurred to keep the fixed assets in proper working order is also not classified as Capital Formation. However, capital repairs consisting of significant alterations and additions to or replacement of parts of fixed assets having an expected life-time of use of one year or more and involving substantial outlays are to be taken into account. Such capital outlays on repairs are incurred to enhance the life and productivity of capital assets.

There is no problem of measurement of Capital Formation in case of resident industries located within the State boundaries. However, in case of organised enterprises both in public and private sectors having activities spread over more than one State as also in case of transportable fixed assets operating in several States, there are problems of identification and measurement in the context of State Domestic Capital Formation. Transportable fixed assets owned by State Enterprises pose no problem as these form a part of the Capital Formation of the State to which these assets belong. However, in case of Central Enterprises like Railways, Indian Airlines etc. transportable fixed assets are not to be taken into account.

The estimates of Capital Formation can be prepared by adopting either of three approaches (i) commodity flow approach (ii) flow of funds approach and (iii) the expenditure approach. The estimation of Capital Formation by adopting flow of funds approach is comparatively easier for the country as a whole than for individual States. The only approach which can be safely followed for estimating Capital Formation for the State is the expenditure approach. The estimates at the State level are, therefore, being prepared by following expenditure approach.

The estimates of Gross Fixed Capital Formation at the State level as per methodology provided by the Central Statistical Office are being worked out

(i) by industry of use (ii) by type of assets and (iii) by type of institutions both at current and constant prices.

The economy has been divided into thirteen sectors for estimation of Gross Fixed Capital Formation by Industry of use. These sectors are as under:

1. Agriculture
2. Forestry
3. Fishing
4. Mining & Quarrying
5. Manufacturing
  - 5.1 Registered
  - 5.2 Unregistered
6. Electricity, Gas and Water Supply
7. Construction
8. Trade, Hotels and Restaurants
9. Transport ,Storage and Communication.
  - 9.1 Railways
  - 9.2 Transport by Other Means
  - 9.3 Storage
  - 9.4 Communication
10. Banking and Insurance
11. Real Estate, Ownership of Dwellings and Business Services (only Residential Building Part).
12. Public Administration
13. Other Services

The institution-wise break up has got two main segments i.e. public sector and private sector. The public sector has been further segregated into Public Administration, Departmental Enterprises and Non-departmental Enterprises. Each segment further has three parts i.e. Central Government, State Government and Local Bodies.

Fixed assets have further been categorized into six items viz. buildings, roads and bridges, other constructions, plant and machinery, transport equipment and other equipment ( including furniture and fixtures). The details are as under:

**(I) Buildings including those under Construction:-** Value of work put in place on the construction of buildings meant entirely or primarily for dwellings, expenditure on construction of buildings meant entirely or primarily for industrial or commercial use such as buildings for factories, warehouses, office buildings, stores, hotels and restaurants, garages, farm buildings, educational, recreational and similar other purposes including outlays on major alterations and additions to these buildings are to be taken as Capital Formation. It also includes outlays on internal paintings of new buildings and on the installation of new permanent fixtures which are integral and immovable parts of structures such as fixed central heating, air conditioning, lighting,

plumbing and water supply facilities and all other fixed equipment customarily installed before the dwellings are occupied. However, repairs and replacements of worn out or damaged fixed equipment and fixtures are excluded. Wherever the price of the land was not available separately from that of the cost of building, in such cases 80% of the total expenditure has been taken as expenditure on buildings. This also includes expenditure given under the head work in progress but only in those cases where it was specifically mentioned that work in progress relates to building construction.

**(II) Roads and Bridges:** - Expenditure on construction works such as roads and bridges, culverts, streets etc. has been taken as capital expenditure.

**(III) Other Construction:-** Expenditure on other construction works such as drainage works, sewerage, car parking facilities, water and power projects, dams, bridges, railroads, streets, sewers, sub-ways and tunnels, harbours, piers and other harbour facilities, airports, pipe lines, oil wells, canal and water ways and flood control projects, athletic fields, electricity transmission lines, gas main pipes, telephone and telegraph lines etc. is covered under other construction. It also includes outlays on all land reclamation and land clearance irrespective of whether it represents an addition to total land availability or not, irrigation and flood control projects, dams and dikes which are part of these projects, clearance and afforestation of timber tracts and forests. Expenditure on planting and cultivating until they yield crops, on orchards, rubber plantations and other new holdings of fruit bearing and sap bearing plants which take more than a year to become productive is also included under it.

**(IV) Plant and Machinery:** - It covers all expenditure on acquisition of new power generating machinery, agricultural machinery, implements, industrial machinery, metal working machinery, cranes, tractors and forklifts equipments etc. Value of additions to, less disposal of breeding stock, draught animals, dairy cattle, sheep, lambs etc. raised for wool clipping have also been covered under plant and machinery.

**(V) Transport Equipment:-** It covers expenditure on transport equipment both mechanised as well as non-mechanised viz. cycles, cycle rickshaws, auto cars, buses, trucks and taxies etc.

**(VI) Other Equipment:** - Assets which could not be classified under any of the previous items have been placed under this head. It covers expenditure made on

furniture and fixtures viz. tables, chairs, almirahs, racks and wooden partitions etc. Expenditure on office equipment and small tools used by professionals have also been included.

The estimates of Gross Fixed Capital Formation at constant prices have been worked out by applying various price deflators for different items. The different price deflators used are as under:-

The estimates of expenditure made on buildings have been deflated with the help of index of cost of construction of building material viz. bricks, cement, steel, timber and wages paid to construction workers/labourers. The weights assigned to building material and to wage rates of construction workers have been supplied by CSO. In case of roads and bridges, weighted average index based on the price of bricks, bitumen and unskilled labourers has been used to arrive at estimates at constant prices. The estimates of expenditure made on other construction have been deflated with the weighted average index of bricks, steel, cement and wage rates of skilled and unskilled workers.

In the absence of availability of price indices of plant and machinery at State level, the wholesale price index of machinery and machine tools as available in RBI Bulletin, has been used to arrive at constant prices estimates. In case of transport equipment, the wholesale price index of transport equipment as available in RBI Bulletin, has been used for arriving at estimates at constant prices. Expenditure under other equipment is mainly on furniture and fixtures. In this case the wholesale price index of steel furniture has been used for arriving at constant prices estimates.

\*\*\*





## CONCEPTS AND DEFINITIONS

Domestic capital formation is defined as that part of country's current output and imports which is not consumed or exported during the accounting period but is set aside as addition to its stock of capital goods. Net capital formation is distinguished from gross capital formation that is measured after allowances are made for consumption of fixed capital which includes foreseen obsolescence and accidental damage to the extent provided by the enterprise.

Gross Capital Formation is measured by the total value of the (i) gross fixed capital formation (ii) changes in inventories and (iii) acquisitions less disposals of valuables. Total capital formation can be broadly classified into (i) fixed capital formation and (ii) changes in stocks of raw material, semi-finished and finished goods.

**Theoretically the estimates of capital formation can be prepared by following any of the three approaches listed below:**

- (a) Production or commodity flow approach:** In this approach the estimates can be prepared on the basis of availability of commodities used in capital formation by type of assets i.e. construction and machinery and equipment.
- (b) Savings and flow of funds approach:** In this approach the estimates can be prepared on the basis of finances available for capital formation i.e. saving and flow of funds from other States and rest of the world.
- (c) Expenditure Approach:** In this approach the expenditure incurred in type of assets namely, construction and machinery is estimated by industry of use and the GFCF estimates can be arrived at.

At national level, estimates are prepared by following all the above approaches and saving and flow of funds approach is taken as firm. At the State level, the estimates can be prepared by following expenditure approach as the other two approaches are not feasible at present. Similarly, the estimates of change in stock can not be prepared at State level due to non availability of data and open boundaries of the States. Thus, States RAC has also recommended that the States should concentrate their efforts to prepare estimates of GFCF only.

The estimates of Gross Fixed Capital Formation (GFCF) at the State level are being worked out (i) by industry of use (ii) by type of institutions and (iii) by type of assets both at current and constant prices.

**GFCF by Industry of use:**

The economy has been divided into thirteen sectors for estimation of GFCF by Industry of use.

**GFCF by type of institutions**

The institution-wise break up has got two main segments i.e. public sector and private sector. The public sector has been further segregated into Public Administration, Departmental Enterprises and Non-departmental Enterprises. Each segment further has three parts i.e. Central Government, State Government and Local Bodies.

**GFCF by type of Assets**

Fixed assets have been categorized into six items viz. buildings, roads and bridges, other constructions, plant and machinery, transport equipment and other equipment (including furniture and fixtures).

The estimates of GFCF for each sector are prepared separately for public and private sector and then for buildings, roads and bridges, other construction, plant and machinery, transport equipment and other equipment separately under public and private part.

## METHODOLOGY

The estimates of Capital Formation can be prepared by adopting either of the approaches (i) direct approach i.e. expenditure approach (ii) indirect approach i.e. commodity flow approach, (iii) flow of funds approach. It is difficult to adopt the indirect approach or flow of funds approach at the State level because the data on production and imports and exports of capital goods relating to the domestic boundaries of the State and the data on inflow of capital from outside the State and vice versa is not available. The only approach which can be adopted for estimating the Capital Formation in the State is the direct approach i.e. expenditure approach. The estimates at the State level are, therefore, being prepared by following expenditure approach.

The methodology followed for preparing estimates from all the sectors of the economy is given below.

### **1. Agriculture (including livestock)**

For preparation of Gross Fixed Capital Formation estimates, this sector has been divided into two parts viz. Public and Private. The estimates of Gross Fixed Capital Formation in respect of public sector for Central Government Administration are being prepared on the basis of data collected from various Central Government offices and Central Government Non-departmental Enterprises located in the State of Haryana. As far as State Government part is concerned, the data of State Government Administration and State Government departmental Enterprises have been culled out from State Government budget documents. Further, the data relating to State Government Non-departmental Enterprises have been culled out from the balance sheets of enterprises. In case of Local Bodies, the data relating to Haryana State Agricultural Marketing Board and Market Committees in the State is collected directly from the concerned offices. In case of private sector the estimates are being prepared on the basis of All India Debt and Investment Survey, (AIDIS) 2002-03. This survey provides necessary data on Gross Fixed Capital Formation separately for rural and urban households.

Increment in livestock measured in terms of breeding stock, draught animals, dairy cattle and other animals raised for wool clipping have been estimated based on data available through livestock censuses. All livestock excepting (i) bulls and bullocks over three years not in use for breeding or work (ii) cows over three years

not in use for work or breeding purpose (iii) young male & female stock (iv) goats under one year (v) female goats of one year and above and not in milk (vi) pigs and poultry are taken to form part of fixed capital formation. The number of livestock estimated has been evaluated at the average wholesale prices.

**(A) Public Sector:** Public Sector has been divided into three parts viz. Public Administration, Departmental Enterprises and Non-departmental Enterprises.

**(I) Public Administration:-** It covers Central Govt. Administration, State Govt. Administration and Local Bodies.

**(a) Central Government Administration:** The estimates of Capital Formation relating to Central Govt. Administration have been prepared by taking into account the expenditure made on fixed assets by Central Government offices in the State viz. Central Soil Salinity Research Institute Karnal, Regional Station of Forage Production Hisar, Sugarcane Breeding Regional Centre Karnal, Agriculture Implement Training Institute Hisar.

**(b) State Government Administration:-** The data relating to Capital Formation in respect of State Govt. Administration have been culled out from the State Govt. Budget Documents. The revenue heads taken into account are Agriculture, Soil & Water Conservation, Command Area Development Authority, Crop Husbandry, Animal Husbandry and Dairy Development. The Capital heads included are Soil Conservation and Command Area Development Authority, Animal Husbandry and Dairy Development.

**(c) Local Bodies:-** Expenditure made by Market Committees and Haryana State Agricultural Marketing Board have been taken into account in this part.

**(II) Departmental Enterprises:-** The expenditure made by State Government Departmental Enterprises has also been culled out from the State Government Budget Documents. The departmental enterprises are un-incorporated enterprises owned and controlled by the public authorities. The revenue heads included are minor irrigation and major and medium irrigation. The capital heads covered are major & medium irrigation.

**(III) Non-departmental Enterprises:-** The expenditure made on fixed assets by Haryana Land Reclamation and Development Corporation have been placed under the head State Govt. Non-departmental Enterprises.

**(B) Private Sector:-** The estimates of Gross Fixed Capital Formation for private part of agriculture sector have been prepared on the basis of data as given in All India Debt and Investment Survey 2002-03 Report. In order to achieve better results an attempt has been made to segregate the items of Capital Formation into as many parts as possible, depending upon the availability of data. For each item separate indicators as given below have been used to project the benchmark year estimates to subsequent years.

**(a) Reclamation of Land, Bunding and other Land Improvement:-** The data relating to expenditure on soil conservation have been used to prepare combined physical indicators for projecting the benchmark year estimates to the subsequent years.

**(b) Wells and Other Irrigation Resources :-** The data relating to number of wells has been collected from the Director Land Records, Haryana. The data relating to construction of new irrigation resources have been extrapolated on the basis of indicator which have been built up by taking into account net area irrigated in the State during the year.

**(c) Agricultural Machinery and Transport Equipment:-** Indicator for agricultural machinery and transport equipment has been built up on the basis of value of agricultural implements (tractors , harvesters and other heavy machinery etc.)

**(d) Farm Houses :-** In case of farm houses, the bench mark year estimates have been extrapolated on the basis of indicator prepared by taking into account the value of agricultural production and increment in livestock.

**(e) Others:-** For others, the relevant indicator has been built up by taking into account the index of agriculture production (all commodities) during each year. The indicator so built up has been used for extrapolating figure of the benchmark year.

## **2. Forestry**

The estimates of capital expenditure on forest preservation, extension, etc. in the public sector have been worked out from the State Government Budget Documents. The expenditure made on forest preservation and extension by panchayat and panchayat samities have also been included under public sector . In case of private sector, the estimates are being prepared on the basis of data collected from Forest Department, Haryana.

### **3. Fishing**

The estimates of public sector are based upon the data provided in State Government Budget Documents. In case of private sector, the estimates are based upon the data collected from Fisheries Department, Haryana.

### **4. Mining and Quarrying**

For estimation of public sector Gross Fixed Capital Formation, expenditure made under the head mines and minerals in the State Government Budget have been taken into account. In case of private sector, data is being collected from private miners through District Statistical Offices.

### **5. Manufacturing**

**5.1 Registered Manufacturing:-** Registered Manufacturing sector covers all manufacturing and processing establishments which are registered under Indian Factories Act., 1948. The estimates of Gross Fixed Capital Formation have been prepared on the basis of data available in Annual Survey of Industries (ASI) returns. Annual Survey of Industries covers the entire factory sector comprising of factories registered under section 2m(i) and 2m(ii) of Indian Factories Act 1948 and functioning within jurisdiction of Haryana. These sections refer to the units employing 10 or more workers with power and 20 or more workers without power on any day of the preceding twelve months. The estimates of gross fixed capital formation are prepared separately for public and private part as under.

#### **A. Public Sector**

**I. Public Administration:-** No factory is reported to have been covered under these heads viz. Central Govt. Administration, State Government Administration and Local Bodies.

**II Departmental Enterprises:-** It covers workshops of Northern Railways Kalka , Jagadhri and Haryana Coach Builders Rohtak. Similarly, Government Press Kurukshetra and Faridabad have also been covered under manufacturing sector.

#### **III Non- department Enterprises:**

**(a) Central Govt. Non-departmental Enterprises:-** It covers Hindustan Machine Tools Pinjore, National Fertilizers Ltd. Panipat, Maruti Udyog Ltd. Gurgaon and Bharat Petroleum Panipat.

**(b) State Govt. Non-departmental Enterprises:-** It covers one unit of Haryana Agro Industries Corporation, one unit of Haryana State Co-operative Supply and

Marketing Federation and two units of Haryana Dairy Development Corporation. The requisite data for these units is collected directly.

## **B. Private Sector**

Annual Survey of Industries (ASI) provides information on GFCF at State level. Under ASI, all units have been divided into two parts i.e. census part and sample part.

**Census Part:-** All units in census part are covered on complete enumeration basis. Adjustment for non-responsive units is also made.

**Sample Part:-** In case of sample part, a part of units is covered and the remaining units are accounted for by using multiplier.

**5.2 Unregistered Manufacturing:-** Unregistered manufacturing sector covers all manufacturing and processing activities which are not registered under 2m(i) and 2m(ii) of the Indian Factories Act, 1948. It includes Directory Manufacturing Establishments, Own Account Enterprises and Non-directory Manufacturing Establishments. It is covered under private sector.

The benchmark year estimates of GFCF are based on the results of Enterprise Survey 2005-06. These estimates are moved forward with the help of index of Gross State Domestic Product of unregistered manufacturing sector at current prices.

## **6. Electricity, Gas & Water Supply**

In the State of Haryana, there are five undertakings which are engaged in generation, transmission and distribution of electricity viz. Haryana Vidyut Parsaran Nigam Ltd., Haryana Power Generation Corporation Ltd., Uttar Haryana Bijli Vitran Nigam Ltd. and Dakshin Haryana Bijli Vitran Nigam Ltd. and National Hydel Power Corporation Faridabad. The expenditure made on different items of Capital Formation by these companies as available in their balance sheets of different years have been taken into account.

In case of water supply, the expenditure incurred on water supply schemes by the Municipal Committees/Notified Area Committees in urban areas has been taken into account. So, the relevant figures have been taken from the budgets of Municipal Committees/ Notified Area Committees. This expenditure has been placed under the head "Other Construction" because in case of water supply schemes, most of the expenditure is made on reservoirs and laying of pipelines etc.



In case of Bio-Gas, the expenditure on Institutional Community Bio-Gas Programme incurred by the Department of Renewable Energy have been taken into account. This expenditure has been placed under the head of "Other Construction".

## **7. Construction**

The Gross Fixed Capital Formation in the construction sector comprises net addition to machinery and equipment, tools and implements of construction enterprises. Any new construction expenditure in the form of office buildings etc. of these enterprises have also been included in the estimates.

**(a) Public Sector:-** In case of Public Administration, the expenditure made by the State Public Works Department (B&R) on machinery and equipment have been taken under the State Government Administration in respect of State PWD (B&R).The expenditure made on machinery and equipment have been culled out from the State Government Budget Documents. Under the Head 'Local Bodies', Housing Board Haryana and Haryana Urban Development Authority are covered and the relevant data have been taken from their annual statement of accounts/ balance sheets.

**(b) Private Sector :-** The bench-mark year estimates of GFCF in respect of unorganised part are based on 29<sup>th</sup> Round of National Sample Survey. The 29<sup>th</sup> Round NSS data mainly pertain to own account workers alongwith small employers, the nature of whose activities were more or less similar to those of own account workers engaged in construction activity. The survey covers the unorganised sector of the different non-agricultural industries. The unorganised sector for the purpose of the 29<sup>th</sup> Round inquiry was defined as the enterprise under own account workers and those employers who did not usually employ more than five hired workers. The bench mark year estimates have been moved forward with the help of indicator prepared on the basis of rural population and rural income with equal weights for the rural sector and urban income and urban population with equal weights for the urban sector. The index has been worked out on the assumption that with change in income and population, construction activity also undergoes similar rate of change leading to corresponding changes in number of construction enterprises.

## 8 Trade, Hotels and Restaurants

**Trade:-** The GFCF estimates for this sector have been prepared separately for public and private sector.

**(a) Public Sector :-** The public sector covers

**(i) Central Government Non - Departmental Enterprises:-** The estimates of these enterprises are based on the data provided in annual accounts reports of Central Government Non-Departmental Enterprises viz. Cotton Corporation of India, Indian Oil Corporation, Steel Authority of India, Hindustan Petroleum, National Handloom Corporation and Food Corporation of India. Information from these Central Government Non- departmental Enterprises is collected from their regional/head offices.

**(ii) State Government Non-departmental Enterprises :-** This covers Haryana Seeds Development Corporation. Information for this corporation is culled out from its annual accounts report.

**(b) Private Sector :-** The bench mark year estimates of trading part of private sector are being prepared on the basis of results culled out from the report “ State Level Results on Small Trading Units in India, July 1990 to June 1991.” The bench mark year estimates are projected to subsequent years with the help of the index of total number of shops & commercial establishments in the State.

### Hotels and Restaurants

**(a) Public Sector:-** The estimates of public sector are being prepared by culling out data from budget documents of Central and State Government Non-departmental Enterprises which cover Indian Tourism Development Corporation Ltd. and Haryana Tourism Corporation only.

**(b) Private Sector :-** The bench mark year estimates for private sector are being prepared on the basis of results of Enterprise Survey 2006-07. The bench mark year estimates are projected to subsequent year with the help of the index of total number of hotels & restaurants in the State.

## 9. Transport, Storage and Communication

**(i) Railways:-** The Railway Sector being supra Regional Sector the estimates of Gross Fixed Capita Formation are prepared and supplied by CSO.

**(ii) Transport by Other Means :-** In case of public sector, the estimates are being prepared by culling out requisite data from State Govt. Budget Documents. For private sector, the bench mark year estimates are based on data provided in the

NSSO Report “Mechanised and Non-Mechanised Passengers and Goods Transport Survey 1993-94.” The bench mark year estimates are projected to subsequent years with the index of number of vehicles.

**(iii) Storage:** - This sub-sector covers Central Warehousing Corporation and Haryana Warehousing Corporation in the public sector. The data for these corporations is culled out from their Annual Accounts Reports. The data for private sector is being collected from all the cold storages in the State through district agencies.

**(iv) Communication:-** The Communication sub sector being supra-regional Sector the estimates of Gross Fixed Capital Formation are prepared and supplied by CSO.

## **10. Banking and Insurance**

The Banking and Insurance Sector being supra - regional sector the estimates estimates of Gross Fixed Capital Formation estimates are prepared and supplied by CSO.

## **11. Real Estate, Ownership of Dwellings and Business Services (Residential Buildings part only)**

The economic activities covered in this sector are Real Estate Ownership of Dwellings, and Business Services. Gross Fixed Capital Formation estimates for these activities are prepared separately for public and private sector.

**(a) Public Sector:-** The estimates of Gross Fixed Capital Formation in respect of Real Estate, Ownership of Dwellings are prepared by culling out requisite data from State Government Budget Documents.

**(b) Private Sector:-** The benchmark year estimates of residential buildings have been prepared on the basis of data provided in AIDIS 2002-03 report. The bench mark year estimates have been carried forward to subsequent years with the help of index of the annual additions in the number of residential dwellings to obtain the constant prices estimates and then super imposed by the indices of housing & building material and wages of construction labour separately for rural and urban areas to get the current prices estimates.

## **12. Public Administration**

Administrative Departments include all offices of the Central Government, State Government and Local Bodies viz. Municipal Committees, Notified Area Committees, Improvement Trusts, Cantonment Boards, Gram Panchayats and Panchayat

Samities etc. engaged in administration and regulation of the public order. The administrative departments include the activities relating to the collection of taxes, defence services, administrative services, such as police, jails, administration of justice, audit, cooperation, broadcasting, labour and employment, education and industries, etc.

**(a) Central Government:-** The estimates of Gross Fixed Capital Formation in respect of Central Government public administration are prepared and supplied by CSO.

**(b) State Government:-** The main source of information is the publication "Economic Classification of the Haryana Government Budget" brought out by this Department. After allocating the figures of expenditure to different sectors depending upon their industry of use, the residual part have been placed under public administration. This publication does not provide separate figures of expenditure made on transport equipment, but the same have been clubbed together with machinery and equipment. The figures of expenditure on transport equipment have been segregated from machinery and equipment. Similarly, State Government Budget does not provide separate figures of expenditure on furniture and fixture, office equipment and other equipments, etc. All such type of expenditure is being shown under 'commodity and services'. In order to estimate the expenditure on aforesaid equipments, a type study was conducted and on the basis of the results, the figures of expenditure made by State Government on furniture and fixture and office equipment etc. have been estimated and placed under the column 'Other Equipment'.

**(c) Local Bodies:-** Capital expenditure made by Municipal Committees/Notified Area Committees, Improvement Trusts, Cantonment Boards, Panchayat Samities and Gram Panchayats have been covered under this head. Part of expenditure made by the Local Bodies which have already been included under any other sector according to their industry of use, have been deducted from their total expenditure and the remaining has been placed under this part. The expenditure incurred by Municipal Committees/Notified Area Committees on construction of buildings and reservoirs, machinery and equipments relating to water supply schemes have been placed under the sector 'Electricity, Gas and Water Supply'. Similarly, expenditure made by Panchayat Samities and Gram Panchayats on tree

plantation have been allocated to Forestry Sector and the remaining expenditure on fixed assets has been taken under public administration.

### **13. Other Services**

This sector covers educational, medical and health, sanitary, cultural and personal services. The estimates of GFCF for this sector are prepared separately for public and private sector.

**(a) Public Sector:-** In case of public sector, the estimates are compiled by analysing the budget documents and annual reports. The figures of State Government Administration have been taken from State Govt. Budget Documents. Kurukshetra Development Board, Kurukshetra, Mewat Development Board, Zila Sanik Boards and Haryana Khadi & Village Industries Board are covered under Local Bodies. Central Government Non- departmental Enterprises cover the Engineers India Ltd., New Delhi and State Government Non-departmental Enterprises cover Haryana Backward Classes Nigam and Haryana Scheduled Castes Finance and Development Corp. Ltd.

**(b) Private Sector:-** The benchmark year estimates of Gross Fixed Capital Formation for services like educational, medical and health, community and cultural, sanitary and personal services have been prepared on the basis of data available in the report of Enterprise Survey 2006-07. The bench mark year estimates have been moved forward to subsequent years with the help of Gross Fixed Capital Formation in Public Sector for the respective group.

\*\*\*

## PART II

ESTIMATES OF GFCF AT STATE LEVEL BY  
INDUSTRY OF USE, BY TYPE OF  
INSTITUTIONS AND BY TYPE ASSETS OF  
AT CURRENT AND CONSTANT (2004-05)  
PRICES (TABLES AND CHARTS)



TABLE 4.1

ESTIMATES OF GROSS FIXED CAPITAL FORMATION IN HARYANA  
BY INDUSTRY OF USE AT CURRENT PRICES

(₹. in Lakh)

Sr. No.	Industry	2004-05	2005-06	2006-07	2007-08	2008-09	2009-10(R)	2010-11(R)	2011-12(P)
1	Agriculture	113061	130066	166891	246716	291231	364961	442928	614718
2	Forestry	17160	6784	6776	7316	9224	7022	6307	6595
3	Fishing	391	774	522	791	982	966	901	686
4	Mining & Quarrying	4785	4944	5112	5433	5453	1879	89	79
	Sub Total : Primary	135397 (9.3)	142568 (8.6)	179301 (8.9)	260256 (9.8)	306890 (9.7)	374828 (10.4)	450225 (10.6)	622078 (12.2)
5	Manufacturing	652850	744955	889880	1137109	1299834	1287616	1557508	1976909
	5.1 Registered	366394	431572	530951	738649	873301	817828	1031669	1330774
	5.2 Un-registered	286456	313383	358929	398460	426533	469788	525839	646135
6	Electricity, Gas and Water Supply	116690	158002	245683	306875	450695	468235	702852	678767
7	Construction	35514	37430	40008	68272	70473	100881	94399	107472
	Sub Total : Secondary	805054 (55.5)	940387 (56.5)	1175571 (58.0)	1512256 (57.2)	1821002 (57.5)	1856732 (51.5)	2354759 (55.2)	2763148 (54.1)
8	Trade, Hotels & Restaurants	8621	9295	9662	12908	37324	39783	40811	44451
	8.1 Trade	4970	5349	5436	8556	31639	34305	35057	37911
	8.2 Hotels & Restaurants	3651	3946	4226	4352	5685	5478	5754	6540
9	Transport, Storage & Communication	87361	123445	140709	193622	246414	320005	317060	331999
	9.1 Railways	4912	31520	33821	75165	32508	58851	62311	68542
	9.2 Transport by Other means	29988	27794	40904	41835	50422	41788	52696	54825
	9.3 Storage	560	503	935	1254	598	8092	14192	3864
	9.4 Communication	51901	63628	65049	75368	162886	211274	187861	204768
10	Banking & Insurance	18923	16006	17140	24742	15972	29274	35783	44156
11	Real Estate, Ownership of Dwellings and Business services (only Residential Buildings Part)	243516	259089	293313	338659	389567	425164	490510	567462
12	Public Administration	134451	151465	184014	265885	301309	494153	516331	661907
13	Other Services	18338	20831	26722	38014	46742	62320	56080	74149
	Sub Total : Tertiary	511210 (35.2)	580131 (34.9)	671560 (33.1)	873830 (33.0)	1037328 (32.8)	1370699 (38.1)	1456575 (34.2)	1724124 (33.7)
	<b>Total</b>	<b>1451961 (100.0)</b>	<b>1663086 (100.0)</b>	<b>2026432 (100.0)</b>	<b>2646342 (100.0)</b>	<b>3165220 (100.0)</b>	<b>3602259 (100.0)</b>	<b>4261559 (100.0)</b>	<b>5109350 (100.0)</b>

Note: Figures in brackets are percentage to total

R: Revised

P: Provisional



TABLE 4.2

ESTIMATES OF GROSS FIXED CAPITAL FORMATION IN HARYANA  
BY INDUSTRY OF USE AT CONSTANT (2004-05) PRICES

(₹. in Lakh)

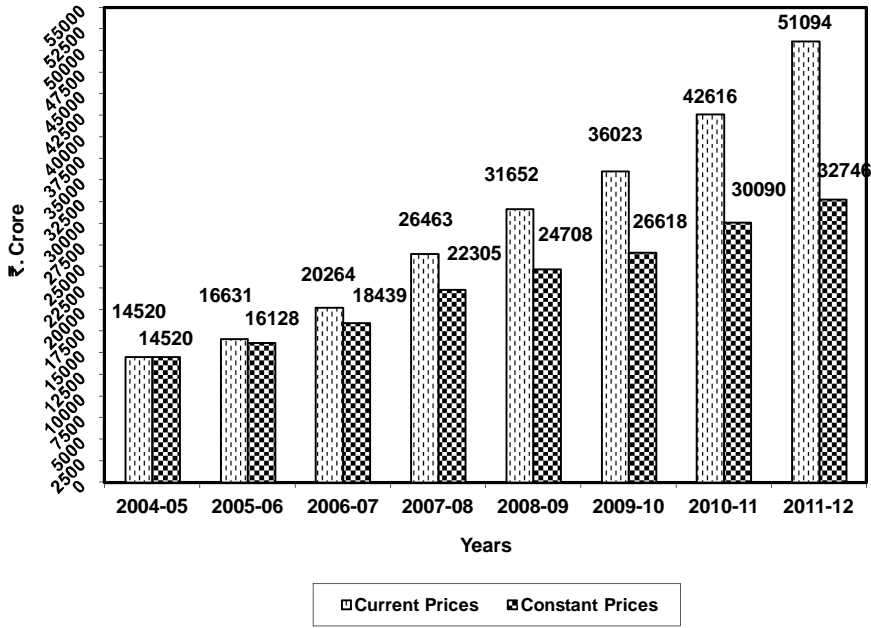
Sr. No.	Industry	2004-05	2005-06	2006-07	2007-08	2008-09	2009-10(R)	2010-11(R)	2011-12(P)
1	Agriculture	113061	124293	152754	203321	213972	239868	248751	291626
2	Forestry	17160	6594	6212	6005	6814	4910	3940	3719
3	Fishing	391	752	479	651	734	695	568	395
4	Mining & Quarrying	4785	4832	4644	4467	4040	1453	65	51
	<b>Sub Total : Primary</b>	<b>135397</b>	<b>136471</b>	<b>164089</b>	<b>214444</b>	<b>225560</b>	<b>246926</b>	<b>253324</b>	<b>295791</b>
		(9.3)	(8.4)	(8.9)	(9.6)	(9.1)	(9.3)	(8.4)	(9.0)
5	Manufacturing	652850	722533	806716	970355	1026993	1000668	1191671	1437158
	5.1 Registered	366394	417477	481854	638981	700419	657441	829615	1032749
	5.2 Un-registered	286456	305056	324862	331374	326574	343227	362056	404409
6	Electricity, Gas and Water Supply	116690	153153	225064	263867	375053	336477	526416	445766
7	Construction	35514	36601	36701	56042	52102	70581	58520	61543
	<b>Sub Total : Secondary</b>	<b>805054</b>	<b>912287</b>	<b>1068481</b>	<b>1290264</b>	<b>1454148</b>	<b>1407726</b>	<b>1776607</b>	<b>1944467</b>
		(55.5)	(56.6)	(57.9)	(57.9)	(58.9)	(52.9)	(59.1)	(59.4)
8	Trade, Hotels & Restaurants	8621	9063	8905	11464	28606	29433	28427	28661
	8.1 Trade	4970	5209	5095	7918	24422	25626	24694	24831
	8.2 Hotels & Restaurants	3651	3854	3810	3546	4184	3807	3733	3830
9	Transport, Storage & Communication	87361	119748	129467	167031	201327	253158	238283	236452
	9.1 Railways	4912	30611	30577	63131	25501	44391	44565	45447
	9.2 Transport by Other means	29988	27063	38793	38562	43989	35379	43244	42598
	9.3 Storage	560	490	797	1029	463	5834	9387	2201
	9.4 Communication	51901	61584	59300	64309	131374	167554	141087	146206
10	Banking & Insurance	18923	15549	15594	21448	12693	23869	27037	31370
11	Real Estate, Ownership of Dwellings and Business services (only Residential Buildings Part)	243516	252381	264492	274766	286350	298094	305806	317909
12	Public Administration	134751	147069	168623	219827	227237	357948	343145	376459
13	Other Services	18338	20276	24258	31218	34841	44645	36392	43490
	<b>Sub Total : Tertiary</b>	<b>511510</b>	<b>564086</b>	<b>611339</b>	<b>725754</b>	<b>791054</b>	<b>1007147</b>	<b>979090</b>	<b>1034341</b>
		(35.2)	(35.0)	(33.2)	(32.5)	(32.0)	(37.8)	(32.5)	(31.6)
	<b>Total</b>	<b>1451961</b>	<b>1612844</b>	<b>1843909</b>	<b>2230462</b>	<b>2470762</b>	<b>2661799</b>	<b>3009021</b>	<b>3274599</b>
		(100.0)	(100.0)	(100.0)	(100.0)	(100.0)	(100.0)	(100.0)	(100.0)

Note: Figures in brackets are percentage to total

R: Revised

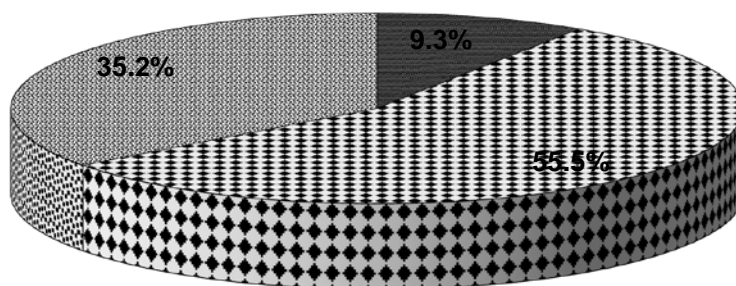
P: Provisional

### Estimates of Gross Fixed Capital Formation in Haryana

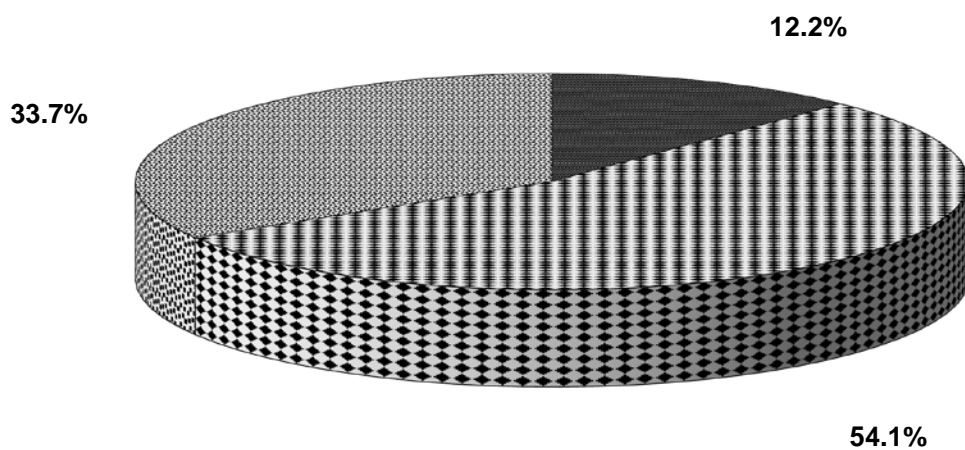


### Composition of Gross Fixed Capital Formation in Haryana by Broad Sectors At Current Prices

2004-05



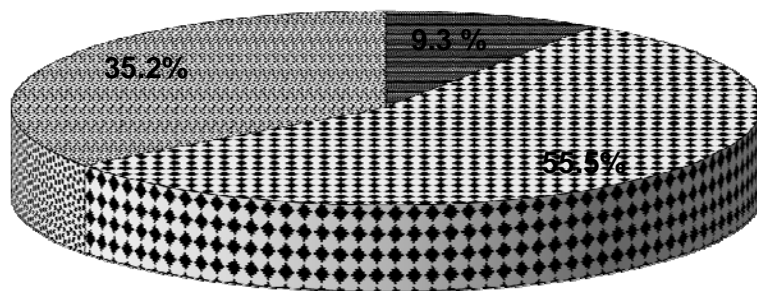
2011-12



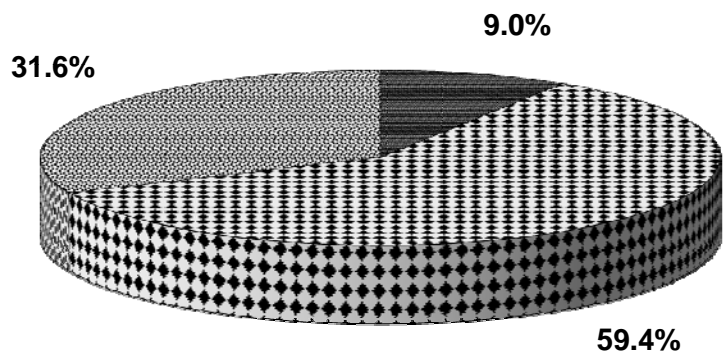
■ Primary ■ Secondary ■ Tertiary

## Composition of Gross Fixed Capital Formation in Haryana by Broad Sectors At Constant Prices

2004-05



2011-12



■ Primary   ■ Secondary   ■ Tertiary

**TABLE 4.3**

**ESTIMATES OF GROSS FIXED CAPITAL FORMATION IN HARYANA  
BY TYPE OF INSTITUTIONS AT CURRENT PRICES**

(₹. in Lakh)

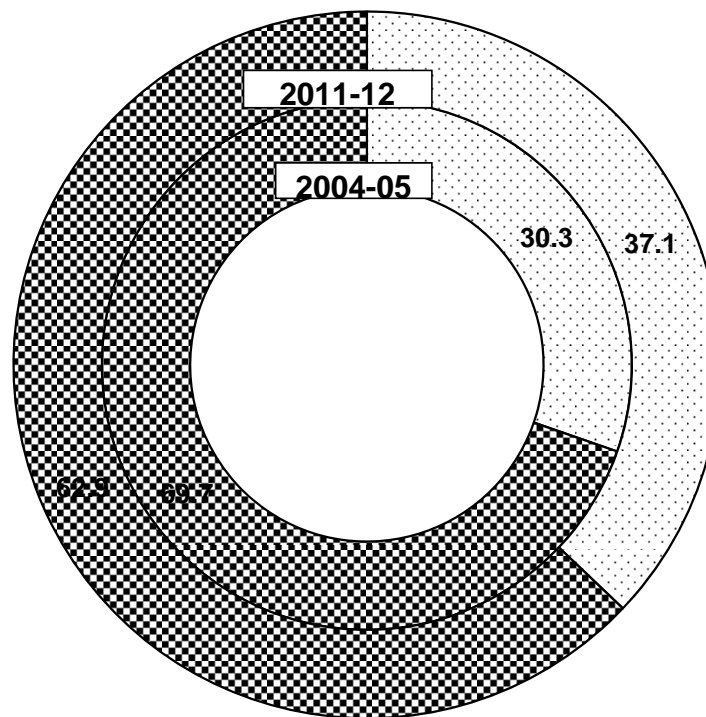
Sr. No.	Institutions	2004-05	2005-06	2006-07	2007-08	2008-09	2009-10(R)	2010-11(R)	2011-12(P)
<b>I</b>	<b>Public Administration</b>	<b>199671</b>	<b>216899</b>	<b>257550</b>	<b>393011</b>	<b>440973</b>	<b>676064</b>	<b>658367</b>	<b>824225</b>
	a) Central Government	36662	29040	32680	75239	54264	191300	207201	224401
	b) State Government	88955	115246	142237	196032	255718	295481	290202	315000
	c) Local Bodies	74054	72613	82633	121740	130991	189283	160964	284824
<b>II</b>	<b>Departmental Enterprises</b>	<b>42076</b>	<b>90307</b>	<b>98857</b>	<b>176724</b>	<b>131987</b>	<b>146356</b>	<b>142641</b>	<b>164737</b>
	a) Central Government	4912	31520	33821	75165	32508	58851	62311	68542
	b) State Government	37164	58787	65036	101559	99479	87505	80330	96195
<b>III</b>	<b>Non Departmental Enterprises</b>	<b>197640</b>	<b>231300</b>	<b>422900</b>	<b>469475</b>	<b>807303</b>	<b>682396</b>	<b>940147</b>	<b>905777</b>
	a) Central Government	79965	68280	170522	149225	317579	175336	<b>189705</b>	<b>250479</b>
	i) Non-financial	68018	59786	163219	138142	307729	153149	169737	225821
	ii) Financial	11947	8494	7303	11083	9850	22187	19968	24658
	b) State Government	<b>117675</b>	<b>163020</b>	<b>252378</b>	<b>320250</b>	<b>489724</b>	<b>507060</b>	<b>750442</b>	<b>655298</b>
	i) Non-financial	117600	162942	252293	319686	489680	507046	750428	655298
	ii) Financial	75	78	85	564	44	14	14	0
	<b>A. Total : Public Sector</b>	<b>439387</b>	<b>538506</b>	<b>779307</b>	<b>1039210</b>	<b>1380263</b>	<b>1504816</b>	<b>1741155</b>	<b>1894739</b>
		<b>(30.26)</b>	<b>(32.38)</b>	<b>(38.46)</b>	<b>(39.27)</b>	<b>(43.61)</b>	<b>(41.77)</b>	<b>(40.86)</b>	<b>(37.08)</b>
	<b>B-Total : Private Sector</b>	<b>1012574</b>	<b>1124580</b>	<b>1247125</b>	<b>1607132</b>	<b>1784957</b>	<b>2097443</b>	<b>2520404</b>	<b>3214611</b>
		<b>(69.74)</b>	<b>(67.62)</b>	<b>(61.54)</b>	<b>(60.73)</b>	<b>(56.39)</b>	<b>(58.23)</b>	<b>(59.14)</b>	<b>(62.92)</b>
	<b>C- Grand Total (A+B)</b>	<b>1451961</b>	<b>1663086</b>	<b>2026432</b>	<b>2646342</b>	<b>3165220</b>	<b>3602259</b>	<b>4261559</b>	<b>5109350</b>
		<b>(100.0)</b>	<b>(100.0)</b>	<b>(100.0)</b>	<b>(100.0)</b>	<b>(100.0)</b>	<b>(100.0)</b>	<b>(100.0)</b>	<b>(100.0)</b>

Note: Figures in brackets are percentage to total

R: Revised

P: Provisional

**Contribution of Public and Private Sector in Gross Fixed Capital Formation  
At Current Prices**



□ Public Sector    ▣ Private Sector

TABLE 4.4

ESTIMATES OF GROSS FIXED CAPITAL FORMATION IN HARYANA  
BY TYPE OF INSTITUTIONS AT CONSTANT (2004-05) PRICES

(₹. in Lakh)

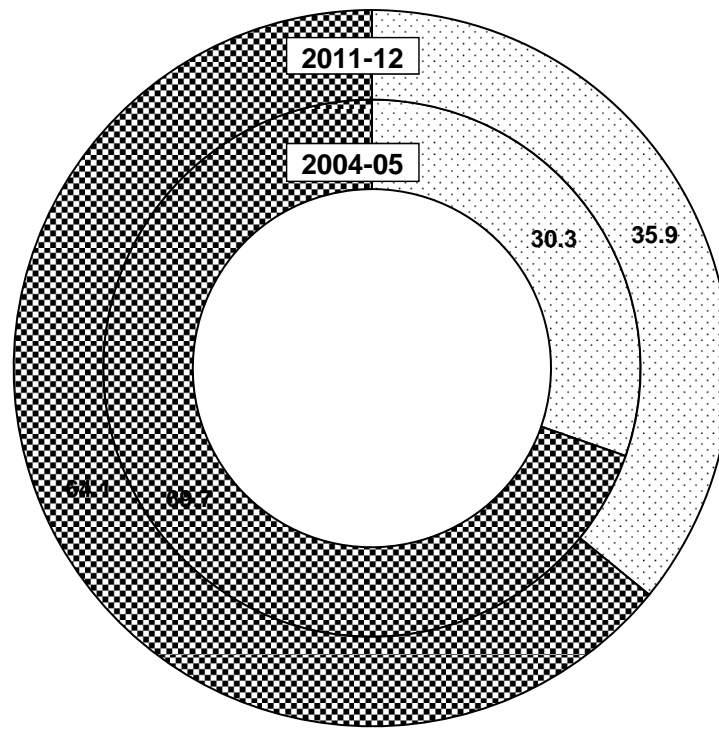
Sr. No.	Institutions	2004-05	2005-06	2006-07	2007-08	2008-09	2009-10(R)	2010-11(R)	2011-12(P)
<b>I</b>	<b>Public Administration</b>	<b>199671</b>	<b>209552</b>	<b>235924</b>	<b>324444</b>	<b>330930</b>	<b>485549</b>	<b>431826</b>	<b>469954</b>
	a) Central Government	36662	28201	29503	61763	40894	144402	145586	128042
	b) State Government	88955	111508	130990	162658	193047	209532	185391	180355
	c) Local Bodies	74054	69843	75431	100023	96989	131615	100849	161557
<b>II</b>	<b>Departmental Enterprises</b>	<b>42076</b>	<b>86755</b>	<b>90406</b>	<b>147670</b>	<b>101606</b>	<b>107284</b>	<b>97366</b>	<b>101878</b>
	a) Central Government	4912	30611	30577	63131	25501	44391	44565	45447
	b) State Government	37164	56144	59829	84539	76105	62893	52801	56431
<b>III</b>	<b>Non Departmental Enterprises</b>	<b>197640</b>	<b>224094</b>	<b>386001</b>	<b>404129</b>	<b>658228</b>	<b>490333</b>	<b>700853</b>	<b>602438</b>
	a) Central Government	<b>79965</b>	<b>66049</b>	<b>154881</b>	<b>129098</b>	<b>254209</b>	<b>126388</b>	<b>143340</b>	<b>169217</b>
	i) Non-financial	68018	57827	148244	119393	246054	107917	127329	150292
	ii) Financial	11947	8222	6637	9705	8155	18471	16011	18925
	b) State Government	<b>117675</b>	<b>158045</b>	<b>231120</b>	<b>275031</b>	<b>404019</b>	<b>363945</b>	<b>557513</b>	<b>433221</b>
	i) Non-financial	117600	157969	231042	274572	403985	363934	557504	433221
	ii) Financial	75	76	78	459	34	11	9	0
	<b>A. Total : Public Sector</b>	<b>439387</b>	<b>520401</b>	<b>712331</b>	<b>876243</b>	<b>1090754</b>	<b>1083166</b>	<b>1230045</b>	<b>1174270</b>
		<b>(30.26)</b>	<b>(32.27)</b>	<b>(38.63)</b>	<b>(39.29)</b>	<b>(44.15)</b>	<b>(40.69)</b>	<b>(40.88)</b>	<b>(35.86)</b>
	<b>B-Total : Private Sector</b>	<b>1012574</b>	<b>1092443</b>	<b>1131578</b>	<b>1354219</b>	<b>1380008</b>	<b>1578633</b>	<b>1778976</b>	<b>2100329</b>
		<b>(69.74)</b>	<b>(67.73)</b>	<b>(61.37)</b>	<b>(60.71)</b>	<b>(55.85)</b>	<b>(59.31)</b>	<b>(59.12)</b>	<b>(64.14)</b>
	<b>C- Grand Total (A+B)</b>	<b>1451961</b>	<b>1612844</b>	<b>1843909</b>	<b>2230462</b>	<b>2470762</b>	<b>2661799</b>	<b>3009021</b>	<b>3274599</b>
		<b>(100.0)</b>	<b>(100.0)</b>	<b>(100.0)</b>	<b>(100.0)</b>	<b>(100.0)</b>	<b>(100.0)</b>	<b>(100.0)</b>	<b>(100.0)</b>

Note: Figures in brackets are percentage to total

R: Revised

P: Provisional

**Contribution of Public and Private Sector in Gross Fixed Capital Formation  
At Constant (2004-05) Prices**



□ Public Sector    ▣ Private Sector



**TABLE 4.5****ESTIMATES OF GROSS FIXED CAPITAL FORMATION IN HARYANA  
BY TYPE OF ASSETS AT CURRENT PRICES**

(₹. in Lakh)

Sr. No.	Year	Buildings	Roads & Bridges	Other Construction	Plants & Machinery *	Transport Equipment	Total Gross Fixed Capital Formation
1	2004-05	578979 (39.9)	52267 (3.6)	225165 (15.5)	538315 (37.1)	57235 (3.9)	1451961 (100.0)
2	2005-06	687729 (41.4)	44995 (2.7)	169318 (10.2)	713646 (42.9)	47398 (2.8)	1663086 (100.0)
3	2006-07	756020 (37.3)	38459 (1.9)	445256 (22.0)	723163 (35.7)	63534 (3.1)	2026432 (100.0)
4	2007-08	928597 (35.1)	49604 (1.9)	448908 (16.9)	1145168 (43.3)	74065 (2.8)	2646342 (100.0)
5	2008-09	1305152 (41.2)	82927 (2.6)	453382 (14.3)	1251959 (39.6)	71800 (2.3)	3165220 (100.0)
6	2009-10(R)	1344024 (37.3)	129733 (3.6)	844540 (23.4)	1209486 (33.6)	74476 (2.1)	3602259 (100.0)
7	2010-11(R)	1423173 (33.4)	148789 (3.5)	592371 (13.9)	2006434 (47.1)	90792 (2.1)	4261559 (100.0)
8	2011-12(P)	1819300 (35.6)	253199 (5.0)	823616 (16.1)	2121948 (41.5)	91287 (1.8)	5109350 (100.0)

\*Items of other equipment are included under " plant &amp; machinery"

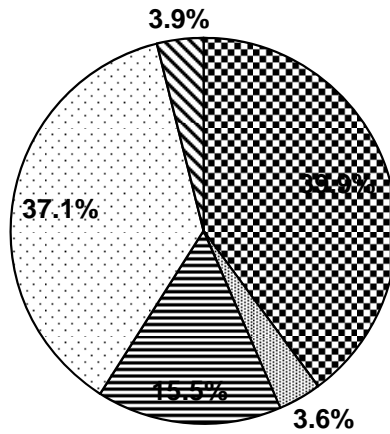
Note: Figures in brackets are percentage to total

R: Revised

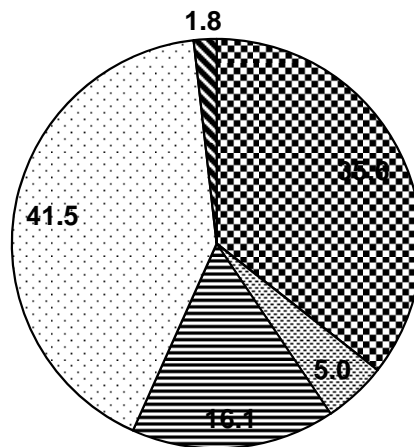
P: Provisional

## Composition of Gross Fixed Capital Formation in Haryana by type of Assets At Current Prices

2004-05



2011-12



- Buildings
- Roads & Bridges
- Other Construction
- Plants & Machinery
- Transport Equipment

**TABLE 4.6**

**ESTIMATES OF GROSS FIXED CAPITAL FORMATION IN HARYANA  
BY TYPE OF ASSETS AT CONSTANT (2004-05) PRICES**

(₹. in Lakh)

Sr. No.	Year	Buildings	Roads & Bridges	Other Construction	Plants & Machinery *	Transport Equipment	Total Gross Fixed Capital Formation
1	2004-05	578979 (39.9)	52267 (3.6)	225165 (15.5)	538315 (37.1)	57235 (3.9)	1451961 (100.0)
2	2005-06	670504 (41.6)	43306 (2.7)	163975 (10.2)	688889 (42.7)	46170 (2.8)	1612844 (100.0)
3	2006-07	681989 (37.0)	36421 (2.0)	407039 (22.0)	657951 (35.7)	60509 (3.3)	1843909 (100.0)
4	2007-08	754568 (33.8)	42614 (1.9)	366051 (16.4)	998151 (44.8)	69078 (3.1)	2230462 (100.0)
5	2008-09	955626 (38.7)	64035 (2.6)	332512 (13.4)	1055215 (42.7)	63373 (2.6)	2470761 (100.0)
6	2009-10(R)	914079 (34.4)	90469 (3.4)	583735 (21.9)	1009752 (37.9)	63764 (2.4)	2661799 (100.0)
7	2010-11(R)	865367 (28.7)	93226 (3.1)	366338 (12.2)	1608750 (53.5)	75340 (2.5)	3009021 (100.0)
8	2011-12(P)	963122 (29.4)	143212 (4.4)	456044 (13.9)	1638956 (50.1)	73265 (2.2)	3274599 (100.0)

\* Items of other equipment are included under " plant & machinery"

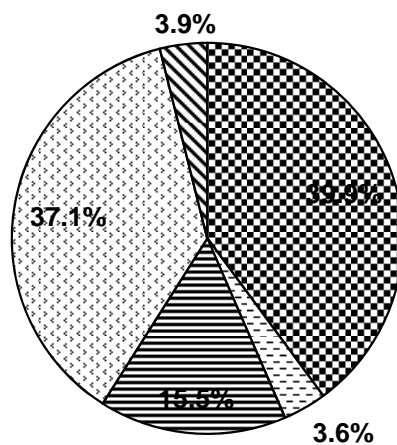
Note: Figures in bracket are percentage to total

R: Revised

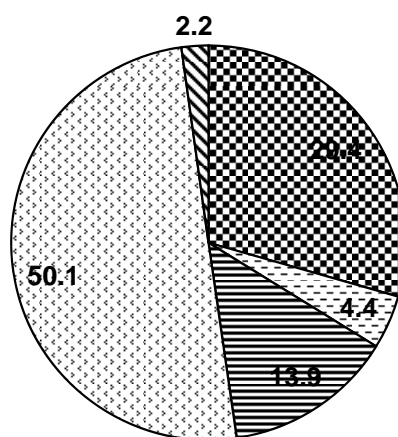
P: Provisional

## Composition of Gross Fixed Capital Formation in Haryana by type of Assets At Constant (2004-05)Prices

2004-05



2011-12



- Buildings
- Roads & Bridges
- Other Construction
- Plants & Machinery
- Transport Equipment

**TABLE 4.7**

**COMPOSITION OF GROSS FIXED CAPITAL FORMATION IN HARYANA  
BY INDUSTRY OF USE AT CURRENT PRICES**

Sr. No.	Industry	2004-05	2005-06	2006-07	2007-08	2008-09	2009-10(R)	2010-11(R)	2011-12(P)
1	Agriculture	7.8	7.8	8.2	9.3	9.2	10.1	10.4	12.0
2	Forestry	1.2	0.4	0.3	0.3	0.3	0.2	0.2	0.1
3	Fishing	0.0	0.0	0.0	0.0	0.0	0.0	0.0	0.0
4	Mining & Quarrying	0.3	0.3	0.3	0.2	0.2	0.1	0.0	0.0
5	Manufacturing	45.0	44.8	43.9	43.0	41.1	35.8	36.6	38.7
6	Electricity, Gas and Water Supply	8.0	9.5	12.1	11.6	14.2	13.0	16.5	13.3
7	Construction	2.4	2.2	2.0	2.6	2.2	2.8	2.2	2.1
8	Trade, Hotels & Restaurants	0.6	0.6	0.5	0.5	1.2	1.1	1.0	0.9
9	Transport, Storage & Communication	6.0	7.4	7.0	7.3	7.8	8.9	7.4	6.5
10	Banking & Insurance	1.3	1.0	0.8	0.9	0.5	0.8	0.8	0.9
11	Real Estate, Ownership of Dwellings and Business services (only Residential Buildings Part)	16.8	15.6	14.5	12.8	12.3	11.8	11.5	11.1
12	Public Administration	9.3	9.1	9.1	10.0	9.5	13.7	12.1	13.0
13	Other Services	1.3	1.3	1.3	1.5	1.5	1.7	1.3	1.4
<b>Total</b>		<b>100.0</b>	<b>100.0</b>	<b>100.0</b>	<b>100.0</b>	<b>100.0</b>	<b>100.0</b>	<b>100.0</b>	<b>100.0</b>

R: Revised

P: Provisional

**TABLE 4.8****COMPOSITION OF GROSS FIXED CAPITAL FORMATION IN HARYANA  
BY INDUSTRY OF USE AT CONSTANT (2004-05) PRICES**

<b>Sr. No.</b>	<b>Industry</b>	<b>2004-05</b>	<b>2005-06</b>	<b>2006-07</b>	<b>2007-08</b>	<b>2008-09</b>	<b>2009-10(R)</b>	<b>2010-11(R)</b>	<b>2011-12(P)</b>
1	Agriculture	7.8	7.7	8.3	9.1	8.7	9.0	8.3	8.9
2	Forestry	1.2	0.4	0.3	0.3	0.3	0.2	0.2	0.1
3	Fishing	0.0	0.0	0.0	0.0	0.0	0.0	0.0	0.0
4	Mining & Quarrying	0.3	0.3	0.3	0.2	0.2	0.1	0.0	0.0
5	Manufacturing	45.0	44.8	43.8	43.5	41.6	37.6	39.6	43.9
6	Electricity, Gas and Water Supply	8.0	9.5	12.2	11.8	15.2	12.6	17.5	13.6
7	Construction	2.4	2.3	2.1	2.5	2.1	2.7	1.8	1.9
8	Trade, Hotels & Restaurants	0.6	0.6	0.5	0.5	1.1	1.1	1.0	0.9
9	Transport, Storage & Communication	6.0	7.4	7.0	7.5	8.1	9.5	7.9	7.2
10	Banking & Insurance	1.3	1.0	0.8	1.0	0.5	0.9	0.9	1.0
11	Real Estate, Ownership of Dwellings and Business services (only Residential Buildings Part )	16.8	15.6	14.3	12.3	11.6	11.2	10.2	9.7
12	Public Administration	9.3	9.1	9.1	9.9	9.2	13.4	11.4	11.5
13	Other Services	1.3	1.3	1.3	1.4	1.4	1.7	1.2	1.3
<b>Total</b>		<b>100.0</b>	<b>100.0</b>	<b>100.0</b>	<b>100.0</b>	<b>100.0</b>	<b>100.0</b>	<b>100.0</b>	<b>100.0</b>

R: Revised

P: Provisional

**TABLE 4.9**

**PERCENTAGE INCREASE/DECREASE OVER THE PREVIOUS YEAR IN  
GROSS FIXED CAPITAL FORMATION IN HARYANA BY INDUSTRY OF USE  
AT CURRENT PRICES**

Sr. No.	Industry	2005-06	2006-07	2007-08	2008-09	2009-10(R)	2010-11(R)	2011-12(P)
1	Agriculture	15.0	28.3	47.8	18.0	25.3	21.4	38.8
2	Forestry	-60.5	-0.1	8.0	26.1	-23.9	-10.2	4.6
3	Fishing	98.0	-32.6	51.5	24.1	-1.6	-6.7	-23.9
4	Mining & Quarrying	3.3	3.4	6.3	0.4	-65.5	-95.3	-11.2
5	Manufacturing	14.1	19.5	27.8	14.3	-0.9	21.0	26.9
	5.1 Registered	17.8	23.0	39.1	18.2	-6.4	26.1	29.0
	5.2 Un-registered	9.4	14.5	11.0	7.0	10.1	11.9	22.9
6	Electricity, Gas and Water Supply	35.4	55.5	24.9	46.9	3.9	50.1	-3.4
7	Construction	5.4	6.9	70.6	3.2	43.1	-6.4	13.8
8	Trade, Hotels & Restaurants	7.8	3.9	33.6	189.2	6.6	2.6	8.9
	8.1 Trade	7.6	1.6	57.4	269.8	8.4	2.2	8.1
	8.2 Hotels & Restaurants	8.1	7.1	3.0	30.6	-3.6	5.0	13.7
9	Transport, Storage & Communication	41.3	14.0	37.6	27.3	29.9	-0.9	4.7
	9.1 Railways	541.7	7.3	122.2	-56.8	81.0	5.9	10.0
	9.2 Transport by Other means	-7.3	47.2	2.3	20.5	-17.1	26.1	4.0
	9.3 Storage	-10.2	85.9	34.1	-52.3	1253.2	75.4	-72.8
	9.4 Communication	22.6	2.2	15.9	116.1	29.7	-11.1	9.0
10	Banking & Insurance	-15.4	7.1	44.4	-35.4	83.3	22.2	23.4
11	Real Estate, Ownership of Dwellings and Business services (only Residential Buildings Part)	6.4	13.2	15.5	15.0	9.1	15.4	15.7
12	Public Administration	12.4	21.5	44.5	13.3	64.0	4.5	28.2
13	Other Services	13.6	28.3	42.3	23.0	33.3	-10.0	32.2
	<b>Total</b>	<b>14.5</b>	<b>21.8</b>	<b>30.6</b>	<b>19.6</b>	<b>13.8</b>	<b>18.3</b>	<b>19.9</b>

R: Revised  
P: Provisional

**TABLE 4.10**

**PERCENTAGE INCREASE/DECREASE OVER THE PREVIOUS YEAR IN  
GROSS FIXED CAPITAL FORMATION IN HARYANA BY INDUSTRY OF USE  
AT CONSTANT (2004-05) PRICES**

Sr. No.	Industry	2005-06	2006-07	2007-08	2008-09	2009-10(R)	2010-11(R)	2011-12(P)
1	<b>Agriculture</b>	9.9	22.9	33.1	5.2	12.1	3.7	17.2
2	<b>Forestry</b>	-61.6	-5.8	-3.3	13.5	-27.9	-19.8	-5.6
3	<b>Fishing</b>	92.3	-36.3	35.9	12.7	-5.3	-18.3	-30.5
4	<b>Mining &amp; Quarrying</b>	1.0	-3.9	-3.8	-9.6	-64.0	-95.5	-21.5
5	<b>Manufacturing</b>	10.7	11.7	20.3	5.8	-2.6	19.1	20.6
	5.1 Registered	13.9	15.4	32.6	9.6	-6.1	26.2	24.5
	5.2 Un-registered	6.5	6.5	2.0	-1.4	5.1	5.5	11.7
6	<b>Electricity, Gas and Water Supply</b>	31.2	47.0	17.2	42.1	-10.3	56.4	-15.3
7	<b>Construction</b>	3.1	0.3	52.7	-7.0	35.5	-17.1	5.2
8	<b>Trade, Hotels &amp; Restaurants</b>	5.1	-1.7	28.7	149.5	2.9	-3.4	0.8
	8.1 Trade	4.8	-2.2	55.4	208.4	4.9	-3.6	0.6
	8.2 Hotels & Restaurants	5.6	-1.1	-6.9	18.0	-9.0	-1.9	2.6
9	<b>Transport, Storage &amp; Communication</b>	37.1	8.1	29.0	20.5	25.7	-5.9	-0.8
	9.1 Railways	523.2	-0.1	106.5	-59.6	74.1	0.4	2.0
	9.2 Transport by Other means	-9.8	43.3	-0.6	14.1	-19.6	22.2	-1.5
	9.3 Storage	-12.5	62.7	29.1	-55.0	1160.0	60.9	-76.6
	9.4 Communication	18.7	-3.7	8.4	104.3	27.5	-15.8	3.6
10	<b>Banking &amp; Insurance</b>	-17.8	0.3	37.5	-40.8	88.0	13.3	16.0
11	<b>Real Estate, Ownership of Dwellings and Business services (only Residential Buildings Part)</b>	3.6	4.8	3.9	4.2	4.1	2.6	4.0
12	<b>Public Administration</b>	9.1	14.7	30.4	3.4	57.5	-4.1	9.7
13	<b>Other Services</b>	10.6	19.6	28.7	11.6	28.1	-18.5	19.5
	<b>Total</b>	<b>11.1</b>	<b>14.3</b>	<b>21.0</b>	<b>10.8</b>	<b>7.7</b>	<b>13.0</b>	<b>8.8</b>

R: Revised

P: Provisional



**TABLE 4.11**

**ESTIMATES OF GROSS FIXED CAPITAL FORMATION IN HARYANA BY  
INDUSTRY OF USE FOR 2004-05 AT CURRENT PRICES**

							₹. in Lakh)	
Sr. No.	Industry	Buildings	Roads & Bridges	Other Construction	Plant & Machinery	Transport Equipments	Other Equipments	Total G.F.C.F.
1	Agriculture	5568	8258	64361	32375	96	2403	113061
2	Forestry	94	0	16767	141	53	105	17160
3	Fishing	0	0	342	21	0	28	391
4	Mining & Quarrying	9	0	0	349	92	4335	4785
5	<b>Manufacturing</b>	<b>244740</b>	<b>0</b>	<b>0</b>	<b>382168</b>	<b>13911</b>	<b>12031</b>	<b>652850</b>
	I) Registered	44794	0	0	320866	734	0	366394
	ii) Un-registered	199946	0	0	61302	13177	12031	286456
6	Electricity, Gas and Water Supply	39597	0	39309	23365	100	14319	116690
7	Construction	708	0	34429	226	22	129	35514
8	<b>Trade, Hotels &amp; Restaurants</b>	<b>2688</b>	<b>237</b>	<b>373</b>	<b>136</b>	<b>3208</b>	<b>1979</b>	<b>8621</b>
	I) Trade	348	237	373	59	3135	818	4970
	ii) Hotels & Restaurants	2340	0	0	77	73	1161	3651
9	<b>Transport, Storage &amp; Communication</b>	<b>1445</b>	<b>0</b>	<b>21217</b>	<b>35725</b>	<b>25419</b>	<b>3555</b>	<b>87361</b>
	I) Railways	190	0	4062	660	0	0	4912
	ii) Transport by Other means	1029	0	10	105	25388	3456	29988
	iii) Storage	226	0	27	177	31	99	560
	iv) Communication	0	0	17118	34783	0	0	51901
10	Banking & Insurance	2415	0	109	4146	12253	0	18923
11	Real Estate, Ownership of Dwellings and Business services (only Residential Buildings Part )	243444	0	0	0	0	72	243516
12	Public Administration	30441	43216	46116	3741	1735	9502	134751
13	Other Services	7830	556	2142	3541	346	3923	18338
<b>Total</b>		<b>578979</b>	<b>52267</b>	<b>225165</b>	<b>485934</b>	<b>57235</b>	<b>52381</b>	<b>1451961</b>

**TABLE 4.12**

**ESTIMATES OF GROSS FIXED CAPITAL FORMATION IN HARYANA BY  
INDUSTRY OF USE FOR 2005-06 AT CURRENT PRICES**

								(₹. in Lakh)
Sr. No.	Industry	Buildings	Roads & Bridges	Other Construction	Plant & Machinery	Transport Equipments	Other Equipments	Total G.F.C.F.
1	Agriculture	38160	5980	57615	25447	282	2582	130066
2	Forestry	38	0	6553	41	9	143	6784
3	Fishing	0	0	706	41	0	27	774
4	Mining & Quarrying	42	151	27	112	21	4591	4944
5	<b>Manufacturing</b>	<b>271921</b>	<b>177</b>	<b>759</b>	<b>418078</b>	<b>15281</b>	<b>38739</b>	<b>744955</b>
	I) Registered	53180	177	759	351014	865	25577	431572
	ii) Un-registered	218741	0	0	67064	14416	13162	313383
6	Electricity, Gas and Water Supply	19254	0	34396	87980	159	16213	158002
7	Construction	2668	15	2125	97	101	32424	37430
8	<b>Trade, Hotels &amp; Restaurants</b>	<b>2878</b>	<b>24</b>	<b>1099</b>	<b>162</b>	<b>3329</b>	<b>1803</b>	<b>9295</b>
	I) Trade	191	24	1099	90	3329	616	5349
	ii) Hotels & Restaurants	2687	0	0	72	0	1187	3946
9	<b>Transport, Storage &amp; Communication</b>	<b>19911</b>	<b>0</b>	<b>24401</b>	<b>52632</b>	<b>26432</b>	<b>69</b>	<b>123445</b>
	I) Railways	17966	0	0	13554	0	0	31520
	ii) Transport by Other means	1140	0	17	252	26385	0	27794
	iii) Storage	234	0	18	158	24	69	503
	iv) Communication	571	0	24366	38668	23	0	63628
10	Banking & Insurance	1487	0	2765	6646	317	4791	16006
11	Real Estate, Ownership of Dwellings and Business services (only Residential Buildings Part )	259082	0	0	5	0	2	259089
12	Public Administration	62762	38637	38510	5714	1210	4632	151465
13	Other Services	9526	11	362	5569	257	5106	20831
<b>Total</b>		<b>687729</b>	<b>44995</b>	<b>169318</b>	<b>602524</b>	<b>47398</b>	<b>111122</b>	<b>1663086</b>

**TABLE 4.13**

**ESTIMATES OF GROSS FIXED CAPITAL FORMATION IN HARYANA BY  
INDUSTRY OF USE FOR 2005-06 AT CONSTANT (2004-05) PRICES**

							₹. in Lakh)	
Sr. No.	Industry	Buildings	Roads & Bridges	Other Construction	Plant & Machinery	Transport Equipments	Other Equipments	Total G.F.C.F.
1	Agriculture	37164	5756	55420	25552	294	107	124293
2	Forestry	37	0	6368	40	9	140	6594
3	Fishing	0	0	686	40	0	26	752
4	Mining & Quarrying	41	145	26	108	20	4492	4832
5	<b>Manufacturing</b>	<b>265290</b>	<b>170</b>	<b>738</b>	<b>403551</b>	<b>14879</b>	<b>37905</b>	<b>722533</b>
	I) Registered	51884	170	738	338817	842	25026	417477
	ii) Un-registered	213406	0	0	64734	14037	12879	305056
6	Electricity, Gas and Water Supply	18784	0	33427	84923	155	15864	153153
7	Construction	2603	14	2065	94	99	31726	36601
8	<b>Trade, Hotels &amp; Restaurants</b>	<b>2809</b>	<b>23</b>	<b>1068</b>	<b>157</b>	<b>3241</b>	<b>1765</b>	<b>9063</b>
	I) Trade	187	23	1068	87	3241	603	5209
	ii) Hotels & Restaurants	2622	0	0	70	0	1162	3854
9	<b>Transport, Storage &amp; Communication</b>	<b>19426</b>	<b>0</b>	<b>23714</b>	<b>50804</b>	<b>25736</b>	<b>68</b>	<b>119748</b>
	I) Railways	17528	0	0	13083	0	0	30611
	ii) Transport by Other means	1112	0	17	243	25691	0	27063
	iii) Storage	229	0	17	153	23	68	490
	iv) Communication	557	0	23680	37325	22	0	61584
10	Banking & Insurance	1451	0	2687	6415	309	4687	15549
11	Real Estate, Ownership of Dwellings and Business services (only Residential Buildings Part )	252374	0	0	5	0	2	252381
12	Public Administration	61232	37187	37425	5515	1178	4532	147069
13	Other Services	9293	11	351	5375	250	4996	20276
<b>Total</b>		<b>670504</b>	<b>43306</b>	<b>163975</b>	<b>582579</b>	<b>46170</b>	<b>106310</b>	<b>1612844</b>

**TABLE 4.14**

**ESTIMATES OF GROSS FIXED CAPITAL FORMATION IN HARYANA BY  
INDUSTRY OF USE FOR 2006-07 AT CURRENT PRICES**

								₹. in Lakh)
Sr. No.	Industry	Buildings	Roads & Bridges	Other Construction	Plant & Machinery	Transport Equipments	Other Equipments	Total G.F.C.F.
1	Agriculture	36090	724	99338	29416	310	1013	166891
2	Forestry	65	0	6294	77	16	324	6776
3	Fishing	0	0	459	20	0	43	522
4	Mining & Quarrying	43	156	28	116	21	4748	5112
5	<b>Manufacturing</b>	<b>312734</b>	<b>177</b>	<b>1296</b>	<b>514442</b>	<b>18628</b>	<b>42603</b>	<b>889880</b>
	I) Registered	62202	177	1296	437631	2117	27528	530951
	ii) Un-registered	250532	0	0	76811	16511	15075	358929
6	Electricity, Gas and Water Supply	5809	0	212488	26629	355	402	245683
7	Construction	7684	5069	24770	132	10	2343	40008
8	<b>Trade, Hotels &amp; Restaurants</b>	<b>4515</b>	<b>175</b>	<b>81</b>	<b>246</b>	<b>3568</b>	<b>1077</b>	<b>9662</b>
	I) Trade	835	175	81	163	3568	614	5436
	ii) Hotels & Restaurants	3680	0	0	83	0	463	4226
9	<b>Transport, Storage &amp; Communication</b>	<b>22402</b>	<b>0</b>	<b>24143</b>	<b>56443</b>	<b>37589</b>	<b>132</b>	<b>140709</b>
	I) Railways	19278	0	0	14543	0	0	33821
	ii) Transport by Other means	2076	0	0	1283	37545	0	40904
	iii) Storage	599	0	20	159	25	132	935
	iv) Communication	449	0	24123	40458	19	0	65049
10	Banking & Insurance	1950	0	3610	5716	346	5518	17140
11	Real Estate, Ownership of Dwellings and Business services (only Residential Buildings Part )	293304	0	0	7	0	2	293313
12	Public Administration	63222	31838	69757	5775	2311	11111	184014
13	Other Services	8202	320	2992	9732	380	5096	26722
<b>Total</b>		<b>756020</b>	<b>38459</b>	<b>445256</b>	<b>648751</b>	<b>63534</b>	<b>74412</b>	<b>2026432</b>

**TABLE 4.15**

**ESTIMATES OF GROSS FIXED CAPITAL FORMATION IN HARYANA BY  
INDUSTRY OF USE FOR 2006-07 AT CONSTANT (2004-05) PRICES**

							₹. in Lakh)	
Sr. No.	Industry	Buildings	Roads & Bridges	Other Construction	Plant & Machinery	Transport Equipments	Other Equipments	Total G.F.C.F.
1	Agriculture	33154	686	89682	28019	295	918	152754
2	Forestry	59	0	5774	70	15	294	6212
3	Fishing	0	0	422	18	0	39	479
4	Mining & Quarrying	39	148	26	106	20	4305	4644
5	<b>Manufacturing</b>	<b>281743</b>	<b>168</b>	<b>1189</b>	<b>467251</b>	<b>17741</b>	<b>38624</b>	<b>806716</b>
	I) Registered	56038	168	1189	397486	2016	24957	481854
	ii) Un-registered	225705	0	0	69765	15725	13667	324862
6	Electricity, Gas and Water Supply	5233	0	194943	24186	338	364	225064
7	Construction	6922	4800	22725	120	10	2124	36701
8	<b>Trade, Hotels &amp; Restaurants</b>	<b>4068</b>	<b>166</b>	<b>74</b>	<b>223</b>	<b>3398</b>	<b>976</b>	<b>8905</b>
	I) Trade	753	166	74	148	3398	556	5095
	ii) Hotels & Restaurants	3315	0	0	75	0	420	3810
9	<b>Transport, Storage &amp; Communication</b>	<b>20184</b>	<b>0</b>	<b>22150</b>	<b>51265</b>	<b>35799</b>	<b>69</b>	<b>129467</b>
	I) Railways	17368	0	0	13209	0	0	30577
	ii) Transport by Other means	1871	0	0	1165	35757	0	38793
	iii) Storage	540	0	19	145	24	69	797
	iv) Communication	405	0	22131	36746	18	0	59300
10	Banking & Insurance	1757	0	3312	5192	330	5003	15594
11	Real Estate, Ownership of Dwellings and Business services (only Residential Buildings Part )	264484	0	0	6	0	2	264492
12	Public Administration	56957	30150	63997	5245	2201	10073	168623
13	Other Services	7389	303	2745	8839	362	4620	24258
<b>Total</b>		<b>681989</b>	<b>36421</b>	<b>407039</b>	<b>590540</b>	<b>60509</b>	<b>67411</b>	<b>1843909</b>

**TABLE 4.16**

**ESTIMATES OF GROSS FIXED CAPITAL FORMATION IN HARYANA BY  
INDUSTRY OF USE FOR 2007-08 AT CURRENT PRICES**

								₹. in Lakh)
Sr. No.	Industry	Buildings	Roads & Bridges	Other Construction	Plant & Machinery	Transport Equipments	Other Equipments	Total G.F.C.F.
1	Agriculture	63277	9553	138061	33203	208	2414	246716
2	Forestry	47	0	6958	79	34	198	7316
3	Fishing	0	0	685	57	0	49	791
4	Mining & Quarrying	55	118	35	145	132	4948	5433
5	<b>Manufacturing</b>	<b>369133</b>	<b>0</b>	<b>131</b>	<b>687096</b>	<b>19797</b>	<b>60952</b>	<b>1137109</b>
	I) Registered	91008	0	131	601825	1468	44217	738649
	ii) Un-registered	278125	0	0	85271	18329	16735	398460
6	Electricity, Gas and Water Supply	7863	0	80232	217885	236	659	306875
7	Construction	1271	0	61153	1230	319	4299	68272
8	<b>Trade, Hotels &amp; Restaurants</b>	<b>4605</b>	<b>151</b>	<b>5</b>	<b>1195</b>	<b>5486</b>	<b>1466</b>	<b>12908</b>
	I) Trade	868	151	5	1071	5486	975	8556
	ii) Hotels & Restaurants	3737	0	0	124	0	491	4352
9	<b>Transport, Storage &amp; Communication</b>	<b>45750</b>	<b>0</b>	<b>30858</b>	<b>78555</b>	<b>38314</b>	<b>145</b>	<b>193622</b>
	I) Railways	42844	0	0	32321	0	0	75165
	ii) Transport by Other means	2008	0	0	1558	38269	0	41835
	iii) Storage	898	0	110	56	45	145	1254
	iv) Communication	0	0	30748	44620	0	0	75368
10	Banking & Insurance	1652	0	26	10972	5243	6849	24742
11	Real Estate, Ownership of Dwellings and Business services (only Residential Buildings Part )	338653	0	0	5	0	1	338659
12	Public Administration	70023	39756	128939	7874	3905	15388	265885
13	Other Services	26268	26	1825	3915	391	5589	38014
<b>Total</b>		<b>928597</b>	<b>49604</b>	<b>448908</b>	<b>1042211</b>	<b>74065</b>	<b>102957</b>	<b>2646342</b>

**TABLE 4.17**

**ESTIMATES OF GROSS FIXED CAPITAL FORMATION IN HARYANA BY  
INDUSTRY OF USE FOR 2007-08 AT CONSTANT (2004-05) PRICES**

							₹. in Lakh)	
Sr. No.	Industry	Buildings	Roads & Bridges	Other Construction	Plant & Machinery	Transport Equipments	Other Equipments	Total G.F.C.F.
1	Agriculture	51972	8207	111259	29718	193	1972	203321
2	Forestry	38	0	5704	69	32	162	6005
3	Fishing	0	0	561	50	0	40	651
4	Mining & Quarrying	45	101	29	127	123	4042	4467
5	<b>Manufacturing</b>	<b>299865</b>	<b>0</b>	<b>107</b>	<b>602188</b>	<b>18398</b>	<b>49797</b>	<b>970355</b>
	I) Registered	73931	0	107	527454	1364	36125	638981
	ii) Un-registered	225934	0	0	74734	17034	13672	331374
6	Electricity, Gas and Water Supply	6387	0	65764	190959	219	538	263867
7	Construction	1032	0	50125	1077	296	3512	56042
8	<b>Trade, Hotels &amp; Restaurants</b>	<b>3741</b>	<b>130</b>	<b>4</b>	<b>1048</b>	<b>5343</b>	<b>1198</b>	<b>11464</b>
	I) Trade	705	130	4	939	5343	797	7918
	ii) Hotels & Restaurants	3036	0	0	109	0	401	3546
9	<b>Transport, Storage &amp; Communication</b>	<b>37164</b>	<b>0</b>	<b>25293</b>	<b>68847</b>	<b>35608</b>	<b>119</b>	<b>167031</b>
	I) Railways	34804	0	0	28327	0	0	63131
	ii) Transport by Other means	1631	0	0	1365	35566	0	38562
	iii) Storage	729	0	90	49	42	119	1029
	iv) Communication	0	0	25203	39106	0	0	64309
10	Banking & Insurance	1342	0	21	9616	4873	5596	21448
11	Real Estate, Ownership of Dwellings and Business services (only Residential Buildings Part )	274761	0	0	4	0	1	274766
12	Public Administration	56883	34154	105688	6901	3629	12572	219827
13	Other Services	21338	22	1496	3431	364	4567	31218
<b>Total</b>		<b>754568</b>	<b>42614</b>	<b>366051</b>	<b>914035</b>	<b>69078</b>	<b>84116</b>	<b>2230462</b>

**TABLE 4.18**

**ESTIMATES OF GROSS FIXED CAPITAL FORMATION IN HARYANA BY  
INDUSTRY OF USE FOR 2008-09 AT CURRENT PRICES**

								₹. in Lakh)
Sr. No.	Industry	Buildings	Roads & Bridges	Other Construction	Plant & Machinery	Transport Equipments	Other Equipments	Total G.F.C.F.
1	Agriculture	107862	8609	132610	38124	231	3795	291231
2	Forestry	2	0	9080	44	18	80	9224
3	Fishing	247	0	559	98	0	78	982
4	Mining & Quarrying	49	139	33	133	250	4849	5453
5	<b>Manufacturing</b>	<b>655424</b>	<b>868</b>	<b>88</b>	<b>594539</b>	<b>21369</b>	<b>27546</b>	<b>1299834</b>
	I) Registered	357704	868	88	503261	1748	9632	873301
	ii) Un-registered	297720	0	0	91278	19621	17914	426533
6	Electricity, Gas and Water Supply	8497	0	68554	373018	236	390	450695
7	Construction	2652	0	66734	788	109	190	70473
8	<b>Trade, Hotels &amp; Restaurants</b>	<b>20468</b>	<b>0</b>	<b>308</b>	<b>5101</b>	<b>4335</b>	<b>7112</b>	<b>37324</b>
	I) Trade	15554	0	308	4996	4313	6468	31639
	ii) Hotels & Restaurants	4914	0	0	105	22	644	5685
9	<b>Transport, Storage &amp; Communication</b>	<b>20839</b>	<b>0</b>	<b>64891</b>	<b>118983</b>	<b>41652</b>	<b>49</b>	<b>246414</b>
	I) Railways	18530	0	0	13978	0	0	32508
	ii) Transport by Other means	2000	0	57	6740	41625	0	50422
	iii) Storage	309	0	49	164	27	49	598
	iv) Communication	0	0	64785	98101	0	0	162886
10	Banking & Insurance	1084	0	201	8224	177	6286	15972
11	Real Estate, Ownership of Dwellings and Business services (only Residential Buildings Part )	389551	0	0	15	0	1	389567
12	Public Administration	69619	73247	102158	21486	3283	31516	301309
13	Other Services	28858	64	8166	4298	140	5216	46742
<b>Total</b>		<b>1305152</b>	<b>82927</b>	<b>453382</b>	<b>1164851</b>	<b>71800</b>	<b>87108</b>	<b>3165220</b>



**TABLE 4.19**

**ESTIMATES OF GROSS FIXED CAPITAL FORMATION IN HARYANA BY  
INDUSTRY OF USE FOR 2008-09 AT CONSTANT (2004-05) PRICES**

		₹. in Lakh)						
Sr. No.	Industry	Buildings	Roads & Bridges	Other Construction	Plant & Machinery	Transport Equipments	Other Equipments	Total G.F.C.F.
1	Agriculture	76672	6648	95781	31897	204	2770	213972
2	Forestry	1	0	6701	38	16	58	6814
3	Fishing	181	0	413	83	0	57	734
4	Mining & Quarrying	36	107	24	113	221	3539	4040
5	<b>Manufacturing</b>	<b>480869</b>	<b>670</b>	<b>65</b>	<b>506423</b>	<b>18860</b>	<b>20106</b>	<b>1026993</b>
	I) Registered	262439	670	65	428673	1542	7030	700419
	ii) Un-registered	218430	0	0	77750	17318	13076	326574
6	Electricity, Gas and Water Supply	6234	0	50593	317733	208	285	375053
7	Construction	1946	0	49250	671	97	138	52102
8	<b>Trade, Hotels &amp; Restaurants</b>	<b>15016</b>	<b>0</b>	<b>227</b>	<b>4346</b>	<b>3826</b>	<b>5191</b>	<b>28606</b>
	I) Trade	11411	0	227	4256	3807	4721	24422
	ii) Hotels & Restaurants	3605	0	0	90	19	470	4184
9	<b>Transport, Storage &amp; Communication</b>	<b>15289</b>	<b>0</b>	<b>47890</b>	<b>101349</b>	<b>36763</b>	<b>36</b>	<b>201327</b>
	I) Railways	13595	0	0	11906	0	0	25501
	ii) Transport by Other means	1467	0	42	5741	36739	0	43989
	iii) Storage	227	0	36	140	24	36	463
	iv) Communication	0	0	47812	83562	0	0	131374
10	Banking & Insurance	795	0	148	7005	156	4589	12693
11	Real Estate, Ownership of Dwellings and Business services (only Residential Buildings Part )	286336	0	0	13	0	1	286350
12	Public Administration	51078	56562	75393	18302	2898	23004	227237
13	Other Services	21173	49	6027	3661	124	3807	34841
<b>Total</b>		<b>955626</b>	<b>64036</b>	<b>332512</b>	<b>991634</b>	<b>63373</b>	<b>63581</b>	<b>2470762</b>

**TABLE 4.20**

**ESTIMATES OF GROSS FIXED CAPITAL FORMATION IN HARYANA BY  
INDUSTRY OF USE FOR 2009-10 ( R ) AT CURRENT PRICES**

								₹. in Lakh)
Sr. No.	Industry	Buildings	Roads & Bridges	Other Construction	Plant & Machinery	Transport Equipments	Other Equipments	Total G.F.C.F.
1	Agriculture	169072	11216	140295	40433	220	3725	364961
2	Forestry	0	0	6920	27	4	71	7022
3	Fishing	8	0	778	101	0	79	966
4	Mining & Quarrying	0	0	9	11	30	1829	1879
5	<b>Manufacturing</b>	<b>525664</b>	<b>0</b>	<b>0</b>	<b>674921</b>	<b>23150</b>	<b>63881</b>	<b>1287616</b>
	I) Registered	197752	0	0	574386	1540	44150	817828
	ii) Un-registered	327912	0	0	100535	21610	19731	469788
6	Electricity, Gas and Water Supply	8232	0	393968	65046	409	580	468235
7	Construction	286	0	99238	1122	23	212	100881
8	<b>Trade, Hotels &amp; Restaurants</b>	<b>22443</b>	<b>0</b>	<b>479</b>	<b>4568</b>	<b>4566</b>	<b>7727</b>	<b>39783</b>
	I) Trade	17544	0	479	4488	4544	7250	34305
	ii) Hotels & Restaurants	4899	0	0	80	22	477	5478
9	<b>Transport, Storage &amp; Communication</b>	<b>40445</b>	<b>0</b>	<b>77580</b>	<b>161813</b>	<b>38227</b>	<b>1940</b>	<b>320005</b>
	I) Railways	33545	0	0	25306	0	0	58851
	ii) Transport by Other means	2225	0	15	1428	38120	0	41788
	iii) Storage	4675	0	758	612	107	1940	8092
	iv) Communication	0	0	76807	134467	0	0	211274
10	Banking & Insurance	1227	0	233	17955	471	9388	29274
11	Real Estate, Ownership of Dwellings and Business services (only Residential Buildings Part )	425146	0	0	16	0	2	425164
12	Public Administration	115783	116582	114919	43609	6735	96525	494153
13	Other Services	35718	1935	10121	6843	641	7062	62320
<b>Total</b>		<b>1344024</b>	<b>129733</b>	<b>844540</b>	<b>1016465</b>	<b>74476</b>	<b>193021</b>	<b>3602259</b>

R: Revised

**TABLE 4.21**

**ESTIMATES OF GROSS FIXED CAPITAL FORMATION IN HARYANA BY  
INDUSTRY OF USE FOR 2009-10 ( R ) AT CONSTANT (2004-05) PRICES**

								₹. in Lakh)
Sr. No.	Industry	Buildings	Roads & Bridges	Other Construction	Plant & Machinery	Transport Equipments	Other Equipments	Total G.F.C.F.
1	Agriculture	103137	7821	92287	33557	189	2877	239868
2	Forestry	0	0	4829	23	3	55	4910
3	Fishing	5	0	543	86	0	61	695
4	Mining & Quarrying	0	0	6	9	26	1412	1453
5	<b>Manufacturing</b>	<b>359552</b>	<b>0</b>	<b>0</b>	<b>571967</b>	<b>19821</b>	<b>49328</b>	<b>1000668</b>
	I) Registered	135262	0	0	486768	1319	34092	657441
	ii) Un-registered	224290	0	0	85199	18502	15236	343227
6	Electricity, Gas and Water Supply	5630	0	274925	55124	350	448	336477
7	Construction	196	0	69252	951	19	163	70581
8	<b>Trade, Hotels &amp; Restaurants</b>	<b>15351</b>	<b>0</b>	<b>334</b>	<b>3871</b>	<b>3910</b>	<b>5967</b>	<b>29433</b>
	I) Trade	12000	0	334	3803	3891	5598	25626
	ii) Hotels & Restaurants	3351	0	0	68	19	369	3807
9	<b>Transport, Storage &amp; Communication</b>	<b>27665</b>	<b>0</b>	<b>54138</b>	<b>137129</b>	<b>32728</b>	<b>1498</b>	<b>253158</b>
	I) Railways	22945	0	0	21446	0	0	44391
	ii) Transport by Other means	1522	0	10	1210	32637	0	35379
	iii) Storage	3198	0	529	518	91	1498	5834
	iv) Communication	0	0	53599	113955	0	0	167554
10	Banking & Insurance	839	0	163	15215	403	7249	23869
11	Real Estate, Ownership of Dwellings and Business services (only Residential Buildings Part )	298078	0	0	14	0	2	298094
12	Public Administration	79195	81298	80195	36957	5766	74537	357948
13	Other Services	24431	1350	7063	5799	549	5453	44645
<b>Total</b>		<b>914079</b>	<b>90469</b>	<b>583735</b>	<b>860702</b>	<b>63764</b>	<b>149050</b>	<b>2661799</b>

R: Revised

**TABLE 4.22**

**ESTIMATES OF GROSS FIXED CAPITAL FORMATION IN HARYANA BY  
INDUSTRY OF USE FOR 2010-11 (R ) AT CURRENT PRICES**

								₹ in Lakh)
S. No.	Industry	Buildings	Roads & Bridges	Other Construction	Plant & Machinery	Transport Equipments	Other Equipments	Total G.F.C.F.
1	Agriculture	259791	3583	74229	45780	61	59484	442928
2	Forestry	52	0	5998	126	14	117	6307
3	Fishing	39	0	764	18	0	80	901
4	Mining & Quarrying	0	0	0	7	10	72	89
5	<b>Manufacturing</b>	<b>395598</b>	<b>0</b>	<b>41698</b>	<b>1010051</b>	<b>26950</b>	<b>83211</b>	<b>1557508</b>
	I) Registered	28562	0	41698	897522	2761	61126	1031669
	ii) Un-registered	367036	0	0	112529	24189	22085	525839
6	Electricity, Gas and Water Supply	63914	0	194885	442541	1171	341	702852
7	Construction	284	0	93304	473	60	278	94399
8	<b>Trade, Hotels &amp; Restaurants</b>	<b>22375</b>	<b>0</b>	<b>479</b>	<b>4747</b>	<b>4963</b>	<b>8247</b>	<b>40811</b>
	I) Trade	17849	0	479	4449	4927	7353	35057
	ii) Hotels & Restaurants	4526	0	0	298	36	894	5754
9	<b>Transport, Storage &amp; Communication</b>	<b>47270</b>	<b>0</b>	<b>67116</b>	<b>148471</b>	<b>49156</b>	<b>5047</b>	<b>317060</b>
	I) Railways	36140	0	0	26171	0	0	62311
	ii) Transport by Other means	2480	0	178	952	49086	0	52696
	iii) Storage	8650	0	4	421	70	5047	14192
	iv) Communication	0	0	66934	120927	0	0	187861
10	Banking & Insurance	2795	0	474	16902	557	15055	35783
11	Real Estate, Ownership of Dwellings and Business services (only Residential Buildings Part)	490495	0	0	15	0	0	490510
12	Public Administration	107878	140883	105251	43449	7092	111778	516331
13	Other Services	32682	4323	8173	3646	758	6498	56080
<b>Total</b>		<b>1423173</b>	<b>148789</b>	<b>592371</b>	<b>1716226</b>	<b>90792</b>	<b>290208</b>	<b>4261559</b>

R: Revised

**TABLE 4.23**

**ESTIMATES OF GROSS FIXED CAPITAL FORMATION IN HARYANA BY  
INDUSTRY OF USE FOR 2010-11 (R) AT CONSTANT (2004-05) PRICES**

								₹ in Lakh)
S. No.	Industry	Buildings	Roads & Bridges	Other Construction	Plant & Machinery	Transport Equipments	Other Equipments	Total G.F.C.F.
1	Agriculture	132956	2245	45905	36939	51	30655	248751
2	Forestry	32	0	3709	104	12	83	3940
3	Fishing	24	0	472	15	0	57	568
4	Mining & Quarrying	0	0	0	6	8	51	65
5	<b>Manufacturing</b>	<b>251651</b>	<b>0</b>	<b>25788</b>	<b>832689</b>	<b>22402</b>	<b>59141</b>	<b>1191671</b>
	I) Registered	18168	0	25788	739920	2295	43444	829615
	ii) Un-registered	233483	0	0	92769	20107	15697	362056
6	Electricity, Gas and Water Supply	39846	0	120523	364832	973	242	526416
7	Construction	181	0	57702	390	50	197	58520
8	<b>Trade, Hotels &amp; Restaurants</b>	<b>14176</b>	<b>0</b>	<b>296</b>	<b>3968</b>	<b>4126</b>	<b>5861</b>	<b>28427</b>
	I) Trade	11354	0	296	3722	4096	5226	24694
	ii) Hotels & Restaurants	2822	0	0	246	30	635	3733
9	<b>Transport, Storage &amp; Communication</b>	<b>29929</b>	<b>0</b>	<b>41506</b>	<b>122400</b>	<b>40861</b>	<b>3587</b>	<b>238283</b>
	I) Railways	22990	0	0	21575	0	0	44565
	ii) Transport by Other means	1546	0	110	785	40803	0	43244
	iii) Storage	5393	0	2	347	58	3587	9387
	iv) Communication	0	0	41394	99693	0	0	141087
10	Banking & Insurance	1778	0	293	13934	332	10700	27037
11	Real Estate, Ownership of Dwellings and Business services (only Residential Buildings Part)	305794	0	0	12	0	0	305806
12	Public Administration	68625	88272	65090	35819	5895	79444	343145
13	Other Services	20375	2709	5054	3006	630	4618	36392
<b>Total</b>		<b>865367</b>	<b>93226</b>	<b>366338</b>	<b>1414114</b>	<b>75340</b>	<b>194636</b>	<b>3009021</b>

R: Revised

**TABLE 4.24**

**ESTIMATES OF GROSS FIXED CAPITAL FORMATION IN HARYANA BY  
INDUSTRY OF USE AT CURRENT PRICES 2011-12(P)**

							(₹ in Lakh)	
S. No.	Industry	Buildings	Roads & Bridges	Other Construction	Plant & Machinery	Transport Equipments	Other Equipments	Total G.F.C.F.
1	Agriculture	409594	4019	88720	51313	86	60986	614718
2	Forestry	0	0	6147	148	31	269	6595
3	Fishing	0	0	568	30	0	88	686
4	Mining & Quarrying	0	0	0	5	0	74	79
5	<b>Manufacturing</b>	<b>489781</b>	<b>0</b>	<b>37977</b>	<b>1310818</b>	<b>33306</b>	<b>105027</b>	<b>1976909</b>
	I) Registered	38779	0	37977	1172545	3584	77889	1330774
	ii) Un-registered	451002	0	0	138273	29722	27138	646135
6	<b>Electricity, Gas and Water Supply</b>	<b>45850</b>	<b>-9</b>	<b>342110</b>	<b>281000</b>	<b>-1517</b>	<b>11333</b>	<b>678767</b>
7	<b>Construction</b>	11104	11748	63869	209	15	20527	<b>107472</b>
8	<b>Trade, Hotels &amp; Restaurants</b>	<b>23223</b>	<b>0</b>	<b>798</b>	<b>6004</b>	<b>7255</b>	<b>7171</b>	<b>44451</b>
	I) Trade	17383	0	798	5900	6669	7161	37911
	ii) Hotels & Restaurants	5840	0	0	104	586	10	6540
9	<b>Transport, Storage &amp; Communication</b>	<b>45582</b>	<b>0</b>	<b>71300</b>	<b>163290</b>	<b>47599</b>	<b>4228</b>	<b>331999</b>
	I) Railways	39069	0	0	29473	0	0	68542
	ii) Transport by Other means	3001	0	133	155	47590	3946	54825
	iii) Storage	3512	0	21	40	9	282	3864
	iv) Communication	0	0	71146	133622	0	0	204768
10	<b>Banking &amp; Insurance</b>	<b>3432</b>	<b>0</b>	<b>585</b>	<b>20871</b>	<b>688</b>	<b>18580</b>	<b>44156</b>
11	<b>Real Estate, Ownership of Dwellings and Business services (only Residential Buildings Part)</b>	<b>567449</b>	<b>0</b>	<b>0</b>	<b>12</b>	<b>0</b>	<b>1</b>	<b>567462</b>
12	<b>Public Administration</b>	<b>174158</b>	<b>237441</b>	<b>199634</b>	<b>8216</b>	<b>1980</b>	<b>40478</b>	<b>661907</b>
13	<b>Other Services</b>	<b>49127</b>	<b>0</b>	<b>11908</b>	<b>4283</b>	<b>1844</b>	<b>6987</b>	<b>74149</b>
<b>Total</b>		<b>1819300</b>	<b>253199</b>	<b>823616</b>	<b>1846199</b>	<b>91287</b>	<b>275749</b>	<b>5109350</b>

P: Provisional

TABLE 4.25

ESTIMATES OF GROSS FIXED CAPITAL FORMATION IN HARYANA BY  
INDUSTRY OF USE AT CONSTANT (2004-05) PRICES 2011-12 (P)

₹ in Lakh)

S. No.	Industry	Buildings	Roads & Bridges	Other Construction	Plant & Machinery	Transport Equipments	Other Equipments	Total G.F.C.F.
1	Agriculture	173373	2273	49124	39587	69	27200	291626
2	Forestry	0	0	3403	118	25	173	3719
3	Fishing	0	0	315	24	0	56	395
4	Mining & Quarrying	0	0	0	4	0	47	51
5	<b>Manufacturing</b>	<b>274387</b>	<b>0</b>	<b>21028</b>	<b>1047816</b>	<b>26730</b>	<b>67197</b>	<b>1437158</b>
	i) Registered	21725	0	21028	937286	2876	49834	1032749
	ii) Un-registered	252662	0	0	110530	23854	17363	404409
6	Electricity, Gas and Water Supply	25686	-5	189430	224621	-1217	7251	445766
7	Construction	6220	6645	35365	167	12	13134	61543
8	<b>Trade, Hotels &amp; Restaurants</b>	<b>13009</b>	<b>0</b>	<b>442</b>	<b>4800</b>	<b>5822</b>	<b>4588</b>	<b>28661</b>
	i) Trade	9738	0	442	4717	5352	4582	24831
	ii) Hotels & Restaurants	3271	0	0	83	470	6	3830
9	<b>Transport, Storage &amp; Communication</b>	<b>25536</b>	<b>0</b>	<b>39480</b>	<b>130529</b>	<b>38202</b>	<b>2705</b>	<b>236452</b>
	i) Railways	21887	0	0	23560	0	0	45447
	ii) Transport by Other means	1681	0	74	124	38194	2525	42598
	iii) Storage	1968	0	12	33	8	180	2201
	iv) Communication	0	0	39394	106812	0	0	146206
10	Banking & Insurance	1923	0	324	16683	553	11887	31370
11	Real Estate, Ownership of Dwellings and Business services (only Residential Buildings Part)	317899	0	0	10	0	0	317909
12	Public Administration	97567	134299	110539	6567	1589	25898	376459
13	Other Services	27522	0	6594	3424	1480	4470	43490
	<b>Total</b>	<b>963122</b>	<b>143212</b>	<b>456044</b>	<b>1474350</b>	<b>73265</b>	<b>164606</b>	<b>3274599</b>

P: Provisional

**TABLE 4.26**

**ESTIMATES OF GROSS FIXED CAPITAL FORMATION IN HARYANA  
BY ALL INSTITUTIONS OF PUBLIC SECTOR AT CURRENT PRICES**

		(₹. in Lakh)							
Sr. No.	Industry	2004-05	2005-06	2006-07	2007-08	2008-09	2009-10(R)	2010-11(R)	2011-12(P)
1	Agriculture	45770	59432	70047	113011	110267	113653	87499	99890
2	Forestry	3748	6783	6776	7315	9190	6983	6187	6595
3	Fishing	29	54	39	73	491	290	229	58
4	Mining & Quarrying	83	58	80	79	86	84	89	79
5	Manufacturing	34326	36347	142090	123609	283461	120462	149218	136124
	I) Registered	34326	36347	142090	123609	283461	120462	149218	136124
	ii) Un-registered	0	0	0	0	0	0	0	0
6	Electricity, Gas and Water Supply	116690	158002	245683	306875	450695	468235	702852	678767
7	Construction	35189	37078	39620	67844	69990	100320	93905	106938
8	Trade, Hotels & Restaurants	2903	3495	3011	3797	28557	31768	31914	32006
	I) Trade	1394	1553	1339	2187	26535	29029	29282	29984
	ii) Hotels & Restaurants	1509	1942	1672	1610	2022	2739	2632	2022
9	Transport, Storage & Communication	45575	63211	60950	106597	78249	99865	101879	101316
	I) Railways	4912	31520	33821	75165	32508	58851	62311	68542
	ii) Transport by Other means	9020	7752	7838	13387	20214	11791	13661	116098
	iii) Storage	199	157	587	1018	287	8010	14095	3801
	iv) Communication	31444	23782	18704	17027	25240	21213	11812	12875
10	Banking & Insurance	12022	8572	7388	11647	9894	22201	19982	24658
11	Real Estate, Ownership of Dwellings and Business services (only Residential Buildings Part )	2714	3513	7891	10665	15302	19946	17522	25801
12	Public Administration	134751	151465	184014	265885	301309	494153	516331	661907
13	Other Services	5587	10496	11718	21813	22772	26856	13548	20600
<b>Total</b>		<b>439387</b>	<b>538506</b>	<b>779307</b>	<b>1039210</b>	<b>1380263</b>	<b>1504816</b>	<b>1741155</b>	<b>1894739</b>

R: Revised

P: Provisional



**TABLE 4.27**

**ESTIMATES OF GROSS FIXED CAPITAL FORMATION IN HARYANA  
BY ALL INSTITUTIONS OF PUBLIC SECTOR AT CONSTANT (2004-05) PRICES**

(₹. in Lakh)

Sr. No.	Industry	2004-05	2005-06	2006-07	2007-08	2008-09	2009-10(R)	2010-11(R)	2011-12(P)
1	Agriculture	45770	55398	64262	93041	81770	79554	54697	55605
2	Forestry	3748	6593	6212	6004	6789	4883	3866	3719
3	Fishing	29	52	36	63	372	219	147	42
4	Mining & Quarrying	83	57	73	65	64	65	65	51
5	Manufacturing	34326	35126	129035	107271	227227	83497	113108	97886
	I) Registered	34326	35126	129035	107271	227227	83497	113108	97886
	ii) Un-registered	0	0	0	0	0	0	0	0
6	Electricity, Gas and Water Supply	116690	153153	225064	263867	375053	336477	526416	445766
7	Construction	35189	36258	36350	55688	51735	70160	58173	51200
8	Trade, Hotels & Restaurants	2903	3409	2725	3176	21525	23068	21741	19820
	I) Trade	1394	1511	1219	1864	20038	21179	20005	18686
	ii) Hotels & Restaurants	1509	1898	1506	1312	1487	1889	1736	1134
9	Transport, Storage & Communication	45575	61348	55496	90484	62504	75910	72914	67733
	I) Railways	4912	30611	30577	63131	25501	44391	44565	45447
	ii) Transport by Other means	9020	7547	7367	12259	17522	9935	11185	11997
	iii) Storage	199	154	485	830	216	5771	9319	2155
	iv) Communication	31444	23036	17067	14264	19265	15813	7845	8134
10	Banking & Insurance	12022	8298	6715	10164	8189	18482	16020	118925
11	Real Estate, Ownership of Dwellings and Business services (only Residential Buildings Part )	2714	3428	7109	8664	11229	13646	10926	14457
12	Public Administration	134751	147069	168623	219827	227237	357948	343145	376459
13	Other Services	5587	10212	10631	17929	17060	19257	8827	12607
	<b>Total</b>	<b>439387</b>	<b>520401</b>	<b>712331</b>	<b>876243</b>	<b>1090754</b>	<b>1083166</b>	<b>1230045</b>	<b>1174270</b>

R: Revised

P: Provisional

**TABLE 4.28**

**ESTIMATES OF GROSS FIXED CAPITAL FORMATION IN HARYANA  
BY ALL INSTITUTIONS OF PRIVATE SECTOR AT CURRENT PRICES**

		(₹. in Lakh)							
Sr. No.	Industry	2004-05	2005-06	2006-07	2007-08	2008-09	2009-10(R)	2010-11(R)	2011-12(P)
1	Agriculture	67291	70634	96844	133705	180964	251308	355429	514828
2	Forestry	13412	1	0	1	34	39	120	0
3	Fishing	362	720	483	718	491	676	672	628
4	Mining & Quarrying	4702	4886	5032	5354	5367	1795	0	0
5	<b>Manufacturing</b>	<b>618524</b>	<b>708608</b>	<b>747790</b>	<b>1013500</b>	<b>1016373</b>	<b>1167154</b>	<b>1408290</b>	<b>1840785</b>
	I) Registered	332068	395225	388861	615040	589840	697366	882451	1194650
	ii) Un-registered	286456	313383	358929	398460	426533	469788	525839	646135
6	Electricity, Gas and Water Supply	0	0	0	0	0	0	0	0
7	Construction	325	352	388	428	483	561	494	534
8	<b>Trade, Hotels &amp; Restaurants</b>	<b>5718</b>	<b>5800</b>	<b>6651</b>	<b>9111</b>	<b>8767</b>	<b>8015</b>	<b>8897</b>	<b>12445</b>
	I) Trade	3576	3796	4097	6369	5104	5276	5775	7927
	ii) Hotels & Restaurants	2142	2004	2554	2742	3663	2739	3122	4518
9	<b>Transport, Storage &amp; Communication</b>	<b>41786</b>	<b>60234</b>	<b>79759</b>	<b>87025</b>	<b>168165</b>	<b>220140</b>	<b>215181</b>	<b>230683</b>
	I) Railways	0	0	0	0	0	0	0	0
	ii) Transport by Other means	20968	20042	33066	28448	30208	29997	39035	38727
	iii) Storage	361	346	348	236	311	82	97	63
	iv) Communication	20457	39846	46345	58341	137646	190061	176049	191893
10	Banking & Insurance	6901	7434	9752	13095	6078	7073	15801	19498
11	Real Estate, Ownership of Dwellings and Business services (only Residential Buildings Part )	240802	255576	285422	327994	374265	405218	472988	541661
12	Public Administration	0	0	0	0	0	0	0	0
13	Other Services	12751	10335	15004	16201	23970	35464	42532	53549
<b>Total</b>		<b>1012574</b>	<b>1124580</b>	<b>1247125</b>	<b>1607132</b>	<b>1784957</b>	<b>2097443</b>	<b>2520404</b>	<b>3214611</b>

R: Revised

P: Provisional

**TABLE 4.29****ESTIMATES OF GROSS FIXED CAPITAL FORMATION IN HARYANA  
BY ALL INSTITUTIONS OF PRIVATE SECTOR AT CONSTANT (2004-05) PRICES**

(₹. in Lakh)

Sr. No.	Industry	2004-05	2005-06	2006-07	2007-08	2008-09	2009-10(R)	2010-11(R)	2011-12(P)
1	Agriculture	67291	68895	88492	110280	132202	160314	194054	236021
2	Forestry	13412	1	0	1	25	27	74	0
3	Fishing	362	700	443	588	362	476	421	353
4	Mining & Quarrying	4702	4775	4571	4402	3976	1388	0	0
5	Manufacturing	618524	687407	677681	863084	799766	917171	1078563	1339272
	I) Registered	332068	382351	352819	531710	473192	573944	716507	934863
	ii) Un-registered	286456	305056	324862	331374	326574	343227	362056	404409
6	Electricity, Gas and Water Supply	0	0	0	0	0	0	0	0
7	Construction	325	343	351	354	367	421	347	343
8	Trade, Hotels & Restaurants	5718	5654	6180	8288	7081	6365	6686	4841
	I) Trade	3576	3698	3876	6054	4384	4447	4689	6145
	ii) Hotels & Restaurants	2142	1956	2304	2234	2697	1918	1997	2696
9	Transport, Storage & Communication	41786	58400	73971	76547	138823	177248	165369	168719
	I) Railways	0	0	0	0	0	0	0	0
	ii) Transport by Other means	20968	19516	31426	26303	26467	25444	32059	30601
	iii) Storage	361	336	312	199	247	63	68	46
	iv) Communication	20457	38548	42233	50045	112109	151741	133242	138072
10	Banking & Insurance	6901	7251	8879	11284	4504	5387	11017	12445
11	Real Estate, Ownership of Dwellings and Business services (only Residential Buildings Part)	240802	248953	257383	266102	275121	284448	294880	303452
12	Public Administration	0	0	0	0	0	0	0	0
13	Other Services	12751	10064	13627	13289	17781	25388	27565	30883
<b>Total</b>		<b>1012574</b>	<b>1092443</b>	<b>1131578</b>	<b>1354219</b>	<b>1380008</b>	<b>1578633</b>	<b>1778976</b>	<b>2100329</b>

R: Revised

P: Provisional

**TABLE 4.30**

**ESTIMATES OF GROSS FIXED CAPITAL FORMATION IN HARYANA  
BY ALL INSTITUTIONS OF PUBLIC ADMINISTRATION AT CURRENT PRICES**

(₹. in Lakh)

Sr. No.	Industry	2004-05	2005-06	2006-07	2007-08	2008-09	2009-10(R)	2010-11(R)	2011-12(P)
1	Agriculture	21453	15146	19434	31320	39167	44022	26662	25995
2	Forestry	38	38	80	80	1207	796	188	185
3	Fishing	29	54	39	73	491	290	229	58
4	Mining & Quarrying	83	58	80	79	86	84	89	79
5	Manufacturing	0	0	0	71	0	0	0	0
	I) Registered	0	0	0	71	0	0	0	0
	ii) Un-registered	0	0	0	0	0	0	0	0
6	Electricity, Gas and Water Supply	1725	2357	3301	3720	4136	4470	4122	5068
7	Construction	33451	34954	36568	66258	67392	100124	93780	106872
8	Trade, Hotels & Restaurants	1340	1696	1550	1428	1879	2596	1821	2003
	I) Trade	0	0	0	0	0	0	0	0
	ii) Hotels & Restaurants	1340	1696	1550	1428	1879	2596	1821	2003
9	Transport, Storage & Communication	0	0	0	0	0	0	0	0
	I) Railways	0	0	0	0	0	0	0	0
	ii) Transport by Other means	0	0	0	0	0	0	0	0
	iii) Storage	0	0	0	0	0	0	0	0
	iv) Communication	0	0	0	0	0	0	0	0
10	Banking & Insurance	0	0	0	0	0	0	0	0
11	Real Estate, Ownership of Dwellings and Business services (only Residential Buildings Part )	1215	638	769	2296	2900	2757	1693	1478
12	Public Administration	134751	151465	184014	265885	301309	494153	516331	661907
13	Other Services	5586	10493	11715	21801	22406	26772	13452	20580
	<b>Total</b>	<b>199671</b>	<b>216899</b>	<b>257550</b>	<b>393011</b>	<b>440973</b>	<b>676064</b>	<b>658367</b>	<b>824225</b>

R: Revised

P: Provisional

**TABLE 4.31**

**ESTIMATES OF GROSS FIXED CAPITAL FORMATION IN HARYANA  
BY ALL INSTITUTIONS OF PUBLIC ADMINISTRATION AT CONSTANT (2004-05) PRICES**

(₹. in Lakh)

Sr. No.	Industry	2004-05	2005-06	2006-07	2007-08	2008-09	2009-10(R)	2010-11(R)	2011-12(P)
1	Agriculture	21453	13363	17837	26083	29238	30855	16719	14655
2	Forestry	38	37	73	69	892	557	120	109
3	Fishing	29	52	36	63	372	219	147	42
4	Mining & Quarrying	83	57	73	65	64	65	65	51
5	Manufacturing	0	0	0	58	0	0	0	0
	I) Registered	0	0	0	58	0	0	0	0
	ii) Un-registered	0	0	0	0	0	0	0	0
6	Electricity, Gas and Water Supply	1725	2291	2974	3022	3034	3058	2571	2944
7	Construction	33451	34194	33591	54313	49811	69994	58070	61147
8	Trade, Hotels & Restaurants	1340	1657	1396	1160	1379	1776	1168	1122
	I) Trade	0	0	0	0	0	0	0	0
	ii) Hotels & Restaurants	1340	1657	1396	1160	1379	1776	1168	1122
9	Transport, Storage & Communication	0	0	0	0	0	0	0	0
	I) Railways	0	0	0	0	0	0	0	0
	ii) Transport by Other means	0	0	0	0	0	0	0	0
	iii) Storage	0	0	0	0	0	0	0	0
	iv) Communication	0	0	0	0	0	0	0	0
10	Banking & Insurance	0	0	0	0	0	0	0	0
11	Real Estate, Ownership of Dwellings and Business services (only Residential Buildings Part)	1215	623	693	1865	2130	1889	1058	831
12	Public Administration	134751	147069	168623	219827	227237	357948	343145	376459
13	Other Services	5586	10209	10628	17919	16763	19188	8763	12594
	<b>Total</b>	<b>199671</b>	<b>209552</b>	<b>235924</b>	<b>324444</b>	<b>330920</b>	<b>485549</b>	<b>431826</b>	<b>469954</b>

R: Revised

P: Provisional

**TABLE 4.32**

**ESTIMATES OF GROSS FIXED CAPITAL FORMATION IN HARYANA  
BY ALL INSTITUTIONS OF DEPARTMENTAL ENTERPRISES  
AT CURRENT PRICES**

(₹. in Lakh)

Sr. No.	Industry	2004-05	2005-06	2006-07	2007-08	2008-09	2009-10(R)	2010-11(R)	2011-12(P)
1	<b>Agriculture</b>	24281	44284	50439	80863	70919	69282	60488	73546
2	<b>Forestry</b>	3710	6745	6696	7235	7983	6187	5999	6410
3	<b>Fishing</b>	0	0	0	0	0	0	0	0
4	<b>Mining &amp; Quarrying</b>	0	0	0	0	0	0	0	0
5	<b>Manufacturing</b>	7	6	10	9	74	53	61	79
	I) Registered	7	6	10	9	74	53	61	79
	ii) Un-registered	0	0	0	0	0	0	0	0
6	<b>Electricity, Gas and Water Supply</b>	0	0	0	0	0	0	0	0
7	<b>Construction</b>	146	0	53	65	146	192	121	62
8	<b>Trade, Hotels &amp; Restaurants</b>	0	0	0	0	143	0	0	0
	I) Trade	0	0	0	0	143	0	0	0
	ii) Hotels & Restaurants	0	0	0	0	0	0	0	0
9	<b>Transport, Storage &amp; Communication</b>	13932	39272	41659	88552	52722	70642	75972	84640
	I) Railways	4912	31520	33821	75165	32508	58851	62311	68542
	ii) Transport by Other means	9020	7752	7838	13387	20214	11791	13661	16098
	iii) Storage	0	0	0	0	0	0	0	0
	iv) Communication	0	0	0	0	0	0	0	0
10	<b>Banking &amp; Insurance</b>	0	0	0	0	0	0	0	0
11	<b>Real Estate, Ownership of Dwellings and Business services (only Residential Buildings Part )</b>	0	0	0	0	0	0	0	0
12	<b>Public Administration</b>	0	0	0	0	0	0	0	0
13	<b>Other Services</b>	0	0	0	0	0	0	0	0
	<b>Total</b>	<b>42076</b>	<b>90307</b>	<b>98857</b>	<b>176724</b>	<b>131987</b>	<b>146356</b>	<b>142641</b>	<b>164737</b>

R: Revised

P: Provisional

**TABLE 4.33**

**ESTIMATES OF GROSS FIXED CAPITAL FORMATION IN HARYANA  
BY ALL INSTITUTIONS OF DEPARTMENTAL ENTERPRISES  
AT CONSTANT (2004-05) PRICES**

(₹. in Lakh)

Sr. No.	Industry	2004-05	2005-06	2006-07	2007-08	2008-09	2009-10(R)	2010-11(R)	2011-12(P)
1	Agriculture	24281	42035	46266	66281	52400	48428	37727	40723
2	Forestry	3710	6556	6139	5935	5897	4326	3746	3610
3	Fishing	0	0	0	0	0	0	0	0
4	Mining & Quarrying	0	0	0	0	0	0	0	0
5	Manufacturing	7	6	9	7	54	41	43	51
	I) Registered	7	6	9	7	54	41	43	51
	ii) Un-registered	0	0	0	0	0	0	0	0
6	Electricity, Gas and Water Supply	0	0	0	0	0	0	0	0
7	Construction	146	0	48	57	124	163	100	50
8	Trade, Hotels & Restaurants	0	0	0	0	108	0	0	0
	I) Trade	0	0	0	0	0	0	0	0
	ii) Hotels & Restaurants	0	0	0	0	108	0	0	0
9	Transport, Storage & Communication	13932	38158	37944	75390	43023	54326	55750	57444
	I) Railways	4912	30611	30577	63131	25501	44391	44565	45447
	ii) Transport by Other means	9020	7547	7367	12259	17522	9935	11185	11997
	iii) Storage	0	0	0	0	0	0	0	0
	iv) Communication	0	0	0	0	0	0	0	0
10	Banking & Insurance	0	0	0	0	0	0	0	0
11	Real Estate, Ownership of Dwellings and Business services (only Residential Buildings Part)	0	0	0	0	0	0	0	0
12	Public Administration	0	0	0	0	0	0	0	0
13	Other Services	0	0	0	0	0	0	0	0
	<b>Total</b>	<b>42076</b>	<b>86755</b>	<b>90406</b>	<b>147670</b>	<b>101606</b>	<b>107284</b>	<b>97366</b>	<b>101878</b>

R: Revised

P: Provisional

**TABLE 4.34**

**ESTIMATE OF GROSS FIXED CAPITAL FORMATION IN HARYANA  
BY ALL INSTITUTIONS OF NON - DEPARTMENTAL ENTERPRISES  
AT CURRENT PRICES**

(₹. in Lakh)

Sr. No.	Industry	2004-05	2005-06	2006-07	2007-08	2008-09	2009-10(R)	2010-11(R)	2011-12(P)
1	Agriculture	36	2	174	828	181	349	349	349
2	Forestry	0	0	0	0	0	0	0	0
3	Fishing	0	0	0	0	0	0	0	0
4	Mining & Quarrying	0	0	0	0	0	0	0	0
5	<b>Manufacturing</b>	<b>34319</b>	<b>36341</b>	<b>142080</b>	<b>123529</b>	<b>283387</b>	<b>120409</b>	<b>149157</b>	<b>136045</b>
	5.1 Registered	34319	36341	142080	123529	283387	120409	149157	136045
	5.2 Un-registered	0	0	0	0	0	0	0	0
6	Electricity, Gas and Water Supply	114965	155645	242382	303155	446559	463765	698730	673699
7	Construction	1592	2124	2999	1521	2452	4	4	4
8	<b>Trade, Hotels &amp; Restaurants</b>	<b>1563</b>	<b>1799</b>	<b>1461</b>	<b>2369</b>	<b>26535</b>	<b>29172</b>	<b>30093</b>	<b>30003</b>
	8.1 Trade	1394	1553	1339	2187	26535	29029	29282	29984
	8.2 Hotels & Restaurants	169	246	122	182	0	143	811	19
9	<b>Transport, Storage &amp; Communication</b>	<b>31643</b>	<b>23939</b>	<b>19291</b>	<b>18045</b>	<b>25527</b>	<b>29223</b>	<b>25907</b>	<b>16676</b>
	9.1 Railways	0	0	0	0	0	0	0	0
	9.2 Transport by Other means	0	0	0	0	0	0	0	0
	9.3 Storage	199	157	587	1018	287	8010	14095	3801
	9.4 Communication	31444	23782	18704	17027	25240	21213	11812	12875
10	Banking & Insurance	12022	8572	7388	11647	9894	22201	19982	24658
11	Real Estate, Ownership of Dwellings and Business services (only Residential Buildings Part)	1499	2875	7122	8369	12402	17189	15829	24324
12	Public Administration	0	0	0	0	0	0	0	0
13	Other Services	1	3	3	12	366	84	96	20
	<b>Total</b>	<b>197640</b>	<b>231300</b>	<b>422900</b>	<b>469475</b>	<b>807303</b>	<b>682396</b>	<b>940147</b>	<b>905777</b>

R: Revised

P: Provisional



TABLE 4.35

**ESTIMATE OF GROSS FIXED CAPITAL FORMATION IN HARYANA  
BY ALL INSTITUTIONS OF NON - DEPARTMENTAL ENTERPRISES  
AT CONSTANT (2004-05) PRICES**

		(₹. in Lakh)							
Sr. No.	Industry	2004-05	2005-06	2006-07	2007-08	2008-09	2009-10(R)	2010-11(R)	2011-12(P)
1	Agriculture	36	0	159	677	132	271	251	227
2	Forestry	0	0	0	0	0	0	0	0
3	Fishing	0	0	0	0	0	0	0	0
4	Mining & Quarrying	0	0	0	0	0	0	0	0
5	<b>Manufacturing</b>	<b>34319</b>	<b>35120</b>	<b>129026</b>	<b>107206</b>	<b>227173</b>	<b>83456</b>	<b>113065</b>	<b>97835</b>
	5.1 Registered	34319	35120	129026	107206	227173	83456	113065	97835
	5.2 Un-registered	0	0	0	0	0	0	0	0
6	Electricity, Gas and Water Supply	114965	150862	222090	260845	372019	333419	523845	442822
7	Construction	1592	2064	2711	1318	1800	3	3	3
8	<b>Trade, Hotels &amp; Restaurants</b>	<b>1563</b>	<b>1752</b>	<b>1329</b>	<b>2016</b>	<b>20038</b>	<b>21292</b>	<b>20573</b>	<b>18698</b>
	8.1 Trade	1394	1511	1219	1864	20038	21179	20005	18686
	8.2 Hotels & Restaurants	169	241	110	152	0	113	568	12
9	<b>Transport, Storage &amp; Communication</b>	<b>31643</b>	<b>23190</b>	<b>17552</b>	<b>15094</b>	<b>19481</b>	<b>21584</b>	<b>17164</b>	<b>10289</b>
	9.1 Railways	0	0	0	0	0	0	0	0
	9.2 Transport by Other means	0	0	0	0	0	0	0	0
	9.3 Storage	199	154	485	830	216	5771	9319	2155
	9.4 Communication	31444	23036	17067	14264	19265	15813	7845	8134
10	Banking & Insurance	12022	8298	6715	10164	8189	18482	16020	18925
11	Real Estate, Ownership of Dwellings and Business services (only Residential Buildings Part )	1499	2805	6416	6799	9099	11757	9868	13626
12	Public Administration	0	0	0	0	0	0	0	0
13	Other Services	1	3	3	10	297	69	64	13
<b>Total</b>		<b>197640</b>	<b>224094</b>	<b>386001</b>	<b>404129</b>	<b>658228</b>	<b>490333</b>	<b>700853</b>	<b>602438</b>

R: Revised

P: Provisional

**TABLE 4.36****PERCENTAGE OF GROSS FIXED CAPITAL FORMATION To GROSS STATE DOMESTIC PRODUCT OF HARYANA BY INDUSTRY OF USE 2004-05 to 2011-12 AT CURRENT PRICES**

<b>Sr. No.</b>	<b>Industry</b>	<b>2004-05</b>	<b>2005-06</b>	<b>2006-07</b>	<b>2007-08</b>	<b>2008-09</b>	<b>2009-10(R)</b>	<b>2010-11(R)</b>	<b>2011-12(P)</b>
<b>1</b>	<b>Agriculture</b>	<b>5.39</b>	<b>5.98</b>	<b>6.10</b>	<b>7.66</b>	<b>7.26</b>	<b>8.21</b>	<b>8.57</b>	<b>10.14</b>
<b>2</b>	<b>Forestry</b>	<b>16.51</b>	<b>6.02</b>	<b>4.17</b>	<b>3.45</b>	<b>4.22</b>	<b>2.61</b>	<b>2.07</b>	<b>2.07</b>
<b>3</b>	<b>Fishing</b>	<b>3.43</b>	<b>5.94</b>	<b>3.21</b>	<b>4.08</b>	<b>3.18</b>	<b>2.71</b>	<b>1.33</b>	<b>0.80</b>
<b>4</b>	<b>Mining &amp; Quarrying</b>	<b>24.56</b>	<b>13.81</b>	<b>13.65</b>	<b>13.50</b>	<b>13.67</b>	<b>8.83</b>	<b>1.01</b>	<b>0.81</b>
<b>5</b>	<b>Manufacturing</b>	<b>31.92</b>	<b>32.59</b>	<b>34.42</b>	<b>38.96</b>	<b>38.82</b>	<b>30.12</b>	<b>31.92</b>	<b>36.08</b>
	5.1 Registered	26.30	27.45	30.01	36.71	36.72	25.52	28.15	32.33
	5.2 Un-registered	43.90	43.91	43.98	43.97	43.98	43.87	43.32	47.40
<b>6</b>	<b>Electricity, Gas and Water Supply</b>	<b>72.38</b>	<b>75.77</b>	<b>120.61</b>	<b>138.56</b>	<b>141.69</b>	<b>139.94</b>	<b>173.19</b>	<b>253.06</b>
<b>7</b>	<b>Construction</b>	<b>3.84</b>	<b>3.61</b>	<b>3.24</b>	<b>4.84</b>	<b>4.27</b>	<b>4.94</b>	<b>4.29</b>	<b>4.26</b>
<b>8</b>	<b>Trade, Hotels &amp; Restaurants</b>	<b>0.56</b>	<b>0.51</b>	<b>0.43</b>	<b>0.48</b>	<b>1.12</b>	<b>0.95</b>	<b>0.78</b>	<b>0.71</b>
<b>9</b>	<b>Transport, Storage &amp; Communication</b>	<b>11.27</b>	<b>13.20</b>	<b>12.91</b>	<b>14.59</b>	<b>16.26</b>	<b>16.98</b>	<b>14.79</b>	<b>13.42</b>
	9.1 Railways	4.13	20.62	18.79	31.30	14.51	22.07	27.60	27.97
	9.2 Transport by Other means	5.55	4.26	5.26	4.47	4.52	2.96	3.07	2.77
	9.3 Storage	7.38	6.74	12.05	9.28	4.07	65.71	87.88	19.97
	9.4 Communication	47.93	51.82	52.60	55.18	101.02	108.25	102.04	89.36
<b>10</b>	<b>Banking &amp; Insurance</b>	<b>6.24</b>	<b>4.58</b>	<b>4.09</b>	<b>5.00</b>	<b>2.77</b>	<b>4.42</b>	<b>4.00</b>	<b>3.72</b>
<b>11</b>	<b>Real Estate, Ownership of Dwellings and Business services (only Residential Buildings Part )</b>	<b>28.82</b>	<b>24.47</b>	<b>24.51</b>	<b>23.05</b>	<b>22.46</b>	<b>19.52</b>	<b>20.64</b>	<b>19.72</b>
<b>12</b>	<b>Public Administration</b>	<b>57.09</b>	<b>56.22</b>	<b>63.65</b>	<b>81.49</b>	<b>66.87</b>	<b>87.85</b>	<b>79.39</b>	<b>94.74</b>
<b>13</b>	<b>Other Services</b>	<b>3.62</b>	<b>3.59</b>	<b>3.93</b>	<b>4.84</b>	<b>4.51</b>	<b>4.20</b>	<b>3.28</b>	<b>3.80</b>
	<b>Total</b>	<b>15.16</b>	<b>15.27</b>	<b>15.74</b>	<b>17.46</b>	<b>17.34</b>	<b>16.11</b>	<b>16.35</b>	<b>16.92</b>

R: Revised

P: Provisional

**TABLE 4.37**

**PERCENTAGE OF GROSS FIXED CAPITAL FORMATION TO GROSS  
STATE DOMESTIC PRODUCT IN HARYANA  
2004-05 TO 2011-12 AT CURRENT PRICES**

Sr. No.	Year	Gross State Domestic Product (₹. in Lakh)			Gross Fixed Capital Formation (₹. in Lakh)			Percentage of GFCF to GSDP		
		Primary	Secondary	Tertiary	Primary	Secondary	Tertiary	Primary	Secondary	Tertiary
1	2	3	4	5	6	7	8	9	10	11
1	2004-05	2231982	3132347	4215183	135397	805054	511210	6.1	25.7	12.1
2	2005-06	2336981	3531153	5020323	142568	940387	580131	6.1	26.6	11.6
3	2006-07	2951869	4023343	5898022	179301	1175571	671560	6.1	29.2	11.4
4	2007-08	3491352	4550801	7117437	260256	1512256	873830	7.5	33.2	12.3
5	2008-09	4303135	5317134	8631946	306890	1821002	1037328	7.1	34.2	12.0
6	2009-10(R)	4770297	6650067	10939661	374828	1856732	1370699	7.9	27.9	12.5
7	2010-11(R)	5546781	7482603	13032744	450225	2354759	1456575	8.1	31.5	11.2
8	2011-12(P)	6477283	8271841	15446728	622078	2763148	1724124	9.6	33.4	11.2

R: Revised

P: Provisional

**TABLE 4.38**

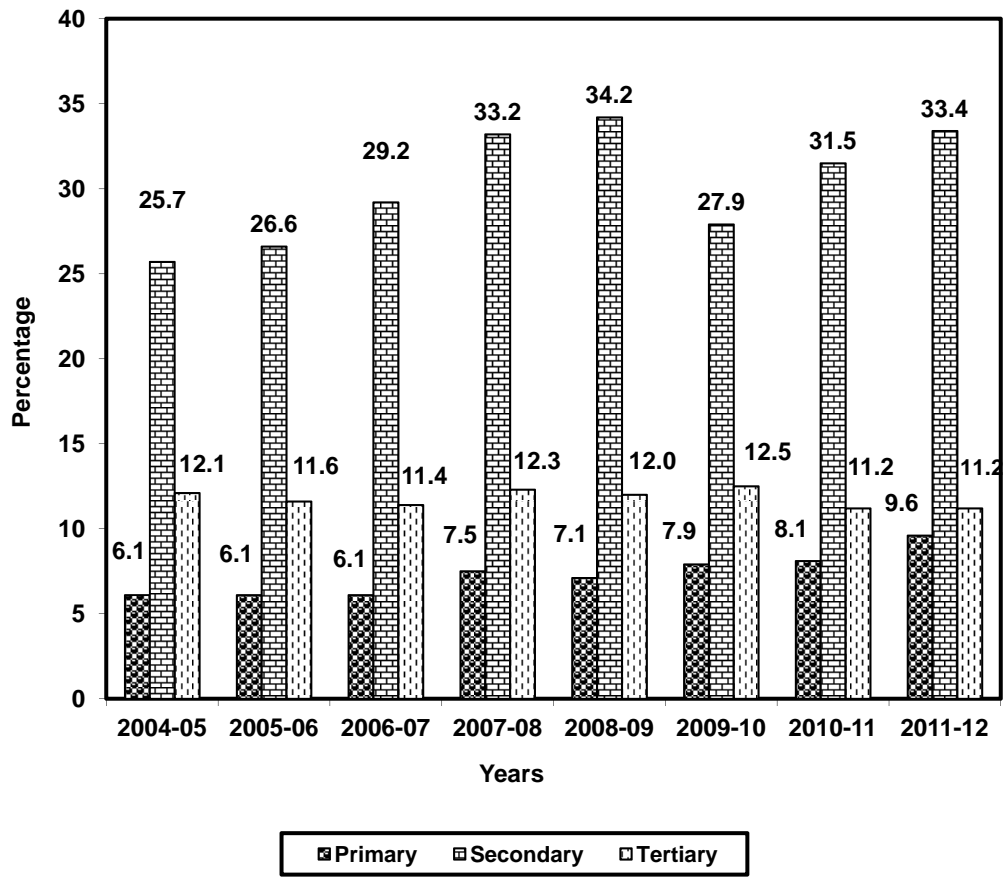
**PERCENTAGE OF GROSS FIXED CAPITAL FORMATION TO GROSS  
STATE DOMESTIC PRODUCT IN HARYANA AND ALL INDIA  
2004-05 TO 2011-12 AT CURRENT PRICES**

Sr. No.	Year	All India			Haryana		
		Gross Domestic Product at Current Prices (₹.Crore)	Gross Fixed Capital Formation at Current Prices (₹.Crore)	GFCF as Percentage of GDP	GSDP at Current Prices (₹.Crore)	Gross Fixed Capital Formation at Current Prices (₹.Crore)	GFCF as Percentage of GSDP
1	2	3	4	5	6	7	8
1	2004-05	2971464	931028	31.3	95795	14520	15.2
2	2005-06	3390503	1120292	33.0	108885	16631	15.3
3	2006-07	3953276	1343774	34.0	128732	20264	15.7
4	2007-08	4582086	1641673	35.8	151596	26463	17.5
5	2008-09	5303567	1821099	34.3	182522	31652	17.3
6	2009-10(R)	6091485	2041758	33.5	223600	36023	15.5
7	2010-11(R)	7157412	2331382	32.6	260621	42616	16.3
8	2011-12(P)	8232652	2614634	37.8	301959	51094	16.9

R: Revised

P: Provisional

**Percentage of Gross Fixed Capital Formation to  
Gross State Domestic Product in Haryana At Current  
Prices**



## ABBREVIATIONS USED IN THE PUBLICATION

GFCF	Gross Fixed Capital Formation
AIDIS	All India Debt and Investment Survey
ASI	Annual Survey of Industries
GOI	Government of India
CSO	Central Statistical Office
GDP	Gross Domestic Product
GSDP	Gross State Domestic Product
HAFED	Haryana State Co-operative Supply & Marketing Federation Ltd.
B&R	Buildings & Roads
NSSO	National Sample Survey Office
RBI	Reserve Bank of India
RAC	Regional Accounts Committee