



GOVERNMENT OF HARYANA

**INDEX
OF
INDUSTRIAL PRODUCTION
IN
HARYANA**

1999-2000 to 2006-07

(BASE YEAR 1993-94)

Issued by

**ECONOMIC AND STATISTICAL ADVISER,
PLANNING DEPARTMENT, GOVERNMENT OF HARYANA
2008**

Publication No. 894



GOVERNMENT OF HARYANA

INDEX
OF
INDUSTRIAL PRODUCTION
IN
HARYANA

1999-2000 to 2006-07

(BASE YEAR 1993-94)

Issued by

**ECONOMIC AND STATISTICAL ADVISER,
PLANNING DEPARTMENT, GOVERNMENT OF HARYANA
2008**

PREFACE

Index of Industrial Production is one of the Prime indicators of the economic development for the measurement of trend in the behaviour of the Industrial Production over a period of time with reference to a chosen base year. In other words, the Index of Industrial Production is the yardstick for measuring the industrial growth of the State. It indicates the relative change of physical production in the field of industries during a specified year as compared to previous year.

The first report on Index of Industrial Production at the State level, with base year 1970-71 was released in March 1977. The present report for the year 2006-07 is the fifth issue of the series with base year 1993-94. The Index of Industrial Production of Haryana State is confined to Manufacturing and Electricity Sectors only, with an analysis of Use-Based Classification of the Index Numbers.

This report provides an useful information for planning and formulation of industrial development programmes by the State as well as by the industrialists/entrepreneurs who are concerned with the production, planning and industrial development of the State.

I take this opportunity to thank the Officers of Central Statistical Organization (IIP unit), Government of India for providing valuable guidance in preparation of Index of Industrial Production. The co-operation extended by National Sample Survey Organisation (Field Operation Division) and various industrial units of the State in timely submission of the production data is highly appreciated and acknowledged. Efforts made by the District Statistical Officers for expediting the collection of production data from the industrial units for computation of IIP are also thankfully acknowledged.

This report has been prepared by Sh. I.S.Mann, Research Officer with the help of Smt. Aruna Chopra, Field Assistant, Sh. Jaswant Singh, Computer and Smt. Krishna Sharma, Steno typist under the guidance of Sh. Deep Chand, Deputy Economic and Statistical Adviser and over all supervision of Sh. Samar Singh Bhoria, Joint Economic and Statistical Adviser and Sh. S.C.L. Datta, Addl. Economic & Statistical Adviser to Government, Haryana.

Dated, Chandigarh
May 22, 2008.

R.K. BISHNOI
Economic and Statistical Adviser
to Govt. Haryana

CONTENTS

Sr. No.	Description	Page No.
1	2	3

PART - I

Methodology of Index of Industrial Production in Haryana

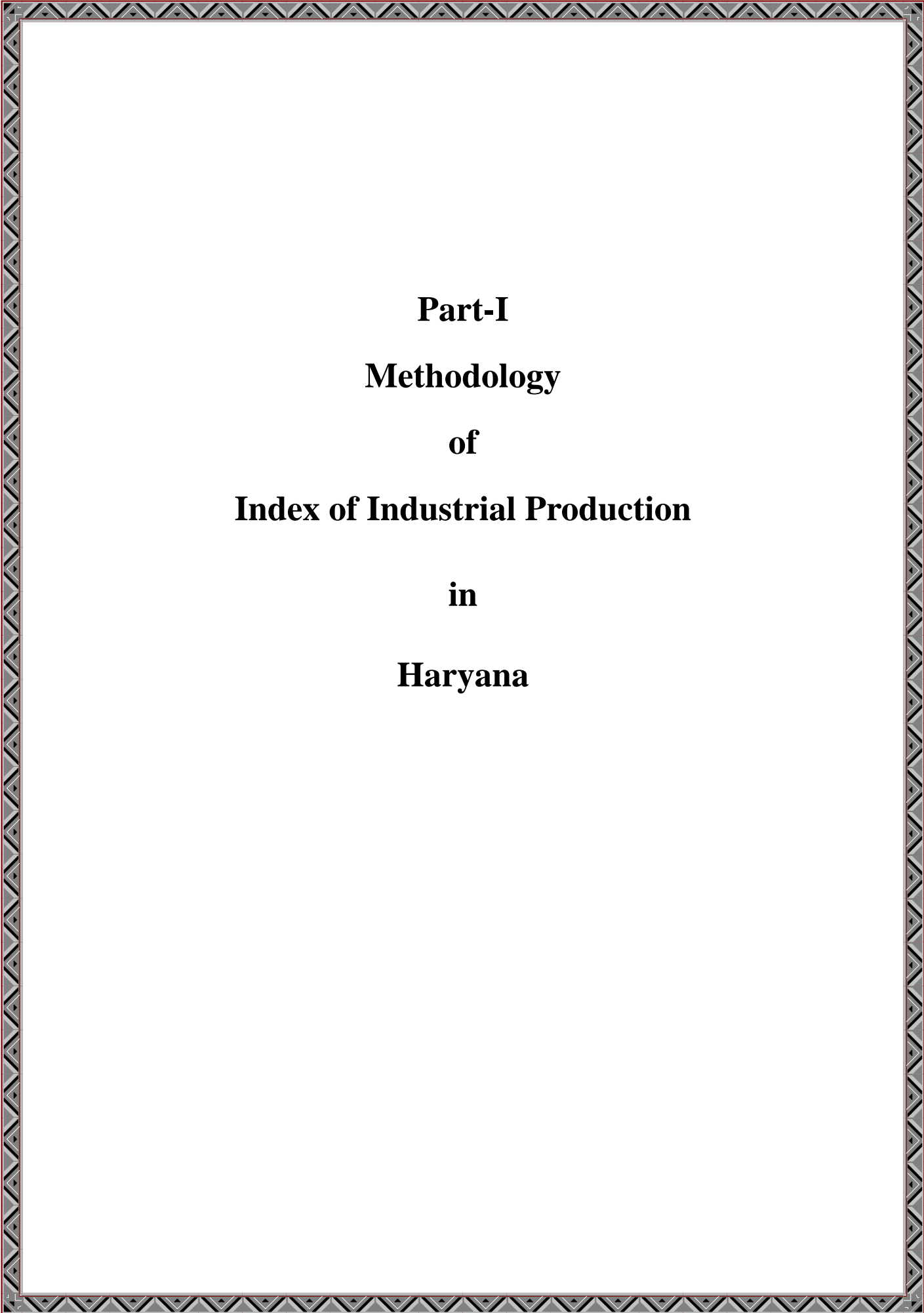
1	Introduction	3-4
2	Methodology	5-9
	(i) Scope and Coverage	5-6
	(ii) Non-Response Units	7
	(iii) Base Year	7
	(iv) Source of Data	7
	(v) Selection of Item Basket	7-8
	(vi) Weighting Diagram	8-9
	(vii) Computation of Index Number	9
3	Tables relating to Selection of Items and Distribution of Weights	
	1.1 : Gross Value of Output of Selected Items for the year 1993-94	11-13
	1.2 : Gross Value of Output of Organised and Un - organised Manufacturing Sector at two digit level for the year 1993-94	14
	1.3 : Distribution of Weights at Sector Level	15
	1.4 : Distribution of Weights among Selected Groups at two digit level for the year 1993 - 94 of Manufacturing Sector (Organised & Un-Organised)	16
	1.5 : Distribution of Weights at Item level based on 1993-94 Data (Manufacturing Sector)	17-23

PART - II

Review of Index of Industrial Production in Haryana

4	Review of Index of Industrial Production in Haryana 2006-07	27-30
----------	--------------------------------------------------------------------	-------

Sr. No.	Description	Page No.
1	2	3
5	Tables and Graphs relating to Index of Industrial Production Tables 2.1 : Annual Index of Industrial Production in Haryana at Division Level 2.2 : Annual Index of Industrial Production in Haryana at Group Level 2.3 : Annual Index of Industrial Production in Haryana at Item level Graphic Presentation G-2.1 Annual Index of Industrial Production in Haryana at Sector Level G-2.2 Annual Index of Industrial Production in Haryana for Manufacturing Sector 2006-07 (2digit Level) G-2.3 Annual Index of Industrial Production in Haryana for Manufacturing Sector 1999-2000 to 2006-07 G-2.4 Annual Index of Industrial Production in Haryana for Electricity Sector 1999-2000 to 2006-07 G-2.5 General Index of Industrial Production in Haryana 1999-2000 to 2006-07	31 35-36 45-52 33 37 39 41 43
PART - III		
Use -Based Classification of Index of Industrial Production in Haryana		
6	Index of Industrial Production in Haryana according to Use-Based Classification	55-61
7	Tables and Graphs relating to Index of Industrial Production according to Use-Based Classification Tables 3.1 : Index of Industrial Production - Use Based Classification (At Item Level) Graphic G-3.1 Weights of Industries at use Based Classification (1993-94) G-3.2 Annual Index of Industrial Production in Haryana - Basic Goods Industries G-3.3 Annual Index of Industrial Production in Haryana - Capital Goods Industries G-3.4 Annual Index of Industrial Production in Haryana - Intermediate Goods Industries G-3.5 Annual Index of Industrial Production in Haryana - Consumer Goods Industries G-3.6 Annual Index of Industrial Production in Haryana for each class of use based Industries	73-80 57 63 65 67 69 71



Part-I
Methodology
of
Index of Industrial Production
in
Haryana

INTRODUCTION

Industrial Sector occupies an important position in Indian Economy and has pivotal role to play in the rapid and balanced economic development. Index of Industrial Production is one of the tools for measuring the growth of the industrial sector at a particular point of time. The index shows the relative change over time in the volume of industrial production and is an effective tool to measure the trend of current industrial production.

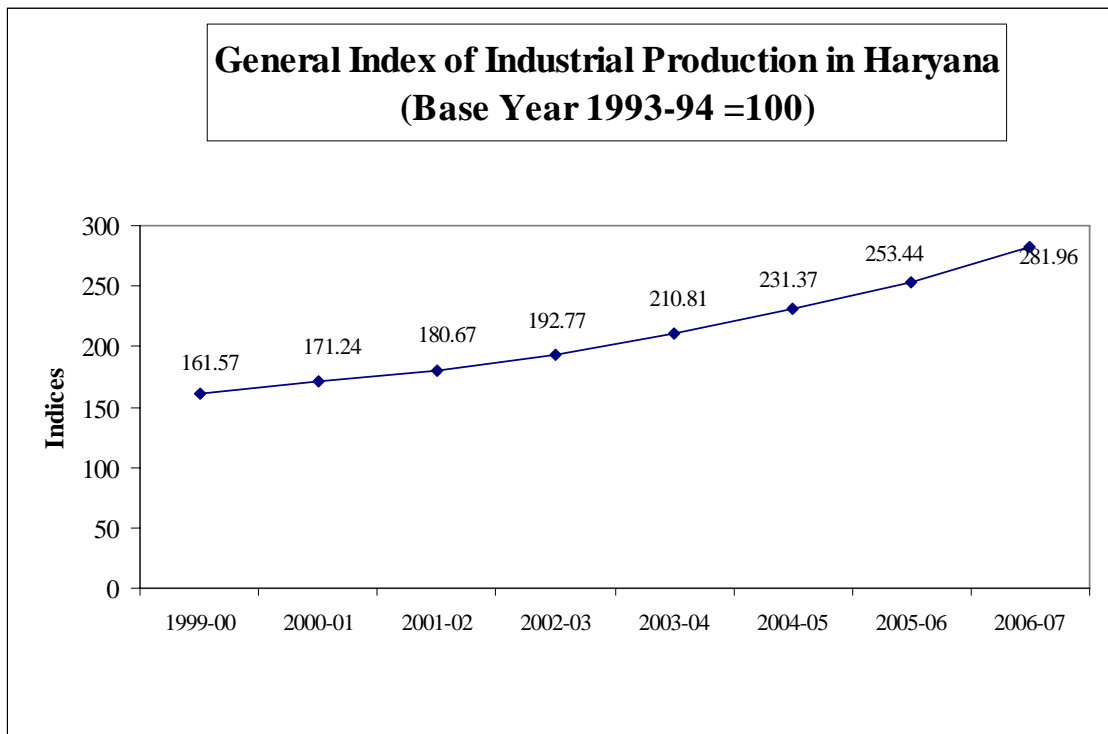
At the National level, Central Statistical Organisation (CSO) prepares all India Index of Industrial Production. The Economic and Statistical Organisation, Haryana is preparing Annual Index of Industrial Production (IIP) of Haryana since the year 1971-72. Industrial sector plays a vital role in the State economy. Due to liberal industrial policy and close proximity of the State to National Capital, the investment in the industrial sector is growing rapidly. There is need to continuously measure the growth of industrial sector with a view to assess and plan the industrial development in the State.

A number of State Directorates of Economic & Statistics are also engaged in compiling the State level Index of Industrial Production (IIP) but this effort on their part lacks comparability due to differences in the choice of base year, periodicity for releasing indices, data sources used, etc. The need for comparable State level IIPs to facilitate comparative studies of the Statewise performance of industrial sector has been felt for quite some time. The Govt. of India has constituted a Technical Advisory Committee (TAC) in June, 1995 for an in-depth examination of various technical issues such as identification of representative items basket for individual State, development of corresponding weighting diagram with an appropriate linkage with the weighting diagram of all India's Index of Industrial Production etc. The TAC resolved technical issues relating to IIP and provided technical guidance in the matter of shifting the base year of current series to new series with 1993-94 as base.

The recommendations of Technical Advisory Committee on comparable Index of Industrial Production were examined by the Central Statistical Organisation (G.O.I.) and based on various recommendations, the guidelines on compilation of State level Index of Industrial Production were prepared and issued to all the State Directorates of Economic and Statistics. According to criteria laid down in the guidelines issued by Central Statistical Organisation (G.O.I.), the Economic and Statistical Organisation, Haryana identified the items basket and prepared the weighting diagram for preparation of comparable State level Index of Industrial Production with 1993-94 as base year.

In the present report the State indices of Industrial Production for Manufacturing and Electricity Sectors have been prepared for the years 1999-2000 to 2006-07 with base year 1993-94. Mining and Quarrying Sector has been excluded due to its insignificant contribution in the State Domestic Product. The General Index of Industrial Production for the series with base year 1993-94 is as under:-

Year	General Index of Industrial Production (Base Year 1993-94 =100)
1999-00	161.57
2000-01	171.24
2001-02	180.67
2002-03	192.77
2003-04	210.81
2004-05	231.37
2005-06	253.44
2006-07	281.96



METHODOLOGY

Scope and Coverage

The Annual Index of Industrial Production of Haryana upto the year 2003-04 was prepared on the basis of production data of selected items of industrial units extracted from ASI returns received from National Sample Survey Organisation (Field Operation Division), Govt. of India, Haryana Wing at Chandigarh. But due to discontinuation of supply of a copy of ASI returns of surveyed industries to DES Haryana by NSSO, FOD from the year 2004-05, the production data is collected from the selected industrial units directly. The Annual Index of Industrial Production with 1993-94 as base year covers two sectors namely Manufacturing and Electricity. The Manufacturing Sector covers the industries registered under section 2m (i) and 2m (ii) of the Factory Act 1948 and functioning within jurisdiction of Haryana. This section 2m (i) refers to the units employing 10 or more workers with power and section 2m (ii) refers to the units employing 20 or more workers without power on any day of the preceding twelve months.

The registered factories are divided into two groups for the purpose of survey by NSSO, FOD i.e. Census and Sample

Census Sector

The newly defined census sector consists of the following categories:-

A. For industrially less developed States/UT's.

Category. -I : All Industrial Units (IU's) of less industrially developed 12 States/UT's

B. For States/UT's other than those industrially less developed States / UT's

Category-II: Industrial Units / Industries having 200 or more workers excluding Category-I

Category-III: All Electricity Undertakings and PSU's not covered under Category-II

Category-IV: Additional Industries / IU's excluding Category - II and III having significant Input/Output/GVA/NVA which would jointly contribute with Category-II and III not less than 90% of NVA within a State.

Categorization of States for ASI survey is same as per existing practice, namely, Category-I will mean the twelve States where there will be only census sector and Category-II will consist of remaining sixteen states having both census and sample sectors.

The list of less industrially developed 12 States/UT's and remaining States is as under: -

Classification of States for ASI Survey

CENSUS SECTOR STATES			BOTH CENSUS AND SAMPLE SECTOR STATES		
Category-I			Category-II		
Sr.No.	State	Code	Sr.No.	State	Code
1.	Goa	06	1	Andhra Pradesh	02
2.	Himachal Pradesh	09	2	Assam	04
3.	Jammu and kashmir	10	3	Bihar including Jharkhand	05
4.	Manipur	15	4	Gujarat	07
5.	Meghalaya	16	5	Haryana	08
6.	Nagaland	18	6	Karnataka	11
7.	Tripura	24	7	Kerala	12
8.	A & N Island	27	8	Madhya Pradesh including Chhatishgarh	13
9.	Chandigarh	28	9	Maharashtra	14
10.	Dadra & Nagar Haveli	29	10	Orissa	19
11.	Daman & Diu	30	11	Punjab	20
12.	Pondichery	33	12	Rajasthan	21
			13	Tamil Nadu	23
			14	Uttar Pradesh including Utrkhand	25
			15	West Bengal	26
			16	Delhi	31

The ASI survey for above categories I, II and III is conducted on complete enumeration basis.

Sample Sector

All industrial units in the entire ASI frame excluding the industrial units already covered under the census sector as defined above are included in sample sector. In the sample sector a part of industrial units is surveyed and the remaining units are covered by applying the variable multipliers at item level.

Non-Response Units

The production of non-response industrial units is calculated on the basis of growth rate of production of response industrial units. The number of workers of non-response industrial units contained in the ASI frame are multiplied with the per worker production of response industrial units to calculate the production of non- response industrial units.

Base Year

The base year of Index of Industrial Production is revised in accordance with the guidelines issued by the Central Statistical Organisation, New Delhi. The main aim of revision of the base year is to eliminate the items that are no longer in production process and to include relevant products which have been added over a period of time reflecting the changing pattern of the industries sector. The Haryana State has prepared the Index of Industrial Production from the year 1971-72 with 1970-71 as base year, which was revised to 1985-86 for compiling the Index for the years 1992-93 to 1996-97. Presently, the Index of Industrial Production (IIP) is prepared with 1993-94 as base year.

Source of Data

The production data for Manufacturing Sector is based on the Annual Survey of Industries (ASI) returns obtained from National Sample Survey Organization (Field Operation Division), Govt. of India. The NSSO, FOD has discontinued sending a copy of ASI returns from the year 2004-05. Therefore, IIP for the year 2004-05 to 2006-07 has been prepared on the basis of production data collected from the selected industrial units. The information regarding generation of electricity is obtained from Central Electricity Authority of India through Central Statistical Organisation, New Delhi.

Selection of Items Basket

The Annual Index of Industrial Production with 1993-94 as base year covers two sectors namely, Manufacturing and Electricity. Mining and Quarrying Sector has been excluded due to its insignificant contribution in the State Domestic Product which was 0.26 percent to the total Gross State Domestic Product of the State in 1993-94 at current prices. The generation of electricity in the State represents the Electricity Sector.

As per recommendations of Technical Advisory Committee on comparable State level Index of Industrial Production, the number of items for the State IIPs are to be selected in such a manner that about 80 percent of the value of output of the respective State's Manufacturing Sector is captured by the selected items. For this, all the items have been

arranged in the descending order of their respective gross value of output obtained from ASI detailed results for 1993-94 and 117 items have been selected for the items basket of Index of Industrial Production covering 81 percent of gross value of output of the State's registered manufacturing sector. Some ambiguous items such as other products, by-products, own construction and items whose flow of data is not regular in ASI are excluded from the items basket and items having identical nature and same unit of measurement have been clubbed together for this purpose.

While selecting items it would not be possible to apportion zero weight to constituent items. It was also not considered desirable to leave out these items, since in many cases their contribution to employment and output was substantially large. The TAC discussed the issue at length and was of the view that by ignoring the groups/sub-groups with negative/zero GVA, many items with large value of output will not find place in the items basket for State IIP's . After detailed deliberations, the Committee decided that instead of GVA, value of output might be taken for preparation of weighting diagram.

List of 117 selected items arranged in the descending order of their respective gross value of output have been shown in Table No. 1.1. Table No. 1.2 depicts the gross value of output of organized and unorganized manufacturing sector of the State at two-digit level for the year 1993-94.

Weighting Diagram

As per recommendations of TAC, the contribution of unorganized sector based on follow up surveys of the Economic Census has been taken into account for allocation of weights at the sectoral level and two digit level. The proportion of gross value of output at current prices for these two sectors has been converted into sectoral weights in such a manner that their total is equal to 1000. The value of output of Electricity Sector has been taken from the National Accounts Statistics (NAS) and for the Manufacturing Sector has been taken from the ASI detailed results 1993-94 (after adjustment for non-response).

The pre-requisite for sound construction of any weight is the determination of relative importance of its various constituents. Therefore, the necessary weights in respect of different industries covered under the index have been determined in proportion to their value of output in the base year as revealed by ASI 1993-94 returns. While tabulating the data from the ASI returns, items of similar nature have been clubbed together in their respective industry group where it was difficult to collect production data on individual item.

The weights were assigned to 117 selected items (Table No.1.1) which contribute 81% of the total gross value of output of the State Manufacturing Sector. The weights at sector level and two digit level are allocated on the basis of gross value of output of Manufacturing Sector supplied by the C.S.O., which is further distributed at item level in proportion to gross value of output of registered manufacturing sector.

The contribution of unorganized manufacturing sector has also been taken into consideration while calculating the weights at major group (2 digit) level. The value of output of organized manufacturing sector was clubbed with the value of output of the unorganized sector based on the survey of Directory Manufacturing Enterprises (DME), Non-Directory Manufacturing Enterprises (NDME) and Own Account Manufacturing Enterprises (OAME) undertaken by Central Statistical Organisation, New Delhi.

Table No. 1.3 shows the distribution of weights at sector level. Distribution of weights among selected groups at two-digit level for the year 1993-94 of manufacturing sector (Organized and Unorganized) has been shown in Table No. 1.4. Item level distribution of weights for manufacturing sector is available at Table No. 1.5.

Computation of Index Number

The Index is computed by using the Laspeyre's Formula: -

$$I = \frac{\sum R_i W_i}{\sum W_i}$$

Where I = Index Number

R_i = Production relative of ith selected item

W_i = Weight assigned to ith item

∑ = Summation of all items within each group upto major group (2 digit) level.

The production relative of an item is defined as percentage growth of the production compared to the base year production.

$$R_i = \frac{P_{ci}}{P_{oi}} \times 100$$

Where R_i = Production relative of ith selected item.

P_{ci} = Current year production of ith item

P_{oi} = Base year production of ith item.

The production relatives are thus calculated at product (4 digit) level of NIC code and the ultimate indices are calculated up to major group (2 digit) level. Sectoral Indices and General Index are based on weighted Laspeyre's Index Number.

Table-1.1 (Contd.)**Gross Value of Output of Selected Items
for the Year 1993-94**

		(Rs. in Lakh)
Sr. No.	Name of the Item	Gross Value of Output
1	2	3
1	Cars	192255
2	Rice all kind	101382
3	Tractors	78500
4	Motor cycles	43051
5	Motor vehicle parts and accessories	37464
6	M. S. pipes and tubes	34599
7	Fertilisers all kind	31892
8	Sugar	28901
9	Edible oil all kind	28834
10	Synthetic / polyester yarn	28655
11	Paper all kind	26874
12	Domestic refrigerators	24080
13	Narrow cold rolled steel strips	21730
14	Tyres for Motor vehicle	21563
15	Cotton yarn	20520
16	Plastic sheets	18553
17	Bicycle parts	18271
18	Bicycles	15825
19	Cotton pressed (Kapas)	14761
20	Cake all kind	11901
21	Stainless steel	11742
22	Cement	11016
23	Rubber shoes and chappals	9891
24	Cotton ginned	9340
25	Auto mobile parts and accessories for motor cycles, scooters and three wheelers	8556
26	Steel wires	8441
27	Steel sheets	7939
28	Glass sheets	7730
29	Biscuits	7486
30	Brass sheets and strips	7460
31	Forging and stamping	7402
32	Loaders	7163
33	Shoddy / Woollen Yarn	6716
34	Bottle and jars	6509
35	Switch gears and control gears	6098
36	Vanaspati ghee	6027
37	Electric fans all types	6014
38	Atta	5987
39	Desi ghee	5616
40	P. V. C. insulated wires and cables	5538
41	Bars and rods	5140

Table-1.1 (Contd.)**Gross Value of Output of Selected Items
for the Year 1993-94**

		(Rs. in Lakh)
Sr. No.	Name of the Item	Gross Value of Output
1	2	3
42	Ordinary casting	4921
43	Electric Motor Phase 1 and 11	4910
44	Spirits all kind	4842
45	Milk all kind	4824
46	Machine screw all types	4637
47	Insecticides / Pesticides (liquid)	4627
48	Aluminium utensils	4513
49	Bran all kind	4464
50	Asbestos cement products	4269
51	Leather shoes and chappals	3927
52	Angle channels	3915
53	Steel utensils	3831
54	Tin containers	3457
55	Milk powder all kind	3389
56	Tractor parts	3384
57	Ceramic tiles	3344
58	Belting all types	3322
59	Cotton seeds	3260
60	Dal all kind	2925
61	Insecticides / Pesticides (solid)	2914
62	Soaps	2879
63	Readymade garments	2806
64	Printing machine	2734
65	Billets and slabs	2592
66	Sanitary wares	2529
67	Corrugated boxes and card board boxes	2509
68	Poultry and cattle feeds	2357
69	Building bricks	2244
70	P V C Pipes	2201
71	Gas cylenders	2141
72	Refractory bricks	2135
73	Malt	2090
74	Cartons	2073
75	Carpet yarn	2032
76	Hand tools	2002
77	Stainless steel ingots	1919
78	Syringes all types	1874
79	Books	1740
80	Country liquor	1675
81	Steel casting	1635
82	Periodical and journals	1639
83	Tablets	1632

Table-1.1 (Concl.)

**Gross Value of Output of Selected Items
for the Year 1993-94**

		(Rs. in Lakh)
Sr. No.	Name of the Item	Gross Value of Output
1	2	3
84	ACSR conductors	1561
85	Beer	1527
86	Capsules	1397
87	Transformers	1346
88	Crockery / Kitchen ware	1332
89	Tubes for motor vehicles	1331
90	Air gas compressors	1318
91	Blowing agents	1288
92	Computer	1225
93	Formaldehyde	1203
94	Soft drink and syrups	1184
95	Brass utensils	1178
96	Starch all kind	1161
97	Bolts and nuts	1074
98	Electric pumps	1069
99	Sports goods	1047
100	Compressors	971
101	Flourescent tubes	948
102	Air -conditioning plants	891
103	Thermocole	883
104	Woollen carpet	830
105	Gasses	726
106	Helmets	625
107	Switches all types	603
108	Crane	597
109	Hydraulic press	589
110	Syrups	547
111	Dyes and colours	544
112	Shampoo	539
113	Electrical capacitors	501
114	Gas stove and cooking ranges	500
115	Microscopes	231
116	Safety glass	215
117	Lenses	70
Total		1115586

Table-1.2**Gross Value of Output of Organised and Un-organised Manufacturing Sector at Two Digit Level for the Year 1993-94.**

(Rs. in Lakh)				
NIC Code 1987	Industry Group	Gross Value of Output of Organised Sector	Gross Value of Output of Un-organised Sector	Total Gross Value of Output
1	2	3	4	5
20-21	Manufacture of food products	229310	21447	250757
22	Manufacture of beverages, tobacco & related products.	15917	11	15928
23	Manufacture of cotton textiles	49251	4101	53352
24	Manufacture of wool, silk and man-made fibre textiles	52412	6731	59143
25	Manufacture of jute and other vegetable fibre textiles (except cotton and coir)	87	588	675
26	Manufacture of textile products (including wearing apparel)	12606	58337	70943
27	Manufacture of wood and wood products, furniture and fixture	6861	12655	19516
28	Manufacture of paper and paper products and printing, publishing and allied industries	43920	1709	45629
29	Manufacture of leather and products of leather, fur and substitute of leather	8021	4499	12520
30	Manufacture of basic chemicals and chemical products(except products of petroleum and coal)	89517	4281	93798
31	Manufacture of rubber, plastics, petroleum and coal products and processing of nuclear fuels	74818	9025	83843
32	Manufacture of non-metallic mineral products	43015	7914	50929
33	Basic metal and alloys industries	137706	404	138110
34	Manufacture of metal products and parts, except machinery and equipment	36186	16507	52693
35-36	Manufacture of machinery and equipment other than transport equipment, scientific equipment, photographic/cinematographic equipment	219730	7323	227053
37	Manufacture of transport equipment and parts	347223	1334	348557
38	Other manufacturing industries	10713	6755	17468
Total (Manufacturing)		1377293	163621	1540914

Table-1.3

Distribution of Weights at Sector Level

Sr.No.	Sector	Gross Value of Output 1993-94 (Rs. in Lakh)	Weight
1	2	3	4
1	Manufacturing*	1540914	983.35
2	Electricity	26098	16.65
Total		1567012	1000.00

* Includes the contribution by un-organised sector also.

Table-1.4

**Distribution of Weights among Selected Groups at Two Digit Level for the
Year 1993-94 of Manufacturing Sector (Organised and Un-organised)
(Based on 1993-94 Data)**

(Rs.in Lakh)					
NIC Code 1987	Industry Group	Gross Value of Output of Organised Sector	Gross Value of Output of Un-organised Sector	Total Gross Value of Output	Weight
1	2	3	4	5	6
20-21	Manufacture of food products.	229310	21447	250757	162.15
22	Manufacture of beverages, tobacco & related products.	15917	11	15928	10.30
23	Manufacture of cotton textiles.	49251	4101	53352	34.50
24	Manufacture of wool, silk and man-made fibre textiles.	52412	6731	59143	38.24
26	Manufacture of textile products (including wearing apparel)	12606	58337	70943	45.87
28	Manufacture of paper and paper products and printing, publishing and allied industries.	43920	1709	45629	29.51
29	Manufacture of leather and products of leather, fur and substitute of leather.	8021	4499	12520	8.09
30	Manufacture of basic chemicals and chemical products(except products of petroleum and coal)	89517	4281	93798	60.65
31	Manufacture of rubber, plastics, petroleum and coal products and processing of nuclear fuels.	74818	9025	83843	54.21
32	Manufacture of non-metallic mineral products.	43015	7914	50929	32.93
33	Basic metal and alloys industries.	137706	404	138110	89.31
34	Manufacture of metal products and parts, except machinery and equipment.	36186	16507	52693	34.07
35-36	Manufacture of machinery and equipment other than transport equipment, scientific equipment, photographic/cinematographic equipment.	219730	7323	227053	146.83
37	Manufacture of transport equipment and parts.	347223	1334	348557	225.39
38	Other manufacturing industries.	10713	6755	17468	11.30
Total (Manufacturing)		1370345	150378	1520723	983.35

TABLE 1.5 (Contd.)**Distribution of Weights at Item Level Based on 1993-94 Data
Manufacturing Sector**

Group/ NIC Code	Items	Gross Value of Output (Rs. Lakh)	Weight
1	2	3	4
20-21	Manufacture of Food Products	215254	162.15
201.4	Milk powder all kind	3389	2.55
201.3	Desi Ghee	5616	4.23
201.4	Milk all kind	4824	3.63
204.1	Atta	5987	4.51
204.2	Rice all kind	101382	76.37
204.2	Bran all kind	4464	3.36
204.3	Dal all kind	2925	2.20
205.2	Biscuits	7486	5.64
206.0	Sugar	28901	21.77
210.0	Vanaspati ghee	6027	4.54
211.2	Edible oil all kind	28834	21.72
211.8	Cake all kind	11901	8.97
217.1& 2	Poultry and cattle feed	2357	1.78
218.0	Starch all kind	1161	0.88
22	Manufacture of Beverages,Tabacco and Related Products	11318	10.30
220.0	Spirits all kind	4842	4.41
222.1	Beer	1527	1.39
222.3	Malt	2090	1.90
223	Country liquor	1675	1.52
224	Soft drinks and syrups	1184	1.08

TABLE 1.5 (Contd.)**Distribution of Weights at Item Level Based on 1993-94 Data
Manufacturing Sector**

Group/ NIC Code	Items	Gross Value of Output (Rs. Lakh)	Weight
1	2	3	4
23	Manufacture of Cotton Textiles	47881	34.50
230.0	Cotton ginned	9340	6.73
230.0	Cotton pressed (Kapas)	14761	10.64
230.0	Cotton seeds	3260	2.35
235.1	Cotton yarn	20520	14.78
24	Manufacture of Wool,Silk and Man-made Fibre Textils	37403	38.24
242.1	Shoddy/woollen yarn	6716	6.87
242.1	Carpet yarn	2032	2.08
247.2	Synthetic/Polyester yarn	28655	29.29
26	Manufacture of Textile Products (inculding wearing apparel)	3636	45.87
263.6	Woollen carpet	830	10.47
265.0	Readymade garments	2806	35.40
28	Manufacture of Paper and Paper Products and Printing, Publishing and Allied Industries	34835	29.51
280.2	Paper all kind	26874	22.77
281.1, 2 & 3	Corrugated boxes and card board boxes	2509	2.12
281.9	Carton	2073	1.76
285.3	Books	1740	1.47
285.3	Periodicals and journals	1639	1.39
29	Manufacture of Leather and Products of Leather, Fur and Substitutes of Leather	3927	8.09
291.0	Leather shoes and chapples	3927	8.09

TABLE 1.5 (Contd.)**Distribution of Weights at Item Level Based on 1993-94 Data
Manufacturing Sector**

Group/ NIC Code	Items	Gross Value of Output (Rs. Lakh)	Weight
1	2	3	4
30	Manufacture of Basic Chemicals and Chemical Products (except products of petroleum and coal)	50188	60.65
300.2	Gases	726	0.88
300.9	Formaldehyde	1203	1.45
301.1, 2 & 3	Fertilizers	31892	38.54
301.4	Pesticides and insecticides (Soild)	2914	3.52
301.4	Pesticides and insecticides (Liquid)	4627	5.59
303.3	Dyes and colours	544	0.66
304.2	Tablets	1632	1.97
304.2	Capsules	1397	1.69
304.2	Syrups	547	0.66
305.1	Soaps	2879	3.48
305.7	Shampoos	539	0.65
309.4	Blowing agents	1288	1.56
31	Manufacture of Rubber,Plastic,Petroleum & Coal Products, Processing of Nuclear fuels	57744	54.21
310.1	Tyres for motor vehicles	21563	20.24
310.1	Tubes for motor vehicles	1331	1.25
311.1	Rubber shoes and chappals	9891	9.29
312.1	PVC Pipes	2201	2.07
312.2	Belting all types	3322	3.12
313.1	Thermocols	883	0.83

TABLE 1.5 (Contd.)**Distribution of Weights at Item Level Based on 1993-94 Data
Manufacturing Sector**

Group/ NIC Code	Items	Gross Value of Output (Rs. Lakh)	Weight
1	2	3	4
313.1	Plastic sheets	18553	17.41
32	Manufacture of Non-Metallic Mineral Products	41108	32.93
320.1	Refractory bricks	2135	1.71
320.4	Building bricks	2244	1.80
320.5	Ceramic tiles	3344	2.68
321.1	Glass sheets	7730	6.19
321.3	Bottles and jars	6509	5.21
323.1	Crockery / kitchan-ware	1332	1.07
323.2	Sanitary ware	2529	2.03
324.2	Cement	11016	8.82
327.0	Asbestos cement products	4269	3.42
33	Basic Metal and Alloy Industries	112033	89.31
330.1	Bar and rods	5140	4.10
330.1	Angle channels	3915	3.12
330.1	Billets and slabs	2592	2.07
330.1	Steel Casting	1635	1.30
330.1	Steel wire	8441	6.73
331.2	Narrow cold-rolled steel strips	21730	17.32
331.3	Stainless steel	11742	9.36
331.6	Steel sheets	7939	6.33
331.9	M.S. Pipes and tubes	34599	27.58

TABLE 1.5 (Contd.)

**Distribution of Weights at Item Level Based on 1993-94 Data
Manufacturing Sector**

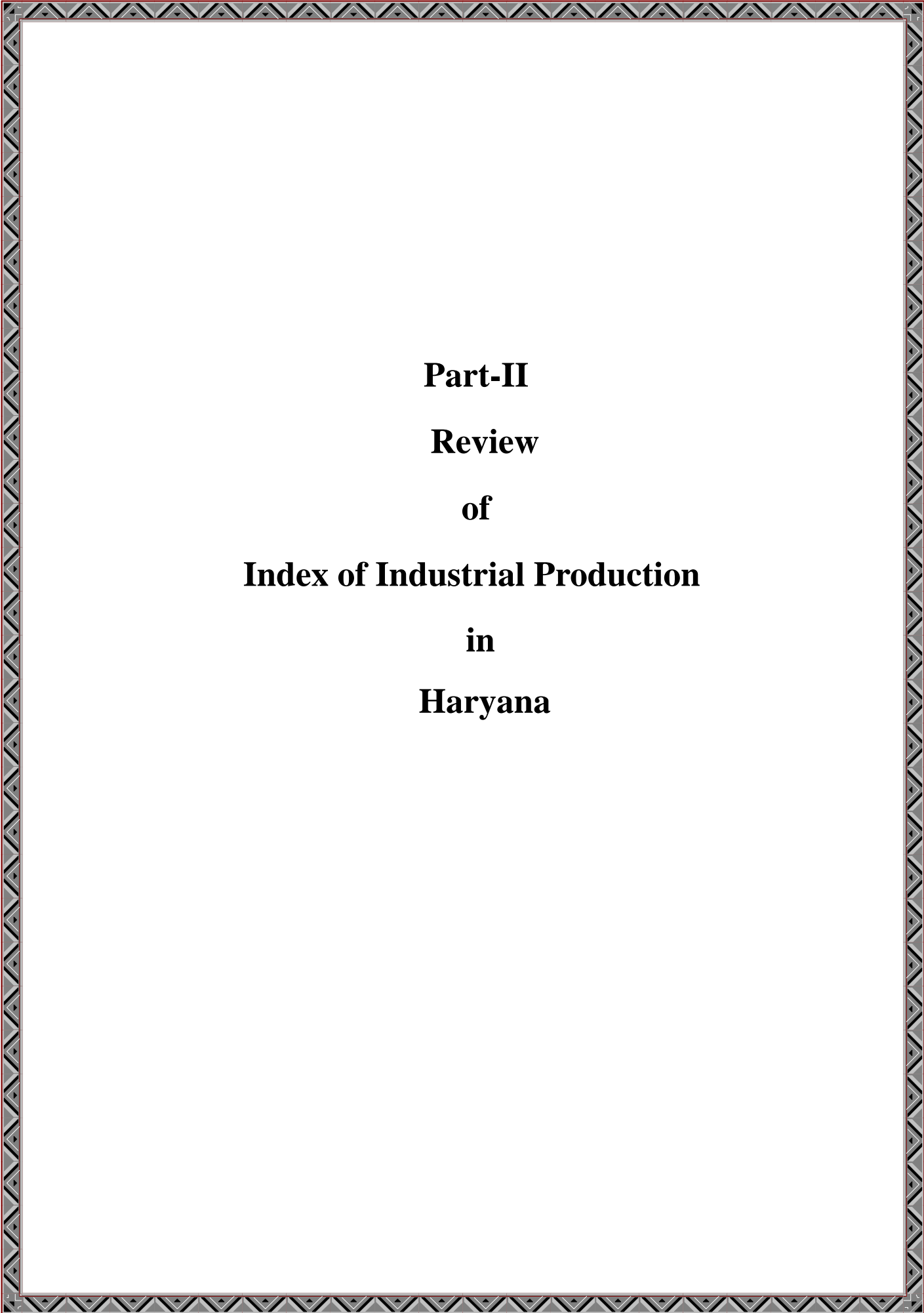
Group/ NIC Code	Items	Gross Value of Output (Rs. Lakh)	Weight
1	2	3	4
331.9	S.S. Ingot	1919	1.53
334.1	Brass Sheets and strips	7460	5.95
337.1	Ordinary casting	4921	3.92
34	Manufacture of Metal Products and Parts except Machinery and Equipment	30735	34.07
341.2	Gas cylinders	2141	2.37
341.3	Tin containers	3457	3.83
343.1	Hand tools	2002	2.22
343.3	Bolts and nuts	1074	1.19
343.3	Machine screw all types	4637	5.14
344.1	Forging and stamping	7402	8.21
346.2	Aluminium utensils	4513	5.00
346.2	Steel utensils	3831	4.25
346.2	Brass utensils	1178	1.31
346.2	Gas stove and cooking ranges	500	0.55
35-36	Manufacture of Machinery and Equipment other than Transport Equipment (Manufacture of Scientific Equipment, Photographic /Cinematographic Equipment and Watches and Clock is classified in Div. 38)	150040	146.83
350.1	Tractors	78500	76.82
350.1	Tractor parts	3384	3.31
351.7	Loaders	7163	7.01
353.9	Hydraulic press	589	0.58

TABLE 1.5 (Contd.)**Distribution of Weights at Item Level Based on 1993-94 Data
Manufacturing Sector**

Group/ NIC Code	Items	Gross Value of Output (Rs. Lakh)	Weight
1	2	3	4
354.4	Printing machines	2734	2.67
355.1	Air -conditioning plants	891	0.87
355.3	Domestic refrigerators	24080	23.56
356.1	Cranes	597	0.58
356.2	Air gas compressors	1318	1.29
356.2	Compressors	971	0.95
360.2	Transformers	1346	1.32
360.3	Switch gears and control gears	6098	5.97
360.4	Electric motors phase I & II	4910	4.81
360.4	Electric pumps	1069	1.05
361	PVC insulated wires and cables	5538	5.42
363.3	Flourescent-tubes	948	0.93
364.1	Electric fans all types	6014	5.88
364.9	Switches all types	603	0.59
367.1	Computers	1225	1.20
368.2	Electrical capacitor	501	0.49
368.5	A.C.S.R. conductors	1561	1.53
37	Manufacture of Transport Equipment and Parts	316047	225.39
374.1	Motor car	192255	137.11
374.8	Motor vehicles parts and accessories	37464	26.72

TABLE 1.5 (Concl.)**Distribution of Weights at Item Level Based on 1993-94 Data
Manufacturing Sector**

Group/ NIC Code	Items	Gross Value of Output (Rs. Lakh)	Weight
1	2	3	4
375.1	Motor cycle all types	43051	30.70
375.4	Helmets	625	0.45
375.8	Manufacture of auto part and accessories for motor cycle, scooters & three wheelers.	8556	6.10
376.1	Bicycles	15825	11.28
376.8	Bicycles parts	18271	13.03
38	Other Manufacturing Industries.	3437	11.30
380.1	Microscopes	231	0.76
380.6	Syringes all types	1874	6.16
381.1	Lenses	70	0.23
381.1	Safety glass	215	0.71
385.1	Sports goods	1047	3.44
Total		1115586	983.35



Part-II
Review
of
Index of Industrial Production
in
Haryana

REVIEW OF INDEX OF INDUSTRIAL PRODUCTION IN HARYANA 2006-07

The industry sector recorded an annual growth of 11.25 percent in 2006-07 over the previous year as the Index of Industrial Production increased from 253.44 in 2005-06 to 281.96 in 2006-07. The sector wise and group wise details of IIP are given below: -

Manufacturing Sector

The Index of Manufacturing Sector increased from 251.16 in 2005-06 to 279.49 in 2006-07 registering an annual growth of 11.28 percent over the previous year. Manufacture of machinery & equipment other than transport equipment, scientific equipment, photographic/ cinematographic equipment recorded the highest growth of 26.67 percent followed by manufacture of leather and products of leather, fur and substitute of leather recorded growth of 15.81 percent. Other manufacturing industries recorded growth of 14.70 percent, manufacture of metal products and parts except machinery and parts 13.73 percent, manufacture of transport equipment and parts 11.35 percent and electricity 10.16 percent. Manufacture of wool, silk and man made fibre textiles, manufacture of cotton textile and manufacture of rubber, plastic, petroleum and coal product, processing of nuclear fuel maintained low rate of growth of 3.69 percent 3.92 percent and 4.85 percent respectively.

Electricity Sector

The Index of Electricity Sector increased from 388.55 in 2005-06 to 428.02 in 2006-07 registering an annual growth of 10.16 percent over the previous year.

Index of Industrial Production at Major Group (2-digit level) of Manufacturing Sector

1. Manufacture of Food Products (20-21)

The food manufacturing industries carry the second largest weight of 162.15 in the Manufacturing Sector. The index of this group increased to 188.75 in 2006-07 from 177.04 in 2005-06 indicating a growth of 6.62 percent. Cake all kind exhibited the highest growth of 15.21 percent followed by rice all kind 12.72 percent, starch all kind 11.68 percent and desi ghee 7.49 percent. The Index of atta, biscuits, sugar, desi ghee, poultry & cattle feed and milk powder all kind indicated decline as compared to the previous year.

2. Manufacture of Beverages, Tobacco and Related Products (22)

Beverages, tobacco and related products industries group carry a weight of 10.30 in the Manufacturing Sector. The index of this group increased from 184.31 in 2005-06 to

197.93 in 2006-07 and recorded a growth of 7.39 percent. The highest growth of 9.40 percent was recorded by spirit all kind. During this year lowest growth of 1.24 percent was recorded by beer.

3. Manufacture of Cotton Textiles (23)

The cotton textile industries carry a weight of 34.50 in the Manufacturing Sector. The index of this group increased from 158.18 in 2005-06 to 164.38 in 2006-07 recording an increase of 3.92 percent. The index of cotton seed and cotton ginned recorded increase of 16.44 percent and 10.08 percent respectively as compared to the previous year. Cotton yarn recorded lowest growth of 0.29 percent during the year 2006-07.

4. Manufacture of Wool, Silk and Man-made Fibre Textiles (24)

The manufacture of wool, silk and man-made fibre textiles industry carries the weight of 38.24. The index of this group increased from 184.08 in 2005-06 to 190.87 in 2006-07 recording a growth of 3.69 percent. The index of shoddy/woollen yarn and carpet yarn recorded growth of 14.12 percent and 1.53 percent respectively whereas index of synthetic/polyester yarn recorded lowest growth of 0.25 percent.

5. Manufacture of Textile Products including Wearing Apparel (26)

Textile industry captured the weight of 45.87 in the Manufacturing Sector. The index of this group increased from 400.29 in 2005-06 to 438.42 in 2006-07 indicating a growth of 9.53 percent over previous year. Manufacturing of woollen carpet and readymade garments recorded growth of 17.42 and 8.68 percent respectively during 2006-07 over the previous year.

6. Manufacture of Paper and Paper Products and Printing, Publishing and Allied Industries (28)

The paper industry has been assigned the weight of 29.51 in the Manufacturing Sector. The index of this group increased to 198.00 in 2006-07 from 187.38 in 2005-06 recording growth of 5.67 percent. Manufacture of corrugated boxes and card board boxes recorded the highest growth of 17.61 percent during 2006-07 as compared to previous year. Negative growth of 1.21 percent was recorded by carton over the previous year.

7. Manufacture of Leather and Products of Leather, Fur and Substitutes of Leather (29)

The leather industry has been allotted a weight of 8.09. The index of this group rose from 225.77 in 2005-06 to 261.46 in 2006-07 registering a growth of 15.81 percent over the previous year. The leather shoes and chappals is the single product selected in this group.

8. Manufacture of Basic Chemicals and Chemical Products except Products of Petroleum and Coal (30)

The chemical and chemical products industry group carries a weight of 60.65. The index of this group increased from 187.52 in 2005-06 to 202.41 in 2006-07 which indicates a growth of 7.94 percent. The fertilizers, insecticides, pesticides, gases, medicines and soaps are the main items in this industry group. The dyes and colours industry recorded highest annual growth of 17.46 percent followed by capsules 15.90 percent, while the formaldehyde recorded negative growth of 5.77 percent during this year.

9. Manufacture of Rubber, Plastic, Petroleum and Coal Products processing of nuclear fuels (31)

The rubber, plastic, petroleum and coal products industry carries the weight of 54.21 in the Manufacturing Sector. The index of this group increased from 177.17 in 2005-06 to 185.76 in 2006-07 recording a growth of 4.85 percent. The manufacture of tyre for motor vehicles recorded highest growth of 12.74 percent. None of the items have recorded negative growth in this group.

10. Manufacture of Non-Metallic Mineral Products (32)

This industry group covers mainly the production of construction material like bricks, cement and allied products and carries a weight of 32.93. The index of this group increased from 162.00 in 2005-06 to 177.55 in 2006-07 recording a growth of 9.60 percent. Building bricks recorded the highest growth of 20.78 percent followed by ceramic tiles 16.31 percent during 2006-07 as compared to previous year. Refractory bricks have recorded negative growth of 1.34 percent.

11. Manufacture of Basic Metal and Alloys Industry (33)

Basic metal and alloys industry group carries a weight of 89.31 in the Manufacturing Sector. The index of this group increased to 190.15 in 2006-07 as compared to 172.82 in 2005-06 recording a growth of 10.03 percent. S.S. ingot recorded the highest growth of 31.29 percent within this group followed by steel casting 26.34 percent. Steel wire recorded negative growth of 4.01 percent over the previous year.

12. Manufacture of Metal Products and Parts except Machinery and equipment (34)

This industry group carries a weight of 34.07 in the Manufacturing Sector. The index of this group increased from 163.52 in 2005-06 to 185.98 in 2006-07 recording a growth of 13.73 percent. The production of forging & stamping recorded the highest growth of 23.11 percent in this industry group followed by gas cylinders 18.23 percent. The index of tin containers declined to 24.57 percent as compared to previous year.

13. Manufacture of Machinery and Equipment other than Transport Equipment etc. (35-36)

Machinery and equipment industry other than transport equipment carries the weight of 146.83 in the Manufacturing Sector. The index of this industry group increased from 169.75 in 2005-06 to 215.02 in 2006-07 recording a growth of 26.67 percent. The index of tractors recorded highest growth of 48.81 percent followed by electric fan all type 36.13 percent. The index of fluorescent tubes and electric pumps recorded negative growth rate of 17.89 and 1.71 percent respectively over the previous year.

14. Manufacture of Transport Equipment and Parts (37)

The transport equipment and parts industry carries the highest weight of 225.39 in the Manufacturing Sector. The index of this group increased to 504.05 in 2006-07 as compared to 452.66 in 2005-06 recording growth of 11.35 percent. The production of motor cycles all type recorded the highest growth of 18.53 percent followed by auto parts and accessories 15.97 percent and motor vehicle parts and accessories 15.17 percent. Helmets and bicycles recorded negative growth rates as compared to previous year.

15. Other Manufacturing Industries (38)

This group covers medical and scientific instruments and sports goods. This group carries a weight of 11.30. Index of this group increased from 344.07 in 2005-06 to 394.63 in 2006-07 recording a growth of 14.70 percent as compared to previous year.

Table No. 2.2 shows the Annual Index of Industrial Production at group level for the years 1999-00 to 2006-07 whereas the Item level Index for the same years has been given in Table No. 2.3.

Table-2.1**Annual Index of Industrial Production in Haryana at Division Level**

			Base Year- 1993-94= 100							
Division	Sector	Weight	INDEX							
			1999-2000	2000-01	2001-02	2002-03	2003-04	2004-05	2005-06	2006-07*
1	2	3	4	5	6	7	8	9	10	11
2&3	Manufacturing	983.35	161.55 (6.47)	170.85 (5.76)	179.26 (4.92)	191.21 (6.67)	209.08 (9.35)	229.65 (9.84)	251.16 (9.37)	279.49 (11.28)
4	Electricity	16.65	162.97 (36.01)	194.22 (19.17)	263.80 (35.83)	284.49 (7.84)	312.54 (9.86)	333.13 (6.59)	388.55 (16.64)	428.02 (10.16)
Total		1000.00	161.57 (6.85)	171.24 (5.99)	180.67 (5.51)	192.77 (6.70)	210.81 (9.36)	231.37 (9.75)	253.44 (9.54)	281.96 (11.25)

* Provisional

Note :- Figures in brackets are percentage increase / decrease over the previous year.

G-2.1 Index of Industrial Production in Haryana at Sector level (Base Year 1993-94)

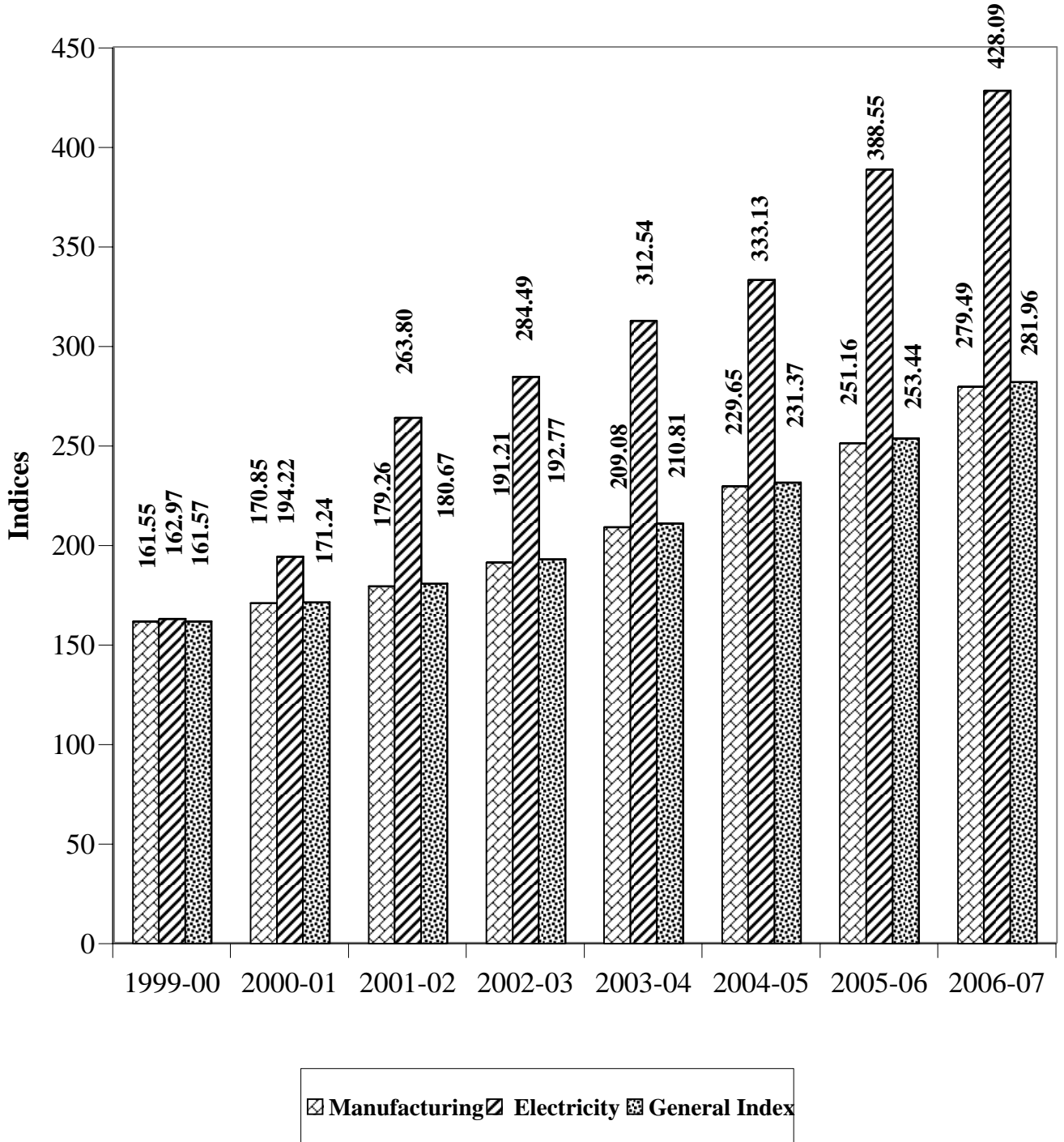


Table-2.2 (Contd)

Annual Index of Industrial Production in Haryana at Group Level

Base Year-1993-94=100											
Sr. No.	Industrial Group	NIC Code 1987	Weight	INDEX							
				1999-00	2000-01	2001-02	2002-03	2003-04	2004-05	2005-06	2006-07*
1	2	3	4	5	6	7	8	9	10	11	12
1	Manufacture of food products	20-21	162.15	130.32 (5.67)	138.69 (6.42)	146.10 (5.34)	155.13 (6.18)	165.40 (6.62)	166.92 (0.91)	177.04 (6.07)	188.75 (6.62)
2	Manufacture of beverages, Tobacco and related products	22	10.30	101.93 (0.63)	105.30 (3.31)	112.93 (7.25)	127.35 (12.77)	143.84 (12.95)	152.49 (6.01)	184.31 (20.86)	197.93 (7.39)
3	Manufacture of cotton textiles	23	34.50	128.80 (4.16)	133.96 (4.01)	120.76 (-9.85)	125.74 (4.12)	137.11 (9.04)	147.38 (7.49)	158.18 (7.33)	164.38 (3.92)
4	Manufacture of wool,silk and man-made fibre textiles	24	38.24	149.86 (8.81)	158.65 (5.87)	164.62 (3.76)	170.01 (3.27)	176.22 (3.65)	180.25 (2.29)	184.08 (2.13)	190.87 (3.69)
5	Manufacture of textiles products (including wearing apparel)	26	45.87	177.57 (9.82)	196.82 (10.84)	218.52 (11.03)	257.51 (17.84)	303.57 (17.89)	337.54 (11.19)	400.29 (18.59)	438.42 (9.53)
6	Manufacture of paper and paper products and printing, publishing and allied industries	28	29.51	145.80 (5.68)	153.10 (5.01)	160.48 (4.82)	166.62 (3.83)	171.08 (2.68)	172.48 (0.82)	187.38 (8.64)	198.00 (5.67)
7	Manufacture of leather and products of leather,fur and substitutes of leather	29	8.09	144.44 (5.40)	155.56 (7.70)	170.37 (9.52)	181.48 (6.52)	192.59 (6.12)	198.81 (3.23)	225.77 (13.56)	261.46 (15.81)
8	Manufacture of basic chemicals and chemical products (except products of petroleum and coal)	30	60.65	156.80 (5.26)	164.72 (5.05)	167.59 (1.74)	171.22 (2.17)	173.53 (1.35)	173.22 (-0.18)	187.52 (8.25)	202.41 (7.94)
9	Manufacture of rubber,plastic, petroleum and coal products, processing of nuclear fuels	31	54.21	147.18 (6.31)	156.19 (6.12)	161.06 (3.12)	167.67 (4.10)	174.32 (3.97)	173.09 (-0.71)	177.17 (2.36)	185.76 (4.85)
10	Manufacture of Non-metallic mineral products	32	32.93	127.30 (3.68)	133.15 (4.60)	138.43 (3.97)	143.29 (3.51)	149.30 (4.19)	146.34 (-1.99)	162.00 (10.70)	177.55 (9.60)
11	Basic metal and alloy industries	33	89.31	122.89 (3.82)	127.95 (4.12)	132.00 (3.17)	138.10 (4.62)	144.22 (4.43)	159.63 (10.68)	172.82 (8.26)	190.15 (10.03)
12	Manufacture of metal products and parts except machinery and equipment	34	34.07	126.21 (6.27)	133.68 (5.92)	140.94 (5.43)	145.61 (3.31)	152.55 (4.77)	152.79 (0.16)	163.52 (7.03)	185.98 (13.73)

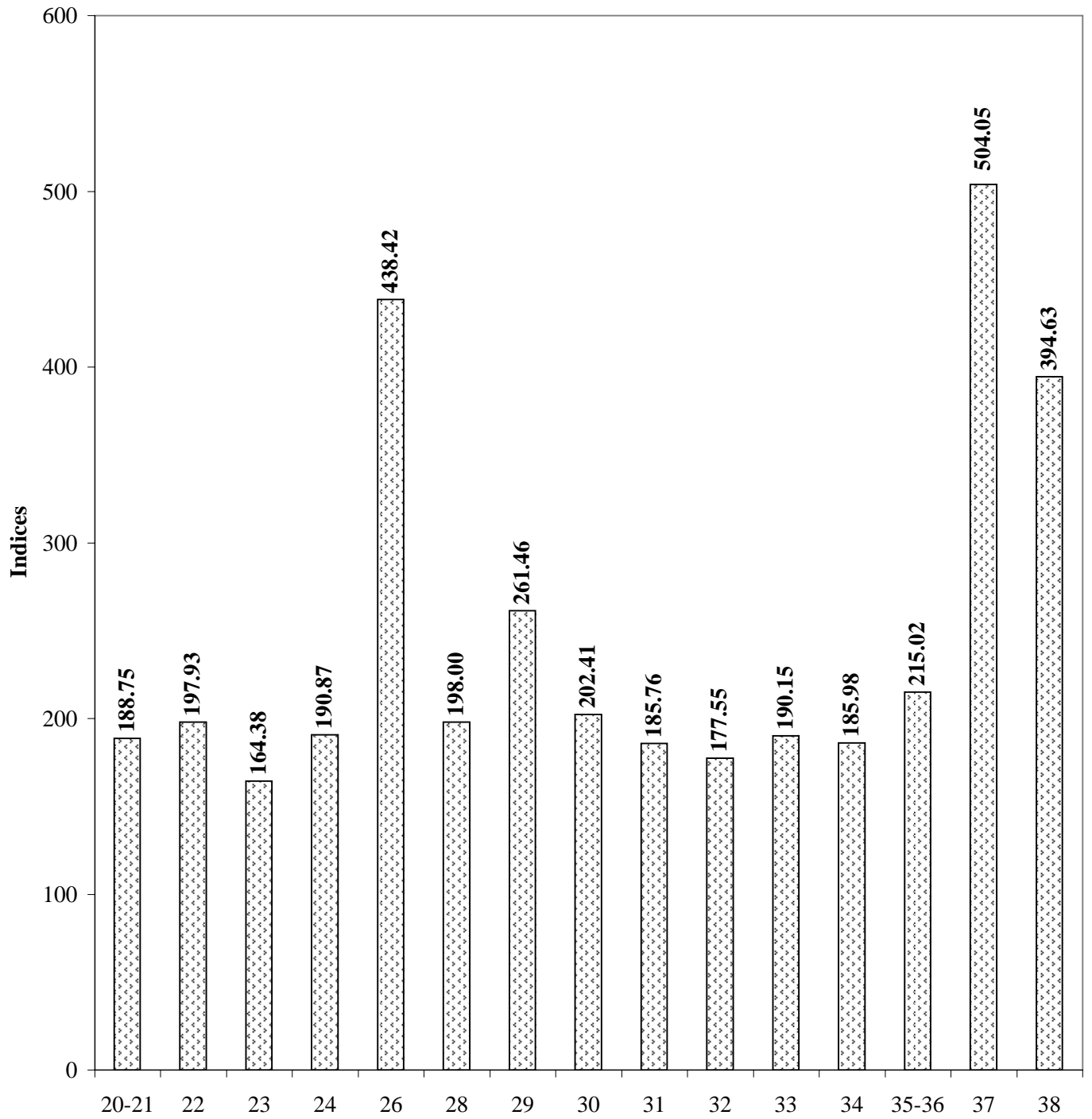
Table-2.2 (Concl'd)**Annual Index of Industrial Production in Haryana at Group Level**

Base Year-1993-94=100											
Sr. No.	Industrial Group	NIC Code	Weight	INDEX							
				1999-00	2000-01	2001-02	2002-03	2003-04	2004-05	2005-06	2006-07*
1	2	3	4	5	6	7	8	9	10	11	12
13	Manufacture of machinery and equipment other than transport equipment, scientific equipment, photographic/cinematographic equipments	35-36	146.83	152.72 (3.15)	159.31 (4.32)	156.99 (-1.46)	158.12 (0.72)	134.69 (-14.82)	148.19 (10.02)	169.75 (14.55)	215.02 (26.67)
14	Manufacture of transport equipment and parts	37	225.39	229.59 (8.88)	242.88 (5.79)	264.26 (8.80)	289.10 (9.40)	353.36 (22.23)	416.33 (17.82)	452.66 (8.73)	504.05 (11.35)
15	Other manufacturing Industries	38	11.30	156.05 (11.43)	175.37 (12.38)	191.43 (9.16)	235.89 (23.23)	257.63 (9.22)	289.19 (12.25)	344.07 (18.98)	394.63 (14.70)
	Division 2 & 3 Manufacturing		983.35	161.55 (6.47)	170.85 (5.76)	179.26 (4.92)	191.21 (6.67)	209.08 (9.35)	229.65 (9.84)	251.16 (9.37)	279.49 (11.28)
	Division 4 Electricity	40	16.65	162.97 (36.01)	194.22 (19.17)	263.80 (35.83)	284.49 (7.84)	312.54 (9.86)	333.13 (6.59)	388.55 (16.64)	428.02 (10.16)
General Index			1000.00	161.57 (6.85)	171.24 (5.99)	180.67 (5.51)	192.77 (6.70)	210.81 (9.36)	231.37 (9.75)	253.44 (9.54)	281.96 (11.25)

* Provisional

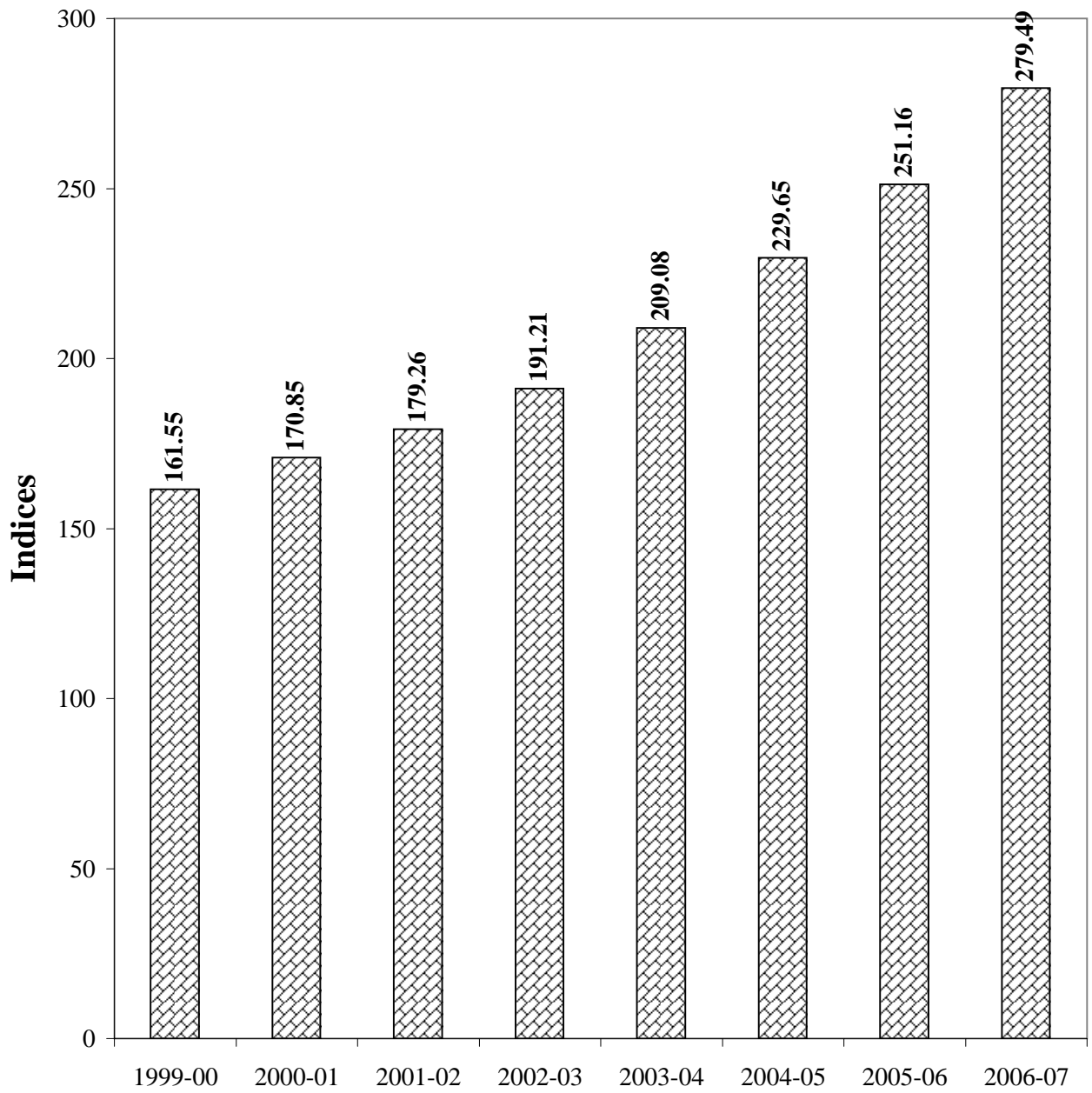
Note: Figures in the brackets are percentage increase /decrease over the previous year.

**G-2.2 Index of Industrial Production in Haryana
Manufacturing Sector 2006-07 at 2 digit level
Base Year 1993-94**



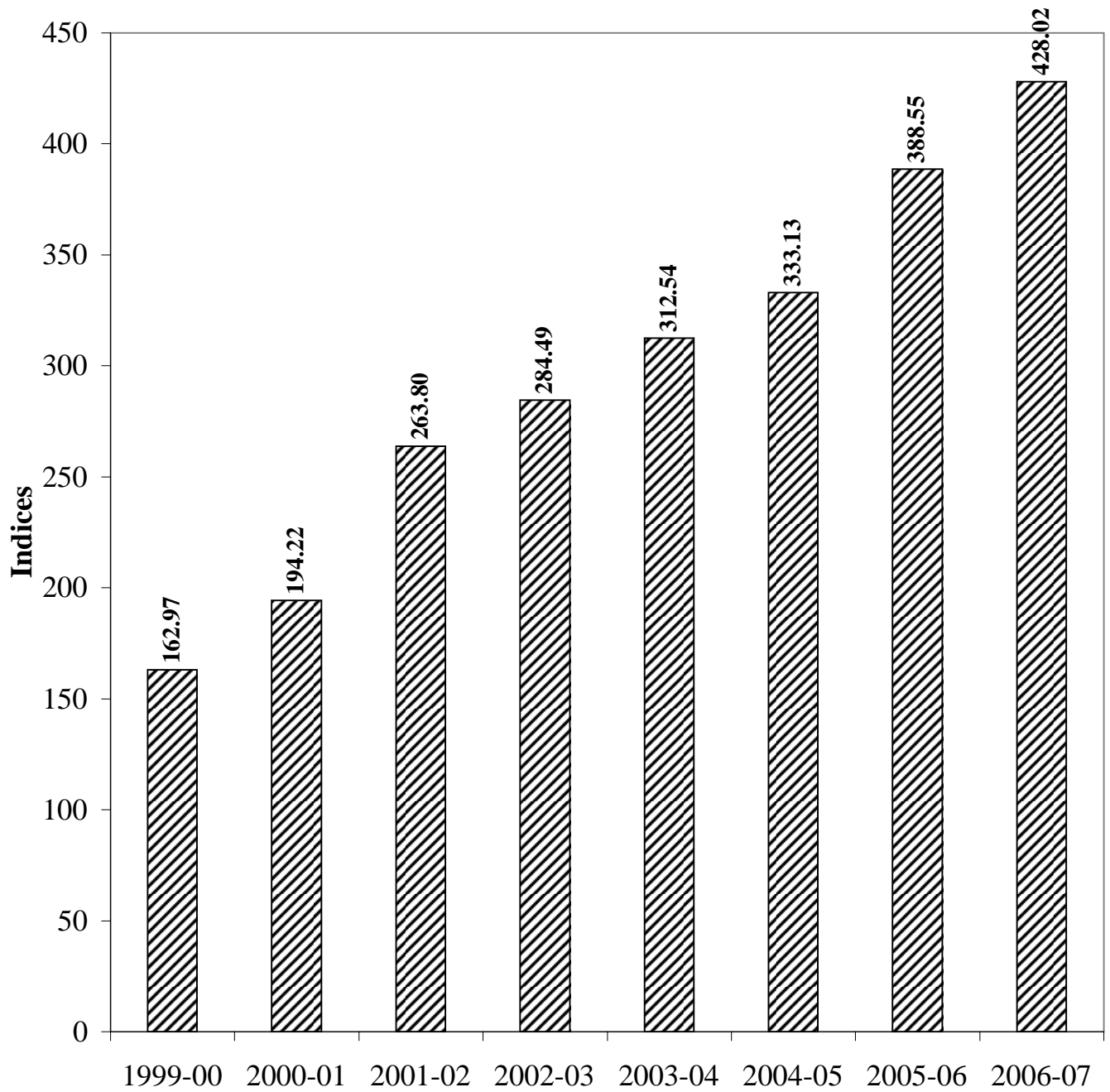
Manufacturing Sector

**G-2.3 Index of Industrial Production in Haryana
Manufacturing Sector
Base Year 1993-94**



☒ Manufacturing Sector

**G-2.4 Index of Industrial Production in Haryana
Electricity Sector
Base Year 1993-94**



Electricity Sector

**G-2.5 General Index of Industrial Production in
Haryana
Base year 1993-94**

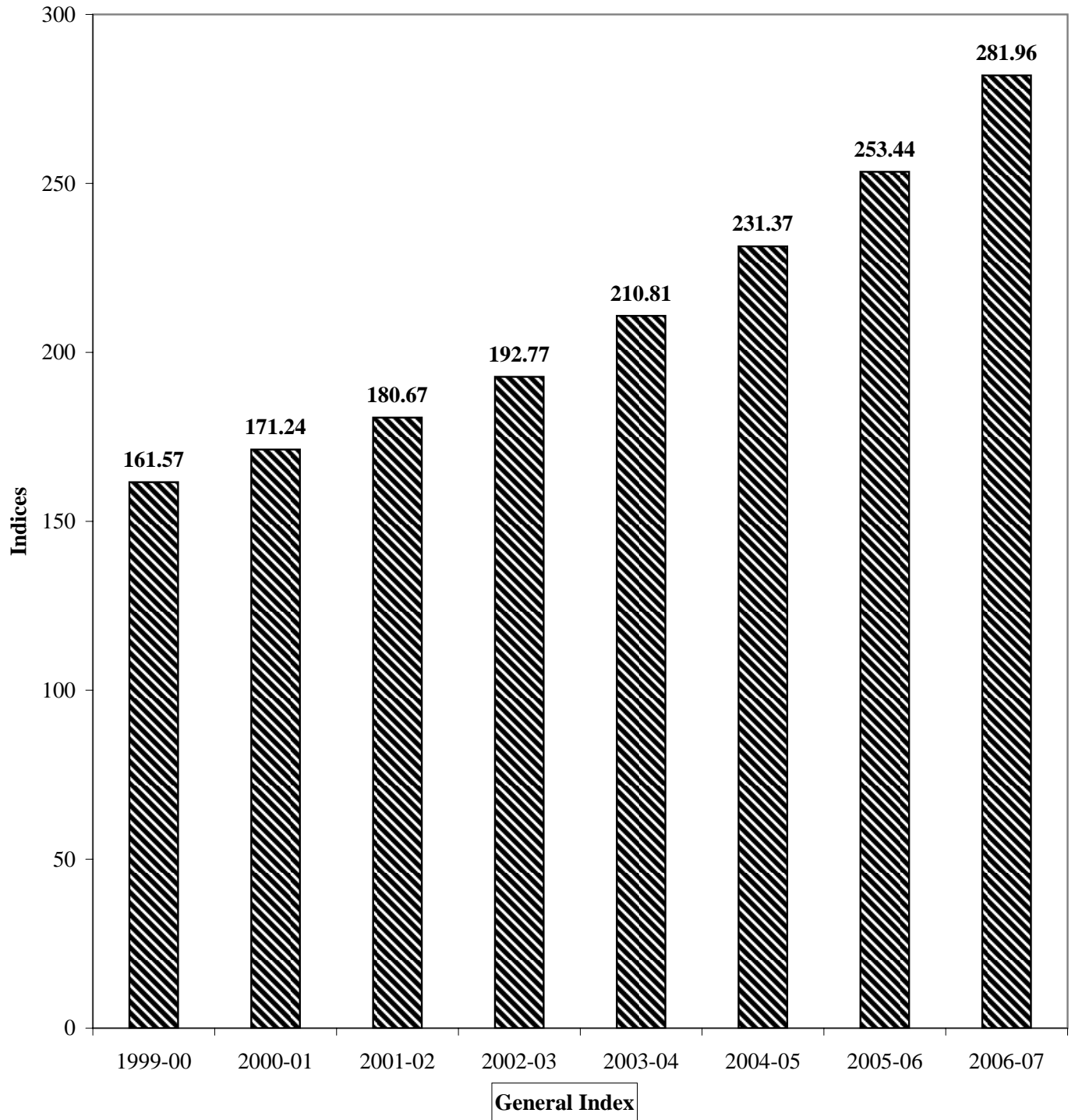


TABLE 2.3 (Contd)

Annual Index of Industrial Production in Haryana at Item Level

			Base Year- 1993-94=100							
Group/ NIC Code	Items	Weight	Index							
			1999-2000	2000-01	2001-02	2002-03	2003-04	2004-05	2005-06	2006-07*
1	2	3	4	5	6	7	8	9	10	11
20-21	Manufacture of Food Products	162.15	130.32 (5.67)	138.69 (6.42)	146.10 (5.34)	155.13 (6.18)	165.40 (6.62)	166.92 (0.91)	177.04 (6.07)	188.75 (6.62)
201.1	Milk powder all kind	2.55	105.15 (7.42)	123.51 (17.46)	118.65 (-3.93)	140.87 (18.73)	134.62 (-4.43)	132.82 (-1.34)	128.40 (-3.33)	116.80 (-9.03)
201.3	Desi ghee	4.23	269.62 (35.59)	206.70 (-23.34)	255.84 (23.77)	312.92 (22.31)	257.28 (-17.78)	234.88 (-8.71)	224.65 (-4.36)	241.48 (7.49)
201.4	Milk all kind	3.63	155.68 (-10.06)	185.98 (19.46)	193.82 (4.22)	235.16 (21.33)	258.74 (10.03)	258.31 (-0.17)	261.35 (1.18)	269.04 (2.94)
204.1	Atta	4.51	162.22 (21.67)	177.78 (9.59)	184.44 (3.75)	186.67 (1.21)	188.89 (1.19)	188.89 (0.00)	191.12 (1.18)	174.34 (-8.78)
204.2	Rice all kind	76.37	116.91 (2.79)	124.52 (6.51)	127.48 (2.38)	134.88 (5.81)	152.22 (12.85)	152.73 (0.34)	169.87 (11.22)	191.48 (12.72)
204.2	Bran all kind	3.36	94.12 (8.11)	107.06 (13.75)	120.00 (12.09)	178.82 (49.02)	202.35 (13.16)	219.19 (8.32)	247.29 (12.82)	254.28 (2.83)
204.3	Dal all kind	2.20	47.83 (-71.79)	34.78 (-27.28)	39.13 (12.51)	30.43 (-22.23)	21.74 (-28.56)	24.92 (14.63)	28.70 (15.17)	29.70 (3.46)
205.2	Biscuits	5.64	396.00 (23.75)	448.00 (13.13)	444.00 (-0.89)	396.00 (-10.81)	204.00 (-48.48)	206.35 (1.15)	164.47 (-20.30)	144.20 (-12.32)
206	Sugar	21.77	109.61 (7.36)	124.02 (13.15)	136.04 (9.69)	142.04 (4.41)	162.46 (14.37)	156.43 (-3.71)	139.89 (-10.57)	135.12 (-3.41)
210	Vanaspati ghee	4.54	52.00 (-45.83)	60.00 (15.38)	88.00 (46.67)	96.00 (9.09)	128.00 (33.33)	164.64 (28.63)	212.27 (28.93)	218.03 (2.71)
211.2	Edible oil	21.72	142.22 (12.28)	151.11 (6.25)	164.44 (8.82)	175.56 (6.76)	226.67 (29.11)	242.16 (6.83)	262.43 (8.37)	275.65 (5.04)
211.8	Cake all kind	8.97	85.93 (7.55)	93.47 (8.77)	101.01 (8.07)	110.05 (8.96)	93.97 (-14.61)	74.43 (-20.79)	90.08 (21.03)	103.78 (15.21)
217.1&2	Poultry and cattle feed	1.78	146.97 (-11.01)	98.48 (-32.99)	80.30 (-18.46)	118.18 (47.17)	81.82 (-30.76)	81.91 (0.11)	95.02 (16.01)	92.39 (-2.77)
218	Starch all kind	0.88	113.33 (0.00)	93.33 (-17.65)	66.67 (-32.88)	40.00 (-40.00)	73.33 (83.32)	112.37 (53.24)	156.65 (39.41)	174.95 (11.68)
22	Manufacture of Beverage, Tabacco and Related Products	10.30	101.93 (0.63)	105.30 (3.31)	112.93 (7.25)	127.35 (12.77)	143.84 (12.95)	152.49 (6.01)	184.31 (20.86)	197.93 (7.39)
220	Spirit all kind	4.41	63.10 (7.97)	64.35 (1.98)	73.75 (14.61)	77.21 (4.69)	96.35 (24.79)	98.62 (2.36)	117.94 (19.59)	129.03 (9.40)
222.1	Beer	1.39	9.56 (44.19)	13.61 (42.36)	23.66 (73.84)	30.16 (27.47)	42.84 (42.04)	51.32 (19.80)	64.11 (24.92)	64.90 (1.24)

TABLE 2.3 (Contd)

Annual Index of Industrial Production in Haryana at Item Level

Group/ NIC Code	Items	Weight	Base Year- 1993-94=100							
			Index							
			1999-2000	2000-01	2001-02	2002-03	2003-04	2004-05	2005-06	2006-07*
1	2	3	4	5	6	7	8	9	10	11
222.3	Malt	1.90	164.00 (-7.87)	174.00 (6.10)	170.00 (-2.30)	212.00 (24.70)	216.00 (1.89)	230.58 (6.75)	279.26 (21.11)	298.83 (7.01)
223	Country liquor	1.52	195.82 (6.19)	198.82 (1.53)	214.17 (7.72)	241.66 (12.83)	279.59 (15.69)	298.46 (6.75)	361.47 (21.11)	386.81 (7.01)
224	Soft drinks & syrups	1.08	138.05 (-5.55)	138.05 (0.00)	144.94 (4.99)	147.34 (1.65)	149.76 (1.64)	159.87 (6.75)	193.62 (21.11)	207.19 (7.01)
23	Manufacture of Cotton Textiles	34.50	128.80 (4.16)	133.96 (4.01)	120.76 (-9.85)	125.74 (4.12)	137.11 (9.04)	147.38 (7.49)	158.18 (7.33)	164.38 (3.92)
230	Cotton ginned	6.73	80.49 (3.13)	85.37 (6.06)	41.46 (-51.43)	41.46 (0.00)	65.85 (58.83)	61.17 (-7.11)	51.20 (-16.30)	56.36 (10.08)
230	Cotton pressed (Kapas)	10.64	124.31 (4.68)	131.94 (6.14)	84.03 (-36.31)	81.25 (-3.31)	93.06 (14.53)	95.49 (2.61)	88.78 (-7.03)	96.00 (8.13)
230	Cotton seeds	2.35	138.46 (-2.71)	150.00 (8.33)	173.08 (15.39)	211.54 (22.22)	192.31 (-9.09)	225.99 (17.51)	237.45 (5.07)	276.48 (16.44)
235.1	Cotton yarn	14.78	152.50 (5.17)	155.00 (1.64)	175.00 (12.90)	182.50 (4.28)	192.50 (5.48)	211.49 (9.86)	244.24 (15.49)	244.96 (0.29)
24	Manufacture of Wool, Silk and Man-made Fibre Textiles	38.24	149.86 (8.81)	158.65 (5.87)	164.62 (3.76)	170.01 (3.27)	176.22 (3.65)	180.25 (2.29)	184.08 (2.13)	190.87 (3.69)
242.1	Shoddy / woollen yarn	6.87	146.79 (18.73)	157.29 (7.15)	166.41 (5.80)	187.29 (12.55)	221.22 (18.12)	243.30 (9.98)	251.91 (3.54)	287.49 (14.12)
242.1	Carpet yarn	2.08	105.13 (3.25)	102.37 (-2.62)	111.36 (8.79)	105.18 (-5.55)	79.66 (-24.26)	80.34 (0.85)	81.82 (1.84)	83.07 (1.53)
247.2	Synthetic / Polyester yarn	29.29	153.76 (7.09)	162.97 (5.99)	167.98 (3.07)	170.56 (1.53)	172.52 (1.15)	172.55 (0.02)	175.43 (1.67)	175.86 (0.25)
26	Manufacture of Textile Products (including wearing apparel)	45.87	177.57 (9.82)	196.82 (10.84)	218.52 (11.03)	257.51 (17.84)	303.57 (17.89)	337.54 (11.19)	400.29 (18.59)	438.42 (9.53)
263.6	Woollen carpets	10.47	138.23 (7.15)	150.85 (9.13)	159.73 (5.89)	174.06 (8.97)	181.23 (4.12)	168.85 (-6.83)	170.23 (0.82)	199.88 (17.42)
265	Readymade garments	35.40	189.20 (10.41)	210.42 (11.22)	235.91 (12.11)	282.19 (19.62)	339.75 (20.40)	387.43 (14.03)	468.33 (20.88)	508.98 (8.68)
28	Manufacture of Paper and paper Products and Printing, Publishing and Allied industries	29.51	145.80 (5.68)	153.10 (5.01)	160.48 (4.82)	166.62 (3.83)	171.08 (2.68)	172.48 (0.82)	187.38 (8.64)	198.00 (5.67)
280.2	Paper all kind	22.77	129.52 (2.25)	140.00 (8.09)	142.86 (2.04)	147.62 (3.33)	161.90 (9.67)	162.83 (0.57)	172.58 (5.99)	178.11 (3.20)

TABLE 2.3 (Contd)

Annual Index of Industrial Production in Haryana at Item Level

		Base Year- 1993-94=100								
Group/ NIC Code	Items	Weight	Index							
			1999-2000	2000-01	2001-02	2002-03	2003-04	2004-05	2005-06	2006-07*
1	2	3	4	5	6	7	8	9	10	11
281.1, 2 & 3	Corrugated boxes and card -board boxes.	2.12	161.85 (8.99)	173.29 (7.07)	286.48 (65.32)	313.22 (9.33)	261.91 (-16.38)	370.67 (41.53)	460.65 (24.27)	541.77 (17.61)
281.9	Carton	1.76	350.89 (32.24)	319.43 (-8.97)	324.20 (1.49)	327.45 (1.00)	286.62 (-12.47)	162.11 (-43.44)	162.11 (0.00)	160.14 (-1.21)
285.3	Books	1.47	84.65 (-2.81)	90.48 (6.89)	21.42 (-76.33)	27.09 (26.47)	22.71 (-16.17)	23.38 (2.95)	25.40 (8.64)	26.84 (5.65)
285.3	Periodicals and journals	1.39	192.94 (-3.19)	192.44 (-0.26)	196.75 (2.24)	198.27 (0.77)	193.36 (-2.47)	199.06 (2.95)	216.30 (8.66)	228.52 (5.65)
29	Manufacture of Leather and Products of Leather, Fur and Substitutes of Leather	8.09	144.44 (5.40)	155.56 (7.70)	170.37 (9.52)	181.48 (6.52)	192.59 (6.12)	198.81 (3.23)	225.77 (13.56)	261.46 (15.81)
291	Leather shoes and chapples	8.09	144.44 (5.40)	155.56 (7.70)	170.37 (9.52)	181.48 (6.52)	192.59 (6.12)	198.81 (3.23)	225.77 (13.56)	261.46 (15.81)
30	Manufacture of Basic Chemicals and Chemical Products except Products of Petroleum and Coal	60.65	156.80 (5.26)	164.72 (5.05)	167.59 (1.74)	171.22 (2.17)	173.53 (1.35)	173.22 (-0.18)	187.52 (8.25)	202.41 (7.94)
300.2	Gases	0.88	90.80 (25.03)	96.55 (6.33)	178.69 (85.08)	156.89 (-12.20)	159.13 (1.43)	195.24 (22.69)	195.24 (0.00)	195.24 (0.00)
300.9	Formaldehyde	1.45	58.48 (-13.49)	66.51 (13.73)	67.53 (1.53)	61.26 (-9.28)	62.21 (1.55)	66.87 (7.50)	59.78 (-10.60)	56.33 (-5.77)
301.1, 2 & 3	Fertilizers	38.54	151.72 (2.56)	165.69 (9.21)	162.24 (-2.08)	164.14 (1.17)	143.62 (-12.50)	132.24 (-7.92)	124.58 (-5.80)	131.50 (5.56)
301.4	Pesticides and insecticides (Solid)	3.52	247.99 (32.98)	250.94 (1.19)	267.47 (6.59)	296.94 (11.02)	327.46 (10.28)	344.05 (5.07)	374.73 (8.92)	424.09 (13.17)
301.4	Pesticides and insecticides (Liquid)	5.59	99.48 (-11.13)	78.33 (-21.26)	82.12 (4.84)	96.58 (17.61)	114.05 (18.09)	170.24 (49.27)	214.11 (25.77)	232.00 (8.35)
303.3	Dyes and colours	0.66	245.61 (-32.46)	80.55 (-67.20)	72.92 (-9.47)	79.25 (8.68)	91.69 (15.70)	43.93 (-52.08)	66.91 (-52.31)	78.59 (17.46)
304.2	Tablets	1.97	151.13 (-2.88)	152.53 (0.93)	160.06 (4.94)	143.64 (-10.26)	174.63 (21.57)	187.99 (7.65)	233.48 (24.20)	243.73 (4.39)
304.2	Capsules	1.69	269.73 (55.96)	288.63 (7.01)	248.20 (-14.01)	250.16 (0.79)	371.04 (48.32)	545.23 (46.95)	797.90 (46.34)	924.76 (15.90)
304.2	Syrups	0.66	349.67 (5.25)	276.91 (-20.81)	212.20 (-23.37)	345.32 (62.73)	455.77 (31.98)	495.90 (8.80)	672.97 (35.71)	681.25 (1.23)
305.1	Soaps	3.48	148.26 (17.20)	184.04 (24.13)	247.93 (34.72)	230.16 (-7.17)	307.08 (33.42)	182.74 (-40.49)	183.05 (0.17)	199.78 (9.14)

TABLE 2.3 (Contd)

Annual Index of Industrial Production in Haryana at Item Level

Group/ NIC Code	Items	Weight	Base Year- 1993-94=100							
			Index							
			1999-2000	2000-01	2001-02	2002-03	2003-04	2004-05	2005-06	2006-07*
1	2	3	4	5	6	7	8	9	10	11
305.7	Shampoos.	0.65	157.80 (17.94)	224.00 (41.95)	224.00 (0.00)	211.00 (-5.80)	395.10 (87.25)	571.91 (44.75)	783.51 (37.00)	836.62 (6.78)
309.4	Blowing agents	1.56	194.74 (0.00)	187.20 (-3.87)	207.97 (11.10)	206.62 (-0.65)	199.37 (-3.51)	206.49 (3.57)	227.09 (9.98)	244.29 (7.57)
31	Manufacture of Rubber, Plastic, Petroleum and Coal Products, Processing of Nuclear Fuels	54.21	147.18 (6.31)	156.19 (6.12)	161.06 (3.12)	167.67 (4.10)	174.32 (3.97)	173.09 (-0.71)	177.17 (2.36)	185.76 (4.85)
310.1	Tyres for motor vehicles	20.24	181.05 (9.38)	191.97 (6.03)	189.21 (-1.44)	173.03 (-8.55)	180.53 (4.33)	166.40 (-7.83)	154.92 (-6.90)	174.65 (12.74)
310.1	Tubes for motor vehicles	1.25	168.42 (6.79)	170.42 (1.19)	156.99 (-7.88)	145.19 (-7.52)	171.69 (18.25)	173.32 (0.95)	180.93 (4.39)	180.93 (0.00)
311.1, 2 & 3	Rubber shoes and chappals	9.29	125.71 (2.32)	142.86 (13.64)	164.44 (15.11)	230.48 (40.16)	222.54 (-3.44)	183.22 (-17.67)	195.84 (6.89)	196.19 (0.18)
312.1	PVC Pipes	2.07	54.26 (3.00)	50.20 (-7.48)	69.88 (39.20)	77.83 (11.38)	57.18 (-26.52)	61.77 (8.03)	64.48 (4.39)	66.79 (3.59)
312.2	Belting all types	3.12	155.81 (10.52)	155.81 (0.00)	236.39 (51.72)	260.09 (10.02)	248.17 (-4.58)	295.45 (19.05)	308.42 (4.39)	319.49 (3.59)
313.1	Thermocols	0.83	131.37 (-6.51)	131.37 (0.00)	200.98 (52.99)	221.24 (10.08)	325.82 (47.27)	445.66 (36.78)	465.22 (4.39)	481.92 (3.59)
313.1	Plastic sheets	17.41	127.99 (3.60)	134.54 (5.12)	122.27 (-9.12)	121.11 (-0.94)	135.02 (11.48)	153.75 (13.87)	168.94 (9.88)	169.52 (0.34)
32	Manufacture of Non - Metallic Mineral Products	32.93	127.30 (3.68)	133.15 (4.60)	138.43 (3.97)	143.29 (3.51)	149.30 (4.19)	146.34 (-1.99)	162.00 (10.70)	177.55 (9.60)
320.1	Refractory bricks	1.71	106.60 (-19.86)	96.23 (-9.73)	239.62 (149.01)	244.34 (1.97)	254.72 (4.25)	254.72 (0.00)	254.72 (0.00)	251.32 (-1.34)
320.4	Building bricks	1.80	313.36 (50.36)	294.69 (-5.96)	255.13 (-13.42)	242.48 (-4.95)	254.51 (4.97)	254.47 (-0.02)	360.27 (41.58)	435.13 (20.78)
320.5	Ceramic tiles	2.68	294.41 (-5.27)	330.44 (12.24)	355.49 (7.58)	356.69 (0.34)	356.69 (0.00)	311.53 (-12.66)	348.89 (11.99)	405.81 (16.31)
321.1	Glass sheets	6.19	103.00 (11.42)	116.92 (13.51)	129.77 (10.99)	135.13 (4.13)	132.16 (-2.20)	127.80 (-3.30)	140.07 (9.60)	151.75 (8.34)
321.3	Bottles and jars	5.21	107.48 (11.97)	111.33 (3.58)	115.59 (3.83)	143.57 (24.21)	163.57 (13.93)	158.17 (-3.30)	173.36 (9.60)	187.81 (8.34)
323.1	Crockery / kitchen-ware	1.07	362.94 (-2.06)	407.94 (12.40)	323.53 (-20.69)	291.18 (-10.00)	291.47 (0.10)	318.07 (9.13)	318.07 (0.00)	338.21 (6.33)
323.2	Sanitary ware	2.03	99.38 (0.44)	103.63 (4.28)	96.77 (-6.62)	89.57 (-7.44)	89.74 (0.19)	91.71 (2.20)	100.75 (9.86)	102.82 (2.05)

TABLE 2.3 (Contd)

Annual Index of Industrial Production in Haryana at Item Level

		Base Year- 1993-94=100								
Group/ NIC Code	Items	Weight	Index							
			1999-2000	2000-01	2001-02	2002-03	2003-04	2004-05	2005-06	2006-07*
1	2	3	4	5	6	7	8	9	10	11
324.2	Cement	8.82	41.31 (-19.05)	37.01 (-10.41)	25.23 (-31.83)	24.86 (-1.47)	25.42 (2.25)	27.17 (6.88)	28.42 (4.60)	37.79 (32.98)
327	Asbestos cement products	3.42	147.54 (3.45)	154.10 (4.45)	165.57 (7.44)	178.69 (7.92)	198.36 (11.00)	207.31 (4.51)	219.25 (5.76)	211.77 (-3.41)
33	Basic Metal and Alloy Industries	89.31	122.89 (3.82)	127.95 (4.12)	132.00 (3.17)	138.10 (4.62)	144.22 (4.43)	159.63 (10.68)	172.82 (8.26)	190.15 (10.03)
330.1	Bar and rods	4.10	103.18 (-1.54)	100.15 (-2.94)	116.25 (16.08)	109.27 (-6.00)	117.19 (7.25)	121.05 (3.29)	130.95 (8.18)	142.61 (8.91)
330.1	Angle channels	3.12	205.29 (47.67)	205.29 (0.00)	171.03 (-16.69)	218.17 (27.56)	218.17 (0.00)	225.35 (3.29)	243.78 (8.18)	265.50 (8.91)
330.1	Billets and slabs	2.07	93.98 (15.00)	103.12 (9.73)	70.95 (-31.20)	76.28 (7.51)	121.50 (59.28)	127.77 (5.16)	134.25 (5.08)	137.11 (2.13)
330.1	Steel casting	1.30	210.00 (10.82)	206.80 (-1.52)	187.50 (-9.33)	134.20 (-28.43)	190.60 (42.03)	205.85 (8.00)	228.50 (11.00)	288.70 (26.34)
330.1	Steel wire	6.73	88.82 (-15.61)	87.58 (-1.40)	76.92 (-12.17)	83.00 (7.90)	85.60 (3.13)	109.64 (28.08)	122.92 (12.11)	117.99 (-4.01)
331.2	Narrow cold-rolled steel strips	17.32	166.05 (10.03)	185.65 (11.80)	211.02 (13.67)	232.43 (10.14)	233.63 (0.52)	214.69 (-8.11)	241.98 (12.71)	272.73 (12.71)
331.3	Stainless steel	9.36	112.94 (0.00)	141.57 (25.35)	161.96 (14.40)	158.82 (-1.94)	194.51 (22.47)	200.91 (3.29)	217.34 (8.18)	236.71 (8.91)
331.6	Steel sheets	6.33	99.63 (0.00)	106.54 (6.94)	96.62 (-9.31)	105.27 (8.95)	105.27 (0.00)	108.73 (3.29)	117.63 (8.18)	128.11 (8.91)
331.9	M.S. Pipes and tubes	27.58	119.42 (1.01)	114.06 (-4.49)	112.64 (-1.24)	112.70 (0.05)	107.97 (-4.20)	110.17 (2.04)	113.71 (3.21)	119.03 (4.68)
331.9	S.S.Ingot	1.53	114.84 (-11.48)	75.57 (-34.20)	89.07 (17.86)	94.41 (6.00)	123.94 (31.28)	169.28 (36.58)	205.11 (21.16)	269.30 (31.29)
334.1	Brass sheet and strips	5.95	95.80 (-1.19)	100.63 (5.04)	95.86 (-4.74)	99.61 (3.91)	99.40 (-0.21)	310.03 (211.89)	317.11 (2.28)	360.51 (13.69)
337.1	Ordinary casting	3.92	62.19 (-1.36)	58.57 (-5.82)	70.02 (19.55)	73.92 (5.57)	89.62 (21.24)	91.16 (1.72)	109.14 (19.73)	134.25 (23.00)
34	Manufacture of Metal Products and Parts except Machinery and Equipments	34.07	126.21 (6.27)	133.68 (5.92)	140.94 (5.43)	145.61 (3.31)	152.55 (4.77)	152.79 (0.16)	163.52 (7.03)	185.98 (13.73)
341.2	Gas cylinders	2.37	226.63 (-16.60)	247.28 (9.11)	173.91 (-29.67)	160.33 (-7.81)	219.84 (37.12)	227.27 (3.38)	181.70 (-20.05)	214.82 (18.23)

TABLE 2.3 (Contd)

Annual Index of Industrial Production in Haryana at Item Level

		Base Year- 1993-94=100								
Group/ NIC Code	Items	Weight	Index							
			1999-2000	2000-01	2001-02	2002-03	2003-04	2004-05	2005-06	2006-07*
1	2	3	4	5	6	7	8	9	10	11
341.3	Tin containers	3.83	80.56 (29.08)	83.14 (3.20)	54.79 (-34.10)	57.64 (5.20)	63.12 (9.51)	34.67 (-45.07)	27.21 (-21.52)	20.52 (-24.57)
343.1	Hand tools	2.22	82.00 (-47.19)	83.76 (2.15)	74.34 (-11.25)	97.12 (30.64)	108.25 (11.46)	65.27 (-39.70)	65.04 (-0.36)	68.66 (5.57)
343.3	Bolts and nuts	1.19	918.28 (67.43)	1067.28 (16.23)	1231.26 (15.36)	1238.94 (0.62)	1283.36 (3.58)	1322.76 (3.07)	1418.26 (7.22)	1573.42 (10.94)
343.3	Machine screw all types	5.14	107.13 (14.64)	115.63 (7.93)	121.20 (4.82)	118.68 (-2.08)	103.57 (-12.73)	106.75 (3.07)	114.46 (7.22)	126.98 (10.64)
344.1	Forging & stamping	8.21	136.18 (-6.72)	130.63 (-4.08)	160.79 (23.09)	170.06 (5.76)	173.76 (2.17)	183.46 (5.58)	212.90 (16.05)	262.09 (23.11)
346.2	Aluminium utensils	5.00	11.76 (6.23)	12.15 (3.32)	9.82 (-19.18)	15.87 (61.61)	18.47 (16.38)	27.90 (51.06)	38.51 (38.03)	41.02 (6.51)
346.2	Steel utensils	4.25	86.50 (4.52)	97.31 (12.50)	122.19 (25.57)	124.66 (2.02)	129.47 (3.86)	130.15 (0.53)	141.89 (9.02)	149.13 (5.10)
346.2	Brass utensils	1.31	24.10 (9.50)	21.06 (-12.61)	11.76 (-44.16)	23.72 (101.70)	29.98 (26.39)	30.90 (3.07)	33.13 (7.22)	36.76 (10.94)
346.2	Gas stove and cooking ranges	0.55	96.32 (3.88)	45.64 (-52.62)	41.17 (-9.79)	43.41 (5.44)	47.82 (10.16)	49.29 (3.07)	52.85 (7.22)	58.63 (10.94)
35-36	Manufacture of Machinery and Equipment other than Transport Equipment (Manufacture of Scientific Equipment, Photographic / Cinematographic equipment, Watches and Clocks is classified in Div.38)	146.83	152.72 (3.15)	159.31 (4.32)	156.99 (-1.46)	158.12 (0.72)	134.69 (-14.82)	148.19 (10.02)	169.75 (14.55)	215.02 (26.67)
350.1	Tractors	76.82	153.71 (3.42)	153.01 (-0.46)	132.87 (-13.16)	119.75 (-9.87)	43.25 (-63.88)	62.21 (43.84)	65.45 (5.21)	97.39 (48.81)
350.1	Tractor parts	3.31	62.88 (16.49)	64.62 (2.77)	68.71 (6.33)	96.12 (39.89)	155.26 (61.53)	185.13 (19.24)	222.30 (20.08)	237.17 (6.69)
351.7	Loaders	7.01	130.77 (16.44)	155.38 (18.82)	195.38 (25.74)	187.69 (-3.93)	287.69 (53.28)	361.86 (25.78)	402.13 (11.13)	534.75 (32.98)
353.9	Hydraulic press	0.58	60.49 (-18.33)	53.09 (-12.23)	48.15 (-9.30)	66.67 (38.46)	76.54 (14.80)	96.27 (25.78)	106.99 (11.13)	142.27 (32.98)
354.4	Printing machine	2.67	84.14 (-19.51)	93.85 (11.54)	78.64 (-16.21)	73.46 (-6.57)	82.20 (11.90)	176.49 (114.71)	181.33 (2.74)	203.09 (12.00)
355.1	Air-conditioning plants	0.87	118.92 (-20.00)	132.43 (11.36)	178.38 (34.70)	254.05 (42.42)	94.59 (-62.77)	118.98 (25.78)	132.22 (11.13)	175.82 (32.98)
355.3	Domestic refrigerators	23.56	129.17 (-3.43)	134.68 (4.27)	135.60 (0.69)	152.48 (12.45)	165.87 (8.78)	160.33 (-3.34)	197.78 (23.36)	243.98 (23.36)
356.1	Cranes	0.58	411.01 (15.76)	445.87 (8.48)	422.02 (-5.35)	527.52 (25.00)	814.68 (54.43)	904.10 (10.98)	784.87 (-13.19)	834.57 (6.33)

TABLE 2.3 (Contd)

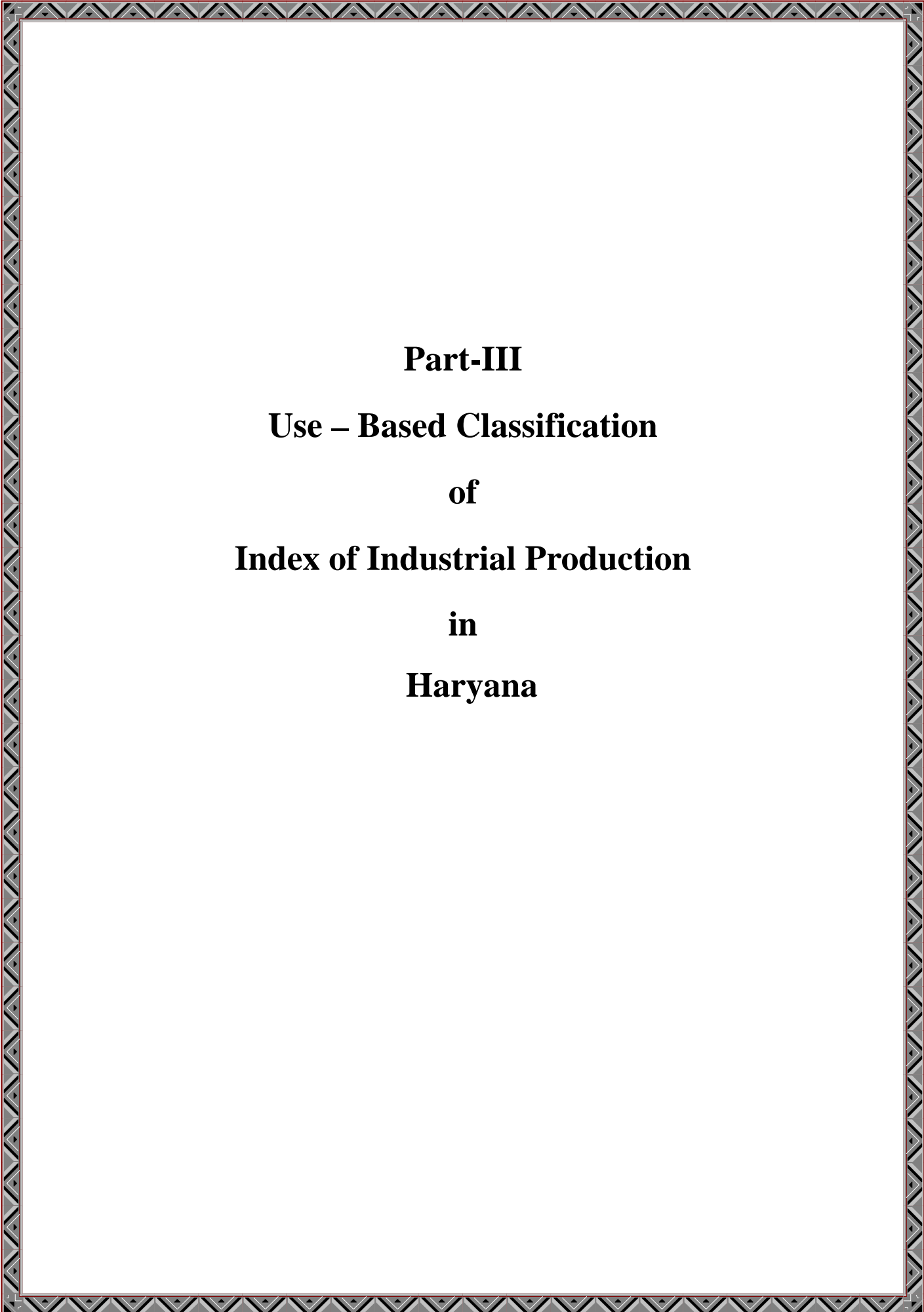
Annual Index of Industrial Production in Haryana at Item Level

		Base Year- 1993-94=100								
Group/ NIC Code	Items	Weight	Index							
			1999-2000	2000-01	2001-02	2002-03	2003-04	2004-05	2005-06	2006-07*
1	2	3	4	5	6	7	8	9	10	11
356.2	Air gas compressors	1.29	152.58 (0.00)	152.58 (0.00)	163.54 (7.18)	168.45 (3.00)	237.60 (41.05)	271.04 (14.08)	330.83 (22.06)	341.50 (3.23)
356.2	Compressors	0.95	348.94 (41.90)	404.15 (15.82)	467.02 (15.56)	508.17 (8.81)	686.14 (35.02)	863.03 (25.78)	959.08 (11.13)	1275.39 (32.98)
360.2	Transformers	1.32	223.53 (0.00)	247.06 (10.53)	258.82 (4.76)	258.82 (0.00)	388.24 (50.00)	332.39 (-14.39)	507.66 (52.73)	556.13 (9.55)
360.3	Switch gears and control gears	5.97	133.45 (-1.72)	141.10 (5.73)	159.34 (12.93)	165.14 (3.64)	236.51 (43.22)	297.48 (25.78)	330.59 (11.13)	439.62 (32.98)
360.4	Electric motors phase-I & II	4.81	273.27 (5.28)	367.99 (34.66)	411.22 (11.75)	464.85 (13.04)	530.86 (14.20)	386.45 (-27.20)	453.05 (17.23)	508.34 (12.20)
360.4	Electric pumps	1.05	219.64 (7.89)	164.29 (-25.20)	153.57 (-6.53)	158.93 (3.49)	230.36 (44.94)	155.46 (-32.51)	178.39 (14.75)	175.33 (-1.71)
361	PVC Insultated wires and cables	5.42	108.00 (28.57)	100.00 (-7.41)	136.00 (36.00)	160.00 (17.65)	176.00 (10.00)	172.64 (-1.91)	199.46 (15.53)	215.21 (7.90)
363.3	Flourescent-tubes	0.93	437.42 (23.38)	547.09 (25.07)	589.73 (7.79)	607.41 (3.00)	598.58 (-1.45)	618.28 (3.29)	630.20 (1.93)	517.44 (-17.89)
364.1	Electric fans all types	5.88	142.13 (-1.07)	151.36 (6.49)	139.51 (-7.83)	143.22 (2.66)	150.81 (5.30)	136.43 (-9.54)	185.71 (36.12)	252.81 (36.13)
364.9	Switches all types	0.59	300.46 (-23.44)	395.40 (31.60)	516.67 (30.67)	673.39 (30.33)	630.57 (-6.36)	630.57 (0.00)	849.00 (34.64)	974.03 (14.73)
367.1	Computers	1.20	348.20 (-5.15)	309.60 (-11.09)	554.60 (79.13)	509.10 (-8.20)	412.00 (-19.07)	518.21 (25.78)	575.89 (11.13)	765.82 (32.98)
368.2	Electrical capacitor	0.49	60.73 (-9.45)	57.26 (-5.71)	54.03 (-5.64)	54.36 (0.61)	45.18 (-16.89)	51.84 (14.75)	82.88 (59.88)	84.15 (1.54)
368.5	A.C.S.R. conductor	1.53	149.37 (7.28)	157.37 (5.36)	146.60 (-6.84)	189.03 (28.94)	152.00 (-19.59)	104.20 (-31.45)	147.37 (41.43)	154.90 (5.11)
37	Manufacture of Transport Equipment and Parts	225.39	229.59 (8.88)	242.88 (5.79)	264.26 (8.80)	289.10 (9.40)	353.36 (22.23)	416.33 (17.82)	452.66 (8.73)	504.05 (11.35)
374.1	Motor car (Maruti)	137.11	257.59 (22.22)	222.15 (-13.76)	226.58 (1.99)	227.85 (0.56)	299.37 (31.39)	352.71 (17.82)	362.18 (2.68)	380.06 (4.94)
374.8	Motor vehicle parts and accessories	26.72	153.29 (-4.31)	195.41 (27.48)	192.65 (-1.41)	242.40 (25.82)	248.15 (2.37)	257.32 (3.69)	313.29 (21.75)	360.80 (15.17)
375.1	Motor cycle all types	30.70	254.15 (0.69)	482.53 (89.86)	621.40 (28.78)	756.77 (21.78)	905.24 (19.62)	1131.04 (24.94)	1274.69 (12.70)	1510.88 (18.53)
375.4	Helmets	0.45	57.09 (38.10)	70.87 (24.14)	109.84 (54.99)	103.94 (-5.37)	137.40 (32.19)	112.83 (-17.88)	181.42 (60.79)	117.34 (-35.32)

TABLE 2.3 (Concl'd)**Annual Index of Industrial Production in Haryana at Item Level**

			Base Year- 1993-94=100							
Group/ NIC Code	Items	Weight	Index							
			1999-2000	2000-01	2001-02	2002-03	2003-04	2004-05	2005-06	2006-07*
1	2	3	4	5	6	7	8	9	10	11
375.8	Manufacture of auto parts & accessories for motor cycles, scooters & three wheelers	6.10	270.35 (-30.98)	366.78 (35.67)	369.85 (0.84)	376.73 (1.86)	392.03 (4.06)	332.46 (-15.20)	417.27 (25.51)	483.92 (15.97)
376.1	Bicycles	11.28	97.00 (-6.58)	56.63 (-41.61)	70.83 (25.08)	69.33 (-2.12)	53.24 (-23.21)	50.67 (-4.83)	58.16 (14.77)	57.81 (-0.60)
376.8	Bicycle parts	13.03	135.20 (-41.68)	102.96 (-23.85)	89.42 (-13.15)	83.08 (-7.09)	86.10 (3.63)	94.16 (9.36)	121.27 (28.78)	139.46 (15.00)
38	Other Manufacturing Industries	11.30	156.05 (11.43)	175.37 (12.38)	191.43 (9.16)	235.89 (23.23)	257.63 (9.22)	289.19 (12.25)	344.07 (18.98)	394.63 (14.70)
380.1	Microscopes	0.76	73.33 (-21.43)	66.67 (-9.08)	66.67 (0.00)	73.33 (9.99)	100.00 (36.37)	114.25 (14.25)	112.68 (-1.37)	110.67 (-1.78)
380.6	Syringes all types	6.16	183.14 (9.64)	209.44 (14.36)	232.77 (11.14)	308.23 (32.42)	357.18 (15.88)	427.94 (19.81)	502.53 (17.43)	596.10 (18.62)
380.1	Lenses	0.23	162.73 (-13.53)	165.84 (1.91)	158.39 (-4.49)	161.49 (1.96)	195.03 (20.77)	142.51 (-26.93)	150.75 (5.78)	159.31 (5.68)
381.1	Safety glass	0.71	404.55 (36.93)	445.45 (10.11)	427.27 (-4.08)	404.55 (-5.32)	240.91 (-40.45)	154.42 (-35.90)	154.42 (0.00)	123.55 (-19.99)
385.1	Sports goods	3.44	74.07 (11.02)	83.27 (12.42)	98.49 (18.28)	112.42 (14.14)	121.83 (8.37)	116.99 (-3.97)	163.50 (39.76)	168.29 (2.93)
40	Electricity	16.65	162.97 (36.01)	194.22 (19.17)	263.80 (35.83)	284.49 (7.84)	312.54 (9.86)	333.13 (6.59)	388.55 (16.64)	428.02 (10.16)

* Provisional



Part-III
Use – Based Classification
of
Index of Industrial Production
in
Haryana

INDEX OF INDUSTRIAL PRODUCTION IN HARYANA

Use-Based Classification

The Use-Based Classification represents the changing pattern of customer's needs, based on the tastes and habits towards the purchase of industrial products. The industrial products have been clubbed into four major groups comprising of Basic Goods Industries, Capital Goods Industries, Intermediate Goods Industries and Consumer Goods Industries with a view to analyse the movement of growth rate of different groups of industries and their achievements within the frame of organized sector.

The Use-Based Classification represents the classification of the industrial products according to the product applications. Each industry group reflects the variations in the production of a particular class of industries based on product usage. The industries are classified into four groups viz., Basic Goods, Capital Goods, Intermediate Goods and Consumer Goods with sub-groups such as Consumer Durable and Consumer Non-Durable Goods. Concepts and definitions for Use-Based Classification are given below.

(i) Basic Goods

Any bulk raw material product used for further production of new items in manufacturing and agriculture.

(ii) Capital Goods

Plants, machinery and goods used for further investments.

(iii) Intermediate Goods

Any goods product produced as incomplete product or which goes as input in production for further finishing.

(iv) Consumer Goods

a) Consumer Durable Goods

Products directly used by consumers and having a larger durability (say more than 2-3 years).

b) Consumer Non-Durable Goods

Products that are directly used by consumers and that cannot be preserved for long periods.

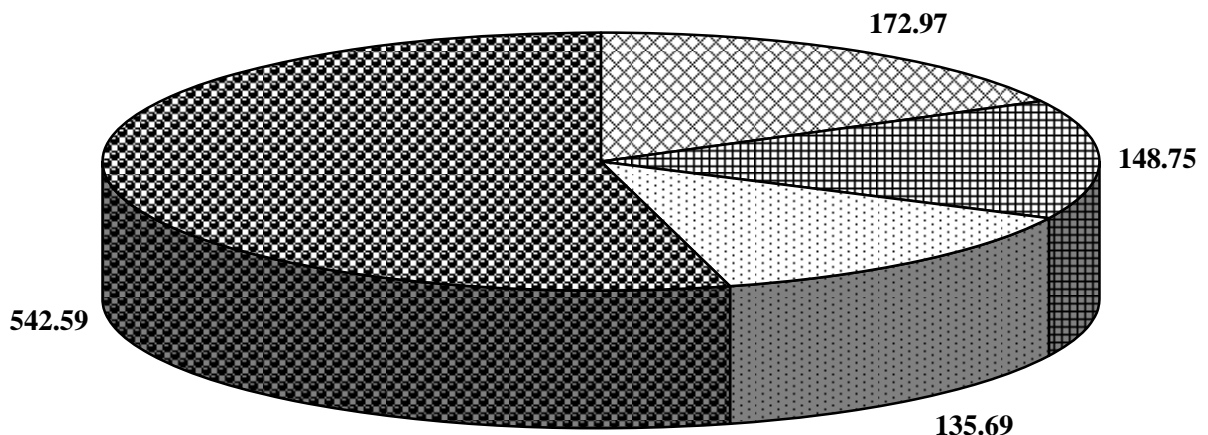
The share of each use-based industry group to the industry sector of the State and the number of industrial groups and items covered representing the use-based groups are as under: -

Share of each Use-Based Industry Group to the Industry Sector and Number of Industrial Groups and Items Covered

Base Year 1993-94

Sr. No	Industry Group	Weight	Number of Items covered	Number of Industry Groups
1.	Basic Goods Industries	172.97	20	9
2.	Capital Goods Industries	148.75	19	11
3.	Intermediate Goods Industries	135.69	21	12
4.	Consumer Goods Industries	542.59	58	35
	(a) Consumer Durable Goods	253.50	20	11
	(b) Consumer Non-Durable Goods	289.09	38	24
	Total	1000.00	118	67

**G-3.1 Index of Industrial Production in Haryana
Weights of Industries at Use-Based Classification
Base Year 1993-94**



⊠ Basic Goods Industries

⊠ Capital Goods Industries

⊠ Intermediate Goods Industries

⊠ Consumer Goods Industries

The indices of Use- Based classification and growth of each class of Use-Based industry groups are presented in following table :-

Index and Growth Rate of Each Class of Use-Based Industry

Base Year 1993-94=100

Sr. No	Industry Group	Weight	Index							
			1999-00	2000-01	2001-02	2002-03	2003-04	2004-05	2005-06	2006-07*
1	2	3	4	5	6	7	8	9	10	11
1	Basic Goods Industries	172.97	130.73 (5.85)	138.45 (5.91)	148.19 (7.04)	155.08 (4.65)	157.77 (1.73)	168.10 (6.55)	181.98 (8.26)	200.64 (10.25)
2	Capital Goods Industries	148.75	150.40 (2.41)	162.80 (8.24)	157.67 (-3.15)	164.78 (4.51)	140.92 (-4.48)	155.83 (10.58)	178.14 (14.32)	220.55 (23.81)
3	Intermediate Goods Industries	135.69	149.88 (5.67)	156.13 (4.17)	155.12 (-0.65)	156.12 (0.64)	165.92 (6.28)	170.37 (2.68)	176.75 (3.74)	185.30 (4.84)
4	Consumer Goods Industries	542.59	177.39 (8.44)	187.78 (5.86)	203.71 (8.48)	221.62 (8.79)	258.09 (16.46)	287.51 (11.40)	316.05 (9.93)	348.67 (10.32)
	(a)Consumer Durable Goods	253.50	218.89 (9.58)	228.67 (4.47)	251.02 (9.77)	271.91 (8.32)	330.65 (21.60)	387.12 (17.08)	422.26 (9.08)	471.47 (11.65)
	(b)Consumer Non-Durable Goods	289.09	141.00 (6.92)	151.93 (7.75)	162.23 (6.78)	177.52 (9.42)	194.47 (9.55)	200.15 (2.92)	222.91 (11.37)	239.50 (7.44)
	Total	1000.0	161.57 (6.85)	171.24 (5.99)	180.67 (5.51)	192.77 (6.70)	210.81 (9.36)	231.37 (9.75)	253.44 (9.54)	281.96 (11.25)

* Provisional

During the year 2006-07, Capital Goods Industries recorded the highest growth of 23.81 percent followed by Consumer Goods Industries 10.32 percent, Basic Goods Industries 10.25 percent and Intermediate Goods Industries 4.84 percent.

A. Basic Goods Industries

Basic Goods Industries recorded growth of 10.25 percent during the year 2006-07 as compared to the previous year. The index of this industry group rose from 181.98 in 2005-06 to 200.64 in 2006-07. Cement, fertilizer, pesticides & insecticides, M.S. pipes and tubes and generation of electricity are the major products in this group. These items have significantly effected the index of this group. Cement, S.S. ingot, steel casting, ordinary casting and forging & stamping recorded a notable increase during the year 2006-07. Index of formaldehyde and steel wire recorded negative growth over the previous year.

B. Capital Goods Industries

The Index of Capital Goods Industries increased from 178.14 in 2005-06 to 220.55 in 2006-07 showing an increase of 23.81 percent. Tractors, motor vehicle parts and accessories, machine screw all types, loaders, switch gear & control gear and PVC insulated wire & cables are major products of this group. Tractors recorded the highest growth of 48.81 percent. Manufacturing of electric pumps recorded negative growth rate of 4.01 percent. All other items have recorded the positive growth.

C. Intermediate Goods Industries

The Index of Intermediate Goods Industries increased from 176.75 in 2005-06 to 185.30 in 2006-07 recording an increase of 4.84 percent. This increase in the index is due to increase in the production of dyes and colours, building bricks, cotton seed, gas cylinders and ceramic tiles. The manufacturing of building bricks recorded the highest growth of 20.78 percent followed by gas cylinders 18.23 percent and dyes & colours 17.46 percent during the year 2006-07 over the previous year. Tin containers, asbestos cement products and refractory bricks have recorded negative growth rate of 24.57 percent, 3.41 percent and 1.34 percent respectively.

D. Consumer Goods Industries

Consumer Goods Industries recorded the annual growth of 10.32 percent during the year 2006-07 as the index of this group increased from 316.05 in 2005-06 to 348.67 in 2006-07.

(a) Consumer Durable Goods Industries

The Index of Consumer Durable Goods Industries increased from 422.26 in 2005-06 to 471.47 in 2006-07 recording annual growth of 11.65 percent. Cars, motor cycles, domestic refrigerators, electric fans, bicycles and auto parts are the main products of this group. Manufacturing of electric fan all type recorded the highest growth of 36.13 percent followed by computers 32.98 percent, domestic refrigerators 23.36 percent, syringes all type 18.62 percent and motor cycles all type 18.53 percent during the year 2006-07 as compared to previous year. The manufacturing of helmets, safety glass, microscopes and bicycles recorded negative growth of 35.32 percent, 19.99 percent, 1.78 percent and 0.60 percent respectively.

(b) Consumer Non -Durable Goods Industries

The Index of Consumer Non-Durable Goods Industries increased from 222.91 in 2005-06 to 239.50 in 2006-07 and recorded growth of 7.44 percent as compared to

previous year. Rice, desi ghee, vanaspati ghee, atta, sugar, edible oils, crockery, kitchen ware, readymade garments, leather shoes & chappals and paper all kind are the major products of this group. The production of corrugated boxes and card board boxes recorded the highest growth of 17.61 percent followed by woollen carpet 17.42 percent, capsule 15.90 percent, leather shoes and chappals 15.81 percent and cake all type 15.21 percent during 2006-07 as compared to previous year.

Index of Industrial Production according to Use-Based Classification for the years 1999-00 to 2006-07 for Basic Goods Industries, Capital Goods Industries, Intermediate Goods Industries and Consumer Goods Industries (Durable and Non-durable Goods separately) has been represented in table No. 3.1.

Limitations

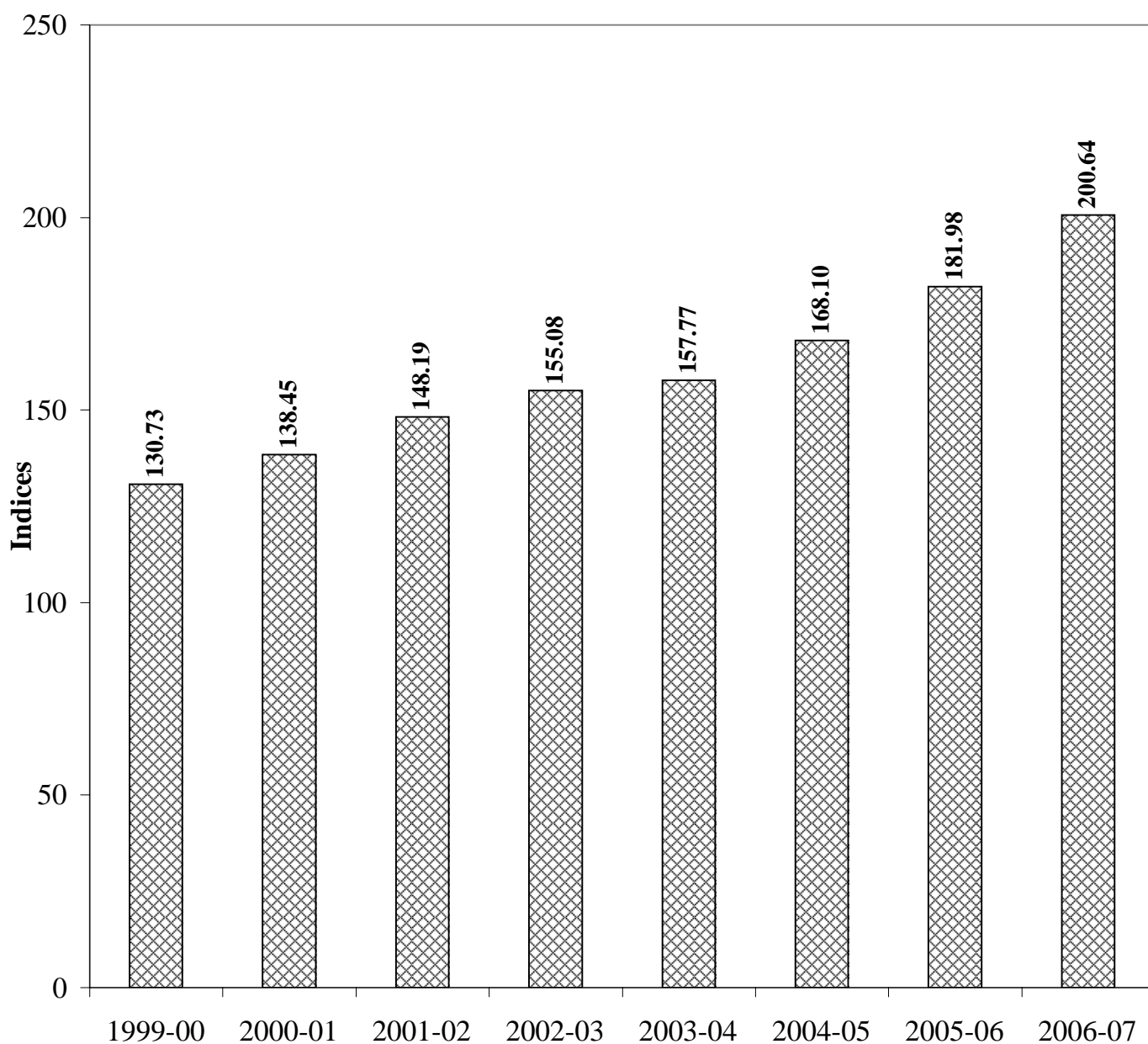
(i) The Index of Industrial Production in Haryana State prepared by Economic and Statistical Organisation covers both the large and small manufacturing (registered under Indian Factories Act 1948) units located in the rural and urban area of the State. It represents only the Manufacturing and Electricity Sector because mining and quarrying sector is not included.

(ii) The Unorganized part of Manufacturing Sector including small-scale industries (which are not covered in the ASI survey) are not covered due to non-availability of data.

(iii) Non-Responsive units have not been covered due to reporting difficulties.

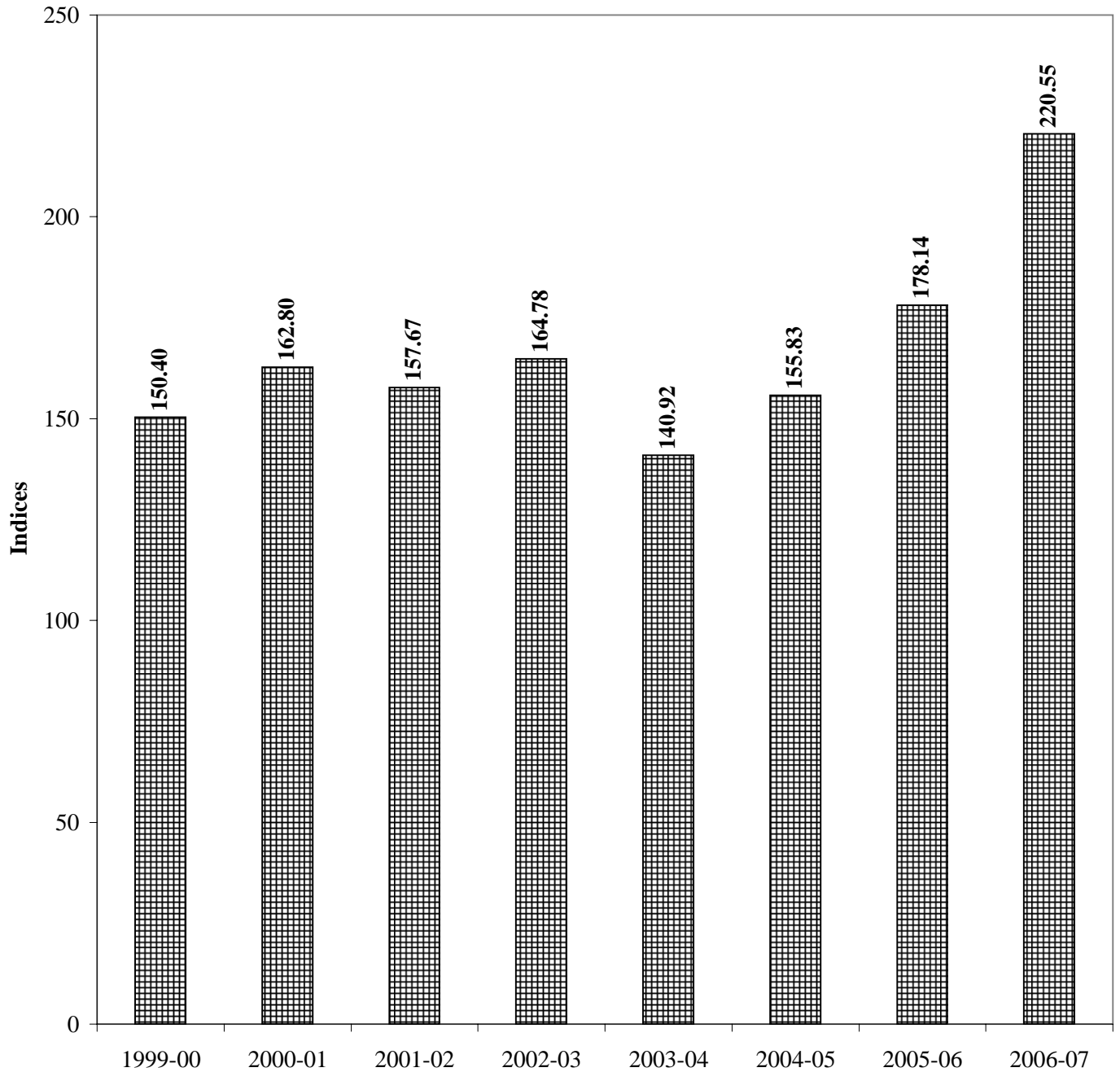
(iv) The Index is based on the physical volume of production and not on value of production.

**G-3.2 Index of Industrial Production in Haryana
Basic Goods Industries
Base Year 1993-94**



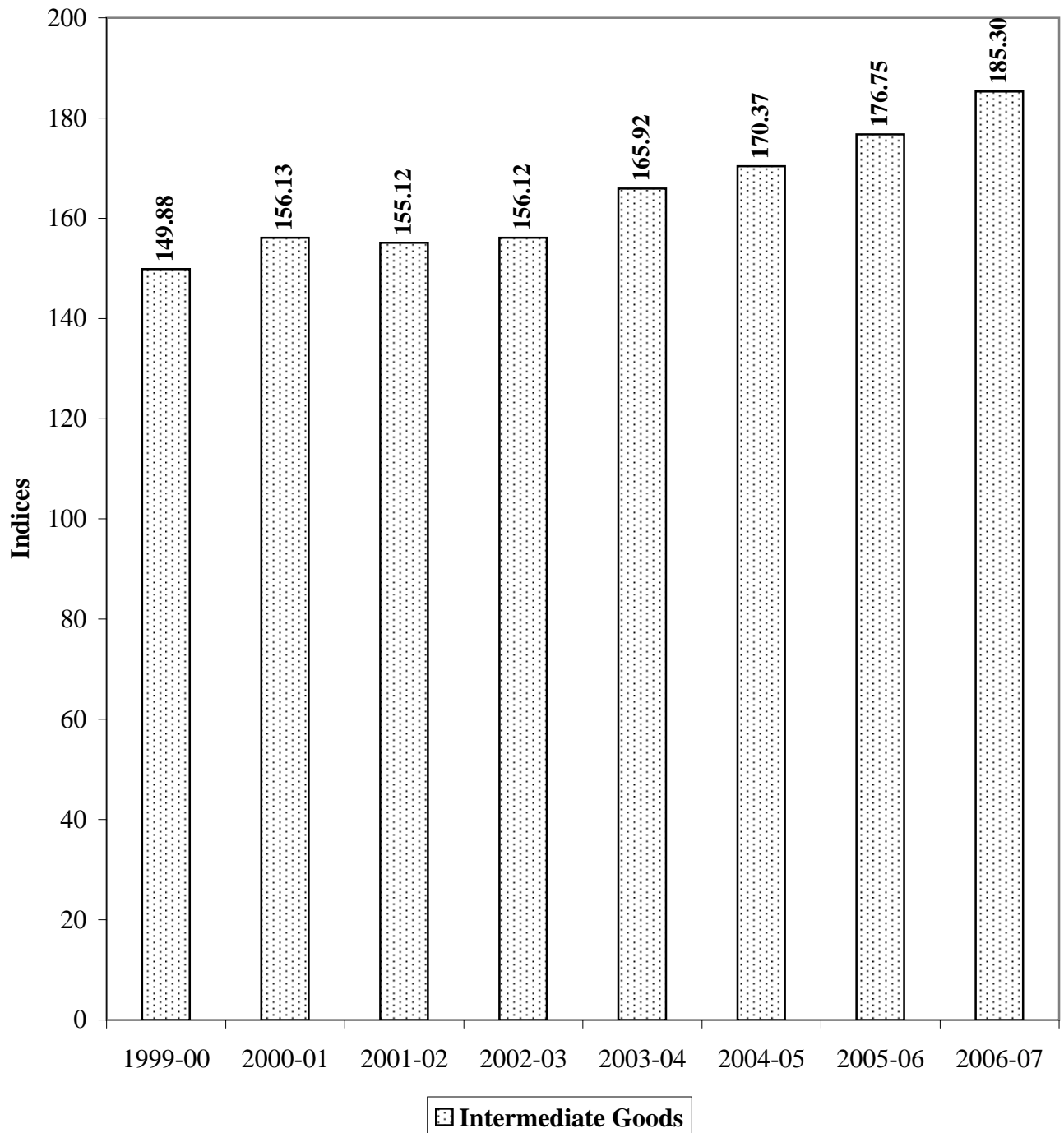
Basic Goods

**G-3.3 Index of Industrial Production in Haryana
Capital Goods Industries
Base Year 1993-94**

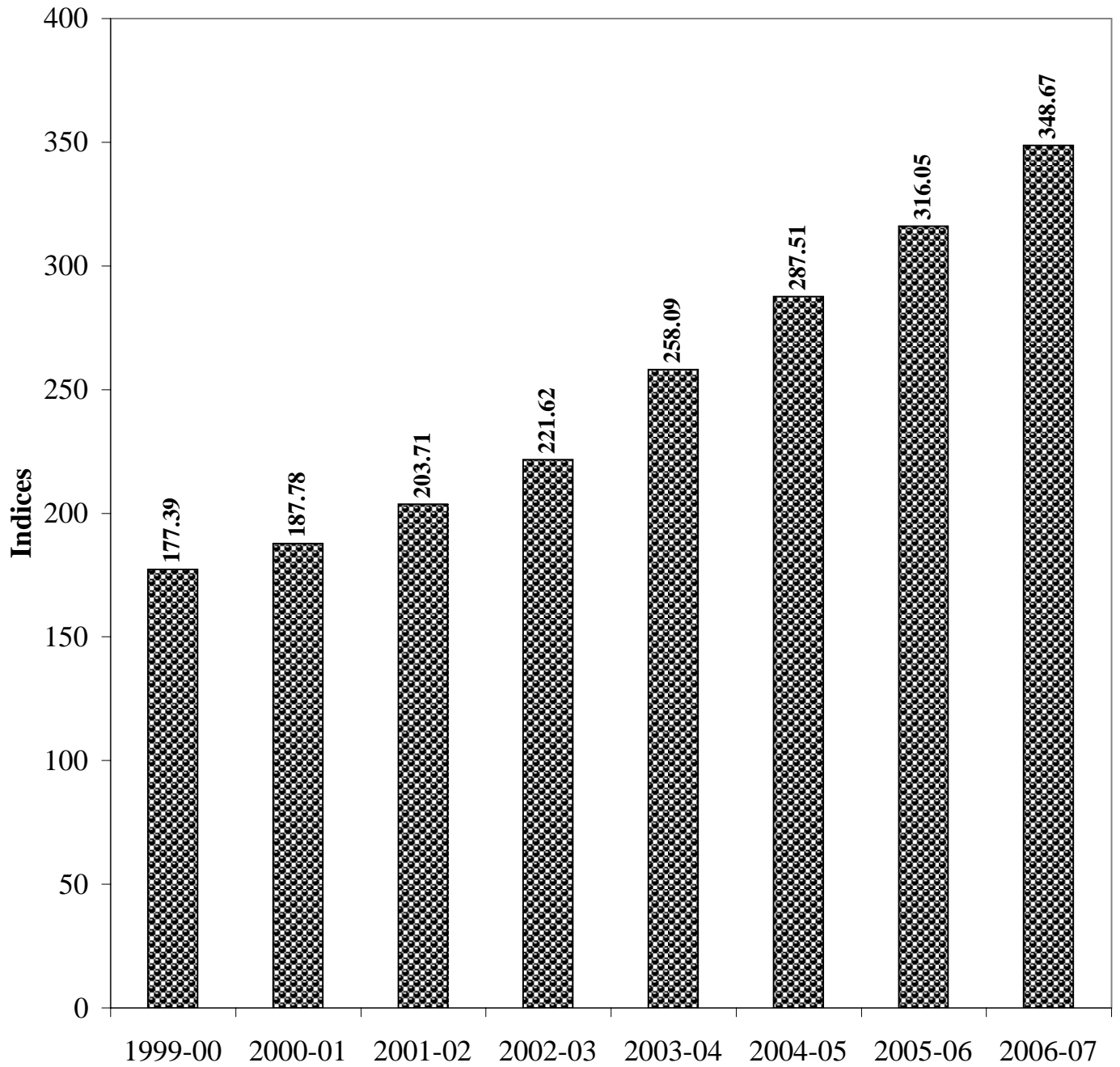


■ Capital Goods

**G-3.4 Index of Industrial Production in Haryana
Intermediate Goods Industries
Base Year 1993-94**



**G-3.5 Index of Industrial Production in Haryana
Consumer Goods Industries
Base Year 1993-94**



 **Consumer Goods**

**G-3.6 Index of Industrial Production in Haryana
for Each Class of Use-Based Industry
Base Year 1993-94**

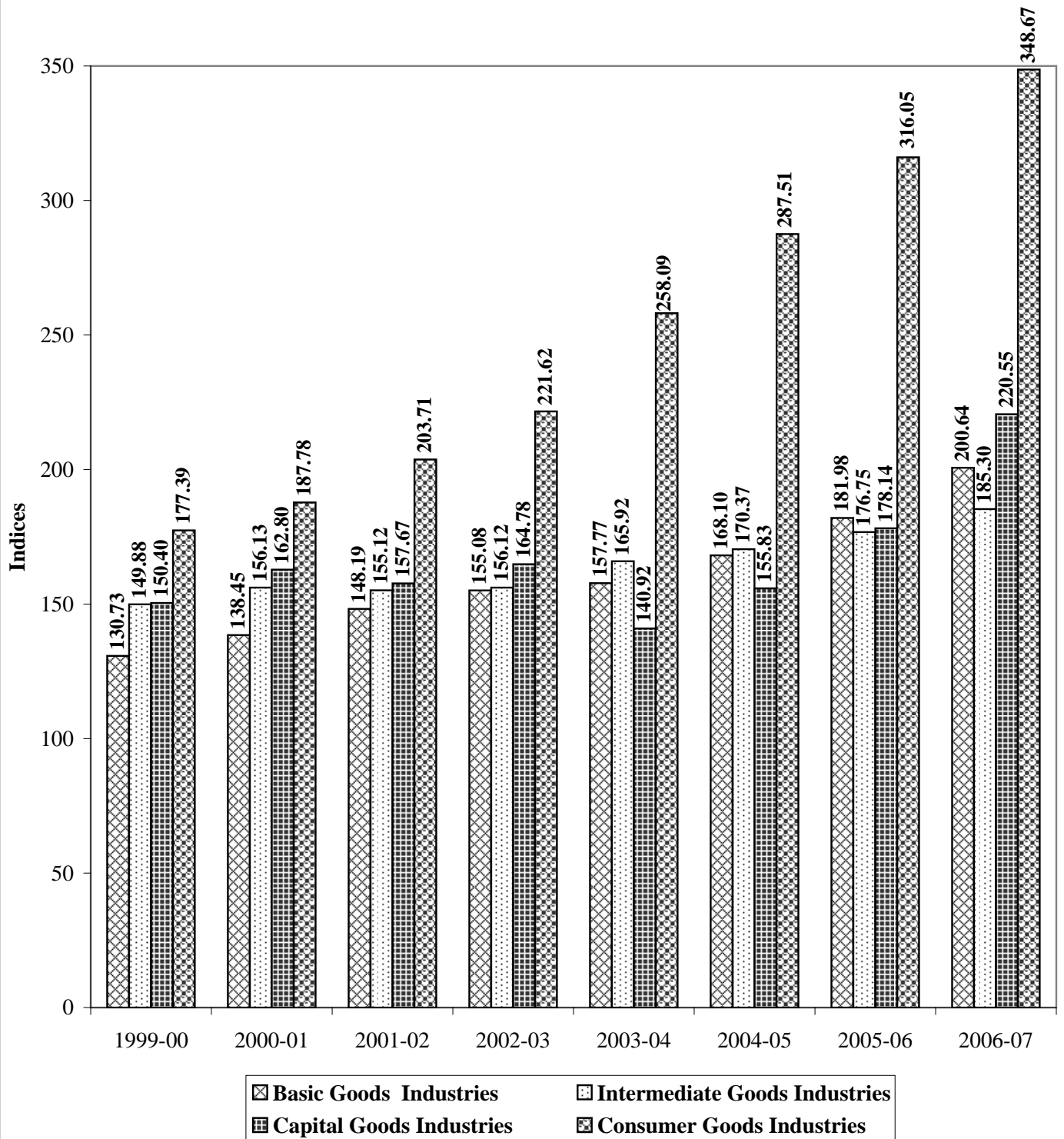


TABLE-3.1 (Contd)

**Index of Industrial Production in Haryana
Use - Based Classification at Item Level**

		Base year- 1993-94=100								
NIC Code 1987	Items	Weight	Index							
			1999-2000	2000-01	2001-02	2002-03	2003-04	2004-05	2005-06	2006-07*
1	2	3	4	5	6	7	8	9	10	11
	General Index	1000.00	161.57 (6.85)	171.24 (5.99)	180.67 (5.51)	192.77 (6.70)	210.81 (9.36)	231.37 (9.75)	253.44 (9.54)	281.96 (11.25)
A,	Basic Goods Industries	172.97	130.73 (5.85)	138.45 (5.91)	148.19 (7.04)	155.08 (4.65)	157.77 (1.73)	168.10 (6.55)	181.98 (8.26)	200.64 (10.25)
300.2	Gases	0.88	90.80 (25.03)	96.55 (6.33)	178.69 (85.08)	156.89 (-12.20)	159.13 (1.43)	195.24 (22.69)	195.24 (0.00)	195.24 (0.00)
300.9	Formaldehyde	1.45	58.48 (-13.49)	66.51 (13.73)	67.53 (1.53)	61.26 (-9.28)	62.21 (1.55)	66.87 (7.50)	59.78 (-10.60)	56.33 (-5.77)
301.1 2&3	Fertilizer	38.54	151.72 (2.56)	165.69 (9.21)	162.24 (-2.08)	164.14 (1.17)	143.62 (-12.50)	132.24 (-7.92)	124.58 (-5.80)	131.50 (5.56)
301.4	Pesticide & Insecticide (Solid)	3.52	247.99 (32.98)	250.94 (1.19)	267.47 (6.59)	296.94 (11.02)	327.46 (10.28)	344.05 (5.07)	374.73 (8.92)	424.09 (13.17)
301.4	Pesticide & Insecticide (Liquid)	5.59	99.48 (-11.13)	78.33 (-21.26)	82.12 (4.84)	96.58 (17.61)	114.05 (18.09)	170.24 (49.27)	214.11 (25.77)	232.00 (8.35)
324.2	Cement	8.82	41.31 (-19.05)	37.01 (-10.41)	25.23 (-31.83)	24.86 (-1.47)	25.42 (2.25)	27.17 (6.88)	28.42 (4.60)	37.79 (32.98)
331.6	Steel sheets	6.33	99.63 (0.00)	106.54 (6.94)	96.62 (-9.31)	105.27 (8.95)	105.27 (0.00)	108.73 (3.29)	117.63 (8.18)	128.11 (8.91)
331.2	Narrow cold rolled steel strips	17.32	166.05 (10.03)	185.65 (11.80)	211.02 (13.67)	232.43 (10.14)	233.63 (0.52)	214.69 (-8.10)	241.98 (12.71)	272.73 (12.71)
331.3	Stainless steel	9.36	112.94 (0.00)	141.57 (25.35)	161.96 (14.40)	158.82 (-1.94)	194.51 (22.47)	200.91 (3.29)	217.34 (8.18)	236.71 (8.91)
331.9	M.S. Pipes and tubes	27.58	119.42 (1.01)	114.06 (-4.49)	112.64 (-1.24)	112.70 (0.05)	107.97 (-4.20)	110.17 (2.04)	113.71 (3.21)	119.03 (4.68)
331.9	S.S. Ingots	1.53	114.84 (-11.48)	75.57 (-34.20)	89.07 (17.86)	94.41 (6.00)	123.94 (31.28)	169.28 (36.58)	205.11 (21.16)	269.30 (31.29)
330.1	Bar and rods	4.10	103.18 (-1.54)	100.15 (-2.94)	116.25 (16.08)	109.27 (-6.00)	117.19 (7.25)	121.05 (3.29)	130.95 (8.18)	142.51 (8.91)
330.1	Angle channels	3.12	205.29 (47.67)	205.29 (0.00)	171.03 (-16.69)	218.17 (27.56)	218.17 (0.00)	225.35 (3.29)	243.78 (8.18)	265.50 (8.91)
330.1	Billets and slabs	2.07	93.98 (15.00)	103.12 (9.73)	70.95 (-31.20)	76.28 (7.51)	121.50 (59.28)	127.77 (5.16)	134.25 (5.08)	137.11 (2.13)

TABLE-3.1 (Contd)

**Index of Industrial Production in Haryana
Use - Based Classification at Item Level**

		Base year- 1993-94=100								
NIC Code 1987	Items	Weight	Index							
			1999-2000	2000-01	2001-02	2002-03	2003-04	2004-05	2005-06	2006-07*
1	2	3	4	5	6	7	8	9	10	11
330.1	Steel casting	1.30	210.00 (10.82)	206.80 (-1.52)	187.50 (-9.33)	134.20 (-28.43)	190.60 (42.03)	205.85 (8.00)	228.50 (11.00)	288.70 (26.34)
330.1	Steel wires	6.73	88.82 (-15.61)	87.58 (-1.40)	76.92 (-12.17)	83.00 (7.90)	85.60 (3.13)	109.64 (28.08)	122.92 (12.11)	117.99 (-4.01)
334.1	Brass sheets and strips	5.95	95.80 (-1.19)	100.63 (5.04)	95.86 (-4.74)	99.61 (3.91)	99.40 (-0.21)	310.03 (211.89)	317.11 (2.28)	360.51 (13.69)
337.1	Ordinary casting	3.92	62.19 (-1.36)	58.57 (-5.82)	70.02 (19.55)	73.92 (5.57)	89.62 (21.24)	91.16 (1.72)	109.14 (19.73)	134.25 (23.00)
344	Forging and stamping	8.21	136.18 (-6.72)	130.63 (-4.08)	160.79 (23.09)	170.06 (5.76)	173.76 (2.17)	183.46 (5.58)	212.90 (16.05)	262.09 (23.11)
400.0	Electricity	16.65	162.97 (36.01)	194.22 (19.17)	263.80 (35.83)	284.49 (7.84)	312.54 (9.86)	333.13 (6.59)	388.55 (16.64)	428.02 (10.16)
B	Capital Goods Industries	148.75	150.40 (2.41)	162.80 (8.24)	157.67 (-3.15)	164.78 (4.51)	140.92 (-14.48)	155.83 (10.58)	178.14 (14.32)	220.55 (23.81)
343.1	Hand tools	2.22	82.00 (-47.19)	83.76 (2.15)	74.34 (-11.25)	97.12 (30.64)	108.25 (11.46)	65.27 (-39.70)	65.04 (-0.36)	68.66 (5.57)
343.3	Machine screw all types	5.14	107.13 (14.64)	115.63 (7.93)	121.20 (4.82)	118.68 (-2.08)	103.57 (-12.73)	106.75 (3.07)	114.46 (7.22)	126.98 (10.94)
350.1	Tractors	76.82	153.71 (3.42)	153.01 (-0.46)	132.87 (-13.16)	119.75 (-9.87)	43.25 (-63.88)	62.21 (43.84)	65.45 (5.21)	97.39 (48.81)
350.1	Tractor parts	3.31	62.88 (16.49)	64.62 (2.77)	68.71 (6.33)	96.12 (39.89)	155.26 (61.53)	185.13 (19.24)	222.30 (20.08)	237.17 (6.69)
351.7	Loaders	7.01	130.77 (16.44)	155.38 (18.82)	195.38 (25.74)	187.69 (-3.93)	287.69 (53.28)	361.86 (25.78)	402.13 (11.13)	534.75 (32.98)
353.9	Hydraulic press	0.58	60.49 (-18.33)	53.09 (-12.23)	48.15 (-9.30)	66.67 (38.46)	76.54 (14.80)	96.27 (25.78)	106.99 (11.13)	142.27 (32.98)
354.4	Printing machines	2.67	84.14 (-19.51)	93.85 (11.54)	78.64 (-16.21)	73.46 (-6.57)	82.20 (11.90)	176.49 (114.71)	181.33 (2.74)	203.09 (12.00)
355.1	Air conditioning plants	0.87	118.92 (-20.00)	132.43 (11.36)	178.38 (34.70)	254.05 (42.42)	94.59 (-62.77)	118.98 (25.78)	132.22 (11.13)	175.82 (32.98)
356.1	Cranes	0.58	411.01 (15.76)	445.87 (8.48)	422.02 (-5.35)	527.52 (25.00)	814.68 (54.43)	904.10 (10.98)	784.87 (-13.19)	834.57 (6.33)

TABLE-3.1 (Contd)

**Index of Industrial Production in Haryana
Use - Based Classification at Item Level**

		Base year- 1993-94=100								
NIC Code 1987	Items	Weight	Index							
			1999-2000	2000-01	2001-02	2002-03	2003-04	2004-05	2005-06	2006-07*
1	2	3	4	5	6	7	8	9	10	11
356.2	Air gas compressors	1.29	152.58 (0.00)	152.58 (0.00)	163.54 (7.18)	168.45 (3.00)	237.60 (41.05)	271.04 (14.08)	330.83 (22.06)	341.50 (3.23)
356.2	Compressors	0.95	348.94 (41.90)	404.15 (15.82)	467.02 (15.56)	508.17 (8.81)	686.14 (35.02)	863.03 (25.78)	959.08 (11.13)	1275.39 (32.98)
360.2	Transformers	1.32	223.53 (0.00)	247.06 (10.53)	258.82 (4.76)	258.82 (0.00)	388.24 (50.00)	332.39 (-14.39)	507.66 (52.73)	556.13 (9.55)
360.3	Switch gear and control gears	5.97	133.45 (-1.72)	141.10 (5.73)	159.34 (12.93)	165.14 (3.64)	236.51 (43.22)	297.48 (25.78)	330.59 (11.13)	439.62 (32.98)
360.4	Electric motors phase 1&11	4.81	273.27 (5.28)	367.99 (34.66)	411.22 (11.75)	464.85 (13.04)	530.86 (14.20)	386.45 (-27.20)	453.05 (17.23)	508.34 (12.20)
360.4	Electric pumps	1.05	219.64 (7.89)	164.29 (-25.20)	153.57 (-6.53)	158.93 (3.49)	230.36 (44.94)	155.46 (-32.51)	178.39 (14.75)	175.33 (-1.71)
361	P.V.C. insulated wires and cables	5.42	108.00 (28.57)	100.00 (-7.41)	136.00 (36.00)	160.00 (17.65)	176.00 (10.00)	172.64 (-1.91)	199.46 (15.53)	215.21 (7.90)
368.2	Electrical capacitors	0.49	60.73 (-9.45)	57.26 (-5.71)	54.03 (-5.64)	54.36 (0.61)	45.18 (-16.89)	51.84 (14.75)	82.88 (59.88)	84.15 (1.54)
368.5	A.C.S.R. Conductors	1.53	149.37 (7.28)	157.37 (5.36)	(146.60) (-6.84)	189.03 (28.94)	152.00 (-19.59)	104.20 (-31.45)	147.37 (41.43)	154.90 (5.11)
374.8	Motor vehicle parts and accessories	26.72	153.29 (-4.31)	195.41 (27.48)	192.65 (-1.41)	242.40 (25.82)	248.15 (2.37)	257.32 (3.69)	313.29 (21.75)	360.80 (15.17)
C	Intermediate Goods Industries	135.69	149.88 (5.67)	156.13 (4.17)	155.12 (-0.65)	156.12 (0.64)	165.92 (6.28)	170.37 (2.68)	176.75 (3.74)	185.30 (4.84)
230	Cotton ginned	6.73	80.49 (3.13)	85.37 (6.06)	41.46 (-51.43)	41.46 (0.00)	65.85 (58.83)	61.17 (-7.11)	51.20 (-16.30)	56.36 (10.08)
230	Cotton pressed (Kapas)	10.64	124.31 (4.68)	131.94 (6.14)	84.03 (-36.31)	81.25 (-3.31)	93.06 (14.53)	95.49 (2.61)	88.78 (-7.03)	96.00 (8.13)
230	Cotton seeds	2.35	138.46 (-2.71)	150.00 (8.33)	173.08 (15.39)	211.54 (22.22)	192.31 (-9.09)	225.99 (17.51)	237.45 (5.07)	276.48 (16.44)
235.1	Cotton yarn	14.78	152.50 (5.17)	155.00 (1.64)	175.00 (12.90)	182.50 (4.28)	192.50 (5.48)	211.49 (9.86)	244.24 (15.49)	244.96 (0.29)
242.1	Shoddy / Woollen yarn	6.87	146.79 (18.73)	157.29 (7.15)	166.41 (5.80)	187.29 (12.55)	221.22 (18.12)	243.30 (9.98)	251.91 (3.54)	287.94 (14.12)

TABLE-3.1 (Contd)

**Index of Industrial Production in Haryana
Use - Based Classification at Item Level**

		Base year- 1993-94=100								
NIC Code 1987	Items	Weight	Index							
			1999-2000	2000-01	2001-02	2002-03	2003-04	2004-05	2005-06	2006-07*
1	2	3	4	5	6	7	8	9	10	11
242.1	Carpet yarn	2.08	105.13 (3.25)	102.37 (-2.62)	111.36 (8.79)	105.18 (-5.55)	79.66 (-24.26)	80.34 (0.85)	81.82 (1.84)	83.07 (1.53)
247.2	Synthetic / Polyester yarn	29.29	153.76 (7.09)	162.97 (5.99)	167.98 (3.07)	170.56 (1.53)	172.52 (1.15)	172.55 (0.02)	175.43 (1.67)	175.86 (0.25)
303.3	Dyes and colours	0.66	245.61 (-32.46)	80.55 (-67.20)	72.92 (-9.47)	79.25 (8.68)	91.69 (15.70)	43.93 (-52.08)	66.91 (52.31)	78.59 (17.46)
309.4	Blowing agents	1.56	194.74 (0.00)	187.20 (-3.87)	207.97 (11.10)	206.62 (-0.65)	199.37 (-3.51)	206.49 (3.57)	227.09 (9.98)	244.29 (7.57)
310.1	Tyres for motor vehicles	20.24	181.05 (9.38)	191.97 (6.03)	189.21 (-1.44)	173.03 (-8.55)	180.53 (4.33)	166.40 (-7.83)	154.92 (-6.90)	174.65 (12.74)
310.1	Tubes for motor vehicles	1.25	168.42 (6.79)	170.42 (1.19)	156.99 (-7.88)	145.19 (-7.52)	171.69 (18.25)	173.32 (0.95)	180.93 (4.39)	180.93 (0.00)
312.1	P.V.C. Pipes	2.07	54.26 (3.00)	50.20 (-7.48)	69.88 (39.20)	77.83 (11.38)	57.18 (-26.52)	61.77 (8.03)	64.48 (4.39)	66.79 (3.59)
312.2	Belting all types	3.12	155.81 (10.52)	155.81 (0.00)	236.39 (51.72)	260.09 (10.02)	248.17 (-4.58)	295.45 (19.05)	308.42 (4.39)	319.49 (3.59)
313.1	Thermocols	0.83	131.37 (-6.51)	131.37 (0.00)	200.98 (52.99)	221.24 (10.08)	325.82 (47.27)	445.66 (36.78)	465.22 (4.39)	481.92 (3.59)
313.1	Plastic sheets	17.41	127.99 (3.60)	134.54 (5.12)	122.27 (-9.12)	121.11 (-0.94)	135.02 (11.48)	153.75 (13.87)	168.94 (9.88)	169.52 (0.34)
320.1	Refractory bricks	1.71	106.60 (-19.86)	96.23 (-9.73)	239.62 (149.01)	244.34 (1.97)	254.72 (4.25)	254.72 (0.00)	254.72 (0.00)	251.32 (-1.34)
320.4	Building bricks	1.80	313.36 (50.36)	294.69 (-5.96)	255.13 (13.42)	242.48 (-4.95)	254.51 (4.97)	254.47 (-0.02)	360.27 (41.58)	435.13 (20.78)
320.5	Ceramic tiles	2.68	294.41 (-5.27)	330.44 (12.24)	355.49 (7.58)	356.69 (0.34)	356.69 (0.00)	311.53 (-12.66)	348.89 (11.99)	405.81 (16.31)
327	Asbestos cement products	3.42	147.54 (3.45)	154.10 (4.45)	165.57 (7.44)	178.69 (7.92)	198.36 (11.00)	207.31 (4.51)	219.25 (5.76)	211.77 (-3.41)
341.2	Gas cylinders	2.37	226.63 (-16.60)	247.28 (9.11)	173.91 (-29.67)	160.33 (-7.81)	219.84 (37.12)	227.27 (3.38)	181.70 (-20.05)	214.82 (18.23)
341.3	Tin containers	3.83	80.56 (29.08)	83.14 (3.20)	54.79 (-34.10)	57.64 (5.20)	63.12 (9.51)	34.67 (-45.07)	27.21 (-21.52)	20.52 (-24.57)

TABLE-3.1 (Contd)

**Index of Industrial Production in Haryana
Use - Based Classification at Item Level**

		Base year- 1993-94=100								
NIC Code 1987	Items	Weight	Index							
			1999-2000	2000-01	2001-02	2002-03	2003-04	2004-05	2005-06	2006-07*
1	2	3	4	5	6	7	8	9	10	11
D	Consumer Goods Industries	542.59	177.39 (8.44)	187.78 (5.86)	203.71 (8.48)	221.62 (8.79)	258.09 (16.46)	287.51 (11.40)	316.05 (9.93)	348.67 (10.32)
(a)	Durable Goods Industries	253.50	218.89 (9.58)	228.67 (4.47)	251.02 (9.77)	271.91 (8.33)	330.65 (21.60)	387.12 (17.08)	422.26 (9.08)	471.47 (11.65)
343.3	Bolts & nuts	1.19	918.28 (67.43)	1067.28 (16.23)	1231.26 (15.36)	1238.94 (0.62)	1283.36 (3.58)	1322.76 (3.07)	1418.26 (7.22)	1573.42 (10.94)
346.2	Aluminium utensils	5.00	11.76 (6.23)	12.15 (3.32)	9.82 (-19.18)	15.87 (61.61)	18.47 (16.38)	27.90 (51.06)	38.51 (38.03)	41.02 (6.51)
346.2	Steel utensils	4.25	86.50 (4.52)	97.31 (12.50)	122.19 (25.57)	124.66 (2.02)	129.47 (3.86)	130.15 (0.53)	141.89 (9.02)	149.13 (5.10)
346.2	Brass utensils	1.31	24.10 (9.50)	21.06 (-12.61)	11.76 (-44.16)	23.72 (101.70)	29.98 (26.39)	30.90 (3.07)	33.13 (7.22)	36.76 (10.94)
346.6	Gas stove and cooking ranges	0.55	96.32 (3.88)	45.64 (-52.62)	41.17 (-9.79)	43.41 (5.44)	47.82 (10.16)	49.29 (3.07)	52.85 (7.22)	58.63 (10.94)
355.3	Domestic refrigerators	23.56	129.17 (-3.43)	134.68 (4.27)	135.60 (0.69)	152.48 (12.45)	165.87 (8.78)	160.33 (-3.34)	197.78 (23.36)	243.98 (23.36)
364.1	Electric Fans all types	5.88	142.13 (-1.07)	151.36 (6.49)	139.51 (-7.83)	143.22 (2.66)	150.81 (5.30)	136.43 (-9.54)	185.71 (36.12)	252.81 (36.13)
364.9	Switches all types	0.59	300.46 (-23.44)	395.40 (31.60)	516.67 (30.67)	673.39 (30.33)	630.57 (-6.36)	630.57 (0.00)	849.00 (34.64)	974.03 (14.73)
374.1	Motor car (Maruti)	137.11	257.59 (22.22)	222.15 (-13.76)	226.58 (1.99)	227.85 (0.56)	299.37 (31.39)	352.71 (17.82)	362.18 (2.68)	380.06 (4.94)
367.1	Computers	1.20	348.20 (-5.15)	309.60 (-11.09)	554.60 (79.13)	509.10 (-8.20)	412.00 (-19.07)	518.21 (25.78)	575.89 (11.13)	765.82 (32.98)
375.1	Motor cycle all types	30.70	254.15 (0.69)	482.53 (89.86)	621.41 (28.78)	756.77 (21.78)	905.24 (19.62)	1131.04 (24.94)	1274.69 (12.70)	1510.88 (18.53)
375.4	Helmets	0.45	57.09 (38.10)	70.87 (24.14)	109.84 (54.99)	103.94 (-5.37)	137.40 (32.19)	112.83 (-17.88)	181.42 (60.79)	117.34 (-35.32)
375.8	Auto parts and accessories for motor cycle, scooters & three wheelers	6.10	270.35 (-30.98)	366.78 (35.67)	369.85 (0.84)	376.73 (1.86)	392.03 (4.06)	332.46 (-15.20)	417.27 (25.51)	483.92 (15.97)
376.1	Bicycles	11.28	97.00 (-6.58)	56.63 (-41.61)	70.83 (25.08)	69.33 (-2.12)	53.24 (-23.21)	50.67 (-4.83)	58.16 (14.78)	57.81 (-0.60)

TABLE-3.1 (Contd)

**Index of Industrial Production in Haryana
Use - Based Classification at Item Level**

		Base year- 1993-94=100								
NIC Code 1987	Items	Weight	Index							
			1999-2000	2000-01	2001-02	2002-03	2003-04	2004-05	2005-06	2006-07*
1	2	3	4	5	6	7	8	9	10	11
376.8	Bicycle parts	13.03	135.20 (-41.68)	102.96 (-23.85)	89.42 (-13.15)	83.08 (-7.09)	86.10 (3.63)	94.16 (9.36)	121.27 (28.79)	139.46 (15.00)
380.1	Microscopes	0.76	73.33 (-21.43)	66.67 (-9.08)	66.67 (0.00)	73.33 (9.99)	100.00 (36.37)	114.25 (14.25)	112.68 (-1.37)	110.67 (-1.78)
380.6	Syringes all types	6.16	183.14 (9.64)	209.44 (14.36)	232.77 (11.14)	308.23 (32.42)	357.18 (15.88)	427.94 (19.81)	502.53 (17.43)	596.10 (18.62)
381.1	Lenses	0.23	162.73 (-13.53)	165.84 (1.91)	158.39 (-4.49)	161.49 (1.96)	195.03 (20.77)	142.51 (-26.93)	150.75 (5.78)	159.31 (5.68)
381.1	Safety glass	0.71	404.55 (36.93)	445.45 (10.11)	427.27 (-4.08)	404.55 (-5.32)	240.91 (-40.45)	154.42 (-35.90)	154.42 (0.00)	123.55 (-19.99)
385.9	Sports Goods	3.44	74.07 (11.02)	83.27 (12.42)	98.49 (18.28)	112.42 (14.14)	121.83 (8.37)	116.99 (-3.97)	163.50 (39.76)	168.29 (2.93)
(b)	Non-Durable Goods Industries	289.09	141.00 (6.92)	151.93 (7.75)	162.23 (6.78)	177.52 (9.42)	194.47 (9.55)	200.15 (2.92)	222.91 (11.37)	239.50 (7.44)
201.1	Milk powder all kind	2.55	105.15 (7.42)	123.51 (17.46)	118.65 (-3.93)	140.87 (18.73)	134.62 (-4.43)	132.82 (-1.34)	128.40 (-3.33)	116.80 (-9.30)
201.3	Desi ghee	4.23	269.62 (35.59)	206.70 (-23.34)	255.84 (23.77)	312.92 (23.31)	257.28 (-17.78)	234.88 (-8.71)	224.65 (4.36)	241.48 (7.49)
201.4	Milk all kind	3.63	155.68 (-10.06)	185.98 (19.46)	193.82 (4.22)	235.16 (21.33)	258.74 (10.03)	258.31 (-0.17)	261.35 (1.18)	269.04 (2.94)
204.1	Atta	4.51	162.22 (21.67)	177.78 (9.59)	184.44 (3.75)	186.67 (1.21)	188.89 (1.19)	188.89 (0.00)	191.12 (1.18)	174.34 (-8.78)
204.2	Rice all kind	76.37	116.91 (2.79)	124.52 (6.51)	127.48 (2.38)	134.88 (5.81)	152.22 (12.85)	152.73 (0.34)	169.87 (11.22)	191.48 (12.72)
204.2	Bran all kind	3.36	94.12 (8.11)	107.06 (13.75)	120.00 (12.09)	178.82 (49.02)	202.35 (13.16)	219.19 (8.32)	247.29 (12.82)	254.28 (2.83)
204.3	Dal all kind	2.20	47.83 (-71.99)	34.78 (-27.28)	39.13 (12.51)	30.43 (-22.23)	21.74 (-28.56)	24.92 (14.63)	28.70 (15.17)	29.70 (3.46)
205.2	Biscuits	5.64	396.00 (23.75)	448.00 (13.13)	444.00 (-0.89)	396.00 (-10.81)	204.00 (-48.48)	206.35 (1.15)	164.47 (-20.30)	144.20 (-12.32)
206	Sugar	21.77	109.61 (7.36)	124.02 (13.15)	136.04 (9.69)	142.04 (4.41)	162.46 (14.37)	156.43 (-3.71)	139.89 (-10.57)	135.12 (-3.41)

TABLE-3.1 (Contd)

**Index of Industrial Production in Haryana
Use - Based Classification at Item Level**

		Base year- 1993-94=100								
NIC Code 1987	Items	Weight	Index							
			1999-2000	2000-01	2001-02	2002-03	2003-04	2004-05	2005-06	2006-07*
1	2	3	4	5	6	7	8	9	10	11
210	Vanaspati ghee	4.54	52.00 (-45.83)	60.00 (15.38)	88.00 (46.67)	96.00 (9.09)	128.00 (33.33)	164.64 (28.63)	212.27 (28.93)	218.03 (2.71)
211.2	Edible oil	21.72	142.22 (12.28)	151.11 (6.25)	164.44 (8.82)	175.56 (6.76)	226.67 (29.11)	242.16 (6.83)	262.43 (8.37)	275.65 (5.04)
211.8	Cake all kind	8.97	85.93 (7.55)	93.47 (8.77)	101.01 (8.07)	110.05 (8.96)	93.97 (-14.61)	74.43 (-20.79)	90.08 (21.03)	103.78 (15.21)
217.1&2	Poultry & cattle feed	1.78	146.97 (-11.01)	98.48 (-32.99)	80.30 (-18.46)	118.18 (47.17)	81.82 (-30.76)	81.91 (0.11)	95.02 (16.01)	92.39 (-2.77)
218	Starch all kind	0.88	113.33 (0.00)	93.33 (-17.65)	66.67 (-32.88)	40.00 (-40.00)	73.33 (83.32)	112.37 (53.24)	156.65 (39.41)	174.95 (11.68)
220	Spirit all kind	4.41	63.10 (7.97)	64.35 (1.98)	73.75 (14.61)	77.21 (4.69)	96.35 (24.79)	98.62 (2.36)	117.94 (19.59)	129.03 (9.40)
222	Beer	1.39	9.56 (44.19)	13.61 (42.36)	23.66 (73.84)	30.16 (27.47)	42.84 (42.04)	51.32 (19.79)	64.11 (24.92)	64.90 (1.24)
222.3	Malt	1.90	164.00 (-7.87)	174.00 (6.10)	170.00 (-2.30)	212.00 (24.70)	216.00 (1.89)	230.58 (6.75)	279.26 (21.11)	298.83 (7.01)
223	Country liquor	1.52	195.82 (6.19)	198.82 (1.53)	214.17 (7.72)	241.66 (12.83)	279.59 (15.69)	298.46 (6.75)	361.47 (21.11)	386.81 (7.01)
224	Soft drinks and syrups	1.08	138.05 (-5.55)	138.05 (0.00)	144.94 (4.99)	147.34 (1.65)	149.76 (1.64)	159.87 (6.75)	193.62 (21.11)	207.19 (7.01)
263.6	Woollen carpets	10.47	138.23 (7.15)	150.85 (9.13)	159.73 (5.89)	174.06 (8.97)	181.23 (4.12)	168.85 (-6.83)	170.23 (0.82)	199.88 (17.42)
265	Ready made garments	35.40	189.20 (10.41)	210.42 (11.22)	235.91 (12.11)	282.19 (19.62)	339.75 (20.40)	387.43 (14.03)	468.33 (20.88)	508.98 (8.68)
280.2	Paper all kind	22.77	129.52 (2.25)	140.00 (8.09)	142.86 (2.04)	147.62 (3.33)	161.90 (9.67)	162.83 (0.57)	172.58 (5.99)	178.11 (3.20)
281.1 & 2	Corrugated box and card boxes board	2.12	161.85 (8.99)	173.29 (7.07)	286.48 (65.32)	313.22 (9.33)	261.91 (-16.38)	370.67 (41.53)	460.65 (24.27)	541.77 (17.61)
281.9	Cartons	1.76	350.89 (32.24)	319.43 (-8.97)	324.20 (1.49)	327.45 (1.00)	286.62 (-12.47)	162.11 (-43.44)	162.11 (0.00)	160.14 (-1.21)
285.3	Books	1.47	84.65 (-2.81)	90.48 (6.89)	21.42 (-76.33)	27.09 (26.47)	22.71 (-16.17)	23.38 (2.95)	25.40 (8.64)	26.83 (5.65)

TABLE-3.1 (Concl'd)

**Index of Industrial Production in Haryana
Use - Based Classification at Item Level**

			Base year- 1993-94=100							
NIC Code 1987	Items	Weight	Index							
			1999-2000	2000-01	2001-02	2002-03	2003-04	2004-05	2005-06	2006-07*
1	2	3	4	5	6	7	8	9	10	11
285.3	Periodicals & journals	1.39	192.94 (-3.19)	192.44 (-0.26)	196.75 (2.24)	198.27 (0.77)	193.36 (-2.47)	199.06 (2.95)	216.30 (8.66)	228.52 (5.65)
291.0	Leather shoes and chappals	8.09	144.44 (5.40)	155.56 (7.70)	170.37 (9.52)	181.48 (6.52)	192.59 (6.12)	198.81 (3.23)	225.77 (13.56)	261.46 (15.81)
304.2	Tablets	1.97	151.13 (-2.88)	152.53 (0.93)	160.06 (4.94)	143.64 (-10.26)	174.63 (21.57)	187.99 (7.65)	233.48 (24.20)	243.73 (4.39)
304.2	Capsules	1.69	269.73 (55.96)	288.63 (7.01)	248.20 (-14.01)	250.16 (0.79)	371.04 (48.32)	545.23 (46.95)	797.90 (46.34)	924.76 (15.90)
304.2	Syrups	0.66	349.67 (5.25)	276.91 (-20.81)	212.20 (-23.37)	345.32 (62.73)	455.77 (31.98)	495.90 (8.80)	672.97 (35.71)	681.25 (1.23)
305.1	Soaps	3.48	148.26 (17.20)	184.04 (24.13)	247.93 (34.72)	230.16 (-7.17)	307.08 (33.42)	182.74 (-40.49)	183.05 (0.17)	199.78 (9.14)
305.7	Shampoos	0.65	157.80 (17.94)	224.00 (41.95)	224.00 (0.00)	211.00 (-5.80)	395.10 (87.25)	571.91 (44.75)	783.51 (37.00)	836.62 (6.78)
311.1 & 2	Rubber shoes & chappals	9.29	125.71 (2.32)	142.86 (13.64)	164.44 (15.11)	230.48 (40.16)	222.54 (-3.44)	183.22 (-17.67)	195.84 (6.89)	196.19 (0.18)
321.1	Glass sheets	6.19	103.00 (11.42)	116.92 (13.51)	129.77 (10.99)	135.13 (4.13)	132.16 (-2.20)	127.80 (-3.30)	140.07 (9.60)	151.75 (8.34)
321.3	Bottles & Jars	5.21	107.48 (11.97)	111.33 (3.58)	115.59 (3.83)	143.57 (24.21)	163.57 (13.93)	158.17 (-3.30)	173.36 (9.60)	187.81 (8.34)
323.1	Crockery / kitchen ware	1.07	362.94 (-2.06)	407.94 (12.40)	323.53 (-20.69)	291.18 (-10.00)	291.47 (0.10)	318.07 (9.13)	318.07 (0.00)	338.21 (6.33)
323.2	Sanitary Ware	2.03	99.38 (0.44)	103.63 (4.28)	96.77 (-6.62)	89.57 (-7.44)	89.74 (0.19)	91.71 (2.20)	100.75 (9.86)	102.82 (2.05)
363.3	Flourescent tubes	0.93	437.42 (23.38)	547.09 (25.07)	589.73 (7.79)	607.41 (3.00)	598.58 (-1.45)	618.28 (3.29)	630.20 (1.93)	517.44 (-17.89)

***Provisional**

Note :- Figures in brackets indicate percentage increase / decrease over the previous year.