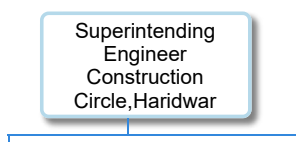
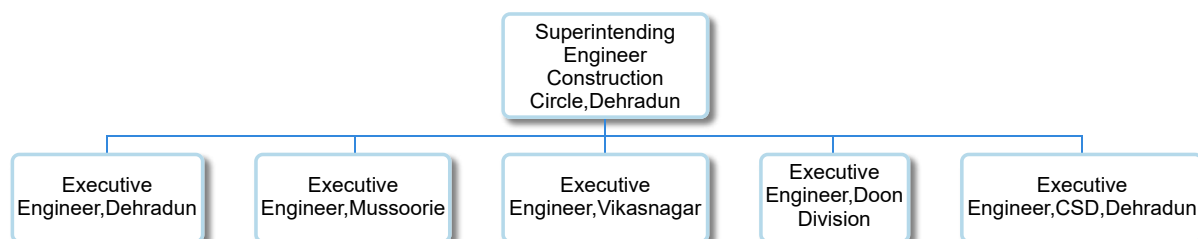
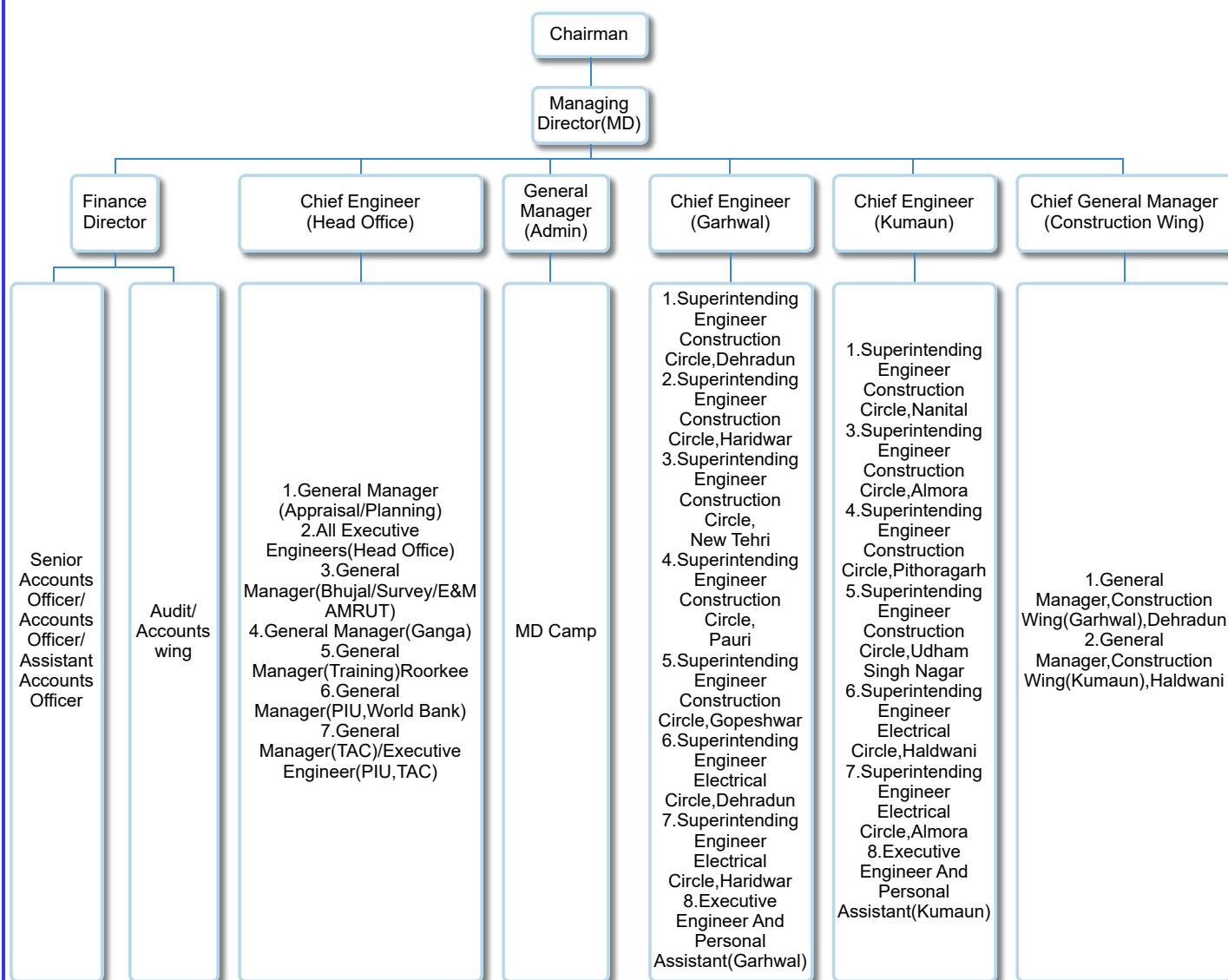




Uttarakhand PeyJal Sansadhan Vikas Evam Nirman Nigam  
 उत्तराखण्ड पेयजल संसाधन विकास एवं निर्माण निगम  
*Management Information System*

[Back](#)

### Structure of Uttarakhand PeyJal Sansadhan Vikas Evam Nirman Nigam



Executive  
Engineer,HaridwarExecutive  
Engineer,PIU,AMRUT,RoorkeeSuperintending  
Engineer  
Construction  
Circle,New  
TehriExecutive  
Engineer,DevprayagExecutive  
Engineer,GhansaliExecutive  
Engineer,ChambaExecutive  
Engineer,Muni  
ki RetiExecutive  
Engineer,New  
TehriExecutive  
Engineer,UttarakashiSuperintending  
Engineer  
Construction  
Circle,PauriExecutive  
Engineer,KotdwarExecutive  
Engineer,PauriExecutive  
Engineer,SrinagarSuperintending  
Engineer  
Construction  
Circle,GopeshwarExecutive  
Engineer,RudraprayagExecutive  
Engineer,GopeshwarExecutive  
Engineer,KaranprayagSuperintending  
Engineer  
Electrical/Mechanical  
Circle,DehradunExecutive Engineer  
Mechanical,DehradunExecutive  
Engineer  
Mechanical,New  
TehriSuperintending  
Engineer  
Electrical/Mechanical  
Circle,HaridwarExecutive Engineer  
Mechanical,HaridwarExecutive  
Engineer  
Mechanical,KotdwarSuperintending  
Engineer  
Construction  
Circle,NanitalExecutive  
Engineer,BhimtalExecutive  
Engineer,RamnagarExecutive  
Engineer PIU  
AMRUT,HaldwaniExecutive  
Engineer PIU  
AMRUT,KashipurExecutive  
Engineer,US  
NagarExecutive  
Engineer,KhatimaSuperintending  
Engineer  
Construction  
Circle,Almora

Executive  
Engineer,AlmoraExecutive  
Engineer,RanikhetExecutive  
Engineer,BhikiyasainExecutive  
Engineer,BageshwarSuperintending  
Engineer  
Construction  
Circle,PithoragarhExecutive  
Engineer,PithoragarhExecutive  
Engineer,GangolihatExecutive  
Engineer,DidihatExecutive  
Engineer,ChampawatSuperintending  
Engineer  
Construction  
Circle,Udham  
Singh NagarExecutive  
Engineer,Udham  
Singh NagarExecutive  
Engineer,KhatimaSuperintending  
Engineer  
Electrical/Mechanical  
Circle,HaldwaniExecutive Engineer  
Mechanical,HaldwaniExecutive  
Engineer  
Mechanical,AlmoraGeneral  
Manager(Garhwal)  
Construction  
Wing,DehradunProject  
Manager,E/M  
Unit,DehradunProject  
Manager  
Construction  
Unit,DehradunProject  
Manager  
Construction  
Unit,ReshikeshProject  
Manager  
Construction  
Unit,ChambaProject  
Manager  
Construction  
Unit,SrinagarProject  
Manager  
Construction  
Unit,VikasnagarProject  
Manager  
Temp.  
Construction  
Unit,PauriProject Manager  
Temp. Construction  
Unit(Khel),DehradunGeneral  
Manager(Kumaun)  
Construction  
Wing,HaldwaniProject  
Manager  
Construction  
Unit,HaldwaniProject  
Manager  
Construction  
Unit,RanikhetProject Manager  
Construction  
Unit,LohaghatProject  
Manager  
Construction  
Unit,USNagarProject  
Manager  
Construction  
Unit,PithoragarhGeneral  
Manager  
PIU World  
BankExecutive  
Engineer FIU,  
DehradunExecutive  
Engineer FIU,  
HaridwarExecutive  
Engineer FIU,  
HaldwaniGeneral  
Manager(Ganga)

