



सशक्त पंचायत सतत् विकास



Panchayati Raj



सत्यमेव जयते



Village with Good Governance

National Module on PANCHAYAT DEVELOPMENT INDEX (PDI) for Block Level Master Trainers

LOCAL INDICATOR FRAMEWORK

9

Themes

144

Targets

577

Indicators

688

Data Points



Poverty Free Village



Healthy Village



Child Friendly Village



Water sufficient Village



Clean and Green Village



Village with Self-Sufficient Infrastructure



Socially Secured Village



Village with Good Governance



Women Friendly Village



सशक्त पंचायत सतत् विकास

Kerala Institute of Local Administration (KILA)
Thrissur, Kerala

Contents

1. About the Course	
1.1 Introduction and overall design on theme.....	02
1.2 Training Objectives.....	03
1.3 Training Sessions.....	03
1.4 Duration of the training.....	03
1.5 Target groups.....	03
1.6 Training venue.....	03
1.7 Training methods.....	03
1.8 Trainers.....	03
1.9 Training materials.....	04
2. Session 1 - Panchayat Development Index (PDI) and Local Indicator Framework (LIF)	05
3. Session 2 - PDI Framework - Computation and Data Validation Mechanism...	14
4. Session 3 - Handholding for Block Level Master Trainers.....	24
5. Appendix 1: Session 1	38
6. Appendix 2: Session 2	42

Module on Panchayat Development Index (PDI)

Introduction and overall design on theme

Panchayat Development Index will provide a baseline data to set local targets & local action points in preparation of thematic Gram Panchayat Development Plan by converging different resources through structured institutional mechanisms involving all stakeholders. It is envisaged to evolve an index framework to assess the ground realities of status of development in Panchayat and the efforts made by the local Governments in implementing the Programme and in realizing the developmental targets. The Panchayat Development Index (PDI) is a Multi-domain and multi-sectoral index that is intended to be used to assess the overall holistic development, performance & progress of panchayats.

PDI will be calculated on 577 Local Indicators on 9 themes, 144 Local Targets and 688 unique data points to monitor the progress of LSDGs.

The Panchayat Development Index (PDI) takes into account various socio-economic indicators and parameters to gauge the well-being and development status of the local communities within the jurisdiction of a panchayat. The index typically considers factors such as:

- **Infrastructure:** Availability of basic amenities like roads, electricity, water supply, sanitation facilities, etc.
- **Health and Education:** Access to healthcare services, educational institutions, literacy rates, and enrolment in schools.
- **Economic Indicators:** Income levels, employment opportunities, agricultural productivity, and economic activities.
- **Social Indicators:** Poverty rates, gender equality, social inclusion, and overall quality of life.
- **Governance and Administration:** Efficiency and transparency of local governance, delivery of public services, and citizen participation.
- **Environmental Sustainability:** Measures related to ecological balance, conservation, and sustainable practices.

The Panchayat Development Index shall provide public representatives, policy makers, government agencies, and local authorities with valuable insights into the areas that require attention for improvement within the rural areas under the jurisdiction of the panchayats. It helps in identifying disparities, achievement of development goals, and formulating targeted

policies and interventions to enhance the overall well-being and quality of life of rural communities. The specific indicators and weights used in calculating the Panchayat Development Index can vary based on the goals and priorities of the governing body or organization that develops and utilizes the index.

Training Objectives:

- Capture the development and movement in development at grass root level.
- Ensure rapid transformation of Panchayats by focused intervention in 9 thematic areas.
- Monitor outcome indicators on regular basis in Key sectors.
- Generate positive competition among Panchayats.
- Strengthen PRIs by participatory approach in Planning process.
- Keep the Elected Representatives and PR functionaries motivated towards outcome indicators in their respective areas.

Training Sessions:

- 1. Panchayat Development Index (PDI) and Local Indicator Framework (LIF)**
- 2. PDI Framework - Computation and Data Validation Mechanism**
- 3. Handholding for District Level Master Trainers**

Duration of the Training: 1 Day

Target groups: Block Level Master Trainers

Training venue: As identified by each state

Training methods:

Interactive methods including interactive lecture, brainstorming, Sub Group discussions, guided reading and good practice sharing, cases studies, role plays, group activities, video/audio clips etc.

Trainers: District level Master Trainers

Training materials:

1. Training module
2. Training handbook
3. User Manual for Facilitators

Session 1: Panchayat Development Index (PDI) and Local Indicator Framework (LIF)

Session Objective:

- To understand PDI and its key components and Indicators
- Examine how PDI addresses the need for a comprehensive and localized development measurement.
- Demonstrate the process of aligning and localizing SDGs at the Panchayat level.
- Discuss the role of data collection, analysis, and verification in ensuring accurate measurements.
- Discuss the role of incentivization in encouraging Panchayats to actively participate in PDI implementation.

Duration: 50 Minutes

Session Plan

Sl. No	Sub topics of content	Duration	Method	Tools
1	Panchayat Development Index <ul style="list-style-type: none"> • Definition - PDI • Imperatives • Evaluation Process • Key Components and Indicators • PDI-Life Cycle Development 	10 min	Interactive Lecture	Slides 2 - 10 Note 1
2	Localizing SDGs <ul style="list-style-type: none"> • PDI – LIF Theme 	10 min	Interactive Lecture	Slides 11 - 13 Note 2
3	Incentivization and CB & T <ul style="list-style-type: none"> • Incentivization Process • Importance of CB & T 	10 min	Interactive Lecture	Slides 14
4	Role of Block Admin, Facilitators and Gram Panchayats in PDI	20 min	Lecture	Slide 15 - 17 Note 3
5	Suggestive Improvements and Takeaways	10 min	Interactive Lecture	

Note 1: The facilitator discusses about the formulation of PDI as well as a brief outline of the index touching upon the various facets.

Note 2: The facilitator asks the participants if they are aware of LIF

Answers from all the participants are welcomed and then the trainer speaks in detail and connects it with PPTs.

Note 3: The facilitator also throws light on the different aspects of SDGs, basic processes involved in the process like data collection, data verification etc and also discusses about the role of Block Admin, Facilitators and Gram Panchayats in PDI

Find **Appendix 1** for the contents.

Evaluation

1. PDI is a composite Index that measures the performance of panchayats in achieving the localization of
 - a) Panchayati Raj
 - b) SDGs
 - c) Incentivization
 - d) NITI Aayog

2. Which one is not in the basic imperatives of PDI?
 - a) Better quality of service
 - b) Optimum utilisation of resources
 - c) Data sharing
 - d) Informed strategies for attaining SDGs

3. Which one is not included in the 9 themes of PDI?
 - a) Child friendly village
 - b) Clean and green village
 - c) Socially just and socially secure
 - d) Institutionalisation of PDI

4. National commitment to achieving SDGs by 2030 involving NITI Aayog, MOSPI, State Department, PRI and _____

- a) UNCRC
- b) Union ministries
- c) Ministry of Ayush
- d) Ministry of Communications

5. Pragmatic approach to attain SDGs; find the correct one.

- a) 17 Goals, 169 Targets, 231 Indicators
- b) 17 Goals, 75 Targets, 118 Indicators
- c) 9 Themes, 144 targets, 577 indicators

6. Which one is not included in evidence based PDI?

- a) Incentivisation on developmental progress
- b) Evidence based assessment
- c) Non realistic assessment of progress
- d) Non-Interstate comparison

7. Re-arrange the PDI life cycle development.

LIF— Index Design-- Data Mapping-- Development of PDI-- Finalisation of PDI--
Validation of PDI Index—State-- Release of PDI committee report and national
workshop—Data Sharing

8. How many local indicators included in the PDI report?

- a) 144
- b) 577
- c) 688
- d) 118



Session - 1



Panchayat Development Index (PDI)

Imperatives

- ✓ Need for Recognizing GPs as RLBs an effective units of Governance
- ✓ GPs as unit of Planning and execution of schemes
- ✓ Better quality of service delivery
- ✓ Optimum Utilization of resources
- ✓ Informed Strategies for attaining SDGs
- ✓ Need for Evidence Based -
 1. Assessment of Performance of GPs
 2. Assessment of Progress of Developmental Efforts
 3. Achievement Gaps
 4. Planning – for Quality GPDP
 5. Allocation of resources – FFC & other resources



Localization of Sustainable Development Goals in Panchayats



संसदक पंचायत सतत विकास

- National Commitment to achieving SDGs by 2030 involving NITI Aayog, MoSPI, Union Ministries, State Department and PRIs
- Panchayats are pivotal in attaining the 2030 Agenda of SDGs
- MoPR taking forward the goal of attaining SDGs with PRIs through Localization of SDGs through 9 themes
- Thematic approach of LSDGs resonates with the Panchayats to achieve global goals at local levels

Panchayat Development Index - Rationale



सशक्त पंचायत सतत विकास

- Measure the progress of LSDGs in Panchayats
- Scale up the visibility of development levels in rural India
- Identifying deficit at the last miles for achieving SDGs
- Ministry constituted an Expert Committee to develop mechanisms for computation of PDI to pave outcome-oriented development goals at Panchayats
- Committee suggested mechanisms of PDI computation based on local indicators to measure incremental progress through scores achieved by Panchayat and grade them based on their performance towards the achievement of LSDGs
- Also discussed the initiatives of some of the States

Panchayat Development Index (PDI)

To capture the development and movement in development at the grass root level.

To ensure rapid transformation of Panchayats by focused intervention in key areas.

Aims to generate positive competition among Panchayats.

Strengthening PRIs by participatory approach in Planning process

Strengthening capacity of BDC chairpersons/Sarpanchs; sensitizing them about other key areas of development viz. Health, Education, Agriculture, Skill etc instead of Rural Development sector only.

To adopt multi-sectoral approach through convergence, integration, and focused attention.

Objective of PDI



Provides a basis for evidence-based policy making at all levels of development & strengthen grassroots democracy

Torchbearer for estimating GP level performance based on local indicators of 9 themes & trigger a spirit of competition among the Gram Panchayats

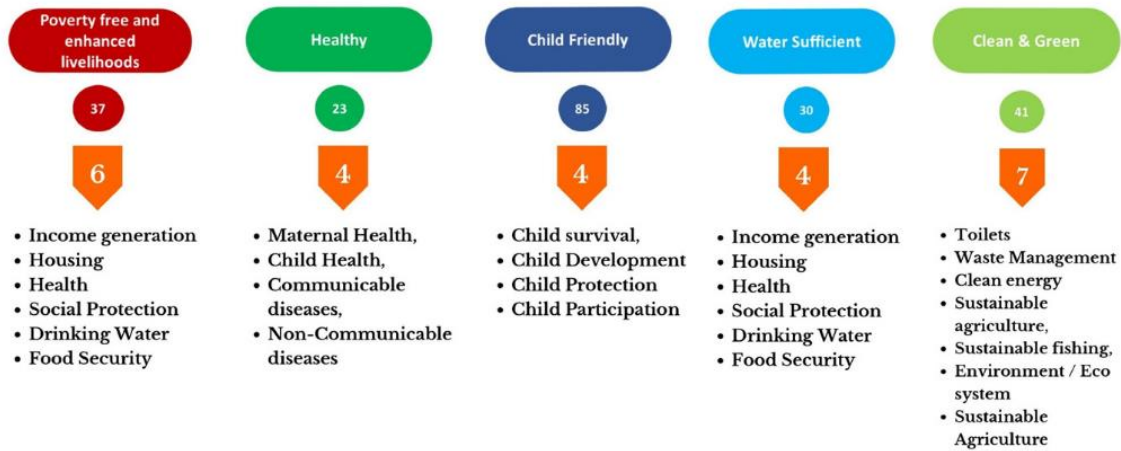
Matrix to monitor the incremental progress towards achievement of SDGs

Baseline to analyze the current status & set local targets on actionable points with measurable indicators for Panchayats

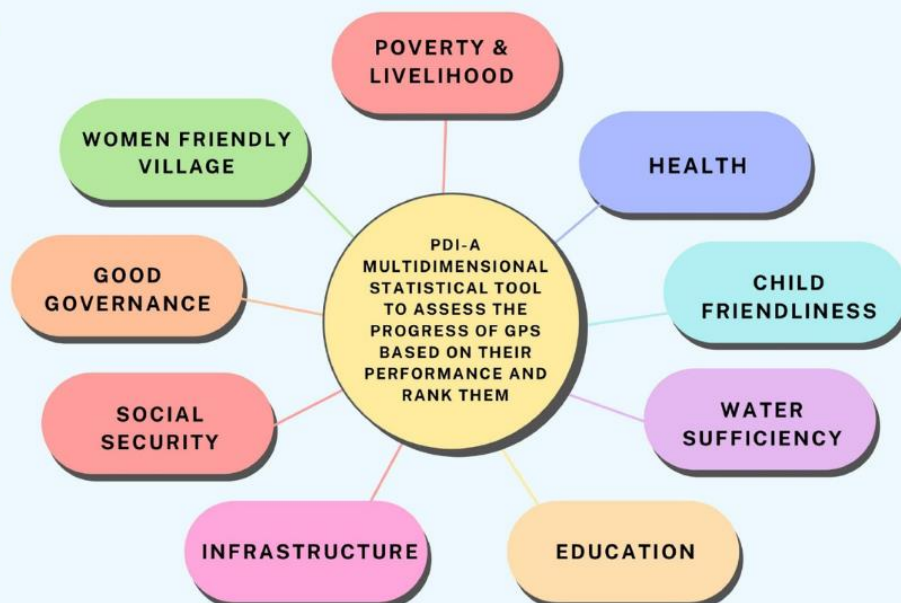
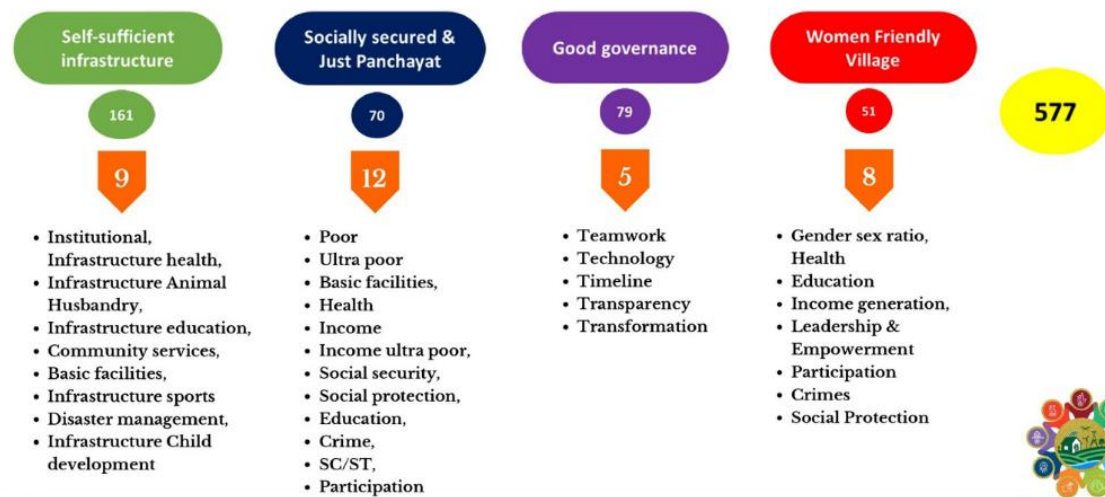


सशक्त पंचायत सतत विकास

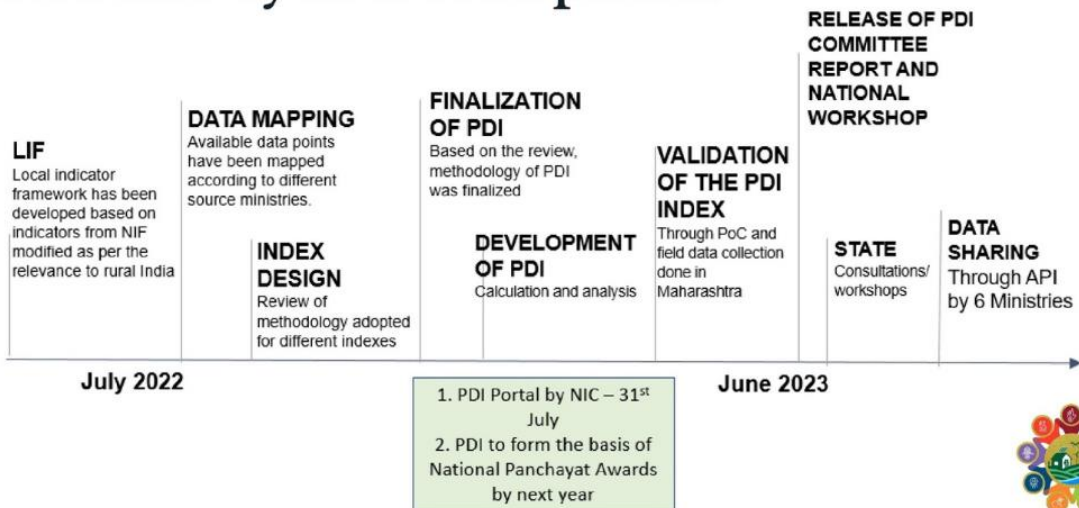
PDI GROUPED INDICATORS



PDI GROUPED INDICATORS



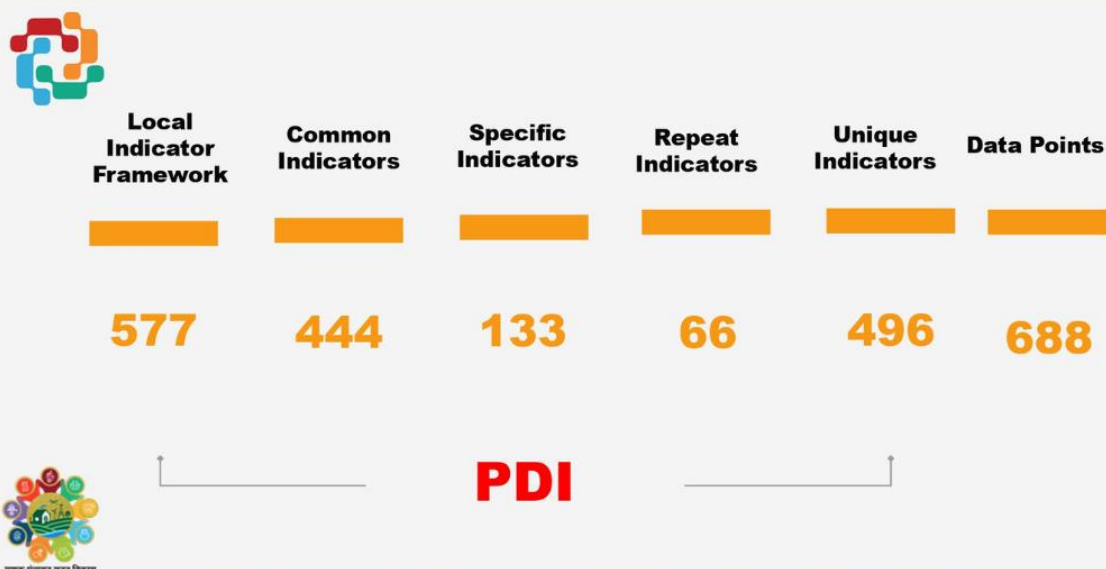
PDI Life-cycle Development



Pragmatic Approach to attain SDGs

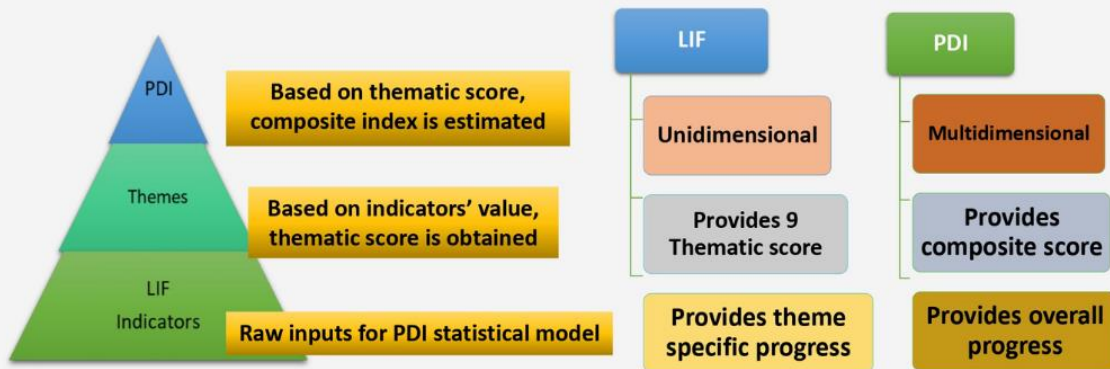


Architect of Local Indicator Framework





PDI – LIF-Theme



Incentivization and CB&T



Block Admin Functions



National Panchayat Awards

- PDI will be used as a tool for incentivization exercise by MoPR
- States can also use this evidence-based system for incentivization of Panchayats

Capacity Building & Training for PDI

- Intensive CB&T Exercise through network of SIRDs/PR Institutions
- To start with, YASHDA to train the SLMTs



- Register facilitators.
- Assign Panchayats to Facilitators.
- Review data submitted by GPs
 - Approve, digitally sign and submit the data for PDI calculation
 - Revert back the data to GP for corrections, if any
 - Correction of data entered by GP / facilitator
 - Monitor progress using dashboards
 - View PDI scores of GPs
 - Over-all
 - Thematic





Facilitator - Functions

- Take printout of data format from GP
- Shall download the App
- Register on App
- Visit field office
- Seek data related to the concerned field office
- Enter the data on paper format, get it stamped by concerned officer.
- Enter the data on App
- Take a geo-tagged, geo-time stamped photo of signed data format.
- Take a geo-tagged photo of office
- Submit the signed format to GP.



Gram Panchayats - Functions

- Shall view the data pulled from
 - Portal / Applications of line ministries.
- Shall enter the data items not available online.
- Shall review the data captured by the facilitators using mobile App.
- Shall submit the data for validation and final submission to higher office.
 - Digitally sign based submission
- Shall view the scores and index of GP.
 - Over all score.
 - Thematic score.



सशक्त पंचायत सतत् विकास

THANK YOU

Session 2: PDI Framework - Computation and Data Validation Mechanism

Session Objective

- To develop an overall understanding of the PDI Framework
- To provide participants with a comprehensive understanding of the role of stakeholders in utilizing PDI for maximising sustainable development

Duration: 1 hour 25 mins

Session Plan:

Sl. No	Sub topic of the Content	Duration	Method	Tools
1	Data Collection <ul style="list-style-type: none"> • Evaluation • Analysis • Verification Data validation	15 min	Interactive Lecture	Slides 2 - 12
2	Approach for Developing PDI	10 Mins	Lecture	Slide 13 Note 1
3	Proposed Framework for PDI calculation – An introduction	15 min	Interactive Lecture	Slide 14
4	Stages of PDI Calculation	5 min	Interactive Lecture with ppt	Slide 15
5	Data Management and Validation Capacity building for Data collection at the Panchayat Level	15 min	Brainstorming Interactive Lecture	Slides 16 - 18 Note 2
6	Weightage of Indicators at different levels	10 min	Brainstorming Interactive Lecture	Slide 19 Note 3
7	Computation of PDI Score for Panchayats Calculation of Theme Wise score Computation of PDI Score	15 min	Brainstorming interactive lecture	Slide 20 Note 4

Note 1: The facilitator asks the participants to discuss what they understand about the PDI Framework. Based on this discussion, the trainer opens the floor for discussion on how to develop the right approach for implementing PDI.

Note 2: The facilitator asks the participants a set of questions

- Existing mechanisms for Data collection at the Panchayat level
- The Training Module for the Data collection process

Note 3: Weights assigned for different levels are discussed (Equal Weights upto GP Level and Population weights above GP Level).

Note 4: A brief mention on the calculation of Thematic scores for PDI calculation followed by the computation of PDI based on 9 themes

Find **Appendix 2** for the contents.

Evaluation

1. Characteristics of PDI

- | | |
|------------------------------|------------------------|
| I. Evidence based assessment | IV. Better method for |
| II. Evidence based planning | Incentivization on |
| III. Interstate comparison | developmental progress |
| a) All of the above | c) 3 and 4 |
| b) 1, 2 and 4 | d) 4 only |

2. Which is NOT an approach for developing PDI?

- Identify common indicators for inclusion in assessment of GPs
- Identify Indicators applicable based on situation of GP
- Data collection for computation of PDI
- Individualization of raw indicator value

3. PDI frameworks are listed below. Find the exceptional one?

- | | |
|-----------------------|--------------|
| a) Data visualization | d) Themes |
| b) Data analysis | e) Goals |
| c) Data source | f) Frequency |

4. Arrange the steps in the computation of PDI.
 - I. Identify target values
 - II. Decide the methodology
 - III. Assign weightages
 - IV. Formulation of theme wise GP score
 - V. Normalization of row indicator value

5. Data validation for PDI compilation would require involvement at various levels. Find the odd one?

a) Panchayat level	d) District/state level
b) Taluk level	e) Central level
c) Block level	

6. List out the steps in PDI calculation in the correct order
 - Step1- Weightage of indicators
 - Step2- Normalisation of raw values
 - Step3- Compilation of raw values on the indicators
 - Step4- Calculation of theme wise GP score

7. Re-arrange the steps of data validation for CPI by MoSPI.
 - I. Data is entered into CPI portal developed by NIC
 - II. Data is entered by primary workers from field offices across the country
 - III. MoSPI at Central level uses different diagnostic tools for data validation before calculating CPI
 - IV. Supervisory officers have to compulsory validity in the data

8. Which of the following are criteria of indicators selection from LIF?

a. Availability of recent data	
b. Data points considered in national level SDG indicators	
c. Data should be available for at least 50% of the states	
d. Relevance to the localised concept	
e. Data points must not be endogenous	
• a, b, d	• d, e
• b, c	• All of the above



Session - 2

Panchayat Development Index



सर्वशिक्षा मिशन

PDI Framework - Computation and Data Validation Mechanism



सर्वशिक्षा मिशन

Data Source

- Indicators to be captured from other Ministries
- Indicators to be collected from field survey/GP records

Ministry wise Data source wise list of indicators

MoE	16		
DDWS	15		
MoWCD	5		

Ministry wise Data source wise list of indicators

MoRD

135



MOPR

55



DOLR

1



PDI Computation

Data cleaning
and rectification

1

To clean conceptually wrong entries and invalid entries anomalies

Indicator
calculation
value &
normalization

2

LIF indicator values were derived from clean data and normalized on a 0-100 scale

Thematic score

3

Average of the normalized indicator values was calculated to determine thematic score of a GP

4

PDI score

Geometric mean of all 9 thematic scores was calculated for arriving at PDI score of a GP



PDI Computation

Assignment of
weights

5

All LIF themes and indicators within a theme assigned equal weights

6

Block & State
PDI

Weighted arithmetic mean of GP PDI and Block PDI were considered for Block & State PDI respectively



Measuring of Performance

- A positive shift in the composite score from the baseline score indicates improvement in overall performance of that GP
 1. %age Change from baseline
 2. %age Progress towards target
 3. %age Change from previous year
- Committee not in favour of Rankings but grades like in SDGII
- Annual Exercise

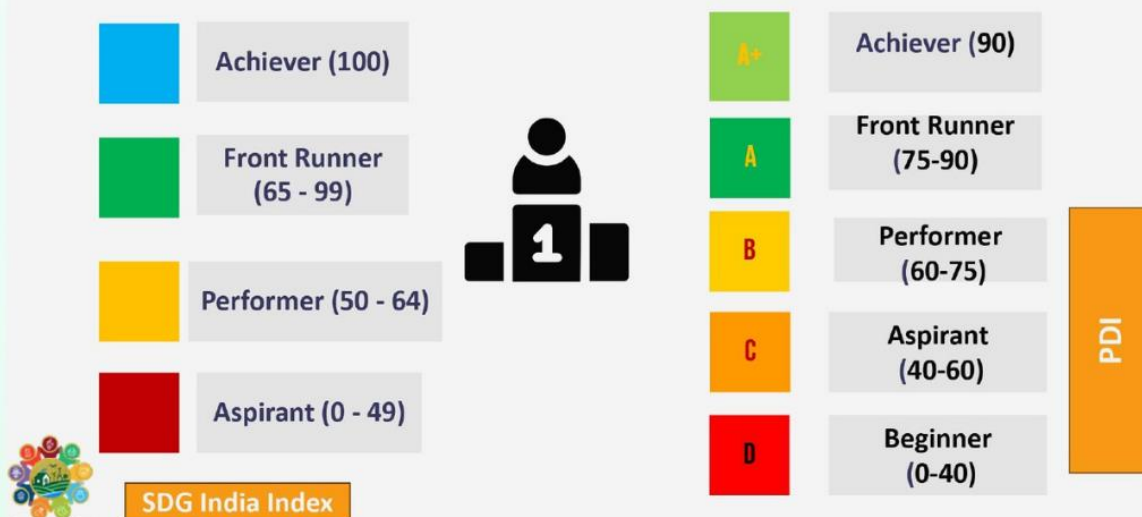


Block, District and State aggregation of GP PDI

- The LIF presently is of Indicators at GP level
- The outcomes can be enhanced by support from BP, ZP, District administration and State.
- How well the GPs are placed in the Block and District can be reflected in the Block and District level aggregation of PDI score



Grading : SDG India Index vs. PDI





Why PDI?



- Evidence Based Assessment – realistic assessment of Progress
- Evidence Based Planning leading to better GDP preparation
- Help in setting ambitious targets if GPs are nearing achievement of National / State targets
- Better method for Incentivization on developmental progress
- No Inter-State comparison planned as of now
- States/Districts can compare GPs on LSDG (thematic) and composite PDI scores – prioritizing the sectors and GPs for development
- States can compare District/Blocks for prioritizing development

Data Collection & Validation

- No duplication of efforts in data collection
- Collection of new data points at GP level by GP Officials from FLWs
- All Departments to facilitate data collection by GPs
- First validation at Block level and then by District and State under the supervision of Department of Planning & Statistics
- Creation of dedicated cell for data validation at Block level
- Department of Planning and Statistics at State level to act as custodian of data and its validation
- Ministries & Departments to collect LGD local body seeded data in future for ease of sharing



PDI Data Sharing

- Though MoPR is leading and anchoring PDI, but it is a **Common Property Resource**.
- Data contributing Ministries/ Department can get a dedicated login to view & download.
- The data generated on PDI Portal can be used by any Govt. Agency
- Requests for data sharing from Ministries/State Departments will be considered on priority and NIC will endeavour for seamless online data sharing.

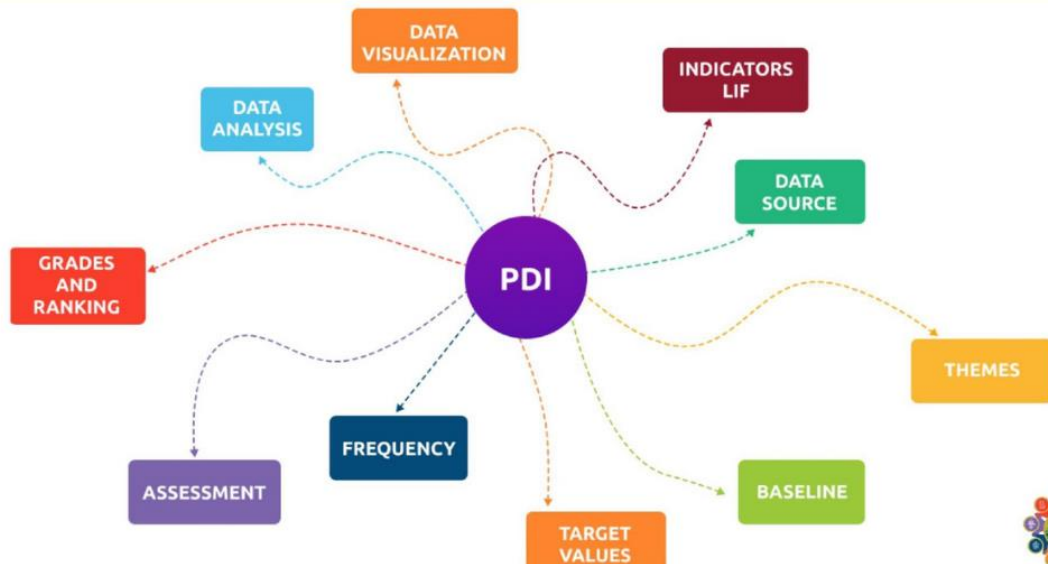


Approach for Developing PDI

- Decide the methodology for computation of PDI
- Assign Weightages
- Identify Target Values
- Normalization of raw indicator value
- Formulation of Theme-wise GP Score



PDI Framework



Stages of PDI Calculation

Step 1: Compilation of raw data on the LIF indicators

Step 2: Weightage of indicators at different level

Step 3: Normalization of raw values

Step 4: Calculation of theme-wise GP's score

Step 5: Computation of PDI for GP



Data Validation Mechanism for PDI



- Data validation i.e. ensuring accuracy and quality of data before processing it for PDI calculation
- A large data set would be required for PDI compilation
 - 2.69 lakh Gram Panchayats
 - 416 LIF Indicators and 161 sub-indicators
 - 688 data points
- Data validation will play a crucial role in establishing the quality and usability of PDI

Data Validation for CPI by MoSPI



- ❖ MoSPI releases All India Consumer Price Index and corresponding inflation rate every month
 - Monthly data is collected from around 2,300 villages/urban markets
 - Around 5.5 lakh data points are validated every month for Index calculation

Data Validation

- ❖ Data is entered by primary workers (JSO) from field offices across the country
- ❖ The data is entered into the CPI Portal developed by NIC
 - NIC Portal has several data entry alerts
- ❖ Supervisory officers (SSO) have to compulsorily validate the data
- ❖ MoSPI at central level uses different diagnostic tools for data validation before calculating CPI

Data Validation for PDI



- ❖ Data validation for PDI compilation would require at various level
- ❖ **Panchayat level**
 - Panchayat level data need to be carefully transmitted into the NIC portal
- ❖ **Block level**
 - Block level officer need to validate data of all the Panchayats under his/her jurisdiction before sending it to District level
- ❖ **District/ State level**
 - District/ State level officer need to validate data of all the blocks
- ❖ **Centre level**
 - Finally, the PDI compilation team would have to use analytical tools to ensure the data quality

Weightage of Indicators at different levels



Ascertaining weights at different level

- Equal weights have been considered up to GP level
- Population weight have been taken above GP level
- Block / District/ State

19

Computation of PDI Score for Panchayats



Calculation of theme-wise GP's score

Arithmetic Mean of the indicator values for arriving at Thematic score of a GP

Indicator	1	2	3	4	5	Theme score
Score	88	72	81	65	96	80.4

Computation of PDI for GP

Geometric mean of the nine thematic scores to reach PDI of the GP

Theme	1	2	3	4	5	6	7	8	9	PDI
Score	81	95	75	86	78	69	82	86	79	81

20



सशक्त पंचायत सतत् विकास



THANKS!

Session 3: Handholding for Block Level Master Trainers

Session Objective:

- To give an overview of PDI portal.
- To identify the Data source for each data point
- To explain about the process of field data collection.
- To gain first-hand experience on the working of the data portal

Duration: 3hr 40 mins

Session Plan

Sl. No	Sub topics of content	Duration	Method	Tools
1	Panchayat Development Index (PDI) Portal	15 mins	Interactive Lecture	Slides 2 – 3 Note 1
2	Hands on experiencing	1 hr 30 mins	Group Activity	Demonstration Note 2
3.	Process of Data Collection- From Tools to Training	15 mins	Interactive Lecture Method	Slides 4 – 12 Note 3
4.	Familiarisation of Data portal	1 hr	Lecture and Hands on Experience	Slides 13 - 22
5.	Different Committees for Data Collection and Validation	15 mins	Interactive Lecture method	Slides 23 - 28
6.	Role assignment of stakeholders at different levels	15 mins	Interactive Lecture method	Slides 29 - 34
8	Doubt Clearing Session	10 mins		

Note 1: The facilitator explains the PDI portal and asks them to form groups

Each Group consists of 5-6 members

Facilitator give the support for the Hands-on Training

Note 2: The facilitator gives the participants a detailed explanation on how to use PDI Portal and familiarise them with the various indices

Note 3: The Facilitator asks the attendees about their experiences on handling data and past field experiences.

The Facilitator then explains the tools briefly along with the proposed training module in a brief manner.

Evaluation

1.Re- arrange the steps of proposed sources of data for generation of the PDI.

- a) Step 1- Data entry at GP
- b) Step 2- Data to be collected by field survey
- c) Step 3- Pulled form applications of ministers

2.Which one of the following is not a proposed user of PDI portal?

- a) Primary users (GP secretary, Block /district admin ministers)
- b) Secondary users (GP representatives)
- c) Monitors- Progress monitoring, Data Review
- d) NIC state and District level teams

3.If primary data isn't available from ministries, what will be used as secondary source?

- a) Mission Antyodaya
- b) National rural livelihood mission
- c) State rural livelihood mission
- d) Conducting surveys

4.Re- arrange the Process of data collection in its order

- a) Available data source from GP Level
- b) Mission Antyodaya
- c) Standardised Indicators
- d) Identify the source of Indicators

5. Which of the following is NOT a step in the process of data collection and validation?

- a) Defining a research question
- b) Conducting a literature review
- c) Collecting primary data
- d) Analysing the data

6. What is the purpose of data validation?

- a) To ensure the accuracy and reliability of the data
- b) To summarize the data for presentation
- c) To analyse the data for patterns and trends
- d) To collect additional data points

7. Process of Data validation from various levels

- a) Panchayat (secretary)
- b) Block (BPO)
- c) District
- d) State
- e) Processing of data at PDI portal
- f) All of the above

8. Data Analysis is a process of?

- a) Inspecting data
- b) Cleaning data
- c) Transforming data
- d) All of the above

9. During a panchayat visit with whom do we have to correspond for data collection?

- a) Elected representatives
- b) Discussion with officials
- c) Discussion with implementing officers and other stakeholders
- d) Discuss with the senior citizens
- e) All of the above

10. Arrange steps in conducting gap analysis

- a) Identify the goals you want to achieve
- b) Identify the area to focus on
- c) Determine where you want to be in future
- d) Know your current state
- e) Understand the gaps between 2 states



सत्यमेव जयते



सराफ पंचायत सतन् विकास

Session - 3

Handholding for District Level Master Trainers

पंचायत विकास सूचकांक पोर्टल
Panchayat Development Index (PDI) Portal
Facilitating creation of a digital platform & ecosystem for focused implementation of interventions to achieve SDG 2030 agenda in rural India

1. PDI Committee Report • 2. Indicators • 3. Data Points • 4. Analysis / Master Data • 5. SDG Theme-wise Indicators •

Login

- Poverty Free Village
- Healthy Village
- Child Friendly Village
- Water Sufficient Village
- Clean and Green Village
- Village with Self-Sufficient Infrastructure
- Socially Secured Village
- Village with Good Governance
- Women Friendly Village

About PDI Portal

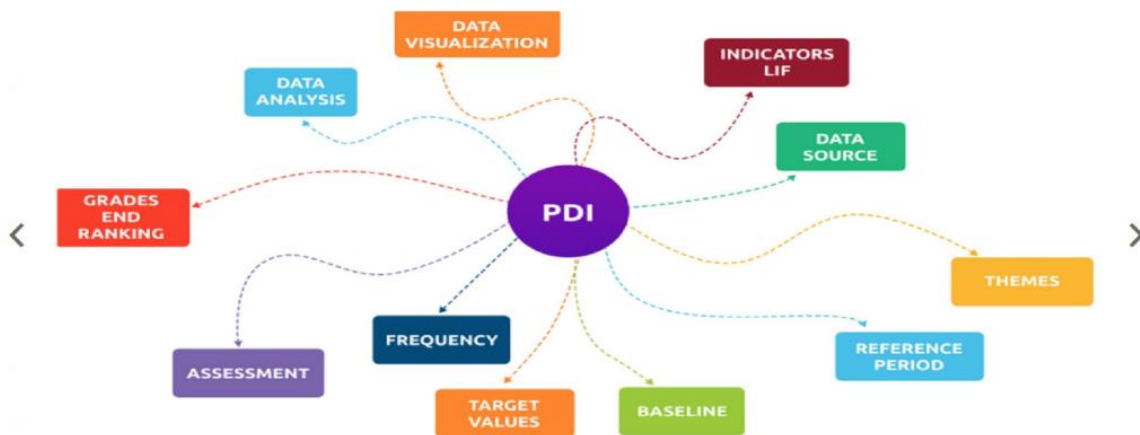
The Panchayat Development Index (PDI) is a Multi-domain and multi-sectoral index that is intended to be used to assess the overall holistic development, performance & ...

पंचायत विकास दर्पण पोर्टल | Panchayat Development Index (PDI) Portal

पंचायत विकास दर्पण पोर्टल
Panchayat Development Index (PDI) Portal
Facilitating creation of a digital platform & ecosystem for focused implementation of interventions to achieve SDG 2030 agenda in rural India

Instructions • User Guide • Help • Contact Us

Login



Distribution of materials to stakeholders and collection by field level collectors for reference and training purposes.

Data collection systems should be developed in the form of hard copies of forms or digitized formats, such as a mobile application or web portal

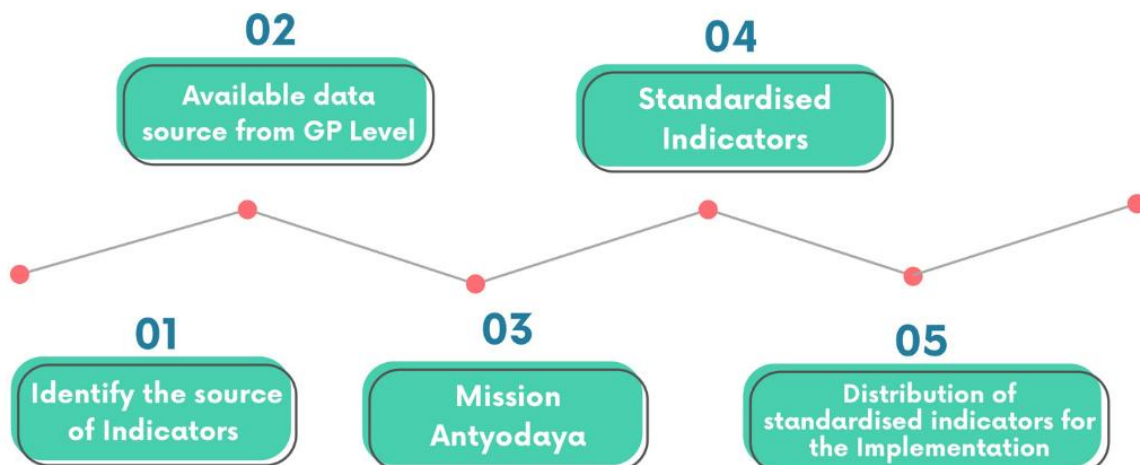
The data collection systems should be classified based on their parent or source agency



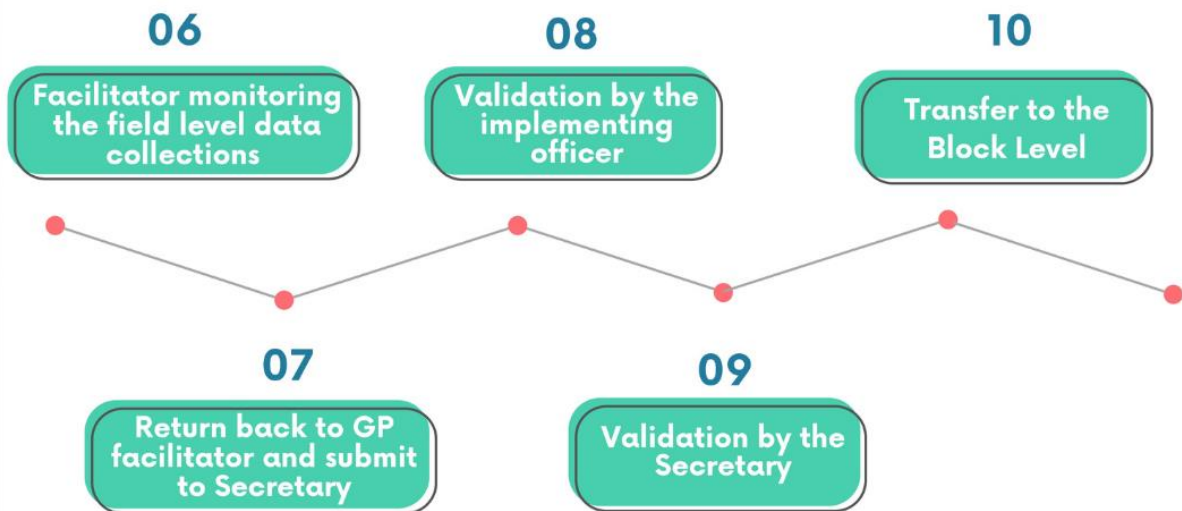
Field-level officials of respective line agencies (such as Anganwadi workers, Self-help group members, Veterinarians, etc.) should be granted access to the data collection systems.

This facilitates direct input of relevant data by those in the field

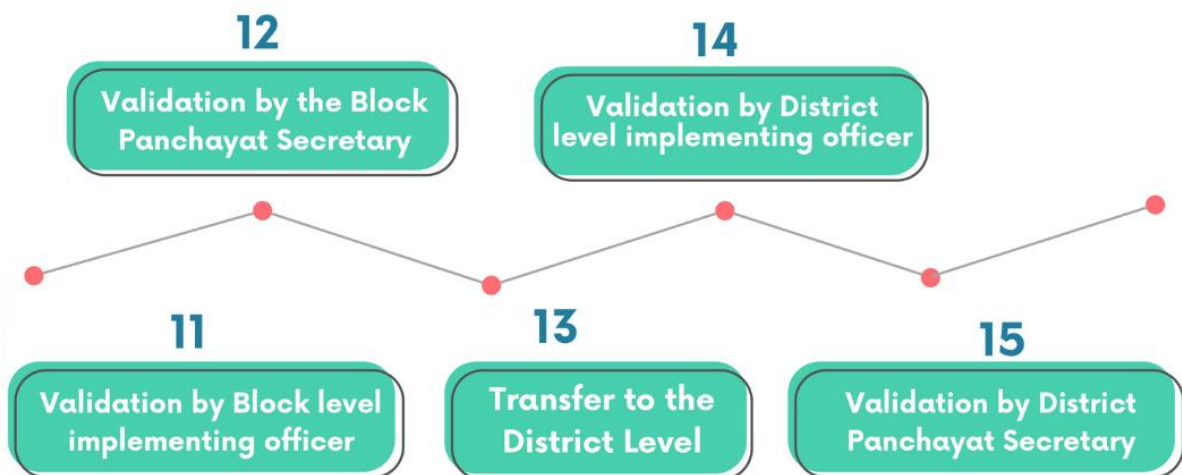
PROCESS OF DATA COLLECTION



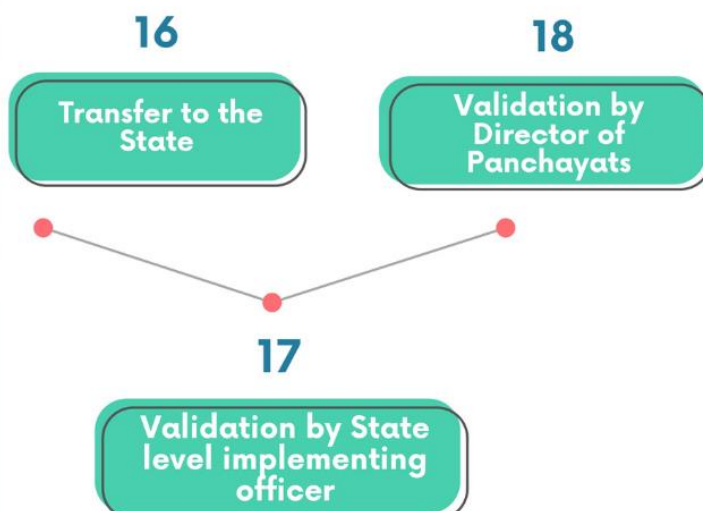
PROCESS OF DATA COLLECTION



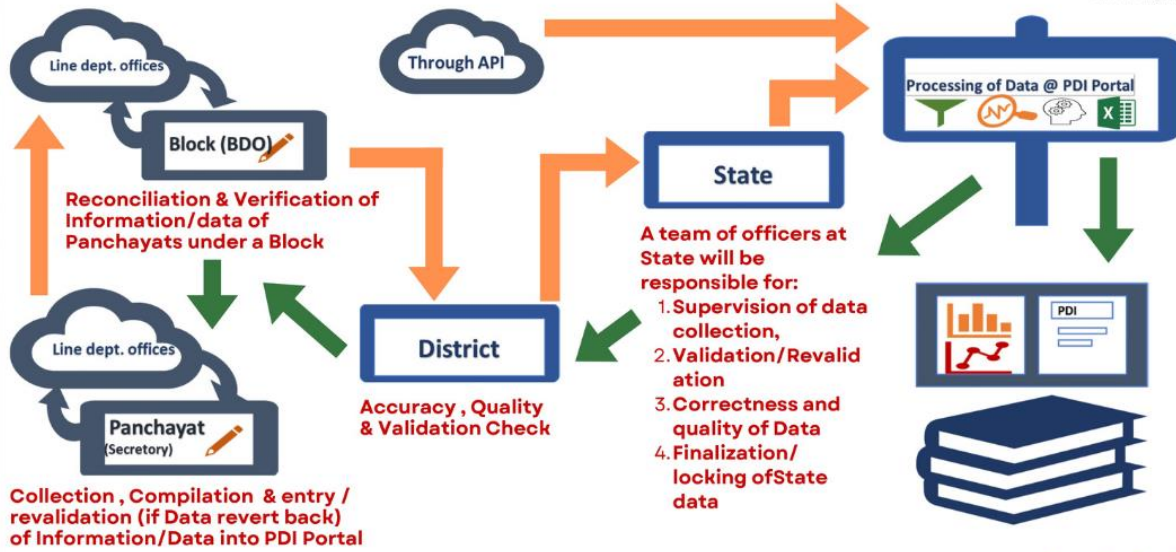
PROCESS OF DATA COLLECTION



PROCESS OF DATA COLLECTION



PROCESS OF DATA VALIDATION



FREQUENCY OF DATA COLLECTION

Data collection for the Local Level Index for Panchayat Development (LIF-PDI) be regular and up-to-date.

The frequency of data collection will vary depending on the indicator being measured. E.g. - data on ANC registration, FHTC, and toilets constructed should be collected on a monthly basis.

Data on road works and transition rates can be collected on a quarterly or annual basis

eGramSwaraj Portal - The Central Junction

eGramSwaraj portal be used as the single source of truth for data related to the LIF and PDI

This would make it easier to **collect, manage, and analyze data**, and it would also make it **more accessible to stakeholders**.

eGramSwaraj is already the **landing point for data from Ministries**, and it has the **GP level data that gives GP profile**

It is the **hub that leads to various other applications developed and being developed by MoPR**.



सत्यमेव जयते

DATA ANALYSIS

Utilizing collected data is essential.

Scores can form GP Report Cards, comparing levels and themes.

Indicator groups show outcomes like health and child development. Correlate these with spending and priorities.

Data aids planning, advocacy, and with AI & ML, future insights for policy-making



सत्यमेव जयते

SI. No.	Themes	Total LIF	NPA Mapping
1	Poverty Free and enhanced Livelihoods in village	37	17
2	Healthy Village	23	7
3	Child friendly village	85	15
4	Water Sufficient Village	30	10
5	Clean and Green Village	41	7
6	Self Sufficient Infrastructure in Village	161	12
7	Socially Just and Socially Secured Panchayat	70	9
8	Village with Good Governance	79	5
9	Women Friendly Village	51	8
	Grand Total	577	90



सत्यमेव जयते

SOME DASHBOARDS



सर्वकार पंचायत सङ्घ विभाग

GOVERNMENT OF INDIA | MINISTRY OF PANCHAYATI RAJ

Home



eGramSwaraj

Simplified Work Based Accounting Application for Panchayati Raj

DASHBOARD

- Home
- Transaction Statistics
- Scheme Statistics
- Online Transaction Statistics
- Online Pending Statistics
- Scheme Component Expenditure Report
- Online Payment Status Report
- Sector Wise Dash Board
- Planning & Reporting Dashboard
- Panchayat Decision Support System (PDSS)



Contents on this website are owned, updated and managed by the Panchayats and State Panchayati Raj Department as a part of e-Panchayat MMP of Ministry of Panchayati Raj (MoPR). Site is technically designed, hosted and maintained by National Informatics Centre (NIC)

- Terms & Conditions
- Privacy Policy
- Web Policy
- Contact Us
- Web Information Manager

Last updated on March 31, 2020

Activate Windows

GOVERNMENT OF INDIA | MINISTRY OF PANCHAYATI RAJ

Home



eGramSwaraj

Simplified Work Based Accounting Application for Panchayati Raj



Panchayat Information Dashboard

Financial Year: 2023-2024 | State: All

Navigation: Panchayat Profile, Panchayat Infrastructure, Panchayat Officials, Planning & Reporting, Accounting, Training, Miscellaneous

Category	ZP	BP	GP
Panchayat Profile	663	6389	263257
PESA Details	69	616	22728
Gramodaya Sankalp Magazine Status	3	29	612
Panchayat Success Stories	0	4	22
Special Innovation Details	0	4	48
Constitution of Committees	0	0	267
Devolution Matrix	1		

- Panchayat Profile
- Panchayat Infrastructure
- Panchayat Officials
- Planning & Reporting
- Accounting
- Training

Activate Windows

Go to Settings to activate Windows

Latest Updates

MA Training Video Modules are available in Res

Language: Hindi (हिंदी) | Login



Mission Antyodaya 2022-23



- Home
- About Us
- Analytics
- Reports
- Survey Results
- Resources
- Questionnaire
- Know Your Nodal Officer
- Android Application
- FAQs
- Contact Us

Daily Upload Progress

Last updated on: 15/08/2023 10:27 AM

- SHOW 10 ROWS
- COPY
- CSV
- EXCEL
- PRINT

Search:

State Name	Total District	Total Block	Total GP	Total Village	GP Uninhabited	Field Survey Status (No. Of GPs)										Block Verification Status (No. Of GPs)							
						Data Survey					Gram Panchayat Validated Copy		Geo Referencing			No Of GPs Where Gram Sabha Video Uploaded	No Of GPs Where Field Survey Completed	Gram Panchayat Validated Copy		Data Verification		Geo Referencing	No Of GPs Where Survey Finalized
						Downloaded	Downloaded But Not Started	Some Villages Data Uploaded	All Villages Data Uploaded	All Villages Signed PDF Uploaded	No Of GPs Having Assets	Some Assets Geo-Tagged	All Assets Geo-Tagged	All Villages Signed PDF Accepted	Some Villages Signed PDF Rejected			All Villages Survey Data Verified	All Geo Tagged Images Accepted	Some Geo Tagged Images Rejected			
Total	765	7254	268214	657574	188	266519	637	222	265660	265092	265008	498	263670	208333	264092	264768	33	264415	263370	63	263823		
Andaman And Nicobar Islands	3	9	70	361	0	70	0	0	70	70	70	0	70	70	70	70	0	70	70	0	70		
Andhra Pradesh	26	669	13325	20206	1	13317	4	7	13306	13306	13312	5	13307	13306	13301	13302	2	13299	13307	0	13297		
Arunachal Pradesh	25	128	2141	5761	0	2135	3	6	2126	2088	2060	104	1736	1611	1788	1969	3	1915	1665	0	1722		
Assam	35	242	2698	27917	0	2695	3	52	2630	2597	2678	65	2602	2006	2538	2592	1	2570	2572	4	2533		
Bihar	38	534	8182	44976	0	8182	0	1	8181	8181	8181	0	8181	8069	8180	8180	1	8179	8181	0	8179		
Chandigarh	1	0	0	0	0	0	0	0	0	0	0	0	0	0	0	0	0	0	0	0	0		

Helping make India Malnutrition free

With a focus to lay emphasis on nutritional status of Pregnant Women, Lactating Mothers, Children from 0-6 years age and Adolescent Girls

10 Crore* Happy Beneficiaries

*as on 30/07/2023



Activate Windows Go to Settings to activate Windows.



ग्रामीण विकास मंत्रालय
भारत सरकार
Ministry of Rural Development
GOVERNMENT OF INDIA

DASHBOARD



Mahatma Gandhi National Rural Employment Guarantee Act

Financial Year : 2023-2024 State Name : ALL STATE

Physical Progress Financial Progress Programme Specific Achievements Time Series

MGNREGA : Physical Progress as on 15/08/2023

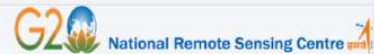
Scheme Website URL : <https://mgnrega.nic.in/> Financial Year : 2023-2024 State Name : ALL STATE

Sl. No.	Key Parameter Indicators	Status as on Date	Daily Delta Change	Monthly Delta Change
1	Approved Labour Budget (Persondays)	2,13,63,97,000	0	2,43,37,000
2	Persondays Generated so far	1,51,56,01,000	0	11,34,42,000
3	% of Total Labour Budget	71.04%	0.00%	4.57%
4	SC persondays % as of total persondays	19.27%	0.00%	0.16%
5	ST persondays % as of total persondays	17.00%	0.00%	0.00%
6	Women Persondays out of Total %	58.94%	0.00%	0.14%
7	Average Days of Employment Provided per Household	33.86	0.00	1.50
8	Average Wage Rate per Day per Person (Rs.)	235.20	0.00	0.95

Categorywise Persondays %



Activate Windows Go to Settings to activate Windows.



Home NRSC Application Sectors Bhuvan Collaborators Search Bhuvan Store Contact Us Newsletter WIKI



Bhuvan - Aadhaar Seva Kendra

Geo-Visualisation of Aadhaar Seva Kendra

Features: Search by Name | Search by Lat, Long | Search by City Name | Search by Pincode
Search within Range | Category wise Aadhaar Seva Kendra | State wise Aadhaar Seva Kendra



Latest Updates 06-08-2023

ISRO Geosphere-Biosphere Programme (IGBP) Above Ground Biomass(AGB) Data

Pocket Bhuvan enhanced with voice g

Visualisation & Free Download

Collaborative applications - Platform to share your data and create governance applications



Downloads

Application Sectors

Collaborative applications - Platform to share your data and create governance applications

Activate Windows Go to Settings to activate Windows.





COMMITTEES ASSOCIATED

- A. State Level Steering Committee
- B. District Level Monitoring Committee
- C. Sub-Divisional Level Monitoring Committee
- D. Block Level Data Validation Mechanism



STATE DATA VALIDATION TEAM

Will validate the accuracy and quality of data, configure field offices for data collection and line departments offices for validation, and supervise the data collection from different sources at Panchayat level.

Can revert the data to the District Validation Team in case of any disagreement

DISTRICT DATA VALIDATION TEAM

Will carry out data validation of the data received from the Block level validate the GP wise data received from BDOs.

District Team can revert the data to Block Team in case of any disagreement for reconfirmation by GP.

Once the data set of a GP is validated, District Team will submit to State Team for final validation.

SUB-DIVISIONAL LEVEL STEERING COMMITTEE

Constituted by

Chairperson - Sub-Divisional Magistrate/ Officers

Concerned BDO will be convener/Member Secretary of the Committee for their own Block

Members - District Statistical Officer and Nodal Officers of the Line Departments

Constituted for

The SDM/SDO will review and monitor the entire process of data collection and validation process at the Block level.

The Block Heads will personally monitor the data collection exercise and ensure that correct data is provided by their field units.



BLOCK LEVEL DATA VALIDATION MECHANISM

- 1 BDO and Heads of Line Department at Block level to validate the GP wise data mapped to their Department.
- 2 The Block Heads will personally monitor the data collection exercise and ensure that correct data is provided by their field units.
- 3 In case of disagreement data points, such data points can be reverted to GP for reconfirmation.
- 4 Only those data points which have been reverted to GP can be edited or revalidated by the GP after placing them before the Members of Panchayat and getting approved.



BLOCK LEVEL DATA VALIDATION MECHANISM

- 5 Once the data set of a GP is validated by BDO/Head of Line Department at Block level, they will submit it on portal for final validation/ aggregation and submission by the BDO.
- 6 BDO will validate aggregate/validate GP wise data in consultation with Block Statistics Officer / Technical Officer and submit to District on portal for validation at the District level.
- 7 BDO will engage the Facilitator designated for collection of data from different field offices/institutions and entry of the data. Facilitator can be a Panchayat/Government Official, contractual staff, professional data collection agent deployed by an agency outsourced by the State



BLOCK LEVEL DATA VALIDATION MECHANISM

- 8 BDO will coordinate with all concerned Departments at the Block level and convene the SDM level meetings with the block heads of the line departments to nudge them in facilitating the frontline workers of the line departments for providing the administrative data to the Vikas Sahayak /Facilitator.
- 9 BDO will review and monitor the progress of the GPs in data collection.
- 10 Will place the data collected before the Gram Sabha for approval. Panchayat Secretary/PDO will submit the data on the portal.



ROLE ASSIGNMENT OF STAKEHOLDERS AT DIFFERENT LEVELS

Data Source Validation Team

1

Identification of data points available with/ at Gram Panchayat

2

Identification Registers / Formats where data points would be available.

3

Identification of Data points to be collected through survey.



Vikas Sahayak / Facilitator

1

Visit to the institutions (AWC/PHC/Schools etc) for data collection.

2

Get the duly authenticated data in hard copy.

3

All Line Departments to facilitate data collection.

4

Enter the data into Portal with due care & upload the pdf of hard copy.

5

Submit the completed form to GP Secretary/PDO



Gram Panchayat Secretary

1

Download the copy of uploaded form from portal

2

Place before the Gram Sabha for approval

3

Upon approval of GS, submit on portal for Block Level Validation/ Scrutiny.



Block level officers / Team

1

BDO and Heads of Line Department at Block level to validate the GP wise data.

2

In case of disagreement data points can be reverted to GP for reconfirmation

3

Once entire data set of a GP is validated, submit to BDO for final validation.

4

BDO to validate GP wise and submit to District Team



District Team

1

District Team to validate the GP wise data received from BDOs.

2

If disagreement, data points can be reverted to Block for reconfirmation by GP.

3

Once entire data set of a GP is validated, submit to State Team for final validation.



State Team

1

State Team to validate the data received from District Team

2

If disagreement, data points can be reverted to District for reconfirmation by GP.

3

Upon validation of entire data set of a GP, submit for scoring.



Appendix 1: Session 1

Panchayat Development Index (PDI)

PDI is a multidimensional statistical tool to assess the progress of GPs based on their performance and rank them

- ❖ Poverty Free and Enhanced Livelihoods in Village
 - ❖ Healthy Village
 - ❖ Child-Friendly Village
 - ❖ Water Sufficient Village
 - ❖ Clean and Green Village
 - ❖ Village with Self-Sufficient Infrastructure
 - ❖ Socially Just and Socially Secured Village
 - ❖ Village with Good Governance
 - ❖ Women Friendly Village
- To capture the development and movement in development at the grass root level.
 - To ensure rapid transformation of Panchayats by focused intervention in key areas.
 - Aims to generate positive competition among Panchayats.
 - Strengthening PRIs by participatory approach in Planning process
 - Strengthening capacity of BDC chairpersons/Sarpanchs; sensitizing them about other key areas of development viz. Health, Education, Agriculture, Skill etc instead of Rural Development sector only
 - To adopt multi-sectoral approach through convergence, integration, and focused attention

LIF	PDI
<ul style="list-style-type: none"> • Unidimensional • Provides 9 thematic performance • Provides theme specific progress of GPs towards achieving SDGs 	<ul style="list-style-type: none"> • Multi-Dimensional • Provides overall performance • Ranks GPs based on their progress in achieving targets

PDI- Grouped Indicators

	Poverty Free and Enhanced Livelihoods in Village	Healthy Village	Child friendly Village	Water sufficient Village	Clean and green Village	Village with Self-sufficient infrastructure	Socially Just and Socially Secured Village	Village with Good Governance	Women friendly village
577	37	23	85	30	41	161	70	79	51
Sub Groups	6	4	4	6	7	9	12	5	8
	Income generation Housing Health Social Protection Drinking Water Food Security	Maternal Health Child Health Communicable diseases Non-Communicable diseases	Child survival, Child Development Child Protection Child Participation	Drinking water Water Management Sanitation Waste Management Water Sources Agriculture	Toilets Waste Management Clean energy Sustainable agriculture Sustainable fishing Environment/ Eco system Sustainable Agriculture	Institutional Infrastructure health Infrastructure Animal Husbandry Infrastructure education Community services Basic facilities Infrastructure sports Disaster management Infrastructure Child development	Poor Ultra poor Basic facilities Health Income Income ultra poor Social security, Social protection Education, Crime, SC/ST Participation	Teamwork Technology Timeline Transparency Transformation	Gender sex ratio Health Education Income generation Leadership & Empowerment Participation Crimes Social Protection

Data Accessible from Various Schemes and Initiatives

S. No	Theme	Total Indicators	Information available at GP/Village Level	Mission at Antyodaya	eGram Swaraj	Poshan Tracker (WCD)	JJM	SBM	Pradhan Mantri Krishi Sinchayee Yojana	UDISE
1	Poverty Free and Enhanced Livelihoods Village	37	24	23	1	0	0	0	0	0
2	Healthy Village	23	10	9	1	0	0	0	0	0
3	Child Friendly Village	85	37	36	1	0	0	0	0	0
4	Water Sufficient Village	30	18	5	1	0	7	4	1	0
5	Clean and Green Village	41	14	9	1	0	0	4	0	0
6	Village with Self Sufficient Infrastructure	161	32	16	7	0	0	0	0	0
7	Socially Just and Socially Secured Village	70	22	21	1	0	0	0	0	0
8	Village with Good Governance	79	48	6	42	0	0	0	0	0
9	Women Friendly Village	51	20	11	0	2	0	0	0	7
	Total	577	225	136	55	2	7	8	1	16

PDI Life-cycle Development

June 2022	LIF Local indicator framework has been developed based on indicators from NIF modified as per the relevance to rural India
	DATA MAPPING Available data points have been mapped according to different source ministries.
	INDEX DESIGN Review of methodology adopted for different indexes
	FINALIZATION Based on the review, methodology of PDI was finalized
	DEVELOPMENT OF PDI Calculation and analysis
July 2023	VALIDATION OF THE PDI INDEX Through PoC and field data collection done in Maharashtra
	RELEASE OF PDI COMMITTEE REPORT AND NATIONAL WORKSHOP
	STATE Consultations/workshops
	DATA SHARING Through API by 6 Ministries

Appendix 2: Session 3

Step 1

Indicators selection from LIF based on the following criteria:

- Availability of recent data
- Data should be available for at least 50% of the states
- Data points should not be regional-specific (like cyclone –center)
- Data points considered in National level SDG indicators
- Relevance to the localized concept
- Data points must not be endogenous

Step 2

Dimensionality reduction technique- Correlation coefficient will be estimated. Highly correlated indicators with correlation coefficient 0.95 or above will be removed since some indicators can be trivially related together.

Step 3

Selected indicators' value will be normalized using maximum and minimum observed value of the indicators

Step 4

9 Thematic scores for each GP will be estimated as the simple arithmetic mean of the indicator's values belong to that theme

Step 5

The composite indicator PDI will be estimated as the geometric mean of the 9 thematic scores for each GP



Kerala Institute of Local Administration

Mulamkunnathukavu P.O, Thrissur, Kerala, India - Pin: 680581

Phone : 0487 - 2207000, 2201312, 2200244

Fax : 0487 - 2201062

E-mail : info@kila.ac.in - Website : www.kila.ac.in

SEPTEMBER 2023