



Rural Development and  
Panchayat Raj Department

# Digital Platform for Participatory Planning in Gram Panchayats:

## Karnataka's Initiative 'Panchatantra 2.0'



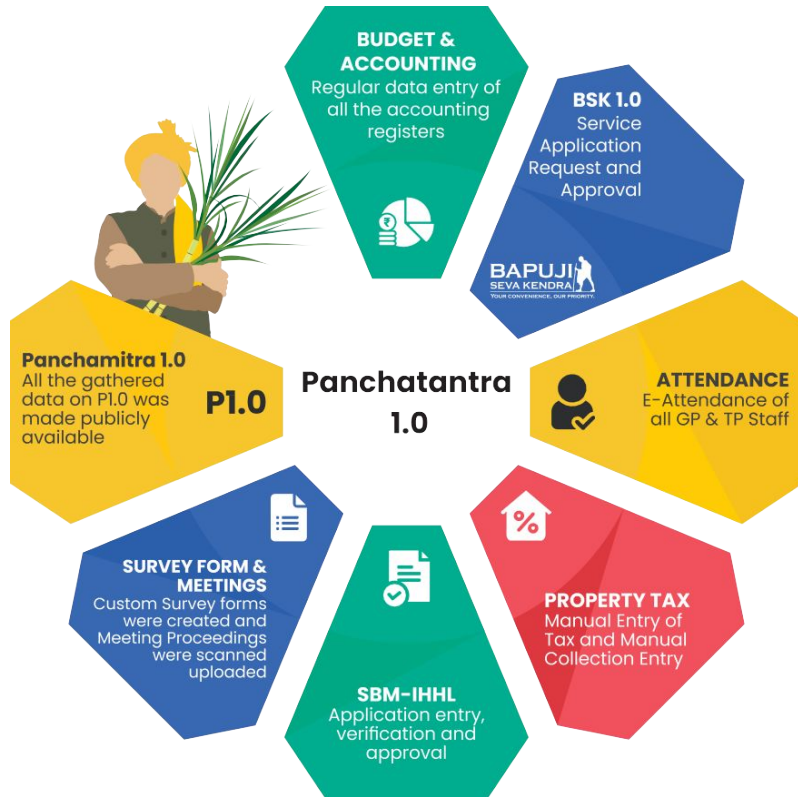


# Panchatantra

Rural Development and Panchayat Raj Department

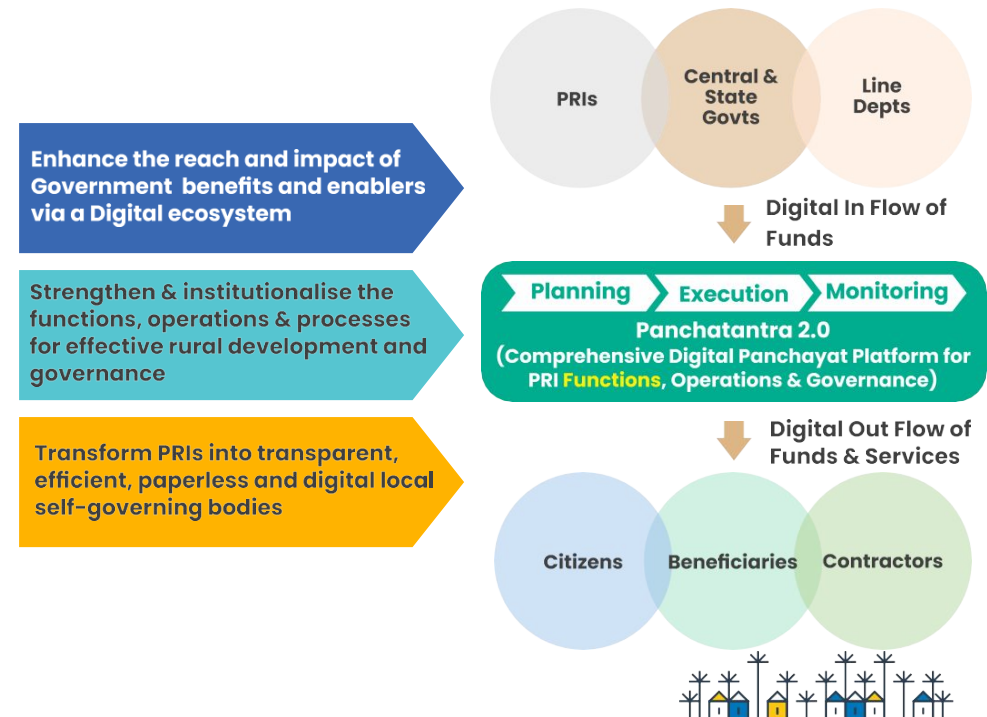
**Background:** Karnataka and the RDPR Department has been the flag bearer in adopting e-Governance practices and developed the award-winning Panchatantra 1.0 solution a decade ago and laid the path of Digital Transformation of PRIs in the Country.

## Key Features of Panchatantra 1.0



## Need for Panchatantra 2.0

Panchatantra 1.0 triggered the digital transformation in the grassroots administration, and with time, there was a need to move from partial digitization to complete digitization. Panchatantra 2.0 with its holistic and single stop solution offers complete digitization with enhanced capabilities to enable and achieve the Vision & Mission of RDPR.





# Panchatantra 2.0 Objectives

Panchatantra 2.0 is a comprehensive and holistic platform for enabling / enhancing Functions, Operations and Governance through Technology with the following key Objectives



## ENHANCE IMPACT & REACH

Enhance the reach and impact of Schemes, Benefits, Interventions and Support through Digital mechanisms



## STRENGTHEN GRAM PANCHAYATS

Provide guidelines, mechanisms, technology & trainings to enable Gram Panchayats to enhance their efficiency of operations & governance



## STREAMLINE OPERATIONS

Standardize and streamline processes for higher performance, participatory planning & sustainable development



## MEASURE & IMPROVE PERFORMANCE

Track, measure and report performance of Gram Panchayats across key indicators so as to year on year improve performance



## ENHANCE REVENUES

Evolve Revenue collections to enable a robust & transparent system to manage revenue collections





# Panchatantra 2.0 Multi-Stakeholder Based Functionalities



## CITIZENS

1. Apply online for 17 RDPR Services
2. Digital Payments, Digital Receipts, Certificates and Acknowledgment
3. Raise Grievances
4. Monitor and Track Application Status
5. SMS and Email Notifications shared w.r.t applications status and progress



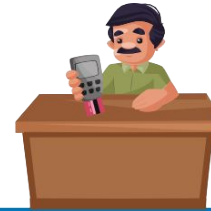
## ELECTED REPRESENTATIVES

1. Registration and Profile Management
2. Receive SMS Alerts of varied meetings
3. Encourage participation through mandatory quorum
4. Digitally signed proceedings by the meeting chairperson to increase discipline and decision making
5. Biometric attendance to increase accountability



## PANCHAYAT DEVELOPMENT OFFICER

1. eAttendance of all GP Staff
2. Review, Process and Approve the citizen service applications from BSK Mobile App
3. Generate Property Tax Demand
4. Day Book, Month Book Closure
5. Schedule Meetings, Generate Digital Meeting Notice, Prepare Digital Proceedings



## EOs, TP and CEOs, ZP

1. Review and provide approvals to requests received from GPs where applicable
2. Ensure compliance through monitoring
3. Review progress and performance of the GPs



## SECRETARIAT

1. Ensure compliance through monitoring
2. Review progress and performance of all the GPs of the State
3. Real time, data based policy decision making
4. Promote effective, good governance practices





# Perspective Planning

## Key Highlights (New Module)



As per the Karnataka Gram Swaraj and Panchayath Raj Act, 1993 Section 309-B, every Gram Panchayath has to prepare compulsorily perspective plan for 5 years with in 3 months of its constitution.

The Perspective Plan would help achieve the overall development and provide socio-economic justice to the economically weaker section of the society through a bottom's up planning process that gives due importance to respective priorities.

### Key Functions

- Formation of Village Level Planning Team and GP Planning Team
- Secondary Data Collection for around 600 Development Indicators
- Geo Fenced Focus Group Discussion (FGD) and Participatory Rural Appraisal (PRA)
- Goal Setting by Village Planning Team across each Sectors
- Preparation of Draft Perspective Plan by GP Planning Team basis information prepared by each village team.
- Review and Approval by Planning Standing Committee of GP
- Review and Approval by GP General Body
- Review and Suggestion gathering through Ward & Habitation Sabha's
- Review and Approval by one Orientation Grama Sabha of the GP
- Draft Perspective Plan made available to public. Provision for Citizen's to provide feedback
- Collated Citizen Feedback to be reviewed by GP Planning Team
- Final Grama Sabha to be conducted for approval of the Plan

### Integrations / APIs

- Kutumba (Planned)
- KRSRAC
- IPAAP – P2.0 Annual Action Plan

### Coverage Across Sectors

- Health
- Education
- Poverty, Livelihood & Skill Development
- Environment & Natural Resources
- Women and Child Development
- Socially Secure Village
- Infrastructure
- Good Governance

### Stakeholders

- GP Citizens, Civil Society
- GP Staff, GP Government Staff, Elected Representatives, Line Departments

### Next Steps

- Linkages with Line departments/ Kutumba to fetch the source data for over 600 KPIs.







# Perspective Planning Outcome & Reach



## PROGRESS REPORT OF PRESPECTIVE PLANNING

DISTRICT NAME	TOTAL NO OF GP	NO OF GP COMPLETION OF PRA	% OF GP COMPLETION OF PRA	NO OF GP COMPLETED HABITATION FGD	% OF GP COMPLETED HABITATION FGD	NO OF GP COMPLETED FGD 1	% OF GP COMPLETED FGD 1	NO OF GP COMPLETED FGD 2	% OF GP COMPLETED FGD 2	NO OF GP COMPLETED WARD SABHA FOR PP APPROVAL	% OF GP COMPLETED WARD SABHA FOR PP APPROVAL	NO OF GP COMPLETED PLANNING STANDING COMMITTEE MEETING FOR PP APPROVAL	% OF GP COMPLETED PLANNING STANDING COMMITTEE MEETING FOR PP APPROVAL	NO OF GP COMPLETED GP GENERAL BODY COMMITTEE MEETING FOR PP APPROVAL	% OF GP COMPLETED GP GENERAL BODY COMMITTEE MEETING FOR PP APPROVAL	NO OF GP COMPLETED DRAFT PP PLAN	% OF GP COMPLETED DRAFT PP PLAN	NO OF GP COMPLETED OF GP GRAM SABHA FOR PP APPROVAL	% OF GP COMPLETED OF GP GRAM SABHA FOR PP APPROVAL
BAGALKOTE	195	195	100	104	53	195	100	195	100	36	18	4	2	4	2	0	0	0	0
BALLARI	100	99	99	40	40	90	90	90	90	38	38	0	0	0	0	0	0	0	0
BELAGAVI	500	470	94	225	45	347	69	347	69	28	6	1	0	1	0	0	0	0	0
BENGALURU URBAN	86	84	98	61	71	64	74	64	74	5	6	0	0	0	0	0	0	0	0
BENGALURU RURAL	101	101	100	101	100	101	100	101	100	29	29	10	10	10	10	1	1	1	1
BIDAR	185	180	97	153	83	121	65	121	65	17	9	0	0	0	0	0	0	0	0
CHAMARAJANAGARA	130	130	100	78	60	79	61	79	61	9	7	0	0	0	0	0	0	0	0
CHIKKABALLAPURA	157	157	100	146	93	153	97	153	97	96	61	10	6	10	6	0	0	2	1
CHIKKAMAGALURU	226	226	100	185	82	148	65	148	65	63	82	14	6	14	6	5	2	10	4
CHITRADURGA	189	189	100	173	92	165	87	165	87	7	4	0	0	0	0	0	0	0	0
DAKSHINA KANNADA	223	223	100	215	96	190	85	190	85	72	32	43	19	40	18	16	7	33	15
DAVANAGERE	194	189	97	182	94	173	89	173	89	35	18	0	0	0	0	0	0	0	0
DHARWAR	145	145	100	120	83	126	87	126	87	19	13	2	1	2	1	2	1	2	1
GADAG	122	122	100	113	93	122	100	122	100	48	39	4	3	4	3	0	0	0	0
HASSAN	264	264	100	231	88	264	100	264	100	189	72	143	54	131	50	42	16	49	19
HAVERI	223	212	95	145	65	150	67	150	67	61	27	2	1	2	1	0	0	0	0
KALABURAGI	261	261	100	125	48	261	100	261	100	29	11	0	0	0	0	0	0	0	0
KODAGU	103	96	93	90	87	82	80	82	80	2	2	1	1	1	1	0	0	1	1
KOLAR	154	152	99	87	56	149	97	149	97	50	32	5	3	5	3	2	1	2	1
KOPPAL	153	153	100	147	96	153	100	153	100	24	16	0	0	0	0	0	0	0	0
MANDYA	233	229	98	172	74	168	72	168	72	35	15	2	1	2	1	0	0	1	0
MYSURU	256	252	98	224	88	235	92	235	92	43	17	13	5	12	5	3	1	8	3
RAICHUR	179	179	100	114	64	96	54	96	54	0	0	0	0	0	0	0	0	0	0
RAMANAGARA	126	126	100	123	98	122	97	122	97	31	25	3	2	3	2	0	0	0	0
SHIVAMOGGA	262	261	100	215	82	239	91	239	91	150	57	53	20	47	18	13	5	24	9
TUMAKURU	330	330	100	274	83	263	80	263	80	59	18	10	3	10	3	4	1	8	2
UDUPI	155	155	100	155	100	155	100	155	100	40	26	11	7	10	6	3	2	9	6
UTTARA KANNADA	229	229	100	188	82	227	99	227	99	31	14	1	0	1	0	1	0	1	0
VIJAYANAGAR	137	137	100	79	58	137	100	137	100	106	77	7	5	7	5	1	1	1	1
VIJAYAPURA	211	211	100	84	40	191	91	191	91	14	7	0	0	0	0	0	0	0	0
YADGIR	122	120	98	69	57	106	87	106	87	4	3	1	1	1	1	0	0	0	0
<b>TOTAL</b>	<b>5951</b>	<b>5877</b>	<b>99</b>	<b>4418</b>	<b>74</b>	<b>5072</b>	<b>85</b>	<b>5072</b>	<b>85</b>	<b>1370</b>	<b>23</b>	<b>340</b>	<b>6</b>	<b>317</b>	<b>5</b>	<b>93</b>	<b>2</b>	<b>152</b>	<b>3</b>





# Integrated Participative Annual Action Plan (IPAAP) Key Highlights (New Module)



The IPAAP is an annual action plan that is linked to the perspective plan and needs to be created to execute the activities identified during the Perspective Planning to realize the vision.

This concept is the true realization of consolidated planning spanning multiple schemes that was envisioned in the GPDP.

## Key Functions

- The Integrated Planning Process would be comprehensive and participatory by involving full convergence of all the RDPR schemes into one Single Integrated Plan which would be linked and derived from the GPs 5-year Perspective Plan.
- Resource Envelope
- Convergence of Works across schemes
- Grama Sabha Scrutinization and Approval
- **Monitoring** – Physical and Financial
- Scheme Based Plan Generation
- Integrated Action Plan Generation including 'No Cost Activities', Line Department Activities
- Spillover Works
- Supplementary Plans
- Assets Mapping

## Integrations / APIs

- Kutumba (Planned)
- NGSK (InProgress)
- Perspective Plan – P2.0
- §E-GramaSwaraj (GoI) (Planned)
- KRSRAC

## Coverage Across Schemes

- 15th Finance Commission
- MGNREGS (Jalasanjeevini)
- SBM
- Statutory Grants
- Own Source revenue

## Stakeholders

- GP Citizens, Civil Society
- GP Staff, GP Government Staff, Elected Representatives, Implementing Agencies, Line Departments

## Next Steps

- Integration with e-GramaSwaraj
- Revised Version of IPAAP to be developed
- SoP on IPAAP modification and spillover





# Survey and Data Gathering

## Key Highlights (New Module)



A tool to gather requirements and demands from the citizens for the Annual Survey and other key initiatives and interventions with a workflow driven approach for data gathering, review, validation, and approval.

### Key Functions

- Survey Levels – Household, Village, Grama Panchayat & Open Level
- Survey creation, updates, redesigns & roll out as per defined calendars
- Survey data review and approval mechanisms
- Pre population of data from other Surveys and Applications (planned)
- Master Survey Questionnaire – A question bank of major developmental issues
- Configurable Survey Questions just like Google Forms.

### Integrations / APIs

- Mission Antyodaya
- IMIS
- K-GIS
- SNEHA, SATS

### Stakeholders / Beneficiaries

- GP Staff & GP Government Staff, KPRC
- Line Department Staff
- Households / Beneficiaries / Citizens
- Facilitators

### Next Steps

- Integration with envisioned Applications
- Rollout across multiple levels
- Adoption by key stakeholders







Rural Development and  
Panchayat Raj Department

# Gram Panchayat Perspective Plan – Karnataka Initiative





## 309 B – Vision plan

- Vision Plan for the whole term of GP to be prepared through PRA within 3 months from the date of Constitution of GP
- Set targets and develop outcome indicators for measuring performance
- It shall form the basis for needs-based annual plans for each year for the next five years of its term



# GP perspective plan

- GP Perspective Plan based on LSDGs
- GPDP to be subset of Perspective plan
- All other scheme plans to be based on the GP perspective plan
- State level workshop Chaired by ACS on Finalising the Perspective Plan preparation process
- State level Write shops held to identify the sectors to be covered
- Each sector to have detailed format identifying the problems in the village and setting the goals for the next 5 years
- Pilot to test the process and formats in selected GPs
- Preparation of Perspective Plan commenced in September 22 and to be completed by mid March 2023



## Mapping PP, CDDP and LSDG Themes

Sector No.	Perspective Plan Sector	CDDP Working Group	LSDG Themes
1	Poverty free, Livelihood and Skill Development	Poverty Reduction, Livelihood and Skill Development	<b>Theme 1:</b> Poverty Free Village (SDGs:1,2,3, 4, 5, 6, 7, 8, 10, 11, 13 and 15)
		Agriculture and allied sectors	
2	Health	Health	<b>Theme 2:</b> Healthy Village (SDGs:2 and 3)
3	Women and Child Development	Women and Child Development	<b>Theme 3:</b> Child-Friendly Village (SDGs:1,2,3,4 and 5) <b>Theme 9:</b> Women Friendly Village (SDGs:1,2,3,4,5 and 8)
	Education	Education	-





## Mapping PP, CDDP and LSDG Themes

Sector No	Perspective Plan Sector	CDDP Working Group	LSDG Themes
4	Social Security	Social Security and Social Justice	<b>Theme 7:</b> Socially Secured Village (SDGs:1,2,5,10 and 16)
5	Self Sufficient Infrastructure GP	Infrastructure Development	<b>Theme 6:</b> Village with Self-Sufficient Infrastructure (SDGs:1,2,3,4,5,6,9 and 11)
6	Environment and Natural Resources	Water Resources	<b>Theme 4:</b> Water Sufficient Village (SDGs: 6 and 15)
7		Environment and Climate Change	<b>Theme 5:</b> Clean and Green Village (SDGs:6, 7, 12, 13, 14 and 15)
8	Good Governance GP		<b>Theme 8:</b> GP with Good Governance (SDGs:16)



# Sectors for GP PP

- Identification of gaps in development in the following sectors for preparing the perspective plan at GP level
  - Poverty free, Livelihood and Skill Development
  - Health
  - Education
  - Women and Child Development
  - Environment and Natural Resources
  - Social Justice and Socially Secured Panchayat
  - Self Sufficient Infrastructure Panchayat
  - Good Governance



# Steps for preparation of Vision Plan

- Step - 1 : Constitution of Village and GP Planning Teams
- Step - 2 : Data Collection
- Step - 3 : Focussed Group Discussions and PRA
- Step - 4: Organising Habitation and Ward Sabhas
- Step - 5 : Situation Analysis and Preparation of Draft Vision Plan by the GP Planning Team
- Step - 6: Presentation to GP Standing Committee on Finance, Audit and Planning
- Step - 7: Discussion and consolidation by the GP General Body





# Contd...

- Step - 8 : Discussion on Draft Plan and approval by  
Gram Sabha
- Step – 9 : Consolidation of GS suggestions by the GP  
General Body
- Step - 10 : Uploading in P 2.0 portal





- 176 Taluk Panchayat Resource Centres with SATCOM connectivity
- Totally 279 Block Centres, connected through Youtube Live
- Non-residential training - 3 days
- Reaching out to the community through IEC - Introduction in other Languages – Hindi, Urdu, Tulu, Marathi, Soliga dialect, Koraga dialect and Sign Language
- Pre-recorded sessions by Experts
- Brief animated videos as introduction for each of the sessions
- Group activity for draft sectoral plan preparation Group activity included preparation of Social map and Resource map of the GP





Rural Development and  
Panchayat Raj Department

Thank you

