



# Initiatives on Development of Panchayat Development Index

by

## Jammu & Kashmir

**Department of Rural Development and Panchayati Raj**

**Government of Jammu & Kashmir**

# Good Governance Index

- The UT of J&K took the first step by creating a District Good Governance Index (DGGI) to evaluate the progress of the districts and to rank them based on development indicators.
- Rankings (District-wise and Division-wise) are derived based on composite scores of selected Sectors and Indicators
- The first and second edition of DGGI was released by the Hon'ble Home Minister, GoI, on 22<sup>nd</sup> January 2022 and 4<sup>th</sup> October 2022 respectively.
- Now the District Good Governance Index 3.0 has also been released.





# District Good Governance Index

# District Good Governance Index 3.0 -Rankings

S.no	District	Composite Rank	Score
1	Jammu	1	6.3771
2	Samba	2	6.1799
3	Srinagar	3	6.0045
4	Rajouri	4	5.8696
5	Bandipora	5	5.7651
6	Anantnag	6	5.7110
7	Badgam	7	5.4924
8	Pulwama	8	5.2814
9	Doda	9	5.2622
10	Ganderbal	10	5.2588
11	Baramula	11	5.0285
12	Shopian	12	4.9446
13	Udhampur	13	4.9322
14	Kupwara	14	4.8881
15	Kathua	15	4.8179
16	Kishtwar	16	4.7800
17	Kulgam	17	4.6391
18	Ramban	18	4.6354
19	Poonch	19	4.4623
20	Reasi	20	4.4608

# District-wise Highlights



District Rajouri has completed pending houses under PMAY scheme within given timelines through targeted approach, by putting in extra efforts and regular review of the scheme.



Districts Doda and Bandipora have focussed on improving the Tourism sector by organising various events including Melas/camps , Winter Sports, Rafting, Paragliding, as a result of which tourist footfall has substantially increased.



Similarly, the Districts of Anantnag, Jammu , Samba, Ganderbal , Ramban and Rajouri have shown improvement under Public health parameters like Institutional Deliveries, full immunization, Ayushman cards etc. by organising special camps, outreach programmes etc.

# District-wise Highlights



District Srinagar and Kathua have shown improvement in disbursement of financial assistance under Self-employment schemes due to synchronized interventions like creating awareness among the youth for promoting Self Employment through public outreach programmes.



The interventions like Collection of door to door garbage in urban areas, Segregation of Solid & Liquid Waste Management, providing of Dustbins have improved the sanitation facilities in Urban/Rural areas of districts Rajouri, Anantnag, Ganderbal, Kishtwar, Reasi and Samba due to which people have been provided access to improved sanitation facility.



Districts of Anantnag, Budgam, Jammu and Srinagar have achieved growth in the Industrial & Allied Sectors as the district administration streamlined the registration of MSME units and commercial establishments in these districts.



Districts of Bandipora, Rajouri, Pulwama, Ganderbal, Doda, Jammu, Ramban, Samba and Anantnag have initiated many governance initiatives like regular and time bound redressal of grievance, initiating online services for ease of the general public etc.



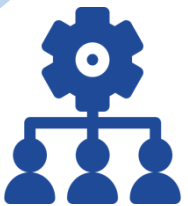
# Impact assessment/Outcomes of DGGI



Ranking of Districts through DGGI has changed perception of the public towards governance and also built confidence in Government policies.



Districts are improving their performance by way of peer learning and assimilating the ideas of other districts through close co-ordination and discussion.



District Administration is continuously making efforts to improve the performance in governance through various interventions which ultimately results in efficient and improved service delivery mechanism

# District Good Governance Portal

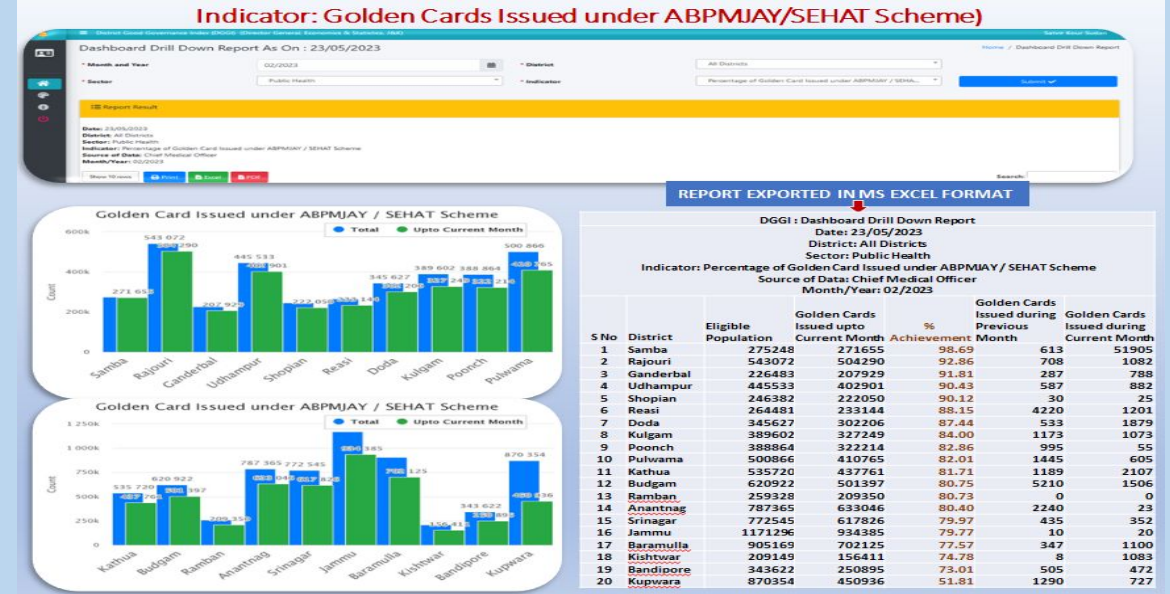
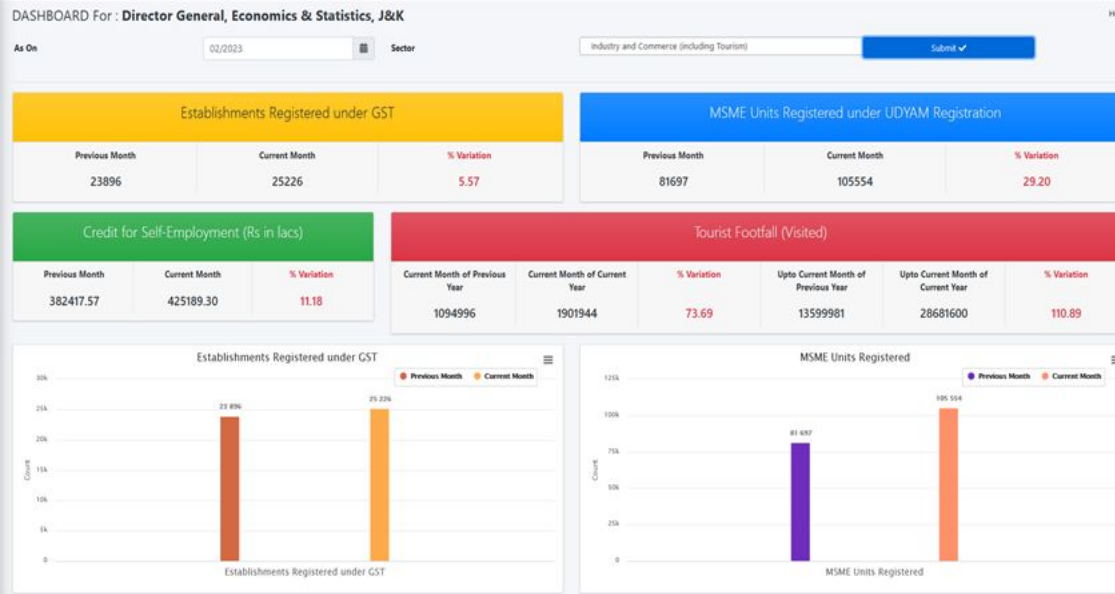
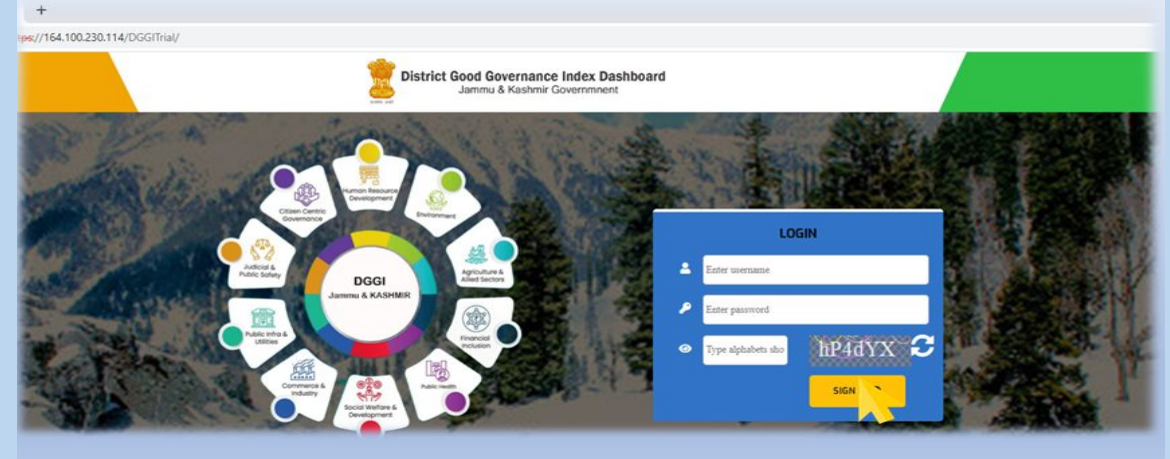
The main objective of the project is to capture monthly progress of all 20 districts in 10 sectors of the Governance to facilitate the Administrative Secretaries of various departments to have an assessment of performance of the schemes/ programmes under implementation in the districts

To facilitate the district administration and sectoral officers to have an assessment of the programmes being implemented on ground viz-a-viz other districts and to address the existing gap on various parameters so as to deliver the benefits of the schemes/programmes to the general public.

To derive overall ranking of the districts and the sectoral ranking on annual basis.



## Login Page to DGGI Portal





# Key Features of DGGI Monthly Dashboard

URL: <http://164.100.230.114/DGGITrial/>

The dashboard analyses the data on monthly basis and provides district-wise delta changes in tabular & graphical form for ease of the stakeholders.

Sector-wise/Indicator-wise data is uploaded on the portal after authentication by the Deputy Commissioners & then scrutinized/verified by the Directorates.

100% processes have been re-engineered including Automated Processing, Target Orientation, Minimized process complexity, cost and service delivery time.

Increased transparency levels, Reduced administrative burden, Adoption of best practices, Continuous Monitoring, Improved citizen focus and experience.



# Aspirational Block Development Programme (ABDP)

# Aspirational Block Development Programme (ABDP)

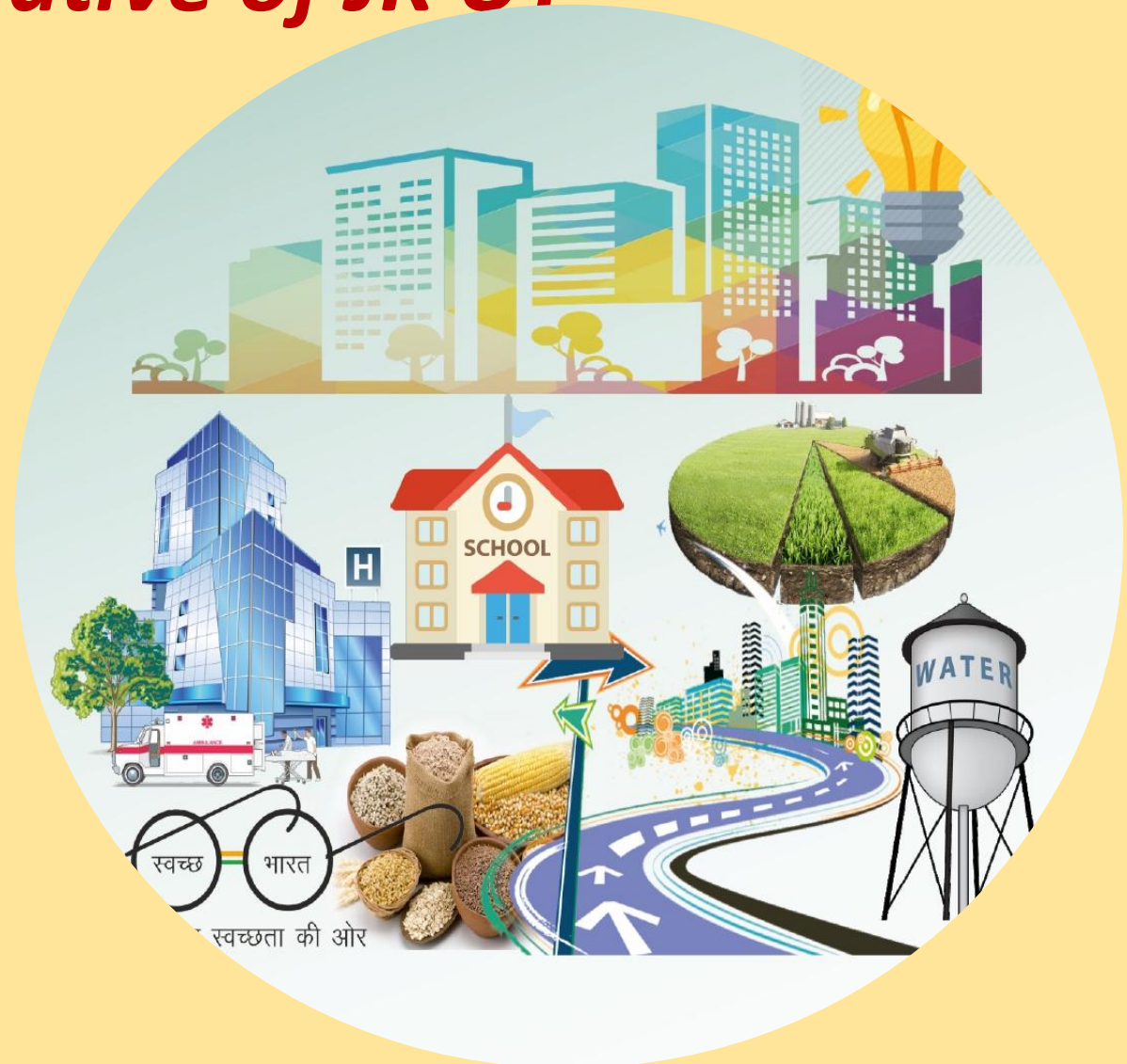
## *A unique initiative of JK UT*

A step towards equitable and inclusive development for ushering new era of development in the backward blocks of UT.

Conceived on the analogy of “Aspirational Districts Programme” of NITI Aayog, Gol.

Rupees One Crore Financial Assistance each to be provided on achievement of defined Ten Qualifying Criterion/ Indicators .

Programme approved by the Administrative Council of Jammu & Kashmir



# Feature of ABDP

- 44 Aspirational Blocks selected, from 285 Blocks of UT of J&K, based on their backwardness on the basis of 21 indicators covering four major aspects of
  - 1. Human development i.e., Poverty (3 indicators),
  - 2. Health & Nutrition (6 indicators),
  - 3. Education (7 indicators) &
  - 4. Basic Infrastructure (5 indicators) .
- ABDP Dashboard has also been created for monitoring the progress of these 44 Aspirational Blocks on 61 Data Points - 49 Key Performance Indicators.
- Data is being populated on ABDP Dashboard on a monthly basis from March onwards and the base is 31<sup>st</sup> December 2021/1st March, 2022.
- ABDP Plan of all the 44 Aspirational Blocks prepared and Benchmark Achievement Certificates submitted.
- Plan Approved and all approved Works/Activities under ABDP Plan uploaded on the BEAMS.
- Funds amounting to Rs 44.00 Crore (Rs 1.00 Crore per Aspirational Block) were released to concerned District Development Commissioners for their utilization in Aspirational Blocks (except Rs 132.61 lacs)

# DASHBOARD SCORE RANKING HIGH TO LOW

## MARCH 2023

S.No.	District	Block	Composite Score		S.No.	District	Block	Composite Score
1	Srinagar	HARWAN	80.10		23	Samba	SUMB	65.90
2	Srinagar	KHANMOH	79.20		24	Kupwara	MACHIL	65.70
3	Shopian	KELLER	74.20		25	Rajouri	KHAWAS	65.20
4	Kulgam	D K MARG	72.00		26	Badgam	SURSYAR	65.00
5	Anantnag	CHITTERGUL	71.90		27	Anantnag	LARNOO	63.80
6	Jammu	PARGWAL	71.70		28	Shopian	RAMNAGRI	63.30
7	Jammu	SAMWAN	71.70		29	Ramban	GANDHRI	62.90
8	Pulwama	ARIPAL	71.60		30	Ramban	KHARI MM	62.50
9	Kulgam	MANZGAM	71.20		31	Kathua	DUGGAN	61.80
10	Doda	KASTIGARH	70.40		32	Bandipura	ARIN	61.40
11	Rajouri	BUDHAL	69.90		33	Doda	CHILLI PINGAL	61.40
12	Samba	RAJPURA	68.80		34	Kishtwar	MARWAH	60.40
13	Baramula	SINGHPORA	68.80		35	Bandipura	TULAIL	59.90
14	Baramula	URI	68.70		36	Reasi	MAHORE	58.70
15	Ganderbal	GUND	68.60		37	Ramban	GUNDI DHARAM	57.70
16	Pulwama	ACHGOOZA	67.70		38	Kathua	DUGGAIN	56.30
17	Kupwara	KERAN	67.40		39	Kishtwar	WARWAN	56.30
18	Ganderbal	LAR	67.30		40	Reasi	JIJ BAGLI	56.10
19	Ramban	UKHRAL	66.90		41	Udhampur	DUDU BASANT GARH	54.20
20	Poonch	BALAKOTE	66.80		42	Poonch	MANKOTE	53.50
21	Reasi	THAKRAKOTE	66.50		43	Reasi	CHASANA	52.90
22	Badgam	PAKHERPORA	66.00		44	Udhampur	MOUNGRI	52.20

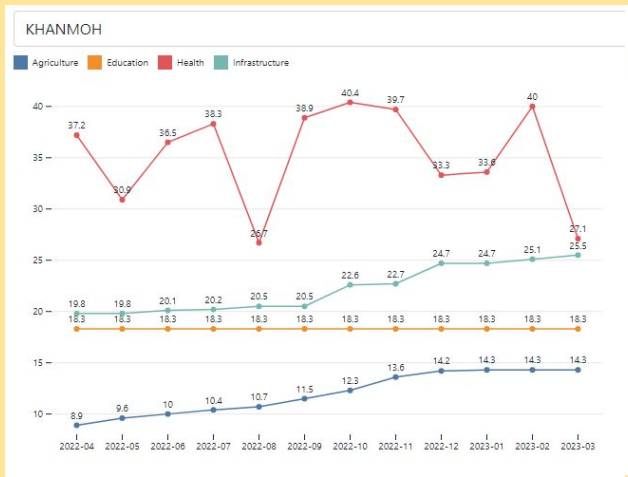


# Graphical Analysis of Best Three Performing Blocks for last five months upto march 2023

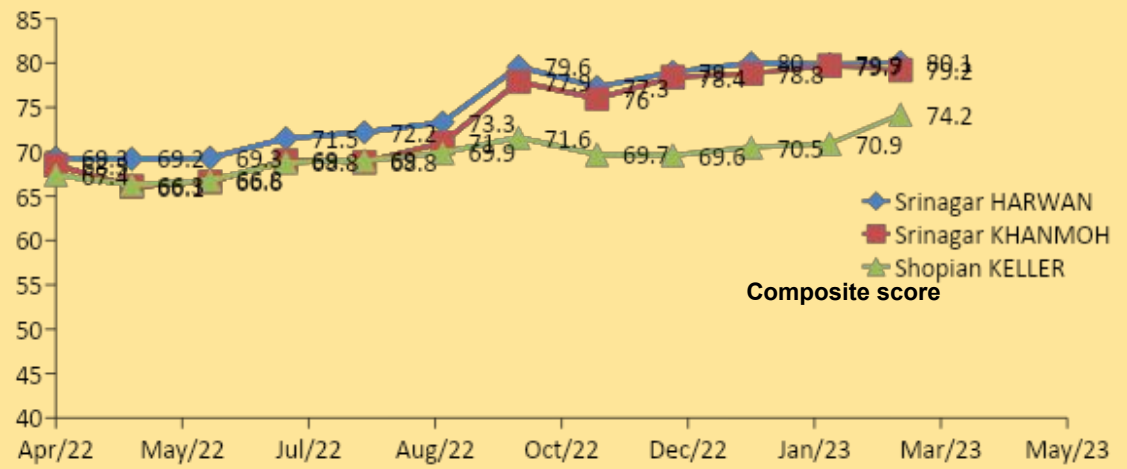
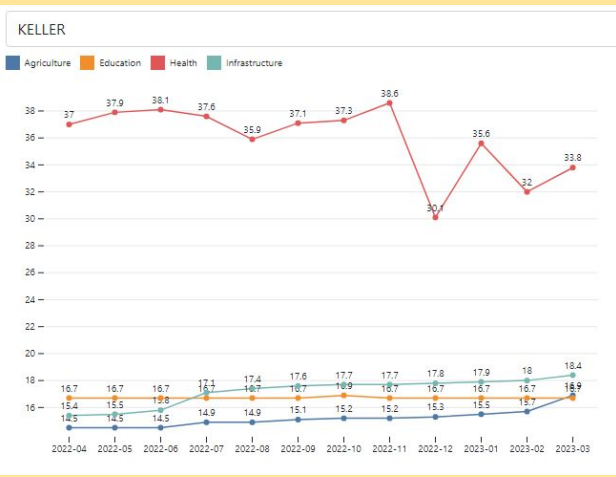
**SRINAGAR (HARWAN)**



**SRINAGAR (KHANMOH)**



**SHOPIAN (KELLER)**



# ASPIRATIONAL PANCHAYAT DEVELOPMENT PROGRAMME(APDP)

- The objective of the Programme, which is a step towards equitable and inclusive development in J&K, is to identify the most underdeveloped panchayats in UT and bring them at par with other developed panchayats through localized intervention.
- The program is aimed at improving the lives of the local population of these areas through
  - a. Saturation of present schemes;
  - b. Building infrastructure through convergence with other and schemes;
  - c. Providing additional financial support of Rs.28.50 Cr. to 285 Panchayats @ Rs.10.00 lakhs for each Aspirational Panchayat.
- APDP Dashboard developed through IT Department for monitoring & generation of the Panchayat Development Index is being launched shortly whereunder Panchayats shall be ranked on a monthly basis.



# Key Features of APDP

- 100 Parameters/Indicators have been fixed for selecting and monitoring the Aspirational Panchayat Development Programme across 09 sectors.
- The process included rating all the 4291 Panchayats spread over 285 Blocks and 20 Districts of Jammu and Kashmir on socio-economic indicators concerning the lives of the people residing in the rural areas.
- 285 Most Backward Panchayats (One Most Backward Panchayat per Block) have been selected from 4291 Panchayats of UT of J&K, on the basis of the least aggregate score obtained on the selected 100 parameters/ indicators in the Panchayat Development Index (PDI) in the concerned Block.
- Aspirational Panchayat Development Programme is being implemented under the overall supervision of the District Development Commissioners (DDCs).
- For smooth implementation of the program, a Nodal Officer has been also designated by District Authorities.
- Districts have already prepared the APDP Plan for the year 2023-24 under District Plan



# Sectors and Indicators

***100 measurable indicators (KPIs)  
identified across 9 Sectors***



- **Agriculture & allied Activities (6 KPIs),**
- **Health & Nutrition (11 KPIs),**
- **Education (13 KPIs),**
- **Rural Development & Sanitation (7 KPIs),**
- **Individual Beneficiary Oriented Schemes (4 KPIs),**
- **Skill Development (4 KPIs),**
- **Basic Infrastructure (17 KPIs),**
- **Environment (5 KPIs), &**
- **Good Governance (33 KPIs).**



S.No	Sectors	Indicators	
1	Agriculture and allied sectors	1	Percentage of Soil health card issued
		2	Percentage of Kisan Credit card issued
		3	Percentage of farmers provided assistance under PM Kisan Samman Nidhi Yojana
		4	Percentage of cultivable land under double crop farming
		5	Percentage Coverage of cattle vaccinated
		6	Percentage coverage of cattle artificially inseminated
2	Health and Nutrition	7	Percentage of Pregnant women registered for ANC checkup within 1st trimester
		8	Percentage of home births
		9	Sex ratio at birth
		10	Percentage of children aged 9 to 11 months fully Immunization
		11	Percentage of population covered by Golden Cards under PMJAY/ SEHAT scheme
		12	Percentage of Low Births weight babies
		13	Percentage of children upto age 6 years who are Wasted ( Weight for height)
		14	Percentage of children upto age 6 years who are Stunted (Height for age)
		15	Percentage of AWC conducting Village Health, Sanitation & Nutrition day (One per month)
		16	Percentage of children (0-6 years) regularly taking supplementary nutrition under ICDS
		17	Percentage of Pregnant / lactating women regularly taking supplementary nutrition
3	Education	18	Percentage of Children 6-14 years enrolled in schools
		19	Percentage of schools having functional toilet facility
		20	Percentage of schools having separate toilet facility for girls
		21	Percentage of schools having functional drinking water facility
		22	Percentage of schools having functional electricity connection
		23	Percentage of schools having abnormal (<1:10 ) teacher pupil ratio
		24	Percentage of schools having abnormal ( >1:30) teacher pupil ratio
		25	Percentage of eligible students receiving scholarship (ST/SC/OBC and Merit cum means)
		26	Percentage of children served mid day meal
		27	Percentage of students provided free Text books
		28	Percentage of students provided free Uniform
		29	Percentage of Out of school children in the age group of 6-14 years
		30	Literacy rate (%)
4	Rural Development and Sanitation	31	Percentage of houses Sanctioned under PMAY-G
		32	Percentage of houses completed viz a viz sanctioned under PMAY-G
		33	Percentage of delayed payments under MGNREGA
		34	Percentage of MGNREGA Cards seeded with Aadhaar
		35	Percentage of eligible Households provided IHHLs under SBM.
		36	Percentage of IHHLs functional
5	Individual Beneficiary Schemes	37	Percentage of household covered under soakage pits
		38	Percentage of eligible persons receiving old age pension / widow pension/ disability pension (all categories)
		39	Percentage of Households covered under NFSA through Aadhaar seeding POS
		40	Percentage of household using clean cooking fuel
6	Skill Development and Employment	41	Percentage of eligible women provided assistance under Pradhan Mantri Matru Vandana Yojna (PMMVY)
		42	Percentage of applicants who havebeen provided loan (funds disbursed) under PMEGP/ KVIB/ KVIC etc
		43	Percentage of applicants who have been provided loan (funds disbursed) under MUMKIN/ Tejaswani/ SIE etc
		44	Number of self Help Group formed and provided bank credit linkage
		45	Percentage of Youth trained against target under HIMAYAT

# Key Performance Indicators (KPI)



# Key Performance Indicators (KPI)



S.No	Sectors	Indicators
7	Basic Infrastructure	46 Percentage of households having functional household tap connection (FHTC)
		47 Percentage of households getting Quality drinking water
		48 Percentage of households electrified.
		49 Percentage of eligible habitations connected under PMGSY (As per Census 2001)
		50 Percentage of road length macadamized/ concrete / tiled
		51 Percentage of hamlets not having public transport facility
		52 Whether street lights are provided in public places for ensuring safety in the Panchayat
		53 Availability of Panchayat ghar.
		54 Availability of Common Service Center with in the Panchayat
		55 Availability of Internet facility with in the Panchayat
		56 Availability of bank branch /extension point/ business correspondent with in the Panchayat
		57 Availability of ATM with in the Panchayat
		58 Availability of Health Institution with in the Panchayat (Sub centers/PHCs etc.
		59 Availability of Pre Primary / Kindergarten School
60 Availability of Primary / Middle School		
61 Availability of play ground / play field with in the Panchayat		
62 Availability of Rural HAAT		
8	Environment	63 Has the climate Resilience Plan been developed for the Gram Panchayat
		64 Whether door to door collection of solid waste facility available
		65 Whether segregation sheds for solid and liquid waste available
		66 Whether the panchayat is single use plastic free
9	Governance	67 Whether the panchayat is carbon neutral
		68 Percentage of population covered under Aadhaar.
		69 Percentage of population provided e- shram cards
		70 Percentage of land pass books issued
		71 Percentage of grievances disposed
		72 Percentage of land mutations done
		73 Percentage of online services being utilized
		74 Percentage of Monday Gram Sabha meetings held
		75 Percentage of Gram sabhas panchayat being held through JK Panchayat Portal
		76 Percentage coverage of Domicile Certificates
		77 Percentage rejuvenation/completion of water bodies under Amrit Sarovar
		78 Whether monthly awareness camps organized under various schemes
		79 Whether Pani Smities constituted and meeting conducted regularly
		80 Whether Gram Panchayat aware about Rapid Assessment System (RAS) Portal
		81 Whether Gram Panchayat aware about JK Panchayat Portal
		82 Whether in the panchayat awareness about Jan Nigrani Portal available
		83 Availability of Aadhaar Enabled Payment (AEP) system in the Panchayat
		84 Whether the Disaster Management Plan framed/developed
85 Whether the list of beneficiaries related to the schemes/ programmes displayed on Gram Panchayat Wall		
86 Whether the activities approved under Halqa Panchayat Development Plan displayed on the Gram Panchayat Wall		
87 Whether camps have been organised for awareness on digital literacy		
88 Whether people are aware about Jan Bhagidhari Portal.		
89 Cultural events conducted		
90 Whether Youth Club facility is available		
91 Whether Kissan Awareness Camps are held		
92 Whether Cooperative Societies are available in the Panchayat		
93 Whether PDS store is available		
94 Whether Jan Ashudhi Centre is available or not		
95 Whether Rain Water Harvesting techniques adopted		
96 Percentage of encroached land vacated		
97 Whether CSC centres functional		
98 Whether demand for wage employment saturated		
99 Whether demand for self employment saturated		
100 Whether sports evenets held		

# District-wise Range of Scores Achieved- Panchayats having Least score & highest score in the District

SNO	DISTRICT	BLOCK	PANCHAYAT	Panchayat having Least Score in the District	Panchayat having Highest Score in the District	BLOCK	PANCHAYAT
<b>Kashmir Division</b>							
1	Bandipore	TULAIL	Buglinder B	49.78	75.96	BANDIPORA	Nadihal A
2	Anantnag	CHITTERGUL	Panchalthan	51.77	87.57	ANANTNAG	Peth Dialgam
3	KUPWARA	Keran	Mundian A	54.03	83.23	Mawer Qalamabad	Qalamchakla
4	Baramulla	Singhpora	Gund Ibrahim A	58.11	78.96	Sangrama	Lalad
5	Shopian	KELLER	Wathoo	60.20	80.68	Herman	CH.Sidiq Khan
6	Kulgam	DK Marg	NAGAM-2-A	68.45	86.44	Kund	Waltengoo-A
7	GANDERBAL	GUND	Sumbal	68.84	82.10	WAKURA	Barsoo
8	Budgam	Khag	Drung	69.46	87.46	Chararishief	MALPORA
9	Pulwama	Ichgoze	Inderwali	76.48	84.06	Awantipora	Lethpora-A
10	SRINAGAR	Khonmoh	Khonmoh C	82.52	91.69	HARWAN	Syedpora
<b>Jammu Division</b>							
1	REASI	JIJ Bagli	Dhakikote	50.01	87.27	KATRA	Arli Hansali
2	RAJOURI	Khawas	BADHAL A	52.58	79.98	Seri	DABBAR
3	Ramban	Ukhral	Balihote B	52.94	76.59	Batote	Thopal
4	Kishtwar	Warwan	Sukhnaie	53.78	81.85	KISHTWAR	Lachdayaram-A
5	Kathua	Duggain	Banjal Bhatwal	56.88	87.86	Kathua	Logate
6	POONCH	Balakote	Jarranwali Gali	57.38	78.18	MANDI	Azamabad
7	Doda	KASTIGARH	KUDDHAR B	57.93	88.12	Bhaderwah	GATHA
8	Udhampur	Panchari	Sadhota	59.97	87.31	Ghordi	Barmeen Lower
9	Jammu	RS Pura	Rathana	63.76	88.93	Satwari	Narwal Bala
10	SAMBA	Sumb	Sodam	74.28	90.71	Bari Brahmana	Palli



# Back<sub>2</sub> Village

Governance at doorsteps

The 'Back to Village' programme is aimed to involve the people of the state and government officials in a joint effort to deliver the mission of equitable development.

The programme is **to energizing** Panchayats and directing development efforts in rural areas through community participation

# Back to Village Program- Journey

## Phase-I

- focused on emerging panchayats, collecting feedback on delivery of government programmes, and getting a real-time assessment of the developmental needs of the villages.

## Phase-II

- *focused on the devolution of powers to panchayats and tried to understand how these panchayats are functioning and what are the grievances*

## Phase-III

- *aimed to build on the foundations of B2V-1 and B2V-2 and with the objective to empower panchayats in J&K and help them in successful implementation and execution of developmental schemes on the ground*

## Phase-IV

- aimed to see the progress of different schemes relating to the localized SDGs prioritized for that village as per the resolution passed by that Gram Panchayat

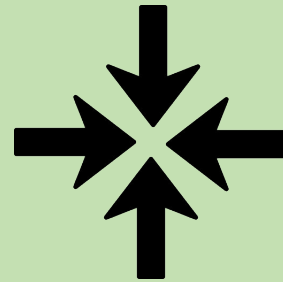
# Strategy for Back to Village Program Phase-IV



Resource Mapping of State Budget and State and Central Schemes for funding opportunities



Activation of District Local Development Indicator Framework (to monitor and assess LSDG Progress through online dashboard)



Convergence of activities with line departments and participating bodies



Augmenting Own Sources of Revenue of GPs



Forming partnerships with Academic Institutions, NGOs/CBOs/ CSOs for supporting community implementation



# Back To Village Campaign Phase-4



Back to Village Campaign launched with the theme governance at the doorstep which is based on Localization of SDGs.



Based on the theme, IEC for the campaign is designed in a fashion that will help the GPs to visualize the SDG theme for their GP.



A new set of questionnaire was prepared based on theme-based deliverables/Indicators which was aligned with 9 Thematic areas identified by MoPR.



Theme-based gap analysis wrt each GP was done in advance and was provided to GPs through our Visiting officers in advance.



The theme-wise GPDP was prepared by Gram panchayat for the current years

# Way forward



# THANK YOU

**Department of Rural Development and Panchayati Raj**  
**Government of Jammu & Kashmir**