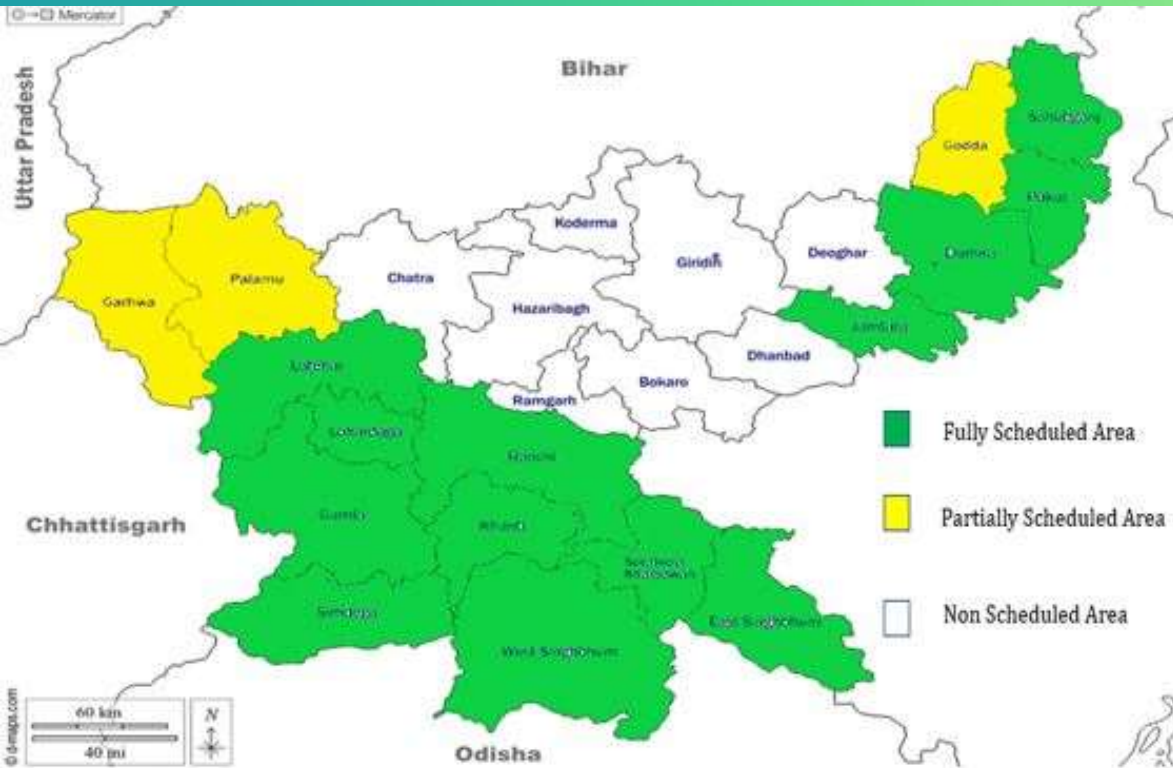


JHARKHAND - AT A GLANCE

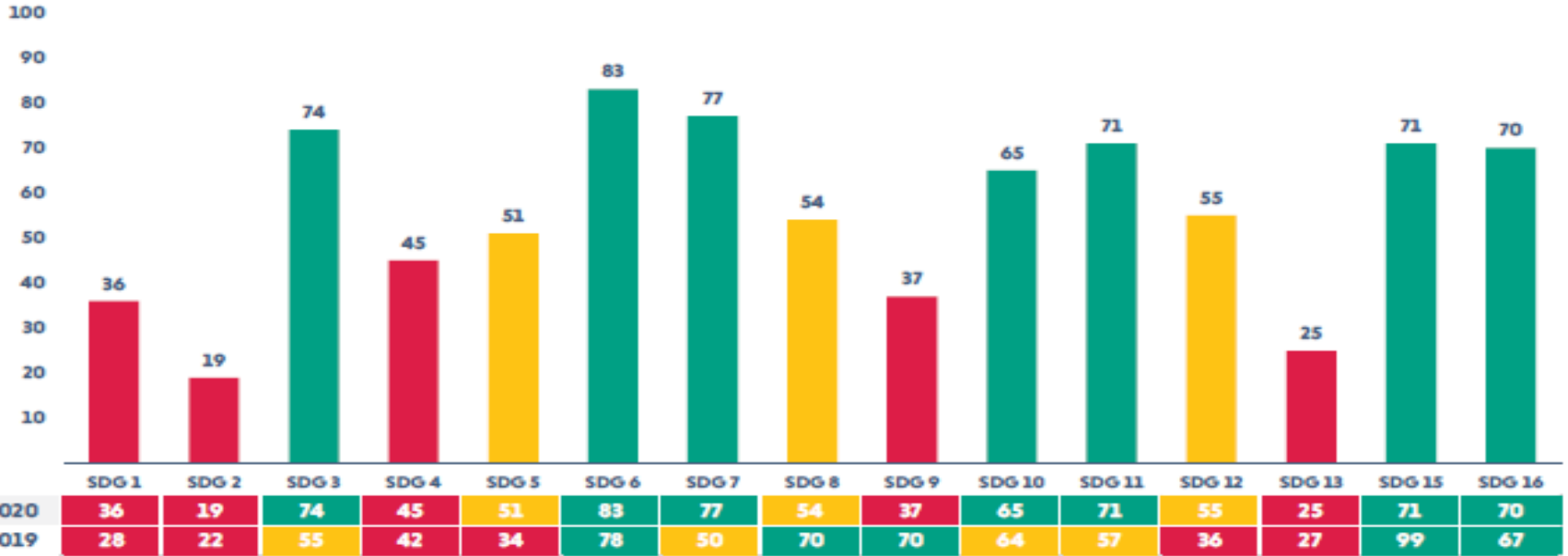


State profile		
1.	District	24
2.	Total Block	264
3.	Total Gram Panchayat	4345

Schedule (V) Area		
1.	District	16
2.	Block	135
3.	Gram Panchayat	2066
4.	Gram Sabha	16028

As per the Census of 2011, the proportion of rural population of Jharkhand is 76 % and the Urban Population is 24%. Scheduled Tribes constitute 26.21% of the state population and the Scheduled Caste and other 12.08 %.

SDG GOALS-CURRENT STATUS



PERFORMANCE BY INDICATOR



SDG-
3,6,7,10,11,15,16



SDG-5,8,12



SDG-
1,2,4,9,13

INSTITUTIONAL MECHANISM

Nodal Department-Department of Planning & Development

Lead Department-Department of Panchayati

Identification of Nodal officers for at District/Block/GP level

State Steering Committee-In process

District level Committee-Done

Block/ level Committee-Done

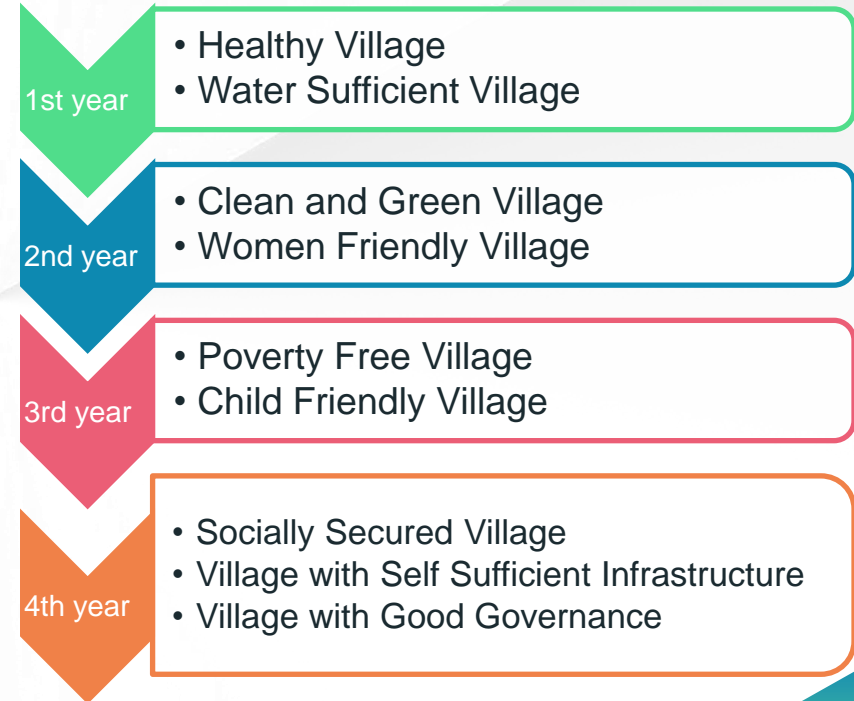
GP level committee-In process

Formulation of Key responsibilities



LOCALISING SDG-IMPLEMENTATION STRATEGY

- ✓ Finalization of Local Indicator Framework, District Indicator Framework.
- ✓ Assigning theme based responsibilities to Standing Committees at GP.
- ✓ Identification of resources to support LSDGs at GP level.
- ✓ Partnership between PRIs, VOs, SHGs, frontline workers for participatory planning and to ensure last mile delivery of services.
- ✓ Ensuring monthly meeting of all the GP/village level staff/workers/members
- ✓ State plans to saturate LSDGs, so, Year-wise themes are planned for saturation





IMPLEMENTATION MECHANISM

To promote entitlement based approach as a tool to augment the planning process and ensure convergence at all levels

1

Situational analysis and reasoning vision activities at GP level

3

Designating official/staff with concerned themes at ground level to monitor progress

5

To ensure convergence of schemes of all the line departments such as Health, Education, PHED etc as formulated during GPDP/BPDP

2

Target and goal setting to be done by GP/BP/ZP

4

To propose setting up of a SDG Cell at all concerned line departments along with one designated nodal officer for regular coordination

6

MONITORING MECHANISM/DASHBOARD



Panchayat Secretariat will be the office of all GP level functionaries.



For the purpose of tracking progress in respective thematic areas a dashboard/Portal is to be created with the help of CSC-SPV at state level



All GP level functionaries of the concerned line departments will be directed to provide data to GPs on monthly basis in a time bound manner.



Financial accountability processes such as outcome budget, education budget, health budget etc. to be linked with SDG dashboard





CAPACITY BUILDING & IEC

CB & IEC

CB & IEC

CB & IEC

CB & IEC

Integration of thematic goals have been incorporated in training modules

DoPR is in the process of making repository videos showcasing/highlighting good practices in the state such as model panchayats, Adarsh Panchayat, Beacon Panchayat etc

Training program of the newly Elected Representatives (ERs). Theme and need based training at regular periods

Feedback on training and capacity building for regular updation of training modules in alignment to progress based on dashboard indicators



STAKE HOLDERS TO BE TRAINED

State level

CEO-ZP, Director DRDA,
PD ITDA, PD ATMA, DWO,
DSWO, EE PHED, CS, DEO, DSE

Training Institutes

SIRD, CTI, 4 SPRC, 19 DPRC
Adhyaksh ZP, Upadhyaksh ZP,
ZP members
Block Development Officers

District level

BPMs, BEOs BPROs, CDPOs,
LEOs, BAOs,
Panchayat Secretaries

GP level

1. Healthy Village
2. Water Sufficient village
3. Clean and Green village

1. Women Friendly Village
2. Poverty Free Village
3. Child Friendly village

1. Socially Secured Village
2. Village with Self-Sufficient Infrastructure
3. Village with Good Governance

- ✓ Mukhiya, Up-Mukhiya
- ✓ Ward members
- ✓ SHG members
- ✓ Mata Samiti
- ✓ VHNC, DWSC
- ✓ Standing Committee
- ✓ Retired staff
- ✓ Active village people



RESOURCE ENVELOPE

Jharkhand being a mineral rich state, funds from DMFT can also be utilized in implementation and attaining of SDG goals .



1

The resources/fund for GPDP presently comes from CFC & MGNREGA

2

Funds from other line departments such as SBM, NRHM, SSA, 15th finance, ICDS, ITDA can be utilized in attaining SDG goals.

3

INCENTIVIZATION



Parameter around attainment of LSDGs have been conceptualized for state specific Panchayat award , Project Proposals, Lessons, etc



Award will be given in all thematic categories in the State.

An aerial photograph of a wind farm. A large white wind turbine is the central focus, standing in a vibrant green field. A dirt road leads from the foreground to the base of the turbine. In the distance, several other wind turbines are visible, scattered across the landscape. The sky is bright blue with scattered white clouds. The image is framed by teal and green diagonal overlays in the corners.

THANK YOU!