

Engendering Development through Gender Equality at grassroots



Why Engender Development?



- Ensure gender justice and promote gender equality
- Address discriminatory social norms and practices
- Enhance the value of women and girls
- Provide equal opportunities to women and girls
- **Help realize the vision of the Sustainable Development Goal 5**

Engendering Development in villages

- Enable organization of Mahila Sabhas to promote women's participation and understand their needs and concerns.
- Ensure preparation of Gram Panchayat Development Plans with involvement of women and girls
- Earmark funds in the Gram Panchayat budget for empowering women and girls
- Initiate community level actions to ensure improved value of women and girls.
- Facilitate convergence with existing structures such as SHGs and NRLM to empower women and increase their autonomy.
- promote full and effective participation of women and girls in political, economic and social life
- Integrate gender in the constitution and functioning of Gram Panchayat Level Standing Committees.



Role of Panchayats in Engendering Development: A Life Cycle Approach



CHILDHOOD

- Mobilizing families and community to celebrate birth of a girl child through innovative means
- Ensure functioning and enrollment of girls in Anganwadi Centers
- Ensure enrollment and retention of girls in schools
- Ensure constitution and functioning of Village Child Protection Committees

ADOLESCENCE

- Empowering girls by providing access to life skills and linking to vocational skills for gainful employment
- Ensure availability of adolescent friendly health services including counselling
- undertaking safety audits and ensure compliance for e.g. street lights.
- Creating awareness about illegality of early, forced and child marriage.
- Ensure functioning of Village Health, Nutrition and Sanitation Committees

ADULTHOOD

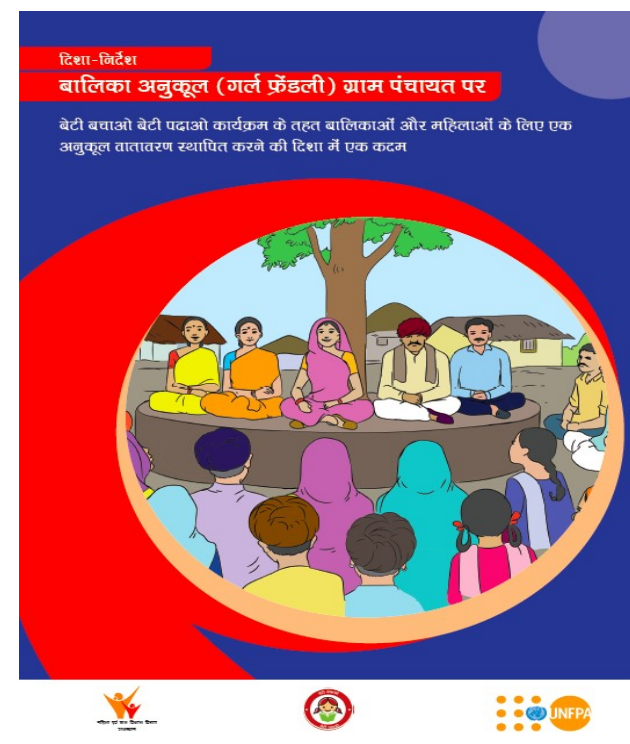
- Information about rights and entitlements of women and girls
- Access to health information and services
- Develop community support infrastructure and services to lessen the work burden of women
- Ensure women and girl children enjoy property-ownership rights in family inheritance of property
- Ensure equal wages to women, at par with men
- To reduce the work-burden of women, promote enabling technology like solar energy

ELDERLY

- Information and access to social protection schemes.
- Ensure elderly women lead a life free of violence.
- Access to geriatric care at Health facilities
- Initiate Elderly Self Help Groups.
- Initiate programs for Inter- generational approach to ageing, especially with elderly women
- Create geriatric infrastructure like Old age homes within the Gram Panchayat

Balika Friendly Panchayats- Sawai Madhopur, Rajasthan

- Capacity Building of various stakeholders on gender and empowerment of women and girls.
- Sustained mentoring support to selected Panchayats after training; for developing a girl friendly work-culture.
- Constituting a supportive Core Group comprising of Sarpanch, Ward Panches, Aanganwadi Worker, School Teachers, Religious Leaders, other influential community leaders and their orientation on gender and addressing harmful practices
- Organisation of monthly meetings for concurrent monitoring of the annual workplans of the Gram Panchayat to ensure issues related to women and girls are included and addressed.
- Undertaking innovative activities to enhance value of women and girls



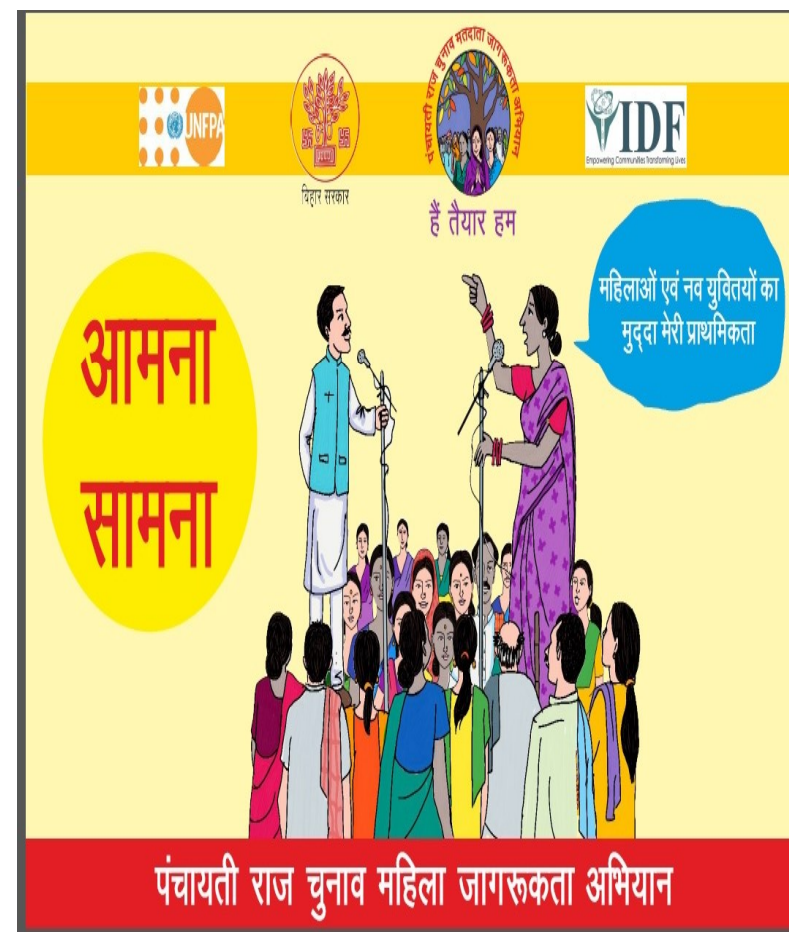
Sarpanch narrating experiences related to Girl Friendly Gram Panchayat



Mr. Ram Vilas Gurjar
Sarpanch
Gram Panchayat Binjari

Pre - Election Voter Awareness Campaign, Sheikhpura, Bihar

- Updation of voter list with focus on women and girls
- Awareness campaign on voting rights
- Nurturing young leadership through training and capacity building
- Nomination help camps for women contestants
- Development pact- Interaction of contestant candidates with community to understand specific needs of women and girls.



Addressing Gender Based Violence, Chhatarpur, Madhya Pradesh

- Undertaking safety Audits
- Engaging with women's collectives through Mahila Mudda Chaupals to understand and address their safety concerns
- Ensuring Protection officers and Service Providers under Protection of Women from Domestic Violence Act are designated and functioning
- Capacity building of frontline functionaries like Anganwari Workers, ANMs and to identify and respond to survivors of violence.

महिला हेल्पलाईन नं. 1090 एवं 181 समर्थन हेल्पलाइन नं. 9301744515

महिला हिंसा की रोकथाम हेतु

पंचायत क्या कर सकती है?

पंचायत राज अधिनियम के तहत सामाजिक न्याय की स्थापना एवं आर्थिक विकास पंचायतों की प्रमुख जिम्मेदारी है। महिला सुरक्षा भी इसका महत्वपूर्ण हिस्सा है।

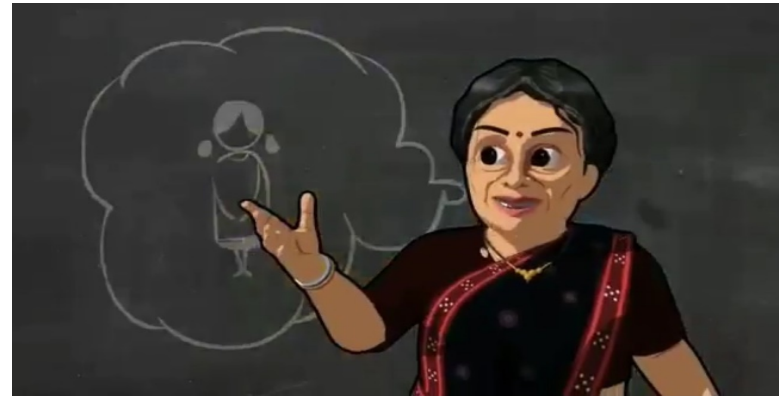
महिला हिंसा की रोकथाम हेतु पंचायत द्वारा उठाए जा सकने वाले कदम

महिला हितैषी वातावरण निर्माण एवं महिलाओं को आत्मनिर्भर और सक्षम बनाने के लिए महिला पंचों को शामिल कर शौर्य दल का गठन करना।	ग्राम विकास योजना के निर्माण और क्रियान्वयन में महिलाओं की जहरतों को विशेष महत्व देना।
महिलाओं के मुद्दों को प्राथमिकता देने के लिए समय-समय पर महिला ग्राम सभा का आयोजन करना।	बाल विवाह, दहेज जैसी कुप्रथाओं पर रोक हेतु ग्राम सभा से प्रस्ताव पारित कर उसका पालन कराना।
ऐसे स्थान जहाँ महिलाओं/किशोरियों को डर लगता हो या हिंसा संभावित हो पहचान कर, भय मुक्त बनाने के लिये आवश्यक कदम उठाना।	महिलाओं को अपमानित एवं उनके साथ दुर्व्यवहार करने वाले पंचायत प्रतिनिधियों को पद से हटाने की कार्यवाही कर सकती है। धारा-४०(क)(३)
	महिला सुरक्षा अधिनियमों के तहत नियुक्त प्राधिकृत अधिकारियों की जानकारी सार्वजनिक करना।

हर महिला को हिंसा मुक्त जीवन जीने का अधिकार है

महिला हितैषी पंचायत परियोजना

Awareness on Laws for Gender Equality, Dhenkenal, Odisha



Localising SDG 5: Creation of women friendly Panchayats

A Panchayat where
women are equal
partners in development



A Panchayat where
women and girls live with
dignity, realise their
dreams and pursue their
aspirations

A Panchayat where
women have the
autonomy to make
decisions about
themselves and their
lives



Women Friendly Village

A Panchayat where
women and girls have
access to ownership of
assets and coverage
under social protection
schemes